

# The MK 100/110 mobile construction crane.

**Fast, powerful and reliable.**

- + Telescopic jib - Reach up to 52.0 m
- + Super-raised working angle: 68,0 m hook height at 37,2 m working radius
- + One-person assembly in 17 minutes \*

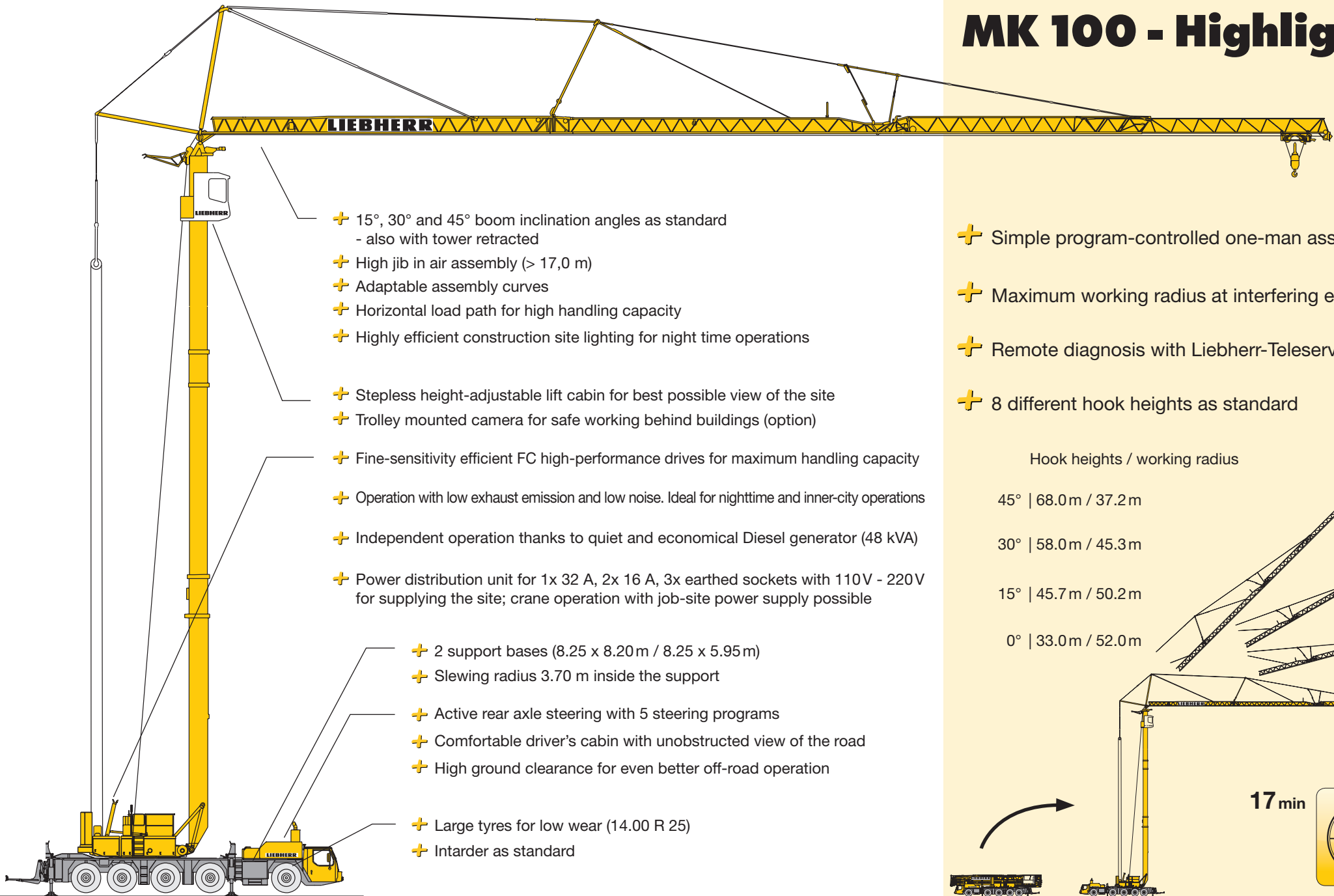


Technical data	
Max. lifting capacity	8,000 kg
Lifting capacity at jib head	2,300 / 1,800 kg
Working radius	44.0 / 52.0 m
Hook heights	
Tower retracted	25.0 m
Tower extended	33.0 m
15° raised working angle	45.7 m
30° raised working angle	58.0 m
45° super-raised working angle	68.0 m
Total weight	60.0 t
Drive / Steering	10 x 8 x 10



# LIEBHERR

# MK 100 - Highlights

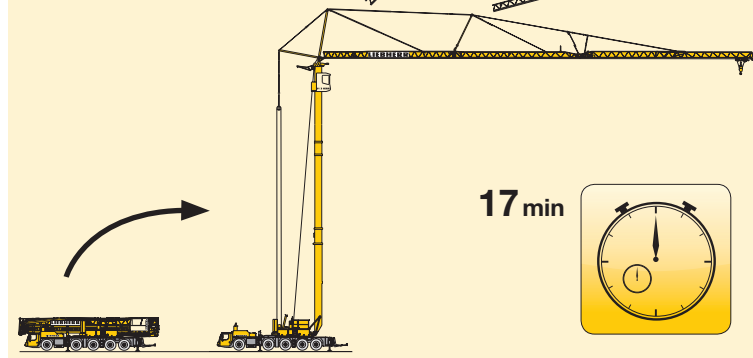
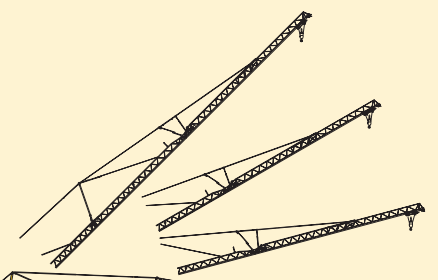


- + 15°, 30° and 45° boom inclination angles as standard  
- also with tower retracted
- + High jib in air assembly (> 17,0 m)
- + Adaptable assembly curves
- + Horizontal load path for high handling capacity
- + Highly efficient construction site lighting for night time operations
- + Stepless height-adjustable lift cabin for best possible view of the site
- + Trolley mounted camera for safe working behind buildings (option)
- + Fine-sensitivity efficient FC high-performance drives for maximum handling capacity
- + Operation with low exhaust emission and low noise. Ideal for nighttime and inner-city operations
- + Independent operation thanks to quiet and economical Diesel generator (48 kVA)
- + Power distribution unit for 1x 32 A, 2x 16 A, 3x earthed sockets with 110V - 220V for supplying the site; crane operation with job-site power supply possible
- + 2 support bases (8.25 x 8.20 m / 8.25 x 5.95 m)
- + Slewing radius 3.70 m inside the support
- + Active rear axle steering with 5 steering programs
- + Comfortable driver's cabin with unobstructed view of the road
- + High ground clearance for even better off-road operation
- + Large tyres for low wear (14.00 R 25)
- + Intarder as standard

- + Simple program-controlled one-man assembly
- + Maximum working radius at interfering edges
- + Remote diagnosis with Liebherr-Teleservice
- + 8 different hook heights as standard

Hook heights / working radius

45°		68.0 m	/	37.2 m
30°		58.0 m	/	45.3 m
15°		45.7 m	/	50.2 m
0°		33.0 m	/	52.0 m



Printed in Germany BK LBC-680-11.09-gb This information is supplied without liability. Subject to technical modifications.

**Liebherr-Werk Biberach GmbH**

Postfach 1663, D-88396 Biberach an der Riß

+49 (0)7351 41-0, Fax +49 (0)7351 41-22 25

www.liebherr.com, E-Mail: info.lbc@liebherr.com