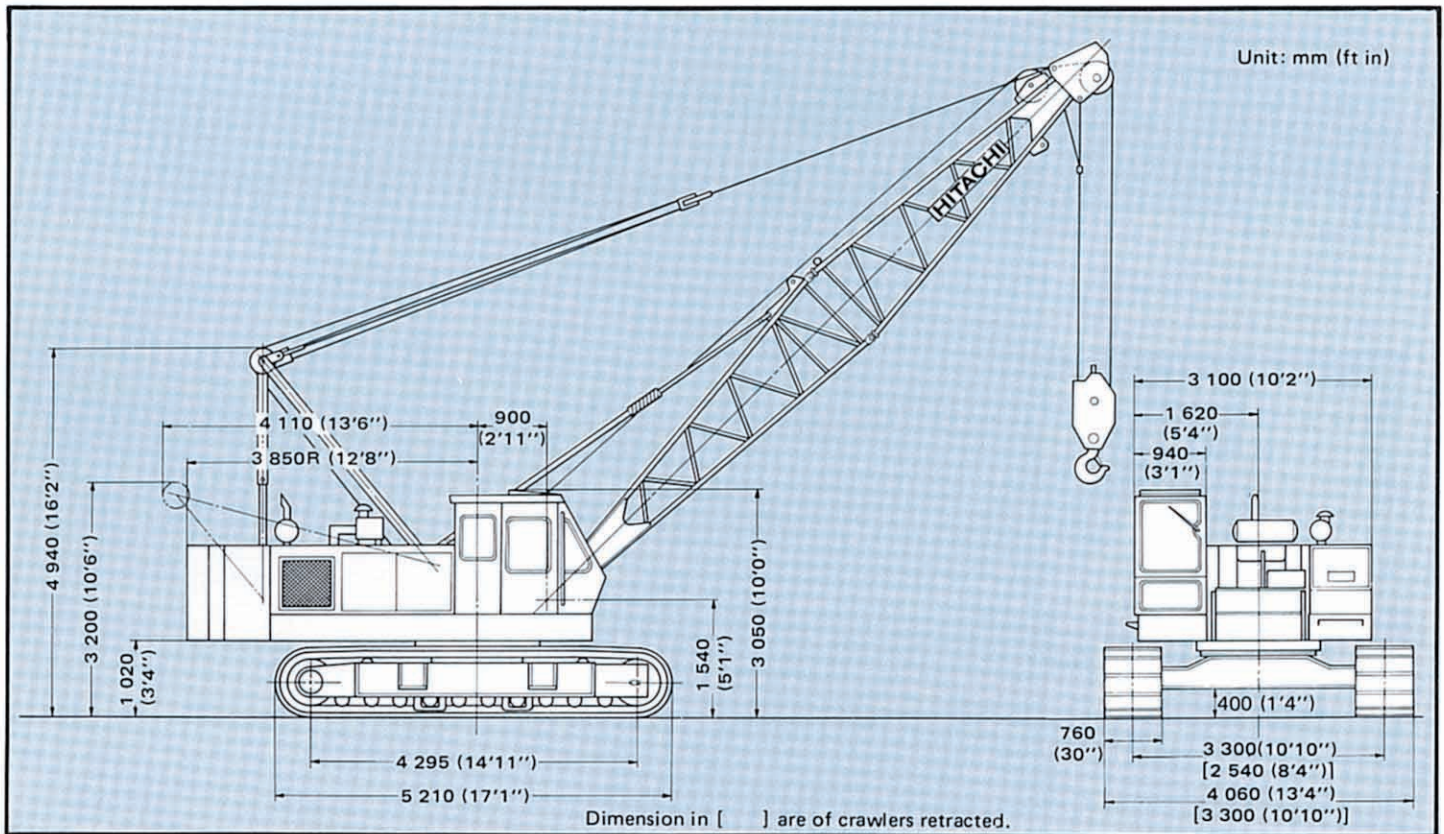


CRAWLER CRANE

With Tubular CRANE Boom

Dimensions



Specifications

Maximum rated load		40 000 kg (88 200 lb) at 3.7 m (12'2'') working radius
Boom	Basic boom length	10.0 m (32'10'')
	Max. boom length	46.0 m (150'11'')
	Jib length	6.10 m (20'0'') – 9.15 m (30'0'') – 12.20 m (40'0'') – 15.25 m (50'0'')
	Max. boom with jib length	55.25 m (181'3'') [40.0 m (131'3'') boom and 15.25 m (50'0'') jib]
Swing speed		0 – 3.3 min ⁻¹ (0 – 3.3 rpm)
Travel speed		0 – 1.5 km/h (0 – 0.93 mph)
Gradeability		22° (40%)
Ground pressure		0.58 bar (0.58 kgf/cm ² , 8.41 psi)
Operating weight	Equipped with basic boom, 40 000 kg (88 000 lb) capacity hook and 13 200 kg (29 100 lb) counterweight	41 000 kg (90 400 lb)
Engine	Model	HINO H06C-T
	Rated horsepower	110 kW (150 PS) at 2 000 min ⁻¹ (2 000 rpm)

HOOKS

Capacity	Weight	Number of hoist reeving and maximum rated loads							
		7	6	5	4	3	2	1	
40 000 kg (88 200 lb)	390 kg (860 lb)	40 000 kg (88 200 lb)	34 200 kg (75 400 lb)	28 500 kg (62 800 lb)	22 800 kg (50 300 lb)	17 100 kg (37 700 lb)	11 400 kg (25 100 lb)		Standard for main boom
15 000 kg (33 100 lb)	280 kg (620 lb)					17 100 kg (37 700 lb)	11 400 kg (25 100 lb)		Optional for main boom
5 000 kg (11 000 lb)	130 kg (290 lb)							5 000 kg (11 000 lb)	Optional for jib or aux. jib

DRUMS

Dimensions

	Rope dia.	Width	Drum p.c.d.	Max. rope capacity
Main hoist drum	20 mm (0.787")	306 mm (12.05")	420 mm (16.54")	220 m (722')
Aux. hoist drum	20 mm (0.787")	306 mm (12.05")	420 mm (16.54")	220 m (722')

(9th layer)

Line speed and line pull

	Max. line speed m/min (ft/min)				Effective line pull	@	Line speed	Max. starting line pull	Max. running line pull
	Hoisting		Lowering						
Main hoist drum	H	70 (230)	H	70 (230)	108 kN (11 000 kgf) (24 300 lbf)	@	34 m/min (112 ft/min)	137 kN (14 000 kgf) (30 900 lbf)	143 kN (14 600 kgf) (32 000 lbf)
	L	35 (115)	L	35 (115)					
Aux. hoist drum	H	70 (230)	H	70 (230)	108 kN (11 000 kgf) (24 300 lbf)	@	34 m/min (112 ft/min)	137 kN (14 000 kgf) (30 900 lbf)	143 kN (14 600 kgf) (32 000 lbf)
	L	35 (115)	L	35 (115)					

H: High speed range L: Low speed range

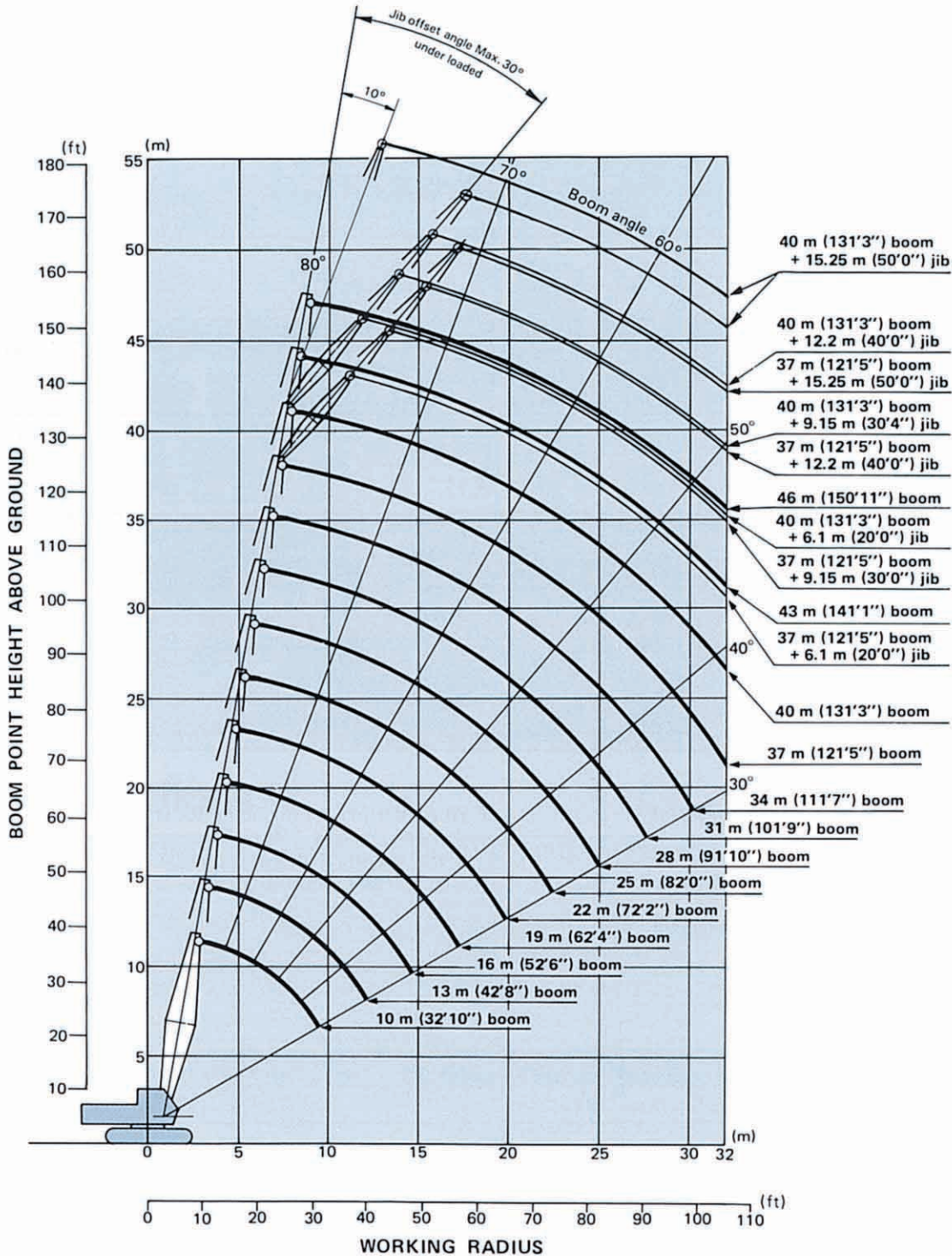
- Notes: 1) Line speed and line pull are based on first layer of winding at rated engine rpm.
 2) Hoisting line speed varies with load.
 3) Line pull is based on a single line pull in high speed range.
 4) Effective line pull is equivalent to available line pull of mechanical drive winch.

- 5) When starting, hydraulic motor is without rotating, the line pull is "Max. starting line pull". After motor rotating, the line pull becomes "Max. running line pull" shortly.

BOOM HOIST DRUM

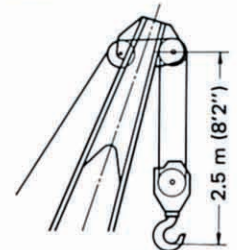
Rope diameter	Hoisting line speed	Lowering line speed
14 mm (0.551")	60 m/min (197 ft/min)	60 m/min (197 ft/min)

Working Ranges



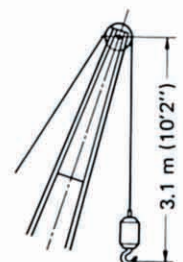
HOOK CLEARANCE

Boom



40 000 kg (88 200 lb)
Capacity hook

Jib



5 000 kg (11 000 lb)
Capacity hook

Crane Ratings

JIS Rating:

The rated loads shown don't exceed 78% of tipping loads with the machine on firm level ground.

BS Rating:

The rated loads are determined according to BS (British Standard; 1981) and the machine is stationed on firm, level ground.

PCSA Rating:

The rated load are determined according to PCSA (Power Crane and Shovel Association in U.S.A.) and do not exceed 75% of tipping load on condition that the machine is stationed on firm, level ground.

Tubular chord crane boom in 360° working area with fully extended side frames

Boom length	Working radius		Boom angle	Rated load				
				JIS rating	BS rating		PCSA rating	
				kg	kg	lb	kg	lb
m (ft in)	m	ft in	degree	kg	kg	lb	kg	lb
10.0 (32'10")	3.0	9'10"	79.26	40 000	40 000	88 100	40 000	88 100
	3.5	11'6"	76.31	40 000	40 000	88 100	40 000	88 100
	3.7	12'2"	75.12	40 000	40 000	88 100	38 400	84 600
	4.0	13'1"	73.32	35 000	35 000	77 100	33 650	74 100
	4.5	14'9"	70.28	28 950	28 950	63 800	27 800	61 200
	5.0	16'5"	67.18	24 650	24 650	54 300	23 650	52 100
	6.0	19'8"	60.72	18 900	18 900	41 600	18 150	40 000
	7.0	23'0"	53.80	15 250	15 250	33 600	14 650	32 200
	8.0	26'3"	46.16	12 750	12 750	28 100	12 200	26 800
	9.0	29'6"	37.30	10 950	10 950	24 100	10 450	23 000
9.7	31'10"	30.00	9 950	9 950	21 900	9 500	20 900	
13.0 (42'8")	3.7	12'2"	78.62	40 000	40 000	88 100	38 400	84 600
	4.0	13'1"	77.26	35 000	35 000	77 100	33 600	74 000
	4.5	14'9"	74.98	28 900	28 900	63 700	27 750	61 100
	5.0	16'5"	72.68	24 600	24 600	54 200	23 600	52 000
	6.0	19'8"	67.96	18 850	18 850	41 500	18 100	39 900
	7.0	23'0"	63.08	15 200	15 200	33 500	14 600	32 100
	8.0	26'3"	57.96	12 700	12 700	27 900	12 150	26 700
	9.0	29'6"	52.52	10 850	10 850	23 900	10 400	22 900
	10.0	32'10"	46.64	9 450	9 450	20 800	9 050	19 900
	12.0	39'4"	32.44	7 500	7 500	16 500	7 150	15 700
12.3	40'4"	30.00	7 250	7 250	15 900	6 950	15 300	
16.0 (52'6")	4.0	13'1"	79.69	34 950	34 950	77 000	33 550	73 900
	4.5	14'9"	77.86	28 850	28 850	63 600	27 700	61 000
	5.0	16'5"	76.01	24 550	24 550	54 100	23 500	51 800
	6.0	19'8"	72.27	18 800	18 800	41 400	18 000	39 600
	7.0	23'0"	68.45	15 150	15 150	33 400	14 500	31 900
	8.0	26'3"	64.52	12 600	12 600	27 700	12 050	26 500
	9.0	29'6"	60.45	10 800	10 800	23 800	10 300	22 700
	10.0	32'10"	56.20	9 400	9 400	20 700	8 950	19 700
	12.0	39'4"	46.94	7 400	7 400	16 300	7 050	15 500
	14.0	45'11"	35.91	6 050	6 000	13 200	5 750	12 600
14.9	48'11"	30.00	5 550	5 550	12 200	5 300	11 600	

Boom length	Working radius		Boom angle	Rated load				
				JIS rating	BS rating		PCSA rating	
m (ft in)	m	ft in	degree	kg	kg	lb	kg	lb
19.0 (62'4")	4.5	14'9"	79.80	28 800	28 800	63 400	27 650	60 900
	5.0	16'5"	78.26	24 500	24 500	54 000	23 500	51 800
	6.0	19'8"	75.15	18 750	18 750	41 300	17 950	39 500
	7.0	23'0"	72.00	15 100	15 100	33 200	14 450	31 800
	8.0	26'3"	68.78	12 550	12 550	27 600	12 000	26 400
	9.0	29'6"	65.49	10 750	10 750	23 600	10 250	22 500
	10.0	32'10"	62.11	9 300	9 300	20 500	8 900	19 600
	12.0	39'4"	54.98	7 300	7 300	16 000	6 950	15 300
	14.0	45'11"	47.14	5 950	5 900	13 000	5 650	12 400
	16.0	52'6"	38.10	5 000	4 900	10 800	4 750	10 400
17.5	57'5"	30.00	4 450	4 350	9 590	4 200	9 250	
22.0 (72'2")	5.0	16'5"	79.88	24 400	24 400	53 700	23 500	51 800
	6.0	19'8"	77.22	18 650	18 650	41 100	17 900	39 400
	7.0	23'0"	74.53	15 000	15 000	33 000	14 400	31 700
	8.0	26'3"	71.80	12 440	12 450	27 400	11 950	26 300
	9.0	29'6"	69.02	10 650	10 650	23 400	10 200	22 400
	10.0	32'10"	66.19	9 200	9 200	20 200	8 850	19 500
	12.0	39'4"	60.33	7 200	7 200	15 800	6 900	15 200
	14.0	45'11"	54.08	5 850	5 800	12 700	5 600	12 300
	16.0	52'6"	47.29	4 850	4 800	10 500	4 650	10 200
	18.0	59'1"	39.62	4 150	4 050	8 920	3 950	8 700
20.1	65'11"	30.00	3 550	3 450	7 600	3 400	7 490	
25.0 (82'0")	6.0	19'8"	78.78	18 600	18 600	41 000	17 800	39 200
	7.0	23'0"	76.43	14 950	14 950	32 900	14 300	31 500
	8.0	26'3"	74.05	12 450	12 450	27 400	11 900	26 200
	9.0	29'6"	71.65	10 600	10 600	23 300	10 100	22 200
	10.0	32'10"	69.20	9 150	9 150	20 100	8 750	19 200
	12.0	39'4"	64.19	7 150	7 150	15 700	6 800	14 900
	14.0	45'11"	58.95	5 800	5 750	12 600	5 500	12 100
	16.0	52'6"	53.39	4 800	4 750	10 400	4 550	10 000
	18.0	59'1"	47.40	4 050	3 950	8 700	3 850	8 480
	20.0	65'7"	40.73	3 500	3 350	7 380	3 300	7 270
22.0	72'2"	32.99	3 050	2 900	6 390	2 850	6 280	
22.7	74'6"	30.00	2 900	2 750	6 060	2 700	5 950	
28.0 (91'10")	6.0	19'8"	80.00	18 500	18 500	40 700	17 750	39 100
	7.0	23'0"	77.91	14 850	14 850	32 700	14 200	31 300
	8.0	26'3"	75.80	12 350	12 350	27 200	11 800	26 000
	9.0	29'6"	73.68	10 500	10 500	23 100	10 000	22 000
	10.0	32'10"	71.53	9 100	9 100	20 000	8 650	19 000
	12.0	39'4"	67.14	7 050	7 000	15 400	6 700	14 700
	14.0	45'11"	62.60	5 700	5 600	12 300	5 400	11 900
	16.0	52'6"	57.86	4 700	4 600	10 100	4 450	9 810
	18.0	59'1"	52.85	3 950	3 850	8 480	3 750	8 260
	20.0	65'7"	47.48	3 400	3 250	7 160	3 200	7 050
	22.0	72'2"	41.59	2 950	2 800	6 170	2 750	6 060
	24.0	78'9"	34.91	2 550	2 400	5 290	2 400	5 290
25.3	83'0"	30.00	2 350	2 200	4 850	2 200	4 850	
31.0 (101'9")	7.0	23'0"	79.10	14 850	14 850	32 700	14 200	31 300
	8.0	26'3"	77.20	12 300	12 300	27 100	11 750	25 900
	9.0	29'6"	75.30	10 450	10 450	23 000	9 950	21 900
	10.0	32'10"	73.37	9 050	9 050	19 900	8 600	18 900
	12.0	39'4"	69.46	7 000	6 950	15 300	6 700	14 700
	14.0	45'11"	65.45	5 650	5 550	12 200	5 350	11 700
	16.0	52'6"	61.29	4 650	4 550	10 000	4 400	9 700
	18.0	59'1"	56.97	3 900	3 800	8 370	3 700	8 150
	20.0	65'7"	52.41	3 350	3 200	7 050	3 150	6 940
	22.0	72'2"	47.55	2 850	2 700	5 950	2 700	5 950
	24.0	78'9"	42.27	2 500	2 300	5 070	2 300	5 070
	26.0	85'4"	36.38	2 150	2 000	4 400	2 000	4 400
	27.9	91'6"	30.00	1 950	1 750	3 850	1 800	3 960

Boom length	Working radius		Boom angle	Rated load				
				JIS rating	BS rating		PCSA rating	
	m (ft in)	m	ft in	degree	kg	kg	lb	kg
34.0 (111'7")	7.1	23'4"	79.90	14 400	13 600	29 900	14 000	30 800
	8.0	26'3"	78.35	12 200	12 200	26 800	11 650	25 600
	9.0	29'6"	76.62	10 350	10 350	22 800	9 900	21 800
	10.0	32'10"	74.88	8 950	8 950	19 700	8 550	18 800
	12.0	39'4"	71.35	6 950	6 850	15 100	6 600	14 500
	14.0	45'11"	67.74	5 550	5 450	12 000	5 250	11 500
	16.0	52'6"	64.04	4 550	4 450	9 810	4 300	9 470
	18.0	59'1"	60.21	3 800	3 700	8 150	3 600	7 930
	20.0	65'7"	56.23	3 250	3 100	6 830	3 050	6 720
	22.0	72'2"	52.05	2 750	2 600	5 730	2 600	5 730
	24.0	78'9"	47.61	2 400	2 200	4 850	2 200	4 850
	26.0	85'4"	42.82	2 050	1 900	4 180	1 900	4 180
	28.0	91'10"	37.56	1 800	1 600	3 520	1 650	3 630
	30.0	98'5"	31.55	1 550	1 350	2 970	1 450	3 190
30.5	100'1"	30.00	1 500	1 300	2 860	1 400	3 080	
37.0 (121'5")	8.0	26'3"	79.31	12 200	10 800	23 800	11 650	25 600
	9.0	29'6"	77.73	10 350	10 350	22 800	9 850	21 700
	10.0	32'10"	76.13	8 900	8 900	19 600	8 500	18 700
	12.0	39'4"	72.91	6 900	6 800	14 900	6 550	14 400
	14.0	45'11"	69.64	5 500	5 400	11 900	5 250	11 500
	16.0	52'6"	66.29	4 550	4 400	9 700	4 300	9 470
	18.0	59'1"	62.85	3 800	3 650	8 040	3 550	7 820
	20.0	65'7"	59.29	3 200	3 050	6 720	3 000	6 610
	22.0	72'2"	55.60	2 750	2 550	5 620	2 550	5 620
	24.0	78'9"	51.74	2 350	2 150	4 730	2 150	4 730
	26.0	85'4"	47.66	2 000	1 800	3 960	1 850	4 070
	28.0	91'10"	43.28	1 750	1 550	3 410	1 600	3 520
30.0	98'5"	38.51	1 500	1 300	2 860	1 400	3 080	
32.0	105'0"	33.18	1 250	1 100	2 420	1 200	2 640	
40.0 (131'3")	8.1	26'7"	79.97	11 450	9 400	20 700	11 450	25 200
	9.0	29'6"	78.66	10 250	8 800	19 400	9 850	21 700
	10.0	32'10"	77.19	8 850	8 000	17 600	8 400	18 500
	12.0	39'4"	74.23	6 800	6 700	14 700	6 450	14 200
	14.0	45'11"	71.23	5 450	5 300	11 600	5 150	11 300
	16.0	52'6"	68.17	4 450	4 300	9 470	4 200	9 250
	18.0	59'1"	65.04	3 700	3 500	7 710	3 450	7 600
	20.0	65'7"	61.82	3 100	2 900	6 390	2 900	6 390
	22.0	72'2"	58.51	2 650	2 450	5 400	2 450	5 400
	24.0	78'9"	55.07	2 250	2 050	4 510	2 100	4 620
	26.0	85'4"	51.48	1 900	1 700	3 740	1 750	3 850
	28.0	91'10"	47.70	1 600	1 450	3 190	1 500	3 300
30.0	98'5"	43.67	1 350	1 200	2 640	1 300	2 860	
32.0	105'0"	39.31	1 150	1 000	2 200	1 100	2 420	
43.0 (141'1")	9.0	29'6"	79.46	9 850	7 500	16 500	9 800	21 600
	10.0	32'10"	78.10	8 750	7 000	15 400	8 400	18 500
	12.0	39'4"	75.36	6 750	6 650	14 600	6 400	14 100
	14.0	45'11"	72.58	5 350	5 200	11 400	5 050	11 100
	16.0	52'6"	69.76	4 350	4 200	9 250	4 100	9 030
	18.0	59'1"	66.89	3 600	3 450	7 600	3 400	7 490
	20.0	65'7"	63.95	3 000	2 850	6 280	2 850	6 280
	22.0	72'2"	60.93	2 550	2 350	5 180	2 350	5 180
	24.0	78'9"	57.83	2 150	1 950	4 290	2 000	4 400
	26.0	85'4"	54.61	1 800	1 600	3 520	1 700	3 740
	28.0	91'10"	51.25	1 500	1 350	2 970	1 450	3 190
	30.0	98'5"	47.73	1 250	1 100	2 420	1 200	2 640
32.0	105'0"	44.00	1 050	900	1 980	1 000	2 200	
46.0 (150'11")	10.0	32'10"	78.89	8 350	6 000	13 200	8 250	18 100
	12.0	39'4"	76.34	6 650	5 500	12 100	6 300	13 800
	14.0	45'11"	73.75	5 250	5 100	11 200	5 000	11 000
	16.0	52'6"	71.14	4 250	4 100	9 030	4 050	8 920
	18.0	59'1"	68.48	3 500	3 350	7 380	3 300	7 270
	20.0	65'7"	65.77	2 950	2 750	6 060	2 750	6 060
	22.0	72'2"	63.00	2 450	2 250	4 960	2 300	5 070
	24.0	78'9"	60.16	2 050	1 850	4 070	1 900	4 180
	26.0	85'4"	57.23	1 700	1 500	3 300	1 600	3 520
	28.0	91'10"	54.20	1 400	1 250	2 750	1 350	2 970
	30.0	98'5"	51.06	1 150	1 000	2 200	1 100	2 420
	32.0	105'0"	47.76	900	800	1 760	900	1 980