

US-60-1R

Technical Data

ELEVATOR	Elevator driveRack and pinion Maximum passengers30 Total base unit weight15,656 lbs (7,116 kg) Capacity6,000 lbs (2,722 kg)
CAR/GATES	Car weight5,600 lbs (2,545 kg) Maximum car speed150 ft/min (45.73 m/min) Interior dimensions12'4" L x 4'8" W x 7'2" H (3.76 m x 1.42 m x 2.18m) Landing gatesSwinging Gates
TOWER	Maximum tower height900' (274.32 m) Consult Factory for Greater Heights Dimensions of tower38" W x 28" L x 60" H (.97 m x .71 m x 1.52 m) Weight of tower300 lbs (136 kg) Wall tiesAdjustable Strut Tie-in intervals30' (9.14 m)
MOTOR/POWER	Electrical motor35 HP 26 KW Power required33 KVA, 480 VAC, 60 Hz, 3Ø Motor controlVariable Frequency Drive Electrical outlet120 VAC In Car Base disconnectCircuit Breaker in NEMA 4 Enclosure Full load current39.5 Amps Traveling cableMulti-Conductor Type W – Tower Height Plus 30' (9.14 m)
BRAKES	BrakeSpring Set, Electrical Release Multiple Disc Brake Safety overspeed governorCentrifugal Actuated Multiple Friction Disc Brake Stopping distance accuracy+/- .6" (+/- 15.24mm) Brake torque175 ft./lbs. (102 Nm)
COUNTER-WEIGHT	Weight of counterweight5,600 lbs (2,545 kg) Counterweight wire ropes5/8" (15.88 mm) 6x25 XIP-IWRC Length of counterweight ropes2 x Tower Height Plus 30' (9.14 m)

STANDARD BASE UNIT

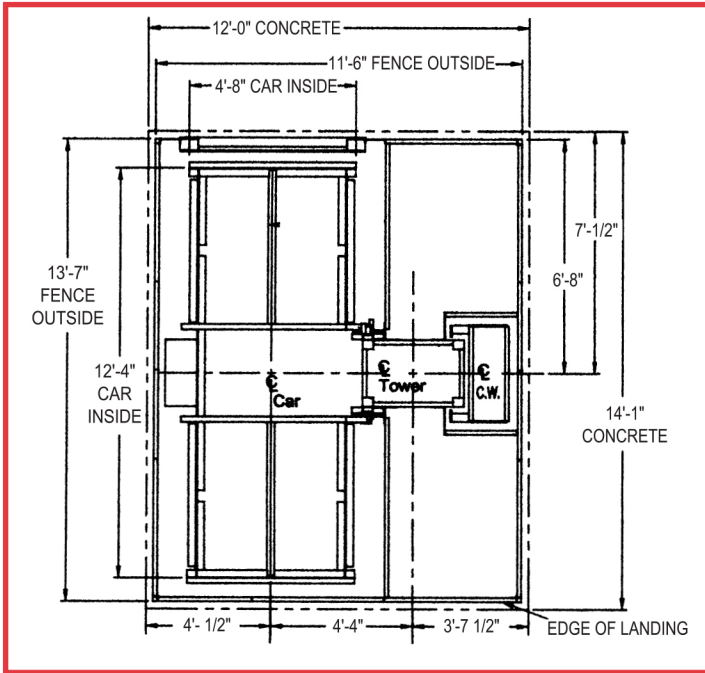
- Fully assembled enclosed car
- Overspeed governor
- Two manually operated vertically bi-parting car gates
- Control and limit switches
- 20' of tower for 0 lifting height
- Hot Dipped Galvanized Car & Tower
- Counterweight & Cathead Assembly
- Variable Frequency Drive (VFD)
- Base fence enclosure
- Base disconnect box
- Buffer stand and springs
- Power cord guide trailing wheel assembly
- GFI Receptacle in Car
- Hand lever control
- Interior Car Lighting

OPTIONAL FEATURES

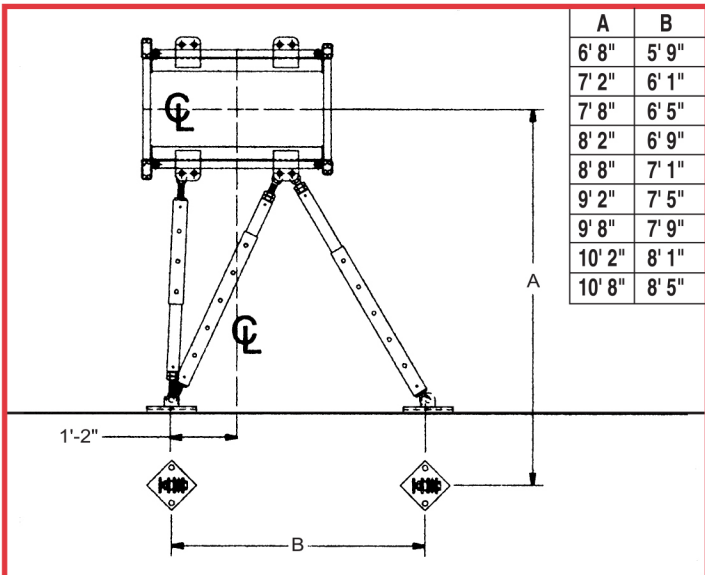
- Base platform and stairs
- Building landing gates
- Landing call station
- Automatic control system
- Emergency lighting systems
- Additional tower sections
- Wall Ties
- Auxiliary manual hand control provision for opposite hand installation
- Gin pole with winch for tower erection
- Communication or signal system
- Alarm installation
- Pit light & switch
- Pit stop switch
- Car top light & switch
- Car top receptacle

US-60-1R

FOUNDATION DIMENSIONS

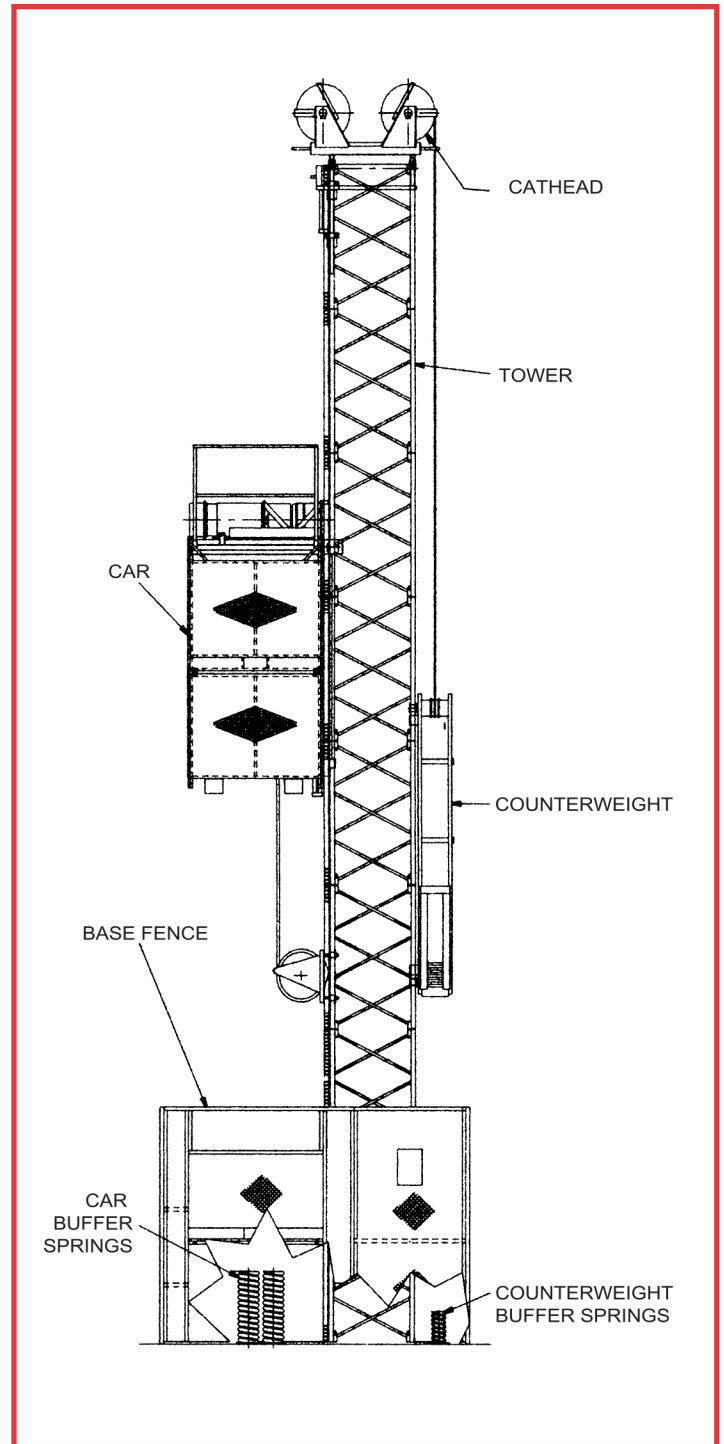


WALL TIE DETAIL



Dimensions are typical, please consult with engineering for specific configurations.

BASIC ELEMENTS



Champion Elevators are designed to comply with ANSI A10.4 and/or A17.1 Part XV. Use of products must conform to safe practice and applicable statutes, regulations, codes, and ordinances. Drawings are illustrative only and do not necessarily depict exact configurations of products offered at a particular time. Champion Elevators, Inc. has a policy of continuous product research and development, and reserves the right to change design and specifications without notice.