

SCM TOPKIT FO/23B

SCM TOWER CRANES



ISO9001-94-GB/T19001/-94 REGISTRATION NO. 1196A016

Load Distribution



2.9 →	14.5	16	18	20	22	24	26	26.9	30	32	34	36	38	40	42	44	46	48	50	m
🏗️ / 🏗️	10	8.9	7.8	6.9	6.2	5.6	5	5	4.4	4.05	3.75	3.5	3.3	3.1	2.9	2.7	2.55	2.45	2.3	t

50m	2.9 →	28.2	30	32	34	36	38	40	42	44	46	48	50	m
🏗️	5	4.7	4.35	4.05	3.8	3.6	3.4	3.2	3	2.85	2.75	2.6	t	

2.9 →	14.5	17	19	21	23	25	26	26.9	29	31	33	35	37	39	41	43	45	m
🏗️ / 🏗️	10	8.3	7.3	6.5	5.9	5.3	5	5	4.55	4.2	3.9	3.65	3.4	3.15	3	2.8	2.65	t

45m	2.9 →	28.2	29	31	33	35	37	39	41	43	45	m
🏗️	5	4.85	4.5	4.2	3.95	3.7	3.5	3.3	3.1	2.95	t	

2.9 →	14.5	16	18	20	22	24	26	26.9	30	32	34	36	38	40	m
🏗️ / 🏗️	10	8.9	7.8	6.9	6.2	5.6	5	5	4.4	4.05	3.75	3.5	3.3	3.1	t

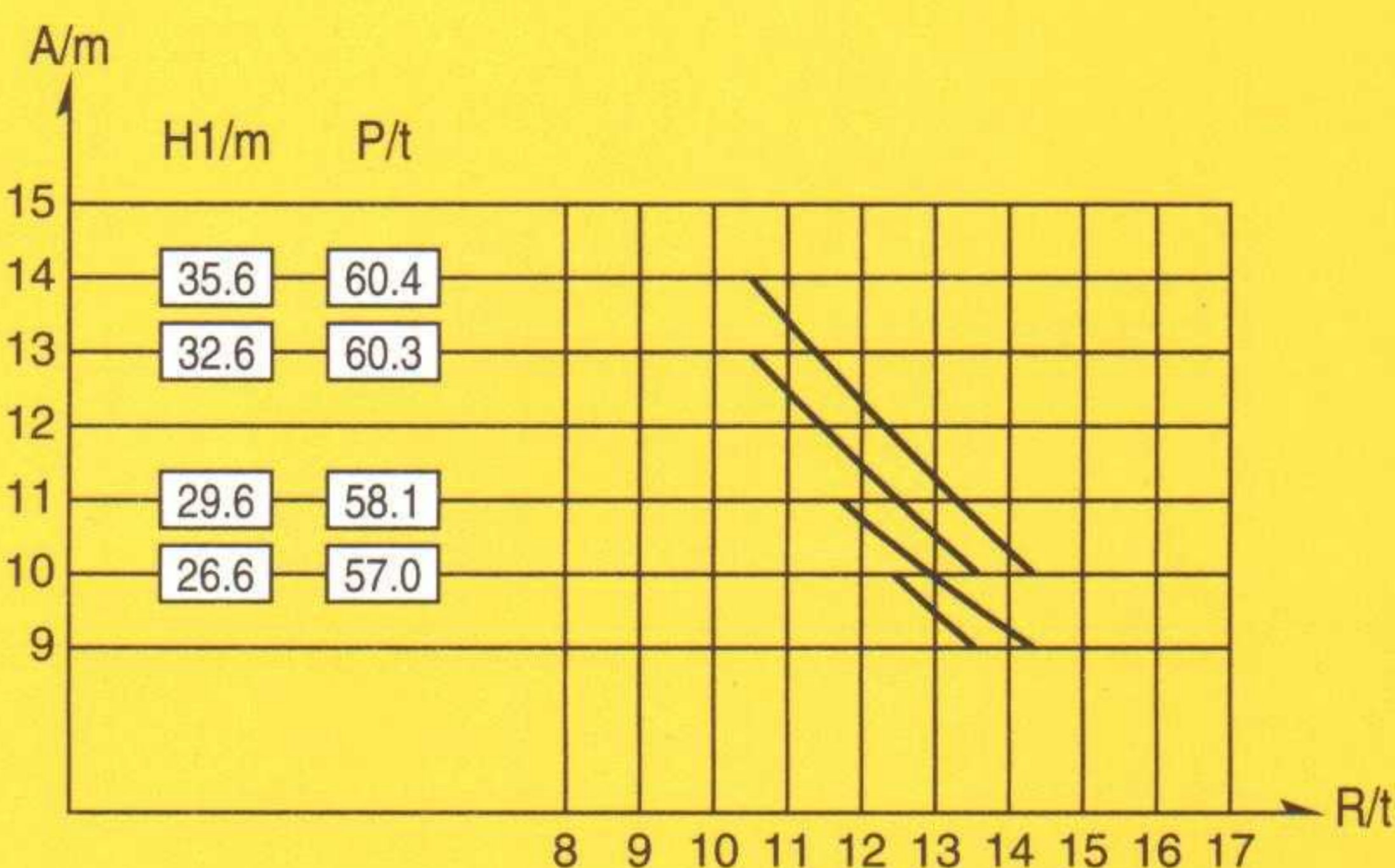
40m	2.9 →	28.2	30	32	34	36	38	40	m
🏗️	5	4.7	4.35	4.05	3.8	3.6	3.4	t	

Standard trolley 2/4 fall
(When using 🏗️ subtract 0.1t
from the loads 🏗️).

Optional trolley 2 fall only.

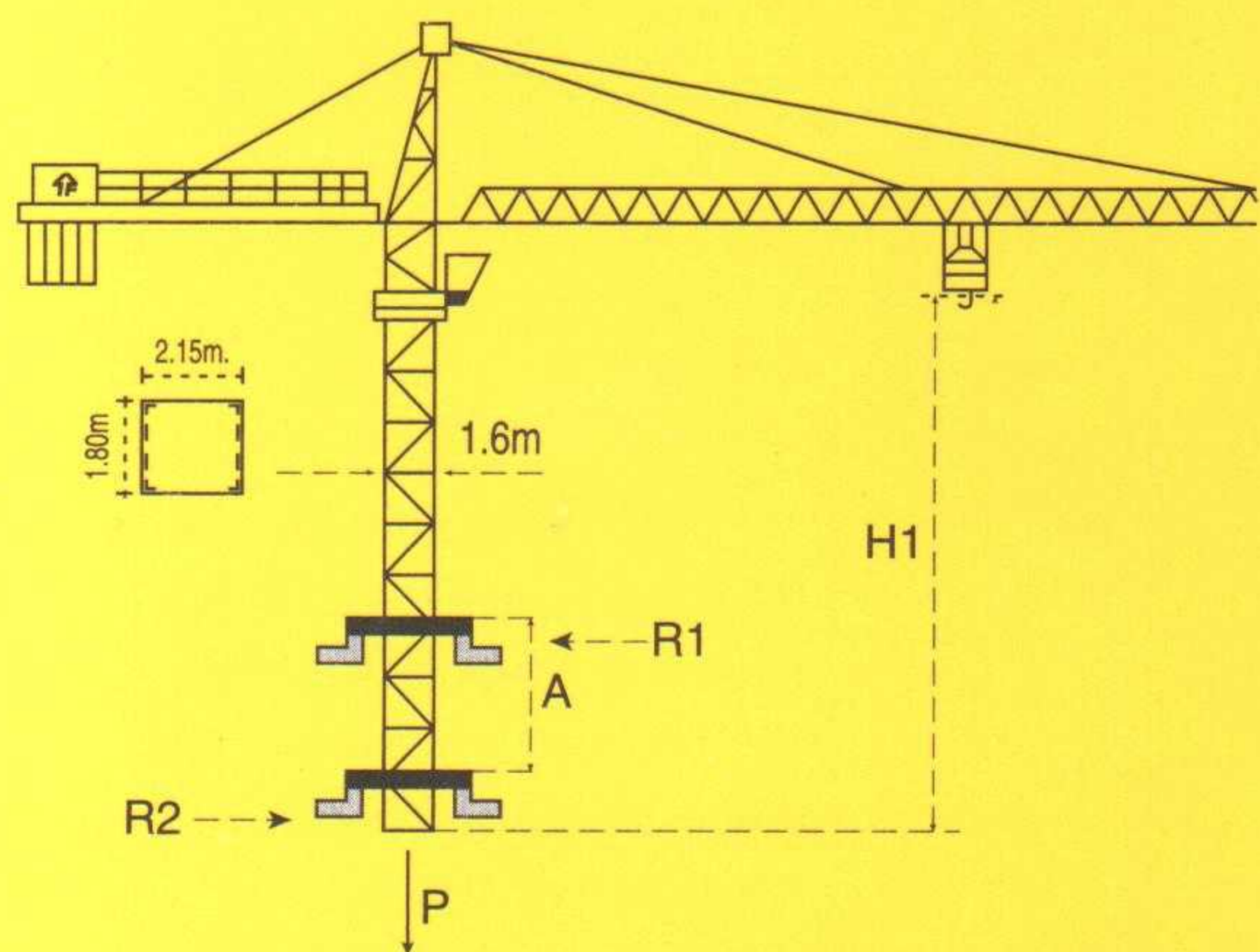
2.9 →	14.5	17	19	21	23	25	26	26.9	29	31	33	35	m
🏗️ / 🏗️	10	8.3	7.3	6.5	5.9	5.3	5	5	4.55	4.2	3.9	3.65	t

35m	2.9 →	28.2	29	31	33	35	m
🏗️	5	4.85	4.5	4.2	3.95	t	



2.9 →	14.5	16	18	20	22	24	26	26.9	30	m
🏗️ / 🏗️	10	8.9	7.8	6.9	6.2	5.6	5	5	4.4	t

30m	2.9 →	28.2	30	m
🏗️	5	4.7	t	



Type	Mast Sec.	H.U.H (max)	Distance		Reaction			Weight
			Amin	Amax	P	R1	R2	
BA476	1.6m	35.6m	7m	11m	63.5t	18.7t	16.7t	41t
BA479	1.6m	43.3m	12m	19m	69.6t	18.6t	15.9t	50t
BA675	2m	53.6m	16m	21m	75t	27.9t 21.2t	14.7t 10.4t	59t

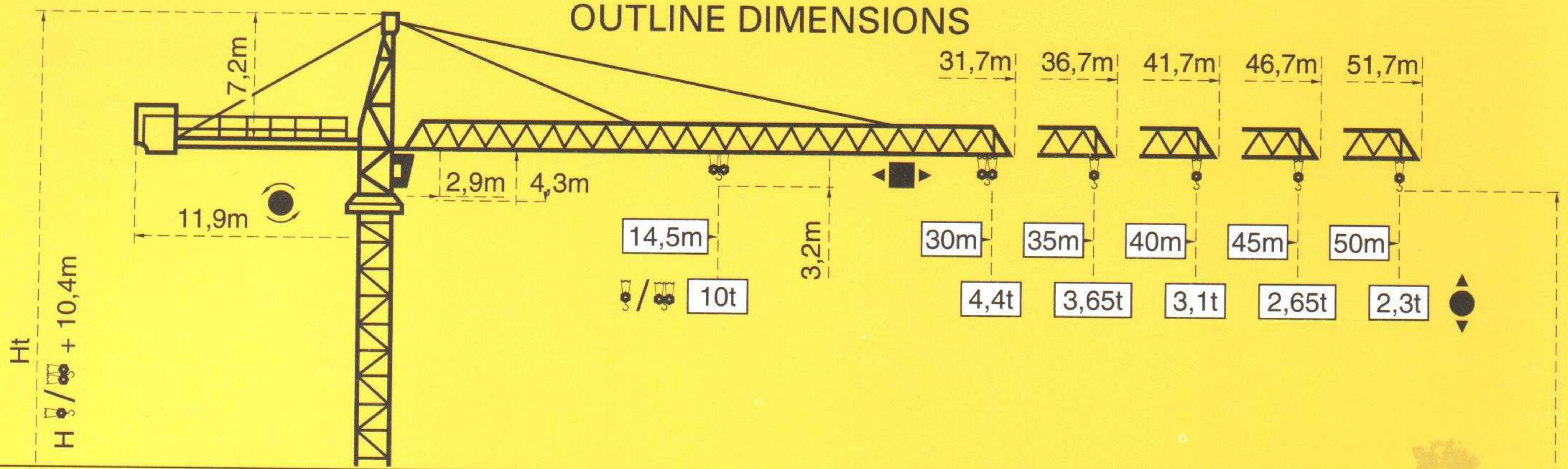
SCM FO/23B Tower Cranes are manufactured under transferred technology from "POTAIN" (FRANCE), per technology transfer agreement No. "84MGS-161015CF", and the design, production and testing method and technology are in conformity with and accepted by "POTAIN", France, in 1989.

The Cranes are up to NFE 52081 (FRANCE) and DIN 15018 (Germany) standards and awarded "THE NATIONAL BEST QUALITY PRODUCT" in PRC in 1991.

SCM FO/23B Tower Cranes can be chassis-mounted for rail travelling, stationary or anchored to and climbing within the building. The maximum hoisting height of the anchoring type is 203.8 meters.

SCM TOPKIT FO/23B

OUTLINE DIMENSIONS



C Mast
 ▣ 1,6 m x 1,6 m

B Mast
 ▣ 2 m x 2 m

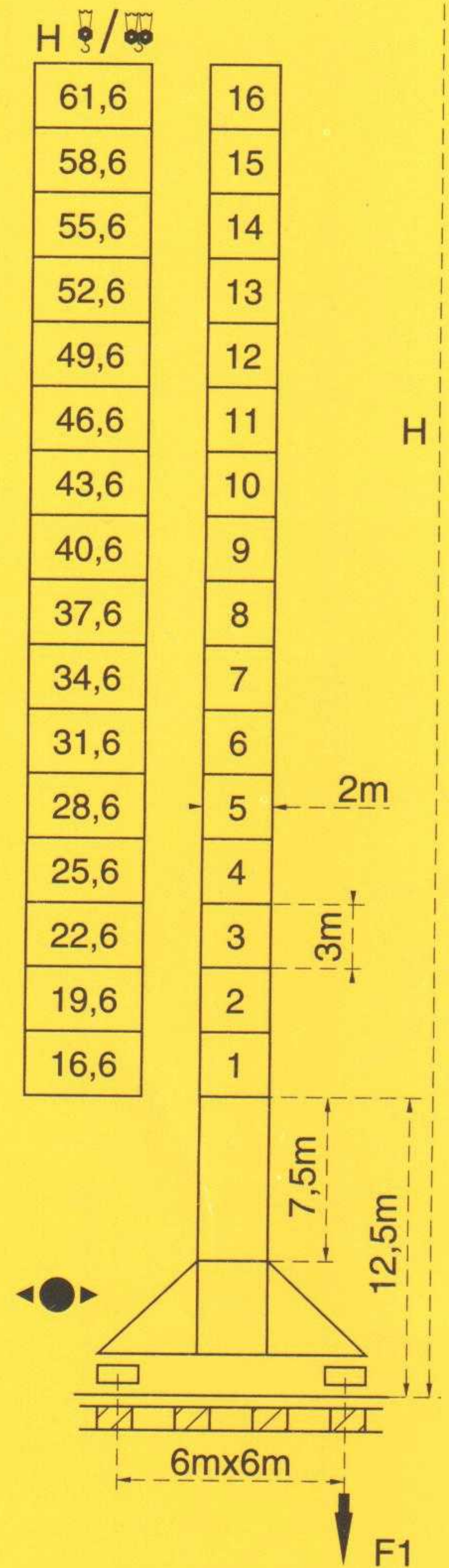
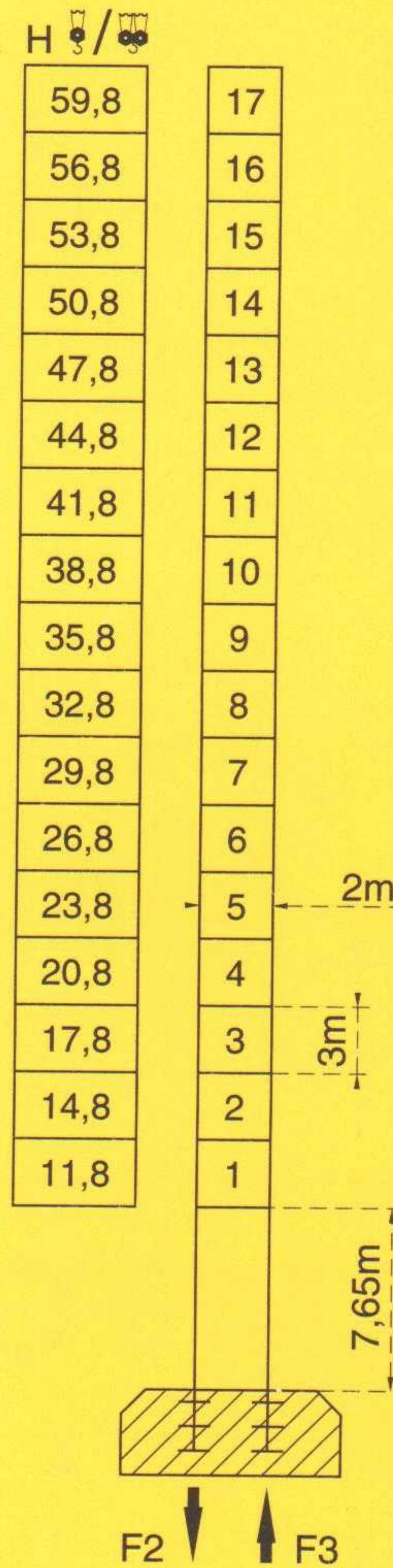
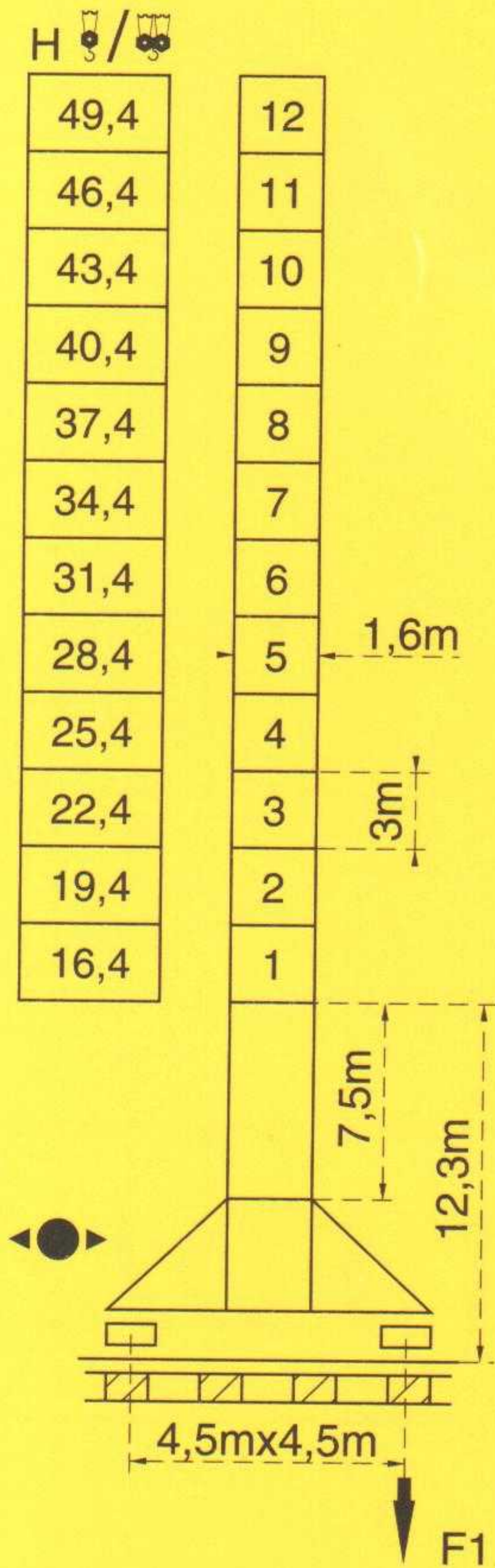
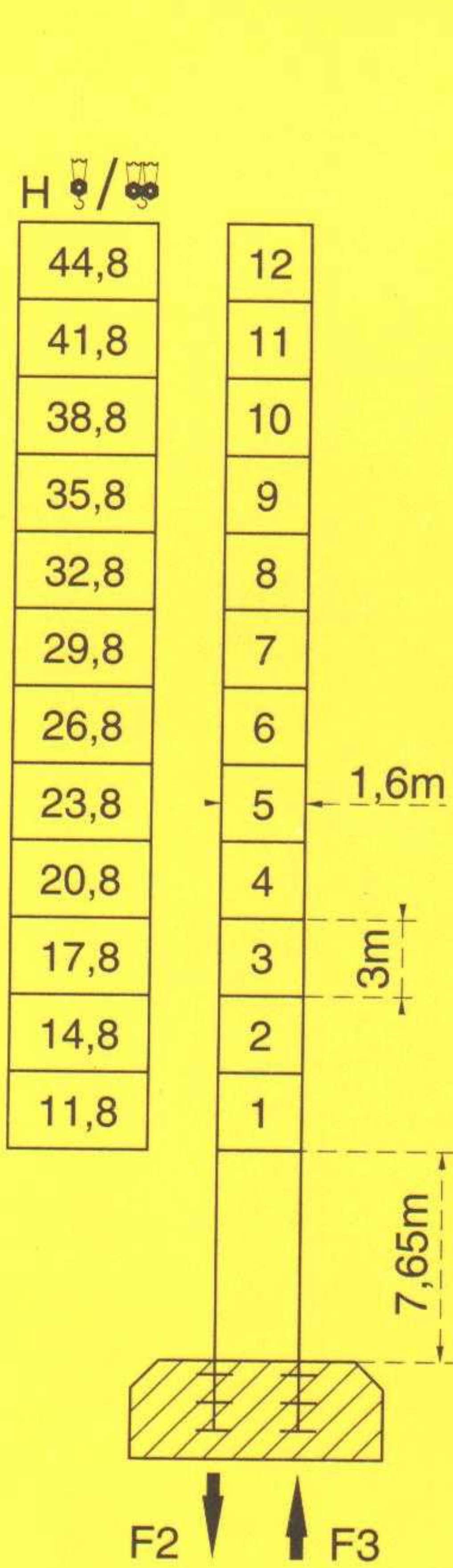
PA 452

SA 452

PA 664

VA 650

$$H_{\text{crane}} = H_{\text{tower}} + 0,7\text{m}$$



F = Reactions

- In service
- Out of service
- ⬆ Without load and ballast with longest jib and maximum height.








F2	● 98 t	■ 118 t
F3	● 66 t	■ 92 t
	⬆ 41 t	

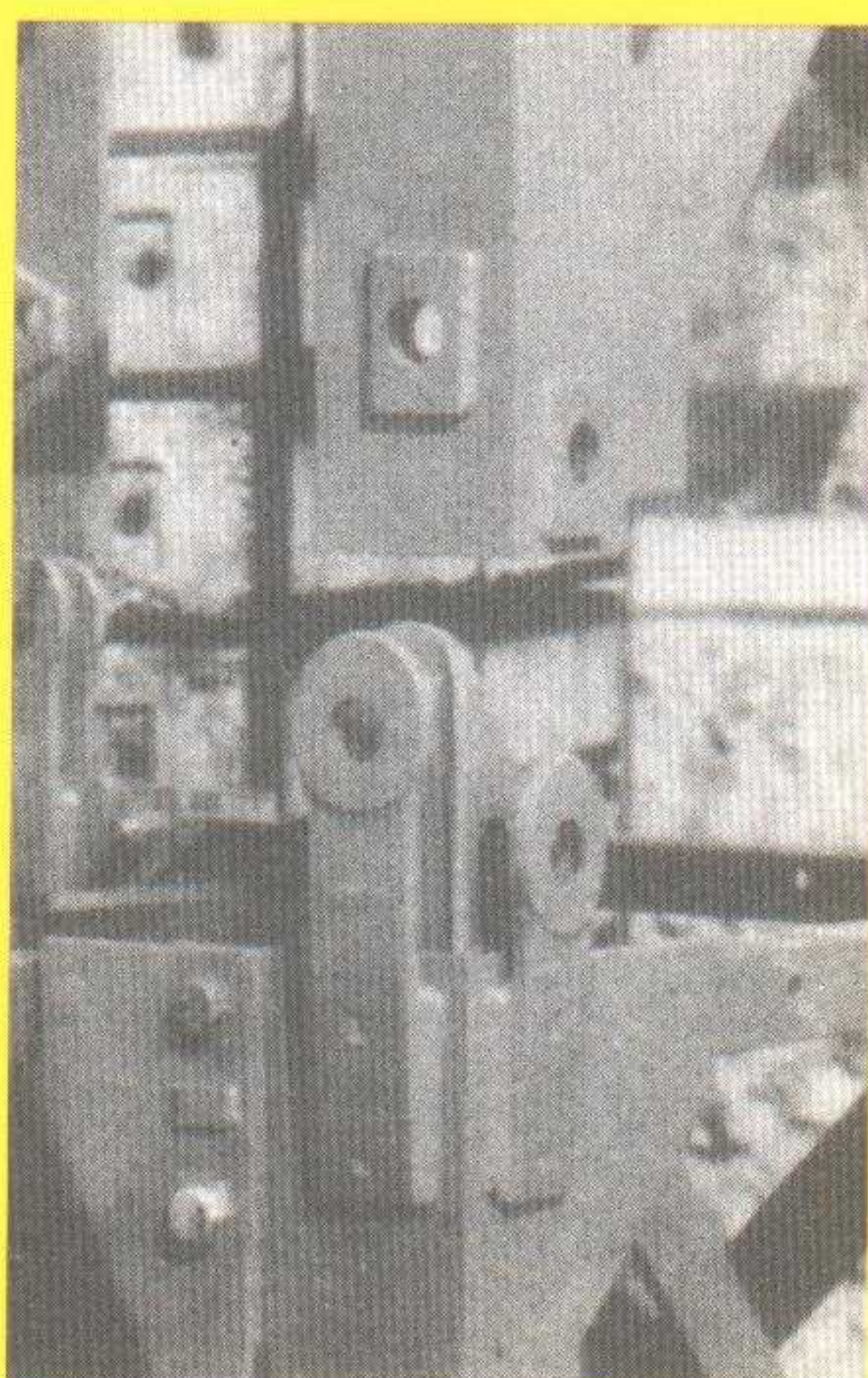
F1	● 70 t	■ 89 t
	⬆ 50 t	

F2	● 108 t	■ 192 t
F3	● 68 t	■ 157 t
	⬆ 57,8 t	

F1	● 86 t	■ 120 t
	⬆ 69 t	

Specification (Mechanisms)

Description	Model	Fall	Speed	m/min	t		ch-PS hp	kW
Hoisting	70 RCS 25 			0 → 50	5	486m >486m*	70HP	51,5
				0 → 100	2,5			
				0 → 25	10			
				0 → 50	5			
Trolleying		x 96	15-30-58			5	3.7	
Slewing		OMD 45	0 → 0.7 tr/min U/min-rpm			2 x 6	2 x 4,4	
Travelling	SA 452  R ≥ 9m	Standard Velocity	12,5-25			2 x 7	2 x 5,2	
	VA 650  R ≥ 12m	Standard Velocity	15-30			4 x 5	4 x 3,7	
Necessary Electric Power		380V 50HZ		Mains supply		115KVA RCS 60KVA		



This kind of coupling ensures accurate, easy and reliable connections between the standard masts.



One jib trolley can be switched from 2 to 4 fall reeving continuously.
To be supplied as per client's specific requirements.