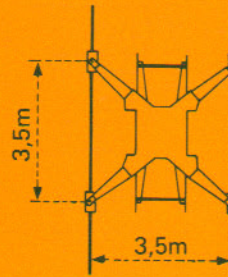
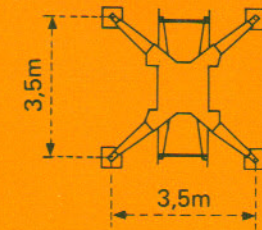
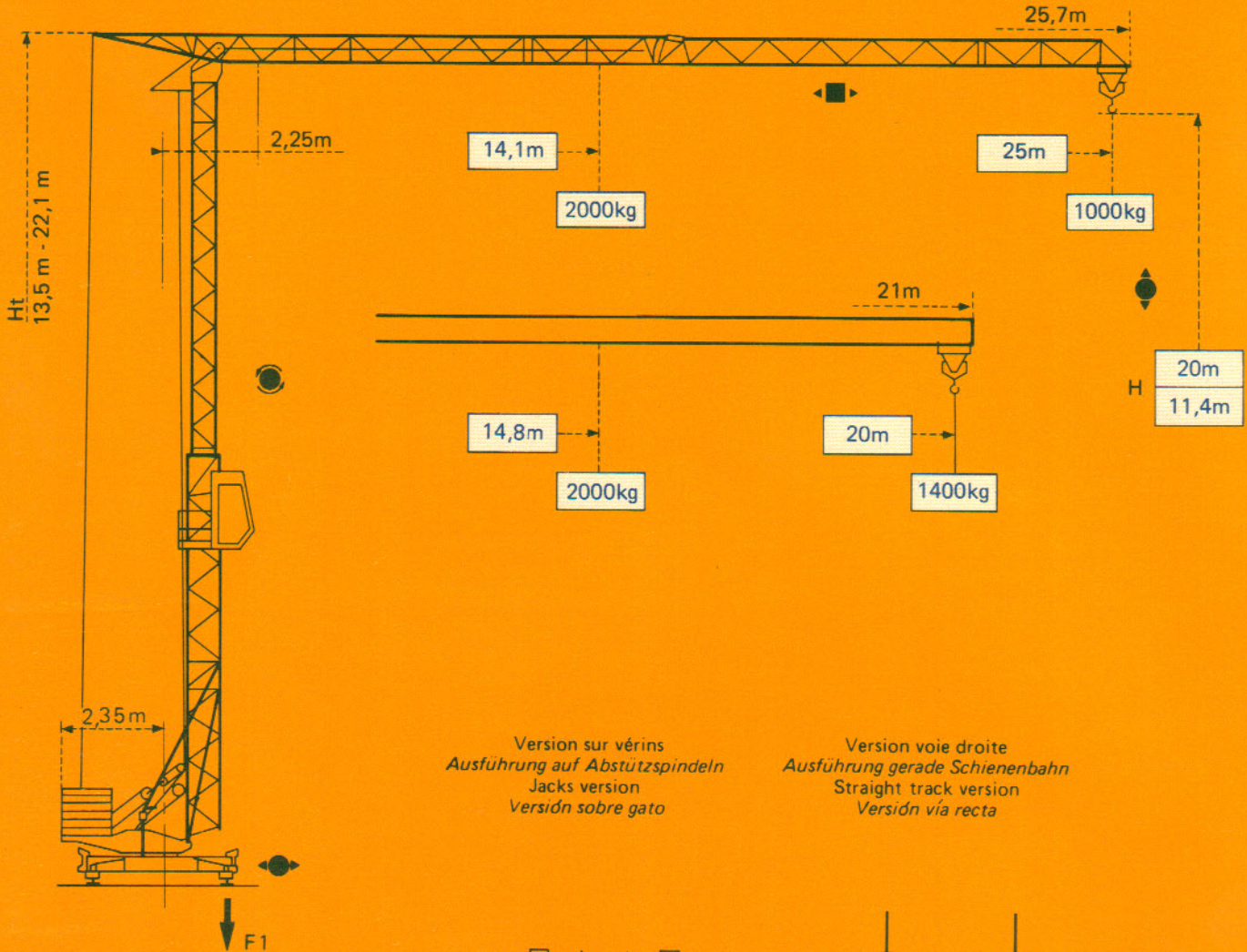


GMR 321 C

POTAIN 



F1 = Réactions Eckdrücke Reactions Reacciones

F1	● 13t	■ 8t
	8,9t	

- En service
- Hors service

A vide sans lest ni train de transport, avec flèche et hauteur maximum.

- In Betrieb
- Ausser Betrieb

Ohne Last, Ballast und Transportachse, mit Maximalausleger und Maximalhöhe.

- In service
- Out of service

Without load, ballast or transport axles, with maximum jib and maximum height.

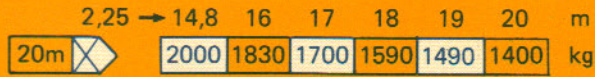
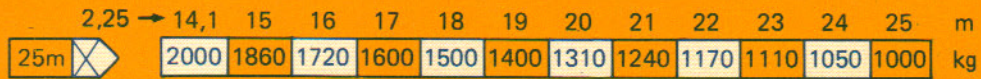
- En servicio
- Fuera de servicio

Sin carga, sin lastre, ni tren de transporte, flecha y altura máximas.

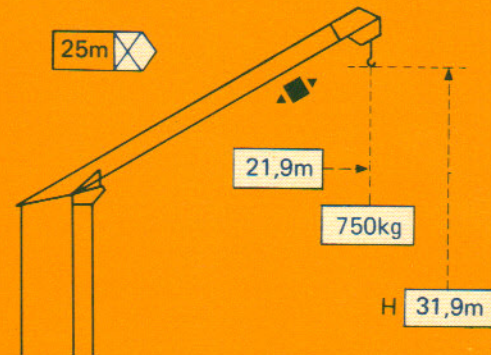
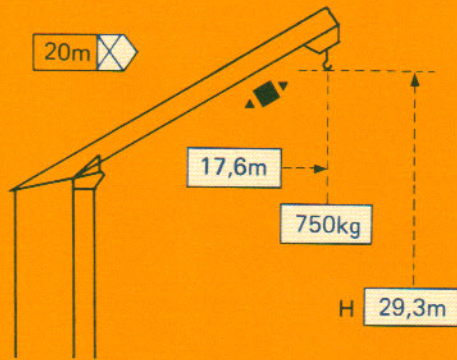
Courbes de charges *Lastkurven* Load diagrams *Curvas de cargas*



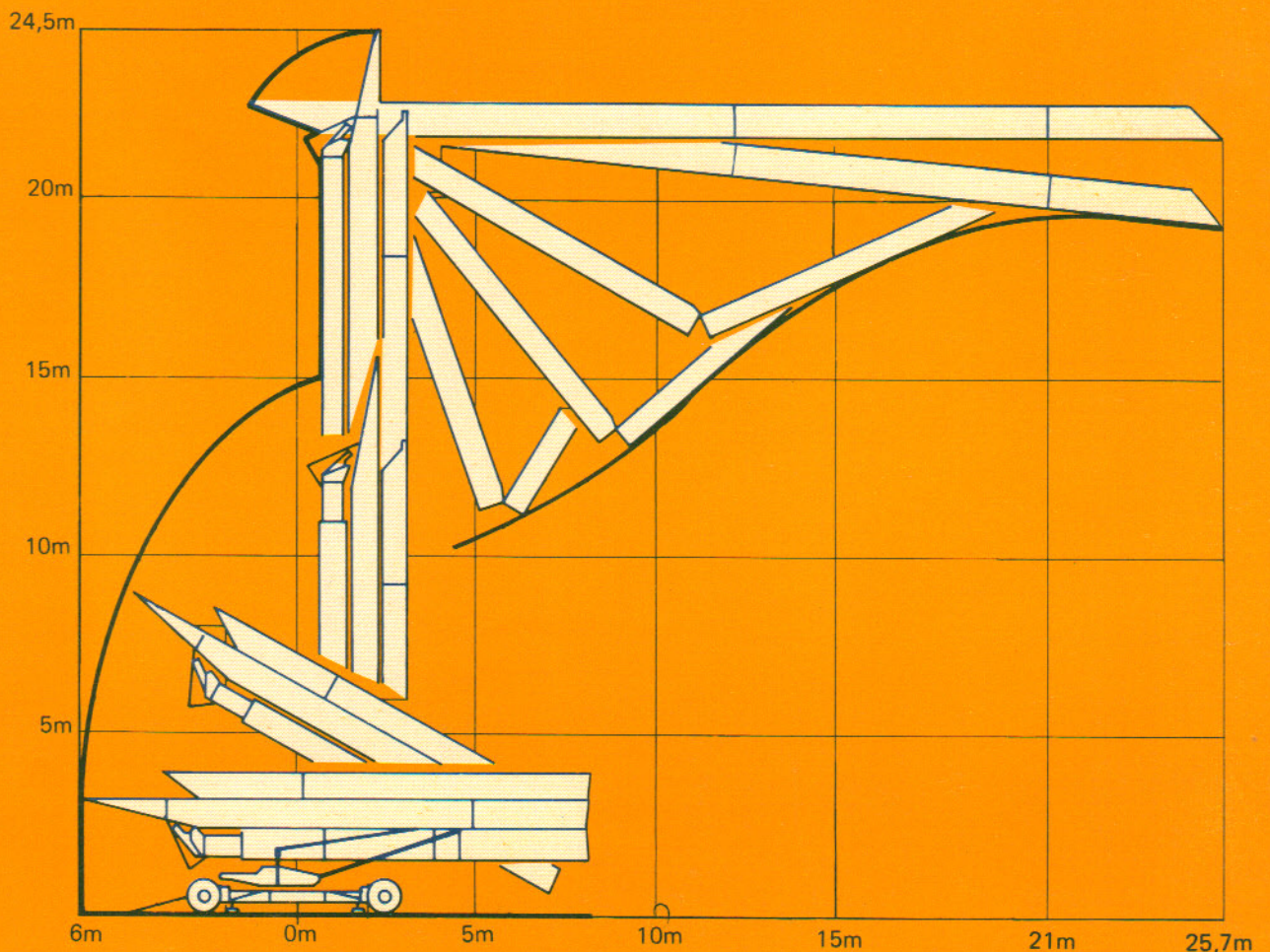
Flèche Ausleger Jib Flecha













Flèche relevée *Ausleger in Steilstellung* Luffing jib *Flecha izada*
 Chariot distributeur *Verfahrbare Laufkatze* Traversing trolley *Carro distribuidor*



Montage *Montage* Erection *Montaje*

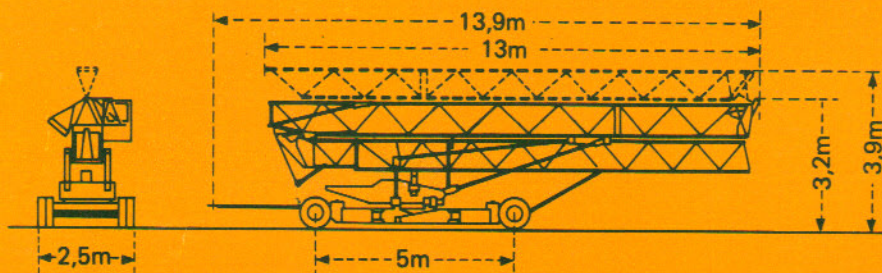


Mécanismes Antriebe Mechanisms Mecanismos

			m/min.	kg	ch-PS hp	kW
Levage Heben Hoisting Elevación	 15 TD PC 10		8	2000	5	3,7
			25	2000	15	11
			50	1000		
Distribution - Katzfahren Trolleying - Distribución		3D1 V5	35		4,5	3,3
		3D2 V5	22 - 44		4,5	3,3
Orientation - Schwenken Slewing - Orientación		RCV 20	0 - 1 tr/min U/min-rpm		3	2,2
Translation - Kranfahren Travelling - Traslación		TVD 121	25		2 x 1,4	2 x 1
Réseau - Netzstrom - Mains supply - Red					380V - 50 HZ	
Puissance électrique nécessaire - Anschlusswert - Necessary electric power - Potencia electrica necesaria					20 KVA	
Groupe électrogène - Stromaggregat - Generator set - Grupo electrogeno					*	

* Nous consulter - Auf Anfrage - Consult us - Consultarnos

Transport Transport Transport Transporte



Version transport lestée : Nous consulter
 Transport mit Ballast, bitte bei uns rückfragen
 Road transported version with ballast : Consult us
 Versión transporte con lastre : Consultarnos

Version semi-portée : Nous consulter
 Ausführung als Sattelaufleger : Auf Anfrage
 Tractor towed version : Consult us
 Versión en semi-remolque : Consultarnos

Conforme à la directive CEE 84/534 sur le niveau acoustique - Gemäss EWG-Richtlinie 84/534 über Schall-Leistungspegel
 In compliance with the EEC 84/534 Instruction on noise level - Conforme con la directiva CEE 84/534 sobre el nivel acústico

NF E 52081 - 82 DIN 15018 H1 B3

POTAIN 

18, rue de Charbonnières, B.P. 173-F 69132 ECULLY Cedex
 Tél. 72.20.20.20 - Télex 330 179 - Télex. Export 375 213 -
 Fax 72 20 20 00

POTAIN GmbH 6082 MÖRFELDEN WALLDORF
 Nordendstr. 79-87 - Postfach 420
 Tél. 06 105 704.0 - Télex 4.1857 45

GMR 321 C

Réf. 1988.44 KXH 3

Modifications réservées - Änderungen vorbehalten - Subject to modification - Modificaciones reservadas

Printed in France