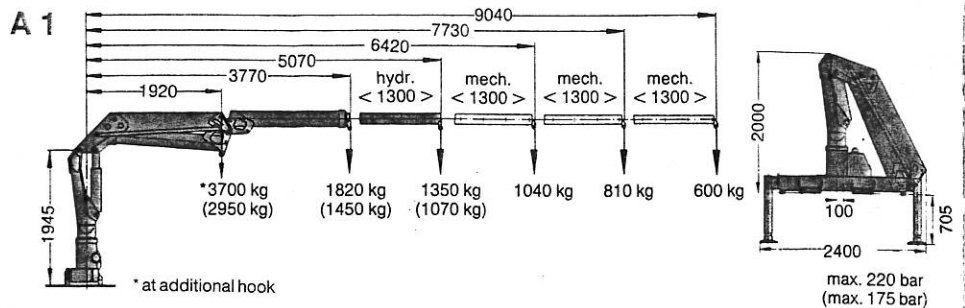




# ATLAS 3006 B

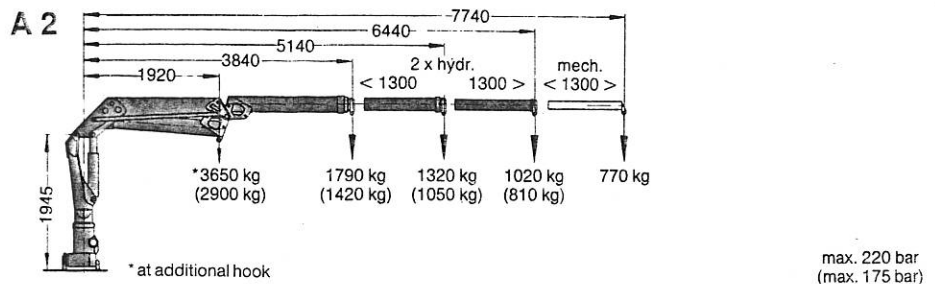
## ATLAS 3006 B 5,1/1

Standard boom length, 1 x hydraulically extended: 5.1 m.  
 Position of boom tip (standard boom, extended), measured from installed height: 6.9 m high, 3.0 m deep.  
 The crane can be hydraulically folded across the carrier vehicle.  
 Tare weight app. 970 kg.



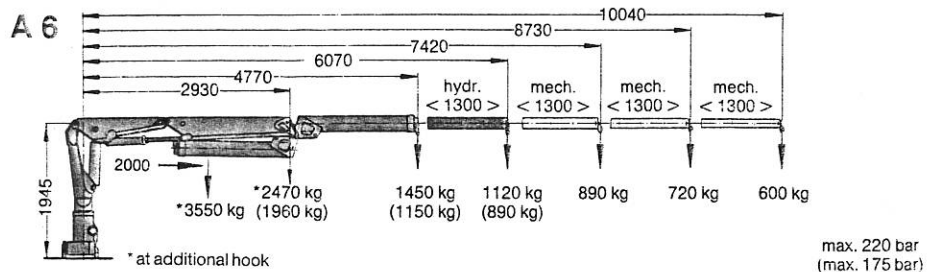
## ATLAS 3006 B 6,4/2

Standard boom length, 2 x hydraulically extended: 6.4 m.  
 Position of boom tip (standard boom, extended), measured from installed height: 8.2 m high, 4.4 m deep.  
 The crane can be hydraulically folded across the carrier vehicle.  
 Tare weight app. 1030 kg.



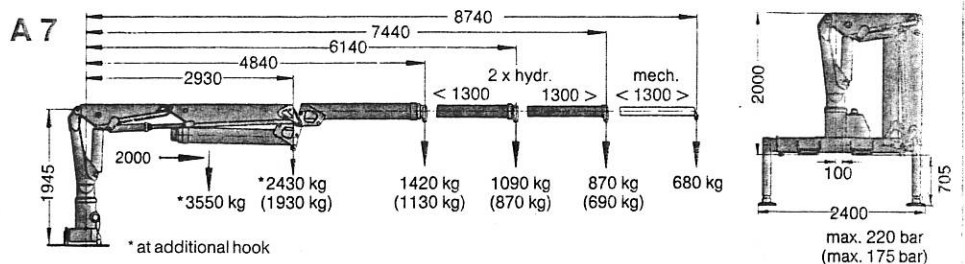
## ATLAS 3006 BL 6,1/1

Standard boom length, 1 x hydraulically extended: 6.1 m.  
 Position of boom tip (standard boom, extended), measured from installed height: 7.8 m high, 2.9 m deep.  
 The crane can be hydraulically folded across the carrier vehicle (folding main boom).  
 Tare weight app. 1070 kg.



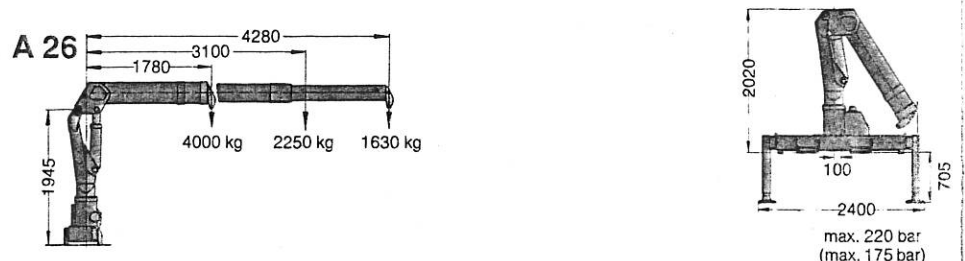
## ATLAS 3006 BL 7,4/2

Standard boom length, 2 x hydraulically extended: 7.4 m.  
 Position of boom tip (standard boom, extended), measured from installed height: 9.1 m high, 4.3 m deep.  
 The crane can be hydraulically folded across the carrier vehicle (folding main boom).  
 Tare weight app. 1140 kg.



## ATLAS 3006 BT 4,3/2

Standard boom length, 2 x hydraulically extended: 4.3 m.  
 Position of boom tip (standard boom, extended), measured from installed height: 6.0 m high, 1.9 m deep.  
 The crane can be hydraulically folded across the carrier vehicle.  
 Tare weight app. 920 kg.



### Technical data:

Load moment category up to 70 kNm (7.0 mt)  
 The stated load capacities apply to a working range describing an arc from the horizontal boom position to the max. lifting height  
 Operating pressure for hook operation and similar operations with hydraulic attachments (e.g. stone stacking fork) max. 220 bar  
 Operating pressure for heavy-duty grab operation (manual selection) max. 175 bar

Required pump discharge rate 30 l/min  
 Slewing range 390°

The weights of individual attachments must be added to the crane's tare weight:  
 Stabilizers with outrigger arms from app. 180 kg to app. 315 kg depending on version  
 Oil filling app. 30 kg

The ATLAS 3006 B crane is suitable for mounting on trucks between the driver's cab and the platform, permanently at the rear of the vehicle or on a detachable rear mounting.

The following additional equipment is available: rope winches, earth grabs, special grabs for handling stone, scrap or timber and other grabs for special-purpose applications.

Also available: control seat mounted on the side of the carrier vehicle.