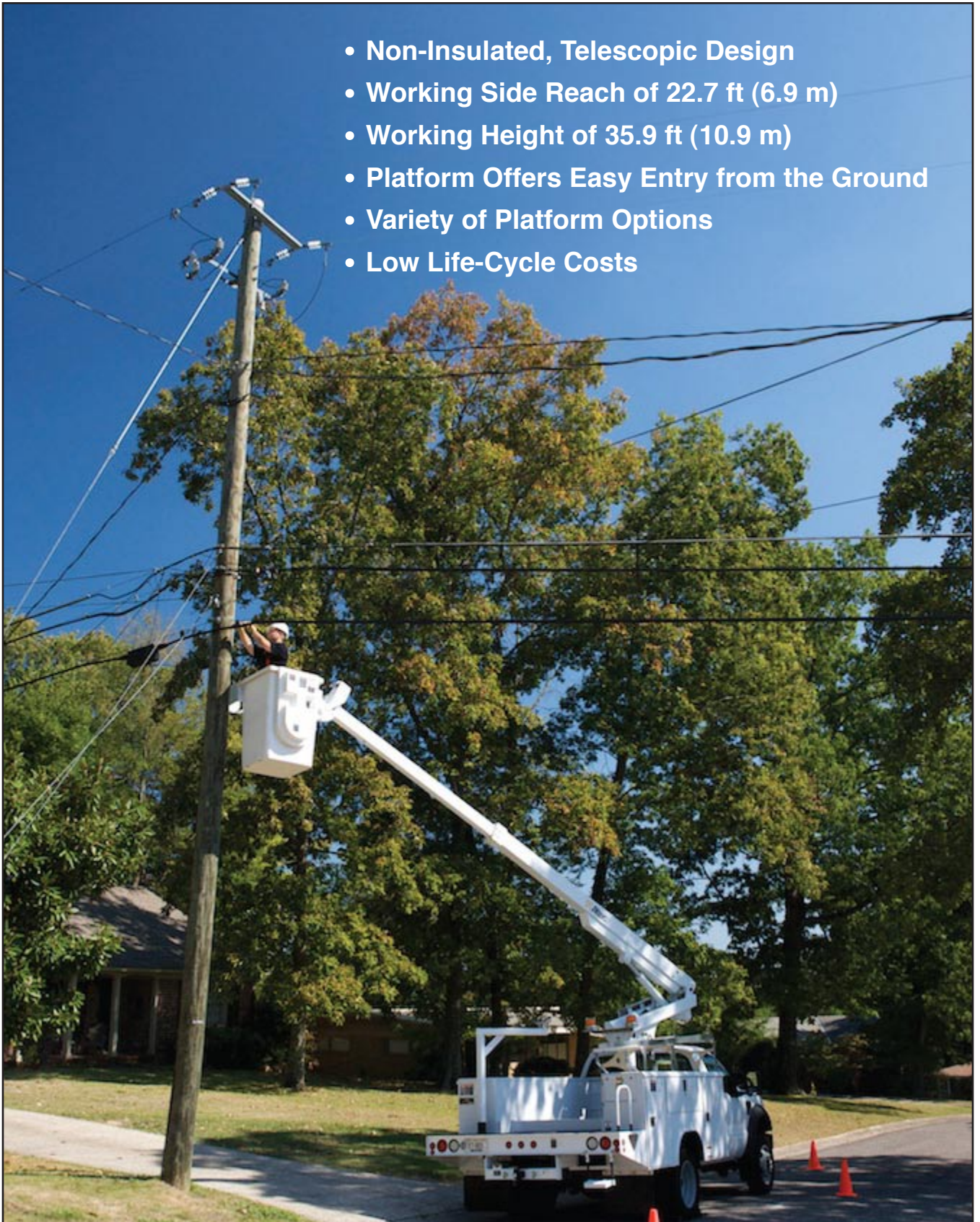




Altec AT200A Telescopic Aerial Device

- Non-Insulated, Telescopic Design
- Working Side Reach of 22.7 ft (6.9 m)
- Working Height of 35.9 ft (10.9 m)
- Platform Offers Easy Entry from the Ground
- Variety of Platform Options
- Low Life-Cycle Costs



STANDARD FEATURES

- Non-Insulated Aerial Device
- All Steel Boom Construction
- Hydraulically Extended Boom
- Non-continuous 370° Rotation
- Engine Start/Stop at Upper and Lower Controls
- Open Center Hydraulic System
- 120 VAC Circuit in Booms with Outlets at the Platform
- Minimum 10,500 lb (4763 kg) GVWR Chassis, 60 in (1524 mm) CA or 84 in (2134 mm) CA

GENERAL SPECIFICATIONS

Ground to Bottom of Platform* End-Mounted Platform Side-Mounted Platform	30.9 ft 30.9 ft	9.4 m 9.4 m
Working Height* End-Mounted Platform Side-Mounted Platform	35.9 ft 35.9 ft	10.9 m 10.9 m
Maximum Reach from Centerline of Rotation to Lip of Platform End-Mounted Platform Side-Mounted Platform	22.7 ft 20.7 ft	6.9 m 6.3 m
Stowed Travel Height, approximate*	11.0 ft	3.4 m
Platform Capacity End-Mounted Platform Side-Mounted Platform	300 lb 350 lb	136 kg 159 kg
Boom Articulation	-13.5° to 80°	
Rotation	370° Non-continuous	

*Based on 40 inch (1016 mm) Chassis Frame Height

Altec Industries, Inc. reserves the right to improve models and change specifications without notice or obligation. Altec Aerial Devices meet or exceed all applicable ANSI Standards as of the date of manufacture.

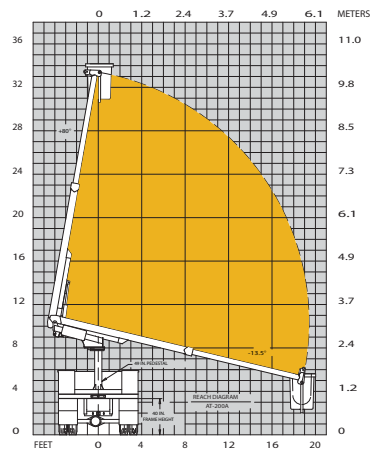
OPTIONS

- Pedestal or Bridge Mountings
- Choice of Platforms:
 - Side or End-Mounted
 - Walk-In Splicer or Rectangular
 - Gravity or Hydraulic Leveling
- Single or Two Speed Controls
- Variable Speed Single Handle Controller
- Choice of Reservoir:
 - Bed-Mounted
 - Pedestal-Mounted
- Airline to Platform
- Canopy and Curtain Assembly
- Secondary Storage System
- Manual Lowering Valve
- Heater for Platform
- Seat for Platform
- Tool Pouches and Trays

RECOMMENDED FEATURES

- Fall Protection System
- Wheel Chocks
- Platform Liner
- Platform Cover

REACH DIAGRAM



Optional Variable Speed Single Handle Controller



End-Mounted Splicer Platform



Optional Canopy Body

Altec Sales and Service

Altec Industries, Inc.

Post Office Box 10264
Birmingham, Alabama 35202
Phone 205/991-7733
Fax 205/991-9993



Manufacturing and Service Facilities Located
Throughout the United States and Canada
www.altec.com