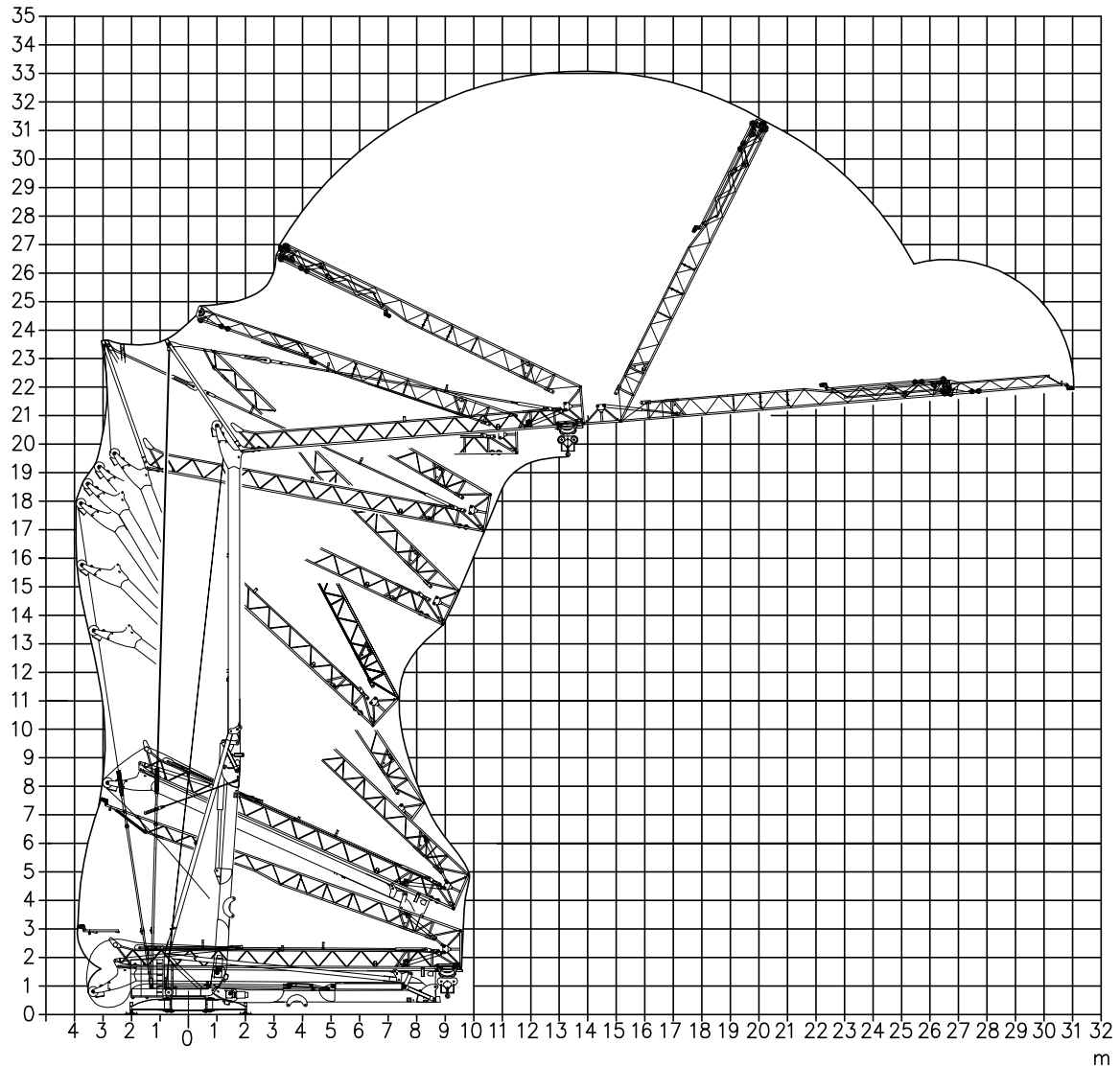


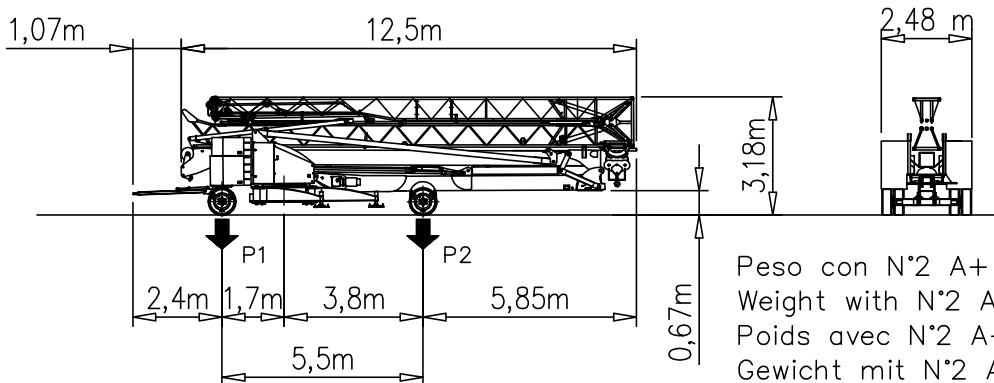
- TRIPHASE -☐ 400 V
- MONOTRIPHASE -☐ 230/400 V

GRU A MONTAGGIO RAPIDO
GRUE A MONTAGE RAPIDE
GRUA DE RAPIDO MONTAJE
GRUA DE MONTAGEM RAPIDA
QUICK SELFRECTING CRANE
HYDRAULISCHER SCHNELLMONTAGEKRAN

Montaggio – Montage – Erection – Montage – Montaje – Montagem





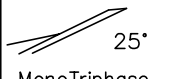
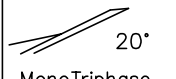
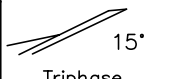
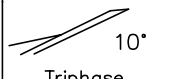
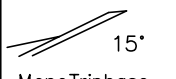
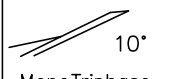
Trasporto – Transport – Transport – Transport – Transporte – Transporte

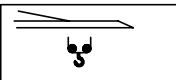
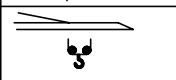
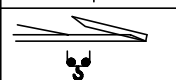
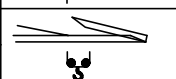
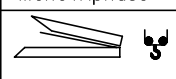
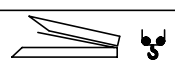


P1	Kg	7850
P2	Kg	8410
Ptot	Kg	16260

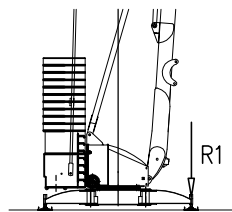
Peso con N°2 A+ N°2 B+ assali
 Weight with N°2 A+ N°2 B+ transport axles
 Poids avec N°2 A+ N°2 B+ essieux de transport
 Gewicht mit N°2 A+ N°2 B+ transportachsen
 Peso con N°2 A+ N°2 B+ ejes de transporte
 Peso com N°2 A+ N°2 B+ eixos de transporte

Curve di carico – Courbes de charges – Load diagrams – LastKurven – Curvas de cargas

 25° Triphase	☒ 400V	<table border="1"> <tr><td>3</td><td>23</td><td>26</td><td>27,7</td><td>m</td></tr> <tr><td>600</td><td>600</td><td>600</td><td>600</td><td>kg</td></tr> </table>	3	23	26	27,7	m	600	600	600	600	kg	 20° Triphase	☒ 400V	<table border="1"> <tr><td>3</td><td>23</td><td>26</td><td>28,4</td><td>m</td></tr> <tr><td>600</td><td>600</td><td>600</td><td>600</td><td>kg</td></tr> </table>	3	23	26	28,4	m	600	600	600	600	kg
3	23	26	27,7	m																					
600	600	600	600	kg																					
3	23	26	28,4	m																					
600	600	600	600	kg																					
 25° MonoTriphase	☒ 230/400V	<table border="1"> <tr><td>3</td><td>23</td><td>26</td><td>27,7</td><td>m</td></tr> <tr><td>600</td><td>600</td><td>600</td><td>600</td><td>kg</td></tr> </table>	3	23	26	27,7	m	600	600	600	600	kg	 20° MonoTriphase	☒ 230/400V	<table border="1"> <tr><td>3</td><td>23</td><td>26</td><td>28,4</td><td>m</td></tr> <tr><td>600</td><td>600</td><td>600</td><td>600</td><td>kg</td></tr> </table>	3	23	26	28,4	m	600	600	600	600	kg
3	23	26	27,7	m																					
600	600	600	600	kg																					
3	23	26	28,4	m																					
600	600	600	600	kg																					
 15° Triphase	☒ 400V	<table border="1"> <tr><td>3</td><td>23</td><td>26</td><td>29,3</td><td>m</td></tr> <tr><td>700</td><td>700</td><td>700</td><td>700</td><td>kg</td></tr> </table>	3	23	26	29,3	m	700	700	700	700	kg	 10° Triphase	☒ 400V	<table border="1"> <tr><td>3</td><td>23</td><td>26</td><td>29,7</td><td>m</td></tr> <tr><td>700</td><td>700</td><td>700</td><td>700</td><td>kg</td></tr> </table>	3	23	26	29,7	m	700	700	700	700	kg
3	23	26	29,3	m																					
700	700	700	700	kg																					
3	23	26	29,7	m																					
700	700	700	700	kg																					
 15° MonoTriphase	☒ 230/400V	<table border="1"> <tr><td>3</td><td>23</td><td>26</td><td>29,3</td><td>m</td></tr> <tr><td>700</td><td>700</td><td>700</td><td>700</td><td>kg</td></tr> </table>	3	23	26	29,3	m	700	700	700	700	kg	 10° MonoTriphase	☒ 230/400V	<table border="1"> <tr><td>3</td><td>23</td><td>26</td><td>29,7</td><td>m</td></tr> <tr><td>700</td><td>700</td><td>700</td><td>700</td><td>kg</td></tr> </table>	3	23	26	29,7	m	700	700	700	700	kg
3	23	26	29,3	m																					
700	700	700	700	kg																					
3	23	26	29,7	m																					
700	700	700	700	kg																					

 Triphase	☒ 400V	<table border="1"> <tr><td>3</td><td>13,53</td><td>14</td><td>18</td><td>22</td><td>26</td><td>30</td><td>m</td></tr> <tr><td>2400</td><td>2400</td><td>2300</td><td>1690</td><td>1320</td><td>1070</td><td>900</td><td>kg</td></tr> </table>	3	13,53	14	18	22	26	30	m	2400	2400	2300	1690	1320	1070	900	kg				
3	13,53	14	18	22	26	30	m															
2400	2400	2300	1690	1320	1070	900	kg															
 MonoTriphase	☒ 230/400V	<table border="1"> <tr><td>3</td><td>13,53</td><td>14</td><td>18</td><td>22</td><td>26</td><td>30</td><td>m</td></tr> <tr><td>2200</td><td>2200</td><td>2100</td><td>1690</td><td>1320</td><td>1070</td><td>900</td><td>kg</td></tr> </table>	3	13,53	14	18	22	26	30	m	2200	2200	2100	1690	1320	1070	900	kg				
3	13,53	14	18	22	26	30	m															
2200	2200	2100	1690	1320	1070	900	kg															
 Triphase	☒ 400V	<table border="1"> <tr><td>3</td><td>13,7</td><td>14</td><td>16</td><td>18</td><td>20</td><td>22</td><td>24</td><td>26</td><td>m</td></tr> <tr><td>2400</td><td>2400</td><td>2350</td><td>2000</td><td>1720</td><td>1510</td><td>1350</td><td>1210</td><td>1100</td><td>kg</td></tr> </table>	3	13,7	14	16	18	20	22	24	26	m	2400	2400	2350	2000	1720	1510	1350	1210	1100	kg
3	13,7	14	16	18	20	22	24	26	m													
2400	2400	2350	2000	1720	1510	1350	1210	1100	kg													
 MonoTriphase	☒ 230/400V	<table border="1"> <tr><td>3</td><td>13,7</td><td>14</td><td>16</td><td>18</td><td>20</td><td>22</td><td>24</td><td>26</td><td>m</td></tr> <tr><td>2200</td><td>2200</td><td>2150</td><td>2000</td><td>1720</td><td>1510</td><td>1350</td><td>1210</td><td>1100</td><td>kg</td></tr> </table>	3	13,7	14	16	18	20	22	24	26	m	2200	2200	2150	2000	1720	1510	1350	1210	1100	kg
3	13,7	14	16	18	20	22	24	26	m													
2200	2200	2150	2000	1720	1510	1350	1210	1100	kg													
 Triphase	☒ 400V	<table border="1"> <tr><td>3</td><td>13,3</td><td>m</td></tr> <tr><td>2400</td><td>2400</td><td>kg</td></tr> </table>	3	13,3	m	2400	2400	kg	 MonoTriphase	☒ 230/400V	<table border="1"> <tr><td>3</td><td>13,3</td><td>m</td></tr> <tr><td>2200</td><td>2200</td><td>kg</td></tr> </table>	3	13,3	m	2200	2200	kg					
3	13,3	m																				
2400	2400	kg																				
3	13,3	m																				
2200	2200	kg																				

Reazioni – Reactions – Réactions – Eckdrücke – Reacciones – Reações



R1 ● 19 t ■ 13 t

▲ 10 t ○ 20,6 t

{ N°2 A=3500Kg (1750Kg x 2)
 N°2 B=2100Kg (1050Kg x 2)
 N°12 C=15000Kg (1250Kg x 12)

● Reazioni in servizio

■ Reazioni fuori servizio

▲ Peso della gru senza assali

○ Peso zavorra rotante

● Reactions in service

■ Reactions out of service

▲ Dead weight without transport axles

○ Ballast weight

● Réactions en service

■ Réactions hors service

▲ Poids de construction sans essieux

○ Poids du lest

● Reaktionskräfte in betrieb

■ Reaktionskräfte außer betrieb

▲ Konstruktionsgewicht ohne transportachse

○ Ballastgewicht

● Reacciones en servicio

■ Reacciones fuera de servicio

▲ Peso de la grua sin tren de transporte

○ Peso de lastre

● Em serviço

■ Fora de serviço

▲ Peso de la grua sem carro de transporte

○ Peso de lastre rotativo

Triphase – 400V	V9.32 Sollevamento Hoisting Levage Heben Elevaçiõn Elevaçao						V9.32 6.6 Kw (9 Hp) 17.5 kVA 	
		m/min	4	13	32			40
		t	2.4	2.4	1.0			0.6
Carrello Trolleying Distribution Katzfahren Distribuciõn Distribuiçao			1a	0 → 30		m/min	2.2 kW (3 Hp)	
			1a					
			2a					
Rotazione Slewing Orientation Schwenken Orientaçiõn Rotaçao			1a	0 → 0.8		giri/min tr/min rp/min	2.2 kW (3 Hp)	
			2a					
			3a					

MonoTriphase – 230/400V	V9.32 Sollevamento Hoisting Levage Heben Elevaçiõn Elevaçao						V9.32 6.6 Kw (9 Hp) 17.5 kVA 	
		m/min	4	11	25			35
		t	2.2	2.2	1.0			0.6
Carrello Trolleying Distribution Katzfahren Distribuciõn Distribuiçao			1a	0 → 30		m/min	2.2 kW (3 Hp)	
			1a					
			2a					
Rotazione Slewing Orientation Schwenken Orientaçiõn Rotaçao			1a	0 → 0.8		giri/min tr/min rp/min	2.2 kW (3 Hp)	
			2a					
			3a					

Rete elettrica – Réseau – Mains supply – Netzstrom – Red – Alimentação	230/400V – 50 Hz
--	------------------

Potenza elettrica necessaria – Puissance électrique nécessaire Necessary electric power – Anschlusswert – Potencia electrica necesaria	3Hp – 17,5 kVA 1Hp – 2 kVA
---	-------------------------------

AFM Gru FMgru s.r.l.
 via Emilia 11–29010 Pontenure PC ITALY
 tel. 0523/510446 ric.aut. fax 0523/510365
 www.fmgru.it e-mail: info@fmgru.com

FEM 1.001–A3
2000/14/CE



Documento commerciale non contrattuale
Per tutte le informazioni tecniche riferirsi
alle corrispondenti istruzioni

Unverbindliches Vertriebsdokument.
Für technische Informationen, siehe die
entsprechenden Anweisungen.

This commercial document is not legally
binding. For any technical information, please
refer to the corresponding instructions.

Documento commercial non contractual
Para cualquier información técnica,
ver la noticia correspondiente.

Code: 15ICA37B55A0			
Ed.	Data	Rev	Data
1	22.09.11	3	07.06.13