

SPR 48 Workkrane

ON & OFF THE ROAD OR RAIL —
REACHING NEW HEIGHTS
AND WORKING HARDER THAN EVER.



LITTLE *Giant*

For more than a half-century, the Little Giant Corporation has been a name synonymous with the railroad industry in producing hydraulic track cranes, rail dedicated cranes, truck mounted cranes and rough terrain material handlers. Little Giant cranes are working every day in every corner of the world and are known for their ease of maintenance and cost-effective design.



217 Patneau Drive
Winona, Minnesota 55987
Phone: (507) 454-1563
Fax: (507) 453-6441
www.littlegiantcorp.com

SPR 48 Workcrane

SPECIFICATIONS

100% Rail dedicated self-propelled 20-ton lattice boom is a true hybrid workhorse.

With the ability to travel the rails on hook-up to a work train, this crane is unmatched in durability and strength of its components. Tackle the tough jobs of picking scrap steel with an optional magnet or use a clam shell bucket to empty railcars.

This **SPR 48 Workcrane** is custom-built to your specifications and has many available options. The SPR 48 has been completely updated with railroad safety items including special pinch point areas, reflective striping, flashing beacons, fire extinguishers, air horns, and color-coded fuel and hydraulic tanks.

The Little Giant SPR 48 is the railroad's choice for a real workhorse!

UPPER SPECIFICATIONS

ENGINE

- Cummins QSB-6.7-Tier 3
- 215 HP (160kw) @ 2,500 RPM
- 655 lb/ft torque (888Nm) @ 1,500 RPM

ELECTRICAL

12 Volt w/100 Amp Alternator, Heavy Duty Battery, Accessories, Operator Indicators, and Emergency Hydraulic Pump

MASTER CLUTCH

Disconnected Clutch for Cold Weather Starting

HYDRAULIC SYSTEM

A Triple Pad Pump Drive Operates Two Variable Displacement, Hydrostatically

Controlled Pumps and a Double or Triple Rotary Gear Pump to Power Crane Functions

TURNTABLE

Ball Bearing, Single Row, Bolted to Upper Structure and Carrier for Easy Removal

CONTROLS

Air, Variable Control, Adjustable for Self-Centering or Lock-In Operation

THROTTLE

Variable Speed, Hand - *Optional* Foot Throttle

SWING SPEED

6 RPM

LINE SPEED

198 FPM

LINE PULL

13,000 lbs. with 12" Drum

DRUM CLUTCHES

Two Shoe, Internal Expanding, Air Operated, 21-3/4" Diameter x 3" Wide

DRUM BRAKES

External Contracting, Band Type, 25" Diameter x 4" Wide

POWER LOAD LOWERING

Both Drums

BOOM HOIST

Power Up & Power Down, Independent of ALL Other Functions

STANDARD FEATURES

Telescopic Boom Backstops, Automatic Boom Hoist Kickout, Boom Angle Indicator, Pendant Cable Suspension, Signal Horn, Tool Box, Fire Extinguisher, Anti-Two Block Warning, Triple Sheave Boom Point

OPTIONAL

Third Drum, Boom Point Fairlead, Magnet Equipment, Crane Hook Readout Systems, Train Air Supply, Car Dump System, Hydraulic Out & Down Outriggers



CARRIER SPECIFICATIONS

OPERATING WEIGHT

90,000 lbs.

DRAWBAR PULL

18,000 lbs.

TRAVEL DRIVE

A Variable Displacement Hydraulic Motor Provides Power through a Power Shift, Three-Speed, Full Reversing Transmission to both Axles. Axles are Right Angle, Shaft Mounted, Railway Speed Reducers with Torque Arm Mounts. Axles also have Pneumatic Towing Disconnects for In-Train Towing. Rail Speed when not being towed Infinitely Variable to 28 MPH Maximum.

FRAME

18" x 71# Wide Flange Beam Construction with 1-1/2" End Plates

AXLE

28" MW Wheel with AAR Standard 6x11 Bearings and AAR Type Brakes with Straight and Automatic Control

SUSPENSION

Rubber Springs - All Rubber Suspension

COUPLER

Type 'E' Automatic Engine Coupler ADF Pattern BE64 (AAR Standard) Spring Loaded

All specifications are subject to change.



217 Patneau Drive
Winona, Minnesota 55987
Phone: (507) 454-1563
Fax: (507) 453-6441
www.littlegiantcorp.com

SPR 48 LOAD CHART

LENGTH FT.	RADIUS FT.	ANGLE °	LOWER Boom Mount Over End on Rail or 360° on Outriggers	UPPER Boom Mount Over End on Rail or 360° on Outriggers	EITHER Boom Mount Over Side on Rail
30'	10	75	40,000	40,000	30,200
	12	71	40,000	36,800	23,700
	15	65	35,600	28,500	17,800
	20	54	25,200	20,000	12,500
	25	41	18,000	14,500	9,500
	30	23	12,900	9,600	7,600
35'	12	74	40,000	36,000	23,600
	15	69	34,900	28,100	17,700
	20	59	25,200	20,200	12,400
	25	50	19,200	15,200	9,400
	30	38	14,700	11,500	7,500
	35	21	10,500	7,800	6,100
40'	15	71	34,100	27,500	17,700
	20	64	24,700	20,000	12,300
	25	55	19,200	15,300	9,300
	30	46	15,200	12,000	7,400
	35	35	12,100	9,300	5,000
	40	19	8,900	6,500	5,000
45'	15	74	33,100	27,000	17,600
	20	67	24,200	19,600	12,200
	25	60	18,900	15,300	9,200
	30	52	15,400	12,200	7,300
	35	43	12,500	9,800	5,900
	40	33	10,100	7,700	5,000
50'	15	75	32,300	26,400	17,500
	20	69	23,600	19,300	12,100
	25	63	18,600	15,100	9,100
	30	56	15,200	12,100	7,200
	35	49	12,600	9,900	5,800
	40	41	10,400	8,100	4,800
55'	15	75	32,300	26,400	17,500
	20	69	23,600	19,300	12,100
	25	63	18,600	15,100	9,100
	30	56	15,200	12,100	7,200
	35	49	12,600	9,900	5,800
	40	41	10,400	8,100	4,800

1. All operators and support personnel shall read and fully understand manufacturer furnished operator's manual, the latest applicable American National Standards Institute (ANSI) Safety Standards for Cranes, and any applicable federal, state, or local safety regulations before operating machine. Crane and load ratings comply with ANSI and Power Crane & Shovel Association (PCSA) Standards.

2. ALL "ON OUTFRIGGER" lifts shall be made with outrigger beams fully extended and jacks extended to fully support and level machine.

3. Underlined ratings are based on machine's structural strength. All other ratings do not exceed 85% of tipping load on rail and 80% of tipping on outriggers with machine stable on firm ground.

4. **DO NOT EXCEED** crane load ratings. When load radius or boom angle are between listed values, use the smaller load ratings. DO NOT ATTEMPT TO TIP MACHINE TO DETERMINE ALLOWABLE LOADS.

5. Weight of hook blocks, buckets, slings, and all other load handling devices are not accounted for in the load chart. The load handling device must be considered as part of the load.

6. Reduce ratings appropriately for wind conditions, speed of operation, soft or uneven supporting surfaces, etc.

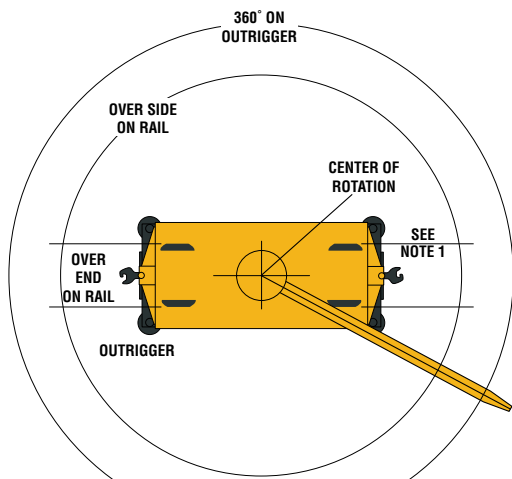
7. Load ratings apply to this machine **ONLY** as originally manufactured and equipped. Unauthorized modification or optional equipment may reduce load capacity. Please consult LITTLE GIANT **before** modification or use of optional equipment not covered on this chart.

8. These load ratings are for lift service only. Consult & adhere to appropriate load ratings chart for other applications (*clamshell, dragline, magnet, etc.*)

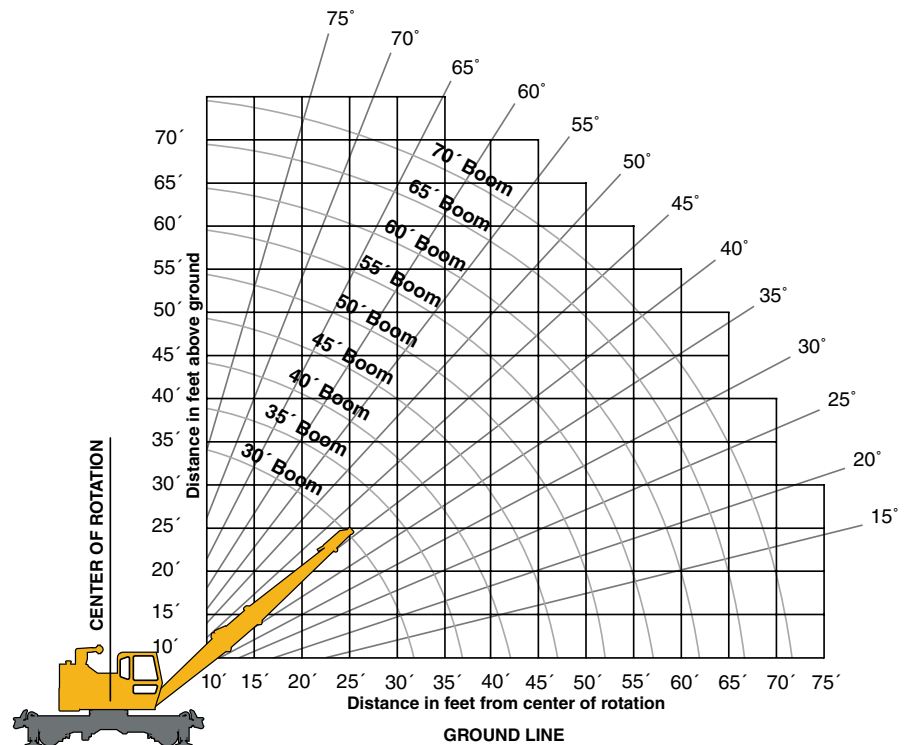
RECOMMENDATIONS: *5/8-6X19 Extra Improved Plowsteel IWRC Wire Rope

PARTS OF LINE	1	2	3	4	5
MAX. HOOK LOAD	10,000	20,000	30,000	40,000	50,000

All specifications are subject to change.



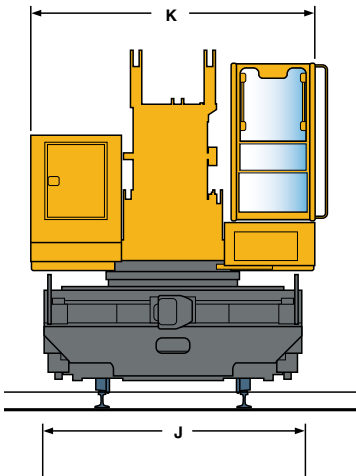
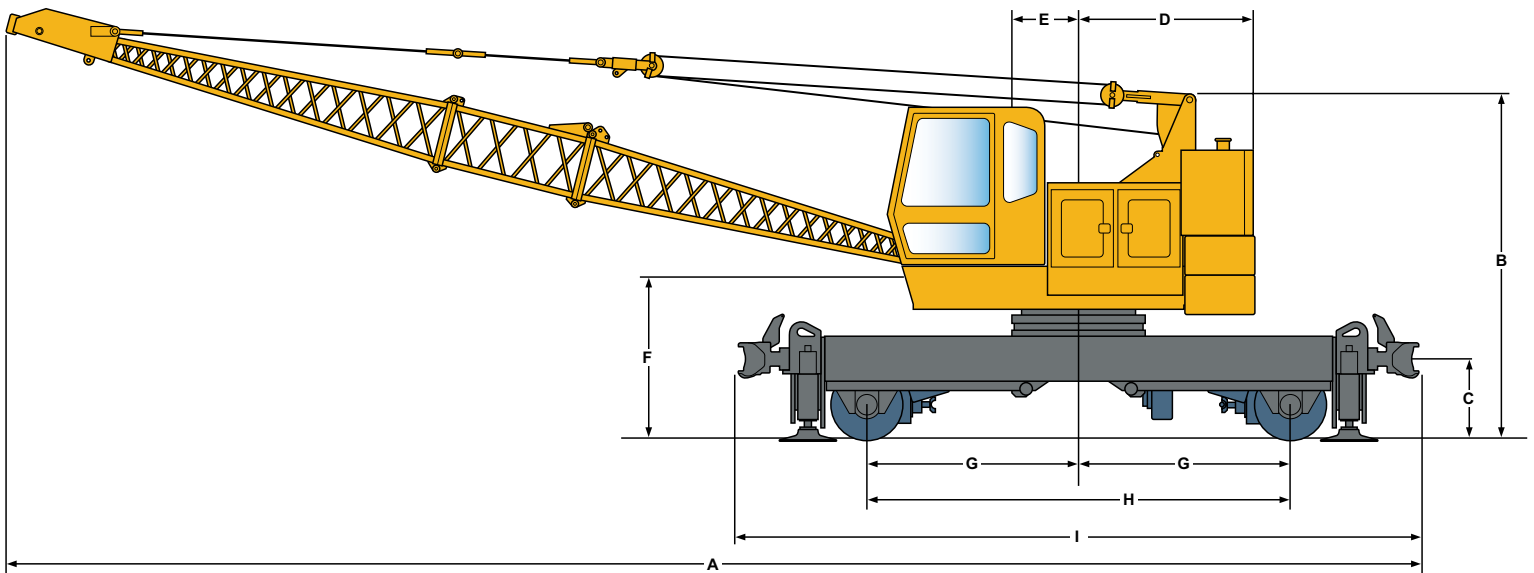
NOTE 1: These lines determine the limiting position of any load for operation within indicated working areas.



217 Patneau Drive
Winona, Minnesota 55987
Phone: (507) 454-1563
Fax: (507) 453-6441
www.littlegiantcorp.com

SPR 48 Workcrane

GENERAL DIMENSIONS



Description	U.S.	Metric
A Overall length with 30' Boom	43' 0"	13.10m
B Maximum Height Above Rail	11' 8"	3.56m
C Rail to Counterweight	4' 1"	1.24m
D Maximum Swing Clearance	6' 3"	1.91m
E Boom Foot Pin to Center of Rotation	1' 9"	0.55m
F Rail to Boom Foot Pin	6' 8"	2.03m
G FRONT/Rear Axle to Center of Rotation	7' 4"	2.23m
H Wheelbase	14' 8"	4.47m
I Carrier Length with Couplers	24' 0"	7.32m
J Carrier Width	9' 0"	2.74m
K Overall Width for Travel	10' 5"	3.17m
L Operating Weight	*90,000 lbs.	*40823 kg.

* Estimated Operating Weight

All specifications are subject to change.

OPTIONS FOR MODEL SPR 48 WORKCRANE

Model SPR 48 Rail Dedicated 20-Ton Crane with 215 HP Cummins QSB-6.7-Tier 3

- 5' Boom Extension with Pendant Cables
- 10' Boom Extension with Pendant Cables
- 20' Boom Extension with Pendant Cables
- Full Revolving Fairlead
- Boom Tip Fairlead
- LSI Load Moment System
- A-2-B Load Moment System
- Drum Rotation Indicators (both drums)
- Anti-Vandal Kit for Carrier and Upper
- 10-Ton Hook Block
- 20-Ton Hook Block
- 3rd Drum Winch (hydraulic drive)
- Air Conditioner - Upper Cab
- Outrigger - Out and Down Cab Controlled
- Tagline - Single Barrel
- Electro-magnet 10KW Generator w/Tagline and Controls
- 40" Magnet
- 1/2 Yard Dragline Bucket
- 3/4 Yard Dragline Bucket
- Air Car Dump

NOTE: For clamshell and dragline applications you will need to order a revolving fairlead, boom tip fairlead, and a tagline.



A Manitex International, Inc. Company



217 Patneau Drive
Winona, Minnesota 55987
Phone: (507) 454-1563
Fax: (507) 453-6441
www.littlegiantcorp.com