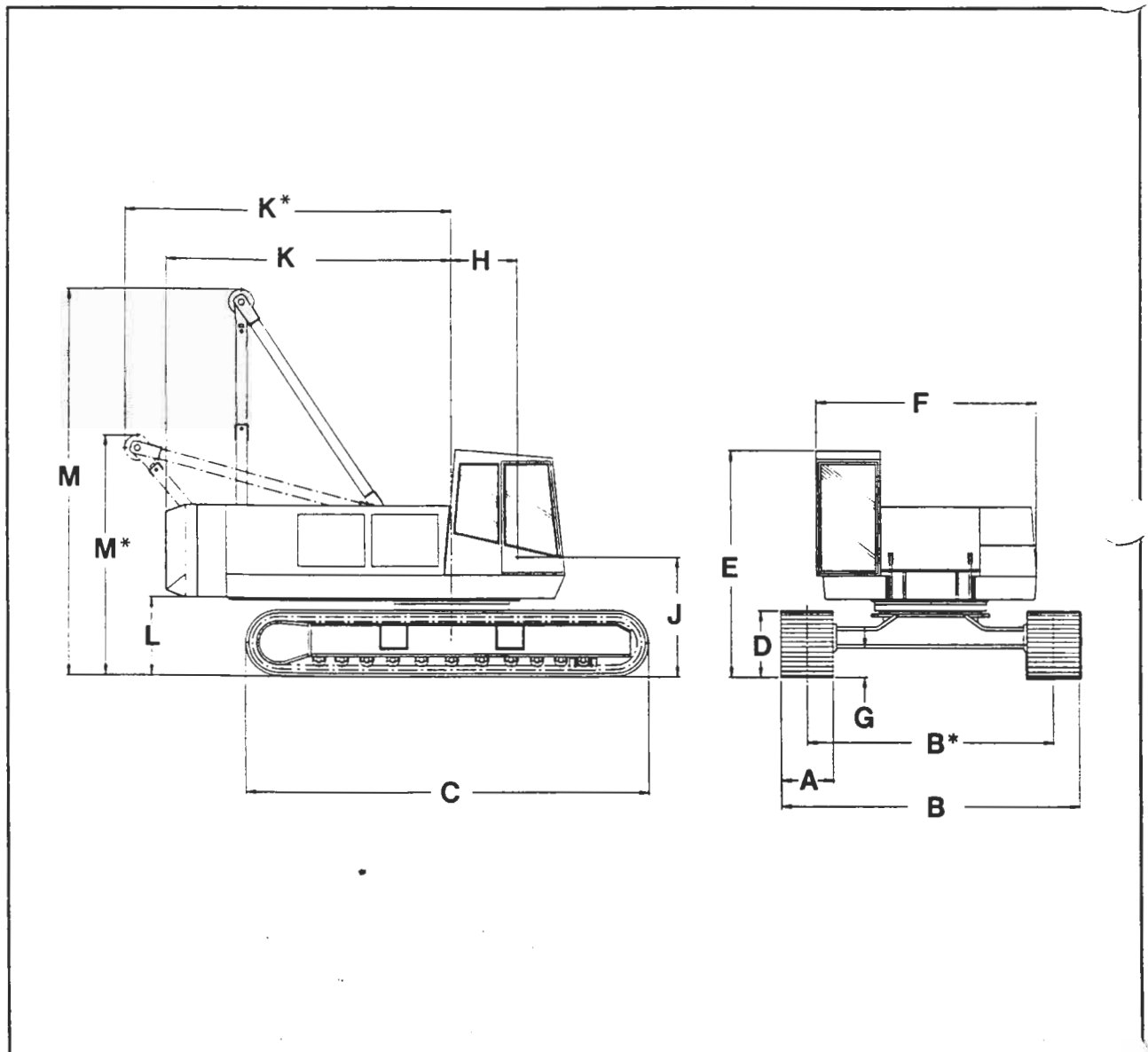


MACHINE WEIGHTS & DIMENSIONS

Machine dimensions



		mm	ft Ins
A	Width of track plates	750	2'5"
B	Width of tracks extended	4320	14'2"
B *	Width of tracks retracted	3300	10'10"
C	Length of tracks	5770	18'11"
D	Height of tracks	960	3'2"
E	Height of operators cab	3260	10'8"
F	Width of cab	3200	10'6"
G	Ground clearance under machine	420	1'5"
H	Boom foot pin centre of rotation	940	3'0"
J	Height of boom foot pin	1720	5'8"
K	Radius of rear end	4160	13'8"
K *	Radius over folded 'A' frame	4700	15'5"
L	Clearance under revolving frame	1120	3'8"
M	Height over 'A' frame	5550	18'3"
M *	Height over folded 'A' frame	3450	11'4"

Transportation weights

Machine weight (approximate): Machine with basic 12 metre boom.

Machine	kg	lb
Lifting equipment	47600	104910
*Dragline equipment	47600	104910
*Grabbing equipment	47200	104028
* Not illustrated.		

Ground Bearing Pressure

Machine with basic boom	
kg / cm ²	lbf / in ²
0.61	8.8

Base machine c/w lower boom

Weight		Dimension 'A'	
kg	lb	mm	ft in
45622	100578	11200	36'9"
	<i>45 TON</i>		

Base machine component weight breakdown

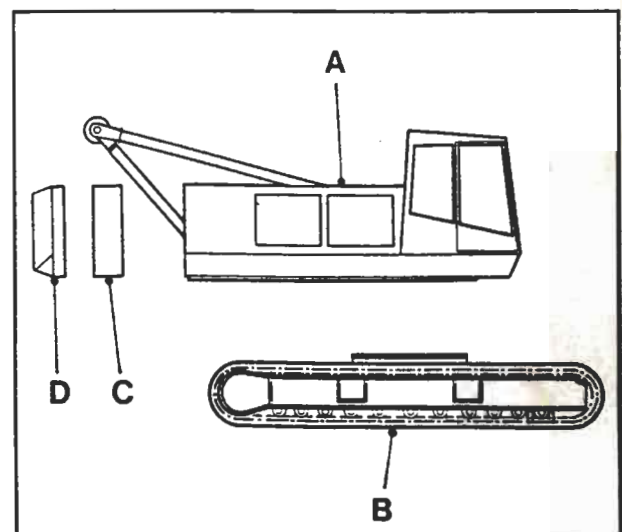
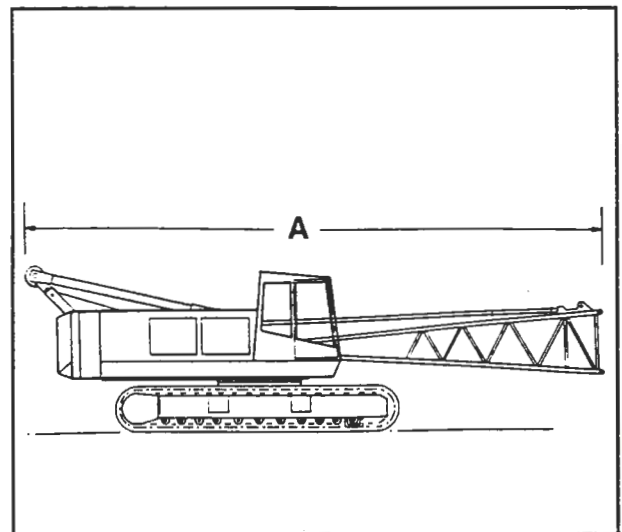
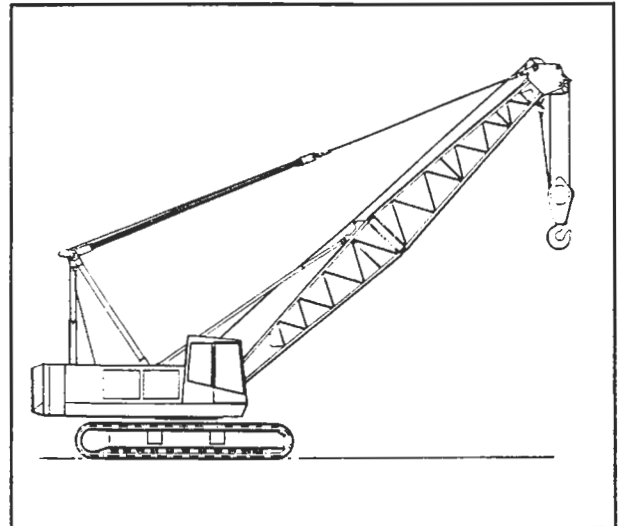
A Upper works
12924 kg 28492 lb

B Lower works
17704 kg 39030 lb

***C** Inner counterweight
4050 kg 8926 lb

***D** Outer counterweight
9600 kg 21164 lb

***Note:** The counterweight may vary slightly for stability requirements. Actual weight is stamped on the respective counterweights.



6.3.3

TRANSPORTATION

MACHINE WEIGHTS & DIMENSIONS

Front-end equipment (basic)

Lower boom

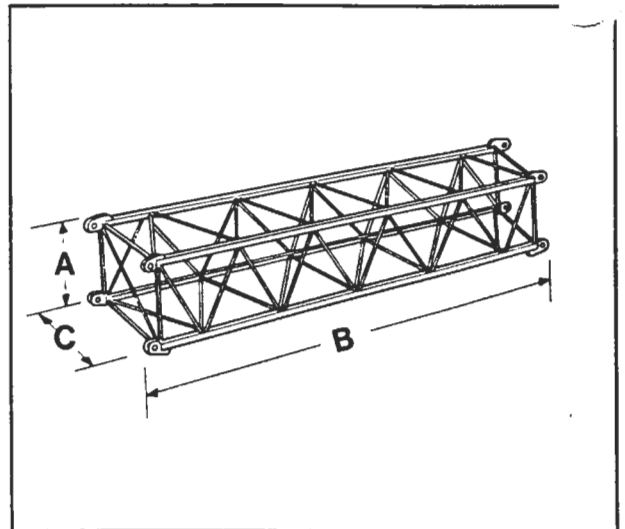
Weight		Dimensions (L x W x H)	
kg	lb	mm	in
715	1576	6160 x 1442 x 1591	243 x 57 x 63

Upper boom

Weight		Dimensions (L x W x H)	
kg	lb	mm	in
561	1236	6135 x 1442 x 1322	242 x 57 x 52

Front-end equipment (optional)

Boom Intersection



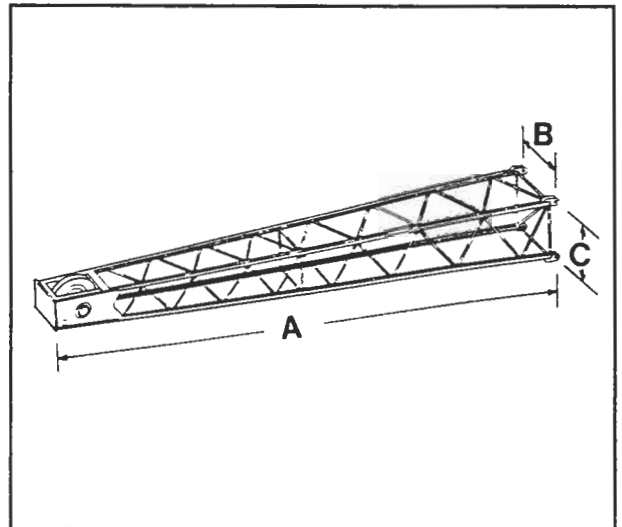
Intersection length	Weight		Dimensions					
	kg	lb	A		B		C	
			mm	in	mm	in	mm	in
3.00m extension	225	496	1321	52	3110	122	1444	57
6.00m extension	390	859	1321	52	6110	240	1444	57
9.00m extension	550	1212	1385	54	9110	359	1444	57

Front-end attachment (optional)

Offset jlb

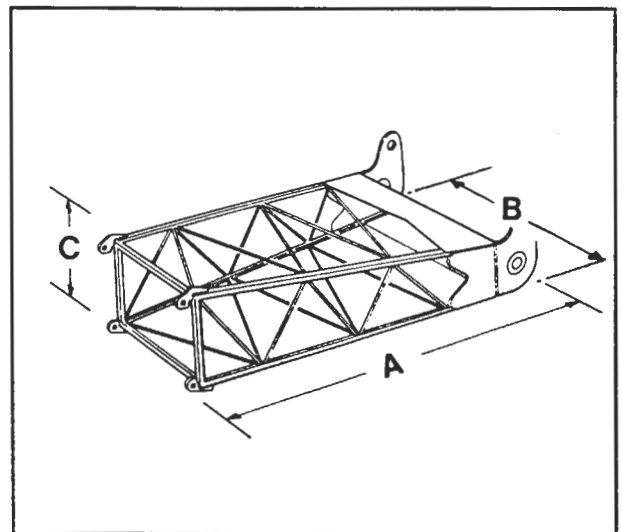
Top section, c/w sheave.

Weight		Dimensions					
		A		B		C	
kg	lb	mm	in	mm	in	mm	in
220	485	4902	193	660	26	610	24



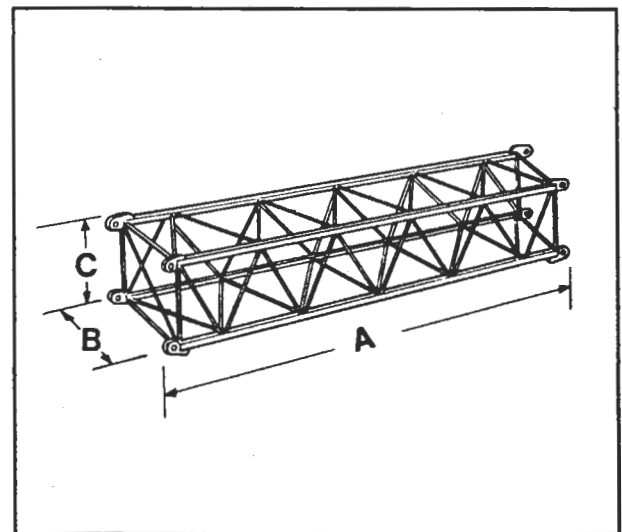
Bottom section.

Weight		Dimensions					
		A		B		C	
kg	lb	mm	in	mm	in	mm	in
89	196	1626	64	660	26	660	26



Intersection

Weight		Dimensions					
		A		B		C	
kg	lb	mm	in	mm	in	mm	in
155	342	6147	242	660	26	610	24



Offset jlb mast c/w sheaves (not illustrated)

Weight 128 kg 282 lb