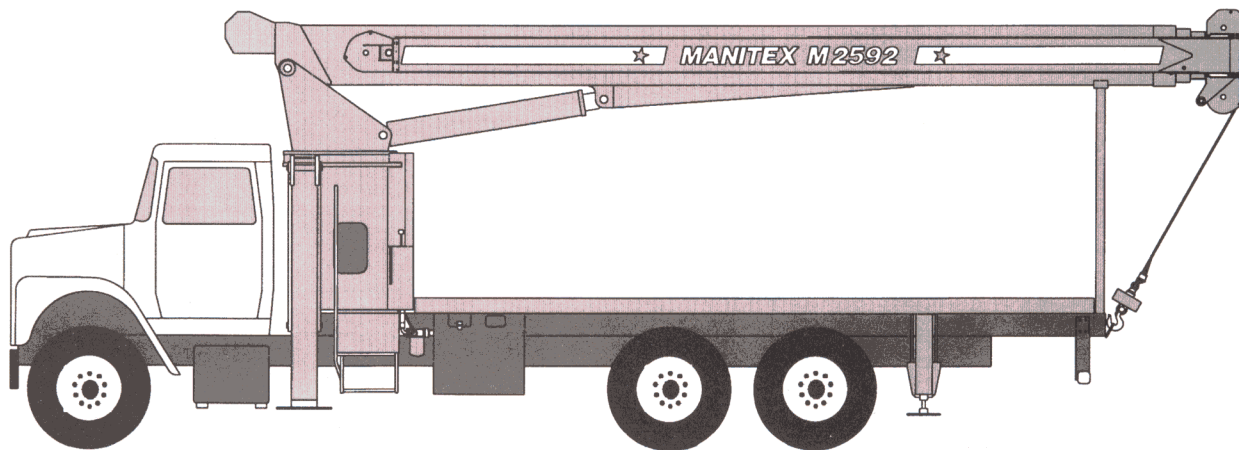




# Millennium Series™ M2500

## General Specifications



Model shown is M2592 with optional jib.

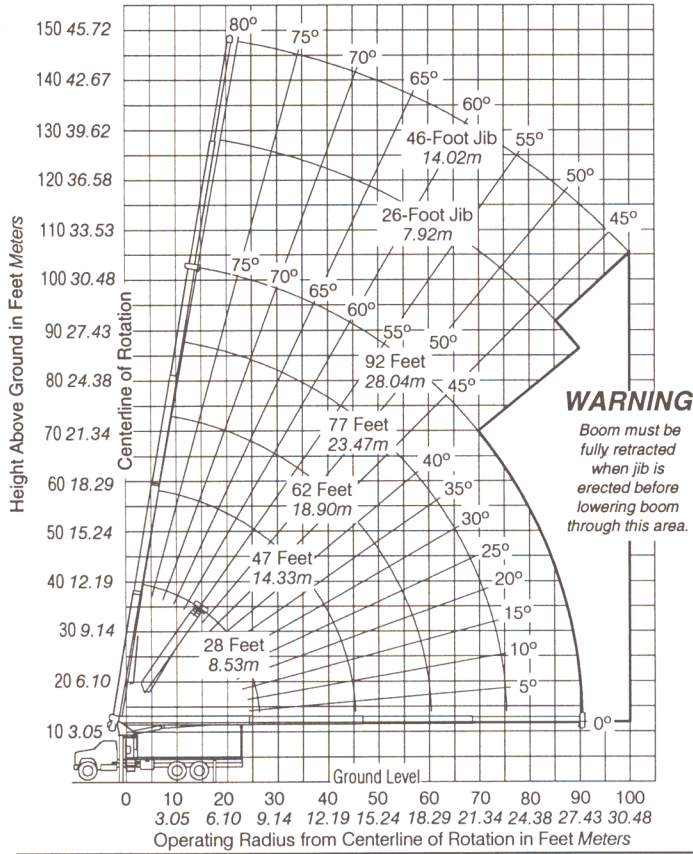
### STANDARD EQUIPMENT

- **M2592** — 4-Section telescopic boom  
28' to 92' (8.53m to 28.04m).
- **M2571** — 3-Section telescopic boom  
28' to 71' (8.53m to 21.64m).
- 2-Speed planetary hoist.
- 5-Ton (4.5-mt) hook and ball.
- 3-Sheave boom point.
- Anti-two-block shutoff.
- Boom hoist cylinder.
- System pressure gauge.
- 70-Gallon (265-liter) hydraulic reservoir.
- Removable boom rest.
- Finish paint in Manitex colors.
- Engine start/stop.
- Operator/service/parts manuals.
- 300' (91.44m) of  $\frac{9}{16}$ " (14.3mm) EIPS IWRC wire rope.
- 372° Non-continuous rotation.
- Pedestal, turret, rotation bearing and swing system.
- Dual operator control stations.
- Load moment indicator - audio/visual.
- Audible outrigger/stabilizer motion alarm.
- Out-and-down rear stabilizers.
- A-frame link type outriggers.
- 3-Section vane type hydraulic pump.
- 20' (6.10m) Subframe.
- Signal horn.

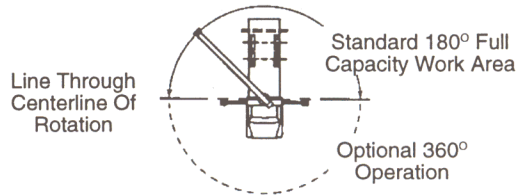


# MODEL M2592

## M2592 RANGE DIAGRAM



## AREA OF OPERATION



## ALLOWABLE LINE PULL

1 PART LINE	2 PART LINE	3 PART LINE	4 PART LINE	5 PART LINE	6 PART LINE	<b>WARNING</b> Anti-Two-Block system must be in good operating condition before operating crane. Refer to Owner's Manual. Keep at least 3 wraps of load line on drum at all times.
8500 lb 3856 kg	17000 lb 7711 kg	25500 lb 11567 kg	34000 lb 15422 kg	42500 lb 19278 kg	50000 lb 22680 kg	$\frac{3}{16}$ " (14.29mm) Rot resistant (5.0:1 SF), 37000 lb (16783 kg) Minimum breaking strength.

## WEIGHTS

Total crane, including hydraulic fluid.. .....20,300 lb .9,208 kg  
 26' (7.93m) Fixed length jib ..... 819 lb .... 372 kg  
 46' (14.02m) Telescopic jib..... 1,230 lb .... 558 kg  
 15-Ton (13.6-mt) single-sheave block.....263 lb .... 119 kg  
 25-Ton (22.7-mt) double-sheave block ..... 380 lb .... 172 kg  
 Hanger sheave for 5- and 6-part line..... 38 lb ..... 17 kg  
 20'4" (6.20m) Steel or wood bed ..... 1,900 lb .... 862 kg

## DEDUCTIONS

Hanger Sheave ..... 50 lb ..... 23 kg  
 Overhaul Ball..... 180 lb ..... 82 kg  
 Single Sheave Load Block ..... 260 lb ..... 118 kg  
 Double-Sheave Load Block..... 350 lb ..... 159 kg  
 Triple-Sheave Load Block ..... 380 lb ..... 172 kg

Hose Reel..... 140 lb ..... 64 kg  
 Swing-Around Jib ..... See Load Rating Chart

**WARNING** Lifting off the main boom point while the swing-around jib is erected is not intended or approved.

Outriggers and stabilizers fully extended and machine level.

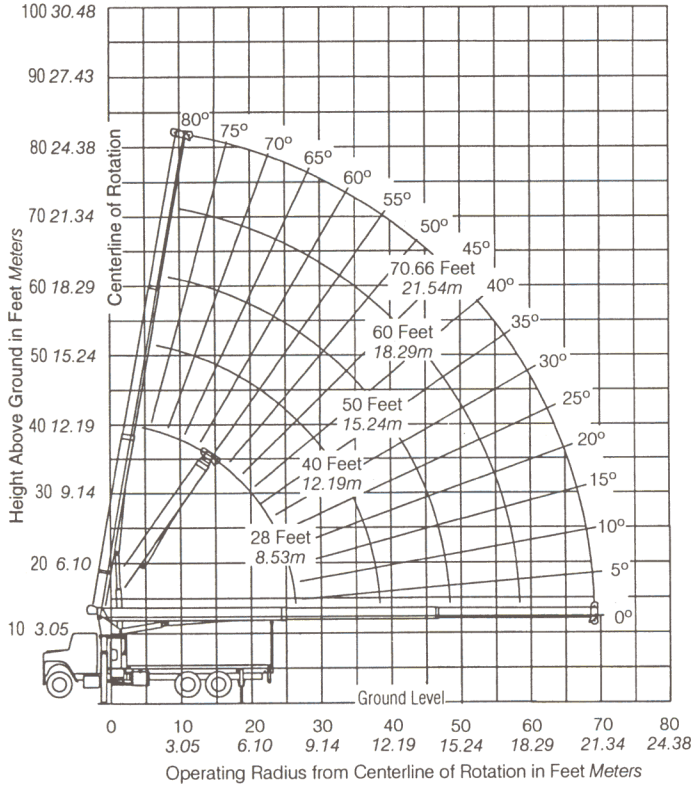
## M2592 LOAD RATING CHART

Meets ANSI B30.5 Requirements.

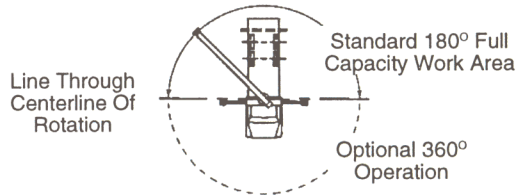
Operating Radius		BOOM LOAD RATINGS					JIB LOAD RATINGS																					
		28 Feet 8.53 Meters		47 Feet 14.33 Meters		62 Feet 18.90 Meters		77 Feet 23.47 Meters		92 Feet 28.04 Meters		26 Foot 7.92 Meters		26 Foot 7.92 Meters		46 Foot 14.02 Meters												
Feet	Meters	∠	lb	kg	∠	lb	kg	∠	lb	kg	∠	lb	kg	∠	lb	kg	∠	lb	kg									
5	1.52	79°	50,000	22,679							Fixed Jib		Telescopic Jib															
8	2.44	72°	37,800	17,145																								
10	3.05	68°	32,000	14,514	78°	20,500	9,298																					
12	3.66	63°	26,650	12,088	75°	20,500	9,298	79°	20,500	9,298																		
15	4.57	56°	20,900	9,480	71°	20,500	9,298	77°	18,300	8,300	80°	15,000	6,803															
20	6.10	42°	15,000	6,803	65°	15,000	6,803	72°	14,800	6,713	76°	12,700	5,760	79°	9,900	4,490												
25	7.62	21°	11,300	5,125	58°	11,300	5,125	67°	11,300	5,125	72°	10,900	4,944	76°	8,680	3,937	79°	5,500	2,494	79°	5,300	2,404						
30	9.14				50°	9,170	4,159	62°	9,170	4,159	68°	9,170	4,159	73°	7,740	3,510	77°	5,000	2,267	77°	4,850	2,199	79°	3,400	1,542			
35	10.67				41°	7,400	3,356	56°	7,400	3,356	64°	7,400	3,356	70°	6,760	3,066	75°	4,610	2,091	75°	4,350	1,973	77°	3,300	1,496			
40	12.19				30°	6,050	2,744	50°	6,050	2,744	60°	6,050	2,744	66°	5,920	2,685	72°	4,160	1,886	72°	3,900	1,769	76°	3,200	1,451			
45	13.72							43°	5,000	2,267	55°	5,000	2,267	63°	5,000	2,267	70°	3,750	1,700	70°	3,480	1,578	74°	3,040	1,378			
50	15.24							36°	4,190	1,900	50°	4,190	1,900	59°	4,190	1,900	67°	3,380	1,533	67°	3,110	1,410	72°	2,780	1,260			
55	16.76							26°	3,400	1,542	45°	3,400	1,542	55°	3,400	1,542	65°	3,070	1,392	65°	2,800	1,270	69°	2,520	1,143			
60	18.29										39°	2,830	1,283	51°	2,830	1,283	62°	2,790	1,265	62°	2,500	1,133	67°	2,280	1,034			
65	19.81										32°	2,310	1,047	46°	2,310	1,047	59°	2,480	1,124	59°	2,190	993	65°	2,070	938			
70	21.34										24°	1,880	852	42°	1,880	852	56°	2,040	925	56°	1,750	793	62°	1,880	852			
75	22.86													36°	1,550	703	53°	1,670	757	53°	1,380	625	60°	1,710	775			
80	24.38													30°	1,240	562	49°	1,350	612	49°	1,060	480	58°	1,520	689			
85	25.91																22°	970	439	46°	1,080	489	46°	780	353	55°	1,240	562
90	27.43																			42°	840	381	42°	540	244	52°	990	449
95	28.96																								49°	780	353	
100	30.48																									46°	580	263
		Do not operate crane or accessories within 10' (3.05m) of live power lines.																										
		460	209	270	123	210	95	170	77	140	64	<b>Deductions for stowed fixed jib</b>						<b>Deductions for stowed telescopic jib</b>										
7300035-001		690	313	410	186	310	141	250	113	210	95																	

# MODEL M2571

## M2571 RANGE DIAGRAM



## AREA OF OPERATION



### ALLOWABLE LINE PULL

1 PART LINE	2 PART LINE	3 PART LINE	4 PART LINE	5 PART LINE	6 PART LINE	<b>WARNING</b> Anti-Two-Block system must be in good operating condition before operating crane. Refer to Owner's Manual. Keep at least 3 wraps of load line on drum at all times.
8500 lb 3856 kg	17000 lb 7711 kg	25500 lb 11567 kg	34000 lb 15422 kg	42500 lb 19278 kg	50000 lb 22680 kg	
7400 lb 3357 kg	14800 lb 6713 kg	22200 lb 10070 kg	29600 lb 13426 kg	37000 lb 16783 kg	44400 lb 20140 kg	

## WEIGHTS

Total crane, including hydraulic fluid..... 18,850 lb.. 8,850 kg  
 15-Ton (13.6-mt) single-sheave block ..... 263 lb..... 119 kg  
 25-Ton (22.7-mt) double-sheave block ..... 380 lb..... 172 kg  
 Hanger sheave for 5- and 6-part line ..... 38 lb..... 17 kg  
 20'4" (6.20m) Steel or wood bed ..... 1,900 lb..... 862 kg

## DEDUCTIONS

Hanger Sheave .....	50 lb .....	23 kg	Double-Sheave Load Block .....	350 lb .....	159 kg
Overhaul Ball.....	120 lb .....	54 kg	Triple-Sheave Load Block .....	380 lb .....	172 kg
Single Sheave Load Block .....	260 lb .....	118 kg	Hose Reel.....	140 lb .....	64 kg

Outriggers and stabilizers fully extended and machine level.

## M2571 LOAD RATING CHART

Meets ANSI B30.5 Requirements.

### BOOM LOAD RATINGS

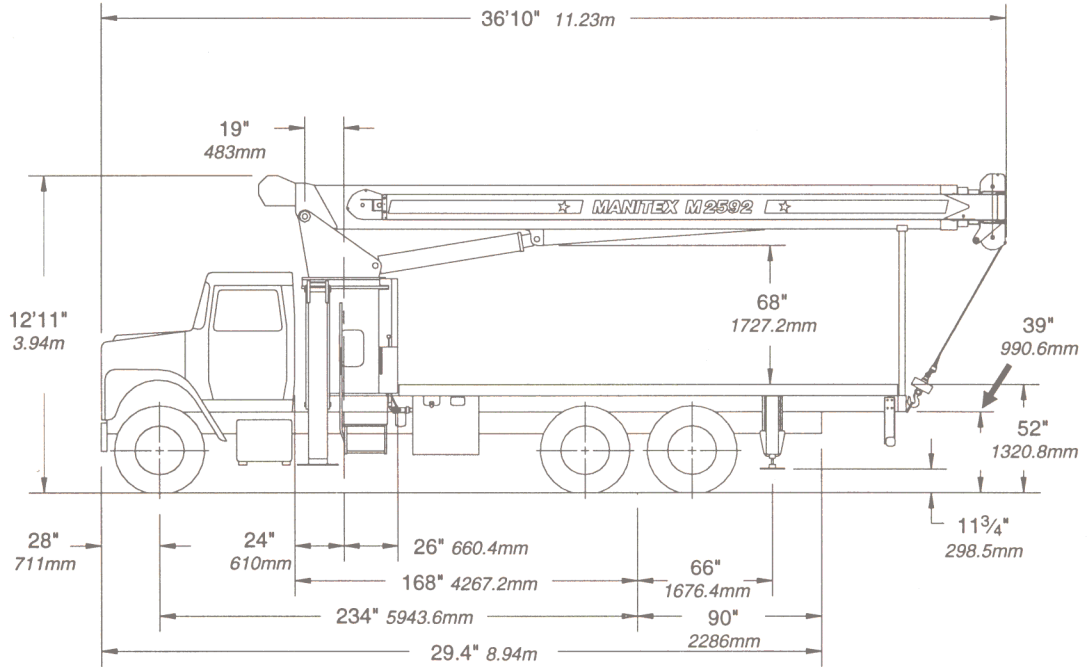
Operating Radius		28 Feet 8.53 Meters		40 Feet 12.19 Meters		50 Feet 15.24 Meters		60 Feet 18.29 Meters		70.66 Feet 51.54 Meters						
Feet	Meters	∠	lb	kg	∠	lb	kg	∠	lb	kg	∠	lb	kg			
5	1.52	79°	50,000	22,680												
8	2.44	72°	38,520	17,472	78°	35,600	16,148									
10	3.05	68°	32,660	14,814	75°	30,120	13,662	79°	28,390	12,877						
12	3.66	63°	27,430	12,442	72°	26,130	11,852	76°	24,660	11,186	79°	23,100	10,478			
15	4.57	56°	21,650	9,820	68°	21,650	9,820	73°	20,590	9,339	76°	19,350	8,777	79°	16,350	7,416
20	6.10	42°	15,700	7,121	59°	15,700	7,121	67°	15,700	7,121	71°	15,270	6,926	75°	13,630	6,182
25	7.62	21°	12,050	5,466	50°	12,050	5,466	60°	12,050	5,466	66°	12,050	5,466	70°	11,540	5,234
30	9.14				40°	9,750	4,423	53°	9,750	4,423	61°	9,750	4,423	66°	9,750	4,423
35	10.67				26°	7,970	3,615	45°	7,970	3,615	55°	7,970	3,615	61°	7,970	3,615
40	12.19							36°	6,700	3,039	48°	6,700	3,039	56°	6,700	3,039
45	13.72	This capacity chart is for reference use only and must not be used for a specific serial number crane.						23°	5,430	2,463	41°	5,430	2,463	51°	5,430	2,463
50	15.24										33°	4,480	2,032	46°	4,480	2,032
55	16.76										22°	3,700	1,678	39°	3,700	1,678
60	18.29	All load ratings above the heavy line are based on machine structural competence and do not exceed 85% of tipping. Load ratings below are stability limited and do not exceed 85% of tipping.											32°	3,120	1,415	
65	19.81												22°	2,610	1,184	

7300035-006

Do not operate crane or accessories within 10' (3.05m) of live power lines.



# M2500 OUTLINE DIMENSIONS



*These dimensions are general, not for Engineering. Some dimensions depend on truck selection. Dimensions shown on this page apply to both the M2592 and the M2571 models.*

## TRUCK CHASSIS DATA

### Minimum Requirements for M2500 Series

Some configurations and options may increase requirements.

Wheelbase.....	234 In.	5,944mm
Cab to Axle.....	168 In.	4,267mm
Front axle gross weight rating.....	14,000 lb	6,350 kg
Rear axle gross weight rating.....	38,000 lb	17,237 kg
Frame Section Modulus.....	20.0 in. <sup>3</sup>	328cc
	110,000 psi	758,450 kPa
Nominal Frame Width.....	34 In.	864mm

