

Link-Belt® LS-718 lifting crane capacities — heavy duty boom

PCSA Class 17-1493
Refer to Notes page 5.

Boom — tubular; 100" (2.54 m) wide, 85" (2.16 m) deep with open throat top section, retractable gantry, boom live mast, and dual 1½" (28 mm) diameter boom pendants.

Jib — tubular; 48" (1.22 m) wide, 39" (0.96 m) deep.

Counterweights — Refer to charts below.

Mounting — crawler: 17' 6" (5.33 m) extended gauge, 14' 8" (4.47 m) retracted gauge, 29' 11" (9.12 m) overall length.

GENERAL INFORMATION ONLY

Counterweights			
"A"		"AB"	
Pounds	kilograms	Pounds	kilograms
60,000	27 216	134,500	61 009

Maximum heavy duty boom or boom + jib machine can lift off^① ground unassisted — without load.

Standard machine equipped with boom live mast and appropriate counterweight	Side frames extended							
	Counterweight "A"				Counterweight "AB"			
	Boom		Boom + jib		Boom		Boom + jib	
	Feet	meters	Feet	meters	Feet	meters	Feet	meters
Over end	250	76.20	200 + 110	60.96 + 33.58	290	88.39	240 + 120	73.15 + 36.58
Over side	210	64.01	160 + 120	48.77 + 36.58	260	79.25	210 + 110	64.01 + 33.58

Maximum heavy duty boom or boom + jib machine can lift off ground^① unassisted and travel with, without load. Based on boom horizontal^② and minimum travel speed on firm, level supporting surface.

Standard machine equipped with boom live mast and appropriate counterweight	Side frames extended							
	Counterweight "A"				Counterweight "AB"			
	Boom		Boom + jib		Boom		Boom + jib	
	Feet	meters	Feet	meters	Feet	meters	Feet	meters
Over end	200	60.96	150 + 110	45.72 + 33.58	240	73.15	180 + 120	54.86 + 36.58
Over side	170	51.82	130 + 80	39.62 + 24.38	210	64.01	150 + 120	45.72 + 36.58

① Hook blocks on ground.

② Equipped with 250-ton (226.75 metric ton), 5,600 lbs. (2 540 kg) hook block and 50-ton (45.35 metric ton), 2,550 lbs. (1 157 kg) jib hook block — carried at boom and jib points.

LS-718 lifting crane capacities — heavy duty boom

Refer to Notes below.

Boom				Capacities — 360° swing			
Length	Radius		Angle Degrees	Boom point height		Crawler side frames extended	
	Feet	meters		Feet	m	Lbs.	kg
130' (39.62 m)	25	7.62	81.5	136' 8"	41.66	207.4	94.0
	30	9.14	79.2	135' 10"	41.40	154.6	70.1
	35	10.67	77.0	134' 9"	41.08	122.4	55.5
	40	12.19	74.7	133' 6"	40.69	100.5	45.5
	50	15.24	70.3	130' 4"	39.73	73.2	33.2
	60	18.29	65.3	126' 3"	38.48	58.4	25.5
	70	21.34	60.4	121' 1"	36.92	45.2	20.5
	80	24.38	55.2	114' 10"	34.99	37.4	16.9
	90	27.43	49.6	107' 1"	32.65	31.3	14.1
	100	30.48	43.5	97' 8"	29.76	26.5	12.0
	110	33.53	36.7	85' 9"	26.14	22.7	10.2
	120	36.58	28.5	70' 1"	21.37	19.5	8.8
140' (42.67 m)	27	8.23	81.3	146' 6"	44.65	182.3	82.6
	30	9.14	80.0	146' 0"	44.50	154.3	69.9
	35	10.67	77.9	145' 0"	44.20	122.1	55.3
	40	12.19	75.8	143' 10"	43.84	100.2	45.4
	50	15.24	71.6	140' 11"	42.95	72.9	33.0
	60	18.29	67.2	137' 2"	41.81	56.1	25.4
	70	21.34	62.7	132' 6"	40.38	45.1	20.4
	80	24.38	58.0	126' 9"	38.65	37.1	16.8
	90	27.43	53.0	119' 11"	36.55	31.0	14.0
	100	30.48	47.7	111' 7"	34.02	26.2	11.8
	110	33.53	41.9	101' 7"	30.95	22.4	10.1
	120	36.58	35.3	89' 0"	27.13	19.2	8.7
150' (45.72 m)	130	39.62	27.4	72' 7"	22.13	16.6	7.5
	140	42.67	16.5	47' 10"	14.57	14.3	6.4
	28	8.53	81.5	156' 5"	47.68	172.0	78.0
	30	9.14	80.7	156' 2"	47.59	154.1	69.8
	35	10.67	78.8	155' 3"	47.31	121.8	55.2
	40	12.19	76.8	154' 2"	46.98	99.9	45.3
	50	15.24	72.8	151' 5"	46.15	72.5	32.8
	60	18.29	68.8	147' 11"	45.09	55.7	25.2
	70	21.34	64.6	143' 8"	43.78	44.8	20.3
	80	24.38	60.3	138' 5"	42.19	36.7	16.6
	90	27.43	55.8	132' 2"	40.30	30.6	13.8
	100	30.48	51.1	124' 9"	38.04	25.9	11.7
160' (48.77 m)	110	33.53	46.0	115' 11"	35.34	22.0	9.9
	120	36.58	40.4	105' 4"	32.08	18.9	8.5
	130	39.62	34.1	92' 2"	28.08	16.2	7.3
	140	42.67	26.5	75' 0"	22.86	14.0	6.3
	150	45.72	15.9	49' 3"	15.01	12.0	5.4
	30	9.14	81.3	166' 3"	50.67	153.8	69.7
	35	10.67	79.5	165' 5"	50.42	121.5	55.1
	40	12.19	77.6	164' 5"	50.11	99.6	45.1
	50	15.24	73.9	161' 10"	49.33	72.2	32.7
	60	18.29	70.2	158' 7"	48.35	55.4	25.1
	70	21.34	66.3	154' 8"	47.13	44.4	20.1
	80	24.38	62.4	149' 10"	45.67	36.3	16.4
90	27.43	58.2	144' 1"	43.93	30.2	13.6	
100	30.48	53.9	137' 5"	41.88	25.5	11.5	
110	33.53	49.3	129' 6"	39.46	21.7	9.8	
120	36.58	44.4	120' 1"	36.61	18.5	8.3	

(continued)

Ⓢ — see page 5.

Boom				Capacities — 360° swing				
Length	Radius		Angle Degrees	Boom point height		Crawler side frames extended		
	Feet	meters		Feet	m	Lbs.	kg	
70' (21.34 m)	17	5.18	80.8	77' 2"	23.53	432.6	196.2	
	18	5.49	79.9	77' 0"	23.48	381.6	173.0	
	19	5.79	79.1	76' 10"	23.42	341.2	154.7	
	20	6.10	78.3	76' 8"	23.36	308.4	139.8	
	25	7.62	74.0	75' 5"	22.98	207.0	93.8	
	30	9.14	69.7	73' 9"	22.48	154.6	70.1	
	35	10.67	65.3	71' 8"	21.85	122.7	55.6	
	40	12.19	60.7	69' 2"	21.08	101.0	45.8	
	50	15.24	50.8	62' 4"	19.00	73.8	33.4	
	60	18.29	39.2	52' 4"	15.95	57.1	25.9	
	70	21.34	23.4	35' 11"	10.94	45.8	20.7	
	90' (27.43 m)	20	6.10	81.5	97' 0"	29.55	309.4	140.3
25		7.62	78.3	96' 0"	29.27	207.6	94.1	
30		9.14	75.0	94' 9"	28.89	155.0	70.3	
35		10.67	71.7	93' 3"	28.41	123.0	55.7	
40		12.19	68.3	91' 4"	27.84	101.3	45.9	
50		15.24	61.2	86' 6"	26.36	74.0	33.5	
60		18.29	53.6	79' 11"	24.36	57.3	25.9	
70		21.34	45.1	71' 1"	21.68	46.1	20.9	
80		24.38	35.1	59' 0"	17.97	38.1	17.2	
90		27.43	21.2	39' 9"	12.12	31.9	14.4	
100' (30.48 m)		21	6.40	81.2	106' 11"	32.59	282.1	127.9
		25	7.62	78.9	106' 3"	32.38	207.7	94.2
	30	9.14	76.0	105' 1"	32.04	155.0	70.3	
	35	10.67	73.0	103' 9"	31.62	122.9	55.7	
	40	12.19	70.0	102' 1"	31.11	101.2	45.9	
	50	15.24	63.7	97' 9"	29.80	73.9	33.5	
	60	18.29	57.1	92' 1"	28.07	57.2	25.9	
	70	21.34	50.0	84' 9"	25.83	46.0	20.8	
	80	24.38	42.1	75' 1"	22.89	38.1	17.2	
	90	27.43	32.6	62' 0"	18.89	31.9	14.4	
	100	30.48	19.5	41' 6"	12.66	27.0	12.2	
	110' (33.53 m)	23	7.01	81.0	116' 9"	35.58	239.4	108.5
25		7.62	79.9	116' 5"	35.48	209.4	94.1	
30		9.14	77.3	115' 5"	35.17	154.9	70.2	
35		10.67	74.6	114' 2"	34.79	122.8	55.7	
40		12.19	71.9	112' 8"	34.33	101.0	45.8	
50		15.24	66.3	108' 10"	33.16	73.7	33.4	
60		18.29	60.5	103' 10"	31.84	57.0	25.8	
70		21.34	54.3	97' 5"	29.68	45.8	20.7	
80		24.38	47.5	89' 3"	27.21	37.9	17.1	
90		27.43	40.0	78' 10"	24.03	31.8	14.4	
100		30.48	31.0	64' 10"	19.76	27.0	12.2	
110		33.53	18.6	43' 2"	13.17	23.0	10.4	
120' (36.58 m)	24	7.32	81.3	126' 8"	38.62	222.5	100.9	
	25	7.62	80.8	126' 7"	38.57	207.6	94.1	
	30	9.14	78.3	125' 7"	38.29	154.8	70.2	
	35	10.67	75.9	124' 6"	37.94	122.6	55.6	
	40	12.19	73.4	123' 1"	37.52	100.8	45.7	
	50	15.24	68.4	119' 8"	36.47	73.4	33.2	
	60	18.29	63.1	115' 2"	35.09	56.7	25.7	
	70	21.34	57.6	109' 5"	33.36	45.5	20.6	
	80	24.38	51.8	102' 4"	31.20	37.7	17.1	
	90	27.43	45.4	93' 7"	28.51	31.6	14.3	
	100	30.48	38.2	82' 5"	25.11	26.8	12.1	
	110	33.53	29.7	67' 6"	20.58	22.9	10.3	
120	36.58	17.8	44' 10"	13.66	19.7	8.9		

LS-718 lifting crane capacities — heavy duty boom

Refer to Notes page 5.

Length	Boom					Capacities — 360° swing			
	Radius Feet	Radius meters	Angle Degrees	Boom point height		Crawler side frames extended		Counterweight	
				Fl.	m	Lbs.	kg	Lbs.	kg
200' (60.96 m)	35	10.67	81.6	205' 11"	62.77	120.2	54.5	177.6	80.5
	40	12.19	80.1	205' 2"	61.53	98.1	44.4	106.1	48.3
	50	15.24	77.2	203' 2"	61.53	70.7	32.0	146.1	66.2
	60	18.29	74.3	200' 7"	61.14	53.8	24.4	83.1	37.6
	70	21.34	71.3	197' 6"	60.20	42.9	19.4	66.9	30.3
	80	24.38	68.2	193' 10"	59.07	34.8	15.7	55.3	25.0
	90	27.43	65.1	189' 6"	57.76	28.6	12.9	46.6	21.1
	100	30.48	61.9	184' 6"	56.24	23.9	10.8	40.2	18.2
	110	33.53	58.6	178' 9"	54.49	20.0	9.0	34.8	15.7
	120	36.58	55.2	172' 3"	52.50	16.9	7.6	30.3	13.7
	130	39.62	51.6	164' 10"	50.24	14.3	6.4	26.6	12.0
	140	42.67	47.8	156' 4"	47.65	12.1	5.4	23.4	10.6
150	45.72	43.8	146' 8"	44.69	10.1	4.5	20.7	9.3	
160	48.77	39.5	135' 5"	41.27	8.5	3.8	18.3	8.3	
170	51.82	34.8	122' 3"	37.25	7.0	3.1	16.3	7.3	
180	54.86	29.4	106' 3"	32.39	5.7	2.5	14.4	6.5	
190	57.91	22.9	85' 11"	26.18	4.6	2.0	12.8	5.8	
200	60.96	13.8	55' 9"	16.98	3.5	1.5	11.3	5.1	
210' (64.01 m)	36	10.97	81.7	215' 11"	65.87	114.8	52.0	170.0	77.1
	40	12.19	80.6	215' 3"	65.62	97.7	44.3	145.7	66.0
	50	15.24	77.8	213' 5"	65.04	70.3	31.8	106.3	48.2
	60	18.29	75.0	211' 0"	64.30	53.4	24.2	82.7	37.5
	70	21.34	72.2	208' 0"	63.41	42.5	19.2	66.5	30.1
	80	24.38	69.3	204' 6"	62.34	34.3	15.5	54.9	24.9
	90	27.43	66.3	200' 6"	61.10	28.2	12.7	46.2	20.9
	100	30.48	63.2	195' 9"	59.67	23.4	10.6	39.8	18.0
	110	33.53	60.3	190' 5"	58.03	19.6	8.8	34.4	15.6
	120	36.58	57.0	184' 4"	56.18	16.5	7.4	29.9	13.5
	130	39.62	53.7	177' 5"	54.07	13.8	6.2	26.1	11.8
	140	42.67	50.3	169' 7"	51.69	11.6	5.2	23.0	10.4
150	45.72	46.6	160' 9"	48.99	9.7	4.3	20.3	9.2	
160	48.77	42.7	150' 7"	45.90	8.1	3.6	17.9	8.1	
170	51.82	38.5	138' 11"	42.35	6.6	2.9	15.8	7.1	
180	54.86	33.9	125' 4"	38.19	5.3	2.4	14.0	6.3	
190	57.91	28.7	108' 10"	33.18	4.2	1.9	12.4	5.6	
200	60.96	22.3	87' 11"	26.79	3.1	1.4	10.9	4.9	
210	64.01	13.4	56' 11"	17.34	1.9	0.9	9.6	4.3	
220' (67.06 m)	38	11.58	81.6	225' 9"	68.80	105.3	47.7	156.6	71.0
	40	12.19	81.0	225' 5"	68.71	97.3	44.1	145.3	65.9
	50	15.24	78.4	223' 7"	68.15	69.9	31.7	105.9	48.0
	60	18.29	75.7	221' 4"	67.45	52.9	23.9	82.2	37.2
	70	21.34	73.0	218' 6"	66.60	42.1	19.0	66.1	29.9
	80	24.38	70.3	215' 2"	65.59	33.9	15.3	54.5	24.7
	90	27.43	67.5	211' 4"	64.41	27.8	12.6	45.7	20.7
	100	30.48	64.6	206' 11"	63.06	23.0	10.4	38.4	17.8
	110	33.53	61.7	201' 10"	61.52	19.2	8.7	33.9	15.3
	120	36.58	58.7	196' 1"	59.77	16.0	7.2	29.4	13.3
	130	39.62	55.6	189' 8"	57.81	13.4	6.0	25.7	11.6
	140	42.67	52.4	182' 5"	55.59	11.2	5.0	22.5	10.2
150	45.72	49.0	174' 2"	53.10	9.3	4.2	19.8	8.9	
160	48.77	45.5	165' 0"	50.28	7.6	3.4	17.5	7.9	
170	51.82	41.7	154' 6"	47.08	6.2	2.8	15.4	6.9	
180	54.86	37.6	142' 5"	43.40	4.9	2.2	13.6	6.1	
190	57.91	33.1	128' 4"	39.11	3.7	1.6	11.9	5.3	
200	60.96	28.0	111' 5"	33.95	2.8	1.2	10.5	4.7	
210	64.01	21.8	89' 10"	27.38	1.9	0.9	9.2	4.1	
220	67.06	13.1	58' 1"	17.70	1.1	0.6	8.0	3.6	

(continued)

Ⓢ — see page 5.

Length	Boom					Capacities — 360° swing				
	Radius Feet	Radius meters	Angle Degrees	Boom point height		Crawler side frames extended		Counterweight		
				Fl.	m	Lbs.	kg	Lbs.	kg	
160' (48.77 m)	130	39.62	39.1	108' 11"	33.19	15.9	7.2	28.2	12.7	
	140	42.67	33.0	95' 2"	29.00	13.7	6.2	25.0	11.3	
	150	45.72	25.6	77' 4"	23.57	11.7	5.3	22.3	10.1	
	160	48.77	15.4	50' 7"	15.43	10.0	4.5	19.9	9.0	
	170' (51.82 m)	31	9.45	81.5	176' 3"	53.71	145.8	66.1	213.9	97.0
		35	10.67	80.1	175' 7"	53.51	121.2	54.9	178.7	81.0
		40	12.19	78.4	174' 7"	53.22	99.2	44.9	147.3	66.8
		50	15.24	74.9	172' 3"	52.50	71.8	32.5	108.0	48.9
		60	18.29	71.4	169' 3"	51.58	55.0	24.9	84.3	38.2
		70	21.34	67.8	165' 6"	50.44	44.1	20.0	68.2	30.9
		80	24.38	64.1	161' 0"	49.08	36.0	16.3	56.6	25.6
		90	27.43	60.3	155' 9"	47.47	29.9	13.5	47.9	21.7
100		30.48	56.3	149' 7"	45.59	25.1	11.3	41.5	18.8	
110		33.53	52.2	142' 5"	43.40	21.3	9.6	36.0	16.3	
120		36.58	47.8	134' 0"	40.84	18.1	8.2	31.6	14.3	
130		39.62	43.0	124' 2"	37.83	15.5	7.0	27.8	12.6	
140	42.67	37.8	112' 5"	34.26	13.3	6.0	24.7	11.2		
150	45.72	31.9	98' 1"	29.89	11.4	5.1	21.9	9.9		
160	48.77	24.9	79' 7"	24.25	9.7	4.3	19.5	8.8		
170	51.82	14.9	51' 11"	15.83	8.2	3.7	17.4	7.8		
180' (54.86 m)	32	9.75	81.6	186' 2"	56.75	138.4	62.7	203.5	92.3	
	35	10.67	80.6	185' 8"	56.60	120.9	54.8	178.4	80.9	
	40	12.19	79.0	184' 10"	56.33	98.9	44.8	146.9	66.6	
	50	15.24	75.8	182' 7"	55.65	71.4	32.3	107.6	48.8	
	60	18.29	72.5	179' 9"	54.78	54.6	24.7	83.9	38.0	
	70	21.34	69.1	176' 3"	53.72	43.7	19.8	67.8	30.7	
	80	24.38	65.6	172' 1"	52.45	35.6	16.1	56.2	25.4	
	90	27.43	62.1	167' 2"	50.95	29.5	13.3	47.5	21.5	
	100	30.48	58.4	161' 5"	49.21	24.7	11.2	41.1	18.6	
	110	33.53	54.6	154' 10"	47.19	20.9	9.4	35.6	16.1	
	120	36.58	50.6	147' 2"	44.86	17.7	8.0	31.2	14.1	
	130	39.62	46.3	138' 4"	42.17	15.1	6.8	27.4	12.4	
140	42.67	41.8	128' 0"	39.02	12.9	5.8	24.3	11.0		
150	45.72	36.7	115' 9"	35.29	11.0	4.9	21.5	9.7		
160	48.77	31.0	100' 10"	30.75	9.3	4.2	19.2	8.7		
170	51.82	24.1	81' 9"	24.91	7.8	3.5	17.1	7.7		
180	54.86	14.5	53' 3"	16.23	6.5	2.9	15.2	6.8		
190' (57.91 m)	34	10.36	81.4	196' 0"	59.74	126.0	57.1	185.4	84.0	
	35	10.67	81.1	195' 10"	59.69	120.6	54.7	178.0	80.7	
	40	12.19	79.6	195' 0"	59.43	98.5	44.6	146.5	66.4	
	50	15.24	76.5	192' 11"	58.79	71.1	32.2	107.2	48.6	
	60	18.29	73.4	190' 2"	57.97	54.2	24.5	83.5	37.8	
	70	21.34	70.2	186' 11"	56.97	43.3	19.6	67.4	30.5	
	80	24.38	67.0	183' 0"	55.78	35.2	15.9	55.8	25.3	
	90	27.43	63.7	178' 5"	54.38	29.1	13.1	47.1	21.3	
	100	30.48	60.3	173' 1"	52.75	24.3	11.0	40.7	18.4	
	110	33.53	56.7	166' 11"	50.89	20.5	9.2	35.2	15.9	
	120	36.58	53.0	159' 11"	48.74	17.3	7.8	30.7	13.9	
	130	39.62	49.2	151' 10"	46.28	14.7	6.6	27.0	12.2	
140	42.67	45.0	142' 7"	43.45	12.5	5.6	23.8	10.7		
150	45.72	40.6	131' 9"	40.16	10.6	4.8	21.1	9.5		
160	48.77	35.7	119' 0"	36.28	8.9	4.0	18.8	8.5		
170	51.82	30.2	103' 7"	31.58	7.4	3.3	16.7	7.5		
180	54.86	23.5	83' 10"	25.56	6.1	2.7	14.8	6.7		
190	57.91	14.1	54' 6"	16.67	5.0	2.2	13.2	5.9		

LS-718 lifting crane capacities — heavy duty boom

Refer to Notes page 5.

Boom				Capacities [ⓐ] — 360° swing			
Length	Radius		Angle Degrees	Boom point height [ⓑ] m	Crawler side frames extended		Counterweight "AB" kg
	Feet	meters			Counterweight "A" Lbs.	Counterweight "B" kg	
250' (76.20 m)	170	51.82	48.9	196' 7"	4.8	21	63
	180	54.86	45.8	187' 4"			55
	190	57.91	42.5	177' 1"			48
	200	60.96	39.0	165' 6"			41
	210	64.01	35.2	152' 3"			35
	220	67.06	31.0	136' 11"			29
	230	70.10	26.2	118' 7"			25
	240	73.15	20.4	95' 5"			20
	250	76.20	12.3	61' 5"			16
		43	13.11	81.8	265' 5"		
260' (79.25 m)	45	13.72	81.3	265' 1"			55.5
	50	15.24	80.2	264' 4"			47.2
	60	18.29	78.0	262' 5"			36.5
	70	21.34	75.7	260' 0"			29.1
	80	24.38	73.4	257' 3"			23.8
	90	27.43	71.1	254' 1"			20.1
	100	30.48	68.7	250' 5"			17.0
	110	33.53	66.4	246' 3"			14.5
	120	36.58	63.9	241' 8"			12.5
	130	39.62	61.5	236' 6"			10.8
270' (82.30 m)	140	42.67	58.9	230' 9"			9.3
	150	45.72	56.3	224' 5"			8.1
	160	48.77	53.6	217' 5"			7.0
	170	51.82	50.8	209' 8"			6.1
	180	54.86	47.9	201' 1"			5.3
	190	57.91	44.9	191' 7"			4.5
	200	60.96	41.7	180' 11"			3.9
	210	64.01	38.2	169' 0"			3.3
	220	67.06	34.5	155' 5"			2.8
	230	70.10	30.4	139' 8"			2.3
280' (85.34 m)	240	73.15	25.7	120' 11"			1.8
	45	13.72	81.6	275' 3"			54.8
	50	15.24	80.6	274' 5"			47.0
	60	18.29	78.4	272' 7"			36.3
	70	21.34	76.2	270' 4"			28.9
	80	24.38	74.0	267' 8"			23.6
	90	27.43	71.8	264' 7"			19.9
	100	30.48	69.6	261' 1"			16.8
	110	33.53	67.3	257' 2"			14.3
	120	36.58	65.0	252' 9"			12.3
290' (88.30 m)	130	39.62	62.6	247' 10"			10.6
	140	42.67	60.2	242' 4"			9.1
	150	45.72	57.7	236' 4"			7.9
	160	48.77	55.2	229' 8"			6.8
	170	51.82	52.5	222' 5"			5.9
	180	54.86	49.8	214' 4"			5.1
	190	57.91	47.0	205' 6"			4.3
	200	60.96	44.0	195' 8"			3.7
	210	64.01	40.8	184' 8"			3.1
	220	67.06	37.5	172' 5"			2.5
300' (91.42 m)	230	70.10	33.8	158' 6"			2.0
	46	14.02	81.7	285' 2"			86.93
	50	15.24	80.9	284' 7"			86.74
	60	18.29	78.8	282' 10"			86.20
	70	21.34	76.7	280' 8"			85.54
	80	24.38	74.6	278' 1"			84.76

(continued)

ⓐ — see page 5.

Boom				Capacities [ⓐ] — 360° swing			
Length	Radius		Angle Degrees	Boom point height [ⓑ] m	Crawler side frames extended		Counterweight "AB" kg
	Feet	meters			Counterweight "A" Lbs.	Counterweight "B" kg	
230' (70.10 m)	39	11.89	81.7	235' 8"	100.8	45.7	68.1
	40	12.19	81.4	235' 6"	96.9	43.9	65.7
	50	15.24	78.9	233' 10"	69.5	31.5	47.8
	60	18.29	76.4	231' 7"	52.5	23.8	37.1
	70	21.34	73.8	228' 11"	41.6	18.8	29.7
	80	24.38	71.2	225' 9"	33.5	15.1	24.4
	90	27.43	68.5	222' 1"	27.3	12.3	20.5
	100	30.48	65.8	217' 11"	22.6	10.2	17.6
	110	33.53	63.0	213' 1"	18.7	8.4	15.1
	120	36.58	60.2	207' 9"	15.6	7.0	13.1
	130	39.62	57.3	201' 8"	12.9	5.8	11.4
	140	42.67	54.3	194' 10"	10.7	4.8	10.0
	150	45.72	51.2	187' 3"	8.8	3.9	8.7
	160	48.77	47.9	178' 8"	7.2	3.2	7.7
	170	51.82	44.4	169' 1"	5.7	2.5	6.7
	180	54.86	40.7	158' 3"	4.4	1.9	5.9
	190	57.91	36.8	145' 9"	3.3	1.4	5.2
	200	60.96	32.4	131' 3"	2.4	1.0	4.5
	210	64.01	27.4	113' 10"	1.7	0.7	3.9
	220	67.06	21.3	91' 9"	1.1	0.5	3.4
230	70.10	12.8	59' 2"	0.6	0.4	2.9	
240' (73.15 m)	41	12.50	81.6	245' 6"	92.9	42.1	63.1
	45	13.72	80.6	244' 10"	82.3	37.3	56.2
	50	15.24	79.4	244' 0"	74.37	33.6	47.6
	60	18.29	76.9	241' 11"	52.1	23.6	36.9
	70	21.34	74.5	239' 4"	41.2	18.6	29.5
	80	24.38	72.0	236' 4"	33.0	14.9	24.2
	90	27.43	69.4	232' 10"	26.9	12.2	20.3
	100	30.48	66.9	228' 10"	22.1	10.0	17.4
	110	33.53	64.3	224' 3"	18.3	8.3	15.4
	120	36.58	61.6	219' 2"	15.1	6.8	12.9
	130	39.62	58.8	213' 5"	12.5	5.6	11.2
	140	42.67	56.0	207' 0"	10.3	4.6	9.7
	150	45.72	53.1	199' 11"	8.4	3.8	8.5
	160	48.77	50.0	192' 0"	6.7	3.0	7.5
	170	51.82	46.8	183' 1"	5.5	2.3	6.5
	180	54.86	43.4	173' 2"	4.2	1.8	5.7
	190	57.91	39.9	161' 11"	3.2	1.4	4.9
	200	60.96	36.0	149' 1"	2.5	1.1	4.3
	210	64.01	31.7	134' 1"	1.8	0.8	3.7
	220	67.06	26.8	116' 3"	1.1	0.5	3.2
230	70.10	20.9	93' 7"	0.7	0.4	2.7	
240	73.15	12.6	60' 4"	0.4	0.3	2.2	
250' (76.20 m)	42	12.80	81.7	255' 5"	89.7	40.6	61.0
	45	13.72	80.8	255' 0"	81.8	37.1	55.9
	50	15.24	79.0	254' 2"	77.72	34.6	47.4
	60	18.29	77.5	252' 2"	68.6	31.1	40.6
	70	21.34	75.1	248' 8"	51.6	23.4	30.6
	80	24.38	72.7	245' 10"	38.6	18.5	24.0
	90	27.43	70.3	243' 6"	32.6	14.7	20.3
	100	30.48	67.9	239' 8"	26.5	12.0	17.2
	110	33.53	65.4	235' 4"	21.7	9.8	14.7
	120	36.58	62.8	230' 6"	17.8	8.0	12.7
260' (79.25 m)	130	39.62	60.2	225' 0"	14.7	6.6	11.0
	140	42.67	57.5	219' 0"	12.0	5.4	9.6
	150	45.72	54.8	212' 3"	9.8	4.4	8.3
	160	48.77	52.1	204' 10"	7.9	3.5	7.3

LS-718 lifting crane capacities — heavy duty boom

Refer to Notes below.

Boom				Capacities ^② — 360° swing			
Length	Radius		Angle Degrees	Boom point height ^①		Crawler side frames extended	
	Feet	meters		Fl.	m	Counterweight "A"	Counterweight "AB"
	50	15.24	81.2	294' 8"	89.83	93.8'	42.5*
	60	18.29	79.2	293' 0"	89.30	79.2	35.9
	70	21.34	77.2	290' 11"	88.66	62.9	28.5
	80	24.38	75.2	288' 5"	87.91	51.2	23.2
	90	27.43	73.1	285' 7"	87.05	43.1	19.5
	100	30.48	71.0	282' 4"	86.06	36.2	16.4
	110	33.53	68.9	278' 9"	84.95	30.7	13.9
	120	36.58	66.8	274' 8"	83.71	26.2	11.8
	130	39.62	64.6	270' 2"	82.34	22.5	10.2
290' (88.39 m)	140	42.67	62.4	265' 2"	80.82	Not applicable	8.7
	150	45.72	60.2	259' 8"	79.15	16.6	7.5
	160	48.77	57.9	253' 8"	77.32	14.2	6.4
	170	51.82	55.5	247' 1"	75.32	12.1	5.4
	180	54.86	53.1	239' 11"	73.13	10.3	4.6
	190	57.91	50.6	232' 1"	70.73	8.7	3.9
	200	60.96	47.9	223' 5"	68.10	7.2	3.2
	210	64.01	45.2	214' 0"	65.22	5.9	2.6
	220	67.06	42.4	203' 6"	62.04	4.7	2.1

Boom				Capacities ^② — 360° swing			
Length	Radius		Angle Degrees	Boom point height ^①		Crawler side frames extended	
	Feet	meters		Fl.	m	Counterweight "A"	Counterweight "AB"
	90	27.43	72.5	275' 1"	83.86	43.5	19.7
	100	30.48	70.3	271' 9"	82.83	36.7	16.6
	110	33.53	68.1	268' 0"	81.68	31.2	14.1
	120	36.58	65.9	263' 9"	80.38	26.7	12.1
	130	39.62	63.7	259' 0"	78.95	22.9	10.3
	140	42.67	61.3	253' 10"	77.36	19.8	8.9
	150	45.72	59.0	248' 1"	75.62	17.0	7.7
	160	48.77	56.6	241' 9"	73.69	14.7	6.6
	170	51.82	54.1	234' 10"	71.59	12.6	5.7
	180	54.86	51.5	227' 3"	69.27	10.8	4.8
	190	57.91	48.8	218' 11"	66.73	9.2	4.1
	200	60.96	46.1	209' 9"	63.93	7.7	3.4
	210	64.01	43.2	199' 8"	60.85	6.4	2.9
	220	67.06	40.1	188' 4"	57.41	5.2	2.3
	230	70.10	36.8	175' 9"	53.57	4.1	1.8

① Measured vertically from center of boom head sheave to ground.
② Capacities shown in thousands of pounds and thousands of kilograms.

Notes — lifting crane capacities

- Capacities included in this chart are the maximum allowable, and are based on machine standing level on firm supporting surface under ideal job conditions.
- Capacities are not more than 75% of minimum tipping loads unless marked with an asterisk.
 - Asterisk (*) indicates capacities based on factors other than those which would cause a tipping condition.
- Capacities are based on freely suspended loads and make no allowance for such factors as the effect of wind, sudden stopping of loads, supporting surface conditions, and operating speeds. Operator must reduce load ratings to take such conditions into account. Deduction from rated capacities must be made for weight of jib, hook block, weighted ball/hook, sling, spreader bar, or other suspended gear.
- Refer to operator's manual for instructions pertaining to raising or lowering of attachment.
- Retractable gantry in raised position, and 40' (12.19 m) high boom live mast in operating position, must be used for all capacities on this chart.
- Least stable rated condition is over the side.
- Main boom length must not exceed 290' (88.39 m). Maximum jib length permitted — 120' (36.58 m); maximum boom + jib combination length permitted — 240' (73.15 m) boom plus 120' (36.58 m) jib.
- For lifting 500,000# (226 800 kg), 12-part load hoist line (1 1/4" — 32 mm, Type "N" wire rope) is required. Check parts of line required for all capacities.
- Determining lifting crane capacities with jib mounted on boom:
 - When handling load off main boom head sheaves, the following reductions in rated lifting crane capacities must be made to compensate for jib weight —
 - 50' (15.24 m) jib — 4,870# (2 209 kg)
 - 70' (21.34 m) jib — 6,410# (2 908 kg)
 - 80' (24.38 m) jib — 7,170# (3 252 kg)
 - 90' (27.43 m) jib — 7,950# (3 606 kg)
 - 100' (30.48 m) jib — 8,720# (3 955 kg)
 - 110' (33.53 m) jib — 9,440# (4 305 kg)
 - 120' (36.58 m) jib — 10,250# (4 649 kg)
- These capacities apply only to the machine as originally manufactured and normally equipped by FMC Corporation, Cable Crane and Excavator Division.

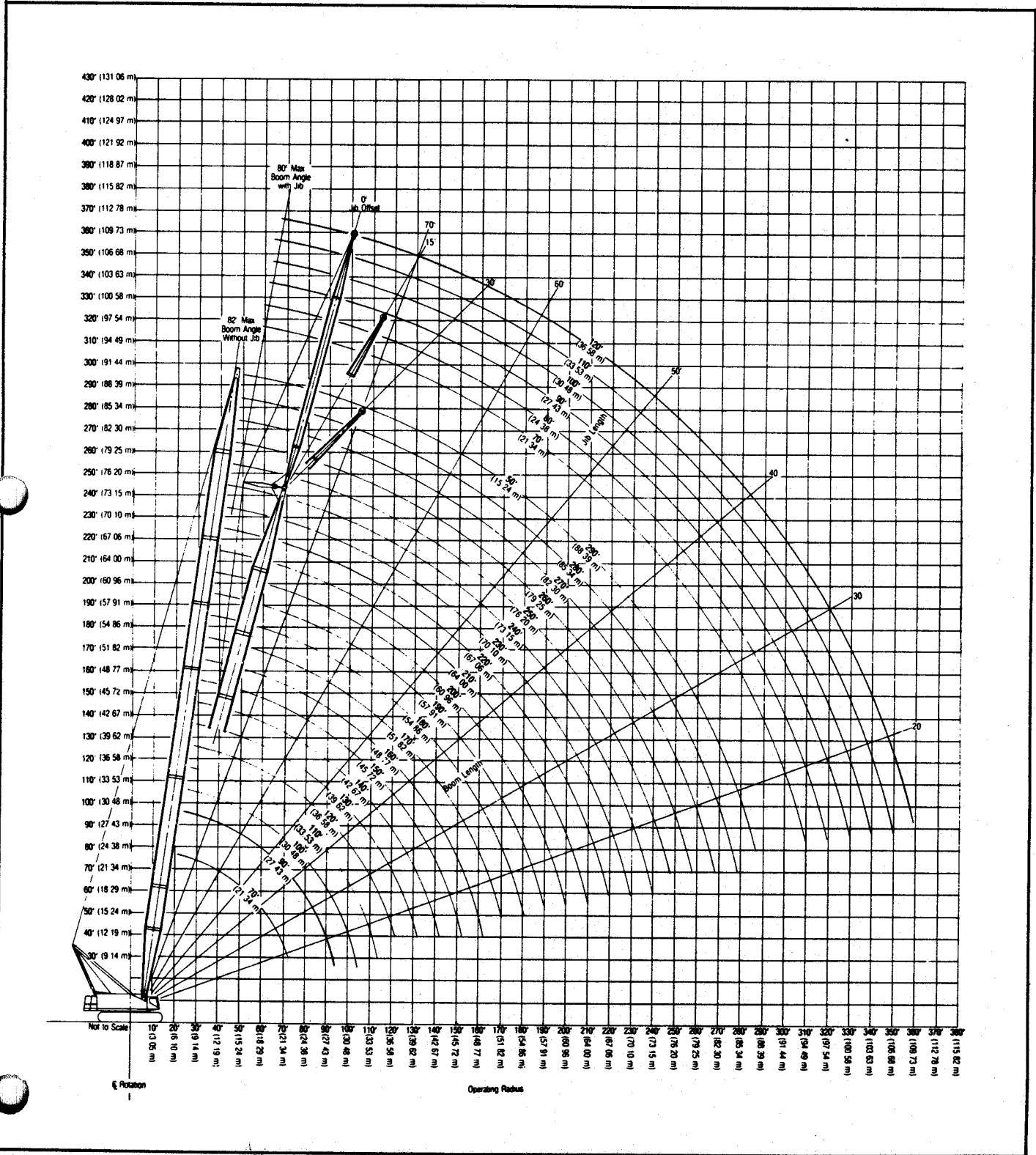
LS-718 boom/jib working ranges — heavy duty boom

Boom — tubular; 100" (2.54 m) wide, 85" (2.16 m) deep with open throat top section, retractable high gantry, boom live mast, and dual 1 1/8" (28.58 mm) diameter boom pendants.

Jib — tubular; 48" (1.22 m) wide, 39" (0.96 m) deep.

Counterweight — 134,500 lbs. (61 009 kg) "AB" only.

Mounting — crawler: 17' 6" (5.33 m) extended gauge, 14' 8" (4.47 m) retracted gauge, 29' 11" (9.12 m) overall length.



LS-718 dragline/clamshell/magnet capacities — heavy duty boom

Refer to Notes page 8.

Boom — tubular; 100" (2.54 m) wide, 85" (2.16 m) deep with open throat top section, retractable gantry, boom live mast, and dual 1½" (28 mm) diameter boom pendants.

Mounting — crawler: 17' 6" (5.33 m) extended gauge, 14' 8" (4.47 m) retracted gauge, 29' 11" (9.12 m) overall length.

Counterweight — 60,000 lbs. (27 216 kg) "A" only.

Length	Boom					Counterweight "A" only			
	Radius		Angle	Boom point height ¹		Dragline		Clamshell/magnet	
	Feet	meters	Degree	Feet	meters	Pounds	kilograms	Pounds	kilograms
70' (21.34 m)	17	5.18	81.6	77' 2"	23.53	—	—	31,500	14 288
	18	5.49	80.7	77' 0"	23.48	—	—	↑	↑
	19	5.79	77.9	76' 10"	23.42	—	—	↑	↑
	20	6.10	79.1	76' 8"	23.36	—	—	↑	↑
	25	7.62	74.9	75' 5"	22.98	—	—	↑	↑
	30	9.14	70.6	73' 9"	22.48	—	—	↑	↑
	35	10.67	66.1	71' 8"	21.85	—	—	↑	↑
	40	12.19	61.5	69' 2"	21.08	—	—	↑	↑
	50	15.24	51.6	62' 4"	19.00	27,000	12 247	↓	↓
	60	18.29	40.0	52' 4"	15.95	27,000	12 247	↓	↓
70	21.34	24.2	35' 11"	10.94	27,000	12 247	31,500	14 288	
90' (27.43 m)	20	6.10	81.5	97' 0"	29.55	—	—	31,500	14 288
	25	7.62	78.3	96' 0"	29.27	—	—	↑	↑
	30	9.14	75.0	94' 9"	28.89	—	—	↑	↑
	35	10.67	71.7	93' 3"	28.41	—	—	↑	↑
	40	12.19	68.3	91' 4"	27.84	—	—	↑	↑
	50	15.24	61.2	86' 6"	26.36	—	—	↑	↑
	60	18.29	53.6	79' 11"	24.36	27,000	12 247	↓	↓
	70	21.34	45.1	71' 1"	21.68	27,000	12 247	↓	↓
	80	24.38	35.1	59' 0"	17.97	27,000	12 247	31,500	14 288
	90	27.43	21.2	39' 9"	12.12	27,000	12 247	28,700	13 018
100' (30.48 m)	21	6.40	81.9	106' 11"	32.58	—	—	31,500	14 288
	25	7.62	79.5	106' 3"	32.38	—	—	↑	↑
	30	9.14	76.5	105' 1"	32.04	—	—	↑	↑
	35	10.67	73.6	103' 9"	31.62	—	—	↑	↑
	40	12.19	70.5	102' 1"	31.11	—	—	↑	↑
	50	15.24	64.3	97' 9"	29.80	—	—	↑	↑
	60	18.29	57.7	92' 1"	28.07	27,000	12 247	↓	↓
	70	21.34	50.6	84' 9"	25.83	27,000	12 247	↓	↓
	80	24.38	42.6	75' 1"	22.89	27,000	12 247	31,500	14 288
	90	27.43	33.2	62' 0"	18.89	27,000	12 247	28,700	13 018
100	30.48	20.1	41' 6"	12.66	27,000	12 247	24,300	11 022	
110' (33.53 m)	23	7.01	81.5	116' 8"	35.57	—	—	31,500	14 288
	25	7.62	80.4	116' 5"	35.48	—	—	↑	↑
	30	9.14	77.8	115' 5"	35.17	—	—	↑	↑
	35	10.67	75.1	114' 2"	34.79	—	—	↑	↑
	40	12.19	72.4	112' 8"	34.33	—	—	↑	↑
	50	15.24	66.8	108' 10"	33.16	—	—	↑	↑
	60	18.29	61.0	103' 10"	31.64	—	—	↑	↑
	70	21.34	54.8	97' 5"	29.68	27,000	12 247	↓	↓
	80	24.38	48.1	89' 3"	27.21	27,000	12 247	31,500	14 288
	90	27.43	40.5	78' 10"	24.03	27,000	12 247	28,600	12 973
100	30.48	31.6	64' 10"	19.76	27,000	12 247	24,300	11 022	
110	33.53	19.1	43' 2"	13.17	23,000	10 433	20,700	9 390	
120' (36.58 m)	24	7.32	81.7	126' 8"	38.62	—	—	31,500	14 288
	25	7.62	81.2	126' 7"	38.57	—	—	↑	↑
	30	9.14	78.8	125' 7"	38.29	—	—	↑	↑
	35	10.67	76.4	124' 6"	37.94	—	—	↑	↑
	40	12.19	73.9	123' 1"	37.52	—	—	↑	↑
	50	15.24	68.8	119' 8"	36.47	—	—	↑	↑
	60	18.29	63.6	115' 2"	35.09	—	—	↑	↑
	70	21.34	58.1	109' 5"	33.36	27,000	12 247	↓	↓
	80	24.38	52.3	102' 4"	31.20	27,000	12 247	31,500	14 288
	90	27.43	45.9	93' 7"	28.51	27,000	12 247	28,400	12 882
100	30.48	38.7	82' 5"	25.11	26,800	12 156	24,100	10 932	
110	33.53	30.2	67' 6"	20.58	22,900	10 387	20,600	9 344	
120	36.58	18.3	44' 10"	13.66	19,700	8 936	17,700	8 029	
130' (39.62 m)	25	8.23	81.9	146' 8"	44.65	—	—	31,500	14 288
	30	9.14	79.7	135' 10"	41.40	—	—	↑	↑
	35	10.67	77.4	134' 9"	41.08	—	—	↑	↑
	40	12.19	75.2	133' 6"	40.69	—	—	↑	↑
	50	15.24	70.5	130' 4"	39.73	—	—	↑	↑
	60	18.29	65.8	126' 3"	38.48	—	—	↑	↑
	70	21.34	60.8	121' 1"	36.92	—	—	↑	↑
	80	24.38	55.6	114' 10"	34.99	27,000	12 247	31,500	14 288
	90	27.43	50.0	107' 1"	32.65	27,000	12 247	28,100	12 746
	100	30.48	44.0	97' 8"	29.78	26,500	12 020	23,900	10 841
110	33.53	37.1	85' 9"	26.14	22,700	10 297	20,400	9 253	
120	36.58	28.9	70' 1"	21.37	19,500	8 845	17,500	7 938	
130	39.62	17.6	46' 4"	14.12	16,800	7 620	15,100	6 849	

¹ Measured vertically from center of boom head sheave to ground.

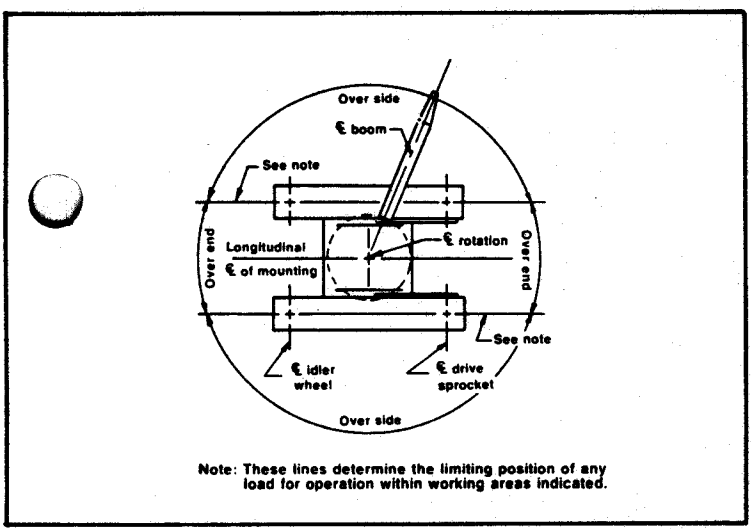
LS-718 dragline/clamshell/magnet capacities — heavy duty boom

Refer to Notes below.

Notes — dragline/clamshell/magnet capacities

1. Capacities included in this chart are the maximum allowable, and are based on machine standing level on firm supporting surface under ideal job conditions.
2. Capacities do not exceed 75% of minimum tipping loads for dragline; 67½% for clamshell/magnet.
3. A deduction from rated capacities must be made for weight of hook block, hook, sling, bucket, grapple, magnet or other suspended gear.
4. Maximum boom length permitted for dragline/clamshell/magnet operation is 130' (39.62 m).
5. Minimum boom angle for dragline operation is 35 degrees.
6. Dragline/clamshell/magnet capacities are maximum recommended by P.C.S.A. Standard #1. User must make allowance for rapid cycle operations, bucket suction, or other unfavorable conditions which may require smaller buckets or magnet.
7. Refer also to Notes — lifting crane capacities.

LS-718 working areas



We constantly improving our products and therefore reserve the right to change designs and specifications.
• Link-Belt is a registered trademark.



Link-Belt Construction Equipment Company Lexington, Kentucky

Link-Belt® LS-718 tower crane capacities — tower plus boom only

Refer to Notes page 5.

Tower — tubular; 100" (2.54 m) wide, 85" (2.16 m) deep, with retractable gantry, tower live mast, dual 1½" (28 mm) diameter tower pendants and dual 1½" (28 mm) diameter balance arm pendants.

Crawler — 17' 6" (5.33 m) extended gauge, 29' 11" (9.12 m) overall length.

Counterweight — 134,500# (61 009 kg) "AB" only.

Boom — tubular; 100" (2.54 m) wide, 85" (2.16 m) deep, with open throat top section, boom live mast dual 1½" (28 m) diameter pendants.

GENERAL INFORMATION ONLY

CAUTION: This material is for reference only. Operator must refer to in-cab capacity plate to determine allowable machine lifting capacities and operating procedures.

Boom						Based on 30 m.p.h. (48.27 km/hr.) wind speed							
Length	Radius		Angle	160' (48.77 m) tower boom [Ⓜ] point height		Capacities [Ⓛ] with side frames extended — 360° swing							
	Feet	meters				Tower heights							
					140' (42.67 m) to 160' (48.77 m)	170' (51.82 m) to 190' (57.91 m)	200' (60.96 m) to 220' (67.06 m)	230' (70.10 m) to 250' (76.20 m)					
			Degree	Feet	meters	Lbs.	kgs	Lbs.	kgs	Lbs.	kgs	Lbs.	kgs
80' (24.38 m)	35	10.67	75.1	245' 2"	74.74	100.0*	45 4*	98.0*	44 5*	86.8*	39 4*	69.3*	31 4*
	40	12.19	71.4	243' 8"	74.28	97.5*	44 2*	97.0*	44 0*	84.9*	38 5*	68.4*	31 0*
	45	13.72	67.7	241' 8"	73.67	93.8*	42 5*	93.8*	42 5*	83.1*	37 7*	66.9*	30 3*
	50	15.24	63.9	239' 5"	72.97	91.7*	41 6*	91.7*	41 6*	81.3*	36 9*	65.5*	29 7*
	55	16.76	59.8	236' 7"	72.12	87.9*	39 9*	87.9*	39 9*	79.5*	36 1*	64.1*	29 1*
	60	18.29	55.8	233' 5"	71.14	87.4*	39 6*	87.4*	39 6*	77.2*	35 0*	62.7*	28 4*
	65	19.81	51.4	229' 6"	69.95	83.1	37 7	83.5	37 9	74.3*	33 7*	61.4*	27 9*
	70	21.34	46.9	224' 11"	68.55	75.8	34 4	76.1	34 5	72.2*	32 7*	59.8*	27 1*
	75	22.83	41.9	219' 7"	66.93	69.6	31 6	69.9	31 7	69.5*	31 5*	57.7*	26 2*
	80	24.38	36.4	212' 11"	64.89	64.7	29 3	65.0	29 5	65.2	29 6	56.2*	25 5*
90	27.43	21.6	192' 4"	58.61	56.0	25 4	56.3	25 5	56.5	25 6	52.9*	24 0*	
100' (30.48 m)	35	10.67	78.1	265' 10"	81.02	85.2*	38 6*	81.1*	36 8*	74.6*	33 8*	60.7*	27 5*
	40	12.19	75.2	264' 7"	80.65	84.2*	38 2*	80.0*	36 3*	72.7*	33 0*	58.5*	26 5*
	45	13.72	72.2	263' 1"	80.19	82.2*	37 3*	78.3*	35 5*	71.9*	32 6*	57.8*	26 2*
	50	15.24	69.3	261' 4"	79.64	80.6*	36 6*	76.6*	34 7*	70.9*	32 2*	57.1*	25 9*
	55	16.76	66.2	259' 2"	74.00	78.9*	35 8*	76.2*	34 6*	69.4*	31 5*	55.9*	25 4*
	60	18.29	63.1	256' 8"	78.24	77.2*	35 0*	75.5*	34 2*	67.9*	30 8*	55.2*	25 0*
	65	19.81	60.0	253' 11"	7.39	75.5*	34 2*	75.1*	34 1*	66.5*	30 2*	53.8*	24 4*
	70	21.34	56.7	250' 10"	76.44	74.9	34 0	74.4*	33 7*	64.8*	29 4*	52.7*	23 9*
	75	22.83	53.3	247' 1"	75.31	68.8	31 2	69.0	31 3	62.4*	28 3*	51.4*	23 3*
	80	24.38	49.7	243' 0"	74.07	63.9	29 0	64.2	29 1	60.1*	27 3*	50.0*	22 7*
	90	27.43	41.9	232' 10"	70.96	55.3	25 1	55.5	25 2	55.7	25 3	46.6*	21 1*
100	30.48	32.5	218' 8"	66.66	48.5	22 0	48.7	22 1	48.8	22 1	42.7*	19 4*	
110	33.53	19.3	195' 2"	59.50	43.1	19 6	43.3	19 6	43.4	19 7	40.2*	18 2*	
110' (33.53 m)	35	10.67	79.1	276' 0"	84.12	79.3*	36 0*	74.9*	34 0*	68.2*	30 9*	55.0*	24 9*
	40	12.19	76.5	274' 10"	83.76	77.6*	35 2*	73.9*	33 5*	67.5*	30 6*	54.4*	24 7*
	45	13.72	73.9	273' 7"	83.39	75.9*	34 4*	72.0*	32 7*	66.6*	30 2*	53.8*	24 4*
	50	15.24	71.2	271' 11"	82.88	74.3*	33 7*	70.5*	32 0*	65.8*	29 8*	53.2*	24 1*
	55	16.76	68.5	270' 1"	82.33	73.3*	33 2*	69.8*	31 7*	64.9*	29 4*	52.1*	23 6*
	60	18.29	65.7	267' 11"	81.66	72.4*	32 8*	69.0*	31 3*	63.5*	28 8*	51.5*	23 4*
	65	19.81	62.9	265' 5"	80.90	70.8*	32 1*	68.3*	31 0*	62.2*	28 2*	50.4*	22 9*
	70	21.35	60.0	262' 7"	80.04	70.1*	31 8*	67.9*	30 8*	60.9*	27 6*	49.4*	22 4*
	75	22.83	57.0	259' 5"	79.07	68.3	31 0	67.5*	30 6*	59.0*	26 8*	48.4*	22 0*
	80	24.38	53.9	255' 11"	78.00	63.5	28 8	63.8	28 9	56.8*	25 8*	46.8*	21 2*
	90	27.43	47.3	247' 5"	75.41	54.8	24 9	55.1	25 0	53.5*	24 3*	42.6*	19 3*
	100	30.48	39.9	236' 5"	72.05	48.1	21 8	48.3	21 9	48.4	22 0	40.2*	18 2*
	110	33.53	30.9	221' 5"	67.48	42.7	19 4	42.9	19 5	43.0	19 5	37.5*	17 0*
120	36.58	18.4	196' 7"	59.92	38.3	17 4	38.5	17 5	38.6	17 5	34.3*	15 6*	
120' (36.58 m)	37	11.27	79.2	285' 9"	87.09	73.0*	33 1*	68.5*	31 1*	62.8*	28 5*	50.6*	23 0*
	40	12.19	77.6	285' 2"	86.93	72.3*	32 8*	68.0*	30 8*	62.2*	28 2*	50.4*	22 9*
	45	13.72	75.2	283' 11"	86.53	70.3*	31 9*	66.6*	30 2*	61.9*	28 1*	50.0*	22 7*
	50	15.24	72.8	282' 6"	86.11	68.8*	31 2*	65.2*	29 6*	60.8*	27 6*	49.5*	22 5*
	55	16.76	70.3	280' 10"	86.20	67.3*	30 5*	63.8*	28 9*	60.0*	27 2*	48.9*	22 2*
	60	18.29	67.8	278' 10"	84.98	66.5*	30 2*	63.1*	28 6*	58.7*	26 6*	47.9*	21 7*
	65	19.81	65.3	276' 7"	84.30	65.6*	29 8*	62.4*	28 3*	58.2*	26 4*	47.4*	21 5*
	70	21.34	62.7	274' 1"	83.55	65.0*	29 5*	61.8*	28 0*	57.2*	25 9*	46.4*	21 0*
	75	22.83	60.0	271' 4"	82.70	64.6*	29 3*	61.5*	27 9*	55.5*	25 2*	45.5*	20 6*
	80	24.38	57.3	268' 2"	81.75	63.0	28 6	61.2*	27 8*	53.9*	24 4*	42.4*	19 2*
	90	27.43	51.1	260' 8"	79.46	54.4	24 7	54.6	24 8	50.2*	22 8*	40.2*	18 2*
	100	30.48	45.3	251' 6"	76.66	47.7	21 6	47.9	21 7	46.6*	21 1*	37.9*	17 2*
	110	33.53	38.2	239' 10"	73.09	42.3	19 2	42.4	19 2	40.5*	18 4*	35.4*	16 1*
	120	36.58	29.5	223' 11"	68.24	37.9	17 2	38.0	17 2	36.5*	16 6*	31.8*	14 4*
130	39.62	17.5	197' 11"	60.32	34.2	15 5	34.4	15 6	32.9*	14 9*	28.7*	13 0*	
130' (39.62 m)	39	11.88	79.2	295' 7"	90.09	67.0*	30 4*	62.5*	28 4*	—	—	—	—
	40	12.19	78.6	295' 5"	90.04	66.7*	30 3*	62.2*	28 2*	57.2*	25 9*	46.4*	21 0*
	45	13.72	76.4	294' 4"	89.70	65.0*	29 5*	61.4*	27 9*	56.9*	25 8*	46.2*	20 9*
	50	15.24	74.1	292' 11"	89.28	63.4*	28 6*	59.9*	27 2*	55.9*	25 4*	46.0*	20 8*
	55	16.76	71.9	291' 5"	88.82	62.1*	28 2*	58.6*	26 6*	54.7*	24 8*	45.5*	20 6*
	60	18.29	69.6	289' 7"	88.27	60.8*	27 6*	57.9*	26 3*	54.0*	24 5*	43.2*	19 6*

Ⓛ Capacities shown in thousands of pounds and kilograms.

Ⓜ Measured vertically from center of boom head sheave to ground.

(continued)

LS-718 tower crane capacities — tower plus boom only

Boom						Based on 30 m.p.h. (48.27 km/hr.) wind speed							
Length	Radius		Angle	160' (48.77 m) tower boom point height		Capacities [ⓐ] with side frames extended — 360° swing							
	Feet	meters				Tower heights							
	Feet	meters	Degree	Feet	meters	140' (42.67 m) to 160' (48.77 m)		170' (51.82 m) to 190' (57.91 m)		200' (60.96 m) to 220' (67.06 m)		230' (70.10 m) to 250' (76.20 m)	
						Lbs.	kgs	Lbs.	kgs	Lbs.	kgs	Lbs.	kgs
130' (39.62 m)	65	19.81	67.3	287' 6"	87.62	60.1*	27.3*	57.2*	25.9*	53.3*	24.2*	42.8*	19.4*
	70	21.34	64.9	285' 4"	86.96	59.4*	26.9*	56.5*	25.6*	52.6*	23.9*	42.3*	19.1*
	75	22.83	62.5	282' 8"	86.15	58.9*	26.7*	56.0*	25.4*	52.0*	23.6*	41.1*	18.6*
	80	24.38	60.0	279' 11"	85.31	58.6*	26.6*	55.7*	25.3*	50.7*	23.0*	40.0*	18.1*
	90	27.43	54.9	273' 5"	83.33	54.0	24.5	55.4*	25.1*	47.3*	21.5*	37.7*	17.1*
	100	30.48	49.4	265' 5"	80.89	47.2	21.4	47.4	21.5	43.1*	19.6*	35.6*	16.1*
	110	33.53	43.2	255' 6"	77.88	41.9	19.0	42.0	19.1	38.2*	17.3*	32.2*	15.0*
	120	36.58	36.6	243' 0"	74.07	37.5	17.0	37.6	17.1	34.2*	15.5*	29.7*	13.4*
130	39.62	29.3	229' 4"	68.98	33.8	15.3	33.9*	15.4*	30.3*	13.7*	26.6*	12.0*	
140	42.67	16.8	199' 1"	60.69	31.1	14.1	30.6*	13.9*	27.4*	12.4*	24.0*	10.8*	
140' (42.67 m)	42	12.80	78.7	305' 2"	92.97	60.7*	27.5*	56.8*	25.7*	—	—	—	—
	45	13.72	77.3	304' 7"	92.84	60.1*	27.2*	56.3*	25.5*	52.4*	23.7*	41.6*	18.8*
	50	15.24	75.3	303' 4"	92.45	58.5*	26.5*	55.1*	24.9*	51.3*	23.2*	41.4*	18.7*
	55	16.76	73.2	301' 11"	92.02	57.3*	25.9*	54.0*	24.4*	50.2*	22.7*	41.1*	18.6*
	60	18.29	71.1	300' 2"	91.50	56.1*	25.4*	52.9*	23.9*	49.6*	22.4*	40.7*	18.4*
	65	19.81	68.9	298' 4"	90.93	54.9*	24.9*	52.3*	23.7*	48.6*	22.0*	40.2*	18.2*
	70	21.34	66.8	296' 4"	90.31	54.4*	24.6*	51.7*	23.4*	48.0*	21.7*	39.5*	17.9*
	75	22.83	64.6	293' 11"	89.58	53.8*	24.4*	51.1*	23.1*	47.4*	21.5*	38.6*	17.5*
	80	24.38	62.3	291' 5"	88.82	53.3*	24.1*	50.6*	22.9*	46.9*	21.2*	37.5*	17.0*
	90	27.43	57.7	285' 6"	87.02	53.0*	24.0*	50.4*	22.8*	43.4*	19.6*	35.4*	16.0*
	100	30.48	52.8	278' 5"	84.47	46.8	21.2	47.0	21.3*	40.5*	18.3*	33.0*	14.9*
	110	33.53	47.5	269' 10"	82.24	41.4	18.7	41.1*	18.6*	35.9*	16.2*	31.1*	14.1*
	120	36.58	41.8	259' 4"	79.03	37.0	16.7	36.2*	16.4*	31.8*	14.4*	27.6*	12.5*
	130	39.62	35.1	246' 1"	75.01	34.5*	15.6*	31.9*	14.4*	28.2*	12.7*	24.5*	11.1*
140	42.67	27.2	228' 7"	69.68	30.4*	13.7*	28.1*	12.7*	25.0*	11.3*	21.8*	9.8*	
150	45.72	16.2	200' 4"	61.05	26.8*	12.1*	24.9*	11.2*	22.2*	10.0*	19.6*	8.8*	
150' (45.72 m)	46	14.02	77.9	314' 7"	95.88	55.0*	24.9*	51.5*	23.3*	—	—	—	—
	50	15.24	76.3	313' 8"	95.62	53.8*	24.4*	50.5*	22.9*	47.3*	21.4*	38.5*	17.4*
	55	16.76	74.3	312' 4"	95.19	52.5*	23.8*	49.5*	22.4*	46.2*	20.9*	38.3*	17.3*
	60	18.29	72.4	310' 10"	94.73	51.4*	23.3*	48.5*	21.9*	45.3*	20.5*	38.0*	17.2*
	65	19.81	70.4	309' 0"	94.18	50.3*	22.8*	47.9*	21.7*	43.0*	19.5*	37.6*	17.0*
	70	21.34	68.4	307' 2"	93.63	49.8*	22.5*	46.9*	21.2*	42.1*	19.0*	37.0*	16.7*
	75	22.83	66.3	305' 0"	92.96	49.2*	22.3*	46.5*	21.0*	41.8*	18.9*	36.1*	16.3*
	80	24.38	64.3	302' 8"	92.26	48.6*	22.0*	46.1*	20.9*	41.4*	18.7*	34.8*	15.7*
	90	27.43	60.0	297' 4"	90.62	48.0*	21.7*	45.6*	20.6*	40.6*	18.4*	32.9*	14.9*
	100	30.48	55.6	290' 10"	88.64	46.4	21.0	43.8*	19.8	38.3*	17.3*	31.0*	14.0*
	110	33.53	50.9	283' 2"	86.32	41.0	18.5	38.6*	17.5	33.8*	15.3*	29.0*	13.1*
	120	36.58	45.8	273' 11"	83.48	36.6	16.6	33.9*	15.3	29.8*	13.5*	25.7*	11.6*
	130	39.62	40.2	262' 11"	80.13	32.3*	14.6*	29.5*	13.3*	26.2*	11.8*	22.7*	10.2*
	140	42.67	33.8	249' 1"	75.93	28.0*	12.7*	25.7*	11.6*	22.8*	10.3*	20.3*	9.2*
150	45.72	26.2	230' 10"	70.35	24.3*	11.0*	22.4*	10.1*	20.1*	9.1*	17.4*	7.8*	
160	48.77	15.6	201' 5"	61.39	21.4*	9.7*	19.9*	9.0*	17.8*	8.0*	15.5*	7.0*	
160' (48.77 m)	49	14.93	77.6	324' 2"	98.76	49.7*	22.5*	46.2*	20.9*	—	—	—	—
	50	15.24	77.1	323' 11"	98.72	49.5*	22.4*	46.0*	20.8*	41.7*	18.9*	35.9*	16.2*
	55	16.76	75.3	322' 8"	98.36	48.3*	21.9*	45.1*	20.4*	40.9*	18.5*	35.8*	16.2*
	60	18.29	73.5	321' 4"	97.93	47.1*	21.3*	42.6*	19.3*	40.1*	18.1*	35.1*	15.9*
	65	19.81	71.6	319' 7"	97.41	43.9*	19.9*	41.7*	18.9*	39.3*	17.8*	34.8*	15.7*
	70	21.34	70.0	317' 11"	96.90	43.4*	19.6*	41.3*	18.7*	38.9*	17.6*	34.4*	15.6*
	75	22.83	67.9	315' 11"	96.29	42.9*	19.4*	40.8*	18.5*	38.1*	17.2*	33.5*	15.1*
	80	24.38	65.9	313' 8"	95.62	42.0*	19.0*	40.3*	18.2*	37.8*	17.1*	32.3*	14.6*
	90	27.43	62.0	308' 10"	94.12	41.7*	18.9*	39.8*	18.0*	37.1*	16.8*	30.5*	13.8*
	100	30.48	58.0	302' 11"	92.32	41.4*	18.7*	39.6*	17.9*	35.8*	16.2*	28.8*	13.0*
	110	33.53	53.7	295' 11"	90.19	40.4*	18.3*	36.2*	16.4*	31.6*	14.3*	27.2*	12.3*
	120	36.58	49.2	287' 8"	87.69	34.9*	15.8*	31.5*	14.2*	27.8*	12.6*	23.7*	10.7*
	130	39.62	44.2	278' 0"	84.73	29.8*	13.5*	27.4*	12.4*	24.1*	10.9*	20.7*	9.3*
	140	42.67	38.8	266' 5"	81.20	25.8*	11.7*	23.7*	10.7*	20.9*	9.4*	18.1*	8.2*
150	45.72	32.7	251' 11"	76.78	22.0*	9.9*	20.3*	9.2*	18.1*	8.2*	15.7*	7.1*	
160	48.77	25.3	233' 0"	71.02	18.8*	8.5*	17.6*	7.9*	15.7*	7.1*	13.5*	6.1*	
170	51.82	15.0	202' 6"	61.72	16.4*	7.4*	15.3*	6.9*	13.6*	6.1*	11.8*	5.3*	
170' (51.82 m)	52	15.84	77.3	333' 8"	101.69	42.6*	19.3*	40.4*	18.3*	—	—	—	—
	55	16.76	76.2	333' 0"	101.50	42.1*	19.0*	39.8*	18.0*	37.5*	17.0*	32.5*	14.7*
	60	18.29	74.5	331' 8"	101.10	41.3*	18.7*	39.0*	17.6*	36.8*	16.6*	31.9*	14.4*
	65	19.81	72.7	330' 2"	100.59	40.5*	18.3*	38.2*	17.3*	36.1*	16.3*	31.6*	14.3*
	70	21.34	71.0	328' 6"	100.13	39.7*	18.0*	37.8*	17.1*	35.7*	16.1*	31.0*	14.0*
	75	22.83	69.2	326' 7"	99.56	39.2*	17.7*	37.1*	16.8*	35.0*	15.8*	30.8*	13.9*
	80	24.38	67.4	324' 8"	98.97	38.7*	17.5*	36.8*	16.6*	34.3*	15.5*	30.0*	13.6*
	90	27.43	63.7	320' 0"	97.54	37.8*	17.1*	36.1*	16.3*	33.6*	15.2*	28.3*	12.8*
100	30.48	60.0	314' 7"	95.89	37.5*	17.0*	35.8*	16.2*	33.3*	15.1*	26.7*	12.1*	
110	33.53	56.0	308' 2"	93.94	37.4*	16.9*	34.0*	15.4*	29.5*	13.3*	25.0*	11.3*	
120	36.58	51.9	300' 10"	91.68	32.6*	14.7*	29.4*	13.3*	25.7*	11.6*	22.0*	9.9*	

ⓐ Capacities shown in thousands of pounds and kilograms.

ⓑ Measured vertically from center of boom head sheave to ground.

(continued)

LS-718 tower crane capacities — tower plus boom only

Refer to Notes page 5.

Boom						Based on 30 m.p.h. (48.27 km/hr.) wind speed							
Length	Radius		Angle	160' (48.77 m) tower boom ③		Capacities ① with side frames extended — 360° swing							
	Feet	meters		Feet	meters	Tower heights							
							140' (42.67 m) to 160' (48.77 m)		170' (51.82 m) to 190' (57.91 m)		200' (60.96 m) to 220' (67.06 m)		230' (70.10 m) to 250' (76.20 m)
						Lbs.	kgs	Lbs.	kgs	Lbs.	kgs	Lbs.	kgs
170' (51.82 m)	130	39.62	47.5	292' 1"	89.03	27.8*	12.6*	25.2*	11.4*	22.2*	10.0*	18.9*	8.5*
	140	42.67	42.8	281' 11"	85.92	23.4*	10.6*	21.6*	9.7*	19.0*	8.6*	16.2*	7.3*
	150	45.72	37.6	269' 8"	82.20	19.7*	8.9*	18.4*	8.3*	16.2*	7.3*	13.9*	6.3*
	160	48.77	31.7	254' 10"	77.66	16.6*	7.5*	15.5*	7.0*	13.7*	6.2*	11.7*	5.3*
	170	51.82	24.5	235' 1"	71.66	13.7*	6.2*	13.0*	5.8*	11.5*	5.2*	9.9*	4.4*
	180	54.86	14.5	203' 7"	62.06	11.9*	5.3*	11.1*	5.0*	9.7*	4.3*	8.3*	3.7*
180' (54.86 m)	55	16.76	76.9	343' 4"	104.64	38.5*	17.4*	36.3*	16.4*	—	—	—	—
	57	17.37	76.5	342' 9"	104.47	38.1*	17.2*	36.0*	16.3*	33.9*	15.3*	29.2*	13.2*
	60	18.29	75.3	342' 1"	104.27	37.7*	17.1*	35.6*	16.1*	33.6*	15.2*	28.9*	13.1*
	65	19.81	73.7	340' 7"	103.81	37.0*	16.7*	34.9*	15.8*	32.8*	14.8*	28.6*	12.9*
	70	21.34	72.0	339' 1"	103.36	36.3*	16.4*	34.2*	15.5*	32.2*	14.6*	28.1*	12.7*
	75	22.83	70.3	337' 4"	102.81	35.6*	16.1*	33.9*	15.3*	31.8*	14.4*	27.8*	12.6*
	80	24.38	68.7	335' 6"	102.26	35.3*	16.0*	33.5*	15.1*	31.2*	14.1*	27.5*	12.4*
	90	27.43	65.3	331' 2"	100.95	34.5*	15.6*	32.6*	14.7*	30.5*	13.8*	26.0*	11.7*
	100	30.48	61.7	326' 1"	99.40	33.8*	15.3*	32.3*	14.6*	29.9*	13.6*	24.5*	11.1*
	110	33.53	58.1	320' 2"	97.60	33.7*	15.2*	31.7*	14.3*	27.3*	12.3*	22.9*	10.3*
	120	36.58	54.3	313' 5"	95.52	30.2*	13.6*	27.1*	12.2*	23.7*	10.7*	20.0*	9.0*
	130	39.62	50.4	305' 6"	93.12	25.4*	11.5*	23.2*	10.5*	20.2*	9.1*	17.2*	7.8*
	140	42.67	46.1	296' 5"	90.34	21.4*	9.7*	19.5*	8.8*	17.2*	7.8*	14.5*	6.5*
	150	45.72	41.5	285' 8"	87.08	17.7*	8.0*	16.3*	7.3*	14.4*	6.5*	12.2*	5.5*
160	48.77	36.4	273' 0"	83.21	14.5*	6.5*	13.5*	6.1*	11.9*	5.3*	10.0*	4.5*	
170	51.82	30.7	257' 6"	78.49	11.9*	5.3*	11.0*	4.9*	9.6*	4.3*	8.1*	3.6*	
180	54.86	23.7	237' 1"	72.27	9.4*	4.2*	8.9*	4.0*	7.8*	3.5*	6.5*	2.9*	
190	57.91	13.9	204' 7"	62.36	7.7*	3.4*	7.2*	3.2*	6.2*	2.8*	5.1*	2.3*	
190' (57.91 m)	57	17.37	77.0	353' 1"	102.62	34.9*	15.8*	—	—	—	—	—	—
	60	18.29	76.1	352' 5"	107.41	34.6*	14.6*	32.5*	14.7*	30.4*	13.7*	26.0*	11.7*
	65	19.81	74.5	351' 0"	106.98	33.8*	15.3*	31.8*	14.4*	29.8*	13.5*	25.7*	11.6*
	70	21.34	73.0	349' 7"	106.56	33.2*	15.0*	31.2*	14.1*	29.2*	13.2*	25.2*	11.4*
	75	22.83	71.4	347' 11"	106.04	32.6*	14.7*	30.6*	13.8*	28.9*	13.1*	25.0*	11.3*
	80	24.38	69.8	346' 2"	105.52	32.0*	14.5*	30.3*	13.7*	28.4*	12.8*	24.6*	11.1*
	90	27.43	66.6	342' 1"	104.27	31.2*	14.1*	29.6*	13.4*	27.7*	12.5*	23.8*	10.7*
	100	30.48	63.3	337' 5"	102.84	30.6*	13.8*	29.1*	13.1*	27.0*	12.2*	22.3*	10.1*
	110	33.53	60.0	331' 11"	101.16	30.3*	13.7*	28.8*	13.0*	25.2*	11.4*	21.0*	9.5*
	120	36.58	56.5	325' 7"	99.24	27.8*	12.6*	25.1*	11.3*	21.6*	9.7*	18.3*	8.3*
	130	39.62	52.8	318' 5"	97.05	23.2*	10.5*	21.1*	9.5*	18.4*	8.3*	15.4*	6.9*
	140	42.67	48.9	310' 1"	94.52	19.1*	8.6*	17.6*	7.9*	15.2*	6.8*	12.9*	5.8*
	150	45.72	44.8	300' 6"	91.59	15.5*	7.0*	14.4*	6.5*	12.5*	5.6*	10.5*	4.7*
	160	48.77	40.3	289' 5"	88.21	12.3*	5.5*	11.6*	5.2*	10.1*	4.5*	8.4*	3.8*
170	51.82	35.4	276' 2"	84.19	9.6*	4.3*	9.1*	4.1*	7.9*	3.5*	6.5*	2.9*	
180	54.86	29.8	260' 1"	79.28	7.3*	3.3*	6.9*	3.1*	5.9*	2.6*	4.8*	2.1*	
190	57.91	23.1	239' 1"	72.88	5.3*	2.4*	5.1*	2.3*	4.3*	1.9*	3.3*	1.4*	
200	60.96	13.5	205' 8"	62.70	3.9*	1.7*	3.7*	1.6*	3.0*	1.3*	2.1*	0.9*	
200' (60.96 m)	61	18.59	76.5	362' 5"	110.46	31.0*	14.0*	—	—	—	—	—	—
	62	18.89	76.3	362' 2"	110.34	30.9*	14.0*	29.0*	13.1*	—	—	—	—
	65	19.81	75.3	361' 5"	110.15	30.6*	13.8*	28.7*	13.0*	26.9*	12.2*	22.9*	10.3*
	70	21.34	73.8	360' 0"	109.73	30.0*	13.6*	28.2*	12.7*	26.4*	11.9*	22.5*	10.2*
	75	22.83	72.4	358' 5"	109.24	29.4*	13.3*	27.7*	12.5*	25.9*	11.7*	22.3*	10.1*
	80	24.38	70.9	356' 10"	108.75	28.9*	13.1*	27.2*	12.3*	25.4*	11.5*	21.9*	9.9*
	90	27.43	67.8	352' 11"	107.56	28.1*	12.7*	26.5*	12.0*	24.8*	11.2*	21.4*	9.7*
	100	30.48	64.7	348' 7"	106.25	27.5*	12.4*	26.0*	11.7*	24.2*	10.9*	20.3*	9.2*
	110	33.53	61.6	343' 5"	104.67	27.0*	12.2*	25.7*	11.6*	23.3*	10.5*	19.0*	8.6*
	120	36.58	58.3	337' 5"	102.84	25.6*	11.6*	22.8*	10.3*	19.8*	8.9*	16.5*	7.4*
	130	39.62	54.9	330' 10"	100.83	21.1*	9.5*	19.1*	8.6*	16.4*	7.4*	13.6*	6.1*
	140	42.67	51.4	323' 2"	98.51	17.1*	7.7*	15.7*	7.1*	13.5*	6.1*	11.2*	5.0*
	150	45.72	47.6	314' 6"	95.86	13.5*	6.1*	12.5*	5.6*	10.8*	4.8*	8.8*	3.9*
	60	48.77	43.6	304' 6"	92.81	10.4*	4.7*	9.7*	4.3*	8.3*	3.7*	6.7*	3.0*
170	51.82	39.2	292' 11"	89.28	7.6*	3.4*	7.2*	3.2*	6.1*	2.7*	4.8*	2.1*	
180	54.86	34.4	279' 4"	85.13	5.2*	2.3*	5.1*	2.3*	4.2*	1.9*	3.1*	1.4*	
190	57.91	29.0	262' 7"	80.04	3.2*	1.4*	3.2*	1.4*	2.5*	1.1*	1.6*	0.7*	
200	60.96	22.4	241' 0"	73.46	1.5*	0.6*	1.7*	0.7*	1.0*	0.4*	—	—	

① Capacities shown in thousands of pounds and kilograms.
 ② Measured vertically from center of boom head sheave to ground.

GENERAL INFORMATION ONLY

LS-718 tower boom/jib working ranges

Tower — tubular; 100" (2.54 m) wide, 85" (2.16 m) deep, with retractable gantry, tower live mast, dual 1½" (28 mm) diameter tower pendants and dual 1½" (28 mm) diameter balance arm pendants.

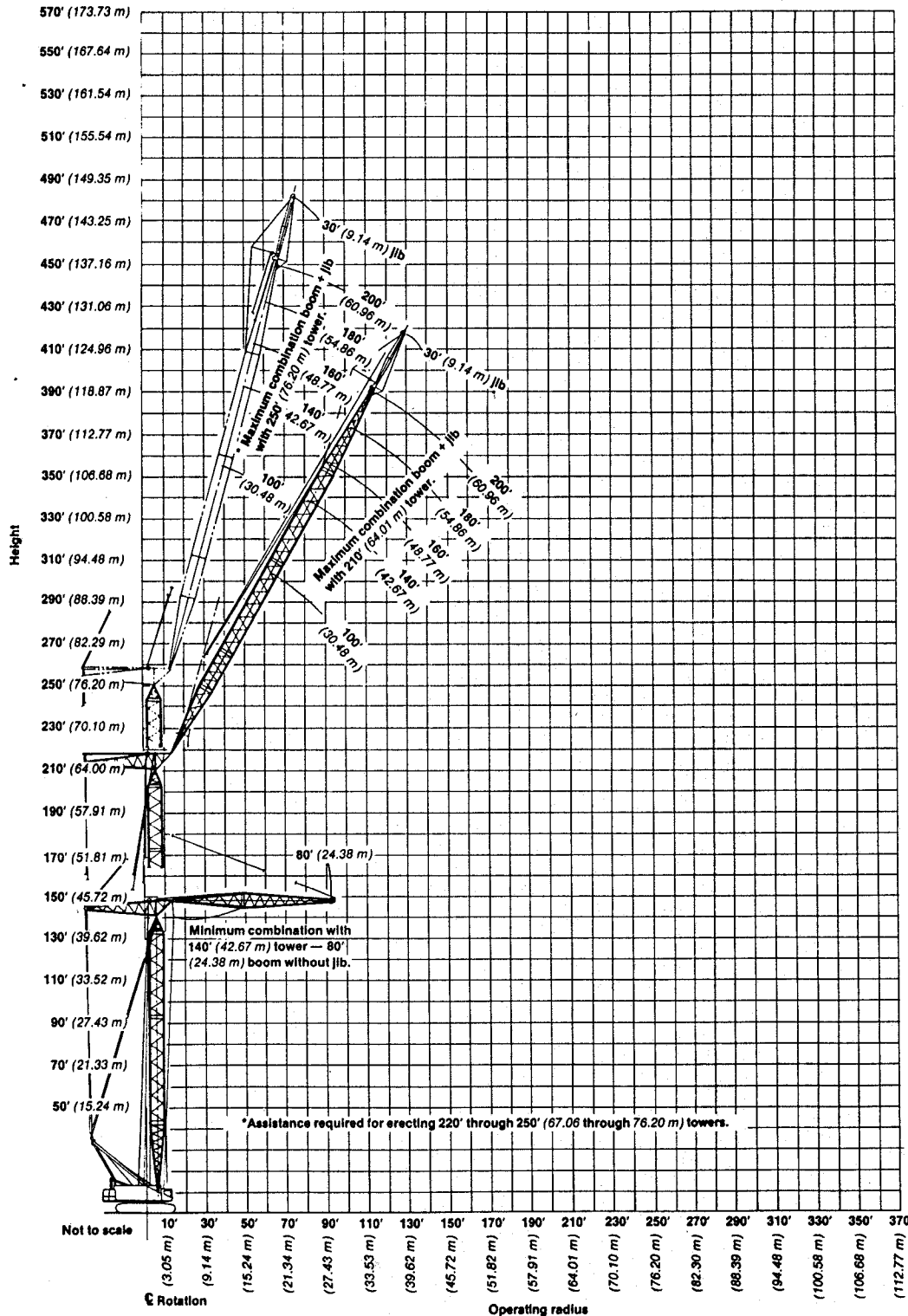
Boom — tubular; 100" (2.54 m) wide, 85" (2.16 m) deep, with open throat top section, boom live mast dual 1½" (28 mm) diameter pendants.

Crawler — 17' 6" (5.33 m) extended gauge, 29' 11" (9.12 m) overall length.

Counterweight — 134,500# (61 009 kg) "AB" only.

Jib — tubular; 36" (0.91 m) wide, 30" (0.76 m) deep. Mounted in-line only.

GENERAL INFORMATION ONLY



LS-718 tower crane capacities — tower plus boom only

Refer to Notes below.

Notes — boom lifting capacities

- Capacities included in this chart are the maximum allowable, and are based on machine standing level on firm supporting surface under ideal job conditions.
- Capacities do not exceed 75% of a static load required to tip the machine. An asterisk (*) indicates capacities are based on factors other than stability.
- Capacities are based on freely suspended loads and make no allowance for such factors as the effect of wind, sudden stopping of loads, supporting surface conditions, and operating speeds. Operator must reduce load ratings to take such conditions into account. Deduction from rated capacities must be made for weight of jib, hook block, weighted ball/hook, sling, spreader bar, or other suspended gear.
- Refer to operator's manual for instructions pertaining to raising or lowering of attachment.
- Retractable gantry in raised position, and 40' (12.19 m) tower live mast in operating position, must be used for all capacities on this chart.
- Boom point height dimensions based on 160' (48.77 m) tower height. As tower sections are added or removed, length of sections must be added to, or subtracted from, the boom point height dimensions on this chart to determine revised dimensions.
- For lifting maximum rated load — 100,000# (45 360 kg) — with 1 1/4" (32 mm) diameter wire rope 3 parts of type "N" wire are required. Check parts of line required for all capacities.
- All capacities rated for 360° swing.
- Least stable rated condition is over the side.
- Tower must be positioned 90° to horizontal for all capacities shown on this chart.
- Tower lengths from 230' (70.10 m) through 250' (76.20 m) require outside assistance for erection or lowering.
- Boom lengths 170' (51.82 m) through 200' (60.92 m) require outside assistance for erection or lowering — when mounted on tower heights from 220' (76.06 m) through 250' (76.20 m).
- Attachment must be erected and lowered over the ends of the crawler mounting. Adequate blocking must be placed under track drive and idler sprockets to prevent machine's rocking.
- These capacities apply only to the machine as originally manufactured and normally equipped by FMC Corporation Construction Equipment Group.

LS-718 tower crane capacities — tower plus boom plus jib

Refer to Notes page 6.

Tower — tubular; 100" (2.54 m) wide, 85" (2.16 m) deep, with retractable gantry, tower live mast, dual 1 1/4" (28 mm) diameter tower pendants and dual 1 1/4" (28 mm) diameter balance arm pendants.

Boom — tubular; 100" (2.54 m) wide, 85" (2.16 m) deep, with open throat top section, boom live mast dual 1 1/4" (28 m) diameter pendants.

Counterweight — 134,500# (61 009 kg) "AB" only.

Jib — tubular; 36" (0.91 m) wide, 30" (0.76 m) deep. Mounted in-line only.

Mounting — crawler; 17' 6" (5.33 m) extended gauge, 29' 11" (9.12 m) overall length.

NOTE: The following chart only includes representative capacities of a 30' (9.14 m) jib mounted in-line with boom. Should additional jib capacity information be required, please consult Sales Office.

Based on 30 m.p.h. (48.27 km/hr.) wind speed							
Jib capacities [ⓐ] with side frames extended — 360° swing							
Boom length	Jib load radius		Jib point height [ⓑ] -200' (60.96 m) tower		Boom angle Deg.	Jib capacities	
	Feet	meters	Feet	meters		Lbs.	kgs
100' (30.48 m)	40	12.19	337' 7"	102.89	78.5	30.0	13.6
	50	15.24	335' 1"	102.13	74.0	30.0	13.6
	60	18.29	331' 10"	101.13	69.5	30.0	13.6
	70	21.34	327' 8"	99.86	64.8	30.0	13.6
	80	24.38	322' 4"	98.24	59.9	29.4	13.3
	90	27.43	316' 0"	96.31	54.7	25.8	11.7
	100	30.48	308' 2"	93.92	49.2	23.0	10.4
	110	33.53	298' 7"	91.01	43.2	20.8	9.4
	120	36.58	286' 8"	87.37	36.4	19.1	8.7
	130	39.62	270' 10"	82.54	28.2	17.7	8.0
140	42.67	247' 1"	75.31	16.9	16.7	7.6	
120' (36.58 m)	50	15.24	355' 9"	108.43	76.2	30.0	13.6
	60	18.29	353' 0"	107.59	72.3	30.0	13.6
	70	21.34	349' 4"	106.47	68.3	30.0	13.6
	80	24.38	345' 0"	105.15	64.1	30.0	13.6
	90	27.43	339' 8"	103.52	59.9	29.3	13.3
	100	30.48	333' 4"	101.59	55.4	26.2	11.0
	110	33.53	325' 10"	99.31	50.7	23.7	10.8
	120	36.58	317' 0"	96.62	45.6	21.6	9.8
	130	39.62	306' 2"	93.31	40.1	19.9	9.0

Based on 30 m.p.h. (48.27 km/hr.) wind speed							
Jib capacities [ⓐ] with side frames extended — 360° swing							
Boom length	Jib load radius		Jib point height [ⓑ] -200' (60.96 m) tower		Boom angle Deg.	Jib capacities	
	Feet	meters	Feet	meters		Lbs.	kgs
120' (36.58 m)	140	42.67	293' 0"	89.30	33.8	18.6	8.4
	150	45.72	275' 9"	84.05	26.3	17.4	7.9
	160	48.77	250' 1"	76.23	15.8	16.0	7.3
	50	15.24	376' 4"	114.70	77.8	30.0	13.6
140' (42.67 m)	60	18.29	373' 10"	113.94	74.4	30.0	13.6
	70	21.34	370' 9"	113.00	70.9	30.0	13.6
	80	24.38	367' 0"	111.86	67.3	30.0	13.6
	90	27.43	362' 4"	110.43	63.7	29.4	13.3
	100	30.48	357' 0"	108.81	59.9	26.6	12.1
	110	33.53	350' 9"	106.91	56.0	23.7	10.8
	120	36.58	343' 6"	104.69	51.8	21.2	9.6
	130	39.62	335' 0"	102.10	47.5	18.9	8.6
	140	42.67	325' 1"	99.09	42.8	16.2	7.3
	150	45.72	313' 3"	95.48	37.6	13.9	6.3
	160	48.77	298' 10"	91.08	31.7	11.7	5.3
	170	51.82	280' 3"	85.42	24.7	9.9	4.5
	180	54.87	252' 9"	77.03	14.8	8.3	3.8

(continued)

[ⓐ] Capacities shown in thousands of pounds and kilograms.
[ⓑ] Measured vertically from center of jib peak sheave to ground.