

○ TRIPHASE

☒ 400 V

■ MONOTRIPHASE





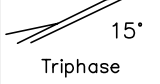
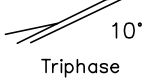
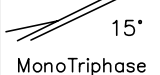
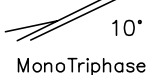
☒ 230/400 V

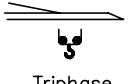



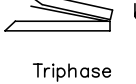

GRU A MONTAGGIO RAPIDO
GRUE A MONTAGE RAPIDE
GRUA DE RAPIDO MONTAJE
GRUA DE MONTAGEM RAPIDA
QUICK SELFRECTING CRANE
HYDRAULISCHER SCHNELLMONTAGEKRAN



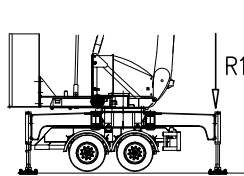
FEM 1.001-A3

Curve di carico – Courbes de charges – Load diagrams – LastKurven – Curvas de cargas

 25° Triphase	☐ 400V	<table border="1"> <tr><td>3</td><td>23</td><td>26</td><td>27,7</td></tr> <tr><td>600</td><td>600</td><td>600</td><td>600</td></tr> </table>	3	23	26	27,7	600	600	600	600	m kg	 20° Triphase	☐ 400V	<table border="1"> <tr><td>3</td><td>23</td><td>26</td><td>28,4</td></tr> <tr><td>600</td><td>600</td><td>600</td><td>600</td></tr> </table>	3	23	26	28,4	600	600	600	600	m kg
3	23	26	27,7																				
600	600	600	600																				
3	23	26	28,4																				
600	600	600	600																				
 25° MonoTriphase	☐ 230/400V	<table border="1"> <tr><td>3</td><td>23</td><td>26</td><td>27,7</td></tr> <tr><td>500</td><td>500</td><td>500</td><td>500</td></tr> </table>	3	23	26	27,7	500	500	500	500	m kg	 20° MonoTriphase	☐ 230/400V	<table border="1"> <tr><td>3</td><td>23</td><td>26</td><td>28,4</td></tr> <tr><td>600</td><td>600</td><td>600</td><td>600</td></tr> </table>	3	23	26	28,4	600	600	600	600	m kg
3	23	26	27,7																				
500	500	500	500																				
3	23	26	28,4																				
600	600	600	600																				
 15° Triphase	☐ 400V	<table border="1"> <tr><td>3</td><td>23</td><td>26</td><td>29,3</td></tr> <tr><td>700</td><td>700</td><td>700</td><td>700</td></tr> </table>	3	23	26	29,3	700	700	700	700	m kg	 10° Triphase	☐ 400V	<table border="1"> <tr><td>3</td><td>23</td><td>26</td><td>29,7</td></tr> <tr><td>700</td><td>700</td><td>700</td><td>700</td></tr> </table>	3	23	26	29,7	700	700	700	700	m kg
3	23	26	29,3																				
700	700	700	700																				
3	23	26	29,7																				
700	700	700	700																				
 15° MonoTriphase	☐ 230/400V	<table border="1"> <tr><td>3</td><td>23</td><td>26</td><td>29,3</td></tr> <tr><td>700</td><td>700</td><td>700</td><td>700</td></tr> </table>	3	23	26	29,3	700	700	700	700	m kg	 10° MonoTriphase	☐ 230/400V	<table border="1"> <tr><td>3</td><td>23</td><td>26</td><td>29,7</td></tr> <tr><td>700</td><td>700</td><td>700</td><td>700</td></tr> </table>	3	23	26	29,7	700	700	700	700	m kg
3	23	26	29,3																				
700	700	700	700																				
3	23	26	29,7																				
700	700	700	700																				

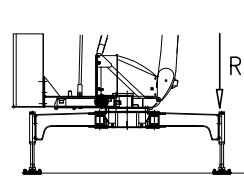
 Triphase	☐ 400V	<table border="1"> <tr><td>3</td><td>13,53</td><td>14</td><td>18</td><td>22</td><td>26</td><td>30</td></tr> <tr><td>2400</td><td>2400</td><td>2300</td><td>1690</td><td>1320</td><td>1070</td><td>900</td></tr> </table>	3	13,53	14	18	22	26	30	2400	2400	2300	1690	1320	1070	900	m kg				
3	13,53	14	18	22	26	30															
2400	2400	2300	1690	1320	1070	900															
 MonoTriphase	☐ 230/400V	<table border="1"> <tr><td>3</td><td>13,53</td><td>14</td><td>18</td><td>22</td><td>26</td><td>30</td></tr> <tr><td>2200</td><td>2200</td><td>2100</td><td>1690</td><td>1320</td><td>1070</td><td>900</td></tr> </table>	3	13,53	14	18	22	26	30	2200	2200	2100	1690	1320	1070	900	m kg				
3	13,53	14	18	22	26	30															
2200	2200	2100	1690	1320	1070	900															
 Triphase	☐ 400V	<table border="1"> <tr><td>3</td><td>13,7</td><td>14</td><td>16</td><td>18</td><td>20</td><td>22</td><td>24</td><td>26</td></tr> <tr><td>2400</td><td>2400</td><td>2350</td><td>2000</td><td>1720</td><td>1510</td><td>1350</td><td>1210</td><td>1100</td></tr> </table>	3	13,7	14	16	18	20	22	24	26	2400	2400	2350	2000	1720	1510	1350	1210	1100	m kg
3	13,7	14	16	18	20	22	24	26													
2400	2400	2350	2000	1720	1510	1350	1210	1100													
 MonoTriphase	☐ 230/400V	<table border="1"> <tr><td>3</td><td>13,7</td><td>14</td><td>16</td><td>18</td><td>20</td><td>22</td><td>24</td><td>26</td></tr> <tr><td>2200</td><td>2200</td><td>2150</td><td>2000</td><td>1720</td><td>1510</td><td>1350</td><td>1210</td><td>1100</td></tr> </table>	3	13,7	14	16	18	20	22	24	26	2200	2200	2150	2000	1720	1510	1350	1210	1100	m kg
3	13,7	14	16	18	20	22	24	26													
2200	2200	2150	2000	1720	1510	1350	1210	1100													
 Triphase	☐ 400V	<table border="1"> <tr><td>3</td><td>13,3</td></tr> <tr><td>2400</td><td>2400</td></tr> </table>	3	13,3	2400	2400	m kg	 MonoTriphase	☐ 230/400V	<table border="1"> <tr><td>3</td><td>13,3</td></tr> <tr><td>2200</td><td>2200</td></tr> </table>	3	13,3	2200	2200	m kg						
3	13,3																				
2400	2400																				
3	13,3																				
2200	2200																				

Reazioni – Reactions – Réactions – Eckdrücke – Reacciones



R1 ● 15,2 t ■ 11,2 t

▲ 23,5 t



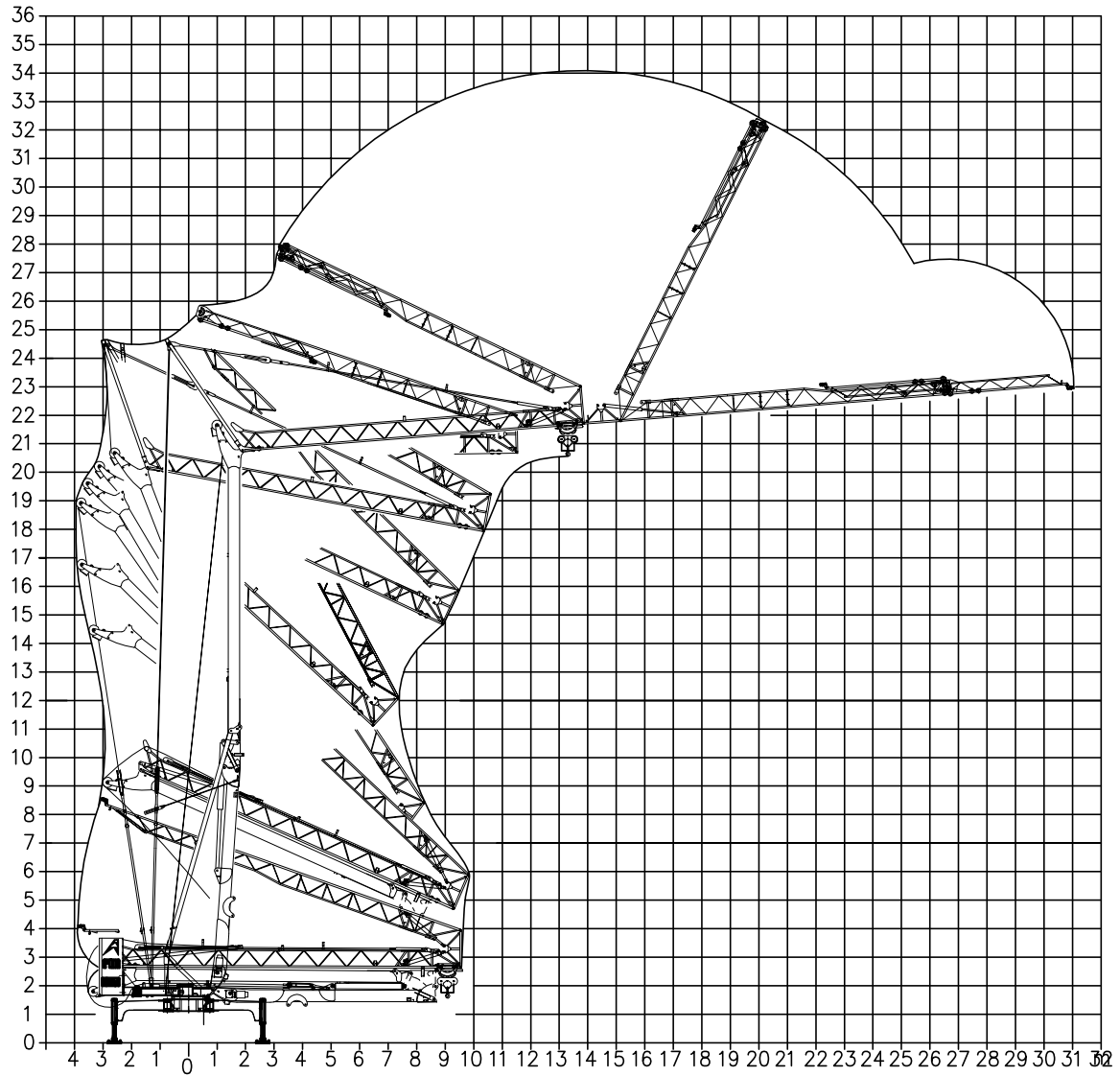
R1 ● 14,5 t ■ 10,5 t

▲ 20,5 t

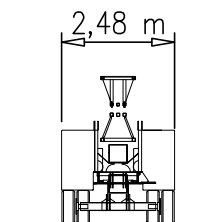
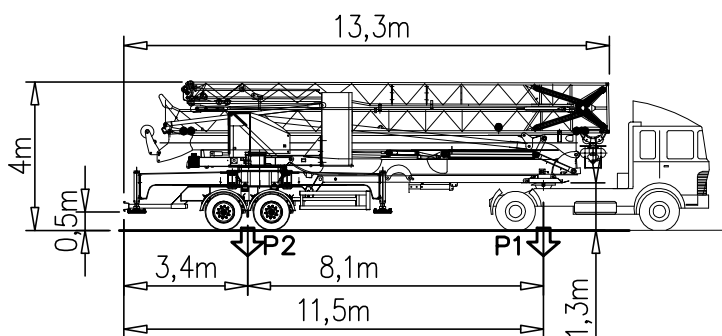
- | | | |
|-------------------------------|---------------------------------------|--------------------------------------|
| ● Reazioni in servizio | ● Reactions in service | ● Réactions en service |
| ■ Reazioni fuori servizio | ■ Reactions out of service | ■ Réactions hors service |
| ▲ Peso della gru senza assali | ▲ Dead weight without transport axles | ▲ Poids de construction sans essieux |

- | | | |
|--|--|---|
| ● Reaktionskräfte in betrieb | ● Reacciones en servicio | ● Em serviço |
| ■ Reaktionskräfte außer betrieb | ■ Reacciones fuera de servicio | ■ Fora de serviço |
| ▲ Konstruktionsgewicht ohne transportachse | ▲ Peso de la grua sin tren de transporte | ▲ Peso de la grua sem carro de transporte |

Montaggio – Montage – Erection – Montage – Montaje



Trasporto – Transport – Transport – Transport – Transporte – 80 km/h



P1	Kg	8040
P2	Kg	21400
Ptot	Kg	29440

Triphase – 400V	V9.32						V9.32 6.6 Kw (9 Hp) 16 kVA
		m/min	4	13	32		
	t	2.4	2.4	1.0	0.6		
	Sollevamento Hoisting Levage Heben Elevaciòn Elevaçao						
Carrello Trolleying Distribution Katzfahren Distribuciòn Distribuiçao		1a	0 → 30		m/min	2.2 kW (3 Hp)	
		2a					
Rotazione Slewing Orientation Schwenken Orientaciòn Rotaçao		1a	0 → 0.8		giri/min tr/min rp/min	2.2 kW (3 Hp)	
		2a					
		3a					

MonoTriphase – 230/400V	V9.32						V9.32 6.6 Kw (9 Hp) 230V–3kVA 400V–6kVA
		m/min	4	11	25		
	t	2.2	2.2	1.0	0.6		
	Sollevamento Hoisting Levage Heben Elevaciòn Elevaçao						
Carrello Trolleying Distribution Katzfahren Distribuciòn Distribuiçao		1a	0 → 30		m/min	2.2 kW (3 Hp)	
		2a					
Rotazione Slewing Orientation Schwenken Orientaciòn Rotaçao		1a	0 → 0.8		giri/min tr/min rp/min	2.2 kW (3 Hp)	
		2a					
		3a					

Rete elettrica – Réseau – Mains supply – Netzstrom – Red	230/400V – 50 Hz	400V – 50 Hz
Potenza elettrica necessaria – Puissance électrique nécessaire Necessary electric power – Anschlusswert Potencia electrica necesaria	V9.32/230 – 3 kVA V9.32/400 – 6 kVA	V9.32 – 16 kVA

FMgru s.r.l.
 via Emilia 11–29010 Pontenure PC ITALY
 tel. 0523/510446 ric.aut. fax 0523/510365
 www.fmgru.it e-mail: info@fmgru.com

FEM 1.001–A3
 2000/14/CE



Documento commerciale non contrattuale
Per tutte le informazioni tecniche riferirsi
alle corrispondenti istruzioni

Unverbindliches Vertriebsdokument.
Für technische Informationen, siehe die
entsprechenden Anweisungen.

This commercial document is not legally
binding. For any technical information, please
refer to the corresponding instructions.

Documento commercial no contractual
Para cualquier información técnica,
ver la noticia correspondiente.

Code: 15ICA37B58A0			
Ed.	Data	Rev	Data
1	27.03.13	0	27.03.13