

GHCT30

Capacity: 120 t (132 USt)

Main boom: 12,6 m — 40,2 m (41 ft 4 in — 131 ft 11 in)
four-section full power boom

Standard boom extension: 8 m (26 ft 3 in)
offsettable boom extension

Maximum boom extension: 15 m (49 ft 3 in)
offsettable boom extension and 12 m (39 ft 4 in)
inserts

Maximum tip height: 70 m (229 ft 8 in)

Optional attachments include
15 m (49 ft 3 in) offsettable boom
extension, two 5,6 m (18 ft 4 in)
lattice inserts with 0,8 m (2 ft 8 in)
boom head and personnel basket

Standard 8 m (26 ft 3 in) offsettable,
swingaway boom extension with
offsets at 0°, 20° and 40°

Quick-reeve hook block
and boom nose



Operator's cab

12,6 m — 40,2 m (41 ft 4 in — 131 ft 11 in)
four-section, full-power, sequenced-
synchronized telescopic boom

Main and auxiliary hoist are
standard with both drum rotation
and third wrap indicator

Self-assembling, hydraulically
removable counterweight

Cummins QSB 6.7L Tier 3 or Tier 4
final diesel engine*

Large access compartments
for both engine and hydraulic
components

Two-speed
hydrostatic drive

20° tilt cab

Hydraulically extendable
and retractable crawlers

360° continuous rotation

Frame-mounted jacks allow
for installation and removal
of crawler tracks

900 mm (36 in) triple
bar, maintenance-free
track shoes

Foldable handrail

High-visibility cab

External light bar

*Tier 4 engine required in North America and Canada

Unmatched capacity

- 120 t (132 USt) rated
- Excellent capacities at mid-range: 19 300 kg (46,400 lb) at a radius of 16 m (50 ft) with 18,9 m (62 ft) of boom
- Superior capacities at reach: 5100 kg (11,900 lb) at a maximum radius of 36 m (115 ft)

Outstanding versatility and durability

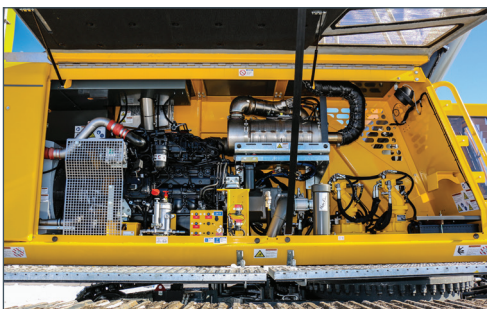
- Maximum tip height of 70 m (229 ft 8 in) with optional inserts and boom extensions for increased reach
- Optional personnel basket attachment provides maximum versatility on the job
- Cummins QSB 6.7L Tier 3 or Tier 4 final diesel engine — proven performance that conforms to EPA requirements
- Works at up to 4° of inclination
- 63% gradeability (theoretical), allowing the operator to tackle the most daunting terrains
- Greater productivity with 18 365 kg (40,488 lb) maximum hoist pull on both main and auxiliary hoists

Easy to transport and quick self-assembly

- Transports to the jobsite complete in three to five loads
- Retracted travel gauge
- Upper counterweight can be hydraulically installed and removed via the counterweight self-assembly system
- Undercarriage equipped with jacks for easy self-assembly of the crawlers

Excellent serviceability

- Central, easily accessible lubricating points
- Optional automatic central lubrication system
- Removable access platforms on both sides of the upper carriage
- Foldable handrail on the top of the upper carriage
- Work lights in both the engine and hydraulic compartments
- 3-micron filters provides optimal protection, cleaner oil and extended oil service life



Strong undercarriage with excellent mobility

- 100% pick and carry
- Two-speed hydrostatic drive
- Hydraulically extendable and retractable crawlers
- Allows for skid steering and counterrotation



Versatile attachments

- Standard 8 m (26 ft 3 in) offsettable swingaway boom extension
- Optional 7 m (23 ft) fly extension to be used with standard boom extension for a total of 15 m (49 ft 3 in)
- Optional two 5,6 m (18 ft 4 in) lattice inserts with 0,8 m (2 ft 8 in) boom head for total added length of 12 m (39 ft 4 in)
- Optional 544,3 kg (1200 lb) personnel basket



Outstanding operator ergonomics in a large, high-visibility cab

- 20° tilt cab
- Load-sensing, electric, dual-axis joystick controls
- Air-suspended, heated operator seat
- Color monitor for up to four exterior cameras
- Graphical RCL for load moment with advanced crane performance optimization and diagnostics
- Climate control provides all day comfort

