

**LOAD RATINGS IN LBS. WITH OUTRIGGERS EXTENDED**

LOADED BOOM ANGLE	27 FT	35 FT	44 FT	56 FT	65 FT	70 FT
5	27	34000				
8	70	26000	76	24500		
10	65	21500	73	20800	77	20500
12	60	18900	70	17900	74	17500
14	55	16600	66	15700	70	15300
16	49	14700	63	14000	70	13600
20	36	11600	58	11400	64	11000
25	4	6425	46	9125	57	8925
30			34	7325	50	7325
38			3	4025	39	5925
40					30	5925
46					3	2525
50						27
56						3
60						
66						
	700	500	400	325	250	200

NOTE: RATINGS ABOVE THE YELLOW LINE ARE BASED ON STRUCTURAL COMPLIANCE AND NOT ON MACHINE STABILITY.

**JIB CAPACITIES FOR ALL BOOM LENGTHS**

CAPACITY ALERT SYSTEM, IF SO EQUIPPED, IS NOT FUNCTIONAL WHEN LIFTING	40'	45'	50'	55'	60'	65'	70'
RETRACTED 26 FT JIB	525	625	1025	1425	2125	2825	3625
EXTENDED 44 FT JIB	SEE NOTE 5			825	1025	1325	1725

1 PART LINE	2 PART LINE	3 PART LINE	4 PART LINE
LOADS UP TO: 8400 LBS STD. CABLE	LOADS UP TO: 16,800 LBS STD. CABLE	LOADS UP TO: 25,200 LBS STD. CABLE	LOADS UP TO: 33,600 LBS STD. CABLE
5,700 LBS ROT. RESIST. CABLE	11,400 LBS ROT. RESIST. CABLE	17,100 LBS ROT. RESIST. CABLE	22,800 LBS ROT. RESIST. CABLE

**CAUTION**  
 ANTI-TWO-BLOCK SYSTEM MUST BE IN GOOD OPERATING CONDITION BEFORE OPERATING CRANE. REFER TO OWNER'S MANUAL.  
 KEEP AT LEAST 3 WRAPS OF LOADLINE ON DRUM AT ALL TIMES.  
 USE ONLY 3/16" DIAMETER CABLE WITH 33,600 LB. BREAKING STRENGTH ON THIS MACHINE.

- THE OPERATOR MUST READ AND UNDERSTAND THE OWNER'S MANUAL BEFORE OPERATING.
  - POSITIONING OR OPERATION OF CRANE BEYOND AREAS SHOWN ON THIS CHART IS NOT IN APPROVED EXCEPT WHERE SPECIFIED IN OWNER'S MANUAL.
  - LOADED BOOM ANGLE AT SPECIFIED BOOM LENGTHS GIVE ONLY AN APPROXIMATION OF RADIUS. THE BOOM ANGLE BEFORE LOADING SHOULD BE GREATER TO ACCOUNT FOR SWAY. DO NOT EXCEED THE OPERATING RADIUS FOR RATED LOADS.
  - USE RATING OF NEXT LOWER BOOM FOR BOOM LENGTHS NOT SHOWN. USE RATINGS OF RADIUS FOR LOAD RATES NOT SHOWN.
  - BOOM MUST BE FULLY RETRACTED WHEN JIB IS ERECTED BEFORE LOWERING BELOW MIN. RETRACTED JIB FOR 100% LIFTING CAPACITY BELOW A 50° BOOM ANGLE.
  - EXTENDED JIB HAS NO LIFTING CAPACITY BELOW A 50° BOOM ANGLE.
  - USE RATING OF NEXT LOWER BOOM ANGLE FOR BOOM ANGLE NOT SHOWN ON JIB LOAD CHART.
  - LIFTING OFF THE MAIN BOOM POST WHILE THE SWING AROUND JIB IS ERECTED IS NOT IN APPROVED.
  - CRANE LOAD RATINGS ON OUTRIGGERS ARE BASED ON FREELY SURFACED LOADS WITH LEVEL ED AND STANDING ON A FIRM UNIFORM SUPPORTING SURFACE. NO ATTEMPT SHALL BE MADE A LOAD HORIZONTALLY ON THE GROUND IN ANY DIRECTION.
  - PRACTICAL WORKING LOADS DEPEND ON SUPPORTING SURFACE, WIND AND OTHER FACTORS SUCH AS HAZARDOUS SURROUNDINGS, EXPERIENCE OF PERSONNEL, AND PRudence. ALL BE TAKEN INTO ACCOUNT BY THE OPERATOR.
  - THE MAXIMUM LOAD WHICH MAY BE TELESCOPED IS LIMITED BY HYDRAULIC PRESSURE AND BOOM LUBRICATION. IT IS SAFE TO ATTEMPT TO TELESCOPE ANY LOAD WITHIN THE LOAD RATING CHART.
- INFORMATION**
- DEDUCTIONS MUST BE MADE FROM RATED LOADS FOR STOWED JIB, OPTIONAL ATTACHMENTS AND LOADLOCKS (SEE DEDUCTION CHART). WEIGHTS OF SLINGS AND OTHER LOAD HANGING DEVICES SHALL BE CONSIDERED A PART OF THE LOAD.
  - CRANE LOAD RATINGS WITH OUTRIGGERS ARE BASED ON OUTRIGGERS AND STABILIZER AND SET WITH ALL LOAD REMOVED FROM THE CARRIER WHEELS.
  - LOAD RATINGS DO NOT EXCEED 85% OF TIPPING LOAD.
- DEFINITIONS**
- OPERATING RADIUS IS THE HORIZONTAL DISTANCE FROM THE AXIS OF ROTATION TO THE



# Terex Cranes

OLATHE, KANSAS 66061

U.S. PATENT NOS. 4211332, 4459786, 5012939

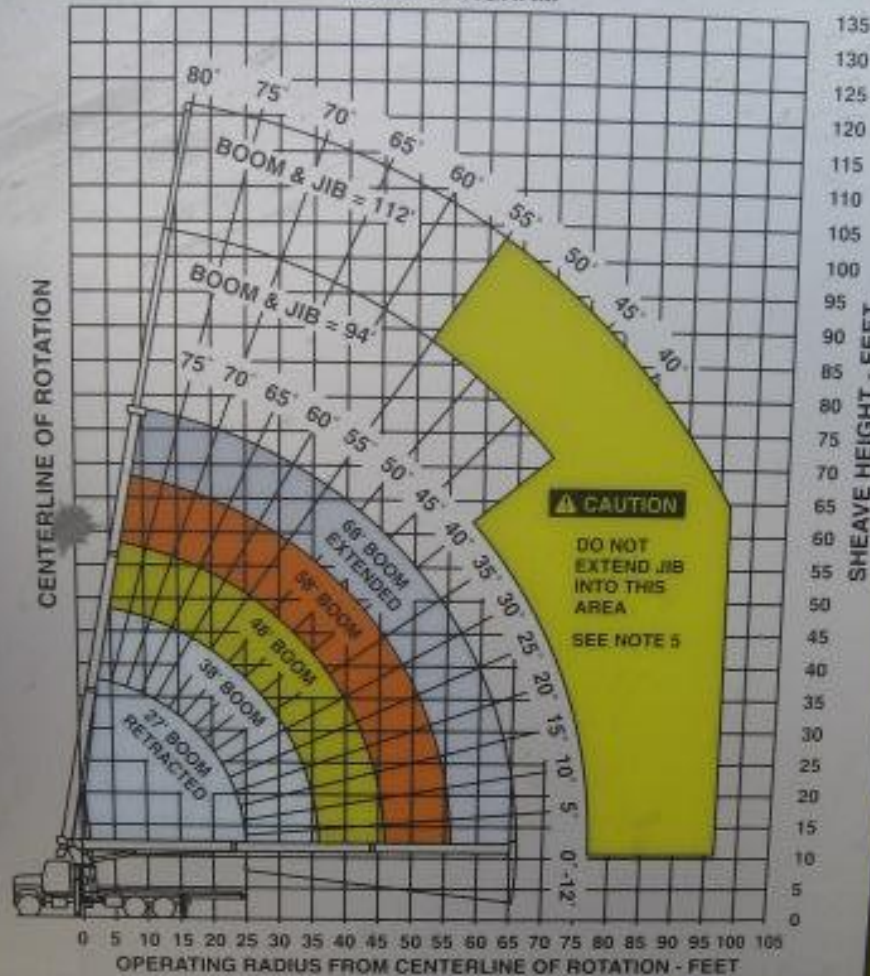
## MODEL TC-3468N

### MAXIMUM LOAD CHART

CANADA PAT. NO. 1097265

ECA

#### RANGE DIAGRAM



OMP	
PA	
ED	
RI	
AU	
TS	
11	
N	
PT	
GT	
5	77
8	70
10	65
12	60
14	55
16	49
20	36
25	4
30	
36	
40	
46	
50	
56	
60	
66	
	700

1 PART LINE	2 PART LINE	3 PART LINE	4 PART LINE
OVERHAUL BALL	ONE SHEAVE LOAD BLOCK	ONE SHEAVE LOAD BLOCK	TWO SHEAVE LOAD BLOCK
LOADS UP TO	LOADS UP TO	LOADS UP TO	LOADS UP TO
8,495 LBS. STD. CABLE	15,332 LBS. STD. CABLE	28,500 LBS. STD. CABLE	30,495 LBS. STD. CABLE
6,729 LBS. ROT. RESIST. CABLE	13,440 LBS. ROT. RESIST. CABLE	25,160 LBS. ROT. RESIST. CABLE	26,980 LBS. ROT. RESIST. CABLE

**CAUTION**

ANTI-TWO-BLOCK SYSTEM MUST BE IN GOOD OPERATING CONDITION BEFORE OPERATING CRANE. REFER TO OWNER'S MANUAL.

KEEP AT LEAST 3 WRAPS OF LOADLINE ON DRUM AT ALL TIMES.

USE ONLY 3/4" DIAMETER CABLE WITH 32,500 LB BREAKING STRENGTH ON THIS MACHINE.

**CAPACITY**

LOADED & EXTENDED

RETRACTED

EXTENDED

1. THE OPERATOR MUST BE POSITIONED IN AN APPROVED POSITION.
2. THE CRANE MUST BE ON A LEVEL SURFACE.
3. THE CRANE MUST BE LOADED WITHIN THE RATED CAPACITY.
4. DO NOT EXCEED THE RATED CAPACITY.
5. USE RATING REDUCED FOR WINDS.
6. CRANE MUST BE RETRACTED FOR EXTENDED USE.
7. USE RATING REDUCED FOR EXTENDED USE.
8. LIFTING OFF OR APPROXIMATE CRANE LOAD LEVELS AND ABOVE A LOAD MUST ALL BE WITHIN THE RATED CAPACITY AND BOOM AT THE LOAD RADIUS.

**INFORMATION**

1. DEDUCTIONS AND LOADS TO BE MADE.
2. CRANE LOAD RADIUS AND SET WITH LOAD RADIUS.

**DEFINITIONS**

1. OPERATING RADIUS - THE HORIZONTAL DISTANCE FROM THE CENTERLINE OF ROTATION TO THE CENTER OF THE LOAD.
2. LOADED BOOM - THE BOOM WITH THE LOAD ATTACHED.

THIS MACHINE COMPLIES WITH OSHA REGULATIONS 1910.186 AND 1918.506 WHERE APPLICABLE AT DATE OF MANUFACTURE.

5-224-00220