

3800 Series

STINGER 3874

3874 Capacity and Range Chart:

OPERATING WEIGHT	LOAD RATINGS IN LBS. WITH OUTRIGGERS EXTENDED					
	29 FT BOOM	40 FT BOOM	51 FT BOOM	62 FT BOOM	74 FT BOOM	74 FT BOOM
5	38000					
8	27150	24800				
10	22950	20950	20275			
12	19900	18050	17400	15150		
14	17550	15850	15250	13150	12500	
16	15650	14150	13550	11650	11350	
20	12650	11550	11050	9425	9125	
24	9950	9700	9325	7825	7625	
27	6225	45 8525	57 8325	63 6925	59 6725	
30		38 7525	53 7425	60 6225	56 5925	
34		27 6125	47 6425	56 5325	52 5225	
38		3 3425	40 5525	51 4725	59 4525	
43			30 4125	45 3925	54 3825	
49			3 2125	36 3125	48 3225	
55				24 2325	41 2625	
60				4 1125	34 2125	
65					39 1625	
70					15 1025	

JIB CAPACITIES FOR ALL BOOM LENGTHS							
CAPACITY ALERT SYSTEM, IF SO EQUIPPED, IS NOT FUNCTIONAL WHEN LIFTING WITH JIB							
LOADED BOOM ANGLE	50°	55°	60°	65°	70°	75°	78°
RETRACTED 26 FT JIB	625	825	1125	1625	2325	3125	4025
EXTENDED 44 FT JIB	425	625	925	1225	1625	2325	2825

NOTE: Please consult the Terex Cranes full-line brochure for a complete listing of standard features and optional equipment.

3874 Optional Mounting Configurations:

Behind Cab (TC)
Rear Mount (RM)
Pedestal Mount (PM)

(Some standard features for the optional mounting configurations will vary. Please consult your Terex Cranes dealer or factory for chassis and mounting requirements.)

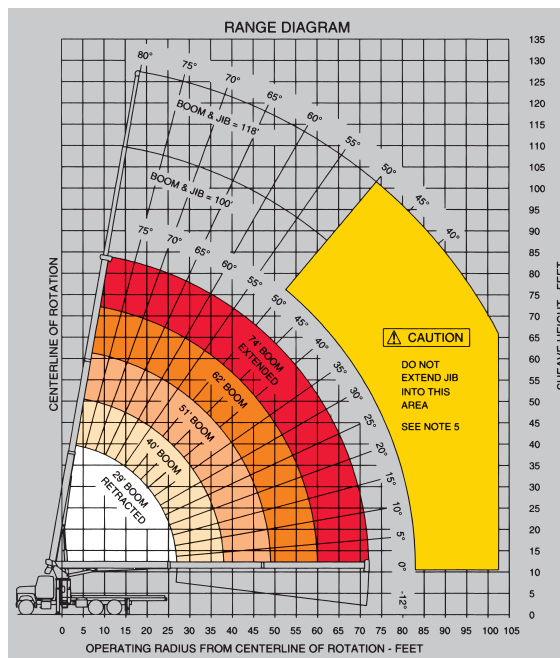
TC 3874 Minimum Chassis Requirements:

Chassis specifications are minimum for truck-crane mount. Not applicable to optional mounting configurations.

- Gross Vehicle Weight Rating50,000 lbs. (22,680 kg)
- Front Axle Weight Rating.....18,000 lbs. (8,165 kg)
- Rear Axle Weight Rating34,000 lbs. (15,422 kg)
- Wheelbase246 in. (6,248 mm)
- Cab to Axle.....168 in. (4,267 mm)
- Afterframe.....90 in. (2,286 mm)
- Transmission.....Heavy-Duty (Neutral lock-up required for automatic transmission)
- Electrical System.....Heavy-Duty
- Cooling System.....Heavy-Duty
- Frame Section Modulus.....26.0 in³ (426 cm³)
- RBM Per Frame Rail2,860,000 in./lbs. (32,951 kg-m)

Rope and Reeving:

1 PART LINE	2 PART LINE	3 PART LINE	4 PART LINE	CAUTION OVERLOAD AND ANTI-TWO-BLOCK SYSTEMS MUST BE IN GOOD OPERATING CONDITION BEFORE OPERATING CRANE. REFER TO OWNER'S MANUAL. KEEP AT LEAST 3 WRAPS OF LOADLINE ON DRUM AT ALL TIMES. USE ONLY 3/16" DIAMETER CABLE WITH 33,600 LB. BREAKING STRENGTH ON THIS MACHINE.
LOADS UP TO 7,460 LBS. STD. CABLE 6,720 LBS. ROV, RESIST. CABLE	LOADS UP TO 19,200 LBS. STD. CABLE 13,440 LBS. ROV, RESIST. CABLE	LOADS UP TO 28,800 LBS. STD. CABLE 20,160 LBS. ROV, RESIST. CABLE	LOADS UP TO 38,400 LBS. STD. CABLE 26,880 LBS. ROV, RESIST. CABLE	



NOTE: Diagrams depict recommended mounting dimensions. The dimensions of optional pedestal and rear mounts will vary. Please consult your dealer or Terex Cranes for specifics. Dimensions do not include load deflection.

