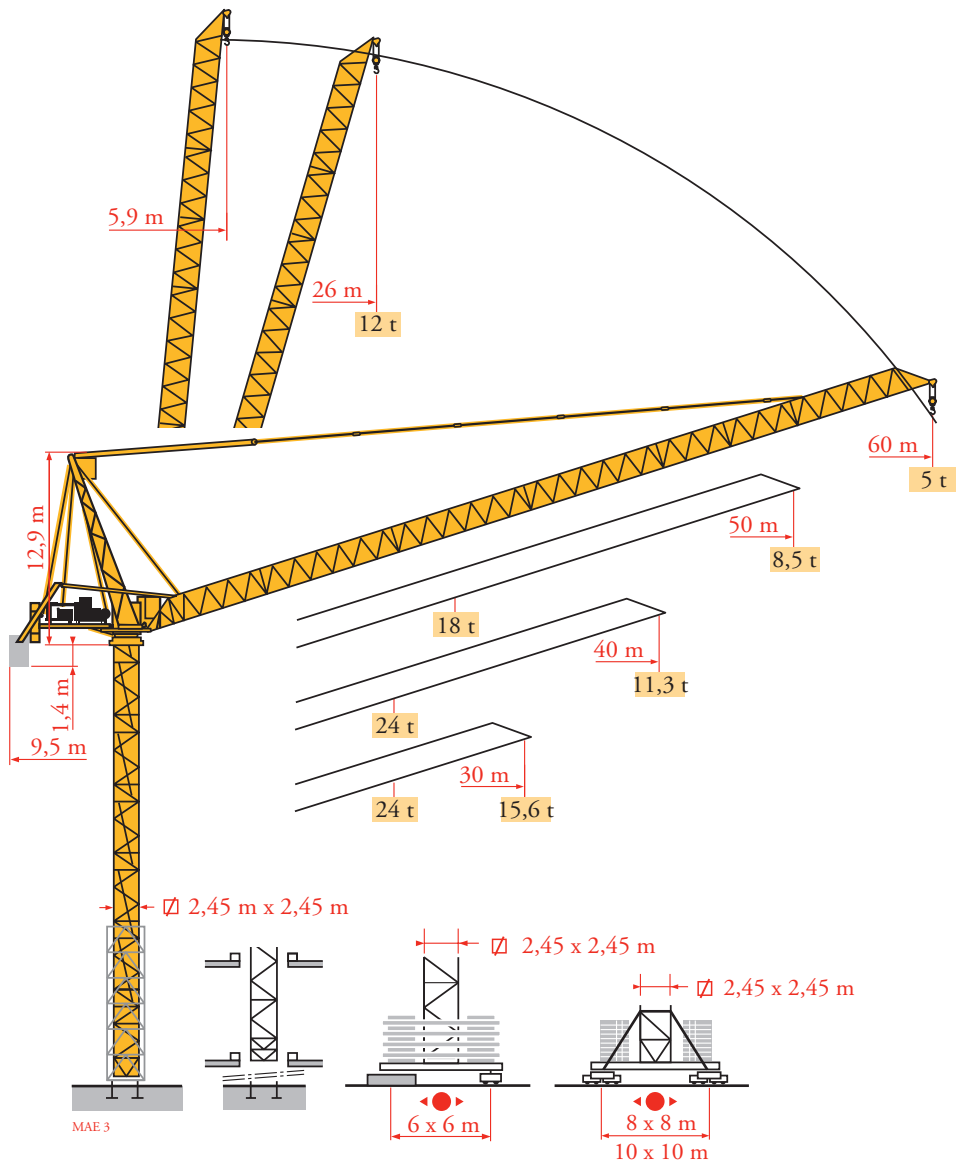


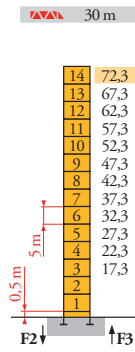
Potain MR 415 H24



Mat / Réactions
 Maste / Eckdrücke
 Masts / Reacciones
 Mástil / Reacciones
 Torre / Reazioni
 Tramo / Reacções
 Композиции башни /
 Реакции

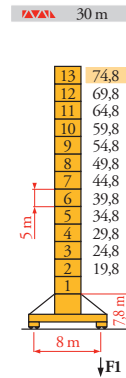
MAE 6

2,45 m
 30 m = 60 m



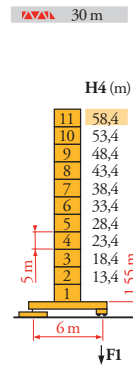
H (m)	5 m	3,33 m
30 m	72,3	14 -
40 m	69	12 -
50 m	64	11 2
60 m	59	10 2

P 800 A
 F2 ● 227 t
 ■ 360 t
 F3 ● 153 t
 ■ 292 t
 ■ 104 t



H (m)	5 m	3,33 m
30 m	74,8	13 -
40 m	69,8	12 -
50 m	66,4	10 2
60 m	61,4	9 2

Y 800 A
 F1 ● 160 t
 ■ 202 t
 ■ 138 t



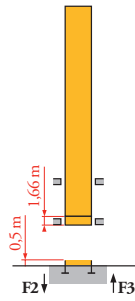
H4 (m)	H3 (m)	5 m	3,33 m
30 m	58,4	-	11 -
40 m	53,4	53,7	10 -
50 m	51,7	-	8 2
60 m	48,4	48,7	9 1
	-	45,3	9 -
			7 2

ZX 6830
 F1 ● 147 t
 ■ 177 t
 ■ 106 t

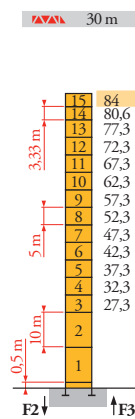
ZX 6830

3 F1 H = H3

4 F1 H = H4

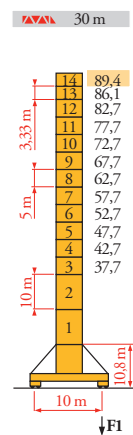


B 800 B
 i



H (m)	10 m	5 m	3,33 m
30 m	84	2	11 2
40 m	80,6	2	11 1
50 m	75,6	2	10 1
60 m	70,6	2	9 1

P 850 A
 F2 ● 274 t
 ■ 505 t
 F3 ● 184 t
 ■ 423 t
 ■ 120 t



H (m)	10 m	5 m	3,33 m
30 m	89,4	2	10 2
40 m	86,1	2	10 1
50 m	82,7	2	10 -
60 m	79,4	2	8 2

J 850 A
 F1 ● 172 t
 ■ 252 t
 ■ 173 t

FR

- Réactions en service
- Réactions hors service
- A vide sans lest (ni train de transport) avec flèche et hauteur maximum
- i Nous consulter

DE

- Reaktionskräfte in Betrieb
- Reaktionskräfte außer Betrieb
- Ohne Last, Ballast (und Transportachse), mit Maximalausleger und Maximalhöhe
- Auf Anfrage

EN

- Reactions in service
- Reactions out of service
- Without load, ballast (or transport axles), with maximum jib and maximum height
- Consult us

ES

- Reacciones en servicio
- Reacciones fuera de servicio
- Sin carga, sin lastre, (ni tren de transporte), flecha y altura máxima
- Consultarnos

IT

- Reazioni in servizio
- Reazioni fuori servizio
- A vuoto, senza zavorra (ne assali di trasporto) con braccio massimo e altezza massima
- Consultateci

PT

- Reacções em serviço
- Reacções fora de serviço
- Sem carga (nem trem de transporte)- sem lastro com lança e altura máximas
- Consultar-nos

RU

- Реакции при работе
- Реакции в покое
- Вес без груза, балласта (или транспортных осей), с максимальной длиной стрелы и максимальной высотой
- Проконсультируйтесь у нас

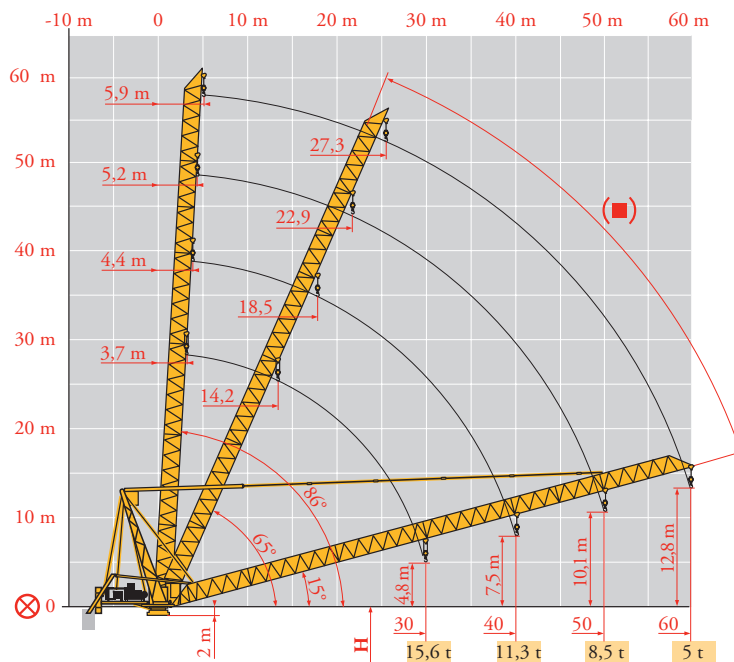
Courbes de charges
 Lastkurven
 Load diagrams
 Curvas de cargas
 Curve di carico
 Curva de cargas
 Диаграммы
 грузоподъемностей

MAE 3

60 m	5,9 ▶					26	28	30	35	40	45	50	55	60 m
▼	▼	12 11,4 10,6 9 7,8 6,9 6,1 5,5 5 t												
50 m	5,2 ▶	23,6	24	25	26	28	30	35	36,1	40	45	50 m		
▼	▼	18 17,7 17 16,3 15 13,9 11,8 - 10,2 8,9 7,9 t												
	▼	12 10,8 9,5 8,5 t												
40 m	4,4 ▶	18,8	20	22	24	25	26	28	30	35	37,8	40 m		
▼	▼	24 22,6 20,4 18,6 17,8 17,1 15,8 14,7 12,4 - 10,7 t												
	▼	12 11,3 t												
30 m	3,7 ▶	20	22	24	25	26	28	30 m						
▼	▼	24 21,7 19,8 19 18,2 16,8 15,6 t												
	▼	12 t												

Flèche relevée
 Ausleger in Steilstellung
 Luffing jib
 Flecha izada
 Braccio impennato
 Lança inclinada
 Маховая стрела

MAE 3



- | | | | | | | | |
|---|--------------------------------------|-----------------------------------|------------------------------|---|------------------------------------|---|---------------------------------|
| ⊗ | FR
Axe articulation flèche | DE
Ausleger-gelenkachse | EN
Jib hinge shaft | ES
Eje articulación de flecha | IT
Asse cerniera braccio | PT
Eixo de articulação da lança | RU
Ось шарнира стрелы |
| ■ | Position girouette | Windfreistellung | Weathervaning position | Posición eleta | Libera rotazione | Posição em catavento | Флюгирование |

Mécanismes
Antriebe
Mechanisms
Mecanismos
Meccanismi
Mecanismos
Механизмы

MAE 6

MR 415 H24 - 50 Hz			↓				↑				ch - PS hp	kW			
	180 LBR 120 L 580	m/min	5,3/53	8,4/84	13,5/135	21,4/214	2,6/26	4,2/42	6,7/67	10,7/107	180	132	580 m		
		τ	12	7,3	4,3	2,35	24	15	8,9	5					
	124 VBR	τ/min U/min - rpm	1 min 31 s										125	90	
	R - 8,8	m/min	0 0,67										2 x 6	2 x 4,4	
	Y 800 A RT584 A1 - 2V	m/min	13,5 - 27										8 x 7	8 x 5,2	
	J 850 A														
	ZX 6830 RT 664 A2B - 2V	m/min	16 - 32										6 x 7	6 x 5,2	
CEI 38		400 V (+6% -10%)			300 kVA										

MR 415 H24 - 60 Hz			↓				↑				ch - PS hp	kW			
	215 LBR 120 L 580	m/min	6,3/63	10/100	16/162	26/256	3,1/31	5/50	8/81	13/128	215	158	580 m		
		τ	12	7,3	4,3	2,35	24	15	8,9	5					
	150 VBR	τ/min U/min - rpm	1 min 16 s										148	108	
	R - 10,5	m/min	0 0,8										2 x 7,2	2 x 5,3	
	Y 800 A RT584 A1 - 2V	m/min	16 - 32										8 x 8,4	8 x 6,2	
	J 850 A														
	ZX 6830 RT 664 A2B - 2V	m/min	19 - 38										6 x 8,4	6 x 6,2	
CEI 38		480 V (+6% -10%)			350 kVA										

	FR	Levage		DE	Heben		EN	Hoisting		ES	Elevación		IT	Sollevamento		PT	Elevação		RU	Подъем
		Distribution			Katzfahren			Trolleying			Distribución			Distribuzione			Distribuição			Перемещение каретки
		Orientation			Schwenken			Slewing			Orientación			Rotazione			Rotação			Поворот
		Translation			Kranfahren			Travelling			Traslación			Traslazione			Translação			Перемещение крана



Document commercial non contractuel. Pour toute information technique se référer à la notice correspondante.

Unverbindliches Vertriebsdokument. Für technische Informationen, siehe die entsprechenden Anweisungen.

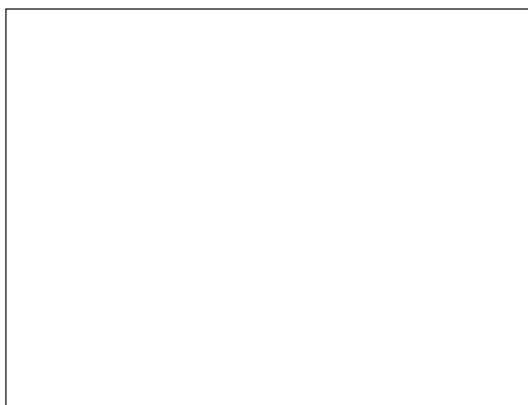
This commercial document is not legally binding. For any technical information, please refer to the corresponding instructions.

Documento commercial no contractual. Para cualquier información técnica, ver la noticia correspondiente.

Documento commerciale non vincolante, per tutte le informazioni tecniche fare riferimento al catalogo istruzioni.

Documento comercial não contratual. Para qualquer informação técnica complementar consultar as respectivas instruções.

Этот коммерческий документ не является юридически обязательным. Для получения технической информации, см. соответствующие инструкции.



Manitowoc - Americas - World Headquarters
2400 S. 44th Street • Manitowoc • WI 54220 USA
Tel: +1 920 684 4410 • Fax: +1 920 652 9778

Manitowoc - Europe, Middle East & Africa
Manitowoc France SAS
18, rue de Charbonnières B.P. 173 • 69132 ECULLY Cedex • FRANCE
Tel: +33 (0)4 72 18 20 20 • Fax: +33 (0)4 72 18 20 00

Manitowoc - Asia Pacific
16F Xu Hui Yuan Building,
1089 Zhongshan No.2 Road (S) • Shanghai 200030 China
Tel: +86 21 6457 0066 • Fax: +86 21 6457 4955

REF. 2003 49 MAE 7