



TEREX SS-842C

Rough Terrain Telescopic Boom Material Handler



FEATURES

- **8,000 lb. (3629 kg) capacity**
25 ft. (7.6 m) reach
42 ft. (12.8 m) of lift
- **Patented SQUARE SHOOT full load chart level traverse system optional**
- Smooth three section roller boom
- One high quality joy stick controller handles all boom and fork functions
- Self-leveling forks with no separate slave cylinder
- Fast, responsive high angle steering
- Pressure compensated on-demand hydraulics, 10 micron filtration
- Motion control valves in the lift, boom, fork and sway circuits
- Turbo-charged diesel engine, 3-speed Powershift transmission
- 4-wheel drive, 4-wheel (2-wheel & oblique) power steering
- Oil cooled totally enclosed service brakes
- Planetary axles front and rear, 1300 x 24 12-ply tires
- Front axle differential lock, rear axle lock up
- Removable gauge panel with surface-mounted breakers
- SAE O-ring or JIC hydraulic connections

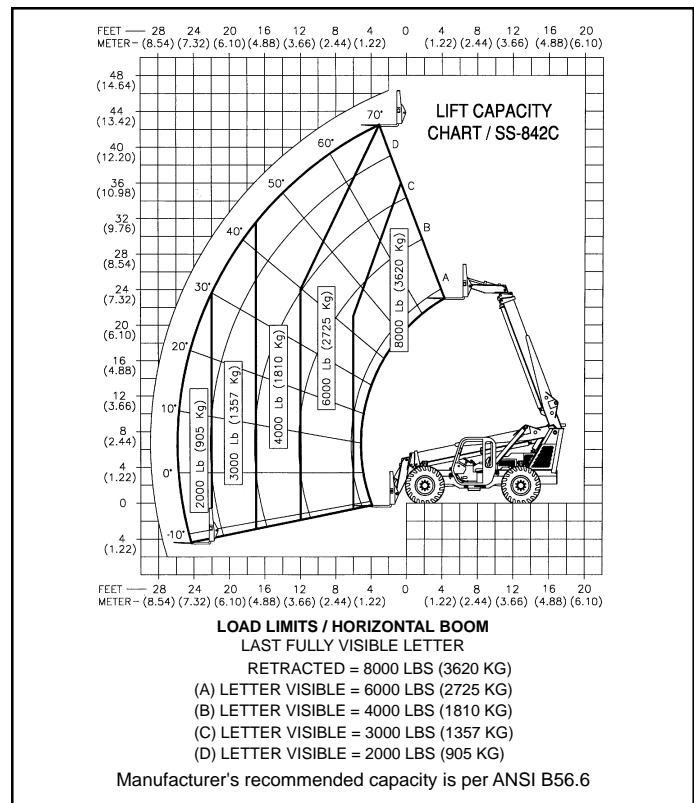
simple, available and
cost effective™

Machines shown may have optional equipment.

TEREX SS-842C SPECIFICATIONS

WEIGHTS with Boom retracted and down	
On Front Axle	8,100 lbs. (3680 kg)
On Rear Axle	13,980 lbs. (6340 kg)
TOTAL	22,080 lbs. (10 020 kg)
DIMENSIONS with Boom retracted and down	
Width OVERALL	8'2" (2.44 m)
Height OVERALL	9'1" (2.77 m)
Length OVERALL	24' (7.32 m)
Wheel Base	10'10" (3.30 m)
Ground Clearance	1'4" (.41 m)
Turning Radius (outside tire)	14'9" (4.50 m)
ENGINE	
Make	John Deere Turbo-charged
Model	4045T
Power	100 HP (74.6 kW)
RPM	2500
Fuel Tank Capacity	30 Gals. (113.6 L)
TRANSMISSION	
Powershift/Converter	3 Speed
BRAKES - Parking	
Type	Spring Applied/Hydraulic Release Disc
Location	Front Axle Input Shaft
BRAKES - Service	
Type	Enclosed, Hydraulic, Multiplate, Oil Cooled
Location	Internal
AXLES	
	Heavy Duty Steering Planetaries
WHEELS AND TIRES (Interchangeable)	
Wheels	Heavy Duty Drop Center
Tires - Calcium Chloride Solution Filled	1300 x 24 - 12 Ply
TRAVEL SPEEDS - Forward and Reverse	
First	3.2 MPH (5.1 km/hr)
Second	6.9 MPH (11.1 km/hr)
Third	17.2 MPH (27.7 km/hr)
STEERING	
Power Hydraulic Modes	Orbitrol 2 Wheel, 4 Wheel & Oblique
HYDRAULICS	
Single Pump (unloaded during engine start)	Axial Piston
Type	Flow on Demand
Filtration	10 Micron
Reservoir Capacity	34 Gals. (128.7 L)
SWAY CONTROL - Frame Leveling	
Type	Twin, Circuit Isolated, Cylinders
Range	10° Either Side of Center
EXTENSION BOOM	
	3 Section Roller
AUTOMATION	
Type	Hydromechanical
Operation	One Controller
Fork Function	Self-leveling Throughout Lift/Lower Cycles and No Separate Slave Cylinder
Traverse Function (Optional)	Level Traverse at any Boom Angle/Extension up to full Cylinder Stroke
FRAME STABILIZATION	
Type	Rear Axle Lock-up
Operation	Twin cylinders mounted between frame and axle actuated by stepping on service brake, shutting engine off, or 40° boom angle

For more information, product demonstration, or details on lease and rental plans, please contact your local Terex Handlers Distributor.



STANDARD EQUIPMENT

Single controller for all boom and fork functions • Heavy duty 3 section boom • Self-leveling fork frame • 2" x 5" x 48" (5.1 cm x 12.7 cm x 1.22 m) forks • Motion control valves in the lift, fork, extend and frame leveling circuits • Pilot operated on-demand hydraulics • 10 micron return hydraulic filter • 100 HP John Deere Turbo-charged engine • Dry type air cleaner • Dirt and water fuel filtration • 31.5 (1,000 CCA @ 0°F) battery • 95 AMP alternator • 3 speed powershift transmission with a service brake operated clutch cut off • 2 heavy duty steering planetary axles • 4 wheel (2 wheel & oblique) power steering • 1300 x 24 12-ply tires • SAHR parking brake • Enclosed multiplate oil-cooled service brakes/accumulator backup • 10° either side of center frame leveling with indicator • Lockable fuel and hydraulic tank caps • Hourmeter • Removable gauge panel with surface-mounted breakers • Gauges for: fuel level, transmission oil temperature, transmission clutch pressure, engine oil pressure, engine coolant temperature and electrical system voltage • Keyed start switch • Adjustable upholstered seat with seat belt • Back up alarm and rear view mirror • Hydraulic pressure connections are SAE O-ring or JIC • Pins are hardened and ground, bushings are of high compressive strength material • Hardware is grade 8 • Front axle differential lock • Rear axle lock for stability • ISO mounted canopy

OPTIONAL EQUIPMENT

Hydromechanical Level Traverse System • Fully enclosed cab • Heater • Defroster fan • Wiper • Turn signal & hazard flasher package • Cubing tines • Rubbish bucket (1 yard) • 60" and 72" (1.52 m and 1.83 m) pallet forks • 60" - 72" (1.52 m - 1.83 m) wide fork frame • Lights: Headlights, brake, tail, rear flood and strobe • Foam-filled tires • Rotating fork frame 48", 60", and 72" (1.22 m, 1.52 m, and 1.83 m) • Variable reach truss boom • Cummins B3.9 C-100 Turbo-charged diesel engine • Quik-Switch Attachment • Suspension seat • Front window with or without guard • Ether aid

We reserve the right to amend these specifications at any time without notice. The only warranty applicable is our standard written warranty applicable to the particular product and sale. We make no other warranty, expressed or implied.

 **TEREX HANDLERS**

455 N. Superior Ave./ P.O. Box 248
Baraga, MI 49908-0248 USA
(906) 353-6675 • FAX: (906) 353-7543
E-mail: baraga@terexlifting.com

www.terexlift.com