

# ETO 40 MH

Overcenter material handler



## Insulated Power



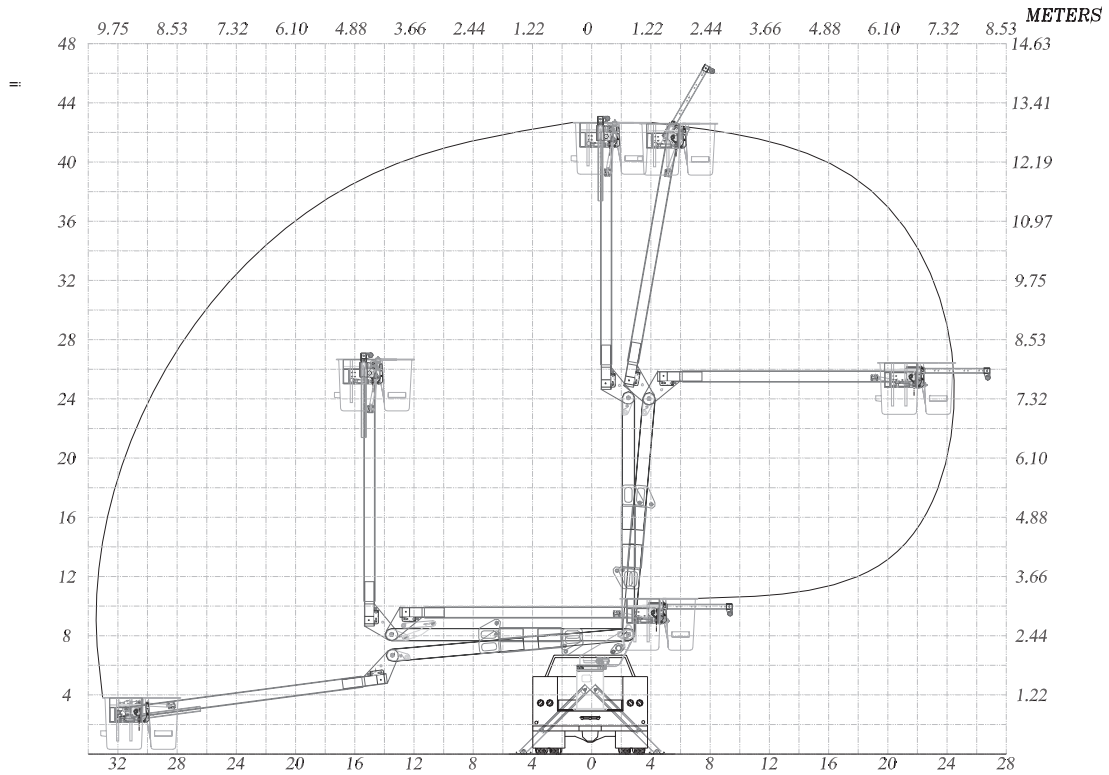
The ETO 40 MH is an articulating material handler that is a powerful insulated unit with a host of standard and optional features to satisfy the needs of our customers. With a working height of 45 feet, this unit offers continuous rotation, full pressure hydraulic controls, two sets of outriggers and a 400 pound bucket capacity as standard features. This model also offers powerful material handling capabilities with a hydraulic winch and a 5' jib that can lift up to 1,000 lbs. A hydraulic jib extension, outrigger/boom interlock or emergency hydraulic power are among the many options available.

**ETI**  
A PALFINGER Company

Equipment Technology LLC is a full service solution provider of the highest quality design, manufacturing, and post sale service.

Equipment Technology LLC  
 341 NW 122nd  
 Oklahoma City, OK 73114  
 Toll-Free: 1-888-748-3841  
 Fax: 1-405-755-6829  
 www.eti1.com

**ETO 40 MH**



**General Specifications\***

Height to bottom of bucket	39 ft. - 7 in.
Working height	44 ft. - 7 in.
Side reach, End mount	33 ft. - 4 in.
Stowed height	10 ft. - 8 in.
Rated bucket capacity	400 lbs.

**Minimum Vehicle Specificaitons**

• GVWR (with Dual Rear Wheels)	15,000 lbs.
• GAWR (front)	6,000 lbs.
• GAWR (rear)	13,500 lbs.
• C.A.	84 in.

**Standard Features**

- Continuous rotation is standard on all ETO MH units.
- Full pressure hydraulic controls located at basket and turret with full feathering capabilities from both upper and lower controls.
- Positive chain and rod leveling based on parallelogram system ensuring long life and minimum leveling system maintenance.
- Shear ball rotation with an extended shaft for manual rotation.
- Internally mounted holding valves (integral part of cylinder) lock cylinders in place in the event of hydraulic failure.
- All pins turn on replaceable bushings.

- 90 degree bucket rotator.
- Single handle upper control.
- Lower boom fiberglass insert.
- Hydraulic winch and 5 ft. jib - up to 1,000 lbs. material handling capacity.
- 24" x 30" basket.
- 2 sets outriggers.
- 400 lbs. bucket capacity.

**Options**

- Emergency hydraulic power (12VDC)
- Engine start/stop at bucket
- Hydraulic tool circuit
- Two speed throttle
- Bucket tilt/rescue
- 69 KV Rating - Category B
- Bucket liner
- Bucket cover
- Hydraulic extend jib
- Outrigger/boom interlock
- Single set outrigger



Specifications are subject to change without notice  
 ETI manufactured equipment meets or exceeds OSHA, ANSI 92.2 and FMVSS standards at time of manufacture.  
 Note (\*): All specifications based on a 36" frame height  
 www.eti1.com