



# ET30KX

## FEATURES

- \* 5,000 lb. Maximum Lifting Capacity
- \* 30,000 ft.-lb. Moment Rating
- \* Electric-Hydraulic Power
- \* Hexagonal Boom Construction
- \* 10'-20' Boom (6' powered, 4' manual extension)
- \* High Efficiency Planetary Winch
- \* Continuous Power Rotation
- \* Load-Holding Counterbalance on All Cylinders
- \* Meets ANSI B30.5 Safety Standards
- \* Meets OSHA 1910.180 Requirements

## STANDARD EQUIPMENT

- \* Capacity Overload Shut-Off System
- \* Anti-Two-Blocking System
- \* 80 ft. of 5/16" Aircraft-Quality Wire Rope
- \* Remote Control Pendant: 25 ft. Cord and Quick Disconnect
- \* Snatch Block with Swivel Hook Safety Latch
- \* Master Disconnect Switch
- \* Battery Cable: 25 ft.

## MINIMUM REQUIREMENTS

- \* 11,000 lb. GVWR Chassis
- \* Outriggers: Rear
- \* Electric Power Source: 12V DC

LIFTING CAPACITIES	
REACH (FT.)	CAPACITY (LBS.)
6	5,000
10	3,000
16	1,875
20	1,500

## OPTIONAL EQUIPMENT

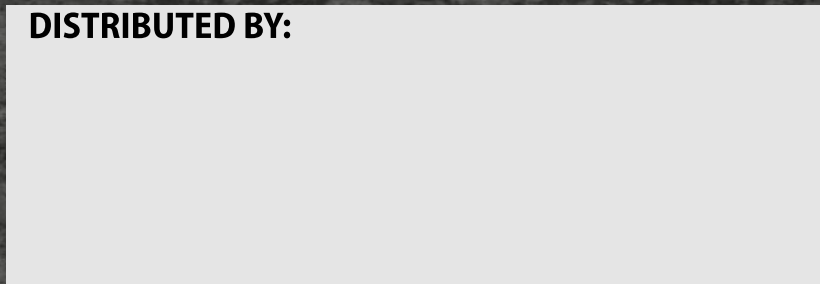
- \* Radio Remote Controls
- \* Electric-Hydraulic and Manual Outrigger Packages
- \* Mounting Pedestal for Platform Bodies
- \* Boom Rests

Specifications subject to change without notice.

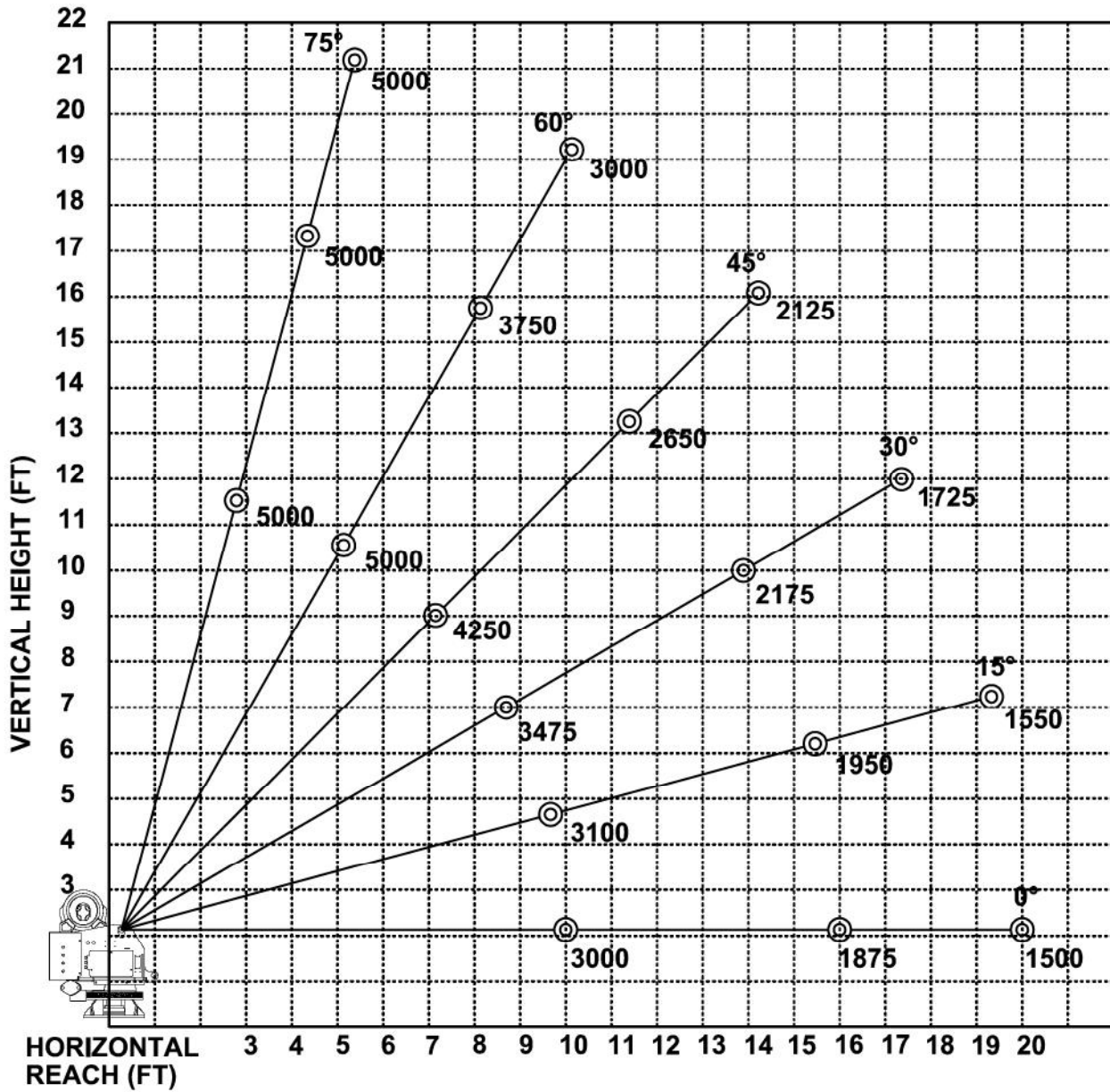


12110 Best Place Cincinnati, OH 45241  
 800-226-2238 internetsales@venturo.com  
[www.venturo.com](http://www.venturo.com)

DISTRIBUTED BY:



## ET30K(X) - 10-16-20 BOOM MAXIMUM CAPACITY CHART



**MUST USE SNATCH BLOCK  
FOR LOADS OF 2500 LBS.  
AND GREATER**