

<http://www.hydro-crane.com/>

KATO

**FULLY HYDRAULIC
TRUCK CRANE**

NK-600

Lifting Capacity **60t**



KATO WORKS CO., LTD.

KATO **NK-600**

FULLY-HYDRAULIC FULL-SLEWING TRUCK CRANE

Maximum lifting capacity: 60tons
Maximum boom length :51m(with jib)

POWERFUL NEW 60 tons Truck crane. Easily use it in large scale constructional work!
The KATO WORKS, CO., has many distinguished achievements of safety features and services in the technological developments of ALL truck cranes. Now, the NEW NK-600, 60 tons KATO truck crane includes the latest and easiest of safety operational functions from many years of research and experiences for your benefit and profits.
This NEWEST of 60 tons truck crane of an unprecedented unique design, has the newest hy-

draulic mechanism and a uniquely more safe and more comfortably designed structure for the operator's convenience and safety.
Its NEW POWERFULNESS is carefully blended with complete safety and superior functions that you will be proud to own and operate it. So, use this KATO wonderful and safe NK-600, 60 tons NEW powerful truck crane of improved efficiency and reap a profit. We are confident that it will fulfill your expectations!



SUPERSTRUCTURE SPECIFICATIONS

CRANE PERFORMANCE

Rated lifting capacities: 60t×3.5m(12m boom)
 40t×4.5m(18m boom)
 30t×5.2m(24m boom)
 22t×5.7m(30m boom)
 16t×8.0m(36m boom)
 6t×10 m(36m boom+9.5m Jib)
 4t×12 m(36m boom+15m Jib)

NOTE: Over side and rear with outriggers

$$\text{Stability} = \left(\frac{\text{Rated load}}{\text{Maximum allowable load}} \right) \times 100 = 78\%$$

CARRIER

Maximum traveling speed: 66.5km/h
 Gradeability (tan θ): 25.6% (computed, G.V.W.=51,500kg)
 Minimum turning radius: 13m

GENERAL DIMENSIONS

Overall length: approx. 14,080mm
 Overall width: approx. 2,750mm
 Overall height: approx. 3,900mm
 Wheel base: 5,750mm
 Treads: Front: 2,290mm
 Rear: 2,000mm
 Overall width with outriggers extended
 Center to center: 6,800mm
 Gross weight approx. 51,500kg

CRANE

Maximum rated lifting capacity: metric tons
 Boom length: 12m-36m(4 section fullpower)
 Fly jib length: 9.5m-15m (2 section)
 Boom derricking angle: -2°-80°
 Boom derricking time: 50sec. (-0°-80°) High
 100sec. (0°-80°) Low
 Boom telescoping speed
 Extension: 0.2m/sec.

Hoisting and lowering rope speed
 (Main and auxiliary winches): High 108m/min.
 Low 54m/min.

Hoisting and lowering hook speed
 Main winch (parts of line: 10): High 10.8m/min.
 Low 5.4m/min.

Auxiliary winch (parts of line: 1): High 108m/min.
 Low 54m/min.
 Slewing speed: 1.9r.p.m.

WIRE ROPE FOR HOISTING

Main hoist: Type: 6×F1(29)I.W.R.C.
 Diameter: 22mm ϕ
 Length: 200m
 Auxiliary hoist: Type: 6×F1(29)I.W.R.C.
 Diameter: 22mm ϕ
 Length: 115m

HYDRAULIC SYSTEM

Hydraulic pump: 3 section gear type
 Hoisting motor: Axial piston type
 Slewing motor: Radial piston type
 Cylinder: Double acting type
 Control valve: 3 position 4 way double acting with integral check, and relief valves

Fluid reservoir capacity: 800lit.
 Crane cab: All steel welded construction
 Safety devices: Outrigger lock device,
 Boom derricking safety device,
 Boom extending & retracting safety device,
 Over winding alarm device,
 Boom angle indicator,
 Hydraulic circuit safety valve(relief valve),
 ACS (automatic crane stopper),
 Drum speed indicator,
 Drum lock device,

CARRIER SPECIFICATIONS

CARRIER

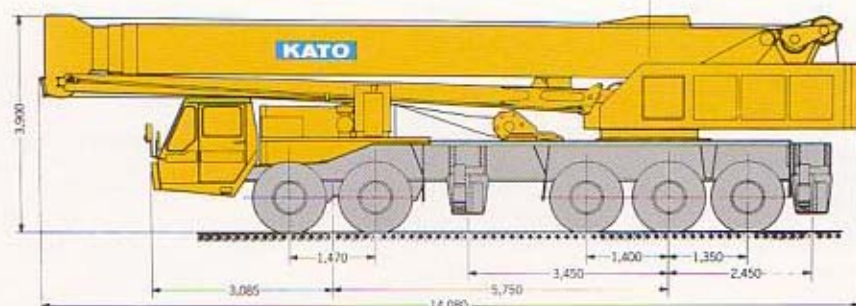
Maker: Mitsubishi Motors Corp.
 Model: K600L
 Drive system: 10×4
Engine
 Maker: Mitsubishi Motors Corp.
 Model: BDC80A
 Type: 4 cycle, water cooled, V type diesel
 Number of cylinder: 8
 Bore x stroke: 135mm×130mm
 Piston displacement: 14,886cc
 Max. output horsepower: 305PS/2,500r.p.m.
 Max. output torque: 104kg-m/1,200r.p.m.
 NOTE: The output is in accordance with JIS D1004, 1956.
 Rated power output guaranteed within 5% at standard ambient conditions.

Clutch: Single dry plate, hydraulic control with air booster
 Transmission: Synchromesh (3rd-10th) and constantmesh (1st 2nd & Rev.) gear
 Ratio:
 1st-8.256 6th-2.047
 2nd-6.111 7th-1.666
 3rd-4.550 8th-1.233
 4th-3.368 9th-1.000
 5th-2.765 10th-0.740
 Reverse 1st-8.105
 Reverse 2nd-6.000

Axles: Front: Reverse "ELLIOT" type.
 Rear: Fully floating type
 Steering: Left hand steering, Ball nut type with power booster
 Suspension: Front: Semi-elliptic leaf springs with shock absorber
 Rear: 1st: Hydro-Pneumatic Suspension
 2nd & 3rd: Equalizer beams and torque rods

Brake
 Service brake: 2 circuit air over hydraulic brake, acting on wheels, internal expanding type, Acting on 6 rear wheels, spring loaded brake, variable air operated, Exhaust brake.
 Emergency brake }
 Parking }

Auxiliary:
 Electric system: 24V
 Battery: 12V-120AH×2
 Fuel tank capacity: 300lit.
 Driver's cab: All steel welded construction, 2 persons, low line type
 Tire size: Front: 12.00-24-18PR
 Rear (dual tire): 12.00-24-18PR (2nd & 3rd)
 Rear (single tire): 12.00-24-18PR (1st)





KATO

**QUALITY & EXPERIENCE
SINCE 1895**

KATO WORKS CO.,LTD.

HEAD OFFICE:

No. 9-37, 1-chome, Higashi-ohi, Shinagawa-ku,
Tokyo, Japan
Tokyo 471-8111

Tel:

FOREIGN DEPARTMENT:

The 17th Mori Bldg., 1-26-5 Toranomon,
Minato-ku, Tokyo, Japan
Tokyo 591-5111

Tel:

Cable Address:

Telex:

CRANEKATO TOKYO
O 222-4519(CRKATO J)