

# LS-278H

## HYLAB Series

### Lattice Boom Crawler Crane 250-ton (227 mt)

- 250-ton (227 mt) at a 13' (3.96 m) radius
- 330' (100.58 m) maximum conventional boom length
- 400' (121.92 m) maximum boom and fixed jib
- 430' (131.06 m) maximum luffing boom and luffing jib\*
- Maximum tip height of 403' (122.83 m) for boom and fixed jib or 439' (133.81 m) luffing boom and luffing jib
- 340' (103.63 m), 360° maximum working radius (conventional boom + jib)
- Transport weight is less than 91,300 lbs (41 413 kg) with carbody, live mast and hoist ropes
- Lightweight modules allow maximum boom and fixed jib to transport on 10 loads
- Counterweight removal system with remote control for fast, simple self-assembly
- 440 hp (328 kW) Cummins engine
- Maximum winch line pull 50,103 lbs (22 726 kg)
- Maximum winch line speed 550 fpm (167 mpm)
- Sealed lower

\*preliminary

**Link-Belt**  
CONSTRUCTION EQUIPMENT





# LS-278H

## HYLAB Series

### Lattice Boom Crawler Crane 250-ton (227 mt)

- **Bullet-proof reliability**
- **Simple mobility**
- **Super versatility**
- **Big capacities**
- **Pin-point control**

**Link-Belt**  
CONSTRUCTION EQUIPMENT

100,000 psi main  
chord material

High strength lattice for luffer loads



Optional third hoist drum is mounted in boom base section.



Left: Each treadmember contains a compact travel system that provides independent steering and/or full counter-rotation.

Below left: Treadmembers are designed to accept lower counterweights for increased 360° capacities.

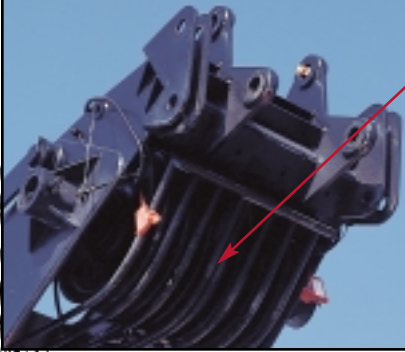
Below: Sealed, oil-filled track rollers, idler and drive planetaries and compact hydrostatic drives add up to outstanding reliability and maintenance-free operation.



With jacks extended, clearance is 37" (0.94 m) for easy load out.

Self-cleaning 50" (1.27 m) or 60" (1.52 m) track shoes form an extra wide lifting platform for reduced ground pressures





Head machinery includes six steel sheaves with sealed bearings

Repositional ladders, wide doors and catwalks provide easy access to the LS-278H.



The boom top section features standard pin-on points for a fixed jib or a tip extension.



All sheaves are sealed and maintenance-free, giving HYLAB owners outstanding reliability.



One 31,000 lb (14 061 kg) and eight 13,000 lb (5 896 kg) modular-designed counterweights for a total of 135,000 lbs (61 234 kg)

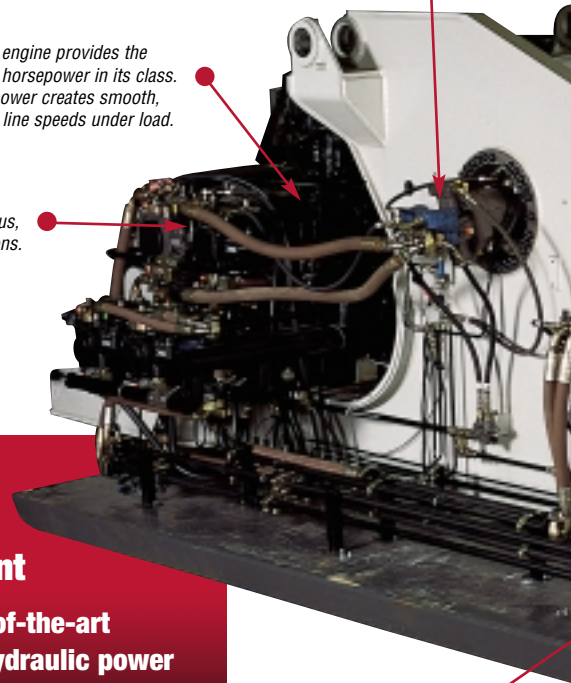
Non-slip safety strips and front, left & right side catwalks provide sure-footed access to the crane upper.

Components are pre-painted prior to assembly to ensure quality paint throughout the product.

All hoist motors are equipped with counterbalance valves to provide positive load lowering and to prevent accidental load drop.

A 440 horsepower engine provides the LS-278H the most horsepower in its class. This tremendous power creates smooth, reliable and higher line speeds under load.

Six variable displacement pumps and one fixed displacement pump allow simultaneous, smooth and precise operation of all functions.



The carbody is made of an all-welded, high strength, alloy steel with precision-machined surfaces for mating components.

## Bullet-proof hydraulics and a strong power plant

The HYLAB Series state-of-the-art variable displacement hydraulic power system features 100% all hydraulic power. All this has earned a job-proven reputation of bullet-proof reliability.

The simple, clean hydraulic plumbing powder-coated tubing and hoses with for ease of maintenance.



# Comfort and control at your fingertips

The HYLAB crane operations control center is ergonomically designed for maximum operating comfort and control. Features include:

- Swing-up roof window with wiper
- Sliding front glass
- Engine instrumentation panel
- Six-way adjustable seat
- Hand and foot throttle
- Hand and foot-operated boom hoist control
- Pilot-operated arm chair single-axis control levers
- Swing lever with swing brake and horn located on handle



## Operator's cab console features include:

1. Swing
2. Third drum
3. Front drum
4. Rear drum
5. Boom hoist (hand)
6. Foot throttle
7. Boom hoist (foot)
8. Left travel
9. Right travel

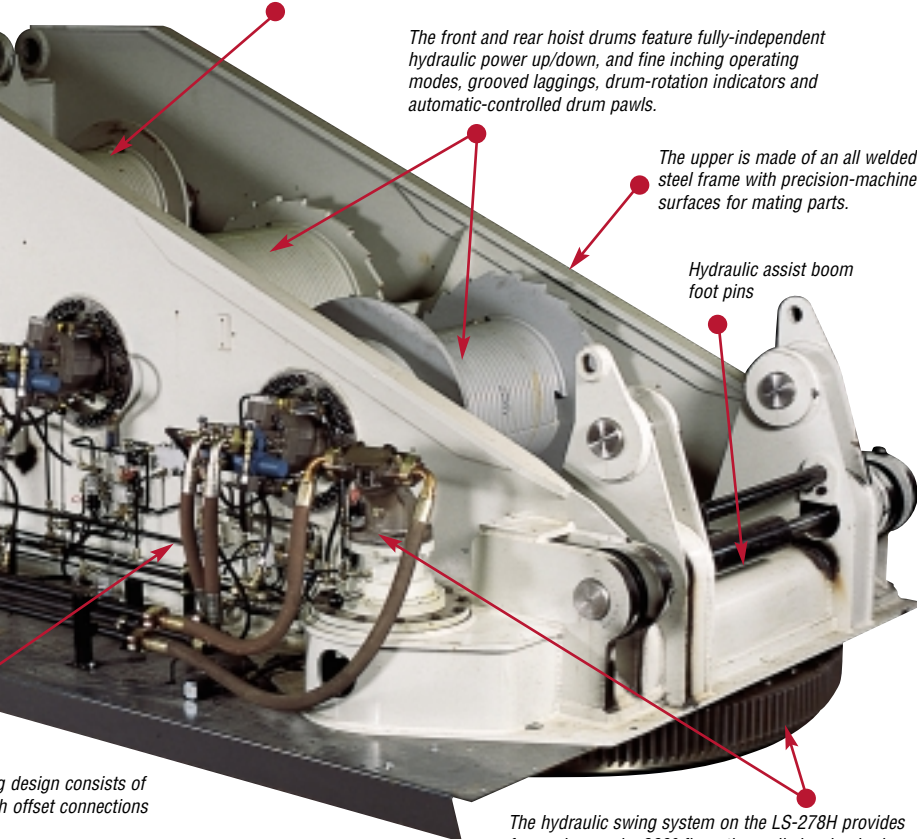


The boom hoist drum is designed to raise/lower all attachment configurations unassisted with smooth, precise control.

The front and rear hoist drums feature fully-independent hydraulic power up/down, and fine inching operating modes, grooved laggings, drum-rotation indicators and automatic-controlled drum pawls.

The upper is made of an all welded steel frame with precision-machined surfaces for mating parts.

Hydraulic assist boom foot pins



g design consists of  
h offset connections

The hydraulic swing system on the LS-278H provides free swing mode, 360° fingertip-applied swing brake or positive house lock and an audio/visual swing alarm.



The PAT DS-350 rated capacity limiter includes two lineriders, angle sensor, computer, graphics display and anti-two block equipment to provide:

- Graphic representation of machine configuration
- Graphical step-by-step machine set-up
- Boom length & angle
- Jib length & angle
- Load on hook
- Rated load
- Load radius
- Tip height
- Anti-two block warning & function limiters
- Operation mode
- Audio/visual warning when the load on hook is within 90% of the crane's rated load
- Audio/visual warning and limits functions when the load on hook is at 100% of the crane's rated load
- Operator settable alarms





**10 minutes per side**

*Machine assembly and disassembly can be obtained using the boom base section, 10' (3.05 m) self-erection section and three-legged sling.*

*Carbody includes a quick hitch that easily positions the treadmembers into place. Once the treadmember is positioned, hydraulically-powered pins automatically secure the treadmembers to the carbody.*

**5 minutes per side**

*The simple pick point design allows lower counterweights to swing into place firmly and hang on treadmembers.*



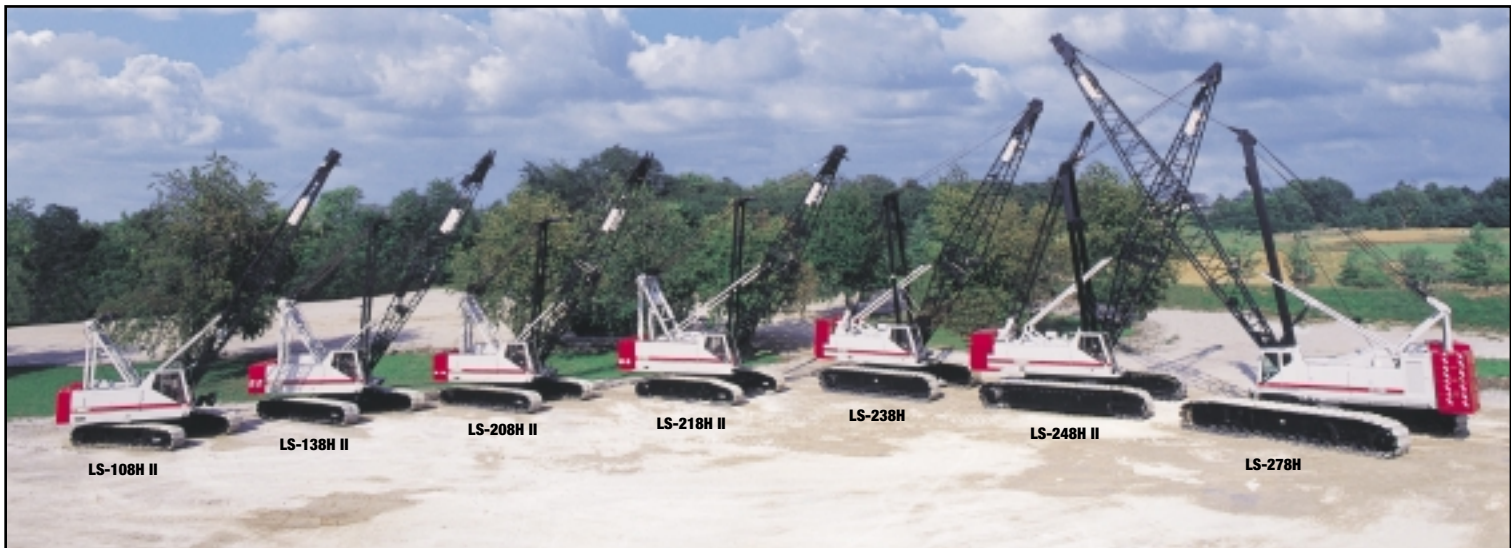
**Ready to stab boom in less than 50 minutes**

- 10 loads for maximum counterweight and 400' (121.92 m) of boom and jib
- Main load transport weight is 91,300 lbs (41 414 kg) or 98,900 lbs (44 861 kg) with boom base and 10' extension
- 7 loads for maximum counterweight and 160' (48.77 m) boom



**20 minutes**

*Hand-held remote controls make easy work of handling counterweight modules.*





The LS-278H luffing boom operates from 65° to 90° boom angles, can clear a 210' building or reach out to 290' (88.39 m) of radius.



## LS-278H attachments...strength and versatility

### Conventional open throat boom

- 330' (100.58 m) conventional boom
- Using pin-connected sections and open throat top section, the LS-278H provides the longest boom lengths in this machine class.
- Main chord members are made with 100,000 psi yield material with high strength lattice.
- Boom suspension is achieved through 18-part boom hoist reeving with dual pendant ropes.
- Standard equipment deflector rollers protect lattice sections from wire rope scuffing.

### Boom and fixed jib – open throat

- 300' + 100' (91.44 m + 30.48 m) boom + fixed jib
- Fixed jib is common with HC-278H fixed jib.

### Hammerhead top with auxiliary tip extension

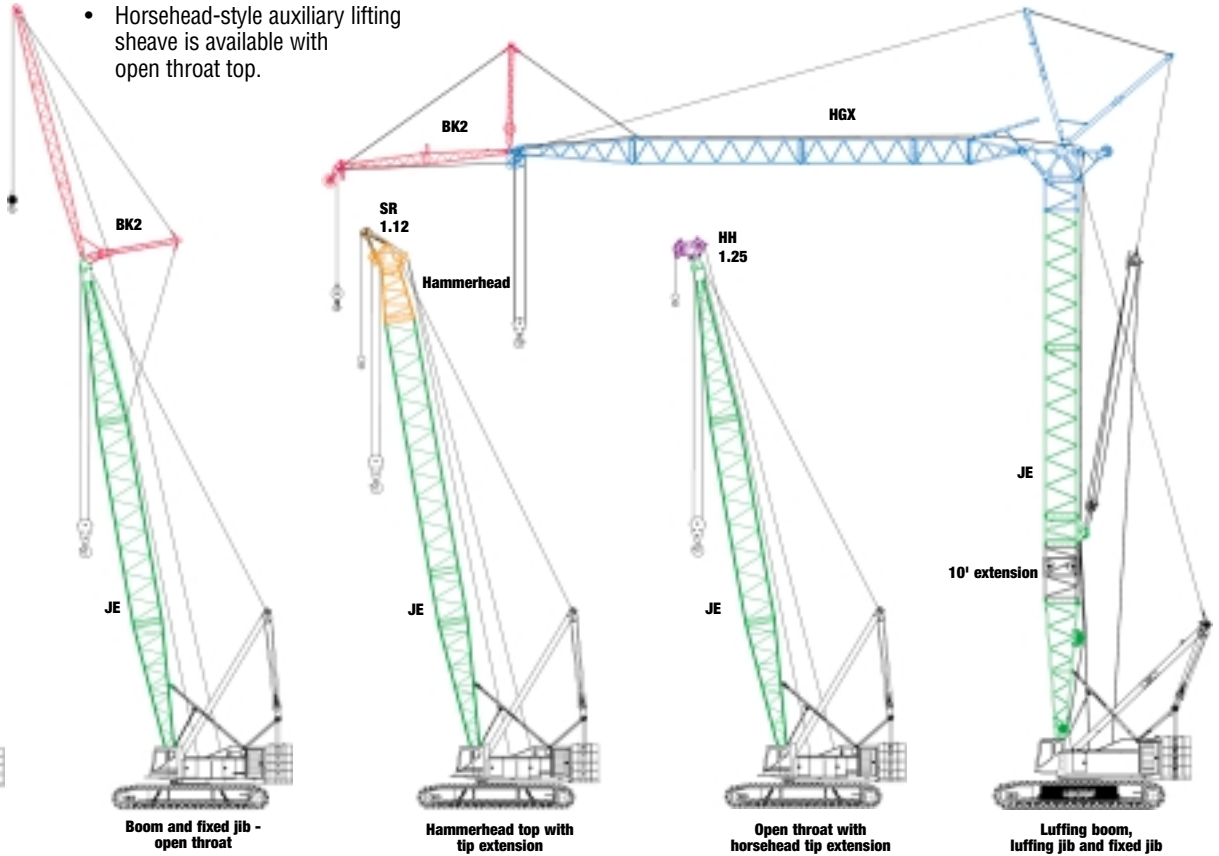
- 245' (74.68 m) hammerhead boom
- Hammerhead top section for greater load clearance with offset lifting sheaves
- Self-retracting tip extension is available.

### Open throat with horsehead tip extension

- Horsehead-style auxiliary lifting sheave is available with open throat top.

### Luffing boom attachment

- 200' + 230' (60.96 m + 70.1 m) luffing boom + luffing jib
- Conventional boom on LS-278H also serves as luffing boom.
- Luffing attachment for the LS-278H is the latest design with luffing jib reeving anchored off the luffing boom to keep reeving down low within operator's view, and is easy to assemble.
- Top section assembly of luffer transports as one piece and makes for fast, easy assembly to the luffing jib, which is common boom to the LS-218H II.
- This attachment flexibility and simplicity makes the LS-278H – conventional or with luffing attachment – the first machine of choice to go out of the yard and to the job!
- All boom sections are manufactured in Lexington, Kentucky for fast, easy service, parts and replacement.
- 10' self-assembly section – shown on luffing boom – is available for all configurations.



**Link-Belt Construction Equipment Company is a leader in the design, manufacture and sales of telescopic and lattice boom cranes, with headquarters in Lexington, Kentucky.**

In the recent decade, a dynamic and highly-focused Link-Belt has emerged as a market leader in crane design and product quality standards by focusing on continuous improvement and employee empowerment.

Link-Belt's core production base and center for worldwide operations is its 500,000 sq. ft. manufacturing facility in Lexington, Kentucky. With major expansions over the last ten years, along with continuous improvement philosophies, this facility has emerged as the most modern crane facility in North America.

© Link-Belt is a registered trademark. Copyright 2001. All rights reserved. We are constantly improving our products and therefore reserve the right to change designs and specifications.

Litho in U.S.A. 01/01 #4252

**Link-Belt**  
CONSTRUCTION EQUIPMENT



Lexington, Kentucky  
www.linkbelt.com