

**ARCOMET**

www.arcomet.com



LASTENTABEL - COURBES DE CHARGES - LOAD CURVES - LASTKURVEN - CURVE DI CARICO - CURVAS DE CARGAS

m	2,20 - 14,20	16	19	22	25	28	31	33	36	38	42
kg	4000	3480	2850	2390	2060	1800	1590	1480	1330	1250	1100
ft	7'3" - 46'7"	52'6"	62'4"	72'2"	82'0"	91'10"	101'8"	108'3"	118'1"	124'8"	137'10"
lbs	8820	7670	6280	5270	4540	3970	3510	3260	2930	2760	2430

m	2,20 - 14,70	16	19	22	25	28	31	33	36	38
kg	4000	3620	2960	2490	2140	1880	1660	1540	1390	1300
ft	7'3" - 48'3"	52'6"	62'4"	72'2"	82'0"	91'10"	101'8"	108'3"	118'1"	124'8"
lbs	8820	7980	6530	5490	4720	4150	3660	3400	3060	2870

m	2,20 - 15,50	16	19	22	25	28	31	33
kg	4000	3860	3150	2660	2290	2000	1780	1650
ft	7'3" - 50'10"	52'6"	62'4"	72'2"	82'0"	91'10"	101'8"	108'3"
lbs	8820	8510	6940	5860	5050	4410	3920	3640



m	2,20 - 25	28	31	33	36	38	42
kg	2000	1800	1590	1480	1330	1250	1100
ft	7'3" - 82'0"	91'10"	101'8"	108'3"	118'1"	124'8"	137'10"
lbs	4410	3970	3510	3260	2930	2760	2430



m	2,20 - 27,31	28	31	33	36	38	42
kg	2000	1942	1724	1601	1444	1354	1200
ft	7'3" - 89'7"	91'10"	101'8"	108'3"	118'1"	124'8"	137'10"
lbs	4410	4280	3800	3530	3180	2990	2650

HOEKDRUKKEN - RÉACTIONS - REACTIONS - ECKDRÜCKE - REAZIONI - REACCIONES



m	42	230	kN
ft	137'10"	52	kips
	38	226	
	124'8"	51	
	33	224	
	108'3"	50	



m	42	180	kN
ft	137'10"	40	kips
	38	175	
	124'8"	39	
	33	166	
	108'3"	37	

GEWICHT ZONDER BALLAST - POIDS PROPRE SANS LEST - WEIGHT WITHOUT BALLAST - GEWICHT OHNE BALLAST - PESO SENZA ZAVORRA

kg	15 500
lbs	34 170

AANDRIJVINGEN - MÉCHANISMES - MECHANISMS - ANTRIEBE - MECCANISMI - MECANISMOS



max. 2000 kg

	m/min	6,0	25,0	50,0
	kg	2000	2000	1250
	fpm	20	82	164
	lbs	4410	4410	2760
	kW	2,4	11,0	11,0
	HP	~3,2	~14,7	~14,7



max. 4000 kg

	m/min	3,0	12,5	25,0
	kg	4000	4000	2500
	fpm	10	41	82
	lbs	8820	8820	5510
	kW	2,4	11,0	11,0
	HP	~3,2	~14,7	~14,7

	m/min	28 / 57	2,4 kW
	fpm	~92 / 187	~3,2 HP

	m/min	28 / 57	2,4 kW
	fpm	~92 / 187	~3,2 HP

	tr/min	0 - 0,8	3 kW
			~4 HP

	tr/min	0 - 0,8	3 kW
			~4 HP

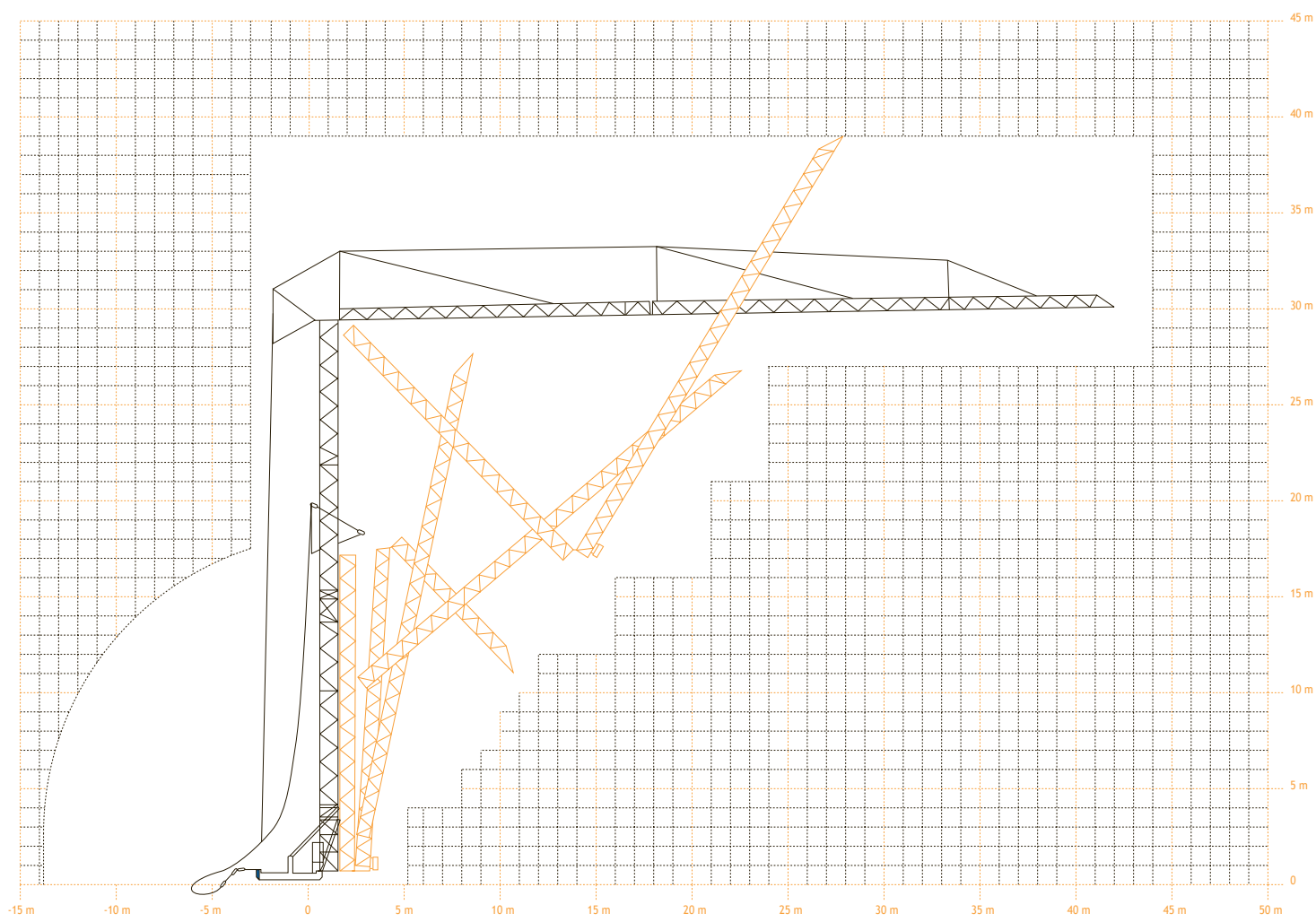
	m/min	25	2 x 1,5 kW
	fpm	82	~2 x 2 HP

	m/min	25	2 x 1,5 kW
	fpm	82	~2 x 2 HP

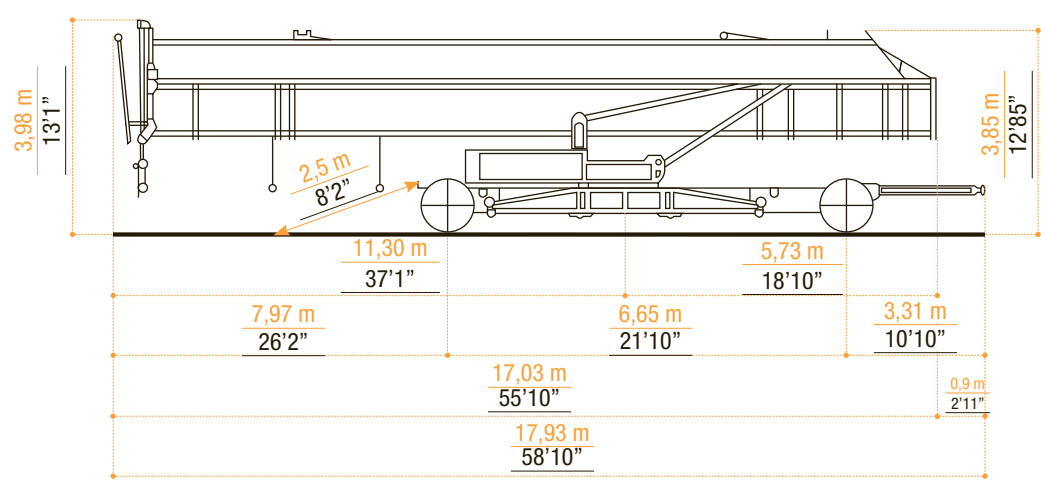
	20
--	----


















	380 V - 50 Hz
--	---------------

VEREISTE MONTAGERUIMTE - ENCOMBREMENT AU MONTAGE - SPACE REQUIREMENT - ABMESSUNGEN - SPAZIO NECESSARIO PER IL MONTAGGIO



TRANSPORT



 <ul style="list-style-type: none"> <li>• in bedrijf</li> <li>• en service</li> <li>• in service</li> <li>• in Betrieb</li> <li>• in servizio</li> <li>• en servicio</li> </ul>	 <ul style="list-style-type: none"> <li>• buiten bedrijf</li> <li>• hors service</li> <li>• out of service</li> <li>• außer Betrieb</li> <li>• fuori servizio</li> <li>• fuera de servicio</li> </ul>	 <ul style="list-style-type: none"> <li>• hijsen</li> <li>• levage</li> <li>• hoisting</li> <li>• heben</li> <li>• sollevamento</li> <li>• elevación</li> </ul>	 <ul style="list-style-type: none"> <li>• loopkatrijden</li> <li>• chariotage</li> <li>• jib trolleying</li> <li>• Katzfahren</li> <li>• traslazione carrello</li> <li>• poleas móviles</li> </ul>	 <ul style="list-style-type: none"> <li>• zwenken</li> <li>• orientation</li> <li>• slewing</li> <li>• Schwenken</li> <li>• rotazione</li> <li>• orientación</li> </ul>	 <ul style="list-style-type: none"> <li>• spanning</li> <li>• tension</li> <li>• voltage</li> <li>• spannung</li> <li>• tensione</li> <li>• tensión</li> </ul>	 <ul style="list-style-type: none"> <li>• gewicht zonder ballast</li> <li>• poids propre sans lest</li> <li>• weight without ballast</li> <li>• gewicht ohne Ballast</li> <li>• peso senza zavorra</li> <li>• peso sin lastre</li> </ul>
 <ul style="list-style-type: none"> <li>• lengte</li> <li>• longueur</li> <li>• length</li> <li>• länge</li> <li>• lunghezza</li> <li>• longitud</li> </ul>	 <ul style="list-style-type: none"> <li>• spoor</li> <li>• translation</li> <li>• rail</li> <li>• Kranfahren</li> <li>• carreggiata</li> <li>• rail</li> </ul>	 <ul style="list-style-type: none"> <li>• vermogen</li> <li>• puissance</li> <li>• power</li> <li>• leistung</li> <li>• potenza</li> <li>• potencia</li> </ul>	 <ul style="list-style-type: none"> <li>• micro snelheid</li> <li>• vitesse</li> <li>• speed</li> <li>• Geschwindigkeit</li> <li>• velocità</li> <li>• velocidad</li> </ul>	 <ul style="list-style-type: none"> <li>• 2<sup>o</sup> snelheid</li> <li>• 2<sup>o</sup> vitesse</li> <li>• 2<sup>o</sup> speed</li> <li>• 2<sup>o</sup> Geschwindigkeit</li> <li>• 2<sup>o</sup> velocità</li> <li>• 2<sup>o</sup> velocidad</li> </ul>	 <ul style="list-style-type: none"> <li>• 3<sup>o</sup> snelheid</li> <li>• 3<sup>o</sup> vitesse</li> <li>• 3<sup>o</sup> speed</li> <li>• 3<sup>o</sup> Geschwindigkeit</li> <li>• 3<sup>o</sup> velocità</li> <li>• 3<sup>o</sup> velocidad</li> </ul>	 <ul style="list-style-type: none"> <li>• maximale hoekdruk</li> <li>• réactions</li> <li>• reactions</li> <li>• Eckdrücke : 10 kN = 1t</li> <li>• press. angolare massima</li> <li>• presión angular máxima</li> </ul>
 <ul style="list-style-type: none"> <li>• enkel inschering zonder hijsblok</li> <li>• simple mouflage sans moufle</li> <li>• 2 fall reeving without houstingblock</li> <li>• 2 Fach Einsicherung ohne Hakenflasche</li> <li>• passaggio semplice senza paranca</li> <li>• solamente elevación sin polea</li> </ul>	 <ul style="list-style-type: none"> <li>• enkel inschering met hijsblok</li> <li>• simple mouflage avec moufle</li> <li>• 2 fall reeving with houstingblock</li> <li>• 2 Fach Einsicherung mit Hakenflasche</li> <li>• passaggio semplice con paranca</li> <li>• solamente elevación con polea</li> </ul>	 <ul style="list-style-type: none"> <li>• dubbel inschering</li> <li>• double mouflage</li> <li>• 4 fall reeving</li> <li>• 4 Fach Einsicherung</li> <li>• passaggio doppio</li> <li>• elevación doble</li> </ul>				

Konform richtlijn 2000/14/EG betreffende geluidsemissie van materieel voor gebruik buitenshuis en wijzigingen. - également conforme aux dispositions de la directive "émission sonores des équipements utilisés à l'extérieur des bâtiments" 2000/14/CE et aux législations la transposant. - Requirements of directive 2000/14/CE "noise emission in the environment by equipment for use outdoors, as amended. - Bestimmung der Richtlinie "Lärmübertragung des ausserhalb der Gebäude benutzten Ausrüstungen" 2000/14/EG und den gesetzlichen Vorschriften.



**ARCOMET**

Industrieweg 139 - 3583 Paal-Beringen - BELGIUM - T +32 (0)11 450 950 - EMAIL [arcomet@arcomet.com](mailto:arcomet@arcomet.com) - [www.arcomet.com](http://www.arcomet.com)