

# AMERICAN<sup>®</sup>

## A 100-HC HYDRAULIC CRAWLER CRANE

### LIFT RATINGS IN POUNDS

With 59H Open Throat Boom, 24' Floating Mast and 51,000 Pound Counterweight Fully Retracted

| Boom & Mast Length   | Radius Feet | Boom Angle Degrees | Side Frames Retracted Pounds | Side Frames Extended Pounds | From Boom Point to Ground Feet |
|----------------------|-------------|--------------------|------------------------------|-----------------------------|--------------------------------|
| 50' BOOM<br>24' MAST | 12          | 81.0               | 220,000 *                    | 220,000 *                   | 56                             |
|                      | 15          | 77.5               | 180,380                      | 220,000 *                   | 55                             |
|                      | 20          | 71.5               | 113,920                      | 147,800                     | 54                             |
|                      | 25          | 65.3               | 82,690                       | 103,810                     | 52                             |
|                      | 30          | 58.8               | 64,520                       | 79,600                      | 49                             |
|                      | 35          | 51.7               | 52,680                       | 64,230                      | 46                             |
|                      | 40          | 43.9               | 44,310                       | 53,680                      | 41                             |
|                      | 50          | 22.3               | 33,220                       | 39,950                      | 25                             |
| 60' BOOM<br>24' MAST | 14          | 80.6               | 204,080                      | 220,000 *                   | 66                             |
|                      | 15          | 79.6               | 180,490                      | 220,000 *                   | 66                             |
|                      | 20          | 74.7               | 113,950                      | 147,890                     | 65                             |
|                      | 25          | 69.6               | 82,680                       | 103,850                     | 63                             |
|                      | 30          | 64.4               | 64,480                       | 79,610                      | 61                             |
|                      | 35          | 59.0               | 52,660                       | 64,220                      | 58                             |
|                      | 40          | 53.2               | 44,270                       | 53,680                      | 54                             |
|                      | 50          | 39.8               | 33,220                       | 39,970                      | 45                             |
|                      | 60          | 20.3               | 26,250                       | 31,480                      | 27                             |
| 70' BOOM<br>24' MAST | 16          | 80.3               | 161,850                      | 206,570 *                   | 76                             |
|                      | 20          | 76.9               | 113,970                      | 147,960                     | 75                             |
|                      | 25          | 72.7               | 82,690                       | 103,880                     | 73                             |
|                      | 30          | 68.3               | 64,460                       | 79,620                      | 72                             |
|                      | 35          | 63.8               | 52,650                       | 64,220                      | 69                             |
|                      | 40          | 59.1               | 44,250                       | 53,680                      | 67                             |
|                      | 50          | 48.9               | 33,210                       | 39,980                      | 59                             |
|                      | 60          | 36.7               | 26,300                       | 31,500                      | 48                             |
|                      | 70          | 18.8               | 21,470                       | 25,760                      | 29                             |
| 80' BOOM<br>24' MAST | 17          | 80.8               | 146,560                      | 194,360 *                   | 86                             |
|                      | 20          | 78.6               | 113,890                      | 147,940                     | 85                             |
|                      | 25          | 74.9               | 82,570                       | 103,800                     | 84                             |
|                      | 30          | 71.1               | 64,320                       | 79,520                      | 82                             |
|                      | 35          | 67.3               | 52,500                       | 64,100                      | 80                             |
|                      | 40          | 63.3               | 44,090                       | 53,550                      | 78                             |
|                      | 50          | 54.9               | 33,040                       | 39,830                      | 72                             |
|                      | 60          | 45.5               | 26,150                       | 31,350                      | 63                             |
|                      | 70          | 34.2               | 21,350                       | 25,660                      | 51                             |
|                      | 80          | 17.5               | 17,820                       | 21,450                      | 30                             |
| 90' BOOM<br>24' MAST | 19          | 80.5               | 122,960                      | 161,540                     | 95                             |
|                      | 20          | 79.9               | 113,850                      | 147,910                     | 95                             |
|                      | 25          | 76.6               | 82,530                       | 103,770                     | 94                             |
|                      | 30          | 73.3               | 64,260                       | 79,480                      | 93                             |
|                      | 35          | 69.9               | 52,450                       | 64,050                      | 91                             |
|                      | 40          | 66.5               | 44,040                       | 53,510                      | 89                             |
|                      | 50          | 59.3               | 32,990                       | 39,790                      | 84                             |
|                      | 60          | 51.5               | 26,120                       | 31,310                      | 77                             |
|                      | 70          | 42.8               | 21,320                       | 25,630                      | 67                             |
|                      | 80          | 32.2               | 17,820                       | 21,450                      | 54                             |
|                      | 90          | 16.5               | 15,130                       | 18,270                      | 32                             |

| Boom & Mast Length    | Radius Feet | Boom Angle Degrees | Side Frames Retracted Pounds | Side Frames Extended Pounds | From Boom Point to Ground Feet |
|-----------------------|-------------|--------------------|------------------------------|-----------------------------|--------------------------------|
| 100' BOOM<br>24' MAST | 20          | 80.9               | 113,740                      | 147,850                     | 105                            |
|                       | 25          | 78.0               | 82,380                       | 103,660                     | 104                            |
|                       | 30          | 75.0               | 64,090                       | 79,350                      | 103                            |
|                       | 35          | 72.0               | 52,270                       | 63,880                      | 102                            |
|                       | 40          | 69.0               | 43,860                       | 53,350                      | 100                            |
|                       | 50          | 62.7               | 32,770                       | 39,590                      | 95                             |
|                       | 60          | 56.0               | 25,920                       | 31,110                      | 89                             |
|                       | 70          | 48.7               | 21,130                       | 25,450                      | 81                             |
|                       | 80          | 40.5               | 17,630                       | 21,270                      | 71                             |
|                       | 90          | 30.5               | 14,960                       | 18,110                      | 57                             |
|                       | 100         | 15.6               | 12,830                       | 15,600                      | 33                             |
| 110' BOOM<br>24' MAST | 22          | 80.7               | 98,620                       | 126,330                     | 115                            |
|                       | 25          | 79.1               | 82,230                       | 103,530                     | 115                            |
|                       | 30          | 76.4               | 63,930                       | 79,210                      | 114                            |
|                       | 35          | 73.7               | 52,110                       | 63,730                      | 112                            |
|                       | 40          | 71.0               | 43,690                       | 53,200                      | 111                            |
|                       | 50          | 65.3               | 32,610                       | 39,440                      | 107                            |
|                       | 60          | 59.4               | 25,770                       | 30,950                      | 101                            |
|                       | 70          | 53.2               | 20,980                       | 25,310                      | 94                             |
|                       | 80          | 46.3               | 17,480                       | 21,130                      | 86                             |
|                       | 90          | 38.5               | 14,800                       | 17,960                      | 75                             |
|                       | 100         | 29.0               | 12,700                       | 15,470                      | 60                             |
|                       | 110         | 14.8               | 10,990                       | 13,470                      | 34                             |
| 120' BOOM<br>24' MAST | 23          | 81.0               | 92,290                       | 117,560                     | 125                            |
|                       | 25          | 80.0               | 82,080                       | 103,400                     | 125                            |
|                       | 30          | 77.6               | 63,740                       | 79,050                      | 124                            |
|                       | 35          | 75.1               | 51,930                       | 63,550                      | 123                            |
|                       | 40          | 72.6               | 43,490                       | 53,020                      | 121                            |
|                       | 50          | 67.5               | 32,380                       | 39,230                      | 117                            |
|                       | 60          | 62.2               | 25,550                       | 30,720                      | 113                            |
|                       | 70          | 56.7               | 20,750                       | 25,090                      | 107                            |
|                       | 80          | 50.7               | 17,250                       | 20,910                      | 99                             |
|                       | 90          | 44.2               | 14,580                       | 17,740                      | 90                             |
|                       | 100         | 36.8               | 12,480                       | 15,260                      | 78                             |
|                       | 110         | 27.8               | 10,780                       | 13,260                      | 62                             |
|                       | 120         | 14.2               | 9,370                        | 11,610                      | 36                             |
| 130' BOOM<br>24' MAST | 25          | 80.8               | 81,910                       | 103,250                     | 135                            |
|                       | 30          | 78.5               | 63,580                       | 78,910                      | 134                            |
|                       | 35          | 76.3               | 51,770                       | 63,390                      | 133                            |
|                       | 40          | 74.0               | 43,330                       | 52,870                      | 132                            |
|                       | 50          | 69.3               | 32,230                       | 39,080                      | 128                            |
|                       | 60          | 64.5               | 25,400                       | 30,570                      | 124                            |
|                       | 70          | 59.5               | 20,610                       | 24,950                      | 119                            |
|                       | 80          | 54.2               | 17,110                       | 20,770                      | 112                            |
|                       | 90          | 48.6               | 14,440                       | 17,600                      | 104                            |
|                       | 100         | 42.4               | 12,350                       | 15,130                      | 94                             |
|                       | 110         | 35.3               | 10,640                       | 13,130                      | 81                             |
|                       | 120         | 26.6               | 9,250                        | 11,490                      | 65                             |
|                       | 130         | 13.6               | 8,070                        | 10,110                      | 37                             |

| Boom & Mast Length    | Radius Feet | Boom Angle Degrees | Side Frames Retracted Pounds | Side Frames Extended Pounds | From Boom Point to Ground Feet |
|-----------------------|-------------|--------------------|------------------------------|-----------------------------|--------------------------------|
| 140' BOOM<br>24' MAST | 27          | 80.6               | 73,350                       | 91,760                      | 145                            |
|                       | 30          | 79.4               | 63,380                       | 78,740                      | 144                            |
|                       | 35          | 77.3               | 51,580                       | 63,210                      | 143                            |
|                       | 40          | 75.2               | 43,120                       | 52,680                      | 142                            |
|                       | 50          | 70.9               | 32,000                       | 38,870                      | 139                            |
|                       | 60          | 66.5               | 25,190                       | 30,340                      | 135                            |
|                       | 70          | 61.9               | 20,370                       | 24,730                      | 130                            |
|                       | 80          | 57.2               | 16,870                       | 20,540                      | 124                            |
|                       | 90          | 52.1               | 14,200                       | 17,370                      | 117                            |
|                       | 100         | 46.7               | 12,110                       | 14,900                      | 108                            |
|                       | 110         | 40.8               | 10,410                       | 12,900                      | 98                             |
|                       | 120         | 34.0               | 9,010                        | 11,260                      | 84                             |
|                       | 130         | 25.6               | 7,830                        | 9,880                       | 67                             |
|                       | 140         | 13.1               | 6,840                        | 8,720                       | 38                             |
| 150' BOOM<br>24' MAST | 28          | 80.8               | 69,530                       | 86,950                      | 155                            |
|                       | 30          | 80.1               | 63,180                       | 78,570                      | 154                            |
|                       | 35          | 78.1               | 51,380                       | 63,010                      | 153                            |
|                       | 40          | 76.2               | 42,920                       | 52,490                      | 152                            |
|                       | 50          | 72.2               | 31,790                       | 38,670                      | 149                            |
|                       | 60          | 68.1               | 24,980                       | 30,140                      | 146                            |
|                       | 70          | 63.9               | 20,180                       | 24,540                      | 141                            |
|                       | 80          | 59.6               | 16,670                       | 20,350                      | 136                            |
|                       | 90          | 55.0               | 14,000                       | 17,180                      | 129                            |
|                       | 100         | 50.2               | 11,900                       | 14,700                      | 122                            |
|                       | 110         | 45.0               | 10,200                       | 12,700                      | 112                            |
|                       | 120         | 39.3               | 8,810                        | 11,060                      | 101                            |
|                       | 130         | 32.8               | 7,640                        | 9,690                       | 87                             |
|                       | 140         | 24.8               | 6,630                        | 8,520                       | 69                             |
|                       |             | 150                | 12.7                         | 5,770                       | 7,520                          |
| 160' BOOM<br>24' MAST | 30          | 80.7               | 62,990                       | 78,410                      | 165                            |
|                       | 35          | 78.9               | 51,180                       | 62,830                      | 164                            |
|                       | 40          | 77.1               | 42,700                       | 52,300                      | 163                            |
|                       | 50          | 73.3               | 31,560                       | 38,450                      | 160                            |
|                       | 60          | 69.6               | 24,760                       | 29,910                      | 157                            |
|                       | 70          | 65.7               | 19,940                       | 24,310                      | 152                            |
|                       | 80          | 61.7               | 16,430                       | 20,120                      | 147                            |
|                       | 90          | 57.5               | 13,760                       | 16,940                      | 141                            |
|                       | 100         | 53.2               | 11,650                       | 14,460                      | 134                            |
|                       | 110         | 48.5               | 9,950                        | 12,450                      | 126                            |
|                       | 120         | 43.5               | 8,550                        | 10,810                      | 116                            |
|                       | 130         | 38.0               | 7,380                        | 9,440                       | 105                            |
|                       | 140         | 31.7               | 6,380                        | 8,270                       | 90                             |
|                       | 150         | 24.0               | 5,530                        | 7,280                       | 71                             |
|                       | 160         | 12.3               | 4,780                        | 6,400                       | 40                             |

# LIFT RATINGS IN POUNDS

With 59H Open Throat Boom, 24' Floating Mast and 51,000 Pound Counterweight Fully Retracted

| Boom & Mast Length | Radius Feet     | Boom Angle Degrees | Side Frames Retracted Pounds | Side Frames Extended Pounds | From Boom Point to Ground Feet |     |
|--------------------|-----------------|--------------------|------------------------------|-----------------------------|--------------------------------|-----|
| <b>170' BOOM</b>   | 31              | 80.9               | 59,980                       | 73,340 *                    | 175                            |     |
|                    | 35              | 79.6               | 50,980                       | 62,630                      | 174                            |     |
|                    | 40              | 77.8               | 42,500                       | 52,110                      | 173                            |     |
|                    | 50              | 74.3               | 31,360                       | 38,260                      | 170                            |     |
|                    | 60              | 70.8               | 24,570                       | 29,710                      | 167                            |     |
|                    | 70              | 67.2               | 19,760                       | 24,130                      | 163                            |     |
|                    | 80              | 63.5               | 16,240                       | 19,930                      | 159                            |     |
|                    | 90              | 59.6               | 13,570                       | 16,760                      | 153                            |     |
|                    | <b>24' MAST</b> | 100                | 55.6                         | 11,470                      | 14,270                         | 147 |
|                    |                 | 110                | 51.4                         | 9,770                       | 12,270                         | 139 |
| 120                |                 | 47.0               | 8,370                        | 10,630                      | 131                            |     |
| 130                |                 | 42.1               | 7,200                        | 9,260                       | 120                            |     |
| 140                |                 | 36.8               | 6,210                        | 8,100                       | 108                            |     |
| 150                |                 | 30.7               | 5,350                        | 7,100                       | 93                             |     |
| 160                |                 | 23.2               | 4,610                        | 6,240                       | 73                             |     |
| 170                |                 | 11.9               | 3,960                        | 5,470                       | 41                             |     |
| <b>180' BOOM</b>   | 33              | 80.8               | 55,060                       | 64,040 *                    | 184                            |     |
|                    | 35              | 80.1               | 50,780                       | 62,430                      | 184                            |     |
|                    | 40              | 78.5               | 42,290                       | 51,290                      | 183                            |     |
|                    | 50              | 75.2               | 31,120                       | 38,040                      | 181                            |     |
|                    | 60              | 71.9               | 24,350                       | 29,480                      | 178                            |     |
|                    | 70              | 68.5               | 19,520                       | 23,900                      | 174                            |     |
|                    | 80              | 65.1               | 16,010                       | 19,700                      | 170                            |     |
|                    | 90              | 61.5               | 13,330                       | 16,530                      | 165                            |     |
|                    | <b>24' MAST</b> | 100                | 57.8                         | 11,220                      | 14,030                         | 159 |
|                    |                 | 110                | 53.9                         | 9,520                       | 12,030                         | 152 |
| 120                |                 | 49.9               | 8,110                        | 10,380                      | 144                            |     |
| 130                |                 | 45.6               | 6,950                        | 9,010                       | 135                            |     |
| 140                |                 | 40.9               | 5,940                        | 7,840                       | 124                            |     |
| 150                |                 | 35.7               | 5,090                        | 6,840                       | 111                            |     |
| 160                |                 | 29.8               | 4,340                        | 5,970                       | 96                             |     |
| 180                |                 | 11.5               | 3,130                        | 4,560                       | 42                             |     |
| <b>190' BOOM</b>   | 34              | 81.0               | 52,630                       | 55,980 *                    | 194                            |     |
|                    | 35              | 80.7               | 50,570                       | 55,700 *                    | 194                            |     |
|                    | 40              | 79.1               | 42,070                       | 51,710                      | 193                            |     |
|                    | 50              | 76.0               | 30,900                       | 37,820                      | 191                            |     |
|                    | 60              | 72.9               | 24,130                       | 29,260                      | 188                            |     |
|                    | 70              | 69.7               | 19,310                       | 23,700                      | 185                            |     |
|                    | 80              | 66.5               | 15,780                       | 19,480                      | 181                            |     |
|                    | 90              | 63.1               | 13,100                       | 16,300                      | 176                            |     |
|                    | <b>24' MAST</b> | 100                | 59.7                         | 11,000                      | 13,810                         | 170 |
|                    |                 | 110                | 56.1                         | 9,300                       | 11,810                         | 164 |
| 120                |                 | 52.4               | 7,900                        | 10,170                      | 157                            |     |
| 130                |                 | 48.5               | 6,720                        | 8,790                       | 149                            |     |
| 140                |                 | 44.3               | 5,720                        | 7,620                       | 139                            |     |
| 150                |                 | 39.8               | 4,870                        | 6,620                       | 128                            |     |
| 160                |                 | 34.8               | 4,120                        | 5,760                       | 115                            |     |
| 190                |                 | 11.2               | 2,390                        | 3,740                       | 43                             |     |

| Boom & Mast Length | Radius Feet     | Boom Angle Degrees | Side Frames Retracted Pounds | Side Frames Extended Pounds | From Boom Point to Ground Feet |     |
|--------------------|-----------------|--------------------|------------------------------|-----------------------------|--------------------------------|-----|
| <b>200' BOOM</b>   | 36              | 80.8               | 48,430                       | 49,280 *                    | 204                            |     |
|                    | 40              | 79.7               | 41,860                       | 48,570 *                    | 203                            |     |
|                    | 50              | 76.7               | 30,660                       | 37,610                      | 201                            |     |
|                    | 60              | 73.8               | 23,900                       | 29,020                      | 199                            |     |
|                    | 70              | 70.8               | 19,060                       | 23,460                      | 195                            |     |
|                    | 80              | 67.7               | 15,540                       | 19,250                      | 192                            |     |
|                    | 90              | 64.6               | 12,850                       | 16,060                      | 187                            |     |
|                    | <b>24' MAST</b> | 100                | 61.3                         | 10,740                      | 13,570                         | 182 |
|                    |                 | 110                | 58.0                         | 9,040                       | 11,560                         | 176 |
|                    |                 | 120                | 54.6                         | 7,640                       | 9,910                          | 169 |
| 130                |                 | 51.0               | 6,460                        | 8,530                       | 162                            |     |
| 140                |                 | 47.2               | 5,460                        | 7,360                       | 153                            |     |
| 150                |                 | 43.1               | 4,610                        | 6,370                       | 143                            |     |
| 160                |                 | 38.7               | 3,850                        | 5,490                       | 131                            |     |
| 200                |                 | 10.9               | 1,670                        | 2,950                       | 44                             |     |
| <b>210' BOOM</b>   | 38              | 80.7               | 43,610 *                     | 43,610 *                    | 214                            |     |
|                    | 40              | 80.2               | 41,640                       | 43,270 *                    | 214                            |     |
|                    | 50              | 77.4               | 30,440                       | 37,390                      | 212                            |     |
|                    | 60              | 74.6               | 23,690                       | 29,090                      | 209                            |     |
|                    | 70              | 71.7               | 18,860                       | 23,260                      | 206                            |     |
|                    | 80              | 68.8               | 15,330                       | 19,050                      | 202                            |     |
|                    | 90              | 65.9               | 12,650                       | 15,860                      | 198                            |     |
|                    | <b>24' MAST</b> | 100                | 62.8                         | 10,530                      | 13,360                         | 193 |
|                    |                 | 110                | 59.7                         | 8,830                       | 11,350                         | 188 |
|                    |                 | 120                | 56.5                         | 7,430                       | 9,710                          | 182 |
| 130                |                 | 53.1               | 6,250                        | 8,330                       | 174                            |     |
| 140                |                 | 49.6               | 5,250                        | 7,160                       | 166                            |     |
| 150                |                 | 46.0               | 4,400                        | 6,160                       | 157                            |     |
| 160                |                 | 42.0               | 3,650                        | 5,290                       | 147                            |     |
| 210                |                 | 10.7               | 1,070                        | 2,280                       | 45                             |     |
| <b>220' BOOM</b>   | 39              | 80.9               | 38,720 *                     | 38,720 *                    | 224                            |     |
|                    | 40              | 80.6               | 38,510 *                     | 38,510 *                    | 224                            |     |
|                    | 50              | 78.0               | 30,210                       | 35,940 *                    | 222                            |     |
|                    | 60              | 75.3               | 23,460                       | 28,880                      | 219                            |     |
|                    | 70              | 72.6               | 18,620                       | 23,030                      | 217                            |     |
|                    | 80              | 69.8               | 15,090                       | 18,820                      | 213                            |     |
|                    | 90              | 67.0               | 12,400                       | 15,620                      | 209                            |     |
|                    | <b>24' MAST</b> | 100                | 64.2                         | 10,290                      | 13,120                         | 205 |
|                    |                 | 110                | 61.2                         | 8,590                       | 11,110                         | 199 |
|                    |                 | 120                | 58.2                         | 7,170                       | 9,450                          | 193 |
| 130                |                 | 55.1               | 5,990                        | 8,070                       | 187                            |     |
| 140                |                 | 51.8               | 4,990                        | 6,900                       | 179                            |     |
| 150                |                 | 48.4               | 4,140                        | 5,910                       | 171                            |     |
| 160                |                 | 44.8               | 3,390                        | 5,030                       | 161                            |     |
| 220                |                 | 10.4               | 1,580                        | 1,580                       | 46                             |     |

| Boom & Mast Length | Radius Feet     | Boom Angle Degrees | Side Frames Retracted Pounds | Side Frames Extended Pounds | From Boom Point to Ground Feet |     |
|--------------------|-----------------|--------------------|------------------------------|-----------------------------|--------------------------------|-----|
| <b>230' BOOM</b>   | 41              | 80.8               | 34,060 *                     | 34,060 *                    | 234                            |     |
|                    | 50              | 78.5               | 29,970                       | 32,230 *                    | 232                            |     |
|                    | 60              | 75.9               | 23,230                       | 28,650                      | 230                            |     |
|                    | 70              | 73.4               | 18,400                       | 22,820                      | 227                            |     |
|                    | 80              | 70.7               | 14,860                       | 18,590                      | 224                            |     |
|                    | 90              | 68.1               | 12,170                       | 15,400                      | 220                            |     |
|                    | 100             | 65.4               | 10,050                       | 12,890                      | 216                            |     |
|                    | <b>24' MAST</b> | 110                | 62.6                         | 8,350                       | 10,880                         | 211 |
|                    |                 | 120                | 59.7                         | 6,940                       | 9,230                          | 205 |
|                    |                 | 130                | 56.8                         | 5,770                       | 7,850                          | 199 |
| 140                |                 | 53.8               | 4,760                        | 6,680                       | 192                            |     |
| 150                |                 | 50.6               | 3,900                        | 5,670                       | 184                            |     |
| 160                |                 | 47.3               | 3,150                        | 4,800                       | 175                            |     |
| 170                |                 | 43.8               | 2,490                        | 4,030                       | 165                            |     |
| 230                |                 | 19.9               | 1,410                        | 2,770                       | 141                            |     |
| <b>240' BOOM</b>   | 42              | 80.9               | 29,830 *                     | 29,830 *                    | 244                            |     |
|                    | 50              | 79.0               | 27,070 *                     | 27,070 *                    | 242                            |     |
|                    | 60              | 76.5               | 23,010                       | 25,030 *                    | 240                            |     |
|                    | 70              | 74.1               | 18,150                       | 22,350 *                    | 237                            |     |
|                    | 80              | 71.6               | 14,620                       | 18,360                      | 234                            |     |
|                    | 90              | 69.0               | 11,920                       | 15,150                      | 231                            |     |
|                    | 100             | 66.4               | 9,810                        | 12,650                      | 227                            |     |
|                    | <b>24' MAST</b> | 110                | 63.8                         | 8,090                       | 10,630                         | 222 |
|                    |                 | 120                | 61.1                         | 6,680                       | 8,970                          | 217 |
|                    |                 | 130                | 58.3                         | 5,500                       | 7,590                          | 211 |
| 140                |                 | 55.5               | 4,500                        | 6,420                       | 204                            |     |
| 150                |                 | 52.5               | 3,640                        | 5,410                       | 197                            |     |
| 160                |                 | 49.5               | 2,890                        | 4,540                       | 189                            |     |
| 170                |                 | 46.2               | 2,230                        | 3,770                       | 180                            |     |
| 240                |                 | 25.7               | 1,060                        | 1,060                       | 110                            |     |

# LIFT RATINGS IN KILOGRAMS

With 59H Open Throat Boom, 7.3M Floating Mast and 23,134 Kg Counterweight Fully Retracted

| Boom & Mast Length | Radius Meters | Boom Angle Degrees | Side Frames Retracted Kg | Side Frames Extended Kg | From Boom Point to Ground Meters |
|--------------------|---------------|--------------------|--------------------------|-------------------------|----------------------------------|
| <b>15.2M BOOM</b>  | 3.7           | 81.0               | 100,000*                 | 100,000*                | 17                               |
|                    | 4.0           | 79.7               | 100,000*                 | 100,000*                | 17                               |
|                    | 4.5           | 77.8               | 84,120                   | 100,000*                | 17                               |
|                    | 5.0           | 75.8               | 70,380                   | 91,510*                 | 17                               |
|                    | 5.5           | 73.8               | 60,440                   | 80,170                  | 17                               |
|                    | 6.0           | 71.9               | 52,910                   | 68,860                  | 17                               |
|                    | 7.0           | 67.8               | 42,230                   | 53,610                  | 16                               |
|                    | 8.0           | 63.7               | 35,070                   | 43,790                  | 16                               |
|                    | 9.0           | 59.4               | 29,890                   | 36,930                  | 15                               |
|                    | 10.0          | 54.9               | 26,020                   | 31,850                  | 14                               |
|                    | 11.0          | 50.1               | 22,960                   | 27,950                  | 14                               |
|                    | 12.0          | 44.9               | 20,510                   | 24,870                  | 13                               |
|                    | 13.0          | 39.2               | 18,500                   | 22,360                  | 12                               |
|                    | 14.0          | 32.7               | 16,820                   | 20,270                  | 10                               |
|                    | 15.0          | 24.7               | 15,380                   | 18,500                  | 8                                |
| <b>18.3M BOOM</b>  | 4.3           | 80.6               | 92,570                   | 100,000*                | 20                               |
|                    | 4.5           | 79.8               | 84,170                   | 100,000*                | 20                               |
|                    | 5.0           | 78.2               | 70,410                   | 91,470*                 | 20                               |
|                    | 5.5           | 76.6               | 60,460                   | 80,210                  | 20                               |
|                    | 6.0           | 75.0               | 52,930                   | 68,910                  | 20                               |
|                    | 7.0           | 71.7               | 42,230                   | 53,630                  | 19                               |
|                    | 8.0           | 68.4               | 35,060                   | 43,790                  | 19                               |
|                    | 9.0           | 64.9               | 29,880                   | 36,940                  | 19                               |
|                    | 10.0          | 61.4               | 26,000                   | 31,850                  | 18                               |
|                    | 11.0          | 57.7               | 22,940                   | 27,940                  | 17                               |
|                    | 12.0          | 53.9               | 20,500                   | 24,870                  | 17                               |
|                    | 13.0          | 49.9               | 18,480                   | 22,350                  | 16                               |
|                    | 14.0          | 45.6               | 16,800                   | 20,260                  | 15                               |
|                    | 15.0          | 41.0               | 15,380                   | 18,510                  | 14                               |
|                    | 16.0          | 35.9               | 14,150                   | 17,010                  | 13                               |
| 17.0               | 30.0          | 13,100             | 15,710                   | 11                      |                                  |
| 18.0               | 22.8          | 12,160             | 14,580                   | 9                       |                                  |
| <b>21.3M BOOM</b>  | 4.9           | 80.3               | 73,410                   | 93,700*                 | 23                               |
|                    | 5.0           | 79.9               | 70,440                   | 91,420*                 | 23                               |
|                    | 5.5           | 78.6               | 60,470                   | 80,250                  | 23                               |
|                    | 6.0           | 77.2               | 52,950                   | 68,940                  | 23                               |
|                    | 7.0           | 74.4               | 42,230                   | 53,650                  | 23                               |
|                    | 8.0           | 71.6               | 35,060                   | 43,800                  | 22                               |
|                    | 9.0           | 68.7               | 29,870                   | 36,950                  | 22                               |
|                    | 10.0          | 65.8               | 26,000                   | 31,850                  | 21                               |
|                    | 11.0          | 62.8               | 22,940                   | 27,940                  | 21                               |
|                    | 12.0          | 59.7               | 20,490                   | 24,870                  | 20                               |
|                    | 13.0          | 56.5               | 18,470                   | 22,350                  | 20                               |
|                    | 14.0          | 53.2               | 16,800                   | 20,270                  | 19                               |
|                    | 15.0          | 49.8               | 15,370                   | 18,510                  | 18                               |
|                    | 16.0          | 46.1               | 14,140                   | 17,010                  | 17                               |
|                    | 17.0          | 42.2               | 13,110                   | 15,720                  | 16                               |
| 18.0               | 38.0          | 12,180             | 14,580                   | 15                      |                                  |
| 19.0               | 33.4          | 11,350             | 13,590                   | 14                      |                                  |
| 20.0               | 28.0          | 10,620             | 12,730                   | 12                      |                                  |
| <b>24.4M BOOM</b>  | 5.2           | 80.8               | 66,480                   | 88,160*                 | 26                               |
|                    | 5.5           | 80.0               | 60,450                   | 80,250                  | 26                               |
|                    | 6.0           | 78.8               | 52,910                   | 68,930                  | 26                               |
|                    | 7.0           | 76.4               | 42,180                   | 53,620                  | 26                               |
|                    | 8.0           | 74.0               | 35,000                   | 43,770                  | 25                               |
|                    | 9.0           | 71.5               | 29,810                   | 36,900                  | 25                               |
|                    | 10.0          | 69.0               | 25,930                   | 31,800                  | 25                               |
|                    | 11.0          | 66.4               | 22,880                   | 27,880                  | 24                               |
|                    | 12.0          | 63.8               | 20,420                   | 24,820                  | 24                               |
|                    | 13.0          | 61.2               | 18,400                   | 22,290                  | 23                               |
|                    | 14.0          | 58.5               | 16,720                   | 20,200                  | 23                               |
|                    | 15.0          | 55.6               | 15,290                   | 18,440                  | 22                               |
|                    | 16.0          | 52.7               | 14,070                   | 16,950                  | 21                               |
|                    | 17.0          | 49.7               | 13,050                   | 15,650                  | 21                               |
|                    | 18.0          | 46.5               | 12,110                   | 14,520                  | 20                               |
| 19.0               | 43.1          | 11,280             | 13,530                   | 19                      |                                  |
| 20.0               | 39.5          | 10,550             | 12,670                   | 17                      |                                  |
| 22.0               | 31.3          | 9,300              | 11,170                   | 15                      |                                  |
| 24.0               | 20.4          | 8,260              | 9,940                    | 10                      |                                  |

| Boom & Mast Length | Radius Meters | Boom Angle Degrees | Side Frames Retracted Kg | Side Frames Extended Kg | From Boom Point to Ground Meters |
|--------------------|---------------|--------------------|--------------------------|-------------------------|----------------------------------|
| <b>27.4M BOOM</b>  | 5.8           | 80.5               | 55,770                   | 73,270                  | 29                               |
|                    | 6.0           | 80.1               | 52,900                   | 68,930                  | 29                               |
|                    | 7.0           | 77.9               | 42,160                   | 53,600                  | 29                               |
|                    | 8.0           | 75.8               | 34,980                   | 43,750                  | 29                               |
|                    | 9.0           | 73.6               | 29,780                   | 36,880                  | 28                               |
|                    | 10.0          | 71.4               | 25,910                   | 31,780                  | 28                               |
|                    | 11.0          | 69.2               | 22,850                   | 27,850                  | 28                               |
|                    | 12.0          | 66.9               | 20,390                   | 24,790                  | 27                               |
|                    | 13.0          | 64.6               | 18,380                   | 22,270                  | 27                               |
|                    | 14.0          | 62.3               | 16,700                   | 20,190                  | 26                               |
|                    | 15.0          | 59.9               | 15,270                   | 18,430                  | 26                               |
|                    | 16.0          | 57.4               | 14,040                   | 16,920                  | 25                               |
|                    | 17.0          | 54.9               | 13,030                   | 15,620                  | 24                               |
|                    | 18.0          | 52.3               | 12,090                   | 14,500                  | 24                               |
|                    | 19.0          | 49.6               | 11,270                   | 13,500                  | 23                               |
| 20.0               | 46.8          | 10,540             | 12,670                   | 22                      |                                  |
| 22.0               | 40.7          | 9,290              | 11,170                   | 20                      |                                  |
| 24.0               | 33.7          | 8,270              | 9,950                    | 17                      |                                  |
| 26.0               | 25.1          | 7,400              | 8,920                    | 14                      |                                  |
| <b>30.5M BOOM</b>  | 6.1           | 80.9               | 51,590                   | 67,070                  | 32                               |
|                    | 7.0           | 79.2               | 42,090                   | 53,560                  | 32                               |
|                    | 8.0           | 77.2               | 34,910                   | 43,690                  | 32                               |
|                    | 9.0           | 75.3               | 29,700                   | 36,820                  | 32                               |
|                    | 10.0          | 73.3               | 25,840                   | 31,710                  | 31                               |
|                    | 11.0          | 71.4               | 22,770                   | 27,780                  | 31                               |
|                    | 12.0          | 69.4               | 20,310                   | 24,720                  | 31                               |
|                    | 13.0          | 67.3               | 18,290                   | 22,200                  | 30                               |
|                    | 14.0          | 65.3               | 16,600                   | 20,100                  | 30                               |
|                    | 15.0          | 63.2               | 15,170                   | 18,340                  | 29                               |
|                    | 16.0          | 61.0               | 13,960                   | 16,840                  | 29                               |
|                    | 17.0          | 58.9               | 12,940                   | 15,540                  | 28                               |
|                    | 18.0          | 56.6               | 12,000                   | 14,410                  | 27                               |
|                    | 19.0          | 54.3               | 11,190                   | 13,420                  | 27                               |
|                    | 20.0          | 52.0               | 10,450                   | 12,580                  | 26                               |
| 22.0               | 47.0          | 9,200              | 11,080                   | 24                      |                                  |
| 24.0               | 41.6          | 8,170              | 9,850                    | 22                      |                                  |
| 26.0               | 35.5          | 7,320              | 8,840                    | 20                      |                                  |
| 28.0               | 28.3          | 6,590              | 7,980                    | 16                      |                                  |
| 30.0               | 18.7          | 5,960              | 7,240                    | 12                      |                                  |
| <b>33.5M BOOM</b>  | 6.7           | 80.7               | 44,730                   | 57,310                  | 35                               |
|                    | 7.0           | 80.2               | 42,020                   | 53,510                  | 35                               |
|                    | 8.0           | 78.4               | 34,840                   | 43,630                  | 35                               |
|                    | 9.0           | 76.7               | 29,630                   | 36,750                  | 35                               |
|                    | 10.0          | 74.9               | 25,760                   | 31,640                  | 34                               |
|                    | 11.0          | 73.1               | 22,700                   | 27,710                  | 34                               |
|                    | 12.0          | 71.3               | 20,240                   | 24,660                  | 34                               |
|                    | 13.0          | 69.5               | 18,220                   | 22,130                  | 33                               |
|                    | 14.0          | 67.7               | 16,530                   | 20,030                  | 33                               |
|                    | 15.0          | 65.8               | 15,100                   | 18,270                  | 33                               |
|                    | 16.0          | 63.9               | 13,870                   | 16,760                  | 32                               |
|                    | 17.0          | 62.0               | 12,870                   | 15,460                  | 32                               |
|                    | 18.0          | 60.0               | 11,940                   | 14,340                  | 31                               |
|                    | 19.0          | 58.0               | 11,110                   | 13,340                  | 30                               |
|                    | 20.0          | 56.0               | 10,380                   | 12,510                  | 30                               |
| 22.0               | 51.7          | 9,130              | 11,010                   | 28                      |                                  |
| 24.0               | 47.2          | 8,110              | 9,800                    | 27                      |                                  |
| 26.0               | 42.3          | 7,250              | 8,780                    | 25                      |                                  |
| 28.0               | 36.9          | 6,520              | 7,910                    | 22                      |                                  |
| 30.0               | 30.7          | 5,900              | 7,180                    | 19                      |                                  |
| 32.0               | 23.0          | 5,360              | 6,540                    | 15                      |                                  |
| <b>36.6M BOOM</b>  | 7.0           | 81.0               | 41,860                   | 53,320                  | 38                               |
|                    | 8.0           | 79.4               | 34,760                   | 43,570                  | 38                               |
|                    | 9.0           | 77.8               | 29,540                   | 36,690                  | 38                               |
|                    | 10.0          | 76.2               | 25,680                   | 31,570                  | 38                               |
|                    | 11.0          | 74.6               | 22,610                   | 27,630                  | 37                               |
|                    | 12.0          | 72.9               | 20,140                   | 24,570                  | 37                               |
|                    | 13.0          | 71.3               | 18,120                   | 22,040                  | 37                               |
|                    | 14.0          | 69.6               | 16,430                   | 19,940                  | 36                               |

| Boom & Mast Length | Radius Meters     | Boom Angle Degrees | Side Frames Retracted Kg | Side Frames Extended Kg | From Boom Point to Ground Meters |
|--------------------|-------------------|--------------------|--------------------------|-------------------------|----------------------------------|
| <b>36.6M BOOM</b>  | 15.0              | 67.9               | 15,000                   | 18,180                  | 36                               |
|                    | 16.0              | 66.2               | 13,770                   | 16,670                  | 35                               |
|                    | 17.0              | 64.5               | 12,780                   | 15,370                  | 35                               |
|                    | 18.0              | 62.7               | 11,840                   | 14,230                  | 35                               |
|                    | 19.0              | 61.0               | 11,010                   | 13,300                  | 34                               |
|                    | 20.0              | 59.1               | 10,280                   | 12,420                  | 33                               |
|                    | 22.0              | 55.4               | 9,020                    | 10,910                  | 32                               |
|                    | 24.0              | 51.5               | 8,000                    | 9,700                   | 31                               |
|                    | 26.0              | 47.3               | 7,140                    | 8,680                   | 29                               |
|                    | 28.0              | 42.9               | 6,410                    | 7,810                   | 27                               |
|                    | 30.0              | 38.0               | 5,800                    | 7,080                   | 24                               |
|                    | 32.0              | 32.6               | 5,260                    | 6,450                   | 22                               |
|                    | 34.0              | 26.1               | 4,780                    | 5,890                   | 18                               |
|                    | 36.0              | 17.6               | 4,360                    | 5,390                   | 13                               |
|                    | <b>39.6M BOOM</b> | 7.6                | 80.8                     | 37,150                  | 46,830                           |
| 8.0                |                   | 80.2               | 34,690                   | 43,490                  | 41                               |
| 9.0                |                   | 78.7               | 29,480                   | 36,630                  | 41                               |
| 10.0               |                   | 77.3               | 25,620                   | 31,500                  | 41                               |
| 11.0               |                   | 75.8               | 22,540                   | 27,550                  | 40                               |
| 12.0               |                   | 74.3               | 20,070                   | 24,510                  | 40                               |
| 13.0               |                   | 72.8               | 18,050                   | 21,970                  | 40                               |
| 14.0               |                   | 71.2               | 16,360                   | 19,870                  | 40                               |
| 15.0               |                   | 69.7               | 14,930                   | 18,110                  | 39                               |
| 16.0               |                   | 68.2               | 13,700                   | 16,600                  | 39                               |
| 17.0               |                   | 66.6               | 12,710                   | 15,300                  | 38                               |
| 18.0               |                   | 65.0               | 11,770                   | 14,170                  | 38                               |
| 19.0               |                   | 63.4               | 10,940                   | 13,240                  | 37                               |
| 20.0               |                   | 61.7               | 10,210                   | 12,350                  | 37                               |
| 22.0               |                   | 58.4               | 8,960                    | 10,860                  | 36                               |
| 24.0               | 54.9              | 7,940              | 9,630                    | 34                      |                                  |
| 26.0               | 51.3              | 7,080              | 8,610                    | 33                      |                                  |
| 28.0               | 47.5              | 6,360              | 7,760                    | 31                      |                                  |
| 30.0               | 43.4              | 5,730              | 7,020                    | 29                      |                                  |
| 32.0               | 39.0              | 5,190              | 6,380                    | 27                      |                                  |
| 34.0               | 34.1              | 4,720              | 5,830                    | 24                      |                                  |
| 36.0               | 28.5              | 4,310              | 5,340                    | 21                      |                                  |
| 38.0               | 21.5              | 3,940              | 4,910                    | 16                      |                                  |
| <b>42.7M BOOM</b>  | 8.2               | 80.6               | 33,270                   | 41,620                  | 44                               |
|                    | 9.0               | 79.6               | 29,390                   | 36,560                  | 44                               |
|                    | 10.0              | 78.2               | 25,530                   | 31,420                  | 44                               |
|                    | 11.0              | 76.8               | 22,450                   | 27,470                  | 44                               |
|                    | 12.0              | 75.4               | 19,970                   | 24,420                  | 43                               |
|                    | 13.0              | 74.0               | 17,960                   | 21,890                  | 43                               |
|                    | 14.0              | 72.6               | 16,260                   | 19,790                  | 43                               |
|                    | 15.0              | 71.2               | 14,830                   | 18,010                  | 42                               |
|                    | 16.0              | 69.8               | 13,590                   | 16,500                  | 42                               |
|                    | 17.0              | 68.3               | 12,610                   | 15,200                  | 42                               |
|                    | 18.0              | 66.9               | 11,670                   | 14,060                  | 41                               |
|                    | 19.0              | 65.4               | 10,850                   | 13,150                  | 41                               |
|                    | 20.0              | 63.9               | 10,110                   | 12,260                  | 40                               |
|                    | 22.0              | 60.9               | 8,860                    | 10,760                  | 39                               |
|                    | 24.0              | 57.8               | 7,830                    | 9,530                   | 38                               |
| 26.0               | 54.5              | 6,970              | 8,510                    | 37                      |                                  |
| 28.0               | 51.1              | 6,250              | 7,650                    | 35                      |                                  |
| 30.0               | 47.6              | 5,630              | 6,920                    | 33                      |                                  |
| 32.0               | 43.8              | 5,080              | 6,280                    | 32                      |                                  |
| 34.0               | 39.8              | 4,610              | 5,730                    | 29                      |                                  |
| 36.0               | 35.3              | 4,200              | 5,240                    | 27                      |                                  |
| 38.0               | 30.3              | 3,820              | 4,800                    | 23                      |                                  |
| 40.0               | 24.4              | 3,490              | 4,410                    | 20                      |                                  |
| 42.0               | 16.7              | 3,190              | 4,060                    | 14                      |                                  |

# LIFT RATINGS IN KILOGRAMS

With 59H Open Throat Boom, 7.3M Floating Mast and 23,134 Kg Counterweight Fully Retracted

| Boom & Mast Length | Radius Meters | Boom Angle Degrees | Side Frames Retracted Kg | Side Frames Extended Kg | From Boom Point to Ground Meters |    |
|--------------------|---------------|--------------------|--------------------------|-------------------------|----------------------------------|----|
| 45.7M BOOM         | 8.5           | 80.8               | 31,540                   | 39,440                  | 47                               |    |
|                    | 9.0           | 80.3               | 29,300                   | 36,480                  | 47                               |    |
|                    | 10.0          | 79.0               | 25,440                   | 31,330                  | 47                               |    |
|                    | 11.0          | 77.7               | 22,360                   | 27,380                  | 47                               |    |
|                    | 12.0          | 76.4               | 19,890                   | 24,340                  | 47                               |    |
|                    | 13.0          | 75.1               | 17,860                   | 21,800                  | 46                               |    |
|                    | 14.0          | 73.8               | 16,160                   | 19,690                  | 46                               |    |
|                    | 15.0          | 72.5               | 14,740                   | 17,930                  | 46                               |    |
|                    | 16.0          | 71.2               | 13,500                   | 16,420                  | 45                               |    |
|                    | 17.0          | 69.9               | 12,520                   | 15,110                  | 45                               |    |
|                    | 18.0          | 68.5               | 11,580                   | 13,970                  | 45                               |    |
|                    | 19.0          | 67.2               | 10,760                   | 13,060                  | 44                               |    |
|                    | 20.0          | 65.8               | 10,020                   | 12,170                  | 44                               |    |
|                    | 7.3M MAST     | 22.0               | 63.0                     | 8,760                   | 10,660                           | 43 |
|                    |               | 24.0               | 60.2                     | 7,730                   | 9,440                            | 42 |
|                    |               | 26.0               | 57.2                     | 6,890                   | 8,420                            | 40 |
|                    |               | 28.0               | 54.2                     | 6,160                   | 7,560                            | 39 |
| 30.0               |               | 51.0               | 5,530                    | 6,820                   | 38                               |    |
| 32.0               |               | 47.7               | 5,000                    | 6,190                   | 36                               |    |
| 34.0               |               | 44.2               | 4,520                    | 5,630                   | 34                               |    |
| 36.0               |               | 40.4               | 4,100                    | 5,140                   | 32                               |    |
| 38.0               |               | 36.4               | 3,730                    | 4,710                   | 29                               |    |
| 40.0               |               | 31.9               | 3,410                    | 4,330                   | 26                               |    |
| 42.0               |               | 26.7               | 3,100                    | 3,970                   | 22                               |    |
| 44.0               | 20.4          | 2,830              | 3,660                    | 18                      |                                  |    |
| 48.8M BOOM         | 9.1           | 80.7               | 28,570                   | 35,570                  | 50                               |    |
|                    | 10.0          | 79.7               | 25,360                   | 31,250                  | 50                               |    |
|                    | 11.0          | 78.5               | 22,270                   | 27,290                  | 50                               |    |
|                    | 12.0          | 77.3               | 19,790                   | 24,250                  | 50                               |    |
|                    | 13.0          | 76.1               | 17,760                   | 21,710                  | 49                               |    |
|                    | 14.0          | 74.9               | 16,060                   | 19,600                  | 49                               |    |
|                    | 15.0          | 73.6               | 14,620                   | 17,820                  | 49                               |    |
|                    | 16.0          | 72.4               | 13,390                   | 16,310                  | 49                               |    |
|                    | 17.0          | 71.2               | 12,420                   | 15,000                  | 48                               |    |
|                    | 18.0          | 69.9               | 11,480                   | 13,870                  | 48                               |    |
|                    | 19.0          | 68.7               | 10,650                   | 12,960                  | 47                               |    |
|                    | 20.0          | 67.4               | 9,910                    | 12,070                  | 47                               |    |
|                    | 22.0          | 64.8               | 8,650                    | 10,560                  | 46                               |    |
|                    | 24.0          | 62.2               | 7,630                    | 9,340                   | 45                               |    |
|                    | 26.0          | 59.5               | 6,770                    | 8,320                   | 44                               |    |
|                    | 28.0          | 56.7               | 6,040                    | 7,450                   | 43                               |    |
|                    | 30.0          | 53.8               | 5,420                    | 6,710                   | 41                               |    |
| 32.0               | 50.9          | 4,880              | 6,080                    | 40                      |                                  |    |
| 34.0               | 47.8          | 4,410              | 5,520                    | 38                      |                                  |    |
| 36.0               | 44.5          | 4,000              | 5,040                    | 36                      |                                  |    |
| 38.0               | 41.0          | 3,620              | 4,600                    | 34                      |                                  |    |
| 40.0               | 37.3          | 3,290              | 4,220                    | 31                      |                                  |    |
| 42.0               | 33.2          | 2,990              | 3,860                    | 29                      |                                  |    |
| 44.0               | 28.5          | 2,720              | 3,550                    | 25                      |                                  |    |
| 46.0               | 23.1          | 2,480              | 3,260                    | 21                      |                                  |    |
| 48.0               | 16.0          | 2,250              | 3,000                    | 15                      |                                  |    |
| 51.8M BOOM         | 9.4           | 80.9               | 27,210                   | 33,270 *                | 53                               |    |
|                    | 10.0          | 80.3               | 25,260                   | 31,160                  | 53                               |    |
|                    | 11.0          | 79.2               | 22,170                   | 27,200                  | 53                               |    |
|                    | 12.0          | 78.0               | 19,710                   | 24,170                  | 53                               |    |
|                    | 13.0          | 76.9               | 17,670                   | 21,620                  | 53                               |    |
|                    | 14.0          | 75.8               | 15,980                   | 19,510                  | 52                               |    |
|                    | 15.0          | 74.6               | 14,540                   | 17,740                  | 52                               |    |
|                    | 16.0          | 73.5               | 13,300                   | 16,220                  | 52                               |    |
|                    | 17.0          | 72.3               | 12,330                   | 14,920                  | 51                               |    |
|                    | 18.0          | 71.2               | 11,390                   | 13,780                  | 51                               |    |
|                    | 19.0          | 70.0               | 10,560                   | 12,870                  | 51                               |    |
|                    | 20.0          | 68.8               | 9,830                    | 11,990                  | 50                               |    |
|                    | 22.0          | 66.4               | 8,580                    | 10,480                  | 50                               |    |
|                    | 24.0          | 64.0               | 7,550                    | 9,250                   | 49                               |    |
|                    | 26.0          | 61.5               | 6,690                    | 8,230                   | 48                               |    |
|                    | 28.0          | 58.9               | 5,960                    | 7,370                   | 46                               |    |
|                    | 30.0          | 56.3               | 5,340                    | 6,640                   | 45                               |    |
| 32.0               | 53.6          | 4,800              | 6,000                    | 44                      |                                  |    |
| 34.0               | 50.8          | 4,320              | 5,440                    | 42                      |                                  |    |
| 36.0               | 47.8          | 3,910              | 4,960                    | 40                      |                                  |    |
| 38.0               | 44.8          | 3,540              | 4,520                    | 38                      |                                  |    |
| 40.0               | 41.5          | 3,200              | 4,120                    | 36                      |                                  |    |
| 42.0               | 38.0          | 2,910              | 3,780                    | 34                      |                                  |    |
| 44.0               | 34.3          | 2,640              | 3,470                    | 31                      |                                  |    |
| 46.0               | 30.1          | 2,390              | 3,180                    | 28                      |                                  |    |
| 48.0               | 25.3          | 2,170              | 2,920                    | 24                      |                                  |    |
| 50.0               | 19.4          | 1,960              | 2,680                    | 19                      |                                  |    |

| Boom & Mast Length | Radius Meters | Boom Angle Degrees | Side Frames Retracted Kg | Side Frames Extended Kg | From Boom Point to Ground Meters |    |
|--------------------|---------------|--------------------|--------------------------|-------------------------|----------------------------------|----|
| 54.9M BOOM         | 10.1          | 80.8               | 24,980                   | 29,050 *                | 56                               |    |
|                    | 11.0          | 79.8               | 22,080                   | 27,110                  | 56                               |    |
|                    | 12.0          | 78.7               | 19,600                   | 24,080                  | 56                               |    |
|                    | 13.0          | 77.7               | 17,570                   | 21,530                  | 56                               |    |
|                    | 14.0          | 76.6               | 15,870                   | 19,410                  | 55                               |    |
|                    | 15.0          | 75.5               | 14,430                   | 17,640                  | 55                               |    |
|                    | 16.0          | 74.4               | 13,200                   | 16,130                  | 55                               |    |
|                    | 17.0          | 73.3               | 12,240                   | 14,820                  | 55                               |    |
|                    | 18.0          | 72.2               | 11,290                   | 13,680                  | 54                               |    |
|                    | 19.0          | 71.1               | 10,460                   | 12,760                  | 54                               |    |
|                    | 20.0          | 70.0               | 9,720                    | 11,890                  | 54                               |    |
|                    | 22.0          | 67.8               | 8,470                    | 10,380                  | 53                               |    |
|                    | 24.0          | 65.5               | 7,430                    | 9,150                   | 52                               |    |
|                    | 7.3M MAST     | 26.0               | 63.2                     | 6,570                   | 8,120                            | 51 |
|                    |               | 28.0               | 60.8                     | 5,850                   | 7,270                            | 50 |
|                    |               | 30.0               | 58.4                     | 5,230                   | 6,530                            | 49 |
|                    |               | 32.0               | 55.9                     | 4,680                   | 5,890                            | 47 |
| 34.0               |               | 53.3               | 4,210                    | 5,330                   | 46                               |    |
| 36.0               |               | 50.7               | 3,800                    | 4,840                   | 44                               |    |
| 38.0               |               | 47.9               | 3,420                    | 4,400                   | 43                               |    |
| 40.0               |               | 45.0               | 3,100                    | 4,020                   | 41                               |    |
| 42.0               |               | 42.0               | 2,790                    | 3,670                   | 39                               |    |
| 44.0               |               | 38.7               | 2,520                    | 3,350                   | 36                               |    |
| 46.0               |               | 35.2               | 2,280                    | 3,070                   | 34                               |    |
| 48.0               | 31.4          | 2,060              | 2,810                    | 31                      |                                  |    |
| 50.0               | 27.1          | 1,840              | 2,560                    | 27                      |                                  |    |
| 52.0               | 22.0          | 1,660              | 2,340                    | 23                      |                                  |    |
| 54.0               | 15.5          | 1,490              | 2,150                    | 17                      |                                  |    |
| 57.9M BOOM         | 10.4          | 81.0               | 23,880                   | 25,390 *                | 59                               |    |
|                    | 11.0          | 80.3               | 21,990                   | 25,210 *                | 59                               |    |
|                    | 12.0          | 79.3               | 19,510                   | 23,990                  | 59                               |    |
|                    | 13.0          | 78.3               | 17,470                   | 21,440                  | 59                               |    |
|                    | 14.0          | 77.3               | 15,770                   | 19,320                  | 59                               |    |
|                    | 15.0          | 76.3               | 14,330                   | 17,540                  | 58                               |    |
|                    | 16.0          | 75.3               | 13,210                   | 16,020                  | 58                               |    |
|                    | 17.0          | 74.2               | 12,130                   | 14,710                  | 58                               |    |
|                    | 18.0          | 73.2               | 11,190                   | 13,580                  | 57                               |    |
|                    | 19.0          | 72.2               | 10,360                   | 12,680                  | 57                               |    |
|                    | 20.0          | 71.1               | 9,620                    | 11,790                  | 57                               |    |
|                    | 22.0          | 69.0               | 8,360                    | 10,280                  | 56                               |    |
|                    | 7.3M MAST     | 24.0               | 66.9                     | 7,330                   | 9,040                            | 55 |
|                    |               | 26.0               | 64.7                     | 6,480                   | 8,030                            | 54 |
|                    |               | 28.0               | 62.5                     | 5,750                   | 7,170                            | 53 |
|                    |               | 30.0               | 60.2                     | 5,120                   | 6,430                            | 52 |
|                    |               | 32.0               | 57.9                     | 4,580                   | 5,780                            | 51 |
| 34.0               |               | 55.5               | 4,110                    | 5,230                   | 50                               |    |
| 36.0               |               | 53.1               | 3,690                    | 4,740                   | 48                               |    |
| 38.0               |               | 50.6               | 3,320                    | 4,300                   | 47                               |    |
| 40.0               |               | 48.0               | 2,990                    | 3,920                   | 45                               |    |
| 42.0               |               | 45.2               | 2,690                    | 3,570                   | 43                               |    |
| 44.0               |               | 42.3               | 2,410                    | 3,250                   | 41                               |    |
| 46.0               | 39.3          | 2,170              | 2,960                    | 39                      |                                  |    |
| 48.0               | 36.1          | 1,950              | 2,710                    | 36                      |                                  |    |
| 50.0               | 32.5          | 1,740              | 2,460                    | 33                      |                                  |    |
| 52.0               | 28.6          | 1,560              | 2,250                    | 30                      |                                  |    |
| 54.0               | 24.1          | 1,390              | 2,050                    | 26                      |                                  |    |
| 56.0               | 18.7          | 1,230              | 1,860                    | 20                      |                                  |    |
| 61.0M BOOM         | 11.0          | 80.8               | 21,890                   | 22,350 *                | 62                               |    |
|                    | 12.0          | 79.9               | 19,410                   | 22,050 *                | 62                               |    |
|                    | 13.0          | 78.9               | 17,370                   | 21,350                  | 62                               |    |
|                    | 14.0          | 77.9               | 15,670                   | 19,230                  | 62                               |    |
|                    | 15.0          | 77.0               | 14,220                   | 17,450                  | 61                               |    |
|                    | 16.0          | 76.0               | 13,100                   | 15,920                  | 61                               |    |
|                    | 17.0          | 75.0               | 12,030                   | 14,610                  | 61                               |    |
|                    | 18.0          | 74.1               | 11,090                   | 13,470                  | 61                               |    |
|                    | 19.0          | 73.1               | 10,250                   | 12,580                  | 60                               |    |
|                    | 20.0          | 72.1               | 9,510                    | 11,680                  | 60                               |    |
|                    | 22.0          | 70.1               | 8,260                    | 10,180                  | 59                               |    |
|                    | 7.3M MAST     | 24.0               | 68.1                     | 7,230                   | 8,950                            | 59 |
|                    |               | 26.0               | 66.1                     | 6,370                   | 7,920                            | 58 |
|                    |               | 28.0               | 64.0                     | 5,630                   | 7,050                            | 57 |
|                    |               | 30.0               | 61.9                     | 5,010                   | 6,310                            | 56 |
|                    |               | 32.0               | 59.7                     | 4,470                   | 5,680                            | 55 |
|                    |               | 34.0               | 57.5                     | 4,000                   | 5,120                            | 53 |
| 36.0               |               | 55.2               | 3,570                    | 4,630                   | 52                               |    |
| 38.0               |               | 52.9               | 3,200                    | 4,190                   | 51                               |    |
| 40.0               |               | 50.5               | 2,870                    | 3,800                   | 49                               |    |
| 42.0               |               | 48.0               | 2,570                    | 3,450                   | 47                               |    |

| Boom & Mast Length | Radius Meters     | Boom Angle Degrees | Side Frames Retracted Kg | Side Frames Extended Kg | From Boom Point to Ground Meters |    |
|--------------------|-------------------|--------------------|--------------------------|-------------------------|----------------------------------|----|
| 61.0M BOOM         | 44.0              | 45.4               | 2,300                    | 3,140                   | 45                               |    |
|                    | 46.0              | 42.7               | 2,050                    | 2,850                   | 43                               |    |
|                    | 48.0              | 39.8               | 1,830                    | 2,580                   | 41                               |    |
|                    | 50.0              | 36.8               | 1,630                    | 2,350                   | 38                               |    |
|                    | 7.3M MAST (cont.) | 52.0               | 33.5                     | 1,440                   | 2,130                            | 36 |
|                    |                   | 54.0               | 29.9                     | 1,260                   | 1,920                            | 32 |
|                    |                   | 56.0               | 25.9                     | 1,100                   | 1,740                            | 29 |
|                    |                   | 58.0               | 21.1                     |                         | 1,570                            | 24 |
|                    |                   | 60.0               | 15.0                     |                         | 1,400                            | 18 |
| 64.0M BOOM         | 11.6              | 80.7               | 19,780 *                 | 19,780 *                | 65                               |    |
|                    | 12.0              | 80.3               | 19,310                   | 19,640 *                | 65                               |    |
|                    | 13.0              | 79.4               | 17,270                   | 19,330 *                | 65                               |    |
|                    | 14.0              | 78.5               | 15,560                   | 18,870 *                | 65                               |    |
|                    | 15.0              | 77.6               | 14,130                   | 17,350                  | 65                               |    |
|                    | 16.0              | 76.7               | 13,020                   | 15,830                  | 64                               |    |
|                    | 17.0              | 75.8               | 11,940                   | 14,520                  | 64                               |    |
|                    | 18.0              | 74.8               | 11,000                   | 13,370                  | 64                               |    |
|                    | 19.0              | 73.9               | 10,170                   | 12,490                  | 64                               |    |
|                    | 20.0              | 73.0               | 9,430                    | 11,600                  | 63                               |    |
|                    | 22.0              | 71.1               | 8,160                    | 10,080                  | 63                               |    |
|                    | 24.0              | 69.2               | 7,130                    | 8,850                   | 62                               |    |
|                    | 26.0              | 67.3               | 6,270                    | 7,820                   | 61                               |    |
|                    | 28.0              | 65.3               | 5,540                    | 6,960                   | 60                               |    |
|                    | 30.0              | 63.3               | 4,920                    | 6,230                   | 59                               |    |
|                    | 7.3M MAST         | 32.0               | 61.3                     | 4,380                   | 5,590                            | 58 |
|                    |                   | 34.0               | 59.2                     | 3,900                   | 5,020                            | 57 |
| 36.0               |                   | 57.1               | 3,480                    | 4,530                   | 56                               |    |
| 38.0               |                   | 54.9               | 3,110                    | 4,100                   | 54                               |    |
| 40.0               |                   | 52.7               | 2,780                    | 3,710                   | 53                               |    |
| 42.0               |                   | 50.4               | 2,470                    | 3,360                   | 51                               |    |
| 44.0               |                   | 48.1               | 2,210                    | 3,050                   | 50                               |    |
| 46.0               |                   | 45.6               | 1,960                    | 2,750                   | 48                               |    |
| 48.0               |                   | 43.0               | 1,740                    | 2,500                   | 46                               |    |
| 50.0               |                   | 40.3               | 1,530                    | 2,250                   | 43                               |    |
| 52.0               |                   | 37.5               | 1,350                    | 2,040                   | 41                               |    |
| 54.0               | 34.4              | 1,170              | 1,830                    | 38                      |                                  |    |
| 56.0               | 31.1              | 1,010              | 1,650                    | 35                      |                                  |    |
| 58.0               | 27.4              |                    | 1,480                    | 31                      |                                  |    |
| 60.0               | 23.1              |                    | 1,310                    | 27                      |                                  |    |
| 62.0               | 18.0              |                    | 1,170                    | 22                      |                                  |    |
| 64.0               | 10.7              |                    | 1,030                    | 14                      |                                  |    |
| 67.1M BOOM         | 11.9              | 80.9               | 17,560 *                 | 17,560 *                | 68                               |    |
|                    | 12.0              | 80.8               | 17,560 *                 | 17,560 *                | 68                               |    |
|                    | 13.0              | 79.9               | 17,170                   | 17,280 *                | 68                               |    |
|                    | 14.0              | 79.1               | 15,460                   | 16,730 *                | 68                               |    |
|                    | 15.0              | 78.2               | 14,020                   | 16,430 *                | 68                               |    |
|                    | 16.0              | 77.3               | 12,910                   | 15,720                  | 67                               |    |
|                    | 17.0              | 76.4               | 11,840                   | 14,410                  | 67                               |    |
|                    | 18.0              | 75.6               | 10,890                   | 13,260                  | 67                               |    |
|                    | 19.0              | 74.7               | 10,060                   | 12,390                  | 67                               |    |
|                    | 20.0              | 73.8               | 9,320                    | 11,500                  | 66                               |    |
|                    | 22.0              | 72.0               | 8,050                    | 9,980                   | 66                               |    |
|                    | 24.0              | 70.2               | 7,020                    | 8,740                   | 65                               |    |
|                    | 26.0              | 68.3               | 6,160                    | 7,720                   | 64                               |    |
|                    | 28.0              | 66.5               | 5,430                    | 6,860                   | 64                               |    |
|                    | 30.0              | 64.6               | 4,800                    | 6,110                   | 63                               |    |
|                    | 7.3M MAST         | 32.0               | 62.7                     | 4,260                   | 5,470                            | 62 |
|                    |                   | 34.0               | 60.8                     | 3,780                   | 4,910                            | 61 |
| 36.0               |                   | 58.8               | 3,370                    | 4,430                   | 59                               |    |
| 38.0               |                   | 56.7               | 3,000                    | 3,990                   | 58                               |    |
| 40.0               |                   | 54.7               | 2,660                    | 3,590                   | 57                               |    |
| 42.0               |                   | 52.5               | 2,360                    | 3,240                   | 55                               |    |
| 44.0               |                   | 50.4               | 2,090                    | 2,930                   | 54                               |    |
| 46.0               |                   | 48.1               | 1,840                    | 2,640                   | 52                               |    |
| 48.0               |                   | 45.8               | 1,620                    | 2,380                   | 50                               |    |
| 50.0               |                   | 43.3               | 1,410                    | 2,140                   | 48                               |    |
| 52.0               |                   | 40.8               | 1,220                    | 1,910                   | 46                               |    |
| 54.0               | 38.0              | 1,050              | 1,720                    | 43                      |                                  |    |
| 56.0               | 35.2              |                    | 1,530                    | 41                      |                                  |    |
| 58.0               | 32.1              |                    | 1,350                    | 38                      |                                  |    |
| 60.0               | 28.7              |                    | 1,200                    | 34                      |                                  |    |
| 62.0               | 24.9              |                    | 1,050                    | 30                      |                                  |    |

# LIFT RATINGS IN KILOGRAMS

With 59H Open Throat Boom, 7.3M Floating Mast and 23,134 Kg Counterweight Fully Retracted

| Boom & Mast Length | Radius Meters | Boom Angle Degrees | Side Frames Retracted Kg | Side Frames Extended Kg | From Boom Point to Ground Meters |
|--------------------|---------------|--------------------|--------------------------|-------------------------|----------------------------------|
| 70.1M BOOM         | 12.5          | 80.8               | 15,450 *                 | 15,450 *                | 71                               |
|                    | 13.0          | 80.4               | 15,210 *                 | 15,210 *                | 71                               |
|                    | 14.0          | 79.5               | 14,960 *                 | 14,960 *                | 71                               |
|                    | 15.0          | 78.7               | 13,910                   | 14,730 *                | 71                               |
|                    | 16.0          | 77.9               | 12,810                   | 14,290 *                | 71                               |
|                    | 17.0          | 77.0               | 11,730                   | 13,800 *                | 70                               |
|                    | 18.0          | 76.2               | 10,790                   | 13,160                  | 70                               |
|                    | 19.0          | 75.3               | 9,950                    | 12,290                  | 70                               |
|                    | 20.0          | 74.5               | 9,210                    | 11,390                  | 70                               |
|                    | 22.0          | 72.8               | 7,960                    | 9,880                   | 69                               |
| 7.3M MAST          | 24.0          | 71.1               | 6,920                    | 8,650                   | 68                               |
|                    | 26.0          | 69.3               | 6,060                    | 7,620                   | 68                               |
|                    | 28.0          | 67.6               | 5,320                    | 6,750                   | 67                               |
|                    | 30.0          | 65.8               | 4,700                    | 6,010                   | 66                               |
|                    | 32.0          | 64.0               | 4,150                    | 5,360                   | 65                               |
|                    | 34.0          | 62.2               | 3,680                    | 4,810                   | 64                               |
|                    | 36.0          | 60.3               | 3,260                    | 4,320                   | 63                               |
|                    | 38.0          | 58.4               | 2,890                    | 3,880                   | 62                               |
|                    | 40.0          | 56.4               | 2,550                    | 3,480                   | 60                               |
|                    | 42.0          | 54.4               | 2,260                    | 3,140                   | 59                               |

| Boom & Mast Length | Radius Meters | Boom Angle Degrees | Side Frames Retracted Kg | Side Frames Extended Kg | From Boom Point to Ground Meters |
|--------------------|---------------|--------------------|--------------------------|-------------------------|----------------------------------|
| 70.1M BOOM         | 44.0          | 52.4               | 1,980                    | 2,820                   | 58                               |
|                    | 46.0          | 50.3               | 1,730                    | 2,530                   | 56                               |
|                    | 48.0          | 48.1               | 1,510                    | 2,270                   | 54                               |
|                    | 50.0          | 45.9               | 1,300                    | 2,030                   | 52                               |
|                    | 52.0          | 43.6               | 1,120                    | 1,820                   | 50                               |
|                    | 54.0          | 41.1               |                          | 1,610                   | 48                               |
| 7.3M MAST (cont.)  | 56.0          | 38.6               |                          | 1,430                   | 46                               |
|                    | 58.0          | 35.9               |                          | 1,250                   | 43                               |
|                    | 60.0          | 33.0               |                          | 1,090                   | 40                               |
| 73.2M BOOM         | 12.8          | 80.9               | 13,530 *                 | 13,530 *                | 74                               |
|                    | 13.0          | 80.8               | 13,500 *                 | 13,500 *                | 74                               |
|                    | 14.0          | 80.0               | 12,670 *                 | 12,670 *                | 74                               |
|                    | 15.0          | 79.2               | 11,920 *                 | 11,920 *                | 74                               |
|                    | 16.0          | 78.4               | 11,780 *                 | 11,780 *                | 74                               |
|                    | 17.0          | 77.6               | 11,640 *                 | 11,650 *                | 74                               |
| 7.3M MAST          | 18.0          | 76.8               | 10,690                   | 11,020 *                | 73                               |
|                    | 19.0          | 76.0               | 9,850                    | 10,930 *                | 73                               |
|                    | 20.0          | 75.2               | 9,110                    | 10,850 *                | 73                               |
|                    | 22.0          | 73.5               | 7,840                    | 9,780                   | 72                               |

| Boom & Mast Length | Radius Meters | Boom Angle Degrees | Side Frames Retracted Kg | Side Frames Extended Kg | From Boom Point to Ground Meters |
|--------------------|---------------|--------------------|--------------------------|-------------------------|----------------------------------|
| 73.2M BOOM         | 24.0          | 71.9               | 6,810                    | 8,540                   | 72                               |
|                    | 26.0          | 70.2               | 5,940                    | 7,510                   | 71                               |
|                    | 28.0          | 68.6               | 5,210                    | 6,640                   | 70                               |
|                    | 30.0          | 66.9               | 4,590                    | 5,900                   | 69                               |
|                    | 32.0          | 65.1               | 4,040                    | 5,260                   | 68                               |
|                    | 34.0          | 63.4               | 3,560                    | 4,700                   | 67                               |
|                    | 36.0          | 61.6               | 3,140                    | 4,200                   | 66                               |
|                    | 38.0          | 59.8               | 2,770                    | 3,760                   | 65                               |
|                    | 40.0          | 58.0               | 2,440                    | 3,380                   | 64                               |
|                    | 42.0          | 56.1               | 2,140                    | 3,020                   | 63                               |
| 7.3M MAST (cont.)  | 44.0          | 54.2               | 1,860                    | 2,700                   | 61                               |
|                    | 46.0          | 52.3               | 1,620                    | 2,420                   | 60                               |
|                    | 48.0          | 50.3               | 1,390                    | 2,150                   | 58                               |
|                    | 50.0          | 48.2               | 1,180                    | 1,910                   | 56                               |
|                    | 52.0          | 46.0               | 1,000                    | 1,700                   | 55                               |
|                    | 54.0          | 43.8               |                          | 1,490                   | 53                               |
|                    | 56.0          | 41.5               |                          | 1,310                   | 50                               |
|                    | 58.0          | 39.1               |                          | 1,130                   | 48                               |



**WARNING**

## CRANE RATING DATA

These lift ratings are invalid if the crane has been modified or altered by use of other than **GENUINE AMERICAN PARTS** as such modifications or alterations may affect its capacity or safe operation. See American Crane Corporation Service Bulletin #259.

The ratings in this chart are for planning purposes only. Only those ratings specifically assigned to a crane and mounted in the operator's cab or in the Operator's Manual should be used for actual operation.

Ratings in this chart are in POUNDS (Kgs) and do not exceed the percentage of tipping specified for this crane by ANSI B30.5. All ratings require that the crane be standing level on a firm uniformly supporting surface.

Do not lift loads in excess of those shown on this chart. Lifting loads in excess of those shown or operation not in accordance with good operating practice, including limitations shown on page 3499 of Operator's Manual, can cause tipping, structural damage or catastrophic failure.

Asterisk (\*) areas on this chart indicate ratings which are limited by strength of material or factors other than stability (tipping).

"RADIUS IN FEET" is the horizontal distance at ground level from the crane centerline of rotation to a vertical line through the center of gravity of the suspended load.

When using the main boom fall with jib in place, the main fall ratings must be reduced by the jib effective weight shown on the jib rating chart plus twice the weight of all suspended blocks, slings, rope, etc., at the jib fall. See Appendix A.

When using the main boom fall with boom tip extension in place, the main fall ratings must be reduced by the weight of the boom tip extension plus twice the weight of all suspended blocks, slings, rope, etc., at the boom tip extension fall. See Appendix A.

Blocks, slings, buckets and other load carrying devices are considered part of the load. The weight of standard hoisting ropes for the rating at a given radius has been calculated as part of the boom point load and need not be considered in determining net allowable loads. See Appendix A.

This chart was developed exclusively for use with a boom only. Under no circumstances are these ratings to be interpreted for use with a jib.

Ratings shown on this chart make no allowance for such factors as out of plumb loads, wind, poor soil conditions, improper inflation of rubber tires and dynamic effects due to excessive operating speeds. The user (operator) must exercise judgement to make allowance for these conditions. See page 3499 of Operator's Manual for detailed information.

No account is taken of the wind force on the load. This effect, which can be substantial for loads with large surface areas, must be considered by the user. In any wind it is strongly recommended that taglines be used to control the load.

MAST HOIST LINE is 17 parts of .75 inch (19 mm) diameter 6 X 26, WS, FW, RAL, IWRC, EIPS wire rope with a minimum breaking strength of 58,800 pounds (26,672 Kg).

PENDANT SUSPENSION LINE is 2 parts of 1.375 inch (35 mm) diameter EEIPS wire rope with a minimum breaking strength of 211,000 pounds (95,710 Kg).

MAIN LOAD LINE is 1 inch (25 mm) diameter 6 X 25, RRL, IWRC, EIPS wire rope with a minimum breaking strength of 103,400 pounds (46,901 Kg).

Erection "OVER THE END" is with the boom over the idler end with idler tumblers blocked (See Operator's Manual for blocking instructions). Erection "OVER THE SIDE" is with the boom 90° to the side frames and with the side frames extended. Blocks, slings and other load carrying devices must be on the ground during erection.

## LOAD HOISTING INFORMATION

| MAXIMUM LIFTING CAPACITY IN POUNDS | MINIMUM PARTS OF LINE | MAXIMUM HOISTING DISTANCE IN FEET |             |
|------------------------------------|-----------------------|-----------------------------------|-------------|
|                                    |                       | MAIN (FRONT)                      | AUX. (REAR) |
| 250,000                            | 9                     | 160                               | 160         |
| 236,000                            | 8                     | 180                               | 180         |
| 206,500                            | 7                     | 200                               | 200         |
| 177,000                            | 6                     | 240                               | 240         |
| 147,500                            | 5                     | 290                               | 290         |
| 118,000                            | 4                     | 360                               | 360         |
| 88,500                             | 3                     | 480                               | 480         |
| 59,000                             | 2                     | 730                               | 730         |
| 29,500                             | 1                     | 1,460                             | 1,460       |

| MAXIMUM LIFTING CAPACITY IN KILOGRAMS | MINIMUM PARTS OF LINE | MAXIMUM HOISTING DISTANCE IN METERS |             |
|---------------------------------------|-----------------------|-------------------------------------|-------------|
|                                       |                       | MAIN (FRONT)                        | AUX. (REAR) |
| 113,400                               | 9                     | 49                                  | 49          |
| 107,049                               | 8                     | 55                                  | 55          |
| 93,668                                | 7                     | 61                                  | 61          |
| 80,287                                | 6                     | 73                                  | 73          |
| 66,906                                | 5                     | 88                                  | 88          |
| 53,524                                | 4                     | 110                                 | 110         |
| 40,143                                | 3                     | 146                                 | 146         |
| 26,762                                | 2                     | 223                                 | 223         |
| 13,381                                | 1                     | 445                                 | 445         |

## BOOM COMPOSITION CHART

| BOOM LENGTH |        | 25'<br>(7.6M)<br>59H | 10'<br>(3.0M)<br>59H | 20'<br>(6.1M)<br>59H | 40'<br>(12.2M)<br>59H | 25'<br>(7.6M)<br>59H |
|-------------|--------|----------------------|----------------------|----------------------|-----------------------|----------------------|
| FEET        | METERS | INNER                | CENTER               | CENTER               | CENTER                | OUTER                |
| 50          | 15.2   | 1                    | 0                    | 0                    | 0                     | 1                    |
| 60          | 18.3   | 1                    | 1                    | 0                    | 0                     | 1                    |
| 70          | 21.3   | 1                    | 0                    | 1                    | 0                     | 1                    |
| 80          | 24.4   | 1                    | 1                    | 1                    | 0                     | 1                    |
| 90          | 27.4   | 1                    | 0                    | 0                    | 1                     | 1                    |
| 100         | 30.5   | 1                    | 1                    | 0                    | 1                     | 1                    |
| 110         | 33.5   | 1                    | 0                    | 1                    | 1                     | 1                    |
| 120         | 36.6   | 1                    | 1                    | 1                    | 1                     | 1                    |
| 130         | 39.6   | 1                    | 0                    | 0                    | 2                     | 1                    |
| 140         | 42.7   | 1                    | 1                    | 0                    | 2                     | 1                    |

| BOOM LENGTH |        | 25'<br>(7.6M)<br>59H | 10'<br>(3.0M)<br>59H | 20'<br>(6.1M)<br>59H | 40'<br>(12.2M)<br>59H | 25'<br>(7.6M)<br>59H |
|-------------|--------|----------------------|----------------------|----------------------|-----------------------|----------------------|
| FEET        | METERS | INNER                | CENTER               | CENTER               | CENTER                | OUTER                |
| 150         | 45.7   | 1                    | 0                    | 1                    | 2                     | 1                    |
| 160         | 48.8   | 1                    | 1                    | 1                    | 2                     | 1                    |
| 170         | 51.8   | 1                    | 0                    | 0                    | 3                     | 1                    |
| 180         | 54.9   | 1                    | 1                    | 0                    | 3                     | 1                    |
| 190         | 57.9   | 1                    | 0                    | 1                    | 3                     | 1                    |
| 200         | 61.0   | 1                    | 1                    | 1                    | 3                     | 1                    |
| 210         | 64.0   | 1                    | 0                    | 0                    | 4                     | 1                    |
| 220         | 67.1   | 1                    | 1                    | 0                    | 4                     | 1                    |
| 230         | 70.1   | 1                    | 0                    | 1                    | 4                     | 1                    |
| 240         | 73.2   | 1                    | 1                    | 1                    | 4                     | 1                    |

## MAXIMUM BOOM & JIB SELF-ERECTION DATA

| JIB         | OVER THE END |        |            |        | OVER THE SIDE |        |            |        |
|-------------|--------------|--------|------------|--------|---------------|--------|------------|--------|
|             | BOOM LENGTH  |        | JIB LENGTH |        | BOOM LENGTH   |        | JIB LENGTH |        |
|             | FEET         | METERS | FEET       | METERS | FEET          | METERS | FEET       | METERS |
| <b>#9HL</b> | 240          | 73.2   | 0          | 0.0    | 230           | 70.1   | 0          | 0.0    |
|             | 230          | 70.1   | 40         | 12.2   | 220           | 67.1   | 0          | 0.0    |
|             | 220          | 67.1   | 80         | 24.4   | 210           | 64.0   | 40         | 12.2   |
|             |              |        |            |        | 200           | 61.0   | 50         | 15.2   |
|             |              |        |            | 190    | 57.9          | 60     | 18.3       |        |
|             |              |        |            | 180    | 54.9          | 70     | 21.3       |        |

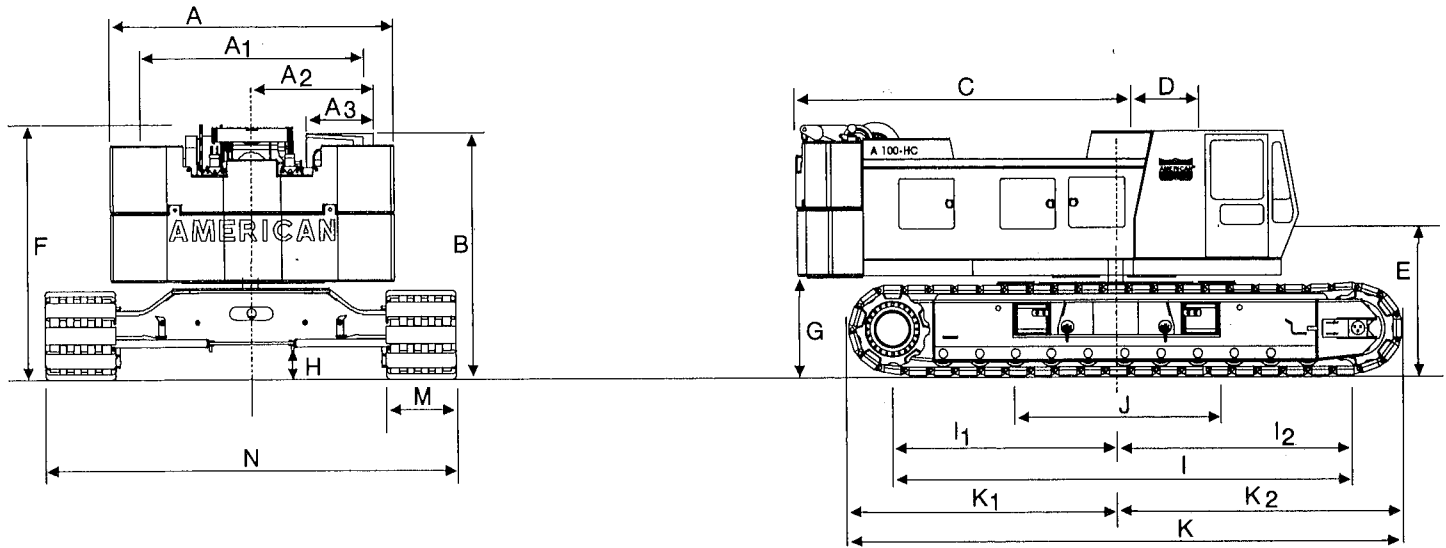
## WEIGHTS

|                                                                                                                                             | LBS.    | KG.    |
|---------------------------------------------------------------------------------------------------------------------------------------------|---------|--------|
| Lifting Crane with standard counterweight,<br>50' (15.2mm) boom with offset tip, transport package,<br>3rd drum and 38" (965mm) shoes ..... | 209,740 | 95,137 |
| Lifting crane equipped as above and<br>44" (1117mm) shoes .....                                                                             | 213,030 | 96,629 |
| <b>Counterweight</b> Including: .....                                                                                                       | 52,150  |        |
| Basic .....                                                                                                                                 | 31,000  |        |
| Overlay .....                                                                                                                               | 20,000  |        |
| 2 Removal Cylinders .....                                                                                                                   | 1,150   |        |
| Crane boom outer (five sheave) .....                                                                                                        | 3,260   | 1,480  |
| Crane boom inner (and misc.) .....                                                                                                          | 4,345   | 1,971  |
| Crawler side frames 38"(965 mm) shoes .....                                                                                                 | 70,590  | 32,020 |
| Crawler Side Frames 44" (1,117mm) shoes .....                                                                                               | 73,880  | 33,500 |
| Travel weight includes upper, carbody, transportation<br>package, boom inner, counterweight handling sheaves<br>and third drum .....        | 83,740  | 37,985 |
| Second swing motor .....                                                                                                                    | 580     | 263    |

## GROUND PRESSURES

Lifting crane with 50 ft. (15.2 mm)  
boom with offset tip and standard  
counterweight.

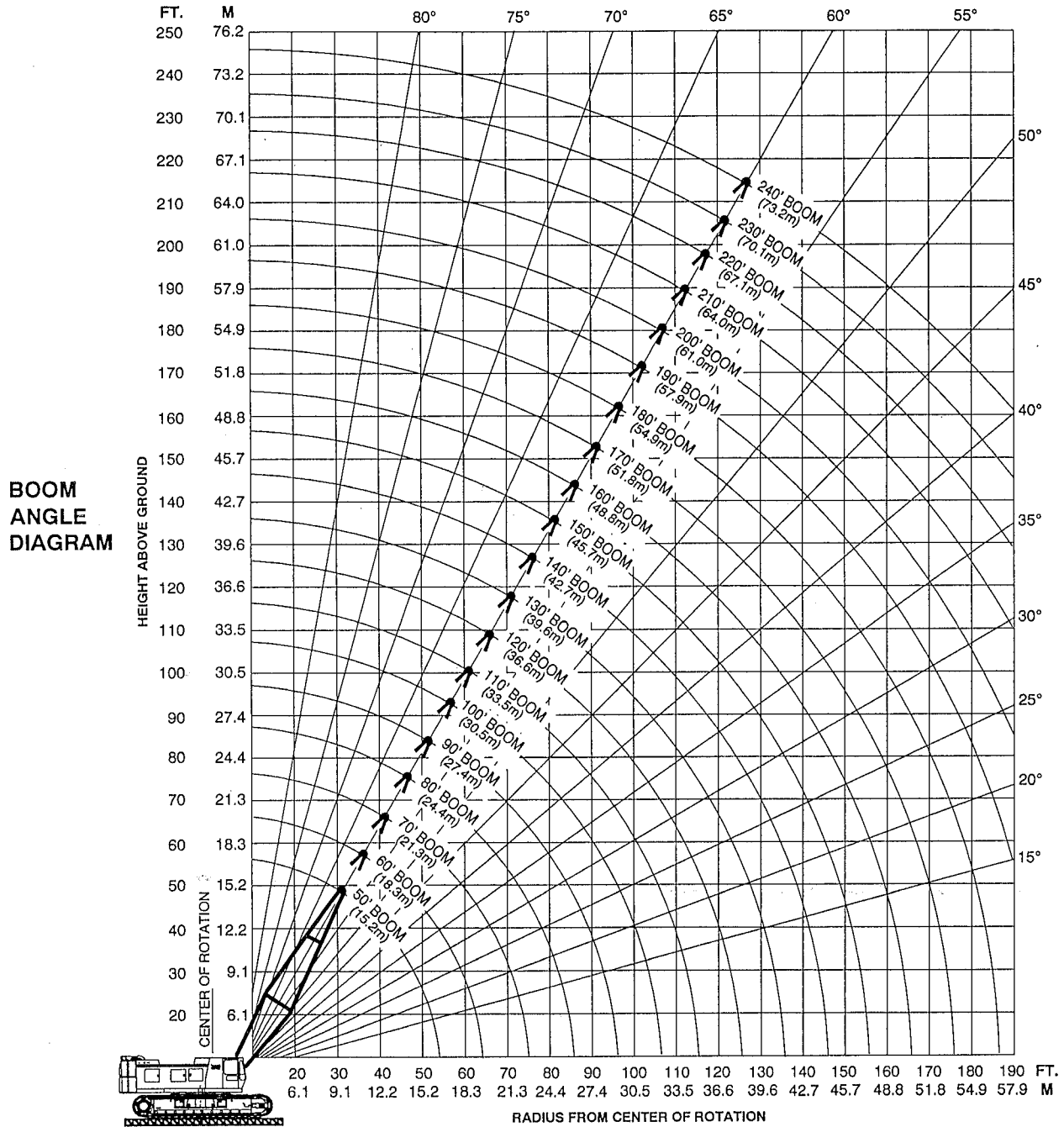
|                     |                       |
|---------------------|-----------------------|
| <b>38" (965 mm)</b> | <b>44" (1,117 mm)</b> |
| <b>shoes</b>        | <b>shoes</b>          |
| <b>10.5 PSI</b>     | <b>9.03 PSI</b>       |



## A 100-HC HYDRAULIC CRAWLER CRANE GENERAL DIMENSIONS

|                | FEET                                                     | MM               |       | FEET           | MM                                                 |                  |       |
|----------------|----------------------------------------------------------|------------------|-------|----------------|----------------------------------------------------|------------------|-------|
| A              | Width of counterweight .....                             | 14'-0" ....      | 4,267 | I <sub>2</sub> | Center of idler tumbler to center of rotation..... | 10'-11-5/8" .... | 3,342 |
| A <sub>1</sub> | Width of machinery cab .....                             | 11'-5" ....      | 3,480 | J              | Width of carbody (including vertical jacks) .....  | 10'-10" ....     | 3,300 |
| A <sub>2</sub> | Centerline of machine to outside of operator's cab ..... | 6'-0" ....       | 1,829 | K              | Overall length of crawlers .....                   | 24'-7- 9/16" ... | 7,507 |
| A <sub>3</sub> | Width of operator's cab .....                            | 3'-4" ....       | 1,016 | K <sub>1</sub> | Over drive tumbler to center of rotation .....     | 12'-0 1/2" ....  | 3,670 |
| B              | Height over operator's cab .....                         | 12'-0" ....      | 3,658 | K <sub>2</sub> | Over idler tumbler to center of rotation .....     | 12'-7 1/16" .... | 3,836 |
| C              | Tail swing w/WorkHorse retracted .....                   | 16'-3" ....      | 4,953 | M              | Width of tread shoe (standard) .....               | 38" ....         | 965   |
| D              | Center rotation to boom feet .....                       | 3'-6" ....       | 1,066 |                | (optional).....                                    | 44" ....         | 1,118 |
| E              | Ground to center of boom foot .....                      | 6'-8" ....       | 2,032 | N              | Overall width of crawlers                          |                  |       |
| F              | Height over boom hoist .....                             | 12' 3-9/16" .... | 3,748 |                | 38" (966 mm) shoes retracted.....                  | 15'-2" ....      | 4,623 |
| G              | Ground to bottom of counterweight ....                   | 4'-6-3/4" ....   | 1,391 |                | 38" (966 mm) shoes extended .....                  | 18'-5" ....      | 5,613 |
| H              | Minimum ground clearance .....                           | 1'-7 1/2" ....   | 495   |                | 44" (1,118 mm) shoes retracted .....               | 15'-8" ....      | 4,775 |
| I              | Center to center of crawler tumblers ...                 | 20'-10-5/16 ...  | 6,358 |                | 44" (1,118 mm) shoes extended .....                | 18'-11" ....     | 5,766 |
| I <sub>1</sub> | Center of drive tumbler to center of rotation.....       | 9'-10-3/4" ....  | 3,016 | N <sub>1</sub> | Length over crawler axles.....                     | 15'-2" ....      | 4,623 |

# AMERICAN MODEL A 100-HC WORKING RANGES



FORM NO. A 100-CR-2

PRINTED IN U.S.A.

**SOLD & SERVICED BY:**



**American Crane Corporation**

202 Raleigh Street

Wilmington, North Carolina 28412

910-395-8500

AN EQUAL OPPORTUNITY EMPLOYER