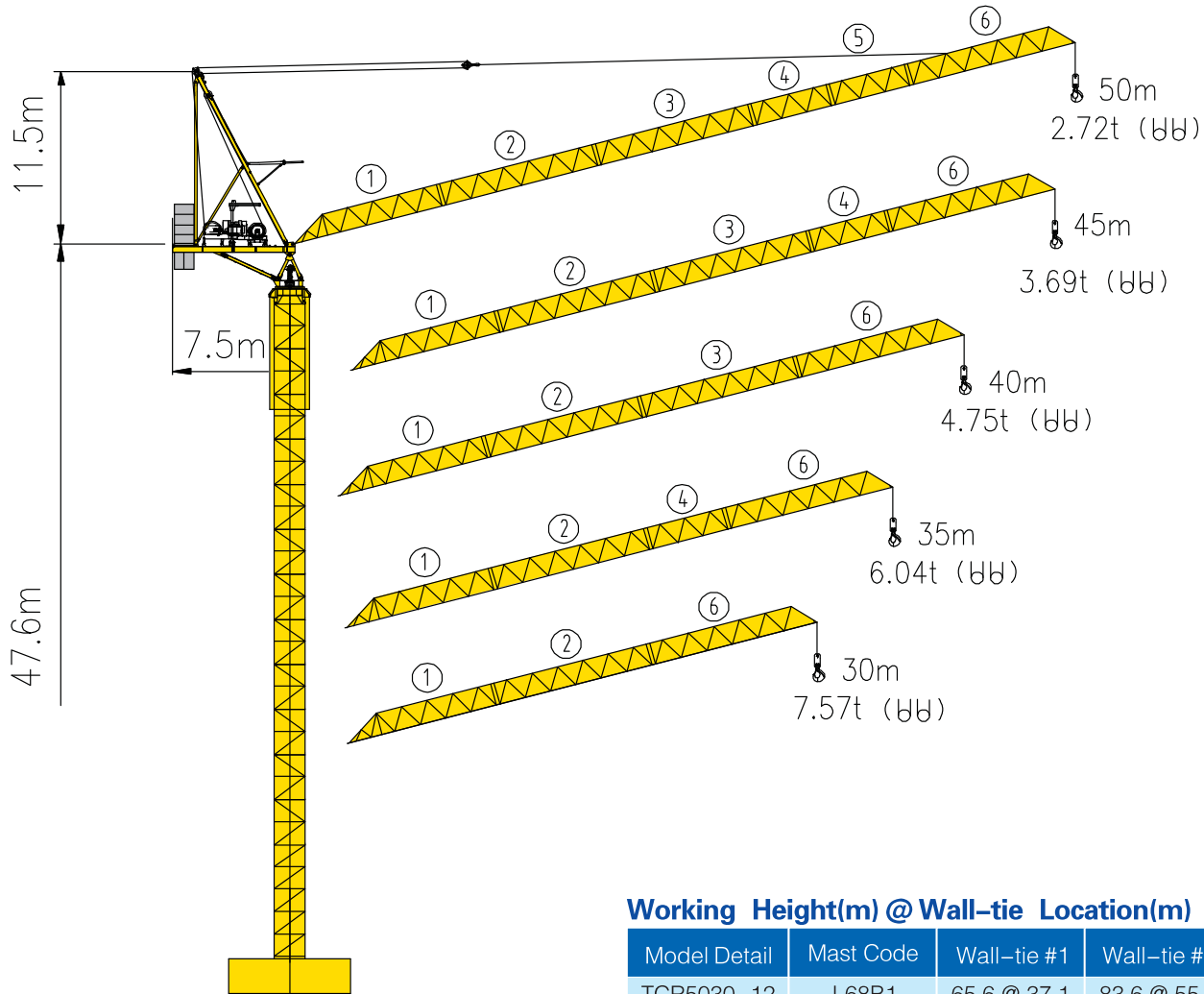


# TCR5030-12



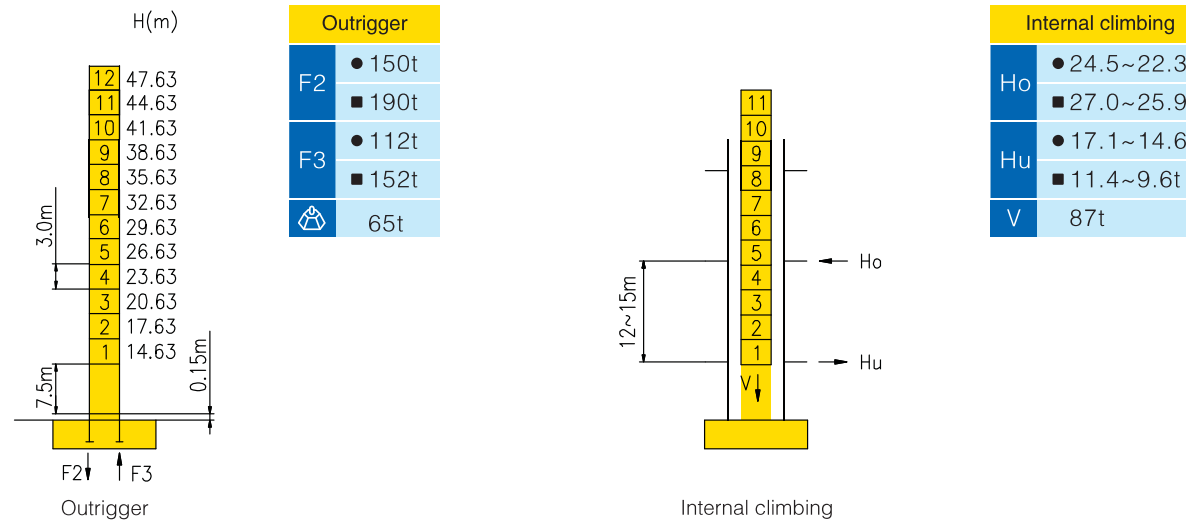
## Counter-jib ballast

		(Kg)	PHZ3250	PHZ2500
50m	7.5m	18000	4	2
45m	7.5m	18000	4	2
40m	7.5m	18000	4	2
35m	7.5m	18000	4	2
30m	7.5m	18000	4	2

## Working Height(m) @ Wall-tie Location(m)

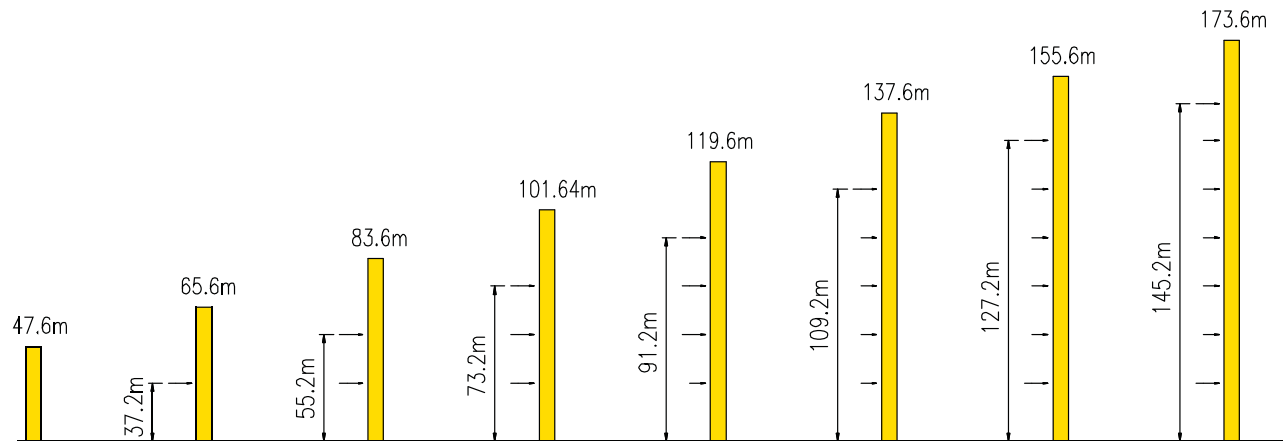
Model Detail	Mast Code	Wall-tie #1	Wall-tie #2	Wall-tie #3	Wall-tie #4	Wall-tie #5	Wall-tie #6	Wall-tie #7
TCR5030-12	L68B1	65.6 @ 37.1	83.6 @ 55.2	101.64 @ 73.2	119.6 @ 91.2	137.6 @ 109.2	155.6 @ 127.2	173.6 @ 145.2

## Masts Reactions




● Reactions in service ■ Reactions out of service  
 ⚙️ Without load and ballast with longest jib and maximum height  
 ⊕ For more erecting solutions, consult us!

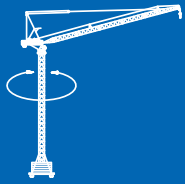
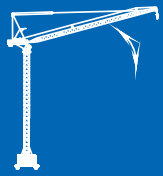

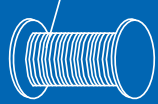

## Anchorage



## Load diagrams

		Max. Capacity m/t	22	25	28	30	32	35	38	40	42	45	48	50	
50m	⌋	3.95—32.9m 6t	6						5.46	4.79	4.41	4.06	3.61	3.23	3.00
	⌋⌋	3.95—19.5m 12t	10.23	8.57	7.27	6.56	5.93	5.14	4.48	4.10	3.76	3.31	2.94	2.72	
45m	⌋	3.58—34.0m 6t	6						5.76	5.26	4.73	4.40	3.98		
	⌋⌋	3.58—19.8m 12t	10.51	8.86	7.57	6.86	6.24	5.46	4.80	4.43	4.11	3.69			
40m	⌋	3.22—34.9m 6t	6						5.99	5.38	5.03				
	⌋⌋	3.22—19.9m 12t	10.58	8.97	7.73	7.04	6.44	5.69	5.09	4.75					
35m	⌋	2.87—35m 6t	6												
	⌋⌋	2.87—20.1m 12t	10.79	9.21	7.98	7.31	6.73	6.05							
30m	⌋	2.42—30m 6t	6												
	⌋⌋	2.42—20.2m 12t	10.85	9.32	8.16	7.57									

## Mechanisms

		Hoisting		QPL1280		
	Slewing		ZRCV95B.130			
	0 ~ 0.7 r/min	2×95 Nm				
	Luffing		BPL300			
	2.8 min (15° ~86° )	30 kW				
		 45 kW	III	⌋	6t	0~32m/min
				⌋⌋	12t	0~16 m/min
		 600mⓄ ( 6 layers ) Ⓞ Consult us If overtop	IV	⌋	3t	0~40 m/min
				⌋⌋	6t	0~32 m/min
			V	⌋	1.5t	0~80 m/min
				⌋⌋	3t	0~65 m/min
		380V(+10%–10%) 50Hz		85 kW		