



# TEL-29

## Telescopic Aerials



# DEMAND BETTER

Hydraulic Levelled Platform  
available on all models



Non-Insulated Aluminum  
Inner Boom for  
increased payload and  
less wear and tear  
on chassis



Patented Electroguard  
provides 42" insulation  
gap in fully retracted  
position available



Infinitely Adjustable Slide Pads

- Working Height: Up to 35'
- Horizontal Reach: Up to 23' 5"
- Platform Capacity: Up to 350 lbs.

Optional Remote Electric  
Controls provide greater  
visibility for operation of  
the unit from the ground



For more information about the TEL-29 or any of the other outstanding VERSALIFT machines,  
contact your authorized VERSALIFT Distributor or call 1.800.825.1085.



# Tel-29

## Telescopic Aerials

### GENERAL SPECIFICATIONS

(Based on 40 in. (1.02m) Frame Height)

#### INSULATED MODELS

	TEL-29-I	TEL-29-EI	TEL-29-IH	TEL-29-EIH
Horizontal Reach	21 ft. 8 in. (6.60 m)	23 ft. 5 in. (7.14 m)	20 ft. 11 in. (6.37 m)	23 ft. 5 in. (7.14 m)
Standard Platform Capacity	300 lbs. (136 kg)	300 lbs. (136 kg)	300 lbs. (136 kg)	300 lbs. (136 kg)
Outer Boom Travel	-8° to +80°	-8° to +80°	-14° to +74°	-14° to +74°
Inner Boom Extension	116 in. (2.95 m)	116 in. (2.95 m)	116 in. (2.95 m)	116 in. (2.95 m)
Insulation Gap	42 in. (1.07 m)	42 in. (1.07 m)	42 in. (1.07 m)	42 in. (1.07 m)

#### With Standard Pedestal

Height to Bottom of Platform	29 ft. 11 in. (9.12 m)	30 ft. 7 in. (9.32 m)	29 ft 6 in. (9.0 m)	29 ft. 1 in. (8.86 m)
Working Height	34 ft. 11 in. (10.64 m)	35 ft. 7 in. (10.85 m)	34 ft 6 in. (10.52 m)	34 ft. 1 in. (10.4 m)
Stowed Travel Height	9 ft. 9 in. (2.97 m)	9 ft. 9 in. (2.97 m)	10 ft. 6 in. (3.20 m)	10 ft. 6 in. (3.2 m)
Weight of Lift w/Mounting Hardware	1,510 lbs. (686 kg)	1,530 lbs. (695 kg)	1,560 lbs. (710 kg)	1,580 lbs. (715 kg)

#### Hydraulic System

Operating Pressure	2000 PSI (141 kg/cm <sup>2</sup> )	2000 PSI (141 kg/cm <sup>2</sup> )	2250 PSI (158 kg/cm <sup>2</sup> )	2250 PSI (158 kg/cm <sup>2</sup> )
Flow Rate	2 GPM (8 lpm)	2 GPM (8 lpm)	3 GPM (12 lpm)	3 GPM (12 lpm)
Filtration	10 micron return	10 micron return	10 micron return	10 micron return
	100 mesh suction	100 mesh suction	100 mesh suction	100 mesh suction
System Type	Open Center	Open Center	Open Center	Open Center

#### NON-INSULATED MODELS

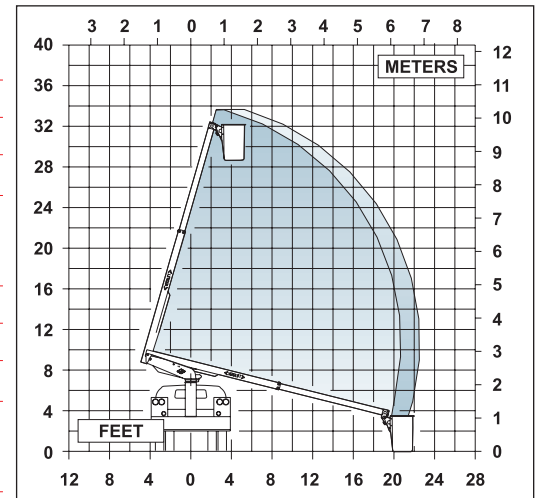
	TEL-29-N	TEL-29-NE
Horizontal Reach	20 ft. 8 in. (6.30 m)	22 ft. 7 in. (6.88 m)
Platform Capacity	350 lbs. (159 kg)	350 lbs. (159 kg)
Outer Boom Travel	-14° to +74°	-14° to +74°
Inner Boom Extension	116 in. (2.95 m)	116 in. (2.95 m)

#### With Standard Pedestal

Height to Bottom of Platform	28 ft. 11 in. (8.81 m)	29 ft. 9 in. (9.07 m)
Working Height	33 ft. 11 in. (10.34 m)	34 ft. 9 in. (10.6 m)
Stowed Travel Height	9 ft. 9 in. (2.97 m)	9 ft. 9 in. (2.97 m)
Weight of Lift w/Mounting Hardware	1,440 lbs. (653 kg)	1,460 lbs. (662 kg)

#### Hydraulic System

Operating Pressure	2000 PSI (141 kg/cm <sup>2</sup> )	2000 PSI (141 kg/cm <sup>2</sup> )
Flow Rate	2 GPM (8 lpm)	2 GPM (8 lpm)
Filtration	10 micron return	10 micron return
	100 mesh suction	100 mesh suction
System Type	Open Center	Open Center



#### OPTIONS

- Continuous Rotation
- Emergency Lowering
- Torsion Bar
- Extra Control Circuit from the Platform
- Two-Speed Manual Throttle-Control
- Platform Variations
- Taller Pedestal
- Hydraulic Pump Power Selections
- Capacity Variations
- Bridgemoat

#### NOTE:

1. Specifications may vary without prior notification.
2. Required GVWR can vary significantly with chassis, lift mounting location, service body, accessories, and desired payload.

  
**TIME**  
 MANUFACTURING COMPANY  
 P.O. Box 20368  
 Waco, TX 76702-0368  
 254.399.2100  
 Fax: 254.399.2651  
 1.800.825.1085  
 www.timemfg.com

