

ELLIOTT

EQUIPMENT COMPANY

MODEL 1800 70-ft BOOM

MAIN BOOM LOAD RATINGS WITH FULLY EXTENDED OUTRIGGERS

MAIN BOOM LOAD RATINGS													JIB LOAD RATINGS							
LOAD RATINGS IN LBS. WITH OUTRIGGERS AND STABILIZERS EXTENDED													LOAD RATINGS IN LBS. WITH OUTRIGGERS AND STABILIZERS EXTENDED							
LOAD RADIUS IN FEET	LOADED BOOM ANGLE	A			B			C			D			23-FT FIXED LENGTH JIB		23-40 FT EXTENDABLE JIB				
		27-FT	34-FT		43-FT			52-FT			61-FT			LOADED BOOM ANGLE	23-FT JIB	LOADED BOOM ANGLE	23-FT JIB RETRACTED	LOADED BOOM ANGLE	40-FT JIB EXTENDED	
5	79	36000																		
10	68	21300	73	19500	77	16500	80	15000							80	4600	80	4500	80	2600
15	56	15200	64	14500	70	13500	75	12000	78	10500	80	9600		75	3700	75	3600	75	2000	
20	41	11500	54	11100	63	10000	69	9000	73	8000	76	7300		70	3000	70	2900	70	1900	
25	19	8600	43	8500	55	8000	62	7200	68	6500	71	5800		65	2400	65	2300	65	1800	
30			27	6750	47	6400	56	5900	63	5400	67	4900		60	2000	60	1900	60	1300	
35					36	5000	49	4700	56	4400	62	4200		55	1600	55	1500	55	900	
40					20	4200	41	4100	50	3900	56	3700		50	1400	50	1300	50	800	
45							30	3500	43	3400	51	3200		45	1100	45	1000	45	600	
50							14	2800	36	2800	45	2700		40	900	40	800			
55									26	2400	39	2300		35	700	35	600			
60											32	1900								
65											22	1550								
	0	6000	0	4200	0	3000	0	1900	0	1300	0	1000								
		340		270		210		170		150		130		DEDUCTIONS FOR STOWED FIXED LENGTH JIB						
		530		420		330		270		230		200		DEDUCTIONS FOR STOWED EXTENDABLE JIB						

NOTICE

- DO NOT DEADHEAD LINE BLOCK AGAINST BOOM TIP WHEN EXTENDING BOOM

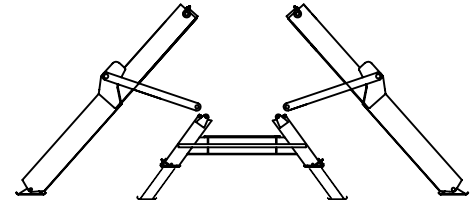
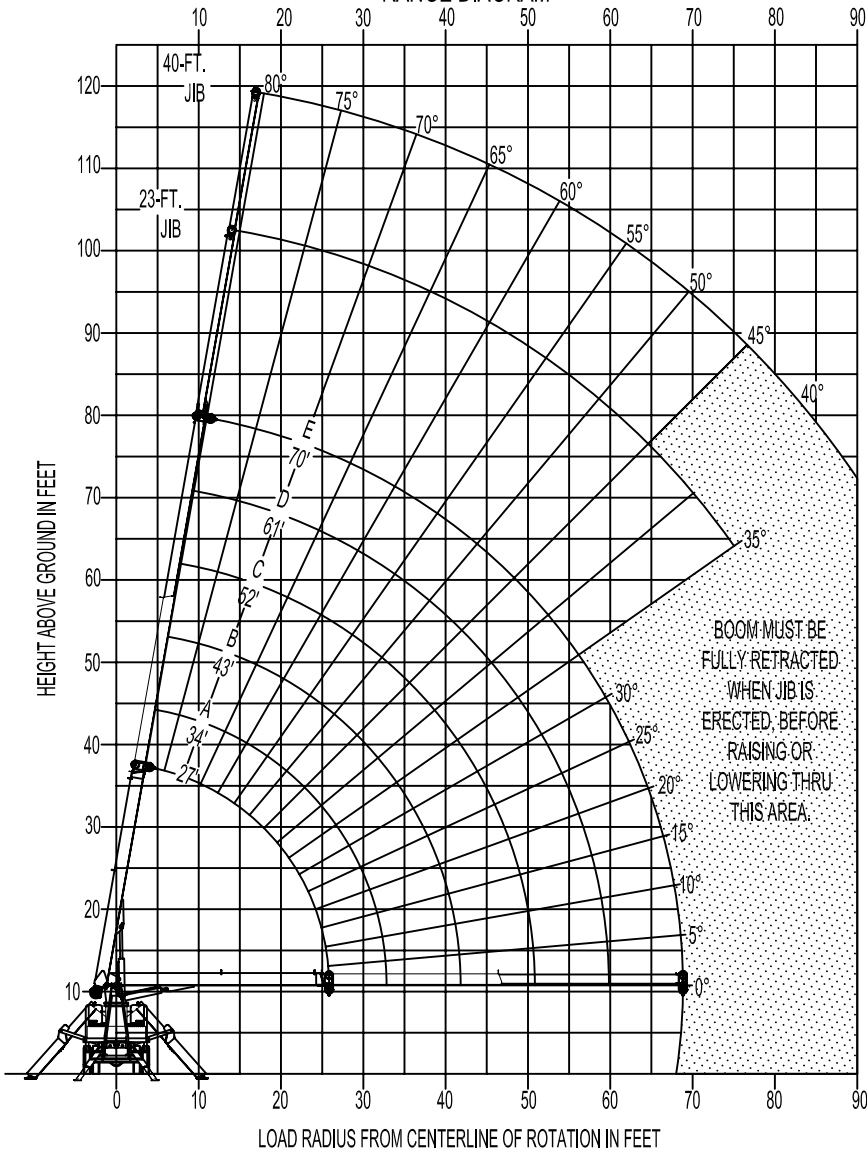
- KEEP AT LEAST 5 WRAPS OF LOADLINE ON THE WINCH DRUM AT ALL TIMES

- USE ONLY 9/16" DIAMETER WIRE ROPE, AS SPECIFIED BELOW, WITH THE PROPER BREAKING STRENGTHS LISTED

- ANTI-TWO-BLOCK SYSTEM MUST BE IN GOOD OPERATING CONDITION BEFORE OPERATING CRANE. SEE OPERATION & SAFETY MANUAL

1-PART LINE	2-PART LINE	3-PART LINE	4-PART LINE	
				ELLIOTT EQUIPMENT CO. SUPPLIED LOADLINE EQUIPMENT DEDUCTIONS: DOWNHAUL WEIGHT180 lbs ONE SHEAVE BLOCK.....375 lbs TWO SHEAVE BLOCK.....640 lbs
MAX PULL: 9,600 lbs	19,200 lbs	28,800 lbs	36,000 lbs	9/16" - 6 x 37 IWRC (3.5:1 S.F.) 33,600-lbs. BREAKING STRENGTH
MAX PULL: 9,060 lbs	18,120 lbs	27,180 lbs	36,000 lbs	9/16" - SPIN RESISTANT (5:1 S.F.) 45,300-lbs. BREAKING STRENGTH
MAX PULL: 7,680 lbs	15,360 lbs	23,040 lbs	30,720 lbs	9/16" - SPIN RESISTANT (5:1 S.F.) 38,400-lbs. BREAKING STRENGTH

RANGE DIAGRAM



OUTRIGGERS AT FULL EXTENSION

NOTE:

1. Operate jib by radius when main boom is full extended. Increase boom angle if necessary to maintain load radius.
2. When boom is retracted, operate jib by boom angles. Do not exceed any rated jib capacities at reduced boom lengths.
3. Capacities do not exceed 85% stability.
4. Load ratings above bold line are structurally limited.
5. Personnel handling is allowed only with full span outriggers.
6. Boom load ratings are based on loaded boom radius. Loaded boom angles are given as reference only.

BOOM MUST BE FULLY RETRACTED WHEN JIB IS ERECTED. BEFORE RAISING OR LOWERING THRU THIS AREA.

