

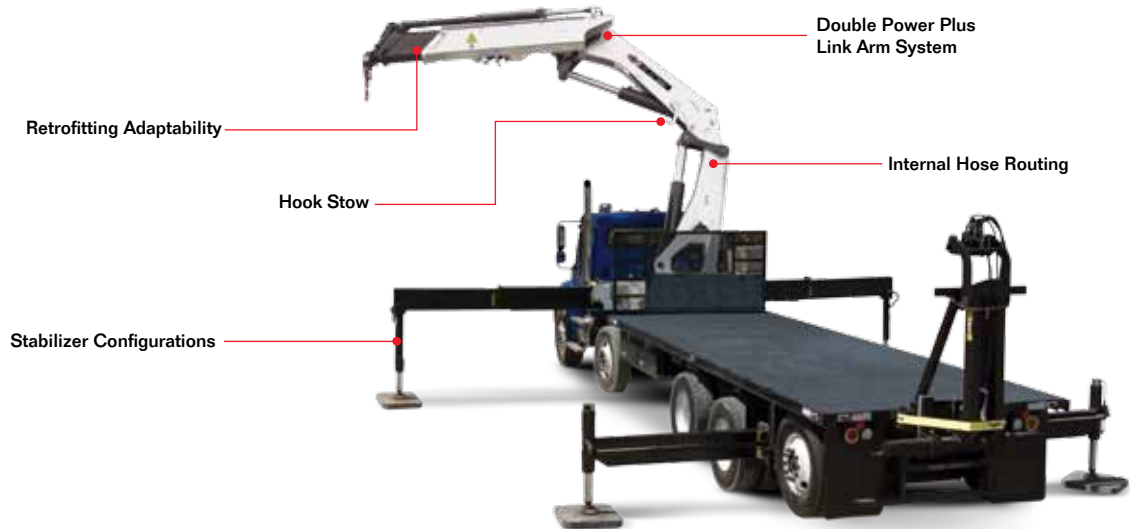
60/427

Articulating Crane



► 60/427 Articulating Crane

With a high lift-to-weight ratio and long-reach capabilities, IMT® 60/427 articulating cranes feature hexagonal booms for superior strength and stability. These cranes have a maximum horizontal boom reach of 67.5 ft (20.6 m) and a max lifting capacity of 27,845 lb (12,630 kg), as well as a variety of options available. With an excellent track record in the field, IMT cranes can be counted on for performance and durability in heavy-duty applications.



60/427 Specifications

	2 - Hydraulic	3 - Hydraulic	4 - Hydraulic	5 - Hydraulic
Crane Rating*	409,390 ft-lb (56.6 tm)	398,540 ft-lb (55.1 tm)	391,305 ft-lb (54.1 tm)	386,240 ft-lb (53.4 tm)
Max Horizontal Reach	27' 3" (8.3 m)	34' 1" (10.4 m)	40' 8" (12.4 m)	48' 3" (14.7 m)
Max Vertical Reach	36' 5" (11.1 m)	43' (13.1 m)	49' 6" (15.1 m)	56' 9" (17.3 m)
Max Capacity	27,845 lb (12,630 kg)	27,115 lb (12,300 kg)	26,765 lb (12,140 kg)	25,970 lb (11,780 kg)
Max Cap @ Max Reach	15,235 lb (6910 kg)	11,705 lb (5310 kg)	9195 lb (4170 kg)	7295 lb (3310 kg)
Crane Weight **	9735 lb (4415 kg)	10,395 lb (4715 kg)	11,055 lb (5015 kg)	11,650 lb (5285 kg)
Hook Approach				
Vertical	10' 6" (3.2 m)	10' 2" (3.1 m)	9' 10" (3 m)	9' 6" (2.9 m)
Horizontal	4' 11" (1.5 m)	4' 11" (1.5 m)	4' 11" (1.5 m)	4' 11" (1.5 m)

Center of Gravity - Stored

Vertical	3' 1" (930 mm)	3' 1" (945 mm)	3' 1" (950 mm)	3' 2" (960 mm)
Horizontal (C/L Rotation to Bridge)	12.1" (308 mm)	12" (305 mm)	12.2" (310 mm)	12" (306 mm)

	6 - Hydraulic	7 - Hydraulic	8 - Hydraulic
Crane Rating*	382,625 ft-lb (52.9 tm)	378,285 ft-lb (52.3 tm)	373,225 ft-lb (51.6 tm)
Max Horizontal Reach	51' 10" (15.8 m)	59' 9" (18.2 m)	67' 7" (20.6 m)
Max Vertical Reach	61' 8" (18.8 m)	69' 3" (21.1 m)	76' 9" (23.4 m)
Max Capacity	26,610 lb (12,070 kg)	25,245 lb (11,450 kg)	24,715 lb (11,210 kg)
Max Cap @ Max Reach	6570 lb (2980 kg)	5225 lb (2370 kg)	4210 lb (1910 kg)
Crane Weight **	12,050 lb (5465 kg)	12,490 lb (5665 kg)	12,930 lb (5865 kg)
Hook Approach			
Vertical	10' 2" (3.1 m)	9' 2" (2.8 m)	9' 2" (2.8 m)
Horizontal	4' 11" (1.5 m)	4' 11" (1.5 m)	4' 11" (1.5 m)

Center of Gravity - Stored

Vertical	3' 2" (960 mm)	3' 2" (969 mm)	3' 3" (983 mm)
Horizontal (C/L Rotation to Bridge)	12.3" (313 mm)	12.2" (309 mm)	12" (304 mm)

* Crane rating (ft-lb) is the rated load (lb) multiplied by the respective distance (ft) from centerline of rotation with all extensions retracted and the inner and outer booms in a horizontal position, per ANSI B30.22. ** Crane weight is for standard crane with tank & 8-bolt long mounting kit. Does not include stabilizers, tank or oil.

Standard Features

- Radio remote control
- Double link arm system
- Application-specific product offering
- Superior lift-to-weight ratio
- Long-reach capabilities
- Hexagonal booms for superior reach and maximum control
- Internal hose routing
- 15° overbending on outer boom
- Oil cooler
- Continuous rotation

Options

- Various stabilizer configurations
- Boom mounted winch
- Floodlight on outer boom
- Boom tip functions for hydraulic attachments

Specifications

Stabilizer Pad Diameter	7.9" (200 mm)
Crane Storage Height	7' 11" (2425 mm)
Mounting Space*** (K2 - K5)	4' 4" (1325 mm)
(K6 - K8)	4' 9" (1460 mm)
(K6 with K6 FJ1200)	5' 2" (1585 mm)
Rotational Torque	50,630 ft-lb (7 tm)
Rotation	Continuous
Optimum Pump Performance	Fixed 21 gpm (79.5 L/min) Variable 29 gpm (109.8 L/min)
System Pressure	5075 psi (350 bar)
Oil Reservoir Capacity	Standard 66 gal (250 L) Optional 85 gal (320 L)
Stabilizer Extension Span Standard (hydraulic out/hydraulic down) Weight	27' 7" (8420 mm) 1545 lb (700 kg)

*** Maximum swing clearance radius required is 3' 1" (935 mm) at 8' 9" (2660 mm) from top of chassis frame.

Minimum Chassis Specifications

Front Axle Rating (GAWR)	20,000 lb (9070 kg)
Rear Axle Rating (GAWR)	46,000 lb (20,865 kg)
Resistance to Bending Moment Minimum	5,700,000 in-lb (656,710 kg-m)

Hexagonal Boom Design

A wide hexagonal profile with large bearing surfaces ensures greater strength and stability for horizontal and vertical spans — even when working in extreme positions with long reaches. Plus, it's protected by powdercoat paint that never fades, flakes, or corrodes.



Internal Hose Routing

Fed internally through protective nylon drag chains or roller guides, all hoses are equipped with sturdy, high-pressure swivel couplings to prevent them from twisting.



Overbending

Overbending between the main boom and jib provides greater flexibility when working under power wires and more potential for high lifting in narrow passages. It also lowers the total height when the loader is stowed over the truck body.

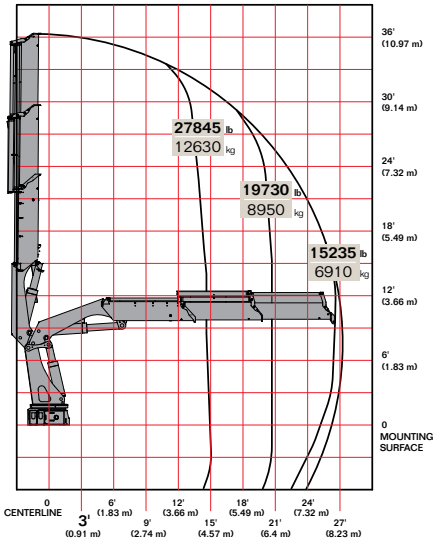


Stow Bracket Innovation

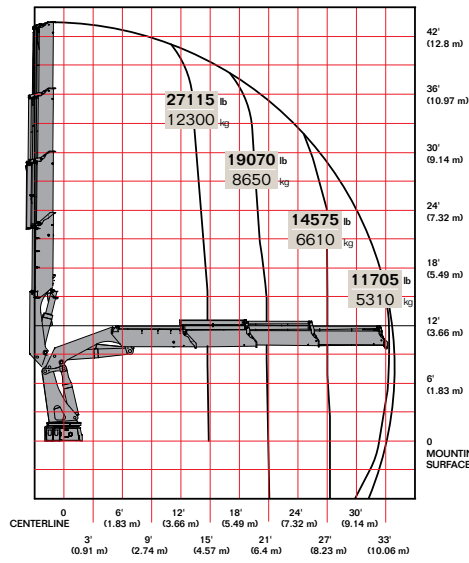
The stow bracket is designed to secure the boom for transport position but not allow for bracket damage. Unlike systems with rigid fixed brackets, the "J" hook will pivot if an incorrect movement is attempted.

▶ 60/427 Capacity Charts

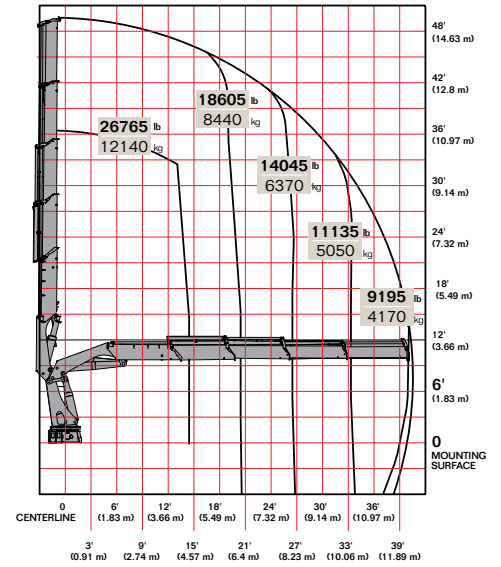
60/427 K2



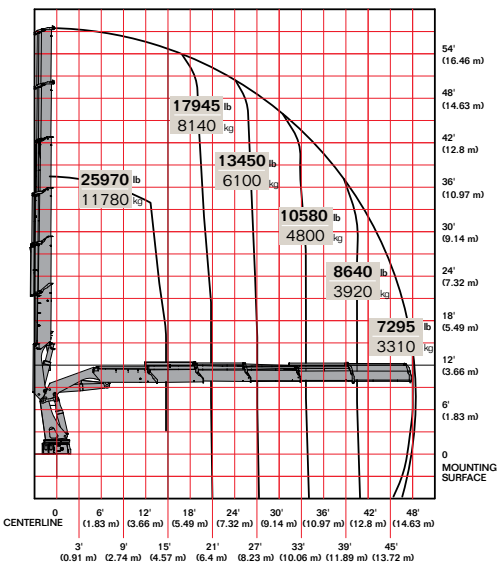
60/427 K3



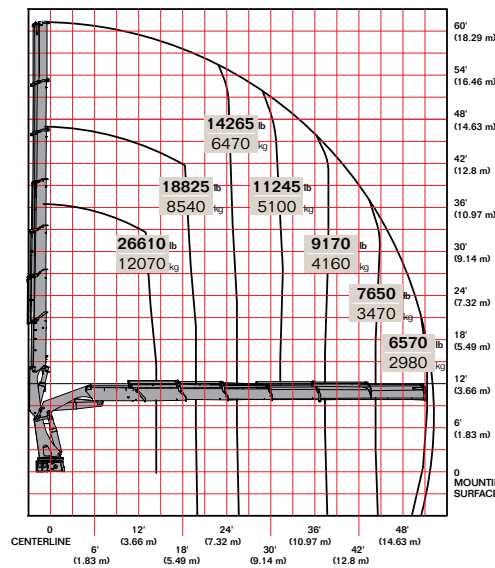
60/427 K4



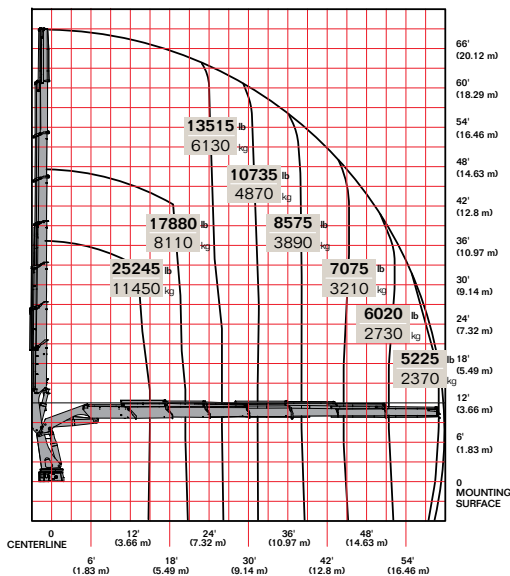
60/427 K5



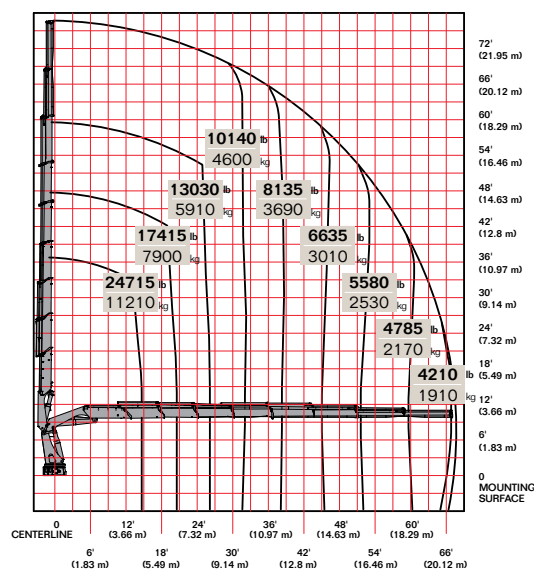
60/427 K6



60/427 K7



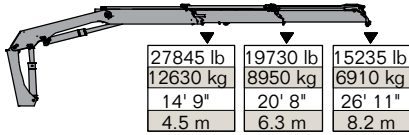
60/427 K8



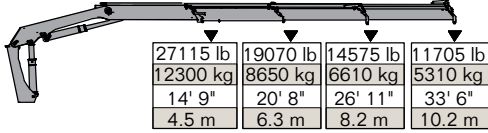
Limit working loads to those shown. Deduct the weight of load-handling devices.

▶ 60/427 Lifting Capacity

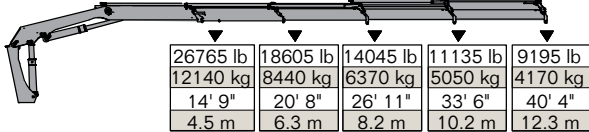
60/427 - 2 Hydraulic



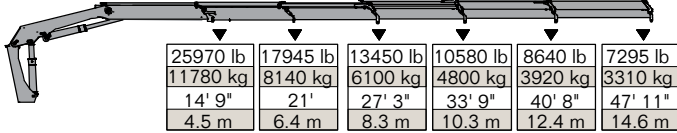
60/427 - 3 Hydraulic



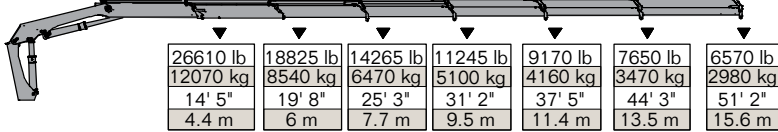
60/427 - 4 Hydraulic



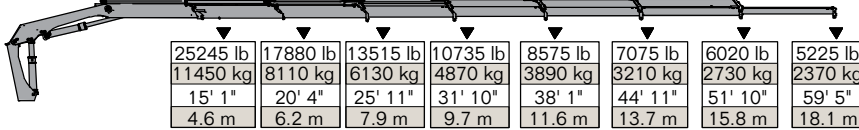
60/427 - 5 Hydraulic



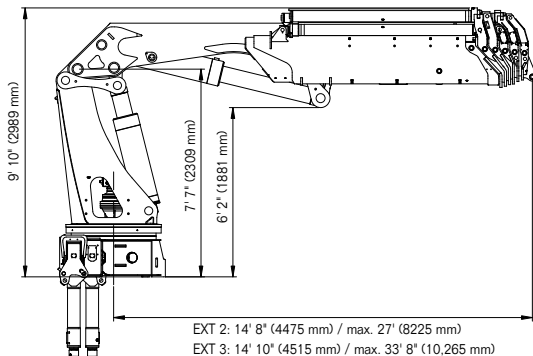
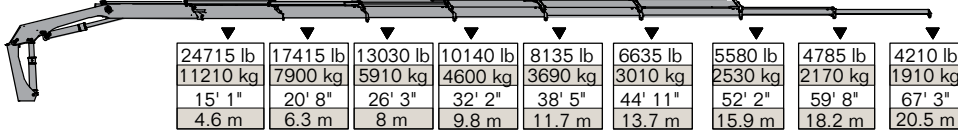
60/427 - 6 Hydraulic



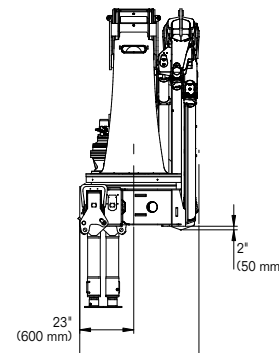
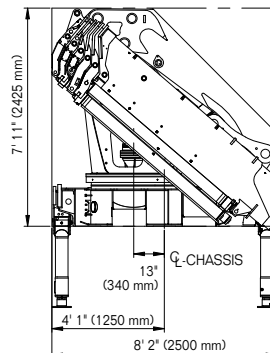
60/427 - 7 Hydraulic



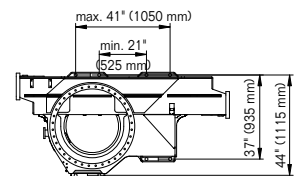
60/427 - 8 Hydraulic



EXT 2: 14' 8" (4475 mm) / max. 27' (8225 mm)
 EXT 3: 14' 10" (4515 mm) / max. 33' 8" (10,265 mm)
 EXT 4: 15' (4580 mm) / max. 40' 9" (12,430 mm)
 EXT 5: 15' 3" (4655 mm) / max. 48' 2" (14,680 mm)
 EXT 6: 15' 6" (4500 mm) / max. 51' 8" (15,750 mm)
 EXT 7: 15' 5" (4690 mm) / max. 59' 10" (18,240 mm)
 EXT 8: 15' 6" (4725 mm) / max. 67' 6" (20,575 mm)



EXT 2-5: 52' (1325 mm)
 EXT 6-8: 57.5' (1460 mm)



Power Source

- Standard integral-mounted piston hydraulic pump and PTO application

Cylinder Holding Valves

- Integral-mounted counterbalance valves or load-holding check valves
- Prevention of sudden cylinder collapse in case of hose failure

Rotation System

- 360 degree continuous rotation through planetary gear box
- 50,630 ft-lb (7 tm) rotational high-torque hydraulic motor
- Hydraulic brake included

Hydraulic System

- Open-centered system — closed optional
- Regeneration system available on all cylinders to ensure quick deployment
- Hydraulic oil reservoir, air breather, replaceable return-line filter and control valve

Overload System

- Load-limiting capability for boom functions
- Rated capacity limitation (RCL) 5300 blocks load-increasing functions when full capacity is attained



Nothing Says Commitment Like The Diamond.™

IMT has been meeting the needs of our customers for over 50 years and none of it would have been possible without a distributor network that's second to none. IMT distributors offer fast, knowledgeable service and the ability to help customers find the right product for every application. When you're looking for reliable equipment and dependable service, remember IMT.



An Oshkosh Corporation Company

Iowa Mold Tooling Co., Inc.
500 Highway 18 West
Garner, Iowa 50438
800-247-5958 • www.imt.com