



Maxilift is a light, skilled and hi-tech crane, modern and user-friendly. Thanks to its manufacturing concept and modularity, it represents the ideal solution for several fields and applications.

Maxilift es una grúa, ligera, especializada, tecnológica, moderna y de fácil utilización. Gracias a su concepto constructivo modular es la solución ideal para una infinidad de aplicaciones en diferentes sectores.



US/E MP.0.177 01/2013

MAXILIFT. POWER AT YOUR HAND



MAXILIFT. POWER AT YOUR HAND

Maxilift advantages:

- **Possible installation** in different points of the body without losing payload space
- **Excellent** crane weight / max. loading capacity ratio
- **Availability** of alternative hi-tech safety systems for the same crane model
- **Gradual and easy movements** in whole loading spectrum
- **Accurate production finishing and protection** against corrosion
- **The world widest range of models and versions** enabling to set up a crane according to one's requirements
- **Possible fitting** of reliable, efficient and user-friendly remote control systems

Las ventajas de Maxilift:

- **Posibilidad de instalación en varios lugares** dentro de la caja sin pérdida de espacio útil
- **Óptima relación** entre el máx peso de la grúa y la max capacidad de elevación
- **Disponibilidad de sistemas de seguridad** avanzados y diferentes para el mismo modelo de grúa
- **Movimientos progresivos** y sin esfuerzos en toda la área de carga
- **Precisión en el acabado** y protección anti-corrosión
- **La más amplia gama de productos y versiones** en el mercado mundial permite la configuración de la grúa según las exigencias personales
- **Posibilidad de equiparlas con controles remotos** fiables, eficaces y de sencilla utilización

Technical data not binding
Datos técnicos no vinculantes

Maxilift: wide program of telescopic stiff boom cranes ideal for installation on light and extra-light vehicles..

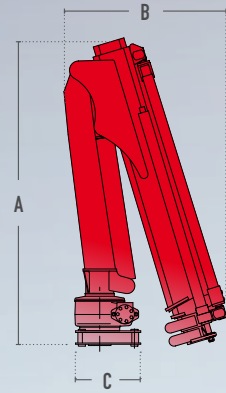
Maxilift: amplia gama de grúas telescópicas ideales para instalación sobre vehículos ligeros y ultraligeros



www.maxiliftcrane.com | www.nexthydraulics.com



SPECIFICATIONS CARACTERÍSTICAS



Mod.	Dimensions Dimensiones (ft)			Lifting capacity Capacidad de elevación (ft lbs)	Slewing angle Angulo de rotación	Basic crane weight Peso de la grúa básica (lbs)	Crane weight with base Peso de la grúa con base (lbs)	LM Load limiting device Dispositivo limitador de carga	SC Load limiting device with stability control Dispositivo limitador de carga con control de estabilidad
	A	B	C						
50	47"	26"	12"	3,700	330°	140-210	--	--	--
110	48"	26"	12"	7,300	330°	230-385	370-525	--	--
150	52"	27"	12"	10,500	330°	360-450	500-590	--	--
180	52"	31"	12"	12,500	330°	400-460	620-685	•	--
230	56"	32"	12"	16,000	360°	495-600	720-830	•	•
270	56"	32"	12"	18,500	360°	495-600	720-830	•	•
270 L	59"	45"	12"	18,500	360°	515-640	740-860	•	•
330	61"	34"	15"	23,000	360°	590-760	880-1,040	•	•
380	64"	36"	15"	27,000	360°	680-870	1,030-1,210	•	•
510	71"	53"	21"	35,000	330°	970-1,050	--	•	--
510 L	71"	61"	21"	35,000	330°	1,000-1,200	--	•	--

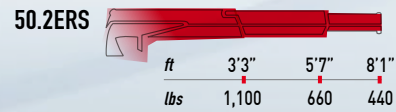
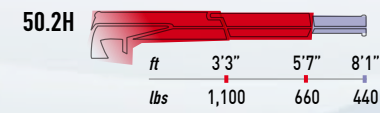
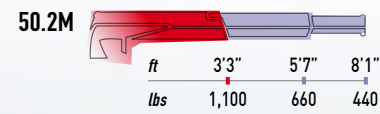
Legend
Nota

Hydraulic extensions
Prolongas hidráulicas

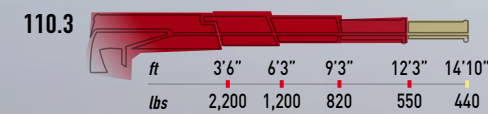
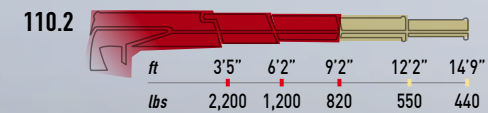
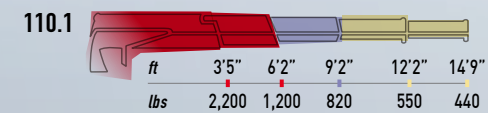
Standard manual extensions
Prolongas manuales estándar

Optional manual extensions
Prolongas manuales opcionales

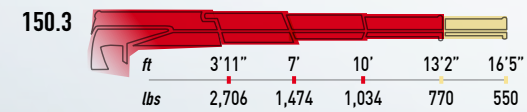
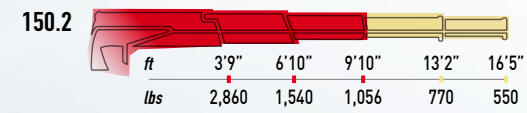
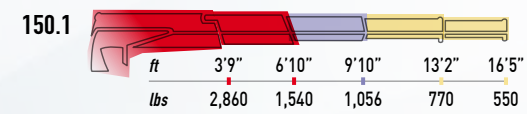
50



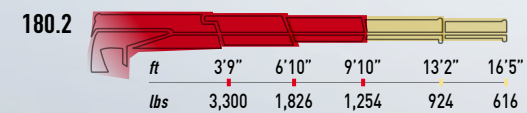
110



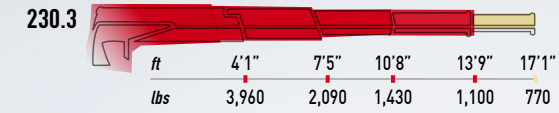
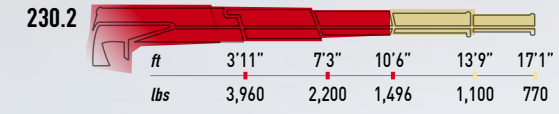
150



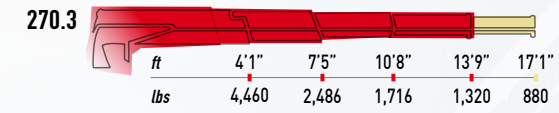
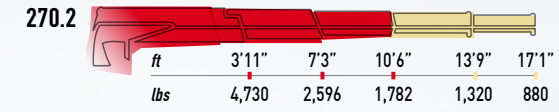
180



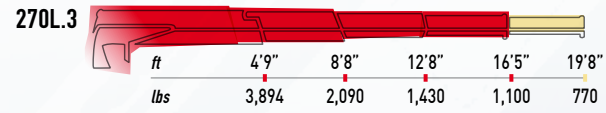
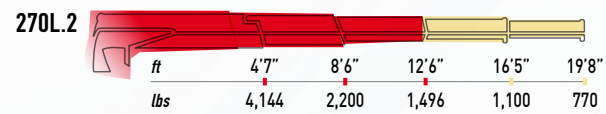
230



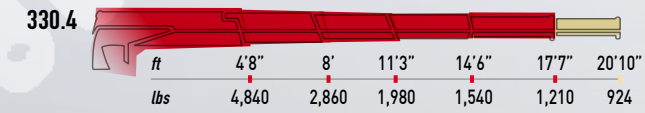
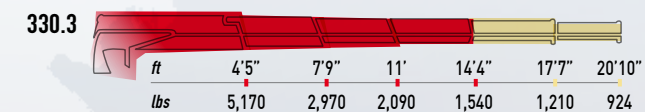
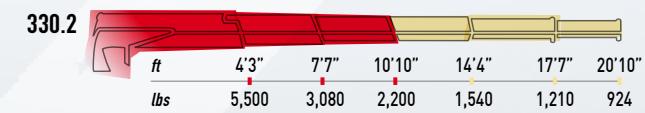
270



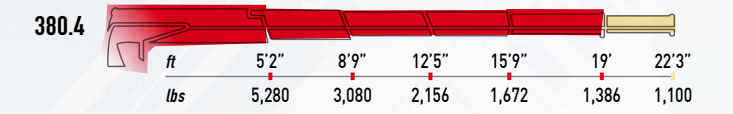
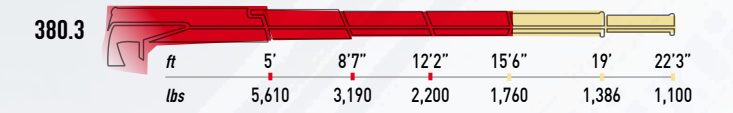
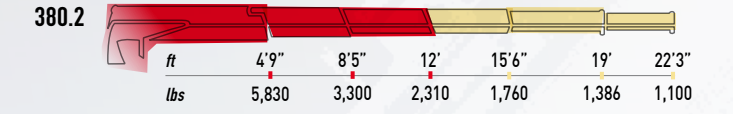
270 L



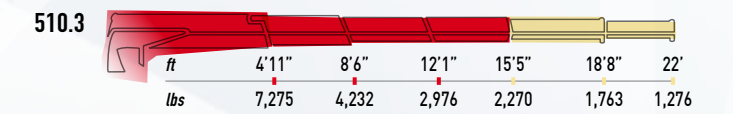
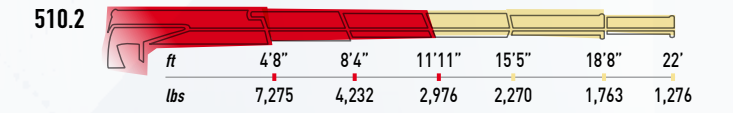
330



380



510



510 L

