

Valla




250 E

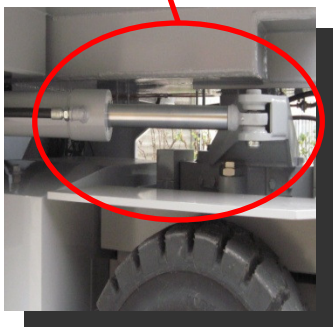


Electric battery operated Arm Lift Mobile Crane Max. Capacity **Lbs. 55,000**



TECHNICAL DATA

	
OUTREACH (Ft)	CAPACITY (Lbs.)
9	26,000
15	14,000
23	9,000



CRANE FRAME: Eight-wheel frame fabricated from preformed and welded steel plate with built-in counterweigh.

TRACTION: by DC 28,5 kw 96V reversible electric motor, controlled by inverter, electro magnetic control on disk brake.

BATTERY: 96V 1450Ah battery, battery meter on dashboard.

BRAKES: foot hydraulically operated drum brakes. Parking hand brake mechanically operated.

SUSPENSION: oscillating rear axle with mechanical lock.

STEERING: power steering operated through own hydraulic circuit by a hydraulic cylinder fitted between the articulated power unit and the crane frame allowing 120° steering fitted with safety valves and filters. 6 kW – 96 V motor driven pump.

WHEELS: nr. 2 rear superelastic 355/65-15 - nr. 6 front superelastic 300 R.15

BOOM: boom fabricated from preformed and welded quality steel plate. Nr.4 telescoping sections: 1 fixed; 3 hydraulically telescoping. Fitted with nylon wear pads adjustable wear pads on the sides.

BOOM CONTROL: distributor by proportional levers. Motor driven pump 18.5kW 96V.

LMI: electronic Load Moment Indicator. Display showing lifted load, max allowed load, tilting percentage, operating radius, angle, telescope and light indicators on the operative mode.

TOTAL WEIGHT: approx. Lbs. 57,000

MAX. CAPACITY: Lbs. 55,000

Options on request: hydraulic winch; chain hoists; carry-deck; battery charger (on board and stand-alone); manual and hydraulic jibs; cable remote control; radio remote control; full set of road lights; man bucket and relevant certification as aerial platform; non marking tires.

Data subject to be changed without any previous notice. Pictures may differ from technical description.

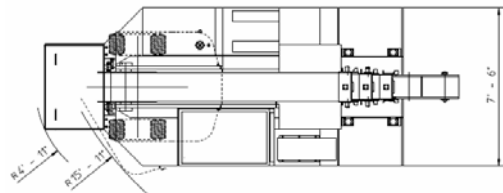
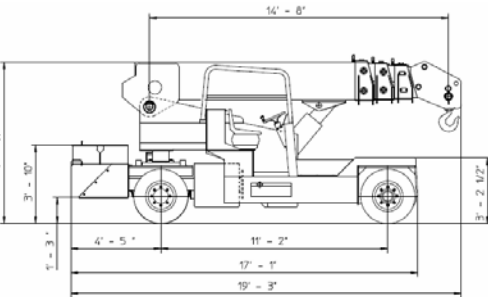
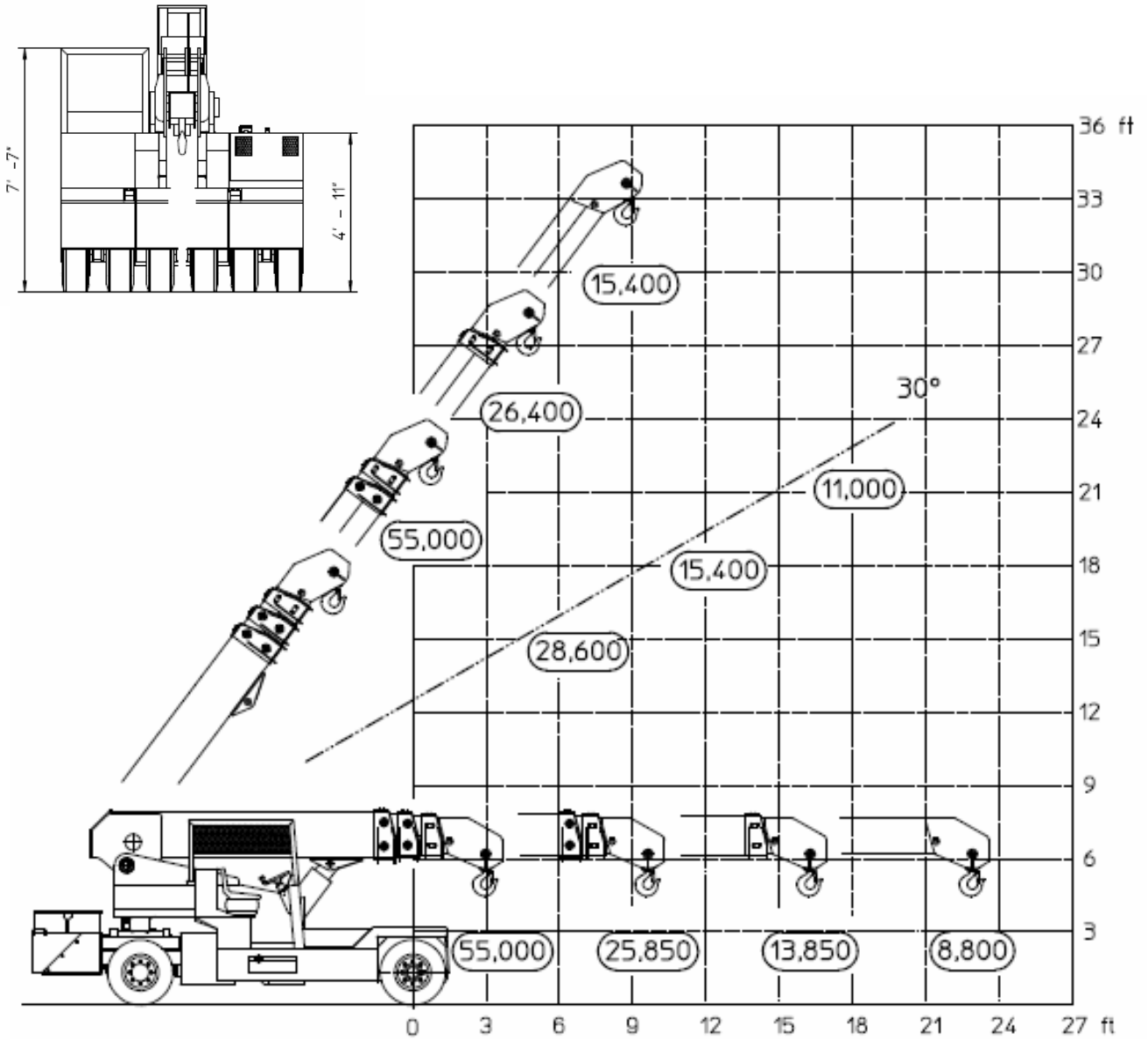
Valla



250 E



The VALLA mobile crane mod. 250E complies with the following standards:
 -2006/42/CE
 -UNIEN13000
 -I.S.P.E.S.L.



Lbs./ft



Valla a division of CVS Ferrari Srl
 Via Piacenza, 45 - 29010 Calendasco (Piacenza) - ITALIA
 Tel. +39 0523 762025 / 752004 - Fax +39 0523 760531
 e-mail: info@valla.com - www.valla.com

Data subject to be changed without any previous notice. Pictures may differ from technical description.