



## Rough Terrain Telescopic Boom Material Handler



### FEATURES

- **8,000 lb. (3629 kg) capacity**  
**25 ft. (7.6 m) reach**  
**42 ft. (12.8 m) of lift**
- **Patented SQUARE SHOOT full load chart level traverse system optional**
- Smooth three section roller boom
- One high quality joy stick controller handles all boom and fork functions
- Self-leveling forks with no separate slave cylinder
- Fast, responsive high angle steering
- Pressure compensated on-demand hydraulics, 10 micron filtration
- Motion control valves in the lift, boom, fork and sway circuits
- Turbo-charged diesel engine, 3-speed Powershift transmission
- 4-wheel drive, 4-wheel (2-wheel & oblique) power steering
- Oil cooled totally enclosed service brakes
- Planetary axles front and rear, 1300 x 24 12-ply tires
- Front axle differential lock, rear axle lock up
- Removable gauge panel
- SAE O-ring or JIC hydraulic connections

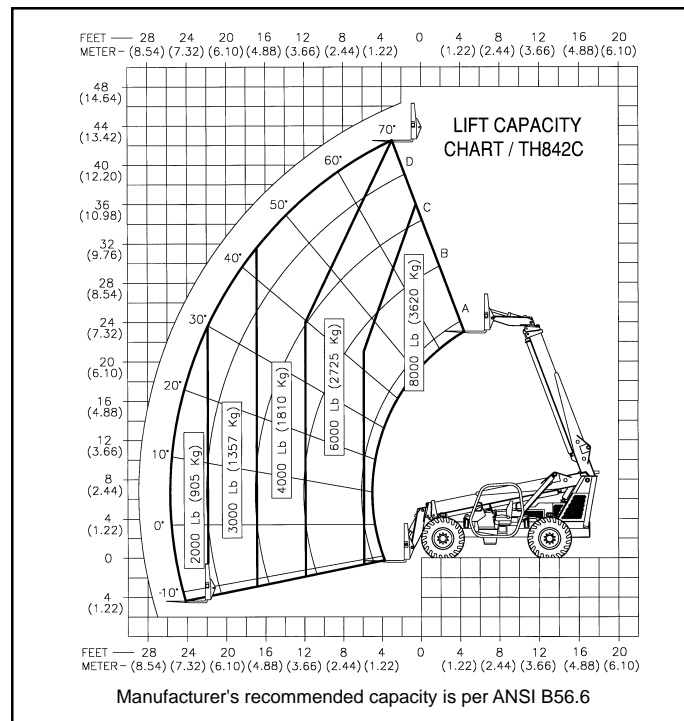
**simple, available and  
cost effective™**

Machines shown may have optional equipment.

# TEREX TH842C SPECIFICATIONS

<b>WEIGHTS</b> with Boom retracted and down	
On Front Axle	8,300 lbs. (3764 kg)
On Rear Axle	14,200 lbs. (6440 kg)
TOTAL	22,500 lbs. (10 204 kg)
<b>DIMENSIONS</b> with Boom retracted and down	
Width OVERALL	8' 6" (2.59 m)
Height OVERALL	9' 1" (2.77 m)
Length OVERALL	24' (7.32 m)
Wheel Base	10' 10" (3.30 m)
Ground Clearance	1' 5" (.43 m)
Turning Radius (outside tire)	14' 9" (4.50 m)
<b>ENGINE</b>	
Make	John Deere Turbo-charged
Model	4045T
Power	99 HP (73.8 kW)
RPM	2500
Fuel Tank Capacity	30 Gals. (113.6 L)
<b>TRANSMISSION</b>	
Powershift/Converter	3 Speed
<b>BRAKES - Parking</b>	
Type	Spring Applied/Hydraulic Release Disc
Location	Front Axle Input Shaft
<b>BRAKES - Service</b>	
Type	Enclosed, Hydraulic, Multiplate, Oil Cooled
Location	Internal
<b>AXLES</b>	
	Heavy Duty Steering Planetaries
<b>WHEELS AND TIRES</b> (Interchangeable)	
Wheels	Heavy Duty Drop Center
Tires - Calcium Chloride Solution Filled	1300 x 24 - 12 Ply
<b>TRAVEL SPEEDS</b> - Forward and Reverse	
First	3.2 MPH (5.1 km/hr)
Second	6.9 MPH (11.1 km/hr)
Third	17.2 MPH (27.7 km/hr)
<b>STEERING</b>	
Power Hydraulic Modes	Orbitrol 2 Wheel, 4 Wheel & Oblique
<b>HYDRAULICS</b>	
Single Pump (unloaded during engine start)	Axial Piston
Type	Flow on Demand
Filtration	10 Micron
Reservoir Capacity	34 Gals. (128.7 L)
<b>SWAY CONTROL</b> - Frame Leveling	
Type	Twin, Circuit Isolated, Cylinders
Range	10° Either Side of Center
<b>EXTENSION BOOM</b>	
	3 Section Roller
<b>AUTOMATION</b>	
Type	Hydromechanical
Operation	One Controller
Fork Function	Self-leveling Throughout Lift/Lower Cycles and No Separate Slave Cylinder
Traverse Function (Optional)	Level Traverse at any Boom Angle/Extension up to full Cylinder Stroke
<b>FRAME STABILIZATION</b>	
Type	Rear Axle Lock-up
Operation	Twin cylinders mounted between frame and axle actuated by stepping on service brake, shutting engine off, or 60° boom angle

For more information, product demonstration, or details on lease and rental plans, please contact your local Terex Construction Distributor.



## STANDARD EQUIPMENT

Single controller for all boom and fork functions • Heavy duty 3 section boom • Self-leveling fork frame • 2" x 5" x 48" (5.1 cm x 12.7 cm x 1.22 m) forks • Motion control valves in the lift, fork, extend and frame leveling circuits • Pilot operated on-demand hydraulics • 10 micron return hydraulic filter • 99 HP John Deere Turbo-charged engine • Dry type air cleaner • Dirt and water fuel filtration • 31.5 (1,000 CCA @ 0°F) battery • 95 AMP alternator • 3 speed Powershift transmission with a service brake and parking brake activated clutch cutoff • 2 heavy duty steering planetary axles • 4 wheel (2 wheel & oblique) power steering • 1300 x 24 12-ply tires • SAHR parking brake • Enclosed multiplate oil-cooled service brakes/accumulator backup • 10° either side of center frame leveling with indicator • Lockable fuel and hydraulic tank caps • Hourmeter • Removable gauge panel with surface-mounted breakers • Gauges for: fuel level, transmission oil temperature, transmission clutch pressure, engine oil pressure, engine coolant temperature and electrical system voltage • Keyed start switch • Adjustable upholstered seat with seat belt • Back up alarm and rear view mirror • Hydraulic pressure connections are SAE O-ring or JIC • Pins are hardened and ground, bushings are of high compressive strength material • Hardware is grade 8 • Front axle differential lock • Rear axle lock • ISO mounted canopy

## OPTIONAL EQUIPMENT

Hydromechanical Level Traverse System • Fully enclosed cab • Dual joystick controls • Heater • Defroster fan • Wiper • Turn signal & hazard flasher package • Cubing tines • Rubbish bucket (1 yard) • 60" and 72" (1.52 m and 1.83 m) pallet forks • 60" - 72" (1.52 m - 1.83 m) wide fork frame • Lights: Headlights, brake, tail, rear flood and strobe • Foam-filled tires • Severe duty tires • Rotating fork frame 48", 60", and 72" (1.22 m, 1.52 m, and 1.83 m) • 45° Swing fork frame 60" & 72" (1.52 m and 1.83 m) • Variable reach truss boom • Cummins B3.9 C-99 Turbo-charged diesel engine • Quik-Switch Attachment • Auxiliary hydraulics • Suspension seat • Front window with or without guard • Ether aid • Block heater

We reserve the right to amend these specifications at any time without notice. The only warranty applicable is our standard written warranty applicable to the particular product and sale. We make no other warranty, expressed or implied.



## TEREX CONSTRUCTION AMERICAS

455 N. Superior Ave. • Baraga, MI 49908-0790 USA

906-353-6675 • Fax: 906-353-7543

E-mail: thsales2@up.net

[www.terex.com](http://www.terex.com)