

IHI

# CCH900

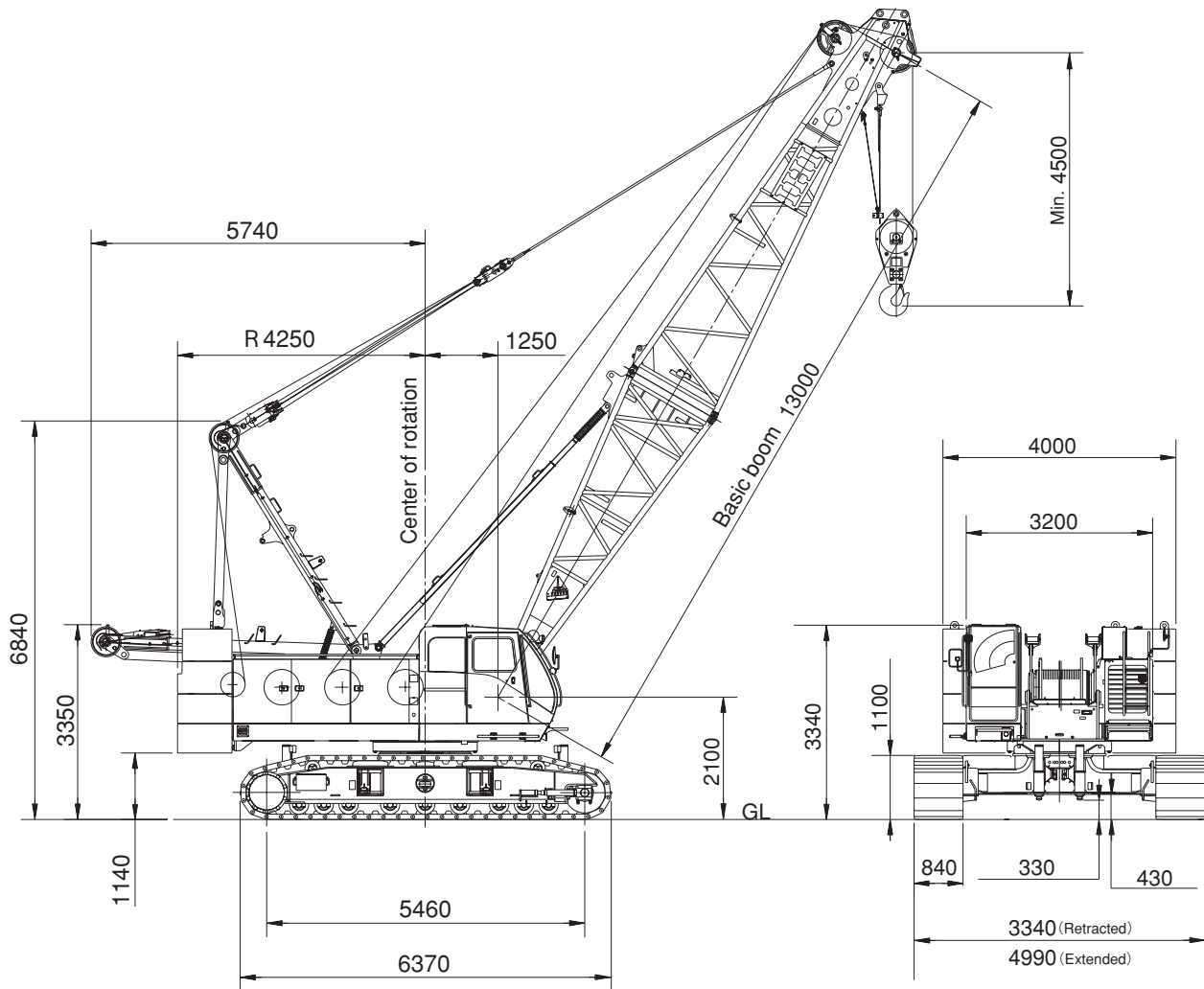
## Fully Hydraulic Crawler Crane

Lifting capacity 90 metric tons



IHI Construction Machinery Limited

## General Dimensions (with basic boom) (Unit:mm)



## Specifications

Performance	
Swing speed	2.4 min <sup>-1</sup>
Travel speed	High: 1.5 / Low: 1.0 km/h
Gradeability	30% (16.7°)
Engine	
Make	Cummins Inc.
Model	QSB6.7
Type	4-cycle, water cooled, turbocharged and charge air cooled diesel engine, complying with US EPA Tier III and EU Stage IIIA
Total displacement	6.7 L
Rated power output	179 kW / 2,000 min <sup>-1</sup>
Fuel tank capacity	400 L
Battery	2 × 12 V × 120 Ah
Load Hoist System (Main & Aux.) *Free fall function is optional.	
Hydraulic motor	Axial piston type
Reduction gear	Two-stage planetary gear (Drum-in type)
Hoist drum	2 grooved cylindrical drums on individual shafts with Lebus type groove, Main/Aux. drums in same width
Clutch	Wet type multi disc
Brake	Wet type multi disc
Drum lock	Ratchet type
Boom Hoist System	
Motor	Axial piston type
Reduction gear	Two-stage planetary gear (Drum-in type)
Hoist drum	Grooved cylindrical single drum on single shaft with Lebus type groove
Brake	Wet type multi disc
Drum lock	Ratchet type

## Crane Specifications

Max. lifting capacity × working radius	90 metric ton × 4.0 m	
Max. boom length	61 m	
Max. boom length, with jib (boom + jib)	71 m (49 m + 22 m)	
Rope speed	Main drum hoisting/lowering	0 - 120 m/min
	Aux. drum hoisting/lowering	0 - 120 m/min
	Boom drum hoist/lowering	65 m/min
Part line	90 ton hook block	8
	12 ton hook block	1
	Boom drum hoist	12
Single line pull (Main & Aux. drums)	Max.	20 ton
	Rated	12 ton
Counterweight		30.6 ton
Total operating weight (with basic boom)		87.0 ton
Average ground bearing pressure		87 kPa (0.89 kgf/cm <sup>2</sup> )

## Standard Equipment

### Safety devices

- Moment limiter : Over-load prevention device  
Alarm at 90%, automatic stop at 100%
- Hook over-winding : Alarm and automatic stop
- Boom over-hoisting : Automatic stop
- 2nd boom throw-out : All winch function (non resettable)
- Boom over-turning : Double-stem telescopic
- Swing lock : Pin-lock
- Main and aux. drum lock : Pawl
- Boom hoisting drum lock : Pawl
- Lever lock : Remote control circuit line cut off
- Suspended load dropping : Interlocked hydraulic and clutch lever mechanism
- Automatic brake system
- Slewing warning buzzer (with voice alarm)
- Travel warning buzzer (with voice alarm)
- Engine start voice alarm
- Switch of emergency engine stop
- Hydraulic circuit valves

### Instrument

- Hour meter
- Hydraulic pressure gauge for control circuit
- Fuel level gauge (indicated on OK monitor)
- Engine coolant temperature gauge (indicated on OK monitor)

### Auxiliary device

- Ultra low speed control
- Speed control for slewing and winch
- Pump power shift device
- Remote controller for jack and crawler expand cylinder

### Light

- Work light 24V × 80W
- Cab light 24V × 10W

### Others

- Air conditioner
- Front windshield wiper
- Ceiling wiper
- Sun shade
- Sun visor
- Storage pouch
- Reclining operator's seat
- Floor mat
- Radio
- Cigarette lighter
- Ashtray
- Rear view mirrors (on both sides)
- Warning horn
- Electric fuel pump
- "A" frame hoist cylinders
- Bronze tinted glass
- Foot rest
- Electric engine throttle control grip
- Engine throttle pedal
- Wire mesh walkway (for inner boom)
- Loud speaker
- Foldable steps for operator's cab
- Winch mode selector (main and aux.)
- Rope guide roller on boom back (for outer boom)

## Options

### Base Machine

- Main and Aux. drums with free fall function
- 3rd drum device
- Reeving winch
- Tagline
- Slewing mode selector switch
- Drum rotation indicator
- TV monitor (left rear drum view)
- TV monitor (hook load view)
- Mirror for drum
- Radio transmitter
- Fire extinguisher
- Spark arrestor
- Jack control levers (fixed on machine)
- Combustion type hearer

## Combination of main boom and jib

Jib length (m)	Boom length (m)																
	13	16	19	22	25	28	31	34	37	40	43	46	49	52	55	58	61
Aux. jib	●	●	●	●	●	●	●	●	●	●	●	●	●	●	●	●	●
10							●	●	●	●	●	●	●	●			
16							●	●	●	●	●	●	●	●			
22							●	●	●	●	●	●	●	●			

● : Applicable combination

## Wire rope

Drum	Rope dia. (mm)	Breaking strength(ton)	Rope type	Rope length (m)
Main hoisting	φ 26	567	IWRC 6×P · WS (31)	210
Boom hoisting	φ 20	284	IWRC 6×WS (31)	170
Boom suspension	φ 34	1020	IWRC 6×P · WS (36)	—
Jib hoisting	φ 26	567	IWRC 6×P · WS (31)	160
Jib suspension	φ 28	585	IWRC 6×Fi (29)	—
Jib strut suspension	φ 28	585	IWRC 6×Fi (29)	—

## Boom Combination

Boom section	Boom length (m)																
	13	16	19	22	25	28	31	34	37	40	43	46	49	52	55	58	61
6.0m inner	1	1	1	1	1	1	1	1	1	1	1	1	1	1	1	1	1
3.0m insert	—	1	2	1	2	2	1	2	2	1	2	2	1	2	2	1	2
6.0m insert	—	—	—	1	1	—	1	1	—	1	1	—	1	1	—	1	1
9.0m insert	—	—	—	—	—	1	1	1	2	2	2	3	3	3	4	4	4
7.0m outer	1	1	1	1	1	1	1	1	1	1	1	1	1	1	1	1	1

## Jib Combination

Jib section	Jib length (m)		
	10	16	22
5.0m inner	1	1	1
6.0m insert	—	1	2
5.0m outer	1	1	1

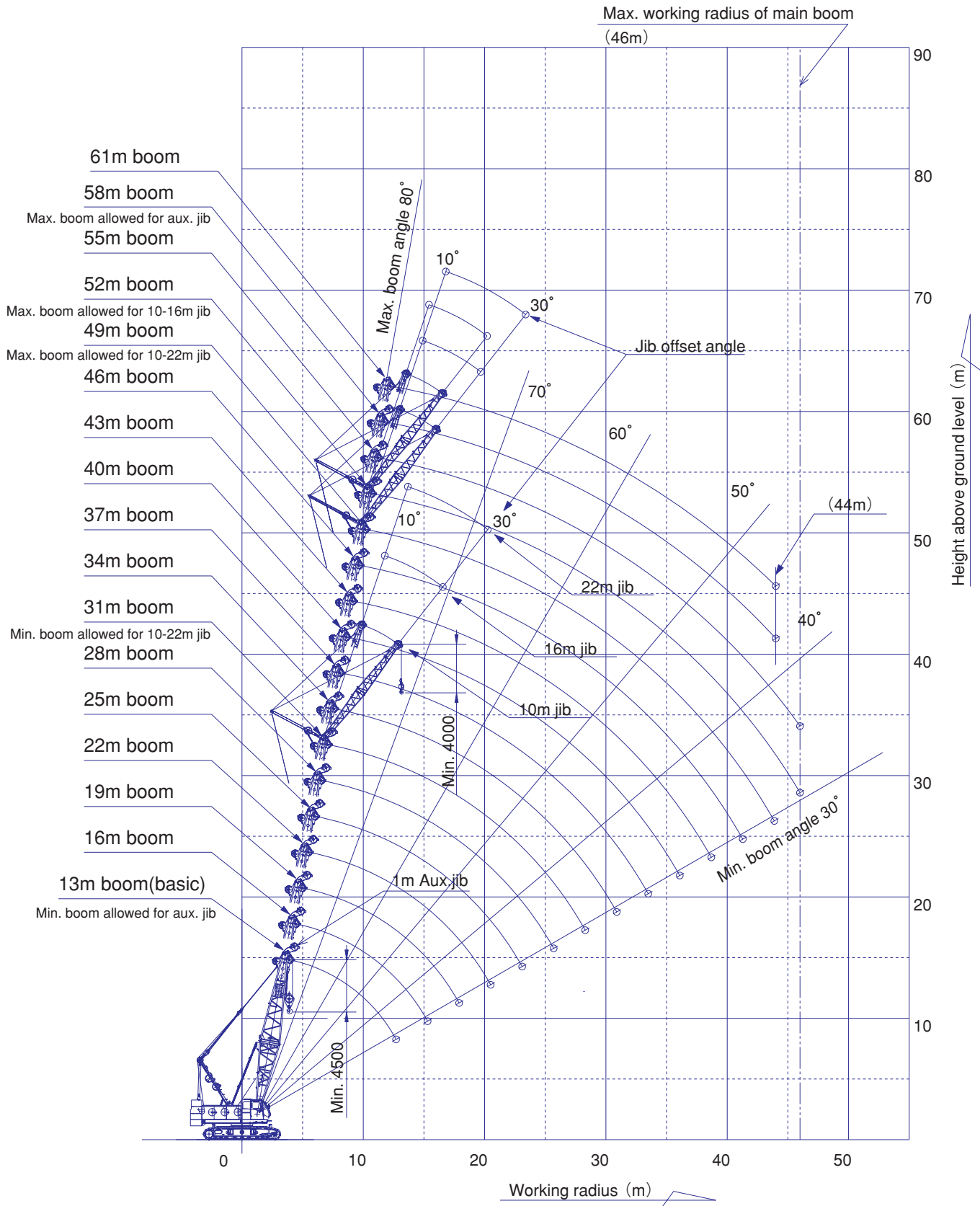
### Light and instrument

- Yellow rotary light
- Airplane warning light
- Boom point clearance lamp
- Over load outside alarm light (red/yellow/green)
- Work light (drum)
- Work light (boom)
- Hand light
- Rear light
- Lift / depth meter
- Anemometer

### Step and guard

- Cat walk (rear cab)
- Wire mesh walkway (for insert boom and outer boom)
- Safety guard rope on boom

## Working range



## Main boom rated lifting loads

(Unit : Metric ton)

Working radius (m)	Boom length (m)																Working radius (m)	
	13.0	16.0	19.0	22.0	25.0	28.0	31.0	34.0	37.0	40.0	43.0	46.0	49.0	52.0	55.0	58.0		61.0
4.0	90.0																	4.0
4.5	83.0	83.0																4.5
5.0	74.2	74.0	5.2m×71.0	5.6m×63.4														5.0
6.0	57.3	57.2	57.1	56.9	6.2m×53.8	6.6m×49.0												6.0
7.0	45.1	45.0	44.9	44.7	44.8	44.7	7.2m×42.8	7.8m×37.9										7.0
8.0	37.1	37.0	36.9	36.7	36.7	36.7	36.6	36.5	8.5m×33.0									8.0
9.0	31.4	31.3	31.2	31.1	31.0	31.0	30.9	30.8	30.7	30.6	9.5m×28.2							9.0
10.0	27.2	27.1	27.0	26.8	26.8	26.7	26.7	26.5	26.5	26.4	26.2	26.2	10.6m×24.0	11.2m×22.0	11.7m×20.6			10.0
12.0	21.3	21.2	21.1	21.0	20.9	20.8	20.7	20.6	20.5	20.4	20.3	20.2	20.1	20.0	19.9	12.3m×18.0	12.7m×15.0	12.0
14.0	12.7m×19.8	17.3	17.2	17.1	17.0	16.9	16.8	16.7	16.6	16.5	16.4	16.3	16.2	16.1	16.0	15.9	14.0	14.0
16.0		15.3m×15.4	14.4	14.3	14.2	14.1	14.0	13.9	13.8	13.7	13.6	13.5	13.4	13.3	13.2	13.1	12.4	16.0
18.0			17.9m×12.4	12.2	12.1	12.0	12.0	11.8	11.7	11.6	11.5	11.4	11.3	11.2	11.1	11.0	10.6	18.0
20.0				10.6	10.5	10.4	10.3	10.2	10.1	10.0	9.9	9.8	9.7	9.5	9.4	9.3	9.2	20.0
22.0				20.5m×10.3	9.2	9.1	9.1	8.9	8.8	8.7	8.6	8.5	8.4	8.3	8.1	8.0	7.9	22.0
24.0					23.1m×8.6	8.1	8.0	7.9	7.8	7.7	7.5	7.4	7.3	7.2	7.1	7.0	6.8	24.0
26.0						25.7m×7.3	7.1	7.0	6.9	6.8	6.7	6.6	6.4	6.3	6.2	6.1	6.0	26.0
28.0							6.4	6.2	6.1	6.0	5.9	5.8	5.7	5.6	5.4	5.3	5.2	28.0
30.0							28.3m×6.3	5.6	5.5	5.4	5.3	5.2	5.1	4.9	4.8	4.6	4.5	30.0
32.0								30.9m×5.4	5.0	4.9	4.7	4.6	4.5	4.4	4.2	4.1	3.9	32.0
34.0									33.5m×4.6	4.4	4.2	4.1	4.0	3.8	3.7	3.5	3.4	34.0
36.0										3.9	3.8	3.6	3.5	3.4	3.3	3.1	2.9	36.0
38.0										36.1m×3.9	3.4	3.3	3.1	3.0	2.8	2.7	2.5	38.0
40.0											38.7m×3.2	2.9	2.8	2.6	2.4	2.3	2.1	40.0
42.0												41.3m×2.7	2.5	2.3	2.1	2.0	1.8	42.0
44.0													43.9m×2.1	1.9	1.8	1.6	1.5	44.0
46.0														1.7	1.5			46.0

## 1m aux. jib rated lifting loads

(Unit : Metric ton)

Working radius (m)	Boom length (m)																Working radius (m)	
	13.0	16.0	19.0	22.0	25.0	28.0	31.0	34.0	37.0	40.0	43.0	46.0	49.0	52.0	55.0	58.0		61.0
4.0																		4.0
4.5	4.6m×12.0																	4.5
5.0	12.0	5.1m×12.0	5.6m×12.0															5.0
6.0	12.0	12.0	12.0	6.2m×12.0	6.7m×12.0													6.0
7.0	12.0	12.0	12.0	12.0	12.0	7.2m×12.0	7.7m×12.0											7.0
8.0	12.0	12.0	12.0	12.0	12.0	12.0	12.0	8.2m×12.0	8.8m×12.0									8.0
9.0	12.0	12.0	12.0	12.0	12.0	12.0	12.0	12.0	12.0	9.3m×12.0	9.8m×12.0							9.0
10.0	12.0	12.0	12.0	12.0	12.0	12.0	12.0	12.0	12.0	12.0	12.0	10.3m×12.0	10.8m×12.0	11.4m×12.0	11.9m×12.0			10.0
12.0	12.0	12.0	12.0	12.0	12.0	12.0	12.0	12.0	12.0	12.0	12.0	12.0	12.0	12.0	12.0	12.4m×12.0		12.0
14.0	12.0	12.0	12.0	12.0	12.0	12.0	12.0	12.0	12.0	12.0	12.0	12.0	12.0	12.0	12.0	12.0		14.0
16.0		12.0	17.8m×12.0	17.7m×12.0	17.6m×12.0	17.5m×12.0	17.4m×12.0	17.3m×12.0	17.2m×12.0	17.1m×12.0	17.0m×12.0	16.9m×12.0	16.8m×12.0	16.7m×12.0	16.6m×12.0	16.5m×12.0		16.0
18.0		16.6m×12.0	11.8	11.7	11.6	11.5	11.5	11.3	11.2	11.1	11.0	10.9	10.8	10.7	10.6	10.5		18.0
20.0			19.2m×10.8	10.1	10.0	9.9	9.8	9.7	9.6	9.5	9.4	9.3	9.2	9.0	8.9	8.8		20.0
22.0				21.8m×8.9	8.7	8.6	8.6	8.4	8.3	8.2	8.1	8.0	7.9	7.8	7.6	7.5		22.0
24.0					7.7	7.6	7.5	7.4	7.3	7.2	7.0	6.9	6.8	6.7	6.6	6.5		24.0
26.0					24.4m×7.5	6.7	6.6	6.5	6.4	6.3	6.2	6.1	5.9	5.8	5.7	5.6		26.0
28.0						27.0m×6.3	5.9	5.7	5.6	5.5	5.4	5.3	5.2	5.1	4.9	4.8		28.0
30.0							29.6m×5.3	5.1	5.0	4.9	4.8	4.7	4.6	4.4	4.3	4.1		30.0
32.0								4.6	4.5	4.4	4.2	4.1	4.0	3.9	3.7	3.6		32.0
34.0								32.2m×4.5	4.0	3.9	3.7	3.6	3.5	3.3	3.2	3.0		34.0
36.0									34.8m×3.8	3.4	3.3	3.1	3.0	2.9	2.8	2.6		36.0
38.0										37.4m×3.1	2.9	2.8	2.6	2.5	2.3	2.2		38.0
40.0											2.5	2.4	2.3	2.1	1.9	1.8		40.0
42.0												2.0	2.0	1.8	1.6	1.5		42.0
44.0												42.6m×1.9	1.6	1.4				44.0
46.0													45.2m×1.4					46.0

## Jib rated lifting loads

### 31~37m boom

(Unit : Metric ton)

Boom length (m)	31						34						37						
	10		16		22		10		16		22		10		16		22		
Jib length (m)	10°	30°	10°	30°	10°	30°	10°	30°	10°	30°	10°	30°	10°	30°	10°	30°	10°	30°	
Jib offset angle	10°	30°	10°	30°	10°	30°	10°	30°	10°	30°	10°	30°	10°	30°	10°	30°	10°	30°	
Working radius (m)																			
10.0	10.2m×12.0						10.7m×12.0								11.2m×12.0				
12.0	12.0	13.2m×12.0	12.7m×12.0				12.0	13.7m×12.0	13.2m×12.0						12.0		13.8m×12.0		
14.0	12.0	12.0	12.0			14.7m×10.0	12.0	12.0	12.0			15.2m×10.0		12.0	14.2m×12.0	12.0			15.7m×10.0
16.0	12.0	12.0	12.0	17.2m×10.0	10.0		12.0	12.0	12.0	17.7m×10.0	10.0			12.0	12.0	12.0			10.0
18.0	11.8	12.0	12.0	10.0	9.5		11.7	12.0	12.0	10.0	9.6	21.2m×6.5	11.6	12.0	11.9	18.2m×10.0	9.8		
20.0	10.2	10.5	10.5	9.8	9.0	20.7m×6.5	10.0	10.4	10.4	9.9	9.2	6.5	9.9	10.3	10.3	10.0	9.4	21.7m×6.5	
22.0	8.9	9.2	9.2	9.2	8.6	6.5	8.7	9.0	9.0	9.4	8.8	6.5	8.6	9.0	8.9	9.4	9.0	6.5	
24.0	7.8	8.0	8.1	8.4	8.2	6.5	7.7	7.9	7.9	8.4	8.1	6.5	7.5	7.8	7.8	8.3	8.0	6.5	
26.0	6.9	7.1	7.2	7.5	7.3	6.4	6.8	7.0	7.0	7.4	7.2	6.5	6.6	6.9	6.9	7.3	7.1	6.5	
28.0	6.1	6.3	6.4	6.7	6.5	6.2	6.0	6.2	6.3	6.6	6.4	6.3	5.9	6.1	6.2	6.5	6.3	6.3	
30.0	5.5	5.7	5.7	6.0	5.9	6.0	5.4	5.5	5.6	5.9	5.8	6.1	5.2	5.4	5.5	5.8	5.7	6.1	
32.0	4.9	5.1	5.2	5.4	5.3	5.6	4.8	4.9	5.0	5.3	5.2	5.5	4.7	4.9	4.9	5.2	5.1	5.5	
34.0	4.4	4.5	4.7	4.9	4.8	5.1	4.3	4.4	4.5	4.8	4.7	5.0	4.2	4.3	4.4	4.7	4.6	4.9	
36.0	4.0	4.1	4.2	4.4	4.4	4.6	3.9	4.0	4.1	4.3	4.2	4.5	3.7	3.9	4.0	4.2	4.1	4.4	
38.0	3.6	3.7	3.8	4.0	4.0	4.2	3.5	3.6	3.7	3.9	3.8	4.1	3.4	3.5	3.6	3.8	3.7	4.0	
40.0		38.6m×3.5	3.5	3.6	3.6	3.8	3.1	3.2	3.3	3.5	3.5	3.7	3.0	3.1	3.2	3.4	3.4	3.6	
42.0			3.2	3.3	3.3	3.5	40.6m×3.0	41.2m×3.0	3.0	3.1	3.2	3.4	2.7	2.7	2.9	3.1	3.1	3.3	
44.0			43.8m×2.9	2.9	3.0	3.2			2.7	2.8	2.9	3.1	43.1m×2.5	43.8m×2.4	2.6	2.7	2.8	3.0	
46.0				44.7m×2.8	2.8	2.9			2.4	2.5	2.6	2.8			2.3	2.4	2.5	2.7	
48.0					2.5	2.6			46.3m×2.4	47.2m×2.3	2.3	2.5			2.0	2.1	2.2	2.4	
50.0					49.4m×2.3	2.3					2.1	2.2			49.0m×1.9	49.8m×1.8	2.0	2.1	
52.0						50.6m×2.2					1.9	2.0					1.7	1.9	
54.0												53.2m×1.8					1.5	1.6	
56.0																			
58.0																			

### 40~46m boom

(Unit : Metric ton)

Boom length (m)	40						43						46						
	10		16		22		10		16		22		10		16		22		
Jib length (m)	10°	30°	10°	30°	10°	30°	10°	30°	10°	30°	10°	30°	10°	30°	10°	30°	10°	30°	
Jib offset angle	10°	30°	10°	30°	10°	30°	10°	30°	10°	30°	10°	30°	10°	30°	10°	30°	10°	30°	
Working radius (m)																			
10.0	11.8m×12.0																		
12.0	12.0						12.3m×12.0						12.8m×12.0						
14.0	12.0	14.7m×12.0	14.3m×12.0				12.0	15.3m×12.0	14.8m×12.0				12.0	15.8m×12.0	15.3m×12.0				
16.0	12.0	12.0	12.0			16.2m×9.5	12.0	12.0	12.0			16.7m×10.0	12.0	12.0	12.0			17.3m×10.0	
18.0	11.5	12.0	11.8	18.7m×10.0	9.5		11.4	11.9	11.7	19.3m×10.0	10.0		11.2	11.8	11.6	19.8m×10.0	10.0		
20.0	9.8	10.2	10.2	10.0	9.5		9.7	10.1	10.0	10.0	9.6		9.6	10.1	9.9	10.0	9.8		
22.0	8.5	8.9	8.8	9.4	9.0	22.2m×6.5	8.4	8.8	8.7	9.3	8.9	22.8m×6.5	8.3	8.7	8.6	9.2	8.8	23.3m×6.5	
24.0	7.4	7.8	7.7	8.2	7.9	6.5	7.3	7.6	7.6	8.1	7.8	6.5	7.2	7.6	7.5	8.0	7.7	6.5	
26.0	6.5	6.8	6.8	7.2	7.0	6.5	6.4	6.7	6.7	7.1	6.9	6.5	6.3	6.6	6.6	7.1	6.8	6.5	
28.0	5.8	6.0	6.0	6.4	6.2	6.4	5.6	5.9	5.9	6.3	6.1	6.5	5.5	5.8	5.8	6.2	6.0	6.5	
30.0	5.1	5.3	5.4	5.7	5.5	6.0	5.0	5.2	5.3	5.6	5.4	5.9	4.9	5.1	5.1	5.5	5.3	5.8	
32.0	4.6	4.8	4.8	5.1	5.0	5.4	4.4	4.6	4.7	5.0	4.8	5.3	4.3	4.5	4.6	4.9	4.7	5.2	
34.0	4.1	4.2	4.3	4.6	4.5	4.8	3.9	4.1	4.2	4.5	4.3	4.7	3.8	4.0	4.1	4.4	4.2	4.7	
36.0	3.6	3.8	3.9	4.1	4.0	4.4	3.5	3.7	3.7	4.0	3.9	4.3	3.4	3.6	3.6	3.9	3.8	4.2	
38.0	3.2	3.4	3.5	3.7	3.6	3.9	3.1	3.3	3.3	3.6	3.5	3.8	2.9	3.1	3.2	3.5	3.4	3.7	
40.0	2.9	3.0	3.1	3.3	3.3	3.5	2.7	2.9	3.0	3.2	3.1	3.4	2.6	2.7	2.8	3.1	3.0	3.4	
42.0	2.5	2.6	2.8	3.0	2.9	3.2	2.3	2.5	2.6	2.8	2.8	3.1	2.2	2.4	2.5	2.7	2.7	3.0	
44.0	2.2	2.3	2.5	2.6	2.6	2.9	2.0	2.1	2.3	2.5	2.5	2.8	1.8	2.0	2.1	2.4	2.3	2.7	
46.0	45.8m×1.9	2.0	2.2	2.3	2.3	2.6	1.7	1.8	2.0	2.2	2.2	2.5	1.5	1.7	1.8	2.1	2.0	2.3	
48.0		46.4m×1.9	1.9	2.0	2.1	2.3	1.4	1.5	1.7	1.9	1.9	2.2			1.5	1.7	1.7	2.0	
50.0			1.6	1.7	1.8	2.0			1.4	1.6	1.6	1.9				1.4	1.5	1.8	
52.0				1.4	1.6	1.7						1.6							
54.0						1.5													
56.0																			
58.0																			

## Jib rated lifting loads

### ■ 49~52m boom

(Unit : Metric ton)

Boom length (m)	49						52			
	10		16		22		10		16	
Jib length (m)										
Jib offset angle	10°	30°	10°	30°	10°	30°	10°	30°	10°	30°
Working radius (m)										
10.0										
12.0	13.3m× 12.0						13.8m× 12.0			
14.0	12.0		15.9m× 11.5				12.0			
16.0	12.0	16.3m× 11.5	11.5		17.8m× 10.0		12.0	16.8m× 11.5	16.4m× 11.0	
18.0	11.1	11.5	11.5		10.0		11.0	11.5	11.0	
20.0	9.5	10.0	9.8	20.3m× 9.0	9.9		9.4	9.9	9.7	20.8m× 9.0
22.0	8.2	8.6	8.5	9.0	8.7	23.8m× 6.5	8.0	8.5	8.4	9.0
24.0	7.1	7.5	7.4	8.0	7.6	6.5	6.9	7.4	7.3	7.9
26.0	6.2	6.5	6.5	7.0	6.7	6.5	6.0	6.4	6.4	6.9
28.0	5.4	5.7	5.7	6.2	5.9	6.5	5.3	5.6	5.6	6.1
30.0	4.8	5.0	5.0	5.4	5.2	5.8	4.6	4.9	4.9	5.3
32.0	4.2	4.4	4.5	4.8	4.6	5.1	4.1	4.3	4.3	4.7
34.0	3.7	3.9	4.0	4.3	4.1	4.6	3.5	3.8	3.8	4.2
36.0	3.2	3.5	3.5	3.8	3.7	4.1	3.1	3.3	3.4	3.7
38.0	2.8	3.0	3.1	3.4	3.3	3.7	2.6	2.9	2.9	3.3
40.0	2.4	2.6	2.7	3.0	2.9	3.3	2.2	2.5	2.5	2.9
42.0	2.0	2.2	2.3	2.6	2.5	2.9	1.8	2.1	2.1	2.5
44.0	1.7	1.9	2.0	2.3	2.2	2.6	1.5	1.7	1.8	2.1
46.0		1.5	1.7	1.9	1.9	2.2			1.5	1.8
48.0				1.6	1.6	1.9				1.4
50.0						1.6				
52.0										
54.0										
56.0										
58.0										

#### Notes:

- All rated loads are based on the machine being operated on a firm, level, uniformly supporting surface ground, at any point of 360° around the machine within 78% of tipping load and forward stability factor over 1.15.
- Working radius is the horizontal distance from the center of rotation to the vertical line through the center of gravity of the load.
- To determine the actual load for the main boom, the weight of all lifting devices such as a hook must be reduced from the lifting load.

90 ton hook	1.20ton	50 ton hook	0.95ton
30 ton hook	0.80ton	12 ton hook	0.40ton

- When the jib (10.0—22.0m) is equipped, the following weight must be reduced from the lifting load to determine the rated lifting load for the main boom.

Jib length (m) (Offset angle)	Aux. jib	10.0		16.0		22.0	
		10°	30°	10°	30°	10°	30°
Weight (ton)	0.8	1.9	2.0	2.3	2.6	2.8	3.2

- To determine the actual load for the aux. jib, the weight of 0.5 ton must be reduced from the lifting load.
- Depending on the number of part lines, the rated lifting load is limited as follows.

1 part line	12.0 ton	5 part lines	55.0 ton
2 part lines	22.0 ton	6 part lines	66.0 ton
3 part lines	33.0 ton	7 part lines	77.0 ton
4 part lines	44.0 ton	8 part lines	90.0 ton

- The rated load shown in bold lines are based on structural strength factors.



## Transport Dimensions and Weights

<p><b>Base Machine</b> with Crawlers, A-frame, Inner boom, Wire ropes Weight: 53,400kg, Width: 3,340mm</p>	<p><b>Crawler Frame</b> Weight: 10,100kg, Width: 1,100mm</p>
<p><b>Base Machine</b> with Crawlers, A-frame, Wire ropes Weight: 49,800kg, Width: 3,340mm</p>	<p><b>Counterweight</b> Weight: Total 30,600kg</p> <ul style="list-style-type: none"> <li>1 (L) 3,000kg</li> <li>2 (R) 3,000kg</li> <li>3 7,800kg</li> <li>4 8,250kg</li> <li>5 (SA) 8,500kg</li> </ul>
<p><b>Inner Boom</b> Weight: 1,720kg      <b>Outer Boom</b> Weight: 1,770kg</p>	

Attachments and Parts	Dimensions (L×H×W)	Weight
3m insert boom	3,130mm × 1,820mm × 1,720mm	500kg
6m insert boom	6,130mm × 1,820mm × 1,720mm	790kg
9m insert boom	9,130mm × 1,820mm × 1,720mm	1,100kg
5m Jib inner (with Jib Strut)	5,120mm × 1,230mm × 980mm	820kg
5m Jib outer	5,400mm × 940mm × 850mm	310kg
6m insert Jib	6,080mm × 950mm × 830mm	190kg
Auxiliary Jib	1,530mm × 650mm × 430mm	240kg
90 ton hook block	2,060mm × 480mm × 700mm	1,200kg
50 ton hook block	2,080mm × 400mm × 740mm	950kg
30 ton hook block	1,950mm × 380mm × 740mm	800kg
12 ton hook block (ball)	1,260mm × DΦ400	400kg
12 ton hook block (slim)	1,520mm × DΦ360	400kg

**IHI** IHI Construction Machinery Limited  
 Kishi-Tokai Bldg., 8-4-4, Nishikamata, Ota-ku, Tokyo 144-8577 JAPAN  
 Phone: +81-3-5714-8844 Fax: +81-3-5714-8840, 8841  
<http://www.ihi-kenki.co.jp/english>

Specifications are subject to change without notice due to technical improvements or modifications.  
 Distributed by

