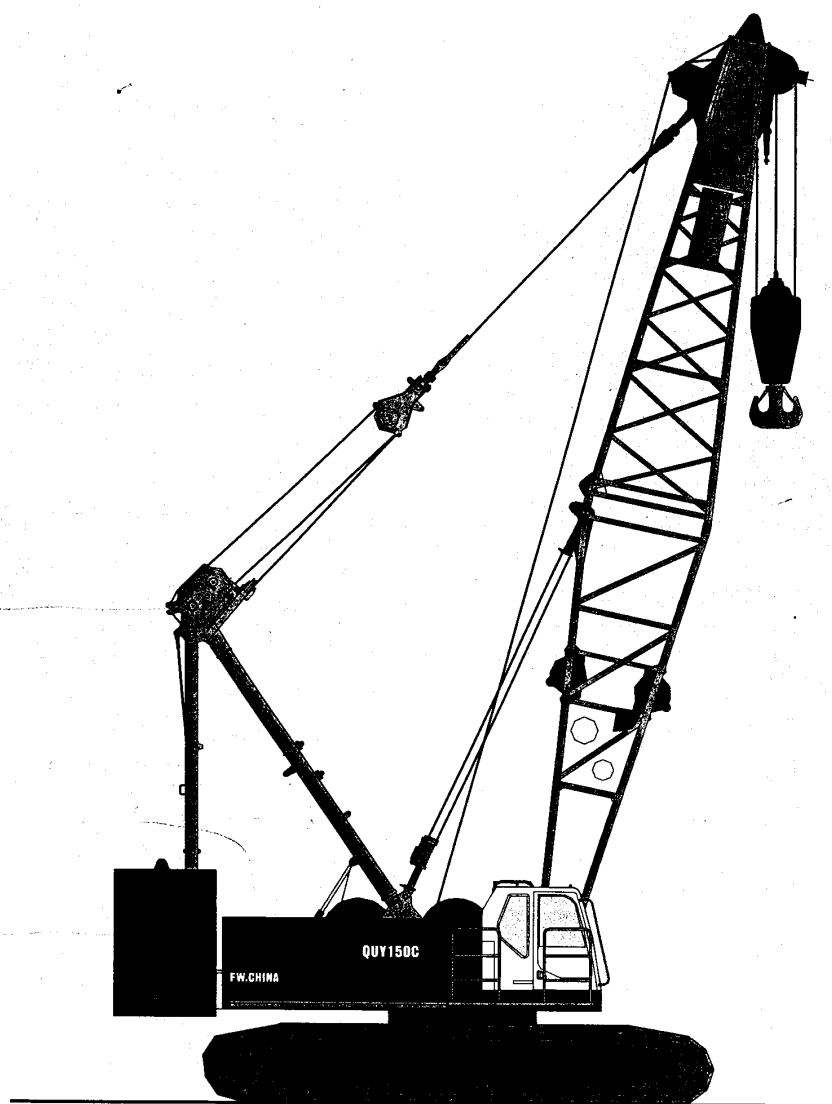


液压式履带起重机

HYDRAULIC CRAWLER CRANE

QY150C





标准主臂工况载荷表

Load Chart (Standard Boom)



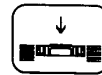
15.2m-81.2m



360°



55.97t

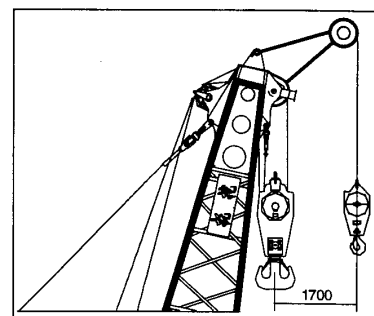
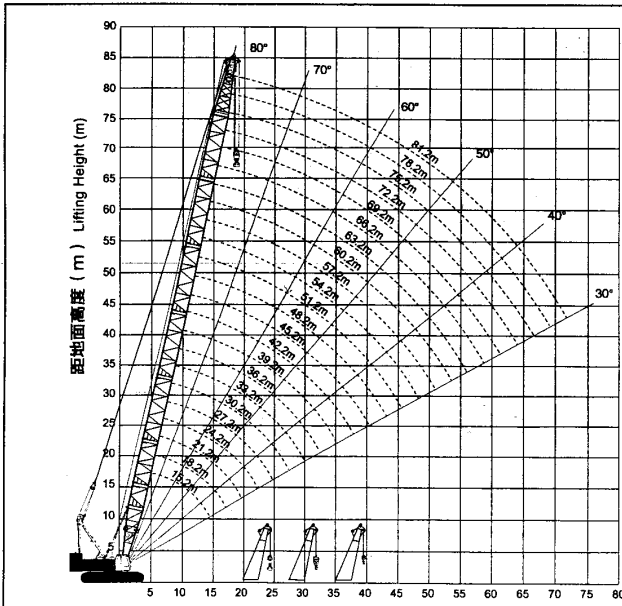


10.2t

Boom Length (m)	15.2	21.2	27.2	33.2	39.2	45.2	51.2	57.2	63.2	69.2	75.2	81.2	Boom Length (m)
4	4.6/150												4
5	150	5.6/140.9											5
6	150	139	6.7/121.6										6
7	128.3	123	117.4	7.7/98.8									7
8	103.1	102.1	98	94.1	8.7/80.9								8
9	86	85.7	84	81	78.1	9.8/68.1							9
10	73.7	73.4	73.1	71	68.7	66.4	10.8/56.7	11.9/46.8					10
12	57.1	56.7	56.5	55.1	55	53.4	51.7	46.6	12.9/38.5	14.0/31.7			12
14	46.4	46.1	45.8	45.4	45.2	44.4	43.1	41.8	37.1	31.6	15.0/25.9		14
16	14.8/43	38.6	38.3	38	37.7	37.4	36.8	35.7	34.6	29.4	25	16.0/21.0	16
18		33.2	32.8	32.5	32.2	31.9	31.5	31	30.1	27.4	23.2	19.4	18
20		28.9	28.6	28.3	28	27.7	27.3	27	26.4	25.5	21.6	17.9	20
22		20.0/28.9	25.3	24.9	24.7	24.3	24	23.7	23.4	22.7	20	16.6	22
24			22.6	22.2	22	21.6	21.3	21	20.6	20.3	18.6	15.3	24
26			25.2/21.2	20	19.7	19.4	19	18.7	18.4	18	17.3	14.1	26
28				18.1	17.8	17.5	17.1	16.8	16.5	16.1	15.8	13	28
30				16.5	16.2	15.9	15.5	15.2	14.9	14.5	14.2	12	30
32				30.4/16.2	14.8	14.5	14.1	13.8	13.5	13.1	12.8	11	32
34					13.6	13.3	12.9	12.6	12.3	11.9	11.6	10.1	34
36					35.6/12.7	12.2	11.8	11.5	11.2	10.8	10.5	9.3	36
38						11.3	10.9	10.6	10.3	9.9	9.6	8.5	38
40						10.4	10	9.7	9.4	9	8.7	7.7	40
42						40.8/10.1	9.3	9	8.7	8.3	8	7	42
44							8.6	8.3	8	7.6	7.3	6.3	44
46							8	7.7	7.3	7	6.7	5.7	46
48							46.0/8.0	7.1	6.8	6.4	6.1	5	48
50								6.6	6.3	5.9	5.6	4.4	50
52								51.2/6.3	5.8	5.4	5.1	3.9	52
54									5.3	5	4.6	3.3	54
56									4.9	4.6	4.2	2.8	56
58									56.4/4.9	4.2	3.9	2.3	58
60										3.8	3.5	1.8	60

1. 载荷表所表示的额定总载荷值为水平坚硬地面上, 理想作业条件的最大允许值。
 2. 载荷表所示的值以吨为单位, 并取倾覆力矩的75%以内值。
 3. 载荷表所示的值基于风速为10米/秒, 风速16m/s, 平轴负载而计算, 不包括如突然停止的冲击负载, 地面坚硬情况及操作速度。如在此条件下, 驾驶员必须进行减载作业。同时,
1. The rated load in the table is the maximum allowed value when the crane works on the level and firm ground and under the ideal conditions.
 2. The unit in the table is ton and the rated load capacity is 75% of tipping load.
 3. The rated load is calculated under the conditions of wind speed 16m/s and stable load, not including impacting load, the conditions of ground and operating

4. 侧面的稳定性小。
- 载荷表中的值还要扣除如吊钩, 吊具等的自重。
 吊钩自重 150吨钩-3.2吨 100吨钩-1.9吨 60吨钩-0.76吨 25吨钩-0.9吨
 12.5吨钩-0.658吨
 speed. So the driver should reduce corresponding load. Weight of hook and slings should be deducted from the capacity ratings. Weight of hook: 150t hook.....3.2t 100t hook.....1.9t 50t hook.....0.76t 25t hook.....0.9t 12.5t hook.....0.658t
 4. The side stability is weak.



当用加长臂的辅助吊钩工作时, 在相间工作半径下吊重能力与单主臂工况相同, 但不应大于12.5吨。

When the auxiliary hook of runner is working, the lifting capacity is same as that of main boom under the same working radius. But the load should not exceed 12.5t.

标准主臂工况作业范围
Working Range (Standard boom)

作业半径 (m) Working Radius (m)