

SKYJACK™



ZB8044 | 8,000 lb. Capacity, 44 ft. Lifting Height



ZOOM BOOM SERIES

Telescopic MATERIAL HANDLER

ZOOM BOOM SERIES ZB8044

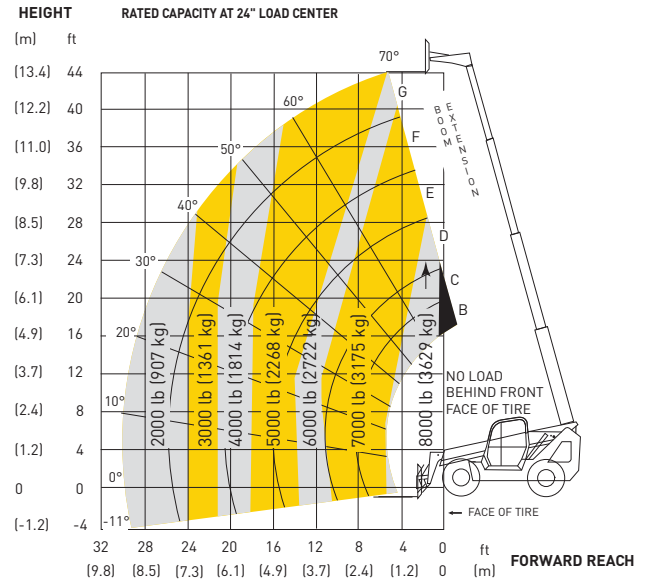
DIMENSIONS

Wheelbase.....	10'	3.05 m
Overall Width.....	8'5"	2.57 m
Overall Height (stowed)	7'10"	2.39 m
Overall Length (less forks)	19'11"	6.07 m
Ground Clearance.....	19"	48 cm
Operating Weight	24,200 lb	10,977 kg
Turning Radius (outside).....	11'9"	3.58 m
Frame Leveling (degrees).....	+/- 11	

SPECIFICATIONS

Engine	Cummins QSB 4.5 Turbocharged Diesel
HP @ rpm	110 horsepower @ 2500 rpm
Transmission.....	Dana powershift, 4 speeds forward and 2 reverse
Top Speed.....	22 mph (35 km/h)
Axles.....	Dana steerable outboard planetary
Brakes.....	Service - 4 wheel wet disc Parking - SAHR on front axle
Tires	14 x 24 12PR grip lug
Steering.....	3 mode (2 wheel, 4 wheel, crab)
Boom.....	Maximum lift height - 44' (13.41 m) Maximum forward reach - 30' (9.14 m) Dual shaft type carriage Carriage rollback - 22 degrees Carriage forward tilt - 79 degrees
General.....	Fuel/hydraulic oil tank - 41 US gal. (155L) Hydraulic tank - 37 US gal. (140L) 12 volt - 95 amp. alternator

CAPACITY CHART



STANDARD EQUIPMENT

- Rear Axle "Stable-Lock" Cylinder with backup accumulator
- Standard quick attach carriage mount system
- Dual lift cylinders
- ROPS/FOPS certified cab
- See through high pivot boom mount design
- Rear window and side screen
- Under cab storage compartment / step
- Rubber isolated bottom mount cab design
- Adjustable Suspension Seat with seat belt
- Dual joystick pilot operated controls for boom and frame level functions
- Tilt adjustable joystick console
- Gauge instrumentation
- Electronic Powerview engine monitor/gauge
- Lockable steel swing up engine doors
- Engine Block Heater
- Two Stage Air Cleaner
- Brake Accumulator for Dead Engine Braking
- Brake Activated Transmission Disconnect
- 37 gallon steel hydraulic tank
- 41 gallon steel fuel tank
- Horn and backup alarm
- Mirrors, right and left side
- Easy to remove steel component and access covers
- Operator/Maintenance and Parts manuals
- 12 months/2000 hour warranty (4 years on structure)

OPTIONAL EQUIPMENT

- Turn signals/lights
- Working lights
- Flashing beacon
- Auxiliary hydraulics
- Enclosed operator cab
- Dual batteries
- Foam filled tires
- Fenders
- Air conditioning
- Outriggers
- Mine code specification

ATTACHMENTS

- Various carriage/fork sizes
- Fork positioner
- Side tilt carriage
- Swing carriage
- Material bucket
- Winch
- 12' Jib boom

Note: Materials and specifications are subject to change without notice.



55 Campbell Rd. Guelph, ON Canada N1H 1B9
 Sales Inquiries: 1-877-755-4387 (1-877-SJLIFTS)
 Main Switchboard: 1-800-265-2738
 Phone: 519-837-0888
 Fax: 519-837-8104
 Email: skyjack@skyjack.com

IMPORTANT

- Machine design complies with ANSI/ITSDF B56.6-2005 stability requirements for rough terrain forklifts.
- Rated capacities shown are with machine on firm level ground, steered straight with frame level and on properly inflated tires
- Read boom angle and boom extension, then determine allowable load from chart.
- Do not exceed rated loads as dangerous and unstable machine conditions will result.
- Always travel with boom retracted in the lowest possible position.
- Never position fork carriage behind front face of tire.