

**LINK-BELT  
SPEEDER**

# HC-98A 35-Ton Zephyrcrane

## Clearances - Working Ranges - Lifting Capacities

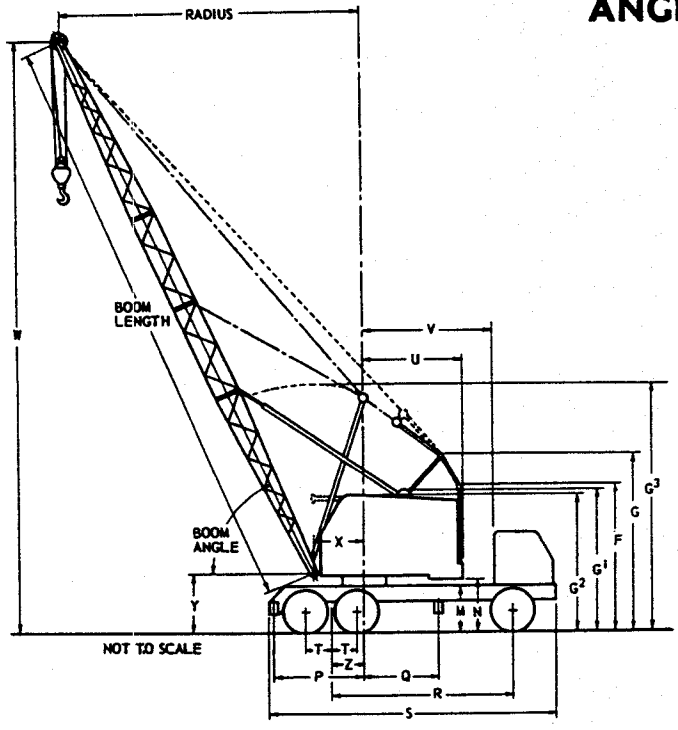
35 TON TRUCK MOUNTED CRANE (PCSA CLASS 12-196)

3-AXLE CARRIER

ANGLE OR TUBULAR "HI-LITE" BOOM

(Supersedes Flysheets CRF4097-12-61)

**GENERAL INFORMATION ONLY**



GENERAL DIMENSIONS		
Basic angle boom length		40'
Basic tubular "Hi-Lite" boom length		40'
Minimum clearance basic angle boom upper facing front		12'10"
Minimum clearance basic "Hi-Lite" boom upper facing front		16' 8"
Over-all height heavy duty retractable gantry lowered	F	12'10"
Over-all height heavy duty retractable gantry raised	G	16' 2"
Over-all height low gantry <sup>③</sup>	G1	12' 4"
Over-all cab height	G2	11'11"
Over-all cab width		8' 0"
Maximum height "Hi-Lite" boom gantry	G3	27' 3"
Minimum height "Hi-Lite" boom gantry with boom horizontal	G3	18' 4"
Over-all height top of ring gear plate	M	4' 4"
Ground clearance under counterweight	N	5' 0"
Centerline rotation to rear outrigger center	P	8' 2"
Centerline rotation to front outrigger center	Q	8' 2"
Truck wheelbase	R	17'11"
Over-all length over rear outrigger box <sup>①</sup>	S	27' 4"
Center of wheel to bogie pivot	T	2' 3"
Tailswing of counterweight	U	11' 5"
Centerline rotation to back of truck cab	V	13' 5"
Radius to boom hinge pin—angle boom	X	3' 2"
Radius to boom hinge pin—tubular "Hi-Lite" boom	X	4' 1"
Height of boom hinge pin—angle boom	Y	6' 8"
Height of boom hinge pin—tubular "Hi-Lite" boom	Y	5' 3"
Centerline rotation to rear axle bogie pivot	Z	3' 0"
Maximum over-all width—(over outrigger box) 9' axle		9' 0"
Maximum over-all width—(outriggers extended) 9' axle		17' 6"
Maximum over-all width—(over outrigger box) 10' axle		10' 0"
Maximum over-all width—(outriggers extended) 10' axle		17' 6"

① Rear outrigger box removable for use with shovel and hoe attachments. Consult factory if hoe and shovel dimensions or working ranges are required.  
 ② Low gantry available at reduction in price for angle booms only up to and including 55'. Consult factory if capacities required.

MAXIMUM BOOM LENGTHS	Angle Boom	Tubular Boom
Max. boom machine can pick clear of ground over rear and travel <sup>③</sup> .....	100'	90'
Max. boom plus jib machine can pick clear of ground over rear and travel <sup>③</sup> .....	80' + 40' jib	70' + 50' jib
Max. boom machine can pick off ground on outriggers, over rear .....	100'	150'
over side .....	100'	140'
Max. boom plus jib machine can pick off ground on outriggers, over rear .....	100' + 40' jib	120' + 50' jib
over side .....	100' + 40' jib	110' + 50' jib

③ Maximum travel speed 5 m.p.h.

**BRIEF SPECIFICATIONS**

**CARRIER**

Heavy duty all-welded frame. 12:00x20, 14 ply tires—dual tires on rear tandem axles, single tires on front axle. Six-wheel air brakes. Hydraulic power steering. 6x4 drive. 44'9" turning radius over corner of bumper. Planetary rear axle. Standard engine Waukesha 145GZ gasoline, 240 bhp, 109 net h.p. @ 1710 r.p.m. governed speed. 12 speeds forward, 3 speeds reverse. Road speed up to 40 m.p.h.

**POWER UNITS**

Suitable for operation up to 4,000' above sea level. For operation at higher altitudes consult factory.  
 Standard—Waukesha 140GZ gasoline engine with friction clutch, 6 cylinder, 109 net h.p. @ 1710 r.p.m. full load speed.  
 Optional at extra cost—Gasoline: Waukesha.  
 Diesel: Caterpillar, Cummins, General Motors and International.



These specifications comply with the recommended Commercial Standard CS90-58, developed under the National Bureau of Standards and issued by the United States Department of Commerce.

**LIFTING CRANE, CLAMSHELL, DRAGLINE**

Approximate working weight with 40' standard angle boom, retractable high gantry, gasoline engine, but no hookblock, tagline or fairlead ..... 73,670 lbs.

Swing speed .....	4 r.p.m.	
Lifting Crane Lagging	Line Pull	Line Speed
13/4" hoist (front) .....	23,100 lbs.	@ 146 f.p.m.
13/4" hoist (rear) .....	22,400 lbs.	@ 146 f.p.m.
Clamshell Lagging		
15/4" closing (front) .....	20,200 lbs.	@ 167 f.p.m.
15/4" holding (rear) .....	19,600 lbs.	@ 167 f.p.m.
Dragline Lagging		
13/4" inhaul (front) .....	23,100 lbs.	@ 146 f.p.m.
15/4" hoist (rear) .....	19,600 lbs.	@ 167 f.p.m.

**WE ARE CONSTANTLY IMPROVING OUR PRODUCTS AND THEREFORE RESERVE THE RIGHT TO CHANGE DESIGNS AND SPECIFICATIONS**

For Certified Dimensions, Consult Factory

# LINK-BELT SPEEDER

Link-Belt Speeder Corp.  
Cedar Rapids, Iowa

Link-Belt Speeder (Canada), Ltd.  
Woodstock, Ontario

Printed in U.S.A.

7262-67-11-12-62

**HC-98A LIFTING CAPACITIES<sup>①</sup> WITH RETRACTABLE HIGH GANTRY  
3-AXLE CARRIER — 9' AXLE  
— ANGLE BOOM —**

**GENERAL INFORMATION ONLY**

BOOM			W Boom Point Height	WITH OUTRIGGERS Side or Rear	ON TIRES		BOOM			W Boom Point Height	WITH OUTRIGGERS Side or Rear	ON TIRES	
Length	Radius	Angle			Side	Rear	Length	Radius	Angle			Side	Rear
40'	10'	80°	46' 1"	70,000*	36,910*	62,770	80' ②	20'	78°	84' 11"	41,880*	15,030	23,590
	12'	77°	45' 8"	70,000*	31,610*	48,420		25'	74°	83' 8"	32,020*	10,990	17,550
	15'	73°	44' 10"	57,000*	23,610	35,870		30'	70°	82' 0"	25,720*	8,430	13,750
	20'	65°	43' 0"	43,400*	16,250	24,790		35'	67°	80' 2"	21,300*	6,660	11,140
	25'	57°	40' 3"	33,500*	12,200	18,750		40'	63°	77' 8"	18,900	5,370	9,230
	30'	48°	36' 4"	27,200*	9,640	14,950		45'	59°	74' 11"	15,900	4,380	7,780
	35'	37°	31' 0"	22,700*	7,870	12,330		50'	54°	71' 7"	13,620	3,600	6,630
40'	23°	22' 4"	19,880	6,570	10,420	55'	50°	67' 8"	11,840	2,970	5,710		
50'	12'	80°	55' 11"	68,700*	31,120*	48,120	60'	45°	63' 0"	10,400	2,450	4,950	
	15'	76°	55' 3"	56,530*	23,300	35,570	65'	39°	57' 6"	9,220	2,020	4,310	
	20'	70°	53' 9"	43,020*	15,950	24,490	70'	33°	50' 8"	8,220	1,640	3,760	
	25'	64°	51' 8"	33,130*	11,900	18,450	75'	26°	41' 11"	7,380	1,320	3,290	
	30'	58°	48' 11"	26,830*	9,330	14,650	80'	16°	29' 1"	6,600	1,050	2,890	
	35'	51°	45' 3"	22,350*	7,560	12,030	90' ②	20'	79°	95' 1"	41,500*	14,730	23,290
	40'	43°	40' 6"	19,640	6,270	10,120		25'	76°	94' 0"	31,650*	10,690	17,250
45'	33°	34' 2"	16,660	5,280	8,670	30'		73°	92' 7"	25,350*	8,130	13,450	
50'	21°	24' 3"	14,400	4,500	7,530	35'		69°	90' 10"	20,950*	6,360	10,840	
60'	15'	79°	65' 6"	56,060*	22,990	35,270		40'	66°	88' 9"	18,650	5,070	8,930
	20'	74°	64' 3"	42,460*	15,640	24,190		45'	62°	86' 4"	15,640	4,080	7,480
	25'	69°	62' 7"	32,760*	11,600	18,150		50'	59°	83' 6"	13,370	3,300	6,330
	30'	64°	60' 4"	26,460*	9,030	14,350	55'	55°	80' 3"	11,580	2,670	5,410	
	35'	58°	57' 6"	22,000*	7,260	11,730	60'	51°	76' 5"	10,130	2,150	4,650	
	40'	52°	54' 1"	19,390	5,970	9,830	65'	47°	72' 1"	8,950	1,720	4,010	
	45'	46°	49' 8"	16,410	4,980	8,370	70'	42°	66' 11"	7,950	1,350	3,460	
50'	39°	44' 4"	14,140	4,200	7,230	75'	37°	60' 11"	7,110	1,030	3,000		
55'	30°	37' 0"	12,370	3,570	6,300	80'	31°	53' 6"	6,380	750	2,590		
60'	19°	25' 11"	10,930	3,050	5,540	85'	24°	44' 2"	5,750	500	2,230		
70' ②	15'	80°	75' 8"	55,590*	22,680	34,970	100' ②	20'	80°	105' 3"	41,120*	14,420	22,990
	20'	76°	74' 8"	42,260*	15,340	23,890		25'	77°	104' 3"	31,280*	10,380	16,950
	25'	72°	73' 2"	32,390*	11,290	17,850		30'	74°	103' 0"	24,980*	7,820	13,150
	30'	68°	71' 3"	26,090*	8,730	14,050		35'	71°	101' 6"	20,600*	6,060	10,540
	35'	63°	69' 0"	21,650*	6,960	11,440		40'	68°	99' 8"	18,400	4,770	8,630
	40'	58°	66' 2"	19,140	5,670	9,530		45'	65°	97' 6"	15,390	3,780	7,180
	45'	53°	62' 9"	16,150	4,680	8,070		50'	62°	95' 0"	13,110	3,000	6,030
	50'	48°	58' 8"	13,880	3,900	6,930		55'	59°	92' 2"	11,310	2,370	5,110
	55'	42°	53' 8"	12,100	3,270	6,010		60'	55°	88' 11"	9,870	1,850	4,350
	60'	36°	47' 5"	10,670	2,750	5,240		65'	52°	85' 3"	8,680	1,420	3,710
	65'	28°	39' 6"	9,490	2,320	4,600		70'	48°	81' 1"	7,680	1,050	3,170
	70'	17°	27' 4"	8,500	1,940	4,060		75'	44°	76' 3"	6,840	730	2,700
								80'	40°	70' 8"	6,110	450	2,290
						90'	30°	56' 3"	4,920	-----	1,620		
						100'	15°	31' 8"	3,990	-----	1,080		

**DRAGLINE - CLAMSHELL - MAGNET CAPACITIES<sup>③</sup>**

BOOM		ANGLE BOOM						TUBULAR BOOM					
Length	Radius	Boom Angle	Boom Point Height	9' AXLE		10' AXLE		Boom Angle	Boom Point Height	9' AXLE		10' AXLE	
				Dragline	Clamshell- Magnet	Dragline	Clamshell- Magnet			Dragline	Clamshell- Magnet	Dragline	Clamshell- Magnet
40	10'	80°	46' 1"	---	10,000	---	10,000	---	---	---	---	---	---
	12'	77°	45' 8"	---	10,000	---	10,000	79°	44' 5"	---	10,000	---	10,000
	15'	73°	44' 10"	---	10,000	---	10,000	74°	43' 9"	---	10,000	---	10,000
	20'	65°	43' 0"	---	10,000	---	10,000	67°	41' 11"	---	10,000	---	10,000
	25'	57°	40' 3"	8,500	9,700	8,500	10,000	56°	39' 4"	8,500	9,000	8,500	10,000
	30'	48°	36' 4"	8,500	7,640	8,500	8,100	50°	35' 9"	7,800	7,000	8,300	7,500
	35'	37°	31' 0"	6,950	6,250	7,360	6,600	39°	30' 7"	6,240	5,600	6,650	6,000
39'	30°	24' 0"	6,370‡	---	6,780‡	---	30°	24' 4"	5,550‡	---	5,820‡	---	
40'	23°	22' 4"	---	5,210	---	5,540	26°	22' 10"	---	4,590	---	4,920	
50'	12'	80°	55' 11"	---	10,000	---	10,000	81°	54' 7"	---	10,000	---	10,000
	15'	76°	55' 3"	---	10,000	---	10,000	77°	54' 0"	---	10,000	---	10,000
	20'	70°	53' 9"	---	10,000	---	10,000	71°	52' 8"	---	10,000	---	10,000
	25'	64°	51' 8"	---	9,450	---	10,000	65°	50' 8"	---	8,840	---	9,450
	30'	58°	48' 11"	8,210	7,400	8,500	7,890	59°	48' 0"	7,590	6,800	8,100	7,300
	35'	51°	45' 3"	6,670	6,000	7,100	6,380	52°	44' 6"	6,040	5,420	6,460	5,830
	40'	43°	40' 6"	5,540	4,980	5,890	5,300	44°	40' 0"	4,900	4,410	5,260	4,740
	45'	33°	34' 2"	4,660	4,200	4,960‡	4,480	36°	34' 0"	4,040	3,640	4,350	3,930
47'	30°	30' 3"	4,490‡	---	4,770‡	---	30°	30' 6"	3,730‡	---	4,020‡	---	
50'	21°	24' 3"	---	3,570	---	3,820	23°	25' 0"	---	3,030	---	3,270	
60'	15'	79°	65' 6"	---	10,000	---	10,000	80°	64' 3"	---	10,000	---	10,000
	20'	75°	64' 3"	---	10,000	---	10,000	75°	63' 1"	---	10,000	---	10,000
	25'	69°	62' 7"	---	9,200	---	9,800	70°	61' 6"	---	8,650	---	9,280
	30'	64°	60' 4"	---	7,150	---	7,640	64°	59' 4"	---	6,640	---	7,140
	35'	58°	57' 6"	6,400	5,760	6,840	6,150	59°	56' 8"	5,840	5,250	6,290	5,650
	40'	52°	54' 1"	5,270	4,750	5,620	5,060	53°	53' 4"	4,700	4,240	5,070	4,560
	45'	46°	49' 8"	4,400	3,960	4,700	4,240	47°	49' 1"	3,840	3,460	4,160	3,760
	50'	39°	44' 4"	3,700	3,330	3,980	3,600	40°	43' 11"	3,160	2,850	3,440	3,110
	55'	30°	37' 0"	3,060‡	2,840	3,400‡	3,060	32°	37' 0"	2,610‡	2,450	2,870‡	2,580
	56'	---	---	---	---	---	---	30°	35' 0"	2,530‡	---	2,780‡	---
	60'	19°	25' 11"	---	2,420	---	2,620	21°	27' 0"	---	1,950	---	2,150

**HC-98A LIFTING CAPACITIES<sup>①</sup> WITH RETRACTABLE HIGH GANTRY<sup>④</sup>  
3-AXLE CARRIER WITH OPTIONAL 10' REAR AXLES**

**ANGLE BOOM**

**TUBULAR "HI-LITE" BOOM**

BOOM			W Boom Point Height	WITH OUTRIGGERS Side or Rear	ON TIRES	
Length	Radius	Angle			Side	Rear
10'	10'	80°	46' 1"	70,000*	39,360*	62,770
12'	12'	77°	45' 8"	70,000*	33,810*	48,420
15'	15'	73°	44' 10"	57,000*	25,170	35,870
20'	20'	65°	43' 0"	43,400*	17,270	24,790
25'	25'	57°	40' 3"	33,500*	12,950	18,750
30'	30'	48°	36' 4"	27,200*	10,220	14,950
35'	35'	37°	31' 0"	22,700*	8,350	12,330
40'	40'	23°	22' 4"	19,880	6,980	10,420
12'	12'	80°	55' 11"	68,700*	33,320*	48,120
15'	15'	76°	55' 3"	56,530*	24,870	35,570
20'	20'	70°	53' 9"	43,020*	16,970	24,490
25'	25'	64°	51' 8"	33,130*	12,650	18,450
30'	30'	58°	48' 11"	26,830*	9,920	14,650
35'	35'	51°	45' 3"	22,350*	8,050	12,030
40'	40'	43°	40' 6"	19,640	6,680	10,120
45'	45'	33°	34' 2"	16,660	5,640	8,670
50'	50'	21°	24' 3"	14,400	4,820	7,530
15'	15'	79°	65' 6"	56,060*	24,570	35,270
20'	20'	74°	64' 3"	42,460*	16,660	24,190
25'	25'	69°	62' 7"	32,760*	12,350	18,150
30'	30'	64°	60' 4"	26,460*	9,620	14,350
35'	35'	58°	57' 6"	22,000*	7,750	11,730
40'	40'	52°	54' 1"	19,390	6,380	9,830
45'	45'	46°	49' 8"	16,410	5,340	8,370
50'	50'	39°	44' 4"	14,140	4,520	7,230
55'	55'	30°	37' 0"	12,370	3,860	6,300
60'	60'	19°	25' 11"	10,930	3,310	5,540
15'	15'	80°	75' 8"	55,590*	24,270	34,970
20'	20'	76°	74' 8"	42,260*	16,360	23,890
25'	25'	72°	73' 2"	32,390*	12,050	17,850
30'	30'	68°	71' 3"	26,090*	9,320	14,050
35'	35'	63°	69' 0"	21,650*	7,450	11,440
40'	40'	58°	66' 2"	19,140	6,080	9,530
45'	45'	53°	62' 9"	16,150	5,040	8,070
50'	50'	48°	58' 8"	13,880	4,220	6,930
55'	55'	42°	53' 8"	12,100	3,560	6,010
60'	60'	36°	47' 5"	10,670	3,010	5,240
65'	65'	28°	39' 6"	9,490	2,550	4,600
70'	70'	17°	27' 4"	8,500	2,160	4,060
20'	20'	78°	84' 11"	41,880*	16,060	23,590
25'	25'	74°	83' 8"	32,020*	11,740	17,550
30'	30'	70°	82' 0"	25,720*	9,020	13,750
35'	35'	67°	80' 2"	21,300*	7,150	11,140
40'	40'	63°	77' 8"	18,900	5,780	9,230
45'	45'	59°	74' 11"	15,900	4,740	7,780
50'	50'	54°	71' 7"	13,620	3,920	6,630
55'	55'	50°	67' 8"	11,840	3,260	5,710
60'	60'	45°	63' 0"	10,400	2,710	4,950
65'	65'	39°	57' 6"	9,220	2,250	4,310
70'	70'	33°	50' 8"	8,220	1,860	3,760
75'	75'	26°	41' 11"	7,380	1,530	3,290
80'	80'	16°	29' 1"	6,600	1,230	2,890
20'	20'	80°	105' 3"	41,120*	15,460	22,990
25'	25'	77°	104' 3"	31,280*	11,140	16,950
30'	30'	74°	103' 0"	24,980*	8,420	13,150
35'	35'	71°	101' 6"	20,600*	6,550	10,540
40'	40'	68°	99' 8"	18,400	5,180	8,630
45'	45'	65°	97' 6"	15,390	4,140	7,180
50'	50'	62°	95' 0"	13,110	3,320	6,030
55'	55'	59°	92' 2"	11,310	2,660	5,110
60'	60'	55°	88' 11"	9,870	2,110	4,350
65'	65'	52°	85' 3"	8,680	1,660	3,710
70'	70'	48°	81' 1"	7,680	1,270	3,170
75'	75'	44°	76' 3"	6,840	930	2,700
80'	80'	40°	70' 8"	6,110	640	2,290
85'	85'	35°	64' 2"	5,470	380	1,930
90'	90'	30°	56' 3"	4,920	150	1,620
95'	95'	23°	46' 3"	4,430	-----	1,330
100'	100'	15°	31' 8"	3,990	-----	1,080

BOOM			W Boom Point Height	WITH OUTRIGGERS Side or Rear	ON TIRES	
Length	Radius	Angle			Side	Rear
40'	12'	79°	44' 5"	70,000*	32,430*	47,430
	15'	74°	43' 9"	57,000*	24,250	34,940
	20'	67°	41' 11"	43,400*	16,400	23,930
	25'	56°	39' 4"	33,500*	12,110	17,920
	30'	50°	35' 9"	27,200*	9,410	14,140
	40'	26°	22' 10"	19,210	6,190	9,640
50'	12'	81°	54' 7"	68,700*	32,070*	47,190
	15'	77°	54' 0"	56,530*	24,020	34,710
	20'	71°	52' 8"	43,020*	16,170	23,700
	25'	65°	50' 8"	33,130*	11,890	17,700
	30'	59°	48' 0"	26,830*	9,190	13,910
	40'	44°	40' 0"	19,030	5,970	9,420
60'	15'	80°	64' 3"	56,060*	23,780	34,480
	20'	75°	63' 1"	42,460*	15,950	23,480
	25'	70°	61' 6"	32,760*	11,670	17,470
	30'	64°	59' 4"	26,460*	8,970	13,690
	40'	53°	53' 4"	18,850	5,750	9,200
	50'	40°	43' 11"	13,600	3,910	6,620
80'	20'	79°	83' 8"	41,880*	15,490	23,020
	25'	75°	82' 6"	32,020*	11,220	17,030
	30'	71°	80' 11"	25,720*	8,520	13,250
	40'	63°	76' 9"	18,480	5,310	8,760
	50'	55°	70' 9"	13,220	3,470	6,180
	60'	46°	62' 6"	10,000	2,270	4,510
100'	20'	81°	104' 0"	41,120*	15,040	22,570
	25'	78°	103' 0"	31,280*	10,770	16,580
	30'	75°	101' 10"	24,980*	8,080	12,810
	40'	69°	98' 7"	18,110	4,880	8,320
	50'	63°	94' 1"	12,840	3,040	5,750
	60'	56°	88' 2"	9,610	1,840	4,070
120'	25'	80°	123' 5"	30,540*	10,320	16,140
	30'	78°	122' 5"	24,240*	7,640	12,370
	40'	73°	119' 9"	17,750	4,440	7,890
	50'	68°	116' 1"	12,460	2,600	5,310
	60'	62°	111' 5"	9,220	1,410	3,640
	80'	51°	98' 2"	5,460	-----	1,600
130'	25'	81°	133' 7"	30,170*	10,100	15,910
	30'	79°	132' 7"	23,870*	7,420	12,150
	40'	74°	130' 2"	17,570	4,220	7,670
	50'	69°	126' 11"	12,270	2,380	5,090
	60'	65°	122' 7"	9,030	1,190	3,420
	80'	54°	110' 9"	5,260	-----	1,390
140'	30'	79°	142' 10"	23,500*	7,200	11,930
	40'	75°	140' 7"	17,380	4,000	7,450
	50'	71°	137' 6"	12,080	2,170	4,880
	60'	67°	133' 7"	8,830	970	3,210
	80'	57°	123' 9"	5,060	-----	1,170
	100'	47°	107' 3"	2,940	-----	-----
150'	30'	80°	153' 0"	23,130*	6,970	11,700
	40'	76°	150' 11"	17,200	3,780	7,230
	50'	72°	148' 1"	11,890	1,950	4,660
	60'	68°	144' 5"	8,640	760	2,990
	80'	60°	134' 7"	4,870	-----	960
	100'	50°	120' 7"	2,740	-----	-----
120'	39°	100' 5"	1,380	-----	-----	
140'	25°	68' 8"	430	-----	-----	

These lifting capacities are based upon strength of material. Note ① regarding all other lifting capacities.

**GENERAL INFORMATION ONLY**

# HC-98A LIFTING CAPACITIES<sup>①</sup> WITH RETRACTABLE HIGH GANTRY<sup>④</sup>

## 3-AXLE CARRIER — 9' AXLE

### TUBULAR "HI-LITE" BOOM

BOOM			W Boom Point Height	WITH OUTRIGGERS Side or Rear	ON TIRES		BOOM			W Boom Point Height	WITH OUTRIGGERS Side or Rear	ON TIRES		
Length	Radius	Angle			Side	Rear	Length	Radius	Angle			Side	Rear	
40'	12'	79°	44' 5"	70,000*	30,240*	47,430	110' ②	25'	79°	112' 10"	30,910*	9,780	16,360	
	15'	74°	43' 9"	57,000*	27,570	34,940		30'	76°	112' 2"	24,610*	7,260	12,590	
	20'	67°	41' 11"	43,400*	15,380	23,930		40'	71°	109' 3"	17,930	4,240	8,110	
	25'	56°	39' 4"	33,500*	11,360	17,920		50'	65°	105' 3"	12,650	2,490	5,530	
	30'	50°	35' 9"	27,200*	8,820	14,140		60'	60°	100' 0"	9,430	1,360	3,860	
	35'	39°	30' 7"	22,700*	7,060	11,530		70'	53°	93' 4"	7,230	560	2,680	
	40'	26°	22' 10"	19,210	5,780	9,640		80'	46°	84' 10"	5,660	-----	1,820	
50'	12'	81°	54' 7"	68,700*	29,870*	47,190	120' ②	25'	80°	123' 5"	30,540*	9,560	16,140	
	15'	77°	54' 0"	56,530*	22,430	34,710		30'	78°	122' 5"	24,240*	7,030	12,370	
	20'	71°	52' 8"	43,020*	15,150	23,700		40'	73°	119' 9"	17,750	4,020	7,890	
	25'	65°	50' 8"	33,130*	11,140	17,700		50'	68°	116' 1"	12,460	2,280	5,310	
	30'	59°	48' 0"	26,830*	8,590	13,910		60'	62°	111' 5"	9,220	1,140	3,640	
	35'	52°	44' 6"	22,350*	6,840	11,310		70'	57°	105' 6"	7,040	350	2,470	
	40'	44°	40' 0"	19,030	5,560	9,420		80'	51°	98' 2"	5,460	-----	1,600	
60'	15'	80°	64' 3"	56,060*	22,200	34,480	130' ②	90'	44°	89' 0"	4,280	-----	930	
	20'	75°	63' 1"	42,460*	14,920	23,480		100'	37°	77' 4"	3,350	-----	400	
	25'	70°	61' 6"	32,760*	10,910	17,470		110'	28°	61' 8"	2,600	-----	-----	
	30'	64°	59' 4"	26,460*	8,370	13,690		120'	15°	36' 3"	1,990	-----	-----	
	35'	59°	56' 8"	22,000*	6,620	11,090		140' ②	25'	81°	133' 7"	30,170*	9,330	15,910
	40'	53°	53' 4"	18,850	5,340	9,200			30'	79°	132' 7"	23,870*	6,810	12,150
	50'	40°	43' 11"	13,600	3,590	6,620			40'	74°	130' 2"	17,570	3,800	7,670
60'	21°	27' 0"	10,390	2,450	4,940	50'	69°		126' 11"	12,270	2,060	5,090		
70'	15'	81°	74' 4"	55,590*	21,960	34,250	130' ②	60'	65°	122' 7"	9,030	930	3,420	
	20'	77°	73' 5"	42,260*	14,690	23,250		70'	60°	117' 4"	6,840	130	2,250	
	25'	73°	72' 1"	32,390*	10,690	17,250		80'	54°	110' 9"	5,260	-----	1,390	
	30'	68°	70' 3"	26,090*	8,150	13,470		90'	49°	102' 10"	4,070	-----	720	
	35'	64°	68' 1"	21,650*	6,400	10,880		100'	43°	93' 0"	3,150	-----	190	
	40'	59°	65' 4"	18,660	5,120	8,980		110'	35°	80' 7"	2,400	-----	-----	
	50'	49°	58' 1"	13,410	3,370	6,400		120'	27°	64' 1"	1,790	-----	-----	
80'	20'	79°	83' 8"	41,880*	14,460	23,020	140' ②	130'	14°	37' 7"	1,280	-----	-----	
	25'	75°	82' 6"	32,020*	10,460	17,030		30'	79°	142' 10"	23,500*	6,590	11,930	
	30'	71°	80' 11"	25,720*	7,930	13,250		40'	75°	140' 7"	17,380	3,580	7,450	
	35'	67°	79' 0"	21,300*	6,180	10,660		50'	71°	137' 6"	12,080	1,840	4,880	
	40'	63°	76' 9"	18,480	4,900	8,760		60'	67°	133' 7"	8,830	710	3,210	
	50'	55°	70' 9"	13,220	3,150	6,180		70'	62°	128' 9"	6,640	-----	2,040	
	60'	46°	62' 6"	10,000	2,010	4,510		80'	57°	123' 9"	5,060	-----	1,170	
90'	20'	80°	93' 10"	41,500*	14,230	22,800	140' ②	90'	52°	115' 9"	3,870	-----	500	
	25'	77°	92' 9"	31,650*	10,240	16,800		100'	47°	107' 3"	2,940	-----	-----	
	30'	73°	91' 5"	25,350*	7,700	13,030		110'	41°	96' 9"	2,200	-----	-----	
	35'	70°	89' 9"	20,950*	5,960	10,440		120'	34°	83' 9"	1,580	-----	-----	
	40'	67°	87' 9"	18,300	4,680	8,540		130'	26°	66' 5"	1,070	-----	-----	
	50'	59°	82' 8"	13,030	2,930	5,960		140'	14°	38' 10"	640	-----	-----	
	60'	52°	75' 9"	9,800	1,790	4,290		150' ② ④	30'	80°	153' 0"	23,130*	6,370	11,700
70'	43°	66' 6"	7,630	1,000	3,120	40'	76°		150' 11"	17,200	3,360	7,230		
80'	33°	53' 7"	6,060	410	2,250	50'	72°		148' 1"	11,890	1,620	4,660		
90'	17°	32' 0"	4,880	-----	1,580	60'	68°		144' 5"	8,640	490	2,990		
100'	20'	81°	104' 0"	41,120*	14,000	22,570	150' ② ④	70'	64°	140' 0"	6,440	-----	1,820	
	25'	78°	103' 0"	31,280*	10,010	16,580		80'	60°	134' 7"	4,870	-----	960	
	30'	75°	101' 10"	24,980*	7,480	12,810		90'	55°	128' 3"	3,670	-----	290	
	35'	72°	100' 4"	20,600*	5,730	10,220		100'	50°	120' 7"	2,740	-----	-----	
	40'	69°	98' 7"	18,110	4,460	8,320		110'	45°	111' 5"	1,990	-----	-----	
	50'	63°	94' 1"	12,840	2,710	5,750		120'	39°	100' 5"	1,380	-----	-----	
	60'	56°	88' 2"	9,610	1,580	4,070		130'	33°	86' 9"	870	-----	-----	
70'	49°	80' 5"	7,430	780	2,900	140'	25°	68' 8"	430	-----	-----			
80'	41°	70' 4"	5,860	190	2,030									
100'	16°	33' 6"	3,750	-----	830									

① Lifting capacities shown are in pounds and are not more than 85% of minimum tipping loads with machine standing on firm level ground. A deduction must be made from the above lifting capacities for weight of hookblock, hook, sling, grapple, etc.

\* Indicates these lifting capacities are based upon strength of material. See Note ① regarding all other lifting capacities.

② Lifting crane service only for all boom lengths over 60 feet.

NOTE: Six part hoist line 3/4" cable required for maximum lifts.

③ For normal dragline, clamshell, lifting magnet or similar work, weight of bucket or magnet plus load should not exceed capacities shown in dragline or clamshell chart with machine standing on firm level ground. These are maximum values and allowance must be made for soft or uneven footing, bucket suction and other unfavorable conditions. Boom length for average dragline, clamshell, magnet or similar work should not exceed 60 feet.

‡ Dragline operation with boom angle less than 35° is seldom advisable.

④ For tubular boom lengths greater than 130', the "Hi-Lite" boom gantry with mid-point suspension cables is required in conjunction with the standard heavy duty retractable high gantry. The "Hi-Lite" boom gantry can also be purchased as optional extra with all tubular boom lengths under 130'. (Reference to boom lengths is for main boom—Use of optional 20', 30', 40' and 50' Jibs with these boom lengths will not affect these recommendations.)

GENERAL INFORMATION ONLY