


## Electric battery operated Arm Lift Mobile Crane Max. Capacity **Kg. 5.000**



|  |               |
|---|---------------|
| OUTREACH (mm)   | CAPACITY (kg) |
| 2.000   | <b>2.700</b>  |
| 3.000   | <b>1.600</b>  |
| 5.000   | <b>800</b>    |

### TECHNICAL DATA

**CRANE FRAME:** Five-wheel frame fabricated from preformed and welded steel plate with built-in counterweight .

**TRACTION:** by DC 7 kw 48V reversible electric motor, controlled by inverter, electro magnetic control on disk brake.

**BATTERY:** 48V 575Ah battery, battery meter on dashboard.

**BRAKES:** hydraulically controlled foot operating brake. Lever mechanically controlled parking brake.

**DRIVE:** by 180° steering helm. Complete with safety device on backward.

**WHEELS:** Nr. 1 rear pneumatic 250/60 R12 Nr. 4 front superelastic 16 x 7 R8"

**BOOM:** boom fabricated from preformed and welded quality steel plate. Nr.4 telescoping sections: 1 fixed; 2 hydraulically telescoping and 1 manually telescoping. Fitted with nylon wear pads adjustable wear pads on the sides.

**BOOM CONTROL:** Distributor by proportional levers. Motor driven pump 5kW 24V.

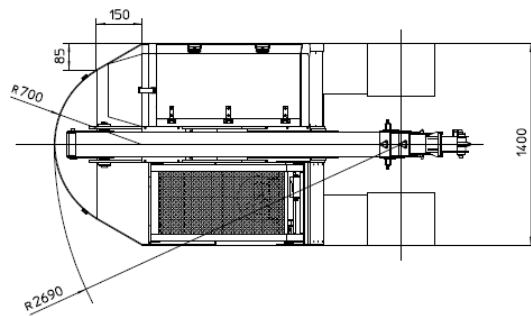
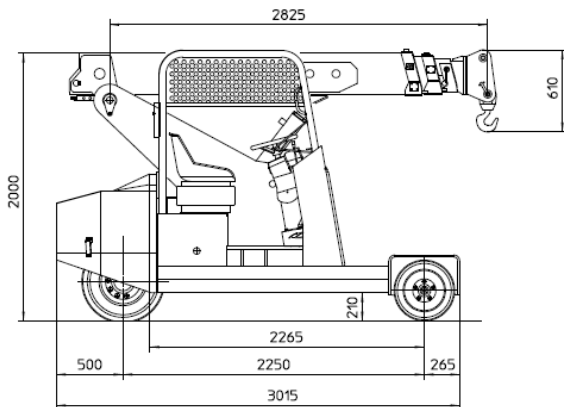
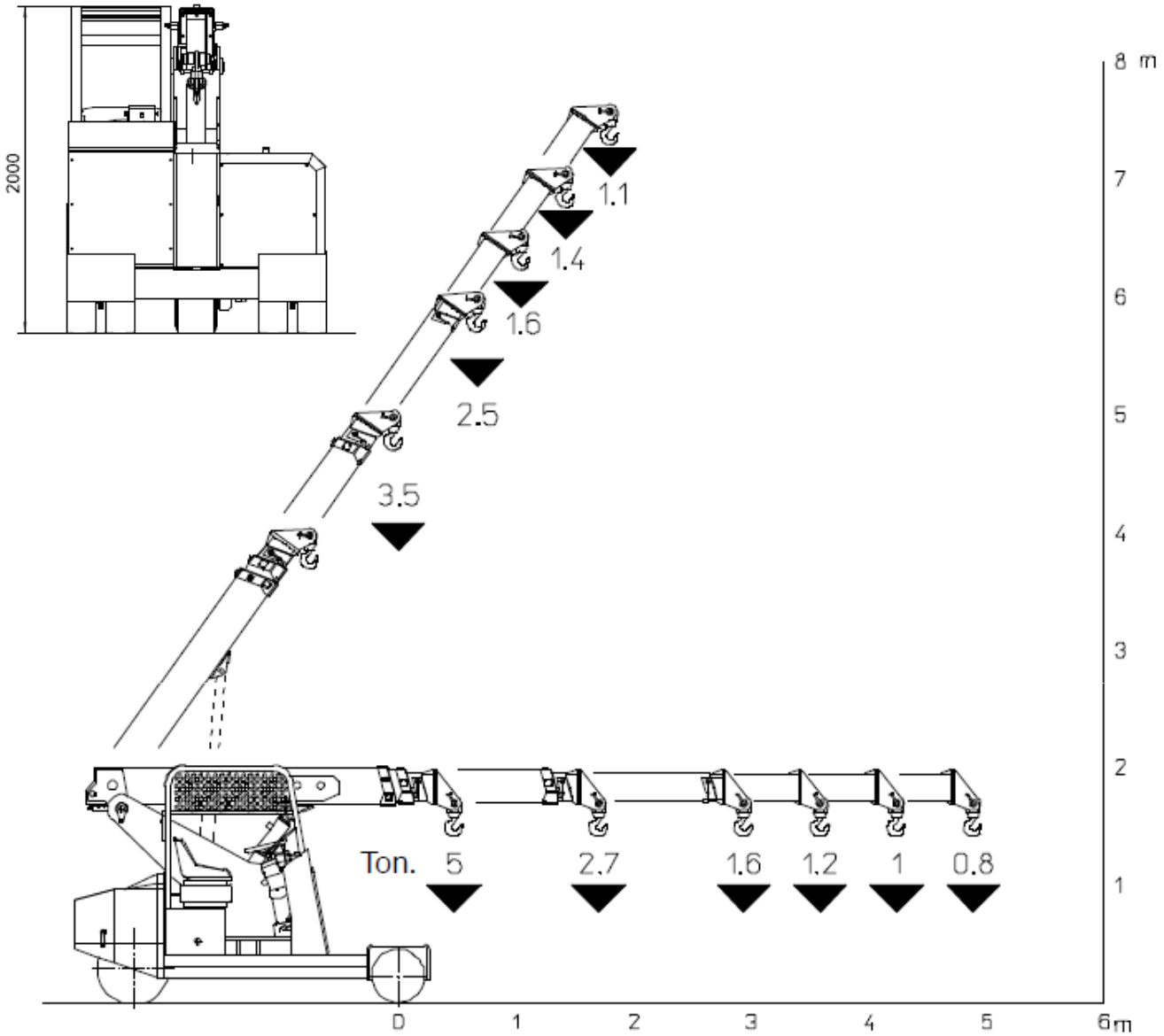
**LMI:** Electronic Load Moment Indicator. Display showing lifted load, max allowed load, tilting percentage, operating radius, angle, telescope and light indicators on the operative mode.

**TOTAL WEIGHT:** approx. kg. 5.500 **MAX. CAPACITY:** kg. 5.000

**Options on request:** hydraulic winch; chain hoists; carry-deck; battery charger (on board and stand-alone); manual and hydraulic jibs; cable remote control; radio remote control; working light; fire extinguisher; fully hydraulic boom.



The VALLA mobile crane mod. 50 E complies with the following standards:  
 -2006/42/CE  
 -UNIEN13000  
 -I.S.P.E.S.L.



mm.

Data subject to be changed without any previous notice. Pictures may differ from technical description.