

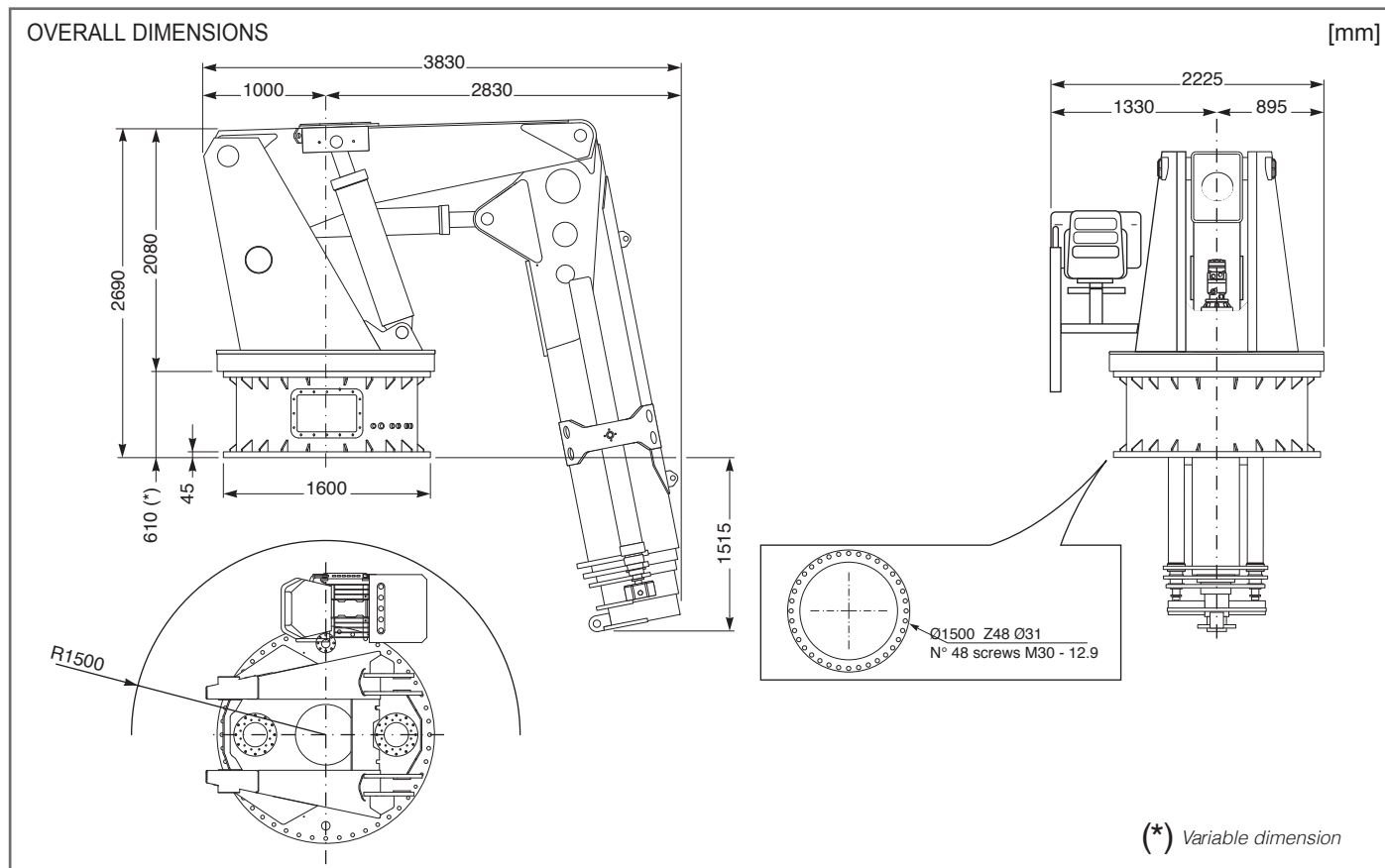


Custom Built Marine & Offshore Cranes

KNUCKLE TELESCOPIC CRANE

HLRM 170-4S MODEL

TECHNICAL SPECIFICATION



TECHNICAL DATA					
Hydraulic extensions	N°	4	Empty weight of the crane	kg	9000
Net lifting moment	t-m	170	Recommended amount of oil	lt	600
Slewing torque	kg-m	16000	Slewing speed	rpm	1
Slewing angle (continuous)	°	360	Main boom lifting time	sec	50
Pump capacity	lt/min	70+70	Secondary boom articulation time	sec	50
Max working pressure	bar	290	Boom element extension time	sec	115
STANDARD FEATURES			AVAILABLE OPTIONS		
Slewing continuous			5000 kg direct pull winch rope Ø 18 L= 70 m		
Proportional distributor			Winch limit switch		
Load limiting device			Slewing limit switch (450°)		
			Cabin with windows and wipers		
			Size 10 electrohydraulic power pack (HP 100)		
			Control panel out of the crane		

October 2014

HLRM170-3S Rev.00

The technical data contained in this card are only indicative and can be changed without notice.

HEILA CRANES S.p.A. | Via Romana 34/6 - 42028 Poviglio (RE) Italy | info@heila.com | www.heila.com

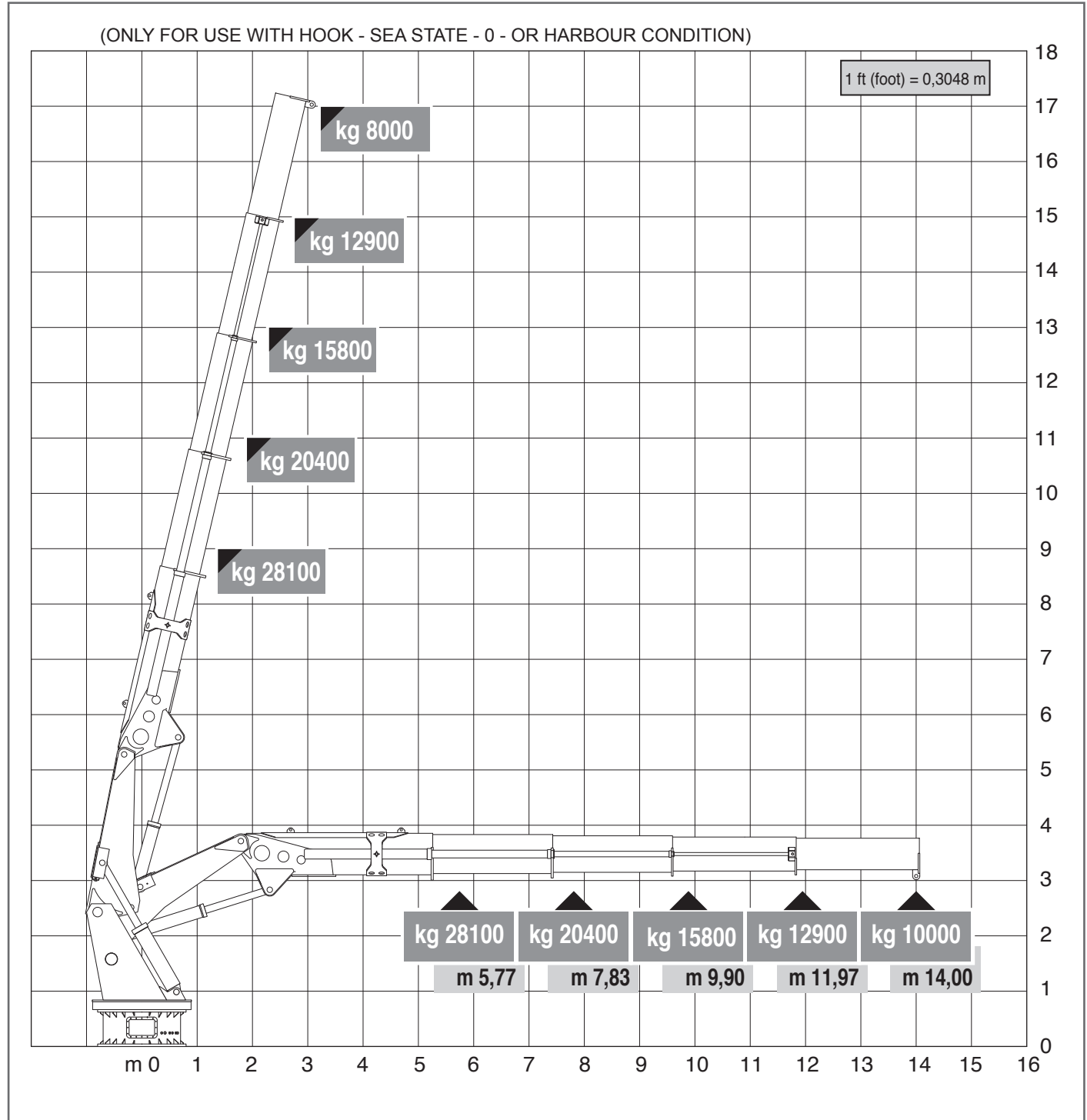


Custom Built Marine & Offshore Cranes

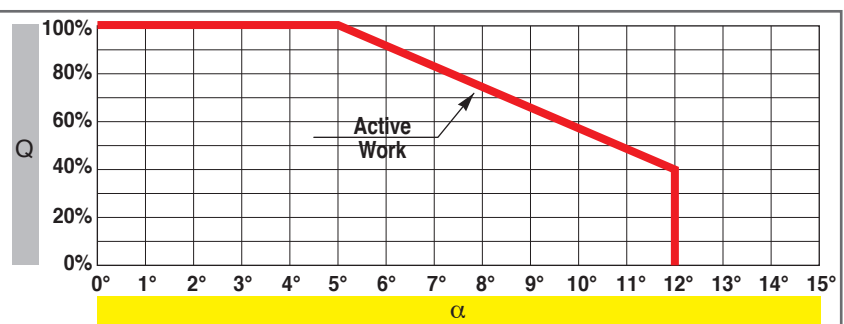
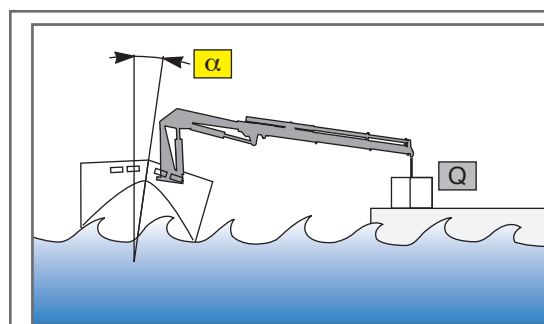
KNUCKLE TELESCOPIC CRANE

HLRM 170-4S MODEL

TECHNICAL SPECIFICATION



October 2014



The technical data contained in this card are only indicative and can be changed without notice.

HLRM170-3S Rev.00