

MATERIAL HANDLING CRANES PW-SERIES



PALFINGER

LIFETIME EXCELLENCE

HOME

OVERVIEW

FEATURES

SERVICE

ABOUT US

MAT
PW-S



THE PERFECT MATCH FOR DELIVERY OF BUILDING MATERIALS

The innovative GT-Series of Truck-Mounted Forklifts offers a center seated design with a powerful anti-stall hydraulic drive system, leading capacity to weight ratio, excellent ground clearance, and outstanding all-round operator visibility.

A reliable partner when it comes to material handling jobs.

PALFINGER

LIFETIME EXCELLENCE



ONE PARTNER FOR YOUR NEEDS



PALFINGER FORKLIFT - EASILY DELIVERS BUILDING MATERIALS THROUGH THE MOST RUGGED TERRAINS WITH ITS DURABLE CLEAR VIEW MAST AND CONICAL DESIGN

→ SHOW MORE

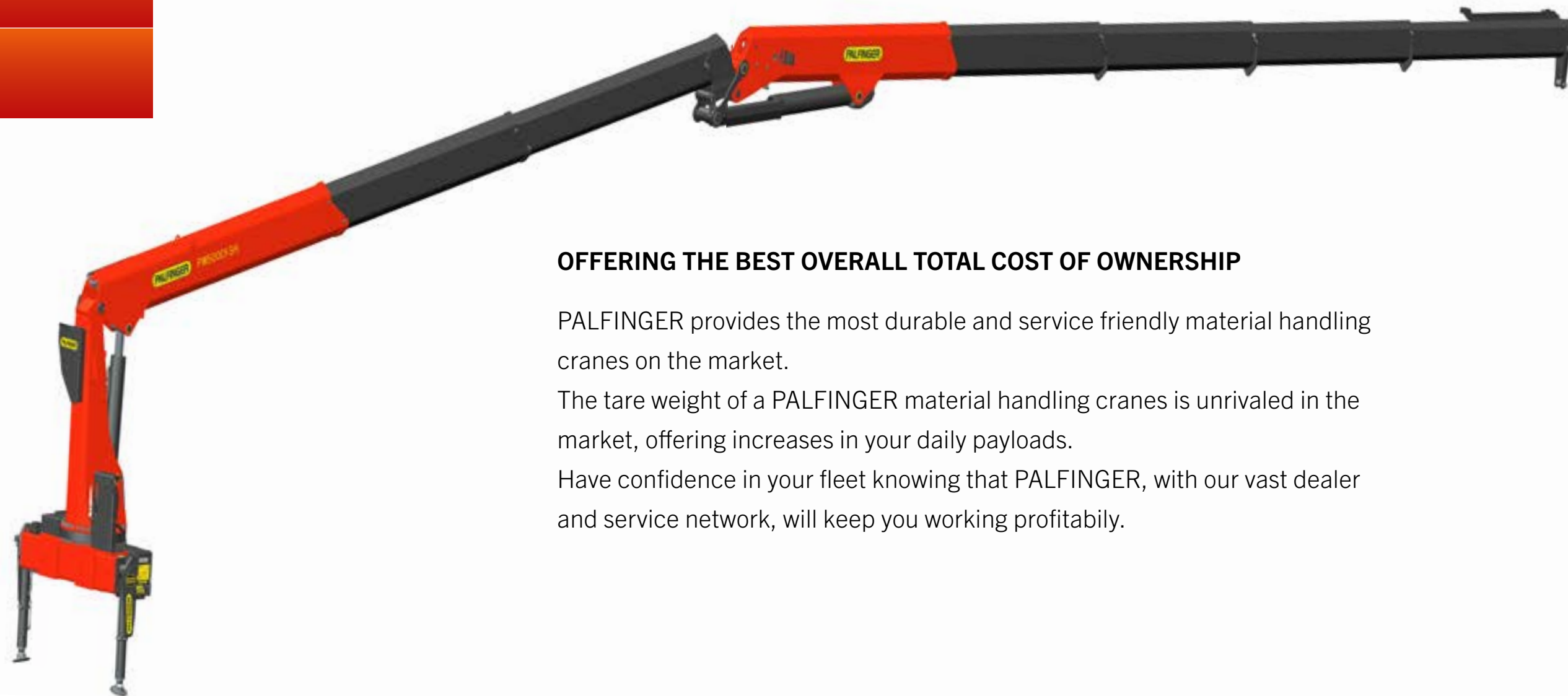
MATERIAL HANDLING CRANES PW-SERIES



GENERAL

TECHNICAL DATA

APPLICATIONS



OFFERING THE BEST OVERALL TOTAL COST OF OWNERSHIP

PALFINGER provides the most durable and service friendly material handling cranes on the market.

The tare weight of a PALFINGER material handling cranes is unrivaled in the market, offering increases in your daily payloads.

Have confidence in your fleet knowing that PALFINGER, with our vast dealer and service network, will keep you working profitably.

MATERIAL HANDLING CRANES

PW-SERIES



| GENERAL | | TECHNICAL DATA | | | APPLICATIONS | | | |
|---------------|------------------------------|--------------------------------|---------------|-------------------|----------------------------------|-----------------------|---------------------|--------------------------------|
| MODEL | MAX. LIFTING MOMENT (FT.IBS) | GROSS ROTATION TORQUE (FT.IBS) | SLEWING RANGE | STABILIZER SPREAD | WEIGHT (FL, R3X, STZS3, 4) (IBS) | MAX. HORIZONTAL REACH | MAX. VERTICAL REACH | MAX. HORIZONTAL CAPACITY (IBS) |
| PW 32001 A | 194,850 | 42,700 | 470° | 22' 5" | 6,742 | 43' | 55'6" | 4,450 @ 42' |
| PW 32001 B | 174,270 | 42,700 | 470° | 22' 5" | 7,716 | 52'8" | 64'8" | 2,950 @ 52' |
| PW 32001 C | 159,890 | 42,700 | 470° | 22' 5" | 8,440 | 61' | 73'2" | 2,050 @ 61' |
| PW 35001-SH A | 218,230 | 42,700 | 470° | 22' 5" | 6,742 | 43' | 55'6" | 5,000 @ 42' |
| PW 35001-SH B | 197,650 | 42,700 | 470° | 22' 5" | 7,716 | 52'8" | 64'8" | 3,400 @ 52' |
| PW 35001-SH C | 183,270 | 42,700 | 470° | 22' 5" | 8,440 | 61' | 73'2" | 2,450 @ 61' |
| PW 38001 B | 227,180 | 51,330 | 470° | 25' 1" | 8,550 | 52'9" | 64'8" | 3,950 @ 52' |
| PW 38001 C | 231,430 | 51,330 | 470° | 25' 1" | 9,240 | 61' | 73'2" | 2,900 @ 61' |
| PW 42001-SH B | 256,110 | 51,330 | 470° | 25' 1" | 8,770 | 52'9" | 64'8" | 4,500 @ 52' |
| PW 42001-SH C | 241,640 | 51,330 | 470° | 25' 1" | 9,480 | 61' | 73'2" | 3,350 @ 61' |
| PW 50001-SH C | 253,220 | 51,330 | 470° | 25' 1" | 11,710 | 80'9" | 93' | 1,780 @ 76' |

MATERIAL HANDLING CRANES PW-SERIES



GENERAL

ENGINEERING SERVICE

MODEL

PW 32001 A

PW 32001 B

PW 32001 C

PW 35001-SH

PW 35001-SH

PW 35001-SH

PW 38001 B

PW 38001 C

PW 42001-SH

PW 42001-SH

PW 50001-SH

MAX. HORIZONTAL
CAPACITY (IBS)

4,450 @ 42'

2,950 @ 52'

2,050 @ 61'

5,000 @ 42'

3,400 @ 52'

2,450 @ 61'

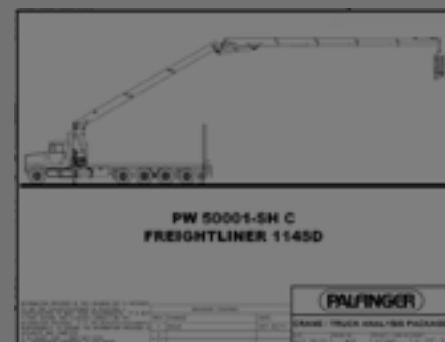
3,950 @ 52'

2,900 @ 61'

4,500 @ 52'

3,350 @ 61'

1,780 @ 76'



→ ENGINEERING SERVICES

Dealer installations are carried out through PALFINGER engineering services to ensure optimum layout, weight distribution and stability.

STABILITY ANALYSIS

DRAWING SHOWS THE STABILITY OF THE FINISHED TRUCK

WEIGHT DISTRIBUTION

FRONT

THE CURB WEIGHT
A 225

14,470 LBS

THE MAXIMUM PAYLOAD ON CURB

5,084 LBS

THE GROSS WEIGHT

19,554 LBS

COMMENTS:
TAG AXLE MUST BE ON PAYLOAD BASED ON F

WEIGHT DISTR. OVERALL WEIGHTS SHOWN ARE INDICATED FROM (1) LOAD EQUALIZING ABILITY OF TANDUM HORIZONTAL AXLES PART OF A TANDUM/DRIVE OR (2) LIFT AXLE PERFORMANCE, DEPENDING TRANSPORT THE FULL AMOUNT OF WEIGHT

FINAL LAYOUT

THIS IS THE STREET-SIDE VIEW OF THE FINISHED UNIT. HEIGHTS AND GROUND CLEARANCES, WHEN SHOWN, ARE

59 BOC

83 BOC

CRANE:
CRANE OUTRIGGERS:
CRANE STABILIZERS:
AUX. OUTRIGGER-STAB:
2ND AUX. OUTR-STAB:
CONTROLS:
SUBFRAME:

NOTE THIS IS NOT VALUES NECESSARY

*IF THE TARE WEIGHTS SHOULD BE OR BY SCALING TH

TRUCK SPECIFICATION

THIS IS THE TRUCK INFORMATION USED IN THE FINAL LAYOUT, WEIGHT DISTRIBUTION, AND STABILITY ANALYSIS FOR THIS PROJECT IF THE TRUCK IS AN EXTEND FRAME RAIL YET OR IF IT IS ST

**PW 50001-SH C
FREIGHTLINER 114SD**

| REVISION CONTROL | | DATE |
|------------------|-------|-----------|
| 1 | ISSUE | OCT 20/11 |
| 2 | | |
| 3 | | |

CRANE / TRUCK ANALYSIS PACKAGE

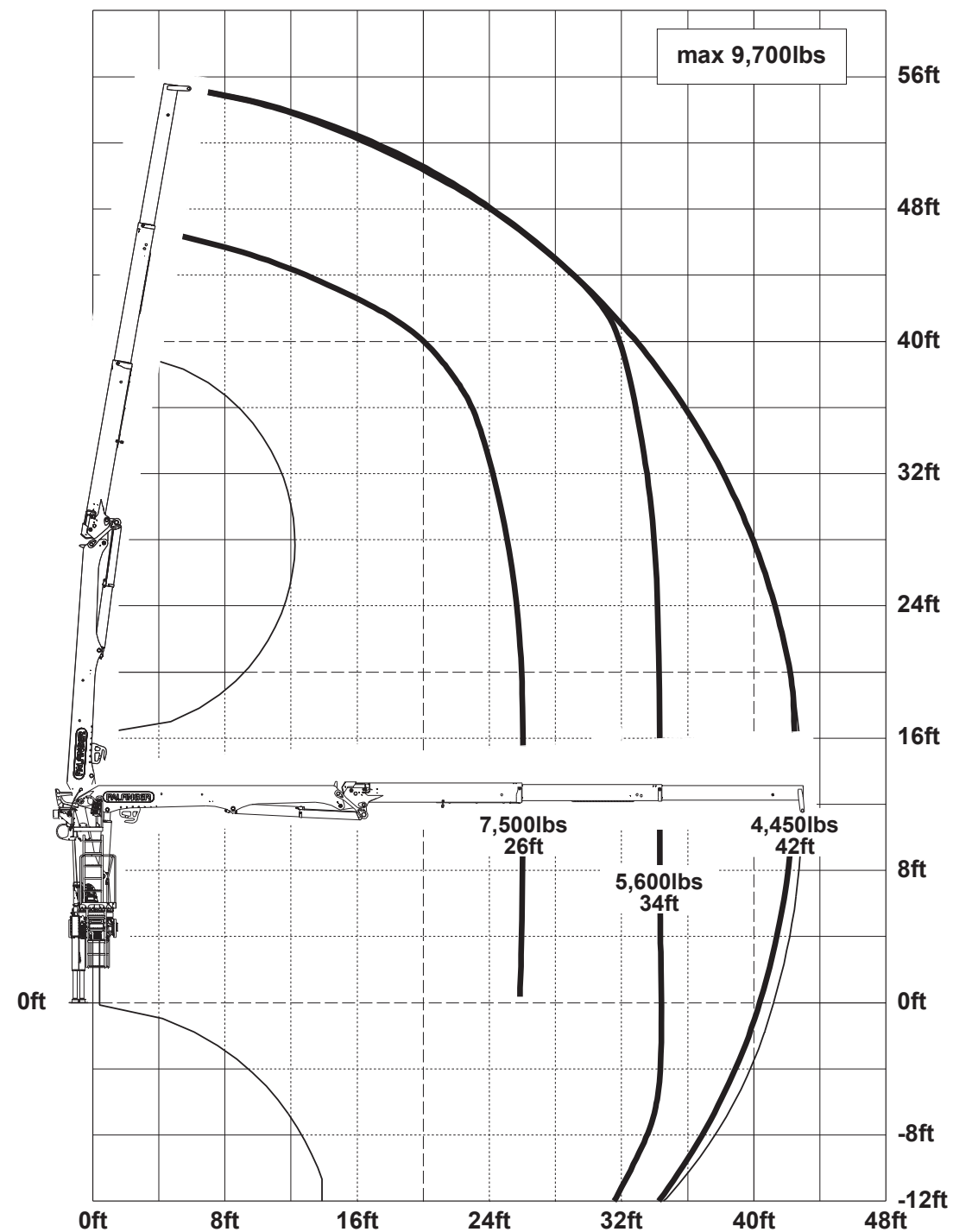
DATE: OCT 20/11 DRAWN BY: M.P. PROJECT: 6739C 1 OF 5

MATERIAL PW-SERIES

PW 32001 A

GENERAL

| MODEL | MAX. LIFTING MOMENT (FT.IBS) |
|---------------|------------------------------|
| PW 32001 A | 194,850 |
| PW 32001 B | 174,270 |
| PW 32001 C | 159,890 |
| PW 35001-SH A | 218,230 |
| PW 35001-SH B | 197,650 |
| PW 35001-SH C | 183,270 |
| PW 38001 B | 227,180 |
| PW 38001 C | 231,430 |
| PW 42001-SH B | 256,110 |
| PW 42001-SH C | 241,640 |
| PW 50001-SH C | 253,220 |



→ ENGINEERING SERVICES

Dealer installations are carried out through PALFINGER engineering services to ensure optimum layout, weight distribution and stability.



MAX. HORIZONTAL CAPACITY (IBS)

| |
|-------------|
| 4,450 @ 42' |
| 2,950 @ 52' |
| 2,050 @ 61' |
| 5,000 @ 42' |
| 3,400 @ 52' |
| 2,450 @ 61' |
| 3,950 @ 52' |
| 2,900 @ 61' |
| 4,500 @ 52' |
| 3,350 @ 61' |
| 1,780 @ 76' |

MATERIAL PW-SERIES

PW 32001 B

GENERAL

| MODEL | MAX. LIFTING MOMENT (FT.IBS) |
|-------|---------------------------------|
|-------|---------------------------------|

| | |
|------------|---------|
| PW 32001 A | 194,850 |
|------------|---------|

| | |
|------------|---------|
| PW 32001 B | 174,270 |
|------------|---------|

| | |
|------------|---------|
| PW 32001 C | 159,890 |
|------------|---------|

| | |
|---------------|---------|
| PW 35001-SH A | 218,230 |
|---------------|---------|

| | |
|---------------|---------|
| PW 35001-SH B | 197,650 |
|---------------|---------|

| | |
|---------------|---------|
| PW 35001-SH C | 183,270 |
|---------------|---------|

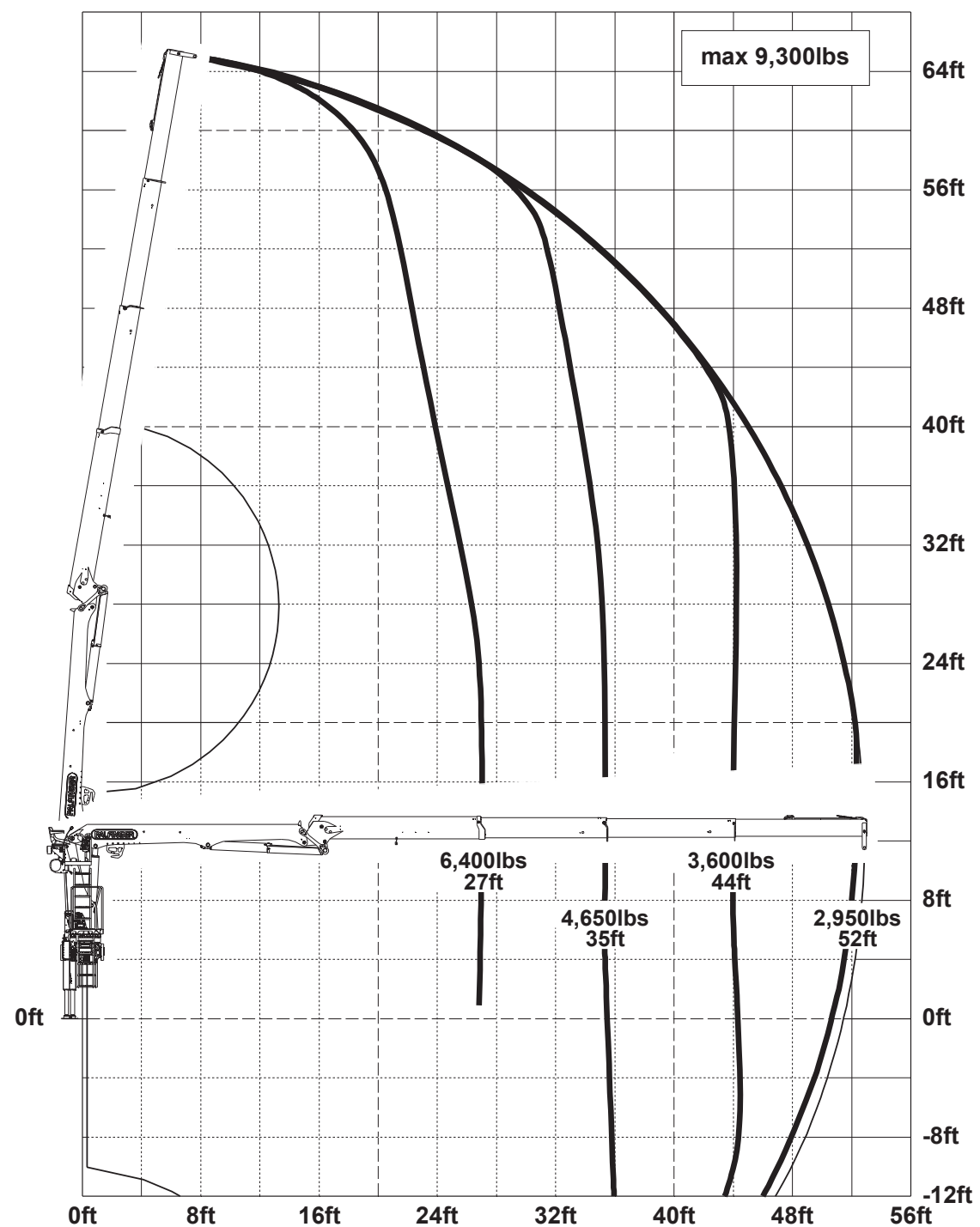
| | |
|------------|---------|
| PW 38001 B | 227,180 |
|------------|---------|

| | |
|------------|---------|
| PW 38001 C | 231,430 |
|------------|---------|

| | |
|---------------|---------|
| PW 42001-SH B | 256,110 |
|---------------|---------|

| | |
|---------------|---------|
| PW 42001-SH C | 241,640 |
|---------------|---------|

| | |
|---------------|---------|
| PW 50001-SH C | 253,220 |
|---------------|---------|



| MAX. HORIZONTAL CAPACITY (IBS) |
|-----------------------------------|
|-----------------------------------|

| |
|-------------|
| 4,450 @ 42' |
|-------------|

| |
|-------------|
| 2,950 @ 52' |
|-------------|

| |
|-------------|
| 2,050 @ 61' |
|-------------|

| |
|-------------|
| 5,000 @ 42' |
|-------------|

| |
|-------------|
| 3,400 @ 52' |
|-------------|

| |
|-------------|
| 2,450 @ 61' |
|-------------|

| |
|-------------|
| 3,950 @ 52' |
|-------------|

| |
|-------------|
| 2,900 @ 61' |
|-------------|

| |
|-------------|
| 4,500 @ 52' |
|-------------|

| |
|-------------|
| 3,350 @ 61' |
|-------------|

| |
|-------------|
| 1,780 @ 76' |
|-------------|



→ ENGINEERING SERVICES

Dealer installations are carried out through PALFINGER engineering services to ensure optimum layout, weight distribution and stability.

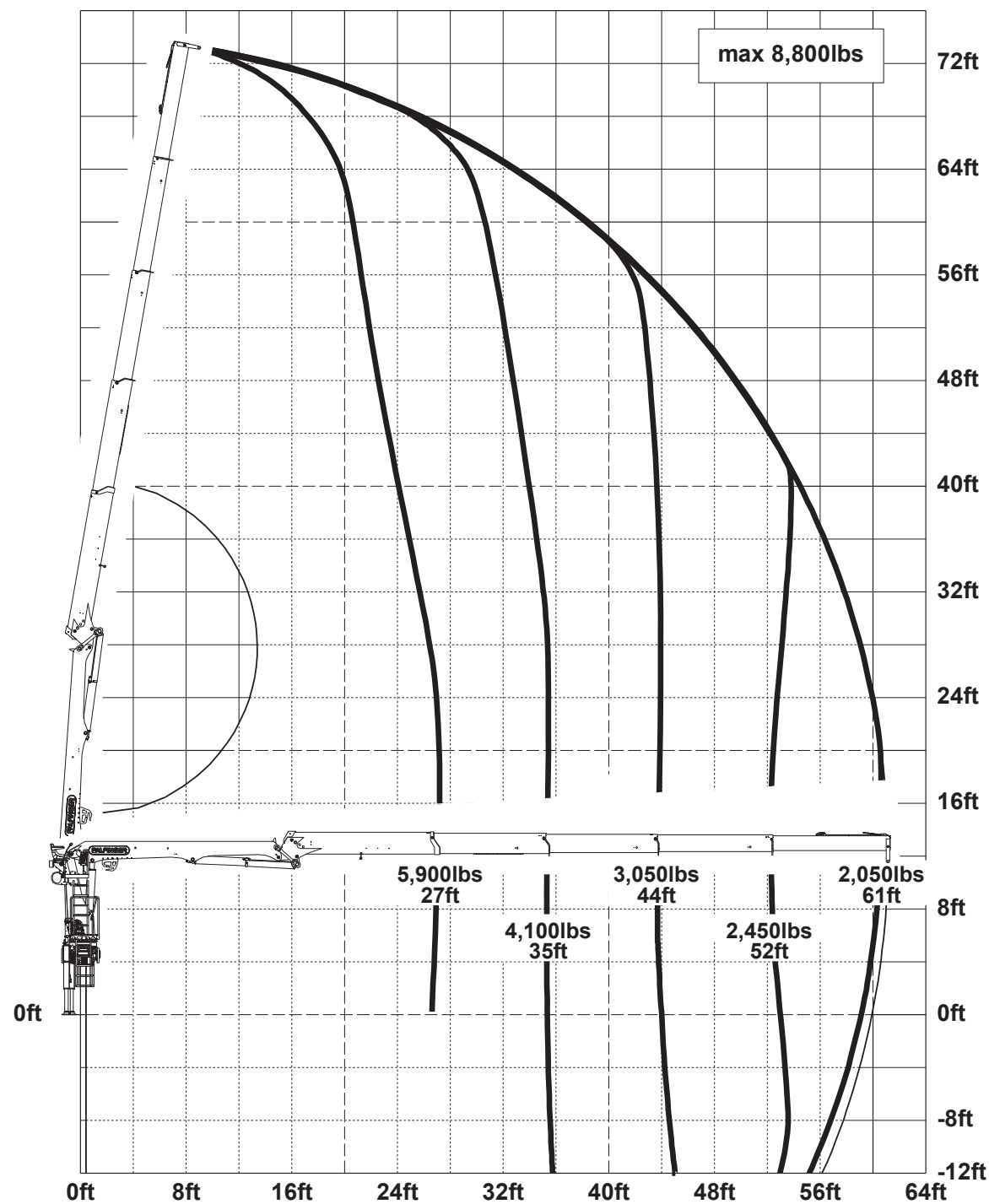


MATERIAL PW-SERIES

PW 32001 C

GENERAL

| MODEL | MAX. LIFTING MOMENT (FT.IBS) |
|---------------|------------------------------|
| PW 32001 A | 194,850 |
| PW 32001 B | 174,270 |
| PW 32001 C | 159,890 |
| PW 35001-SH A | 218,230 |
| PW 35001-SH B | 197,650 |
| PW 35001-SH C | 183,270 |
| PW 38001 B | 227,180 |
| PW 38001 C | 231,430 |
| PW 42001-SH B | 256,110 |
| PW 42001-SH C | 241,640 |
| PW 50001-SH C | 253,220 |



MAX. HORIZONTAL CAPACITY (IBS)

| |
|-------------|
| 4,450 @ 42' |
| 2,950 @ 52' |
| 2,050 @ 61' |
| 5,000 @ 42' |
| 3,400 @ 52' |
| 2,450 @ 61' |
| 3,950 @ 52' |
| 2,900 @ 61' |
| 4,500 @ 52' |
| 3,350 @ 61' |
| 1,780 @ 76' |



→ ENGINEERING SERVICES

Dealer installations are carried out through PALFINGER engineering services to ensure optimum layout, weight distribution and stability.



MATERIAL PW-SERIES

PW 35001-SH A

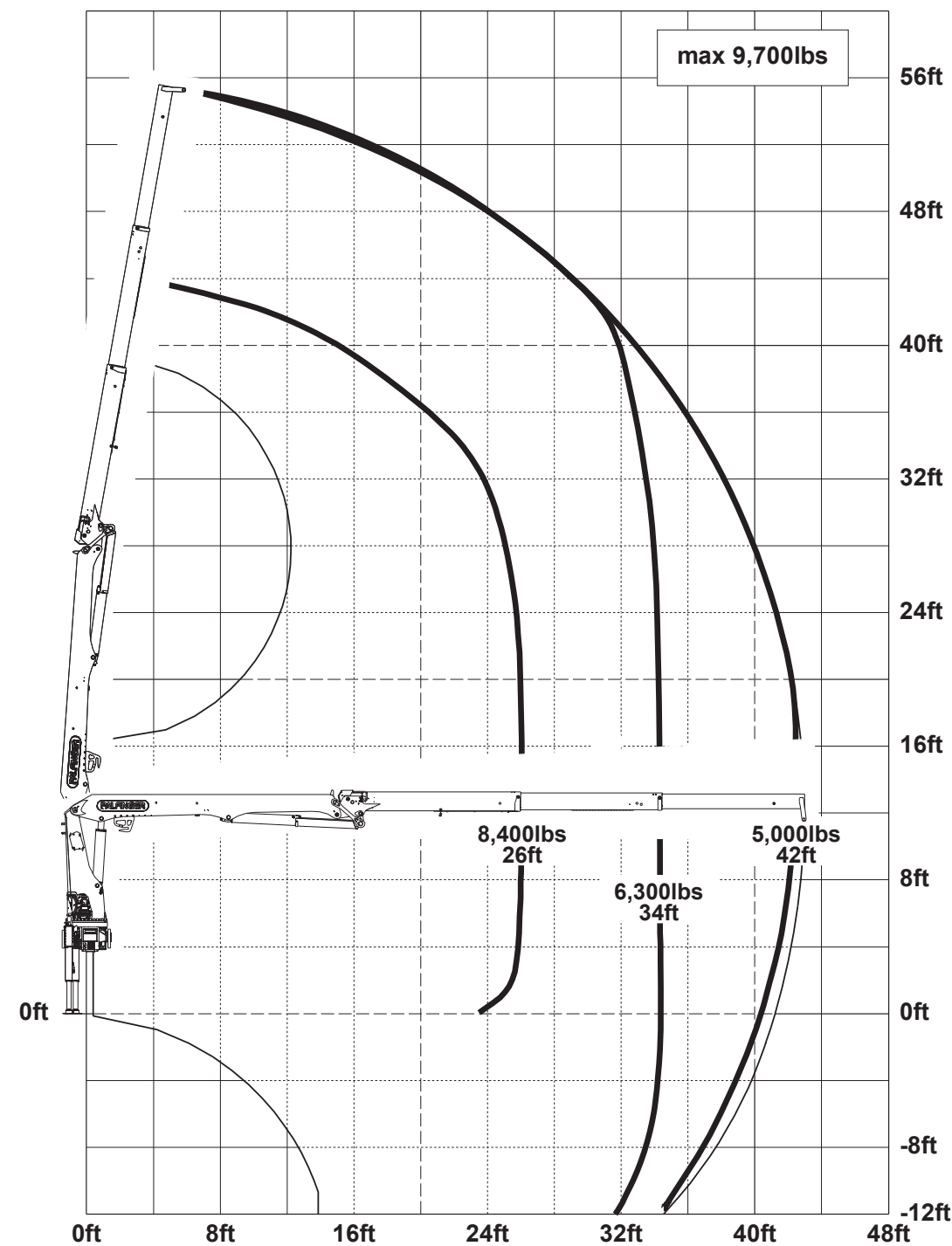
GENERAL

| MODEL | MAX. LIFTING MOMENT (FT.IBS) |
|---------------|------------------------------|
| PW 32001 A | 194,850 |
| PW 32001 B | 174,270 |
| PW 32001 C | 159,890 |
| PW 35001-SH A | 218,230 |
| PW 35001-SH B | 197,650 |
| PW 35001-SH C | 183,270 |
| PW 38001 B | 227,180 |
| PW 38001 C | 231,430 |
| PW 42001-SH B | 256,110 |
| PW 42001-SH C | 241,640 |
| PW 50001-SH C | 253,220 |



→ ENGINEERING SERVICES

Dealer installations are carried out through PALFINGER engineering services to ensure optimum layout, weight distribution and stability.



MAX. HORIZONTAL CAPACITY (IBS)

| |
|-------------|
| 4,450 @ 42' |
| 2,950 @ 52' |
| 2,050 @ 61' |
| 5,000 @ 42' |
| 3,400 @ 52' |
| 2,450 @ 61' |
| 3,950 @ 52' |
| 2,900 @ 61' |
| 4,500 @ 52' |
| 3,350 @ 61' |
| 1,780 @ 76' |

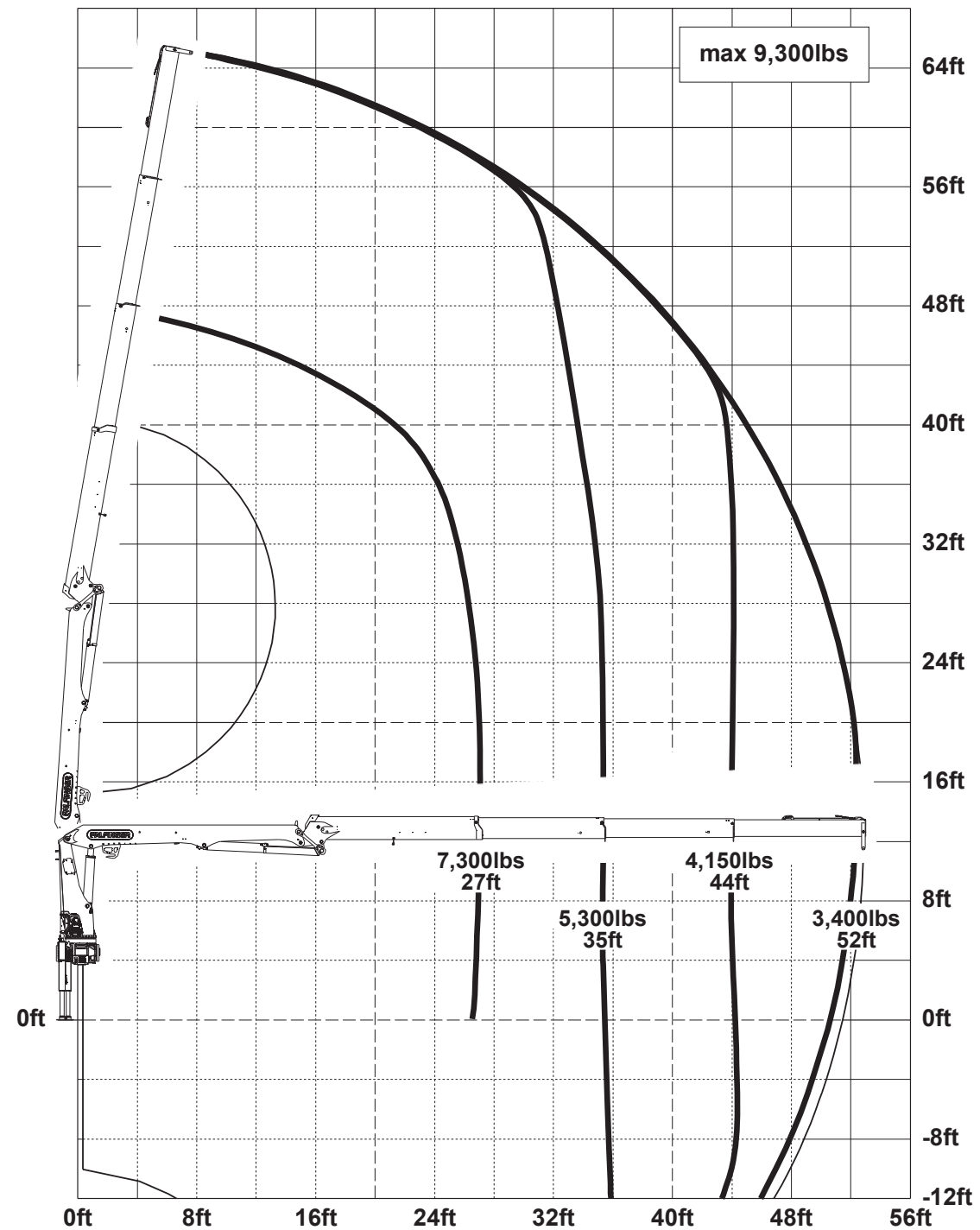


MATERIAL PW-SERIES

PW 35001-SH B

GENERAL

| MODEL | MAX. LIFTING MOMENT (FT.IBS) |
|---------------|------------------------------|
| PW 32001 A | 194,850 |
| PW 32001 B | 174,270 |
| PW 32001 C | 159,890 |
| PW 35001-SH A | 218,230 |
| PW 35001-SH B | 197,650 |
| PW 35001-SH C | 183,270 |
| PW 38001 B | 227,180 |
| PW 38001 C | 231,430 |
| PW 42001-SH B | 256,110 |
| PW 42001-SH C | 241,640 |
| PW 50001-SH C | 253,220 |



MAX. HORIZONTAL CAPACITY (IBS)

| |
|-------------|
| 4,450 @ 42' |
| 2,950 @ 52' |
| 2,050 @ 61' |
| 5,000 @ 42' |
| 3,400 @ 52' |
| 2,450 @ 61' |
| 3,950 @ 52' |
| 2,900 @ 61' |
| 4,500 @ 52' |
| 3,350 @ 61' |
| 1,780 @ 76' |



→ ENGINEERING SERVICES

Dealer installations are carried out through PALFINGER engineering services to ensure optimum layout, weight distribution and stability.

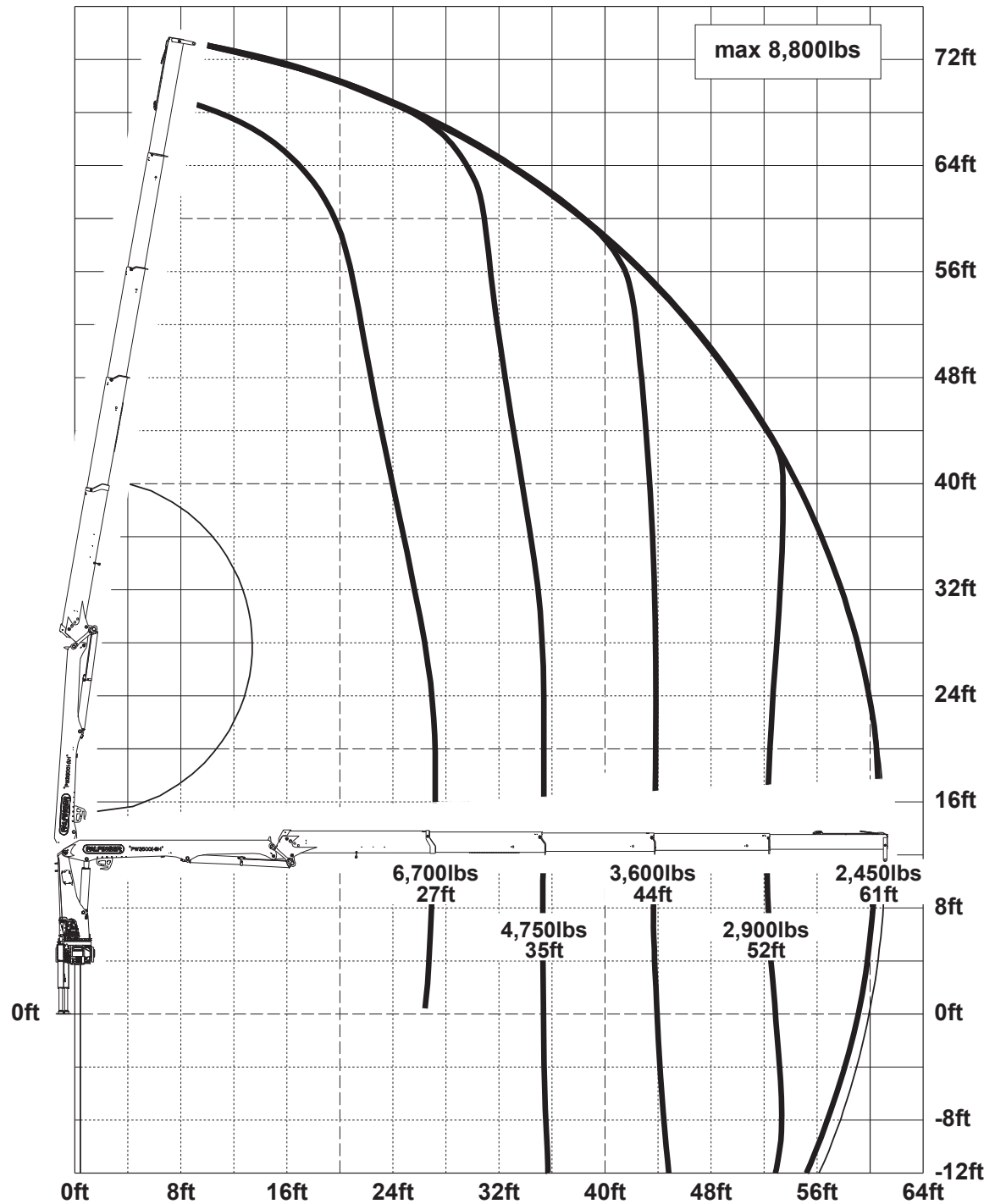


MATERIAL
PW-SERIES

PW 35001-SH C

GENERAL

| MODEL | MAX. LIFTING MOMENT (FT.IBS) |
|---------------|------------------------------|
| PW 32001 A | 194,850 |
| PW 32001 B | 174,270 |
| PW 32001 C | 159,890 |
| PW 35001-SH A | 218,230 |
| PW 35001-SH B | 197,650 |
| PW 35001-SH C | 183,270 |
| PW 38001 B | 227,180 |
| PW 38001 C | 231,430 |
| PW 42001-SH B | 256,110 |
| PW 42001-SH C | 241,640 |
| PW 50001-SH C | 253,220 |



MAX. HORIZONTAL CAPACITY (IBS)

| |
|-------------|
| 4,450 @ 42' |
| 2,950 @ 52' |
| 2,050 @ 61' |
| 5,000 @ 42' |
| 3,400 @ 52' |
| 2,450 @ 61' |
| 3,950 @ 52' |
| 2,900 @ 61' |
| 4,500 @ 52' |
| 3,350 @ 61' |
| 1,780 @ 76' |



→ ENGINEERING SERVICES

Dealer installations are carried out through PALFINGER engineering services to ensure optimum layout, weight distribution and stability.

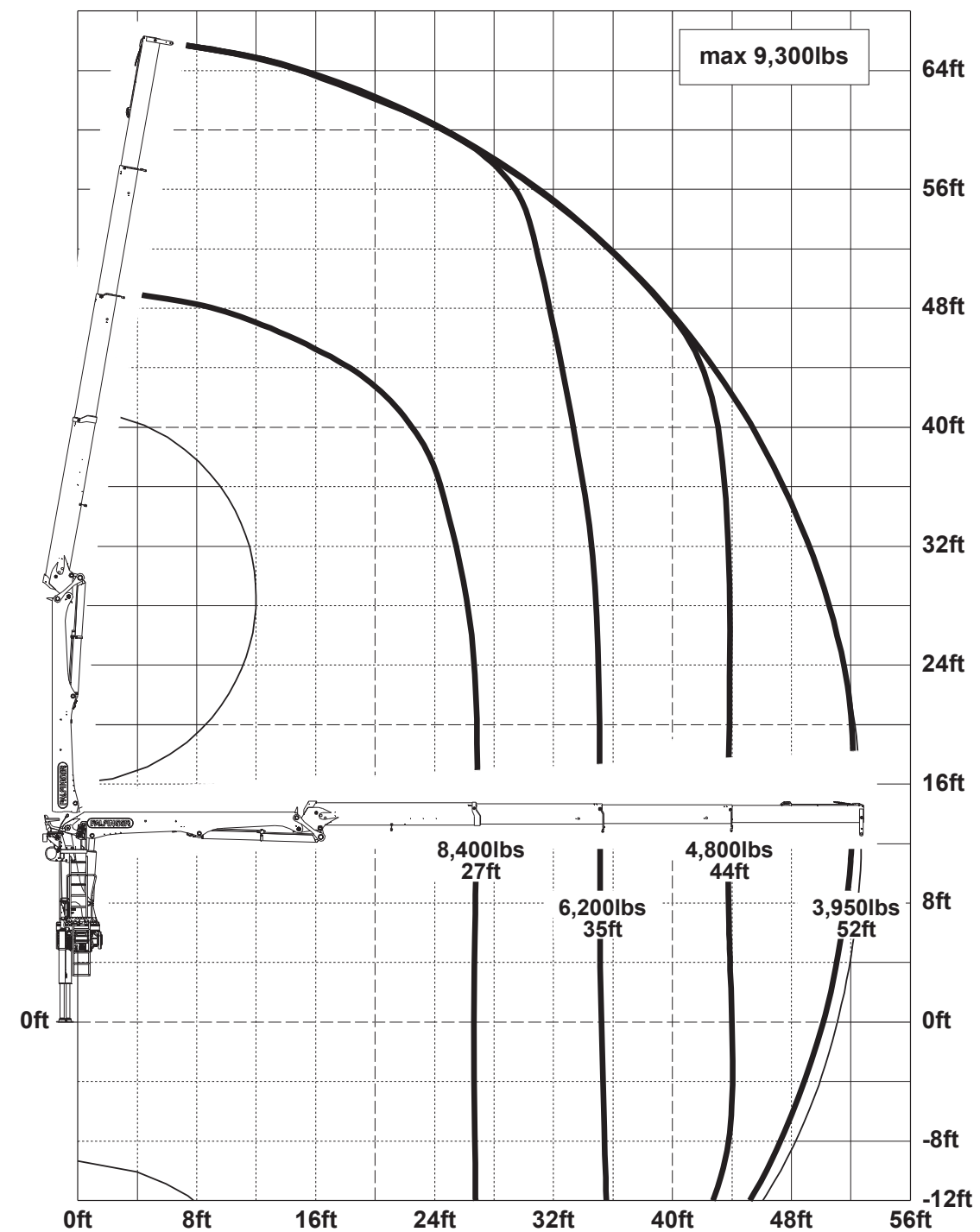


MATERIAL PW-SERIES

PW 38001 B

GENERAL

| MODEL | MAX. LIFTING MOMENT (FT.IBS) |
|---------------|------------------------------|
| PW 32001 A | 194,850 |
| PW 32001 B | 174,270 |
| PW 32001 C | 159,890 |
| PW 35001-SH A | 218,230 |
| PW 35001-SH B | 197,650 |
| PW 35001-SH C | 183,270 |
| PW 38001 B | 227,180 |
| PW 38001 C | 231,430 |
| PW 42001-SH B | 256,110 |
| PW 42001-SH C | 241,640 |
| PW 50001-SH C | 253,220 |



MAX. HORIZONTAL CAPACITY (IBS)

| |
|-------------|
| 4,450 @ 42' |
| 2,950 @ 52' |
| 2,050 @ 61' |
| 5,000 @ 42' |
| 3,400 @ 52' |
| 2,450 @ 61' |
| 3,950 @ 52' |
| 2,900 @ 61' |
| 4,500 @ 52' |
| 3,350 @ 61' |
| 1,780 @ 76' |



→ ENGINEERING SERVICES

Dealer installations are carried out through PALFINGER engineering services to ensure optimum layout, weight distribution and stability.

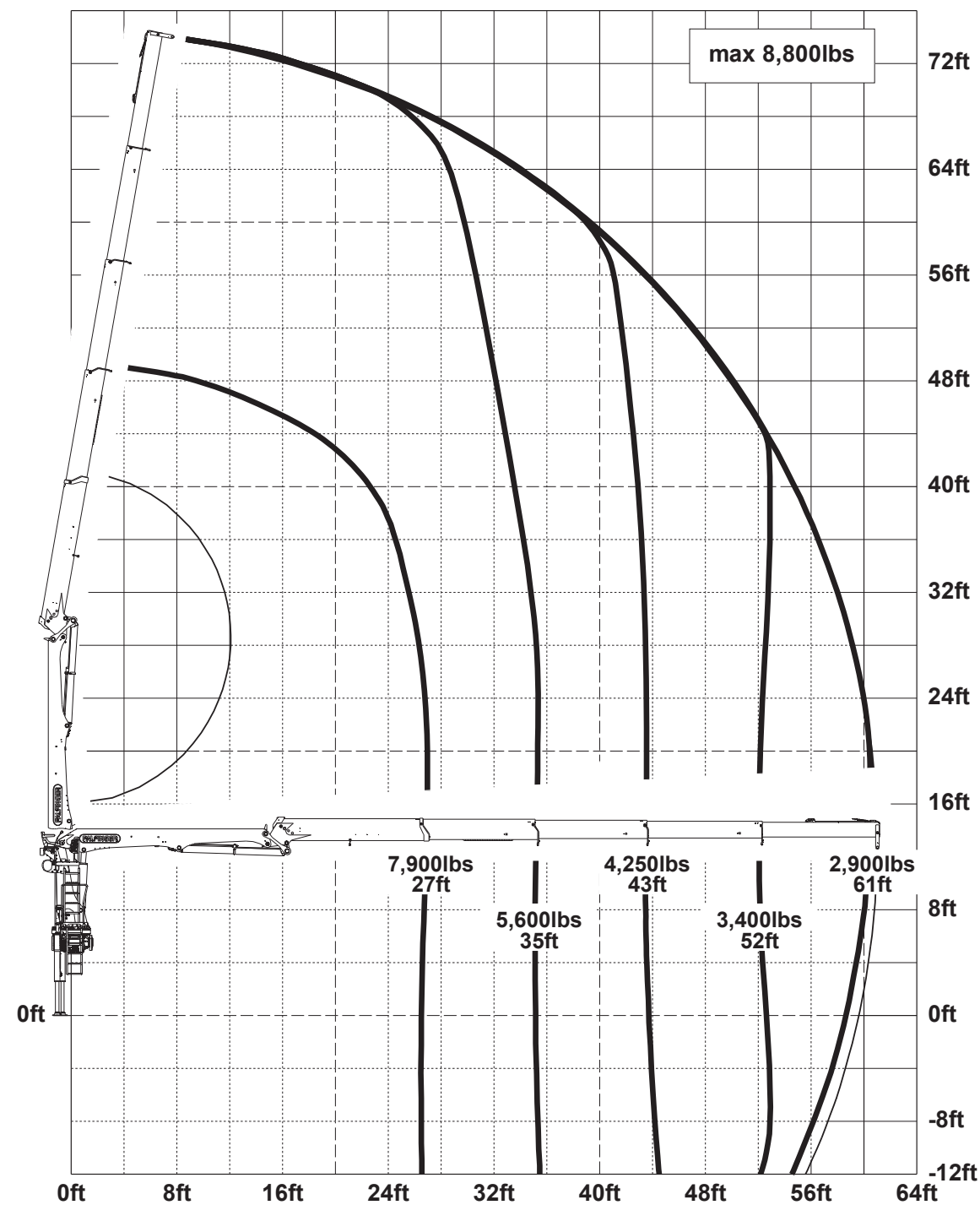


MATERIAL PW-SERIES

PW 38001 C

GENERAL

| MODEL | MAX. LIFTING MOMENT (FT.IBS) |
|---------------|------------------------------|
| PW 32001 A | 194,850 |
| PW 32001 B | 174,270 |
| PW 32001 C | 159,890 |
| PW 35001-SH A | 218,230 |
| PW 35001-SH B | 197,650 |
| PW 35001-SH C | 183,270 |
| PW 38001 B | 227,180 |
| PW 38001 C | 231,430 |
| PW 42001-SH B | 256,110 |
| PW 42001-SH C | 241,640 |
| PW 50001-SH C | 253,220 |



MAX. HORIZONTAL CAPACITY (IBS)

| |
|-------------|
| 4,450 @ 42' |
| 2,950 @ 52' |
| 2,050 @ 61' |
| 5,000 @ 42' |
| 3,400 @ 52' |
| 2,450 @ 61' |
| 3,950 @ 52' |
| 2,900 @ 61' |
| 4,500 @ 52' |
| 3,350 @ 61' |
| 1,780 @ 76' |



→ ENGINEERING SERVICES

Dealer installations are carried out through PALFINGER engineering services to ensure optimum layout, weight distribution and stability.

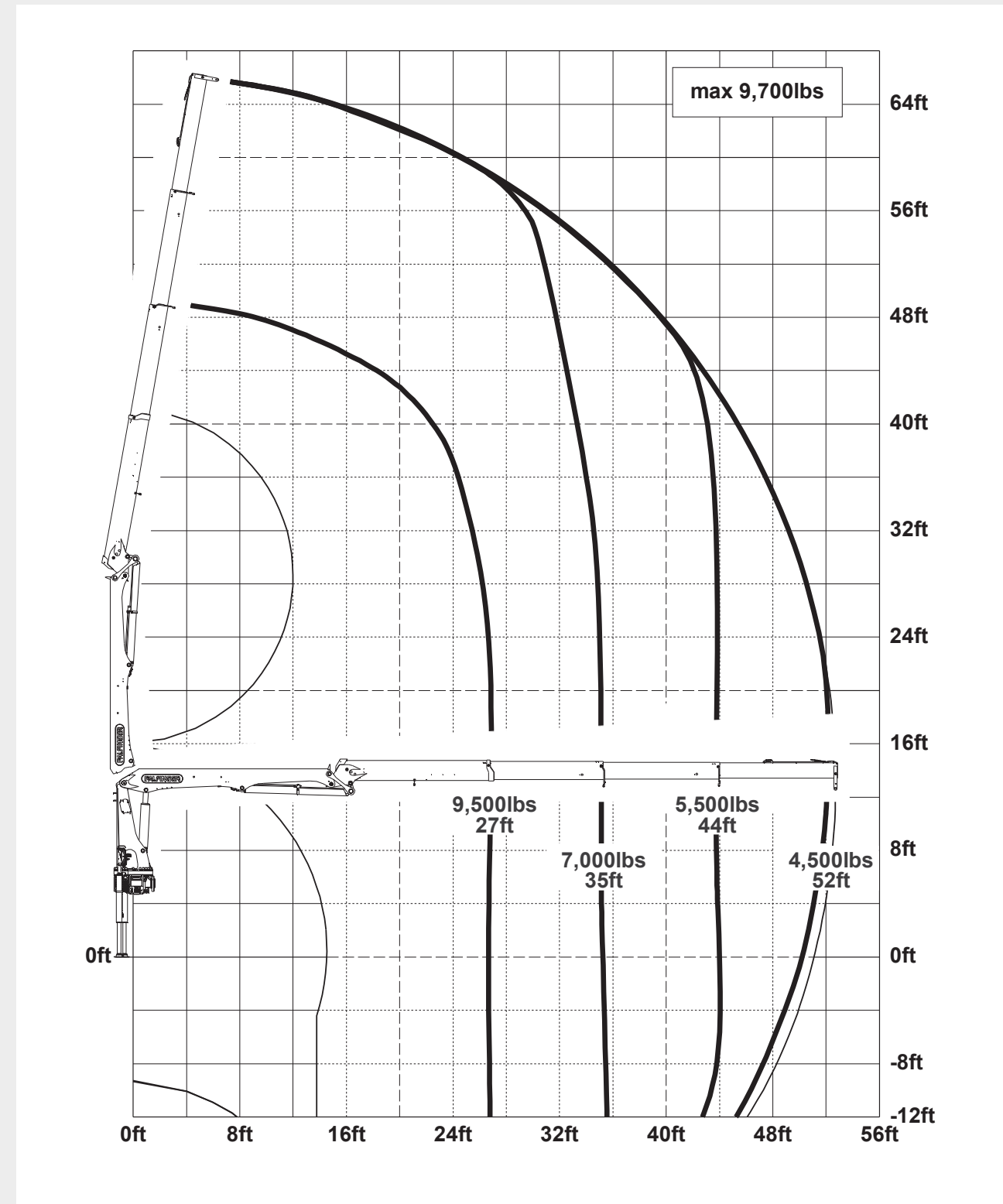


MATERIAL PW-SERIES

PW 42001-SH B

GENERAL

| MODEL | MAX. LIFTING MOMENT (FT.IBS) |
|---------------|------------------------------|
| PW 32001 A | 194,850 |
| PW 32001 B | 174,270 |
| PW 32001 C | 159,890 |
| PW 35001-SH A | 218,230 |
| PW 35001-SH B | 197,650 |
| PW 35001-SH C | 183,270 |
| PW 38001 B | 227,180 |
| PW 38001 C | 231,430 |
| PW 42001-SH B | 256,110 |
| PW 42001-SH C | 241,640 |
| PW 50001-SH C | 253,220 |



→ ENGINEERING SERVICES

Dealer installations are carried out through PALFINGER engineering services to ensure optimum layout, weight distribution and stability.



MAX. HORIZONTAL CAPACITY (IBS)

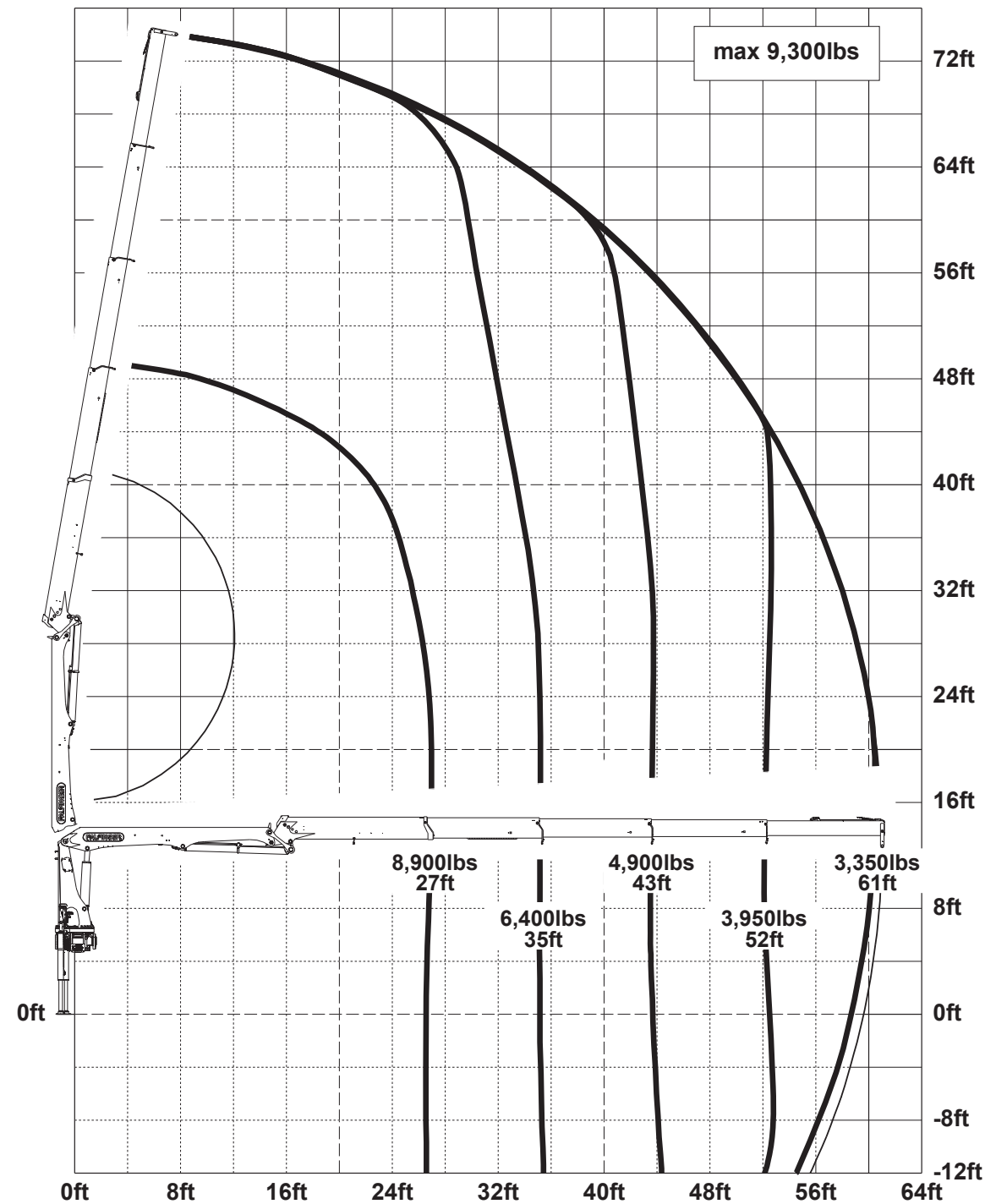
| |
|-------------|
| 4,450 @ 42' |
| 2,950 @ 52' |
| 2,050 @ 61' |
| 5,000 @ 42' |
| 3,400 @ 52' |
| 2,450 @ 61' |
| 3,950 @ 52' |
| 2,900 @ 61' |
| 4,500 @ 52' |
| 3,350 @ 61' |
| 1,780 @ 76' |

MATERIAL PW-SERIES

PW 42001-SH C

GENERAL

| MODEL | MAX. LIFTING MOMENT (FT.IBS) |
|---------------|------------------------------|
| PW 32001 A | 194,850 |
| PW 32001 B | 174,270 |
| PW 32001 C | 159,890 |
| PW 35001-SH A | 218,230 |
| PW 35001-SH B | 197,650 |
| PW 35001-SH C | 183,270 |
| PW 38001 B | 227,180 |
| PW 38001 C | 231,430 |
| PW 42001-SH B | 256,110 |
| PW 42001-SH C | 241,640 |
| PW 50001-SH C | 253,220 |



→ ENGINEERING SERVICES

Dealer installations are carried out through PALFINGER engineering services to ensure optimum layout, weight distribution and stability.



MAX. HORIZONTAL CAPACITY (IBS)

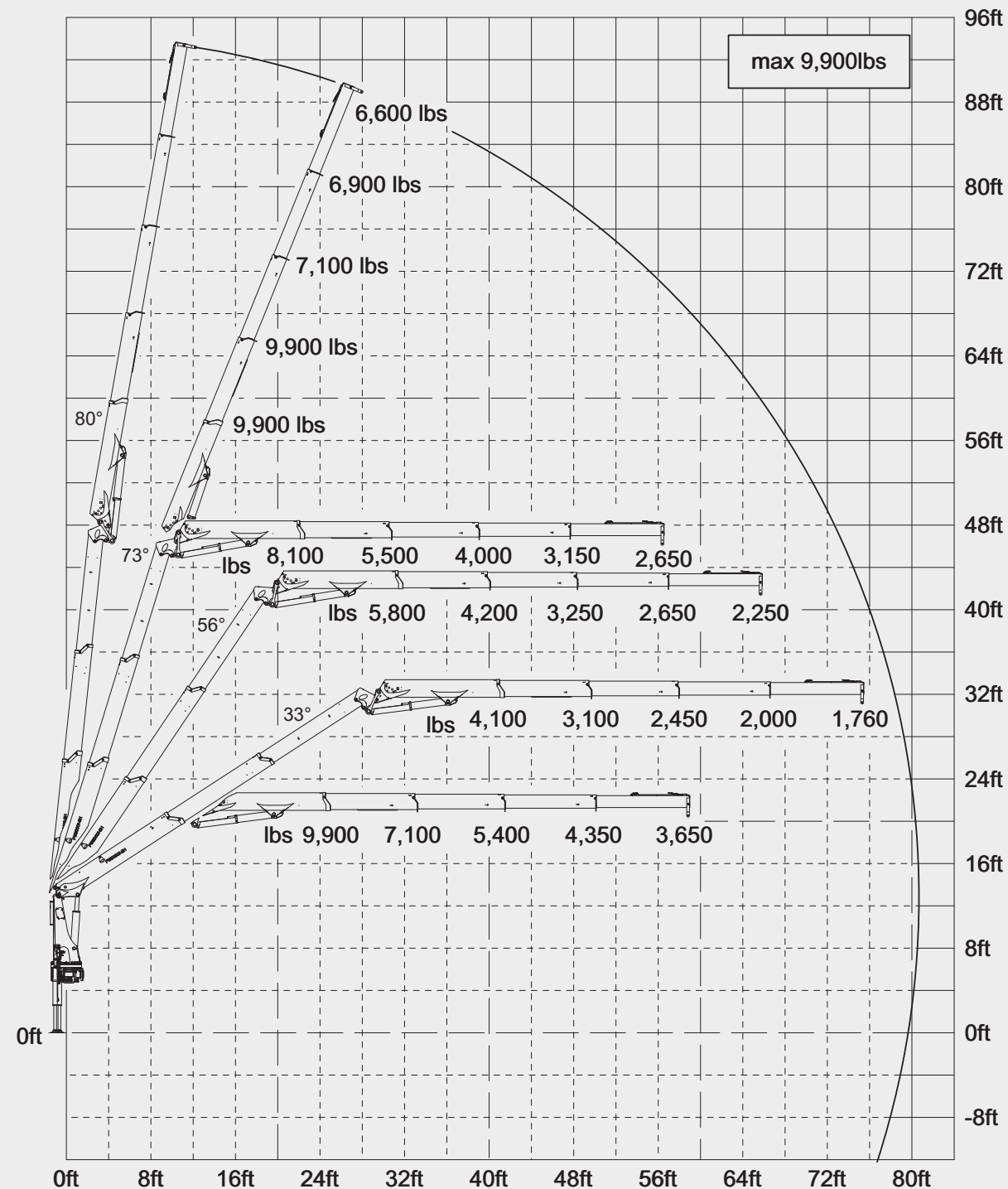
| |
|-------------|
| 4,450 @ 42' |
| 2,950 @ 52' |
| 2,050 @ 61' |
| 5,000 @ 42' |
| 3,400 @ 52' |
| 2,450 @ 61' |
| 3,950 @ 52' |
| 2,900 @ 61' |
| 4,500 @ 52' |
| 3,350 @ 61' |
| 1,780 @ 76' |

MATERIAL PW-SERIES

PW 50001-SH C

GENERAL

| MODEL | MAX. LIFTING MOMENT (FT.IBS) |
|---------------|------------------------------|
| PW 32001 A | 194,850 |
| PW 32001 B | 174,270 |
| PW 32001 C | 159,890 |
| PW 35001-SH A | 218,230 |
| PW 35001-SH B | 197,650 |
| PW 35001-SH C | 183,270 |
| PW 38001 B | 227,180 |
| PW 38001 C | 231,430 |
| PW 42001-SH B | 256,110 |
| PW 42001-SH C | 241,640 |
| PW 50001-SH C | 253,220 |



MAX. HORIZONTAL CAPACITY (IBS)

| |
|-------------|
| 4,450 @ 42' |
| 2,950 @ 52' |
| 2,050 @ 61' |
| 5,000 @ 42' |
| 3,400 @ 52' |
| 2,450 @ 61' |
| 3,950 @ 52' |
| 2,900 @ 61' |
| 4,500 @ 52' |
| 3,350 @ 61' |
| 1,780 @ 76' |



→ ENGINEERING SERVICES

Dealer installations are carried out through PALFINGER engineering services to ensure optimum layout, weight distribution and stability.



MATERIAL HANDLING CRANES

PW-SERIES



GENERAL

TECHNICAL DATA

APPLICATIONS

Rely on PALFINGER for a variety of material handling applications!

Maximize your delivery times thanks to the low dead weight of PALFINGER Material Handling Cranes, as the increased legal payloads allow you to transport more materials in each delivery.

With every job, feel confident that your materials will be delivered with smooth and precise operations and enjoy the paybacks in productivity.

MATERIAL HANDLING CRANES PW-SERIES



GENERAL

TECHNICAL DATA

APPLICATIONS



Rely on PALFINGER for a variety of material handling applications!

Maximize your delivery times thanks to the low dead weight of PALFINGER Material Handling Cranes, as the increased legal payloads allow you to transport more materials in each delivery.

With every job, feel confident that your materials will be delivered with smooth and precise operations and enjoy the paybacks in productivity.

MATERIAL HANDLING CRANES PW-SERIES



GENERAL

TECHNICAL DATA

APPLICATIONS



Rely on PALFINGER for a variety of material handling applications!

Maximize your delivery times thanks to the low dead weight of PALFINGER Material Handling Cranes, as the increased legal payloads allow you to transport more materials in each delivery.

With every job, feel confident that your materials will be delivered with smooth and precise operations and enjoy the paybacks in productivity.

MATERIAL HANDLING CRANES PW-SERIES



GENERAL

TECHNICAL DATA

APPLICATIONS



Rely on PALFINGER for a variety of material handling applications!

Maximize your delivery times thanks to the low dead weight of PALFINGER Material Handling Cranes, as the increased legal payloads allow you to transport more materials in each delivery.

With every job, feel confident that your materials will be delivered with smooth and precise operations and enjoy the paybacks in productivity.

MATERIAL HANDLING CRANES PW-SERIES



GENERAL

TECHNICAL DATA

APPLICATIONS



Rely on PALFINGER for a variety of material handling applications!

Maximize your delivery times thanks to the low dead weight of PALFINGER Material Handling Cranes, as the increased legal payloads allow you to transport more materials in each delivery.

With every job, feel confident that your materials will be delivered with smooth and precise operations and enjoy the paybacks in productivity.

MATERIAL HANDLING CRANES PW-SERIES



GENERAL

TECHNICAL DATA

APPLICATIONS



Rely on PALFINGER for a variety of material handling applications!

Maximize your delivery times thanks to the low dead weight of PALFINGER Material Handling Cranes, as the increased legal payloads allow you to transport more materials in each delivery.

With every job, feel confident that your materials will be delivered with smooth and precise operations and enjoy the paybacks in productivity.

MATERIAL HANDLING CRANES PW-SERIES



GENERAL

TECHNICAL DATA

APPLICATIONS



Rely on PALFINGER for a variety of material handling applications!

Maximize your delivery times thanks to the low dead weight of PALFINGER Material Handling Cranes, as the increased legal payloads allow you to transport more materials in each delivery.

With every job, feel confident that your materials will be delivered with smooth and precise operations and enjoy the paybacks in productivity.

MATERIAL HANDLING CRANES PW-SERIES



GENERAL

TECHNICAL DATA

APPLICATIONS



Rely on PALFINGER for a variety of material handling applications!

Maximize your delivery times thanks to the low dead weight of PALFINGER Material Handling Cranes, as the increased legal payloads allow you to transport more materials in each delivery.

With every job, feel confident that your materials will be delivered with smooth and precise operations and enjoy the paybacks in productivity.

MATERIAL HANDLING CRANES PW-SERIES



GENERAL

TECHNICAL DATA

APPLICATIONS



Rely on PALFINGER for a variety of material handling applications!

Maximize your delivery times thanks to the low dead weight of PALFINGER Material Handling Cranes, as the increased legal payloads allow you to transport more materials in each delivery.

With every job, feel confident that your materials will be delivered with smooth and precise operations and enjoy the paybacks in productivity.

MATERIAL HANDLING CRANES PW-SERIES



GENERAL

TECHNICAL DATA

APPLICATIONS



Rely on PALFINGER for a variety of material handling applications!

Maximize your delivery times thanks to the low dead weight of PALFINGER Material Handling Cranes, as the increased legal payloads allow you to transport more materials in each delivery.

With every job, feel confident that your materials will be delivered with smooth and precise operations and enjoy the paybacks in productivity.

MATERIAL HANDLING CRANES PW-SERIES



GENERAL

TECHNICAL DATA

APPLICATIONS



Rely on PALFINGER for a variety of material handling applications!

Maximize your delivery times thanks to the low dead weight of PALFINGER Material Handling Cranes, as the increased legal payloads allow you to transport more materials in each delivery.

With every job, feel confident that your materials will be delivered with smooth and precise operations and enjoy the paybacks in productivity.

MATERIAL HANDLING CRANES PW-SERIES



GENERAL

TECHNICAL DATA

APPLICATIONS



Rely on PALFINGER for a variety of material handling applications!

Maximize your delivery times thanks to the low dead weight of PALFINGER Material Handling Cranes, as the increased legal payloads allow you to transport more materials in each delivery.

With every job, feel confident that your materials will be delivered with smooth and precise operations and enjoy the paybacks in productivity.

MATERIAL HANDLING CRANES PW-SERIES



GENERAL

TECHNICAL DATA

APPLICATIONS



Rely on PALFINGER for a variety of material handling applications!

Maximize your delivery times thanks to the low dead weight of PALFINGER Material Handling Cranes, as the increased legal payloads allow you to transport more materials in each delivery.

With every job, feel confident that your materials will be delivered with smooth and precise operations and enjoy the paybacks in productivity.

PALFINGER

LIFETIME EXCELLENCE

HOME

OVERVIEW

FEATURES

SERVICE

ABOUT US

MATERIAL HANDLING PW-SERIES

GENERAL

TECHNICAL



“WITH PALFINGER, I CAN RUN MULTIPLE FUNCTIONS AT ONCE ...

...with precision and control. With other cranes, I could not boom out, rotate and lift at the same time without the crane slowing down. PALFINGER cranes are faster and smoother – very impressive machines!”

Jason, Crane Operator, Eikenhout
Grand Rapids, MI



→ SEE OUR FANS

Rely on PALFINGER for a variety of material handling applications. Maximize your delivery times thanks to the flexibility of our Material Handling Cranes, as the increased boom length allows you to transport more materials in each delivery. With every job, feel confident that your operations are safe and precise operations and enjoy the peace of mind that comes with Palfinger.

PALFINGER

LIFETIME EXCELLENCE

MATERIAL HANDLING CRANES PW-SERIES



MATERIAL HANDLING CRANES PW-SERIES



LOW-MAINTENANCE
EXTENSION SYSTEM

POWER LINK

Paltronic
50 Paltronic
contro **150**
controlled

PALTRONIC 50 & PALTRONIC 150

- Latest control electronics
- Most important safety and comfort functions, offering smooth control, safe operation with overload cut-off and capacity display

AOS
Active Oscillation Suppression
inside

AOS

- ACTIVE OSCILLATION SUPPRESSION
- Patented PALFINGER System
- Dampens the boom system of the crane
- Compensating for vibration and shock
- Significant increase in safety

RRC
Radio Remote Control
operated

RRC

- PALFINGER radio remote control
- Equipped with linear leavers
- Providing the greatest possible comfort of the operator
- PALTRONIC 50 cranes with LED capacity display
- PALTRONIC 150 cranes with LCD capacity display

KTL
protected

KTL

- Innovative technology for surface coating
- Foundation for durable and long-lasting surface protection
- PALFINGER Quality Standard - usually only found in the automobile industry

Paltronic
50
controlled

Paltronic
150
controlled

AOS
Active Oscillation Suppression
inside

RRC
Radio Remote Control
operated

KTL
protected





LIFETIME EXCELLENCE

HOME

OVERVIEW

FEATURES

SERVICE

ABOUT US

MATERIAL HANDLING CRANES PW-SERIES



+ LOW-MAINTENANCE EXTENSION SYSTEM

+ POWER LINK

+ TRANSPORT SWITCHES

+ TURNTABLE SLEWING SYSTEM

+ STABILIZER LIGHTS

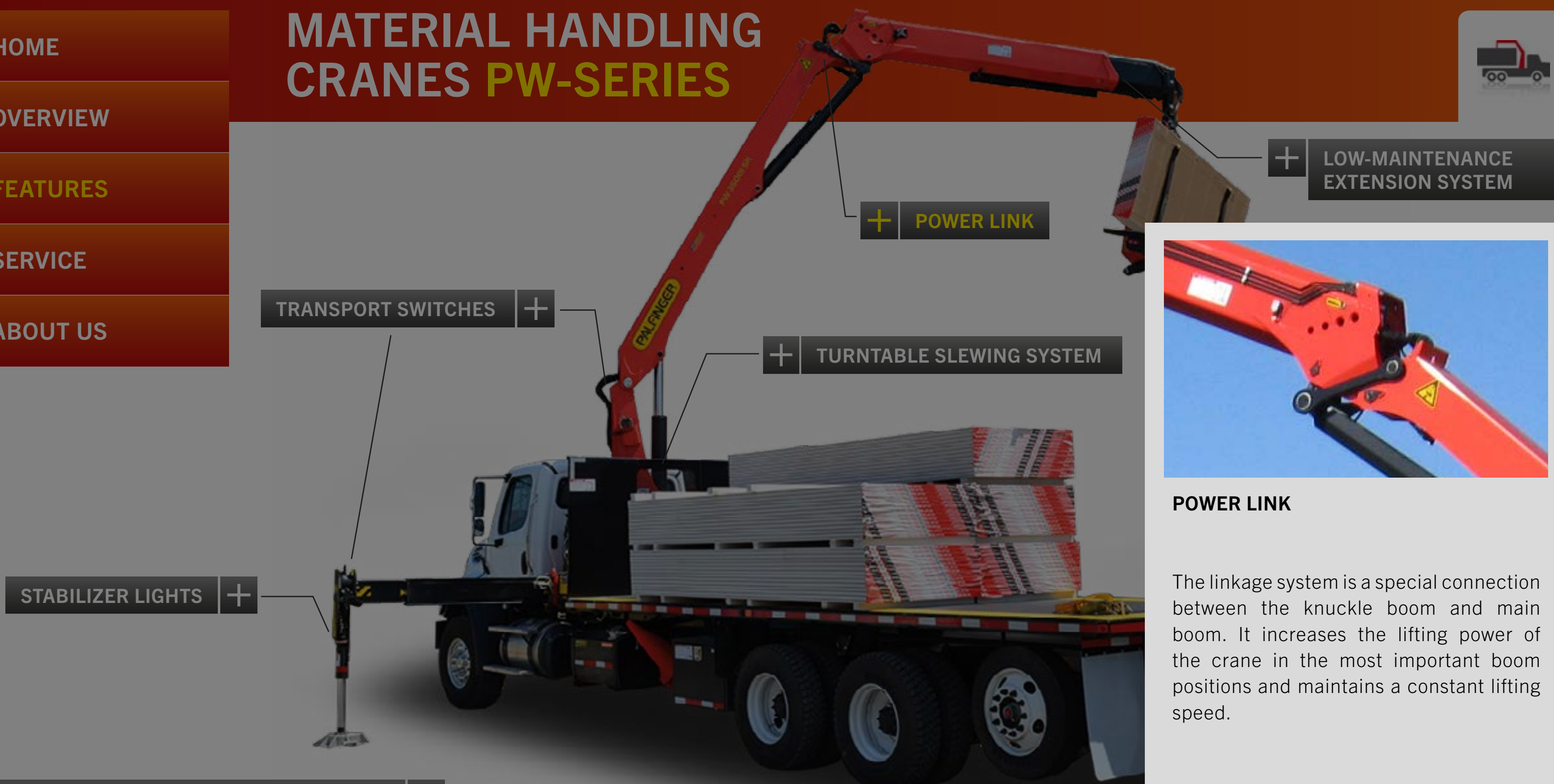


LOW-MAINTENANCE EXTENSION SYSTEM
REDUCES SERVICE TIME

With sliding elements made of synthetic material and the high-quality KTL coating, this boom system significantly simplifies service performed by the operator. This saves time and money – and protects the environment.

| | | | | | |
|-----------------------------------|------------------------------------|--|--|-------------------------|----------|
| Paltronic 50 controlled | Paltronic 150 controlled | AOS Active Oscillation Suppression inside | RRC Radio Remote Control operated | KTL protected | + |
|-----------------------------------|------------------------------------|--|--|-------------------------|----------|

MATERIAL HANDLING CRANES PW-SERIES



TRANSPORT SWITCHES +

+ POWER LINK

+ LOW-MAINTENANCE
EXTENSION SYSTEM

+ TURNTABLE SLEWING SYSTEM

STABILIZER LIGHTS +

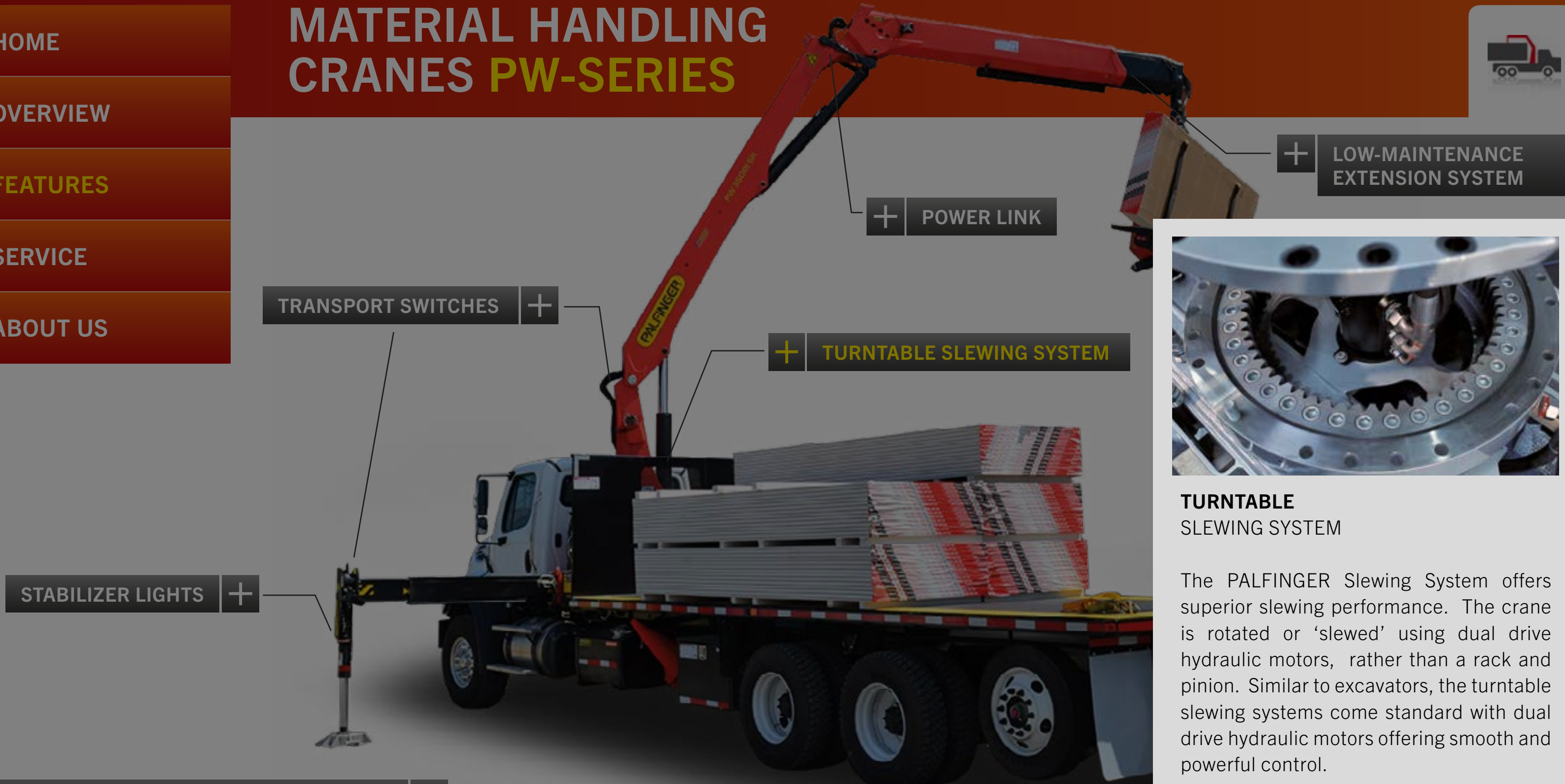


POWER LINK

The linkage system is a special connection between the knuckle boom and main boom. It increases the lifting power of the crane in the most important boom positions and maintains a constant lifting speed.

- Paltronic 50 controlled
- Paltronic 150 controlled
- AOS Active Oscillation Suppression inside
- RRC Radio Remote Control operated
- KTL KTL protected

MATERIAL HANDLING CRANES PW-SERIES



TRANSPORT SWITCHES +

+ POWER LINK

+ LOW-MAINTENANCE
EXTENSION SYSTEM

+ TURNTABLE SLEWING SYSTEM

STABILIZER LIGHTS +



**TURNTABLE
SLEWING SYSTEM**

The PALFINGER Slewing System offers superior slewing performance. The crane is rotated or 'slewed' using dual drive hydraulic motors, rather than a rack and pinion. Similar to excavators, the turntable slewing systems come standard with dual drive hydraulic motors offering smooth and powerful control.

Paltronic 50 controlled + Paltronic 150 controlled AOS Active Oscillation Suppression inside RRC Radio Remote Control operated KTL protected



LIFETIME EXCELLENCE

HOME

OVERVIEW

FEATURES

SERVICE

ABOUT US

MATERIAL HANDLING CRANES PW-SERIES



TRANSPORT SWITCHES +

+ POWER LINK

+ LOW-MAINTENANCE EXTENSION SYSTEM

+ TURNTABLE SLEWING SYSTEM

STABILIZER LIGHTS +



WARNING LIGHTS ON THE STABILIZERS

The LED warning lights on the stabilizer cylinders are used for better visibility of the outrigger position and the stabilizer cylinder. When the stabilizers are visible, safety is increased for the operator, pedestrians and surrounding traffic.

| | | | | | |
|-------------------------------|--------------------------------|---|---|------------------|---|
| Paltronic 50 controlled | Paltronic 150 controlled | AOS Active Oscillation Suppression inside | RRC Radio Remote Control operated | KTL protected | + |
|-------------------------------|--------------------------------|---|---|------------------|---|

MATERIAL HANDLING CRANES PW-SERIES



+ LOW-MAINTENANCE
EXTENSION SYSTEM

+ POWER LINK

+ TURNTABLE SLEWING SYSTEM

+ TRANSPORT SWITCHES

+ STABILIZER LIGHTS



TRANSPORT SWITCHES

Factory-mounted switches to indicate transport positions offer well-protected mounting locations and a clean appearance.

- Boom in transport position switch. (TRAN2)
- Outriggers and stabilizers retracted. (ABSTW)

+ Paltronic 50 controlled Paltronic 150 controlled AOS Active Oscillation Suppression inside RRC Radio Remote Control operated KTL protected

PALFINGER

LIFETIME EXCELLENCE

MATERIAL HANDLING CRANES

PW-SERIES



SERVICE NETWORK

SPARE PARTS

WARRANTY

Your PALFINGER Crane will be a strong partner for all of your Material Handling needs. Enjoy the pay backs of increased productivity and maximized delivery times while experiencing minimal downtime for your business.

Should you encounter a problem - rely on the expertise and experience of our factory trained service network. Count on PALFINGER - we will put you back on the job.

RELIABILITY MEANS:

- After sales and service support
- Experienced service staff
- Service training at PALFINGER University
- Overnight parts delivery (within 24 h)
- Warranty programs



MATERIAL HANDLING CRANES PW-SERIES



SERVICE NETWORK

SPARE PARTS

WARRANTY

Ease of service and low maintenance on equipment is important in the material handling industry. PALFINGER has a strong and growing service network across North America, with over 50 Service partners specializing in PALFINGER PW-Cranes.



MATERIAL HANDLING CRANES PW-SERIES



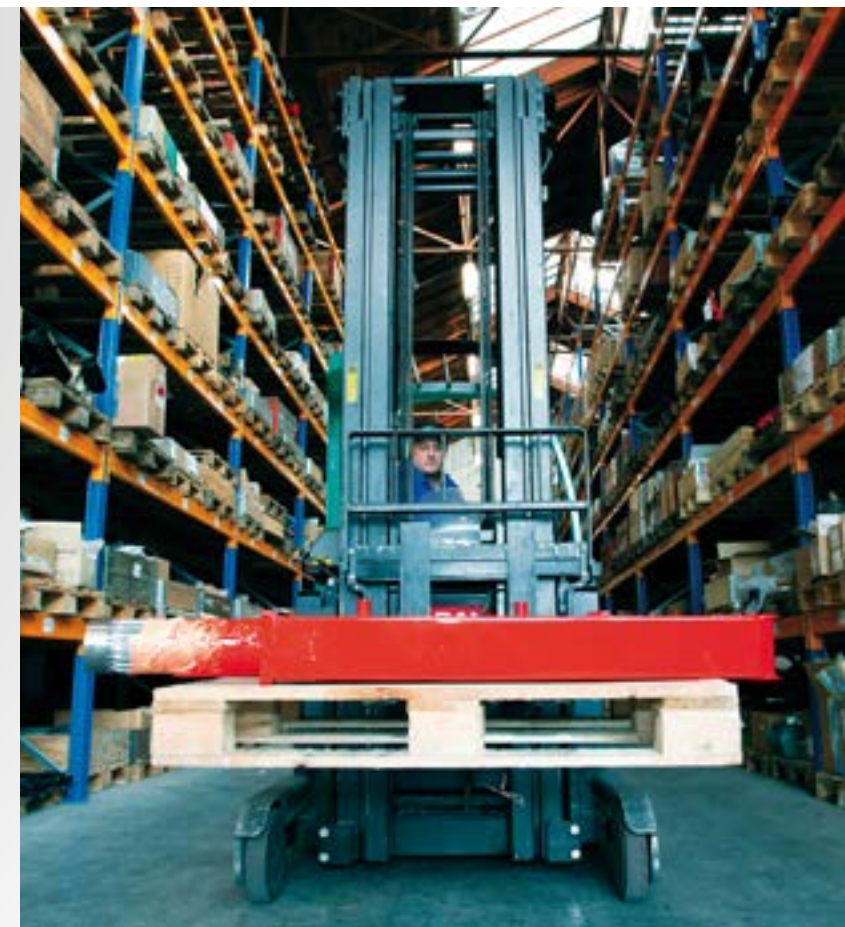
SERVICE NETWORK

SPARE PARTS

WARRANTY

We know that your business demands more than just top-quality products and that is why PALFINGER parts are your best choice for performance and reliability. We will provide you with genuine PALFINGER spare parts and components that will ensure long life and low maintenance costs for your PALFINGER equipment.

Your local PALFINGER dealer / distributor is the first line of customer parts service. As a company, PALFINGER is dedicated to keeping our dealers equipped with access to a large inventory of spare parts and experienced parts staff.



PALFINGER

LIFETIME EXCELLENCE

MATERIAL HANDLING CRANES

PW-SERIES



SERVICE NETWORK

SPARE PARTS

WARRANTY

PALFINGER cranes are quality products.

We guarantee maximum cost-effectiveness through a comprehensive warranty plan.

MORE EFFICIENCY IN USE

- 12 months full warranty on all cranes
- 24 months warranty on radio remote controls
- 36 months warranty on all load-bearing parts of cranes that work in hook operation (24 months in grab operation)

EXTENDED WARRANTY

- Warranty extension up to 24 months full warranty possible
- Warranty extension up to 36 months full warranty possible

Contact your PALFINGER representative to see our full warranty policy for details and limitations.





LIFETIME EXCELLENCE

PALFINGER NORTH AMERICA GROUP



LIFETIME EXCELLENCE

SALES NETWORK

MANUFACTURING



A STRONG GLOBAL PARTNER - YOU CAN RELY ON

- Founded in 1932
- Leading international manufacturer of innovative lifting solutions
- Over 9,100 employees world-wide
- Comprised of 68 companies in 25 countries
- More than 200 independent general importers - in over 130 countries on all continents
- Market-ready solutions

PALFINGER NORTH AMERICA GROUP



LIFETIME EXCELLENCE

SALES NETWORK

MANUFACTURING



**TO US, “LIFETIME EXCELLENCE”
MEANS SETTING TOP PERFORMANCE
AS A MINIMUM REQUIREMENT.**

LIFETIME EXCELLENCE is our promise. Our core message. Our brand essence. To our customers, it means top performance without compromise. The most cost-effective, reliable and innovative lifting solutions in a global network of expert service partners – for the entire product lifetime.

PLAY VIDEO

PALFINGER NORTH AMERICA GROUP



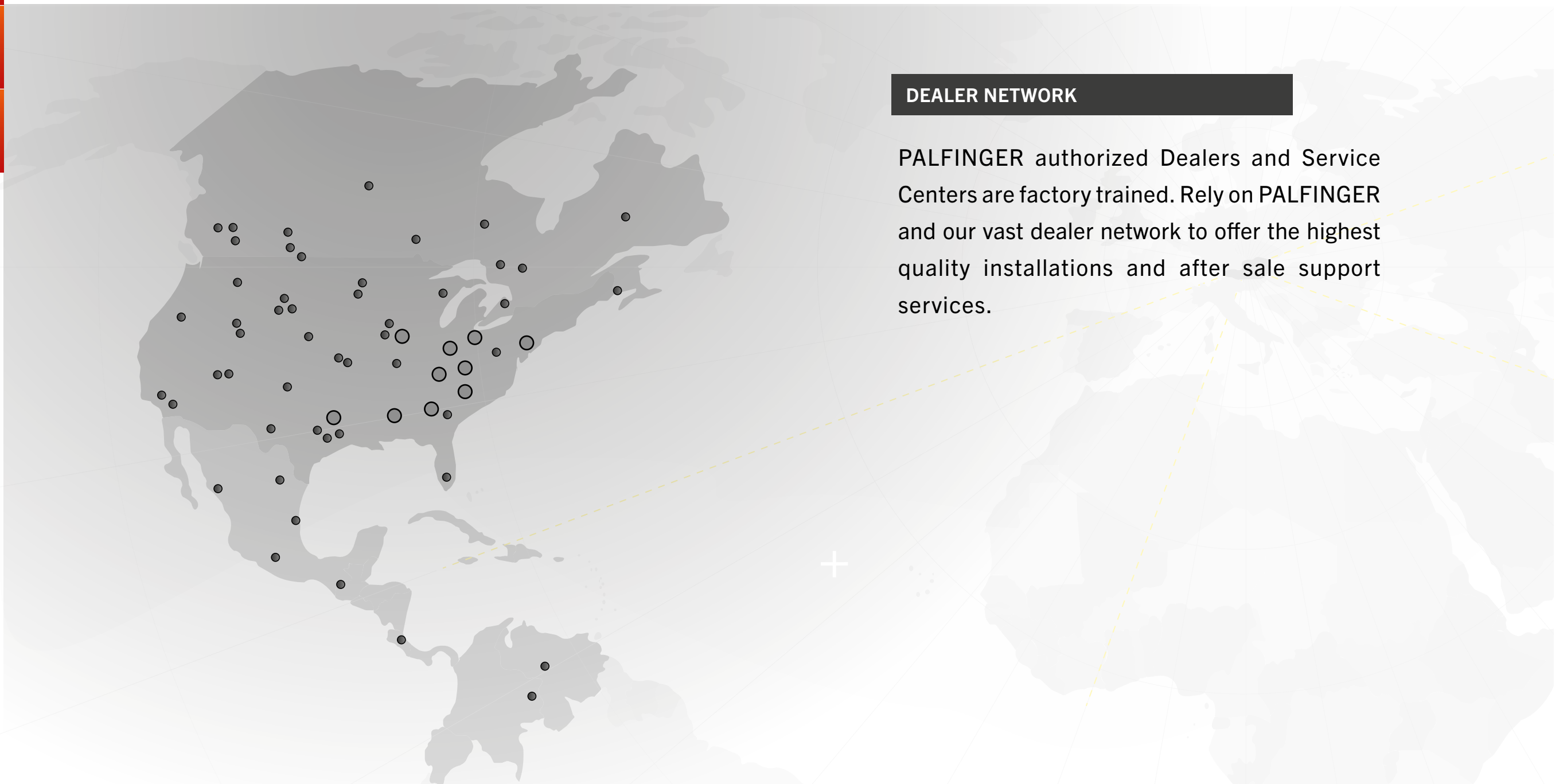
LIFETIME EXCELLENCE

SALES NETWORK

MANUFACTURING

DEALER NETWORK

PALFINGER authorized Dealers and Service Centers are factory trained. Rely on PALFINGER and our vast dealer network to offer the highest quality installations and after sale support services.



PALFINGER NORTH AMERICA GROUP



LIFETIME EXCELLENCE

SALES NETWORK

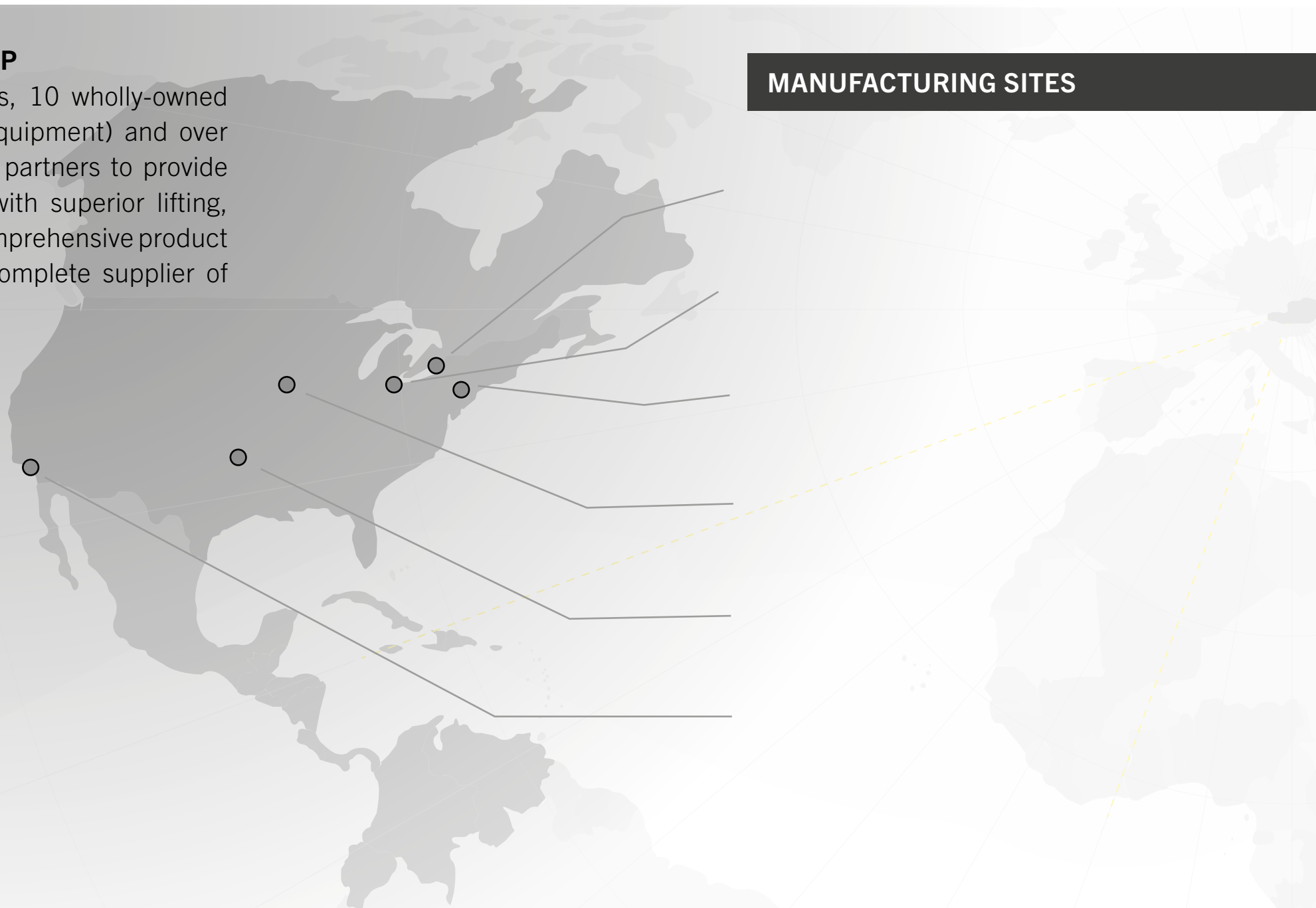
MANUFACTURING

PALFINGER NORTH AMERICA GROUP

consists of 6 manufacturing locations, 10 wholly-owned distribution sites (PALFLEET Truck Equipment) and over 1000 dealers / distributors and sales partners to provide North and Latin American markets with superior lifting, loading and handling solutions. Our comprehensive product portfolio qualifies PALFINGER as a complete supplier of truck-mounted equipment.

PALFINGER
is the one stop shop
for premium, single source solutions.

MANUFACTURING SITES





PALFINGER NORTH AMERICA
NIAGARA FALLS, CANADA

A market leader in the design and manufacturing of knuckle boom cranes, Palfinger North America began in Niagara Falls, Canada, where a crane sales and service facility was established in 1989. Steady growth allowed for facility expansions to accommodate Crane assembly and improved service and spare parts delivery (2002-2005), in addition to a new testing hall and increased facility space (2008). The product portfolio has expanded to include PALFINGER truck-mounted forklifts, EPSILON forestry / recycling loaders and aerial work platforms.

Facility highlights include:

- ➔ Crane assembly
- ➔ Spare parts center



MANUFACTURING

MANUFACTURING SITES

- + NIAGARA FALLS, ON
- + TIFFIN, OH
- + TRENTON, NJ
- + COUNCIL BLUFFS, IA
- + OKLAHOMA CITY, OK
- + CERRITOS, CA



PALFINGER NORTH AMERICA TIFFIN, OH

Through the acquisition of Tiffin Loader Crane in 2000, Palfinger North America opened a sales distribution center in Tiffin, OH, to strengthen its presence in the US market. In 2006, an assembly line was established here for PALFINGER truck-mounted forklifts.

Facility highlights include:

- ➔ PALFINGER University
- ➔ Headquarters for PalFleet Truck Equipment



MANUFACTURING

MANUFACTURING SITES

+ NIAGARA FALLS, ON

+ TIFFIN, OH

+ TRENTON, NJ

+ COUNCIL BLUFFS, IA

+ OKLAHOMA CITY, OK

+ CERRITOS, CA



PALFINGER AMERICAN ROLL-OFF EAST COAST HUB, TRENTON, NJ

Established in 1972, Palfinger American Roll-Off (PARO) became a member of the PALFINGER North America Group in 2009. With manufacturing operations located in Trenton, NJ, PARO offers a range of container handling solutions including cable roll-off hoists and the PALFINGER Hooklift brand. The hub also provides installation, service and warehousing for other PALFINGER products and is a location for PALFINGER University.

Facility highlights include:

- ➔ East Coast sales, distribution and service for PALFINGER Liftgates
- ➔ Sales and service operations for PalFleet Trenton



MANUFACTURING

MANUFACTURING SITES

+ NIAGARA FALLS, ON

+ TIFFIN, OH

+ TRENTON, NJ

+ COUNCIL BLUFFS, IA

+ OKLAHOMA CITY, OK

+ CERRITOS, CA



OMAHA STANDARD PALFINGER COUNCIL BLUFFS, IA

Located in Council Bluffs, IA, Omaha Standard was established in 1926 and became a member of the PALFINGER North America Group in 2008. Setting the industry standard for more than 80 years, Omaha Standard PALFINGER (OSP) is a leading manufacturer of truck bodies and work truck equipment, including: service bodies, service cranes, PAL Pro Mechanic Trucks, air compressors, pick-up lifts, telescopic / scissor hoists and platforms. OSP offers one of the most comprehensive product portfolios available from one supplier.

Facility highlights include:

- ➔ Environmentally-friendly e-coat paint facility
- ➔ Manufacturing location for PALFINGER Liftgates



MANUFACTURING

MANUFACTURING SITES

+ NIAGARA FALLS, ON

+ TIFFIN, OH

+ TRENTON, NJ

+ COUNCIL BLUFFS, IA

+ OKLAHOMA CITY, OK

+ CERRITOS, CA

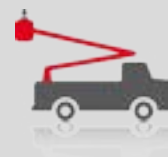


ETI EQUIPMENT TECHNOLOGY, LLC OKLAHOMA CITY, OK

A PALFINGER company since 2010, ETI is a leading manufacturer of aerial lift trucks (bucket trucks), mobile service cranes and custom bodies designed specifically for telecommunications, electrical utility, energy, industrial and other professionals. ETI operates on a direct sale basis in the United States and operates an export division for products sold throughout the world. Since founding in 1991, ETI has become the leader in providing customer service solutions thanks to their one driving goal: to make sure that you can depend on ETI.

Facility highlights include:

- ➔ 300 manufacturing, engineering and service professionals
- ➔ Fiberglass boom manufacturing



MANUFACTURING

MANUFACTURING SITES

+ NIAGARA FALLS, ON

+ TIFFIN, OH

+ TRENTON, NJ

+ COUNCIL BLUFFS, IA

+ OKLAHOMA CITY, OK

+ CERRITOS, CA



PALFINGER LIFTGATES WEST COAST HUB, CERRITOS, CA

Offering a range of leading hydraulic liftgates, PALFINGER Liftgates entered the North American market under the Interlift brand in 1993 and joined the PALFINGER North America Group in 2007. With manufacturing operations located in Cerritos, CA, and Council Bluffs, IA, combined with full service, parts and sales support in Cerritos, CA and Trenton, NJ, distributors, fleet and leasing customers across North and Latin America can expect the finest support.

Facility highlights include:

- ➔ PALFINGER University



MANUFACTURING

MANUFACTURING SITES

+ NIAGARA FALLS, ON

+ TIFFIN, OH

+ TRENTON, NJ

+ COUNCIL BLUFFS, IA

+ OKLAHOMA CITY, OK

+ CERRITOS, CA