



Page 1 of 15
Date: Aug 2009

Replaces:
Dated:

The IC-80-H is a self-propelled Industrial Crane designed for in-plant lifting and material handling applications, with special features of low height, narrow width, short length, cargo deck, and standard four-wheel steer and front-wheel drive. The chassis includes a frame, four independently controlled hydraulic outriggers, engine, torque converter, 4-speed powershift transmission, front planetary drive/steer and rear steer axles, fuel tank, hydraulic tank, control station, and full power steering. The boom assembly includes a hydraulic powered continuous rotation turret, 3-section boom, hydraulic boom elevating cylinder, hydraulic boom telescopic cylinders, and hydraulic powered hoist. Rated Capacity Limiter is standard.

IC-80-1H:

3-section hydraulically extended boom with capacity of 18,000 pounds (8,160 kg) at a 5-foot (1.52 m) load radius.

IC-80-2H:

3-section hydraulically extended boom with capacity of 18,000 pounds (8,160 kg) at a 5-foot (1.52 m) load radius.

IC-80-3H:

3-section hydraulically extended boom with capacity of 18,000 pounds (8,160 kg) at a 5-foot (1.52 m) load radius.

General:

Length:

| | |
|----------|----------------------------|
| IC-80-1H | 14 feet 6 inches (4.42 m) |
| IC-80-2H | 15 feet 10 inches (4.83 m) |
| IC-80-3H | 17 feet 10 inches (5.44 m) |

Width

6 feet 6 inches (1.98 m)

Height:

| | |
|---------|--------------------------|
| Overall | 7 feet 3 inches (2.21 m) |
| Deck | 3 feet 5 inches (1.04 m) |

Wheelbase

7 feet 2 inches (2.18 m)

Ground Clearance:

| | |
|---------------------|-------------------|
| Chassis | 11 inches (28 cm) |
| Minimum (rear axle) | 7 inches (18 cm) |

Angle of Approach

22 degrees

Angle of Departure

21 degrees

Outriggers:

| | |
|-------------|--------------------------|
| Spread | 9 feet 7 inches (2.92 m) |
| Penetration | 3 7/16 inches (8.7 cm) |

Boom Movement:

| | IC-80-1H | IC-80-2H | IC-80-3H |
|-----------|---------------------|----------------------|----------------------|
| Rotation | Continuous | Continuous | Continuous |
| Elevation | 0° to 70° | 0° to 70° | 0° to 70° |
| Telescope | 12 ft (3.66 m) Hyd. | 14½ ft (4.42 m) Hyd. | 18½ ft (5.64 m) Hyd. |

Boom Speeds:

| | | | |
|-----------|------------|------------|------------|
| Rotation | 2 RPM | 2 RPM | 2 RPM |
| Elevation | 10 seconds | 10 seconds | 10 seconds |
| Telescope | 17 seconds | 21 seconds | 27 seconds |

General Continued:

| Sheave Height: (Nominal) | IC-80-1H | IC-80-2H | IC-80-3H |
|---------------------------------|----------------------|----------------------|----------------------|
| W/O Boom Extension | 28 ft 2 in (8.59 m) | 31 ft 9 in (9.68 m) | 37 ft 5 in (11.40 m) |
| With Boom Extension | 37 ft 5 in (11.40 m) | 41 ft 0 in (12.50 m) | 46 ft 8 in (14.22 m) |

| Horizontal Reach: | | | |
|--------------------------|---------------------|-------------------|-------------------|
| W/O Boom Extension | 20 ft 2 in (6.15 m) | 24 feet (7.32 m) | 30 feet (9.14 m) |
| With Boom Extension | 30 ft 2 in (9.19 m) | 34 feet (10.36 m) | 40 feet (12.19 m) |

| Weight: (Nominal) | | | |
|--------------------------|----------------------|----------------------|----------------------|
| 4-Wheel Steer: | 16,150 lb (7,325 kg) | 16,350 lb (7,415 kg) | 16,750 lb (7,600 kg) |
| Front Axle | 7,250 lb (3,290 kg) | 7,600 lb (3,445 kg) | 8,300 lb (3,765 kg) |
| Rear Axle | 8,900 lb (4,035 kg) | 8,750 lb (3,970 kg) | 8,450 lb (3,835 kg) |
| 4-Wheel Drive: | 17,000 lb (7,710 kg) | 17,200 lb (7,800 kg) | 17,600 lb (7,985 kg) |
| Front Axle | 7,550 lb (3,425 kg) | 7,900 lb (3,585 kg) | 8,550 lb (3,880 kg) |
| Rear Axle | 9,450 lb (4,285 kg) | 9,300 lb (4,215 kg) | 9,050 lb (4,105 kg) |

| Steering: | |
|--------------------------|---------------------------------------|
| Turning Radius | 10 feet 0 in (3.05 m) (4-Wheel Steer) |
| Aisle Width for 90° Turn | 9 feet 6 in (2.90 m) |
| Steering Modes | Rear Steer, Round Steer, Crab Steer |

| | STANDARD | 4-WHEEL DRIVE |
|---------------------|-----------------------------------|-----------------------------------|
| Road Speed | 22 mph (35 kph) | 20 mph (32 kph) |
| Drawbar Pull | 15,500 lb ¹ (7,030 kg) | 19,600 lb ¹ (8,890 kg) |
| Gradeability | 63 percent ¹ | 71 percent ¹ |

1) Calculated values based on Cummins 3.3L Turbo Engine
(Wheels may spin before these values are reached.)

Engine:

Standard:

Diesel Engine:

Cummins QSB 3.3L Turbo, EPA Tier III:

Cummins QSB 3.3 turbo-charged diesel industrial engine. Water cooled, 4-cylinder, 199 CID (3.3 L), bore 3.74 in. (9.50 cm), stroke 4.53 in. (11.51 cm), 85 HP (63.4 kw) at governed speed of 2,600 RPM. Maximum torque, 274 ft lb (371 n-m) at 1,400 RPM. 90-amp alternator included. 17.6 gallon (66.6 L) fuel tank. High temperature and low oil pressure shutdown is included in engine management system. Throttle control switch for setting engine speed at 1,200 or 1,800 RPM. Charge air cooler and grid heater included. Net Weight: 180 lb (81.6 kg)

Optional Engines and Engine Accessories:

Spark Arrester Muffler:

Spark arrester muffler used in addition to standard muffler. Net Weight: 10 lb (4.5 kg)

Catalytic Converter:

Catalytic converter for diesel engine. Reduces emissions. Net Weight: 10 lb (4.5 kg)

Engine Heater:

Engine coolant heater installed with hoses in coolant system to circulate warm water through engine. Plugs into 120-volt AC extension cord. 1,500 watts.

Transmission:

Powershift transmission with four speeds in forward and reverse. Provides powershifts at any engine speed in any gear. All shifting is done with a single lever electrical control mounted on the steering column. Multiple-disc clutch packs operated by solenoid valves provide forward, neutral, reverse and speed selection. Equipped with oil cooler and filter.

| Ratios | <u>STANDARD</u> | | | <u>4-WHEEL DRIVE</u> | | |
|--------|---------------------------------|------------------------|-----------------------------------|-----------------------------|-----------------------------------|--|
| | Transmission Forward or Reverse | Travel Speed MPH (KPH) | Drawbar Pull ¹ lb (KG) | Travel Speed MPH (KPH) | Drawbar Pull ¹ lb (KG) | |
| 1st | 5.72:1 | 4 (6) | 15,500 (7,030) | 3 (5) | 19,600 (8,890) | |
| 2nd | 3.23:1 | 7 (11) | 8,700 (3,945) | 6 (10) | 11,000 (4,990) | |
| 3rd | 1.77:1 | 13 (21) | 4,600 (2,085) | 11 (11) | 5,900 (2,675) | |
| 4th | 1.00:1 | 22 (35) | 2,500 (1,135) | 20 (32) | 3,300 (1,495) | |

1) Drawbar pull is calculated based on Cummins 3.3L Turbo diesel engine.

Torque Converter:

Stall torque ratio of 2.2/1. Attached to engine flywheel.

Front Axle:

Standard:

Planetary drive axle with 11.625:1 ratio. Differential is “No Spin”. Front axle is mounted rigidly to frame.

Optional 4-Wheel Drive:

Planetary drive/steer axle with integral drop box input for an overall 13.76:1 ratio. Differential is “No Spin” Oscillation is 1 1/2 degrees in either direction. Only available with mining and industrial tires.

Rear Axle:

Standard:

Drop-center axle beam casting with 1½ degree oscillation in either direction.

Optional 4-Wheel drive:

Planetary drive/steer axle with overall 13.76:1 ratio including the reduction through the front-axle-mounted drop box. Differential is limited slip. Oscillation is 1 1/2 degrees in either direction. Only available with mining and industrial tires. Diesel engine is required for this option. Net Weight: 550 lb (250 kg) including front axle.

Steering:

Standard:

Hydraulic steering unit with two cylinders on rear axle and one double-rod cylinder on front axle. Allows limited steering when engine is not running. Rear axle is the primary steer. An electric switch in the operator’s compartment is used to select rear-wheel steering, four-wheel round steering or crab steering. Electronic sensors and control box automatically align the steering when a new mode is selected.

Brakes:

Standard:

Four-wheel hydraulic. Rear axle has drum type on 4x2. Front axle has wet disc brakes. Parking brake is disc type.

Brakes on Optional 4-Wheel Drive:

Wet disc on both axles. Parking brake is disc type.

Tires:

Standard:

10.00 x 15, Load Range H bias ply tires, 16-ply rating.

Mining and Industrial Tires (Standard with 4 x 4):

36 x 11-15, 16-ply rating pneumatic tires. Optional for 4 x 2. Net Weight: 120 lb (55 kg)

Non-Marking Option for Mining and Industrial Tires:

Non-marking option for Mining and Industrial Tires. Net Weight: 120 lb (55 kg)

Tire Options:

Solid Rubber Tires:

8:25x15. These tires will reduce overall height & ground clearance by 1½ in (3.8 cm). Net Weight: 400 lb (180 kg)

Foam Filling of Tires:

All four tires foam-filled. Net Weight: 900 lb (410 kg)

Spare Tire and Wheel Mounted:

Radial, Net Weight: 163 lb (74 kg)

Bias, Net Weight: 163 lb (74 kg)

Mining and Industrial Tire, Net weight: 193 lb (88 kg)

Mining and Industrial Tire, Non-Marking: Net Weight: 193 lb (88 kg)

Chassis:

Standard:

Cargo Deck:

Total Deck Area: 53 Sq Ft (4.92 m²) a maximum of 14,000 lb (6,350 kg) may be carried on the deck when centered over or between axles.** Seven stake pockets are provided along edges of deck for 1.0 in (2.5 cm) pipe stakes. Stakes furnished. Cargo decks have skid resistant coating.

** 14,000 lb (6,350 kg) allowed at creep speed below 2 mph (3.2 kph) & less than 200 ft (61 m) in 30 minutes.

Fire Extinguisher:

1-A:10-BC, 2½ lb (1.13 kg) dry chemical. Mounted in operator's compartment.

Lifting Rings:

Consists of four rings, one at each corner of the load deck, so sling can be attached for lifting crane. Rings hang below deck surface when not in use.

Tie Downs:

Two holes in the rear bumper (in conjunction with the pulling eyes) provide tie down location for transporting crane by truck or cargo container.

Steps:

A step is located on each front corner providing access to deck area.

Battery:

Located behind door on left hand rear corner of chassis. Compartment available on right hand rear corner of chassis for second battery if necessary.

Outriggers:

Four hydraulic outriggers of box-beam construction. Independent controls for each outrigger. Hydraulic cylinders are equipped with direct-connected holding valves. Pad dimensions: 9 in (23 cm) x 12 in (30 cm)

Pulling Eyes:

Heavy eyes on front bumper provided for attachment of hook block so main hoist line can be used for pulling loads at or near floor level.

Vandalism Protection:

Lockable hood for protection of engine compartment.

Accessory Storage Box:

Consists of box under front deck plate for carrying sheave block and other items. Flush fitting cover is lockable. Storage box is 14 in (35.5 cm) deep x 10½ in (26.7 cm) wide x 27 in (68.6 cm) long.

Chassis Options and Accessories:**Auxiliary Winch:**

Optional worm gear winch, mounted behind front bumper, with a lever control at the operator's console. Hydraulic powered to provide bare drum line pull of 5,000 lb (2,268 kg) at 46 feet (14 m) per minute. Winch drum is 3½ in (8.9 cm) diameter by 11 in (27.9 cm) long. This winch includes 75 ft (22.9 m) of 3/8 in (9.5 mm) wire rope, hook and four-way roller guide. Net Weight: 100 lb (45 kg)

Pintle Hook - Rear:

T-60-A Holland pintle hook mounted on rear frame member provides capacity for 2,000 lb (905 kg) tongue weight and 10,000 lb (4,535 kg) trailer weight. Net Weight: 10 lb (4.5 kg)

Pintle Hook - Front:

T-60-A Holland pintle hook mounted on front frame member. Provides same capacity as rear pintle hook. Net Weight: 25 lb (11.3 kg)

Headlight and Taillight Grilles:

Consists of welded steel protective grilles for headlights and taillights. Easily removable for replacing bulb. Net Weight: 40 lb (18.1 kg)

Rearview Mirrors:

One right-hand and one left-hand mirror, 6 in (15.2 cm) wide x 16 in (40.6 cm) high, mounted on deck stakes. Pivot out of way when contacted by obstacle at side of deck. Net Weight: 12 lb (5.4 kg)

Operator's Compartment:**Standard:**

Operator's control station provides one-position access to all operating functions. Includes adjustable operator's seat and retracting seat belt.

Operator's Compartment Options and Accessories:**Operator's Guard: (Not Available with Cab)**

Tubular steel weldment with heavy expanded steel mesh top section, bolts over the operator's compartment. Net Weight: 55 lb (25 kg)

Operator's Guard Cover:

Clear vinyl cover goes over guard for inclement weather. Has zipper and velcro roll-up door. Net Weight: 15 lb (6.8 kg)

Operator's Guard Door:

Hinged door covers operator compartment side opening. Has latch handle outside and knob inside. Rubber gasket contacts chassis. Net Weight: 40 lb (18.1 kg)

All Weather Cab:

Consists of rigid mounted canopy section and removable hinged door with safety glass. Rugged canopy structure with laminated glass front and top. Door is equipped with a keyed lock to protect operator's station. Includes defroster fan, 24,000 BTU heater with two-speed fan and 12V electric windshield wiper. There are sliding windows in the door and right-hand side. Dome light is included for operator's convenience. Also includes locking caps for fuel and hydraulic tanks. Net Weight: 215 lb (97.5 kg)

Cab Heater Only:

Provides 24,000 BTU heater with two-speed fan for units without All Weather Cab. Net Weight: 12 lb (5.4 kg)

Windshield Washer:

Provides reservoir, pump and nozzle for windshield washer.

Floor Mat:

Vinyl mat with foam backing covers floor, front wall and lower portion of right hand wall of operator's compartment.

Operator's Suspension Seat:

Grammer suspension seat provides additional operator comfort. Net Weight: 15 lb (6.8 kg)

Operator's Compartment Options and Accessories: (Cont'd)**Noise Reduction Kit - Cab:**

Includes rubber floor mats and control valve cover and side panels of foam-backed perforated vinyl for noise reduction. Net Weight: 13 lb (5.9 kg)

Air Conditioning:

Complete system using 134a coolant. Has combination cooling and heating unit in cab. Net Weight: 125 lb (56.7 kg)

Electrical System:**Standard:****12-Volt Battery:**

Diesel Units: Group 31 with 950 CCA rating.

Instrument Group:

Located at operator's station and includes fuel gauge, hourmeter and bubble level. Hourmeter records hours only during actual engine operation. Also included are: warning lights for low oil and transmission pressure, turn signal, high beams, hazard lights, parking brake, hydraulic oil temperature, battery, check engine, stop engine, coolant temperature, engine oil pressure, transmission temperature, outriggers, and optional 4-wheel drive.

Lighting Group:

Consists of two 12V lamps, with high and low beams for driving; integral tail, brake and turn signal lights and backup lights in rear; front turn signals and emergency flasher switch at operator's station. 12V horn actuated by button located on shifting control.

Back-Up Alarm:

Provides pulsating sound from a 97 dB alarm when ignition is on and transmission is in reverse. Conforms to SAE J994b.

Outrigger Alarm System:

112 dB alarm with alternating two-tone sound is actuated by a switch when the **OUTRIGGER DOWN** controls are operated.

Optional Electrical Accessories:**Strobe Lights:**

Two yellow strobe lights, one on each side of turret weight box, for high visibility all around crane. Flash 60-120 times per minute. Each strobe draws only one-half amp. Includes operator controlled switch.

Amber Rotating Beacons:

Amber rotating beacon mounted on each side of turret weight box. Net Weight: 10 lb (4.5 kg)

Boom Work Lights:

Two work lights, one on left side of boom to light boom tip, and one on right side of the turret to light ground under boom tip. Includes switch at operator's station. Net Weight: 10 lb 4.5 kg)

Work Light Rear:

Two work lights recessed into rear bumper. Provides lighted work area to rear of machine.

Hydraulic System:**Standard:**

Tandem pump, direct-driven by engine crankshaft, delivers 16 GPM (61 LPM) at 2,600 PSI (179 bar) and 32 GPM (121 LPM) at 2,500 PSI (172 bar) at 2,500 RPM governed engine speed. System protected by relief valves, suction line strainer and 10-micron full-flow return line filter. 25 gallon (94.6 L) reservoir equipped with filler cap and breather element.

Boom Assembly:**Standard:**

Three-section, high strength steel construction, equipped with bearing pads for efficient support and extension. Double-acting hydraulic cylinders extend boom sections. Telescope cylinder and the boom elevation cylinder are equipped with direct-connected holding valves. Boom angle indicator on side of boom.

Boom Rotation:**Standard:**

Heavy-duty bearing rotation gear with external teeth supports boom. Rotation is powered by hydraulic motor and worm gear drive. Rotation gearbox may be adjusted as wear occurs to minimize backlash. Boom is attached by high strength steel weldment.

Boom Hoist:**Standard:**

Turret-mounted, planetary gear hoist, is hydraulically powered to provide a bare-drum line pull of 10,000 lb (4,535 kg) at a speed of 110 ft (33.5 m) per minute. Hoist drum 9¾ in (24.8 cm) diameter by 13 in (33 cm) long. Provides even pull and long cable life. The hoist includes 125 ft (38.1 m) of 9/16-in (14.3 mm) wire rope.

Boom Attachments:**Standard:****Anti-Two-Block Device:**

Prevents damage to hoist rope and/or machine components from accidentally pulling sheave block or downhaul weight against boom tip. Consists of trip arm at boom tip which is moved upward by sheave block or downhaul weight as hook approaches boom tip. Trip arm actuates electric switch which is connected through cable reel mounted on turret to solenoid dump valve in the hydraulic circuit. This valve will dump the **HOIST RAISE, TELESCOPE EXTEND, BOOM LOWER, SWING LEFT** and **SWING RIGHT** circuits. No other circuits are affected. These circuits are returned to normal operation by operating the **HOIST LOWER** or **TELESCOPE RETRACT** control.

Rated Capacity Limiter:

Warns operator of impending overload with audible and visual signals. Has read-outs for load, boom angle, boom length and load radius. Prevents overload by dumping boom functions that cause overload: **HOIST RAISE, TELESCOPE EXTEND, BOOM LOWER, SWING LEFT** and **SWING RIGHT**. These circuits are returned to normal by lowering load to a safe resting place with hoist or by retracting or raising boom to a shorter load radius. There is also an override switch under the dashboard.

Sheave Block and Downhaul Weight:

A 124-lb (56 kg) sheave block is provided for two-part line requirements. Block is shorter than normal, 21½ in (54.6 cm) from top to saddle of load hook. 10 in (25.4 cm) O.D. sheave for 9/16 in (14.3 mm) rope. Has swivel hook with safety latch. A 90 lb (40 kg) downhaul weight and swivel hook are also provided for single-part line.

Optional Boom Attachments:**Boom Extension - 10 Ft (3.09 m):**

Provides 10 ft (3.09 m) of additional length for lifting loads with load line. Boom extension may be stowed alongside base boom section when not in use. Tip sheave, attaching brackets and pins included. Deduct 100 lb (45 kg) from Capacity Chart when boom extension is in the stowed position. Includes switch for Anti-Two-Block. Net Weight: 300 lb (135 kg)

Boom Extension - 10 Ft (3.09 m) Offset:

Has three settings: 0 degrees (in-line), 15 degrees offset and 30 degrees offset. Net Weight: 350 lb (160 kg)

Searcher Hook - Nose Mount:

5,000 lb (2,267 kg) capacity. Swivel hook with spring latch hangs from support structure projecting outward from boom tip. Net Weight: 41 lb (18.6 kg)

Should you require an option or special equipment not listed please consult your dealer salesperson or BMC®.

BRODERSON
Manufacturing Corp.
14741 West 106th Street
Lenexa, KS 66215 USA

Tel (913) 888-0606
Fax (913) 888-8431
www.bmccranes.com

Dimensions and values shown are
for reference purposes only.
Specifications subject to change.



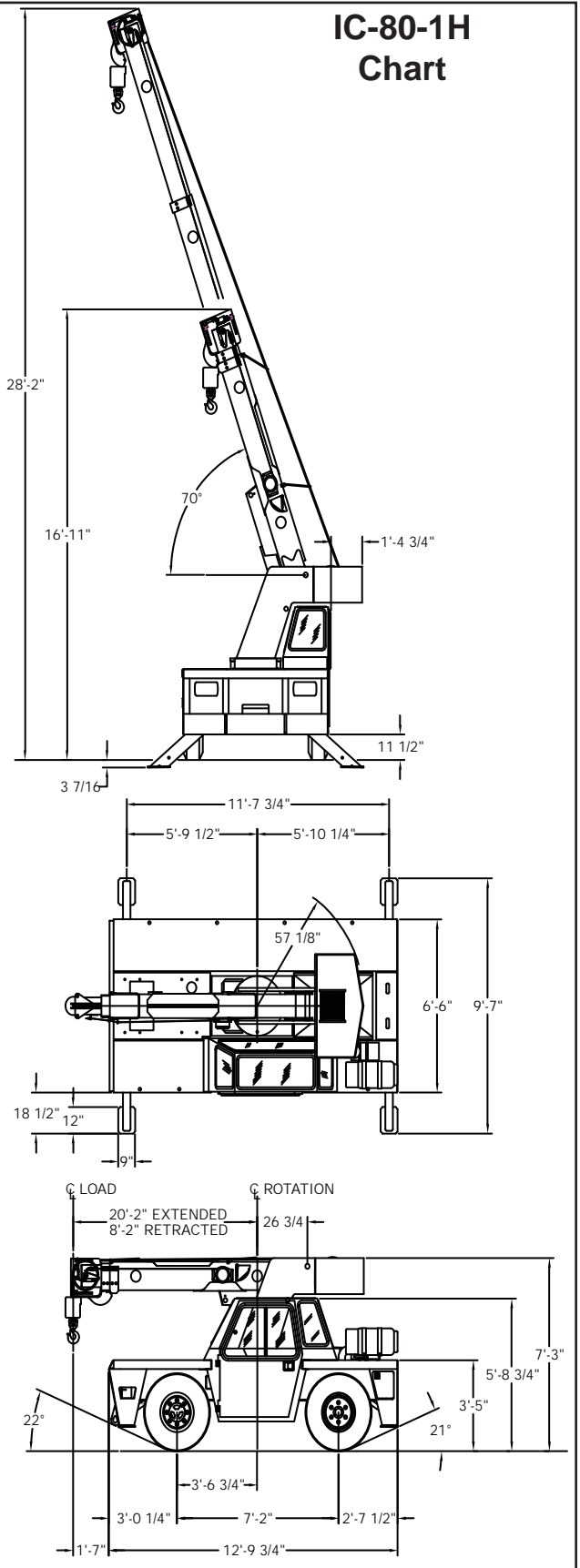
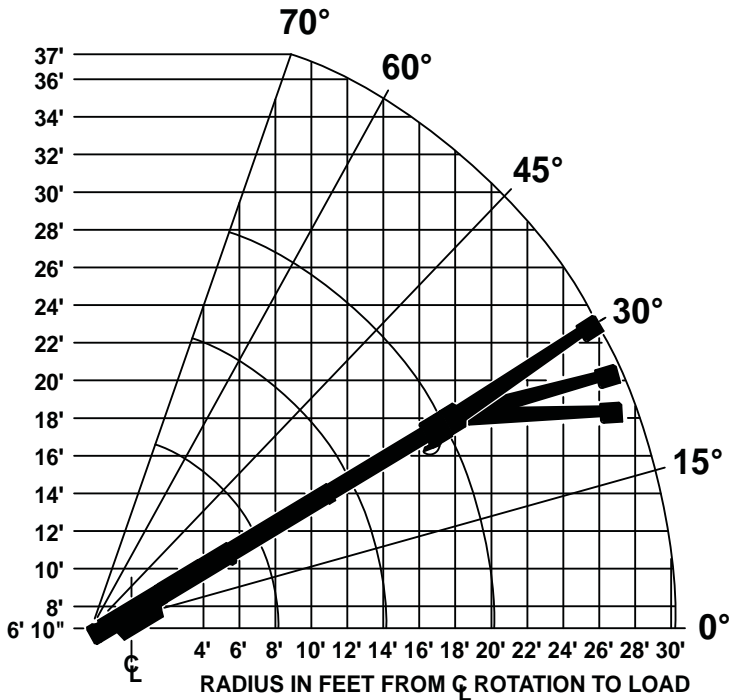
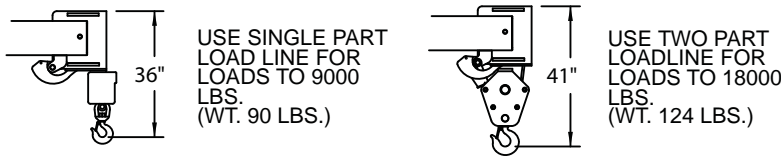
| CAPACITIES APPLY TO OPERATION ON FIRM LEVEL SURFACE | | | | | | |
|---|---|---------------|------------|---------------|-------|------|
| LOAD RADIUS FEET | MAIN BOOM OR EXTENSION CAPACITIES IN POUNDS | | | | | |
| | 360° ROTATION | | OVER FRONT | | | |
| | ON RUBBER | ON OUTRIGGERS | ON RUBBER | ON OUTRIGGERS | | |
| MAIN BOOM | 5 | 9600 | 17000 | 11700 | 18000 | |
| | 6 | 7900 | 14500 | 10400 | 14500 | |
| | 8 | 5750 | 10250 | 8400 | 10250 | |
| | 10 | 4150 | 7700 | 6300 | 7700 | |
| | 12 | 3100 | 6550 | 4650 | 6550 | |
| | 14 | 2425 | 5550 | 3750 | 5550 | |
| | 16 | 2000 | 4650 | 3100 | 4650 | |
| | 18 | 1700 | 4100 | 2650 | 4150 | |
| | 20 | 1450 | 3550 | 2300 | 3800 | |
| | 22 | 1275 | 3000 | 2000 | 3000 | |
| 10' BOOM EXT. | 24 | 1075 | 2800 | 1725 | 2800 | |
| | 26 | 925 | 2500 | 1500 | 2600 | |
| | 28 | 775 | 2200 | 1300 | 2400 | |
| | 30 | 675 | 2000 | 1150 | 2250 | |
| | BOOM EXTENSION - STRAIGHT OR OFFSET | | | | | |
| | MAIN BOOM ANGLE | | | | | |
| | ANGLE | 0° | 30° | 45° | 60° | 70° |
| | * † 0° | 2250 | 2600 | 3200 | 5000 | 7000 |
| | † 15° | --- | 2400 | 2700 | 3500 | 4200 |
| | † 30° | --- | 2250 | 2500 | 3000 | 3300 |

* USE 0° FOR STRAIGHT BOOM EXTENSION.
† USE 0°, 15° OR 30° FOR OFFSET BOOM EXTENSION.

CAUTION BOOM EXTENSION LOADS MUST NOT EXCEED MAIN BOOM CAPACITY.
DO NOT PICK & CARRY WITH LOADS ON BOOM EXTENSION.

CAPACITIES ON OUTRIGGERS ARE 85% OF TIPPING LOADS. CAPACITIES ON RUBBER ARE 75% OF TIPPING LOADS. CAPACITIES BELOW BOLD LINE ARE LIMITED BY TIPPING. OTHER CAPACITIES ARE LIMITED BY STRUCTURAL OR HYDRAULIC CAPABILITY.

BOOM EXTENSION DEDUCT: 100 LBS WHEN STOWED ON BASE BOOM.



CAPACITIES APPLY TO OPERATION ON FIRM LEVEL SURFACE

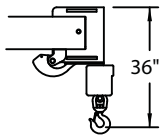
| LOAD RADIUS FEET | MAIN BOOM OR EXTENSION CAPACITIES IN POUNDS | | | | | |
|---------------------|--|---------------|------------|---------------|------|------|
| | 360° ROTATION | | OVER FRONT | | | |
| | ON RUBBER | ON OUTRIGGERS | ON RUBBER | ON OUTRIGGERS | | |
| 5 | 9500 | 17000 | 11600 | 18000 | | |
| 6 | 7800 | 14500 | 10200 | 14500 | | |
| 8 | 5650 | 10250 | 8250 | 10250 | | |
| 10 | 4000 | 7700 | 6200 | 7700 | | |
| 12 | 3000 | 6550 | 4650 | 6550 | | |
| 14 | 2350 | 5550 | 3650 | 5550 | | |
| 16 | 1900 | 4550 | 2950 | 4550 | | |
| 18 | 1600 | 3950 | 2500 | 4050 | | |
| 20 | 1350 | 3350 | 2150 | 3650 | | |
| 22 | 1150 | 2950 | 1850 | 3300 | | |
| 24 | 1000 | 2550 | 1650 | 3100 | | |
| 26 | 850 | 2450 | 1450 | 2750 | | |
| 28 | 725 | 2175 | 1275 | 2500 | | |
| 30 | 625 | 1900 | 1125 | 2300 | | |
| 32 | 525 | 1725 | 1000 | 2100 | | |
| 34 | 425 | 1500 | 900 | 1950 | | |
| 10' BOOM EXT. | 10-FOOT BOOM EXTENSION - STRAIGHT OR OFFSET | | | | | |
| | MAIN BOOM ANGLE | | | | | |
| | ANGLE | 0° | 30° | 45° | 60° | 70° |
| | *† 0° | 2250 | 2600 | 3200 | 5000 | 7000 |
| | †15° | --- | 2400 | 2700 | 3500 | 4200 |
| †30° | --- | 2250 | 2500 | 3000 | 3300 | |

* USE 0° FOR STRAIGHT BOOM EXTENSION.
† USE 0°, 15° OR 30° FOR OFFSET BOOM EXTENSION.

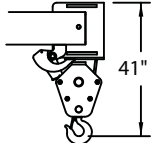
CAUTION BOOM EXTENSION LOADS MUST NOT EXCEED MAIN BOOM CAPACITY.
DO NOT PICK & CARRY WITH LOADS ON BOOM EXTENSION.

CAPACITIES ON OUTRIGGERS ARE 85% OF TIPPING LOADS. CAPACITIES ON RUBBER ARE 75% OF TIPPING LOADS. CAPACITIES BELOW BOLD LINE ARE LIMITED BY TIPPING. OTHER CAPACITIES ARE LIMITED BY STRUCTURAL OR HYDRAULIC CAPABILITY.

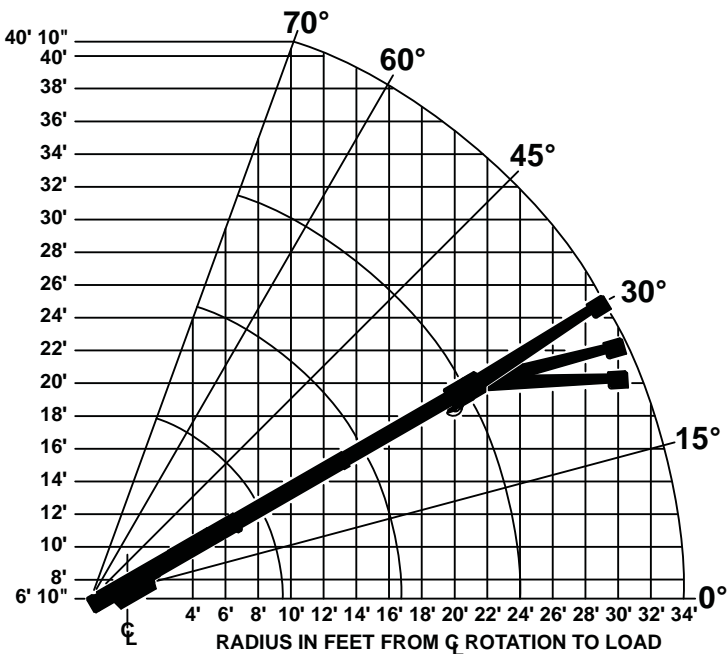
BOOM EXTENSION DEDUCT: 100 LBS WHEN STOWED ON BASE BOOM.



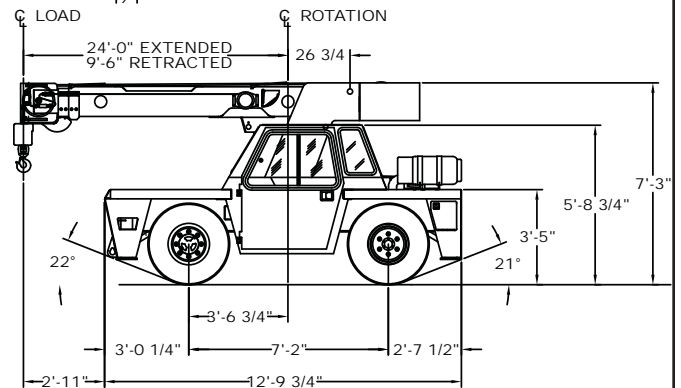
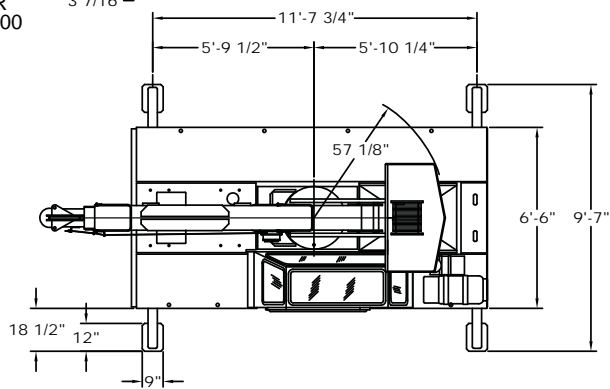
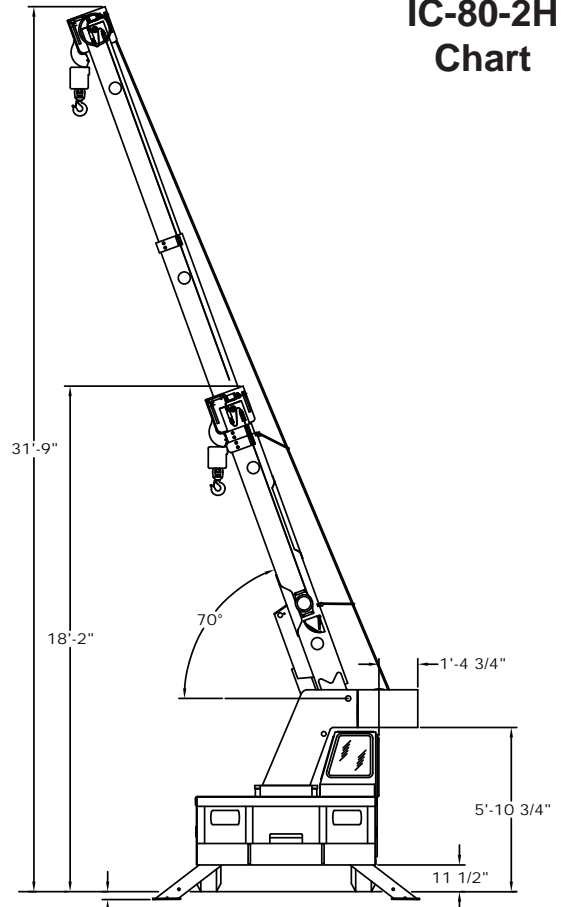
USE SINGLE PART LOAD LINE FOR LOADS TO 9000 LBS. (WT. 90 LBS.)



USE TWO PART LOADLINE FOR LOADS TO 18000 LBS. (WT. 124 LBS.)



IC-80-2H
Chart



CAPACITIES APPLY TO OPERATION ON FIRM LEVEL SURFACE

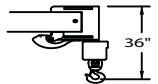
| LOAD RADIUS FEET | MAIN BOOM OR EXTENSION CAPACITIES IN POUNDS | | | | |
|--|---|---------------|------------|---------------|------|
| | 360° ROTATION | | OVER FRONT | | |
| | ON RUBBER | ON OUTRIGGERS | ON RUBBER | ON OUTRIGGERS | |
| 5 | 9400 | 17000 | 11400 | 18000 | |
| 6 | 7550 | 14000 | 10000 | 14000 | |
| 8 | 5600 | 10000 | 8100 | 10000 | |
| 10 | 4300 | 7700 | 6100 | 7700 | |
| 12 | 3200 | 6100 | 4450 | 6100 | |
| 14 | 2550 | 5200 | 3400 | 5200 | |
| 16 | 2050 | 4400 | 2700 | 4400 | |
| 18 | 1650 | 3900 | 2200 | 3900 | |
| 20 | 1350 | 3400 | 1800 | 3400 | |
| 22 | 1150 | 3050 | 1550 | 3050 | |
| 24 | 1000 | 2750 | 1350 | 2800 | |
| 26 | 850 | 2450 | 1200 | 2550 | |
| 28 | 750 | 2200 | 1100 | 2350 | |
| 30 | 650 | 1950 | 1000 | 2150 | |
| 32 | 450 | 1750 | 900 | 1950 | |
| 34 | 350 | 1600 | 800 | 1800 | |
| 36 | 250 | 1450 | 700 | 1650 | |
| 38 | 200 | 1300 | 600 | 1500 | |
| 40 | 150 | 1150 | 500 | 1400 | |
| 10-FOOT BOOM EXTENSION - STRAIGHT OR OFFSET | | | | | |
| MAIN BOOM ANGLE | | | | | |
| EXTENSION ANGLE | 0° | 30° | 45° | 60° | 70° |
| *† 0° | 2250 | 2600 | 3200 | 5000 | 7000 |
| † 15° | --- | 2400 | 2700 | 3500 | 4200 |
| † 30° | --- | 2250 | 2500 | 3000 | 3300 |

* USE 0° FOR STRAIGHT BOOM EXTENSION.
† USE 0°, 15° OR 30° FOR OFFSET BOOM EXTENSION.

CAUTION BOOM EXTENSION LOADS MUST NOT EXCEED MAIN BOOM CAPACITY. DO NOT PICK & CARRY WITH LOADS ON BOOM EXTENSION.

CAPACITIES ON OUTRIGGERS ARE 85% OF TIPPING LOADS. CAPACITIES ON RUBBER ARE 75% OF TIPPING LOADS. CAPACITIES BELOW BOLD LINE ARE LIMITED BY TIPPING. OTHER CAPACITIES ARE LIMITED BY STRUCTURAL OR HYDRAULIC CAPABILITY.

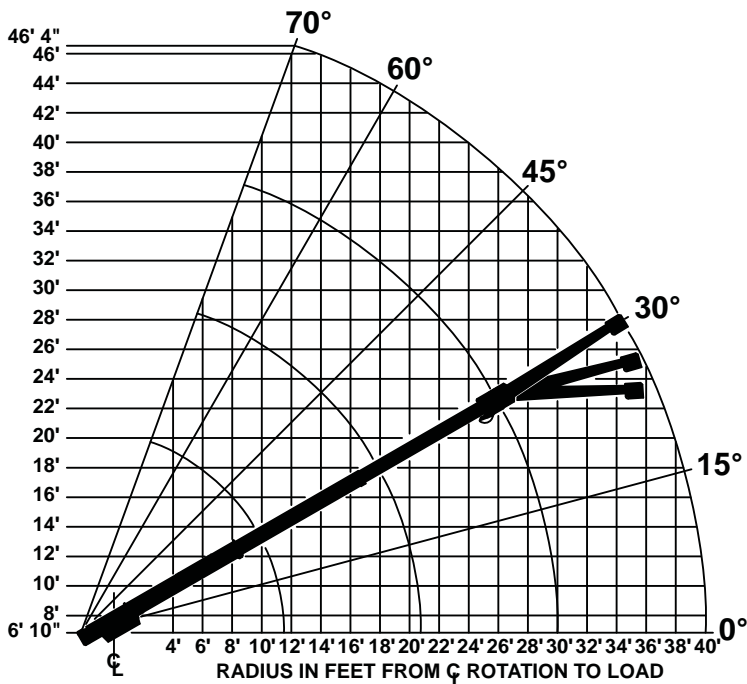
BOOM EXTENSION DEDUCT: 100 LBS WHEN STOWED ON BASE BOOM.



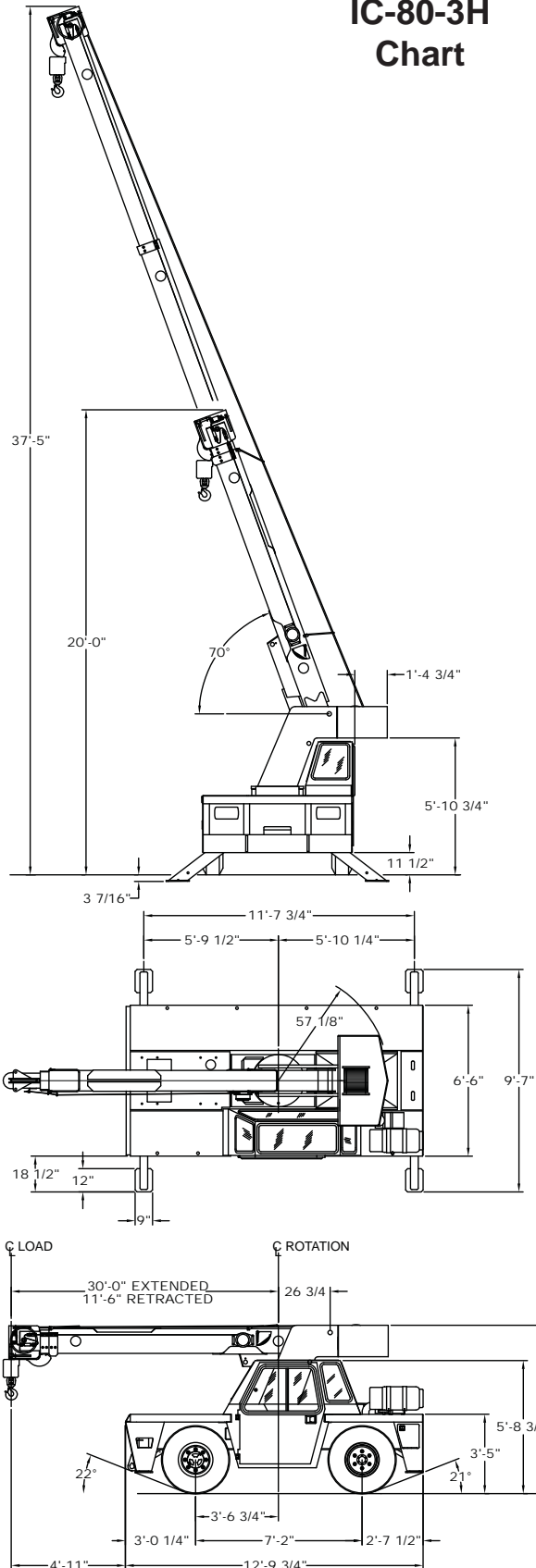
USE SINGLE PART LOAD LINE FOR LOADS TO 9000 LBS. (WT. 90 LBS.)



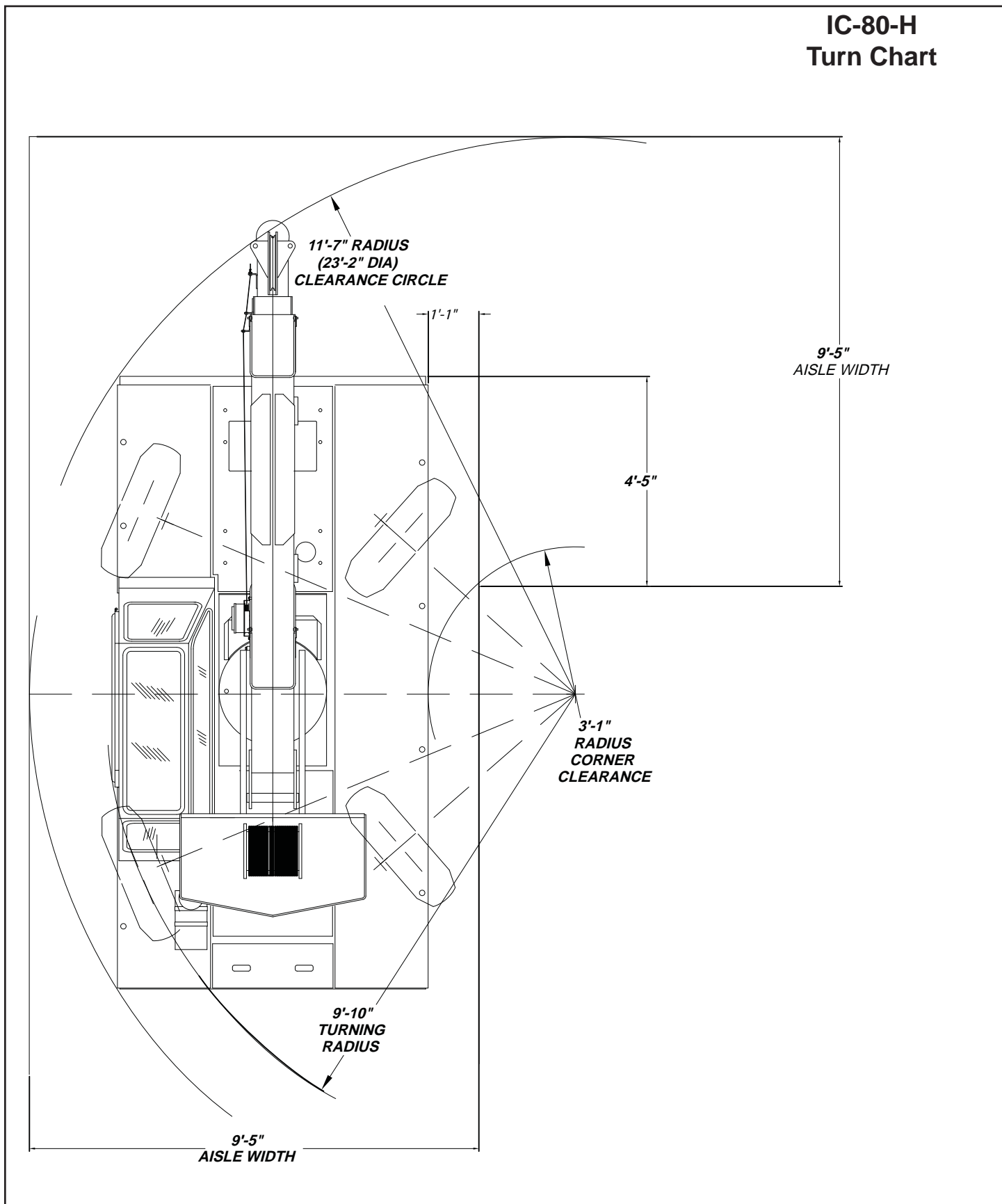
USE TWO PART LOAD LINE FOR LOADS TO 18000 LBS. (WT. 124 LBS.)



IC-80-3H
Chart



IC-80-H
Turn Chart



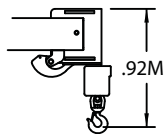
| CAPACITIES APPLY TO OPERATION ON FIRM LEVEL SURFACE | | | | |
|---|--|---------------|------------|---------------|
| LOAD RADIUS METERS | MAIN BOOM OR EXTENSION CAPACITIES IN KILOGRAMS | | | |
| | 360° ROTATION | | OVER FRONT | |
| | ON RUBBER | ON OUTRIGGERS | ON RUBBER | ON OUTRIGGERS |
| 1.5 | 4350 | 7710 | 5300 | 8160 |
| 2.0 | 3290 | 5980 | 4460 | 5980 |
| 2.5 | 2520 | 4480 | 3710 | 4480 |
| 3.0 | 1920 | 3540 | 2930 | 3540 |
| 3.5 | 1500 | 3090 | 2260 | 3090 |
| 4.0 | 1210 | 2710 | 1850 | 2710 |
| 4.5 | 1010 | 2350 | 1580 | 2350 |
| 5.0 | 870 | 2050 | 1360 | 2050 |
| 5.5 | 760 | 1850 | 1190 | 1870 |
| 6.0 | 670 | 1640 | 1060 | 1750 |
| 6.5 | 600 | 1390 | 950 | 1390 |
| 7.0 | 530 | 1310 | 840 | 1310 |
| 8.0 | 410 | 1110 | 660 | 1160 |
| 9.1 | 300 | 900 | 520 | 1020 |
| 3 M BOOM EXTENSION | 3 METER BOOM EXTENSION - STRAIGHT OR OFFSET | | | |
| | MAIN BOOM ANGLE | | | |
| | 0° | 30° | 45° | 70° |
| | 1020 | 1180 | 1450 | 2260 |
| 15° | 1090 | 1220 | 1580 | |
| 30° | 1020 | 1130 | 1360 | |

* USE 0° FOR STRAIGHT BOOM EXTENSION.
† USE 0°, 15° OR 30° FOR OFFSET BOOM EXTENSION.

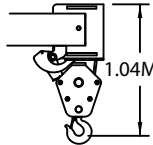
CAUTION BOOM EXTENSION LOADS MUST NOT EXCEED MAIN BOOM CAPACITY.
DO NOT PICK & CARRY WITH LOADS ON BOOM EXTENSION.

CAPACITIES ON OUTRIGGERS ARE 85% OF TIPPING LOADS. CAPACITIES ON RUBBER ARE 75% OF TIPPING LOADS. CAPACITIES BELOW BOLD LINE ARE LIMITED BY TIPPING. OTHER CAPACITIES ARE LIMITED BY STRUCTURAL OR HYDRAULIC CAPABILITY.

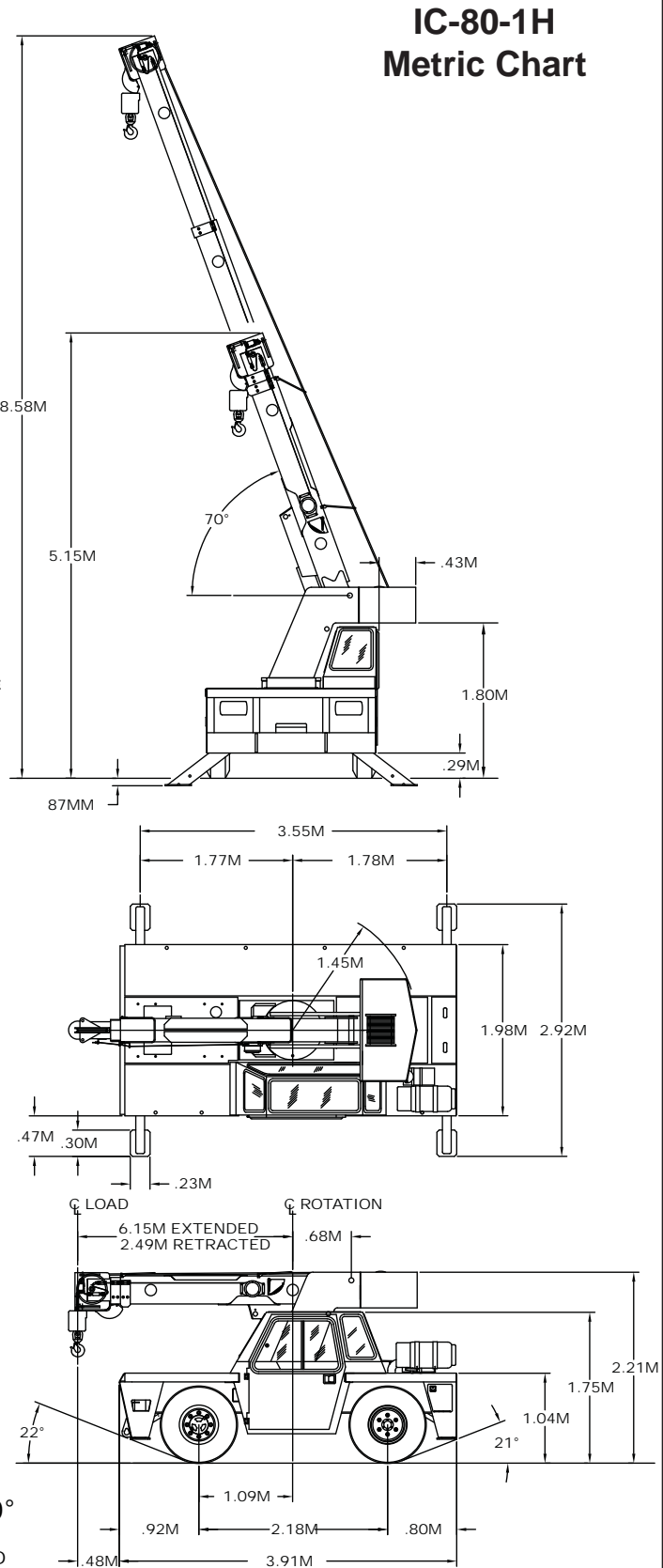
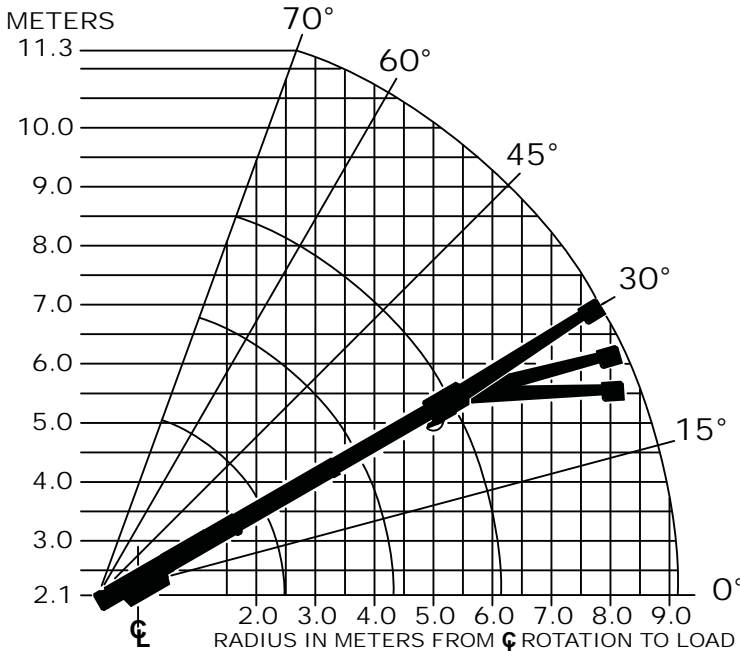
BOOM EXTENSION DEDUCT: 45 KGS WHEN STOWED ON BASE BOOM.



USE SINGLE PART LOAD LINE FOR LOADS TO 4090 KGS. (WT. 40 KGS.)



USE TWO PART LOADLINE FOR LOADS TO 8180 KGS. (WT. 56 KGS.)



CAPACITIES APPLY TO OPERATION ON FIRM LEVEL SURFACE

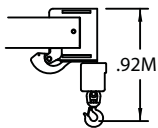
| LOAD RADIUS METERS | MAIN BOOM OR EXTENSION CAPACITIES IN KILOGRAMS | | | | | |
|--------------------|--|---------------|------------|---------------|------|------|
| | 360° ROTATION | | OVER FRONT | | | |
| | ON RUBBER | ON OUTRIGGERS | ON RUBBER | ON OUTRIGGERS | | |
| 1.5 | 4310 | 7710 | 5260 | 8160 | | |
| 2.0 | 3250 | 6020 | 4380 | 5990 | | |
| 2.5 | 2480 | 4480 | 3640 | 4500 | | |
| 3.0 | 1860 | 3540 | 2870 | 3540 | | |
| 3.5 | 1460 | 3090 | 2260 | 3090 | | |
| 4.0 | 1170 | 2720 | 1830 | 2720 | | |
| 4.5 | 980 | 2340 | 1520 | 2340 | | |
| 5.0 | 830 | 2010 | 1290 | 2000 | | |
| 5.5 | 720 | 1780 | 1130 | 1830 | | |
| 6.0 | 630 | 1560 | 1000 | 1680 | | |
| 6.5 | 550 | 1400 | 880 | 1550 | | |
| 7.3 | 450 | 1150 | 750 | 1400 | | |
| 8.0 | 380 | 1100 | 650 | 1230 | | |
| 9.0 | 290 | 890 | 530 | 1060 | | |
| 10.0 | 220 | 740 | 430 | 920 | | |
| 10.4 | 190 | 680 | 410 | 880 | | |
| 3 M BOOM EXT. | 3 METER BOOM EXTENSION - STRAIGHT OR OFFSET | | | | | |
| | MAIN BOOM ANGLE | | | | | |
| | ANGLE | 0° | 30° | 45° | 60° | 70° |
| | *† 0° | 1020 | 1180 | 1450 | 2260 | 3170 |
| | † 15° | --- | 1090 | 1220 | 1580 | 1900 |
| † 30° | --- | 1020 | 1130 | 1360 | 1490 | |

* USE 0° FOR STRAIGHT BOOM EXTENSION.
† USE 0°, 15° OR 30° FOR OFFSET BOOM EXTENSION.

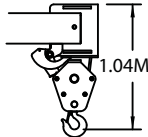
CAUTION BOOM EXTENSION LOADS MUST NOT EXCEED MAIN BOOM CAPACITY. DO NOT PICK & CARRY WITH LOADS ON BOOM EXTENSION.

CAPACITIES ON OUTRIGGERS ARE 85% OF TIPPING LOADS. CAPACITIES ON RUBBER ARE 75% OF TIPPING LOADS. CAPACITIES BELOW BOLD LINE ARE LIMITED BY TIPPING. OTHER CAPACITIES ARE LIMITED BY STRUCTURAL OR HYDRAULIC CAPABILITY.

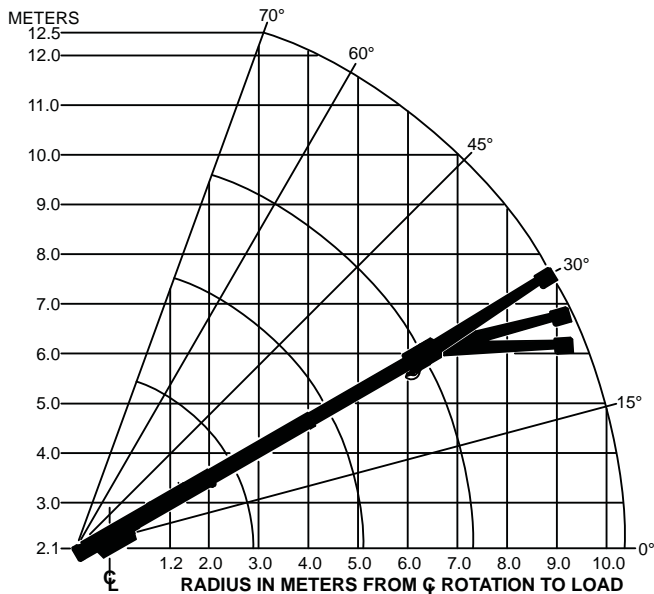
BOOM EXTENSION DEDUCT: 45 KGS WHEN STOWED ON BASE BOOM.



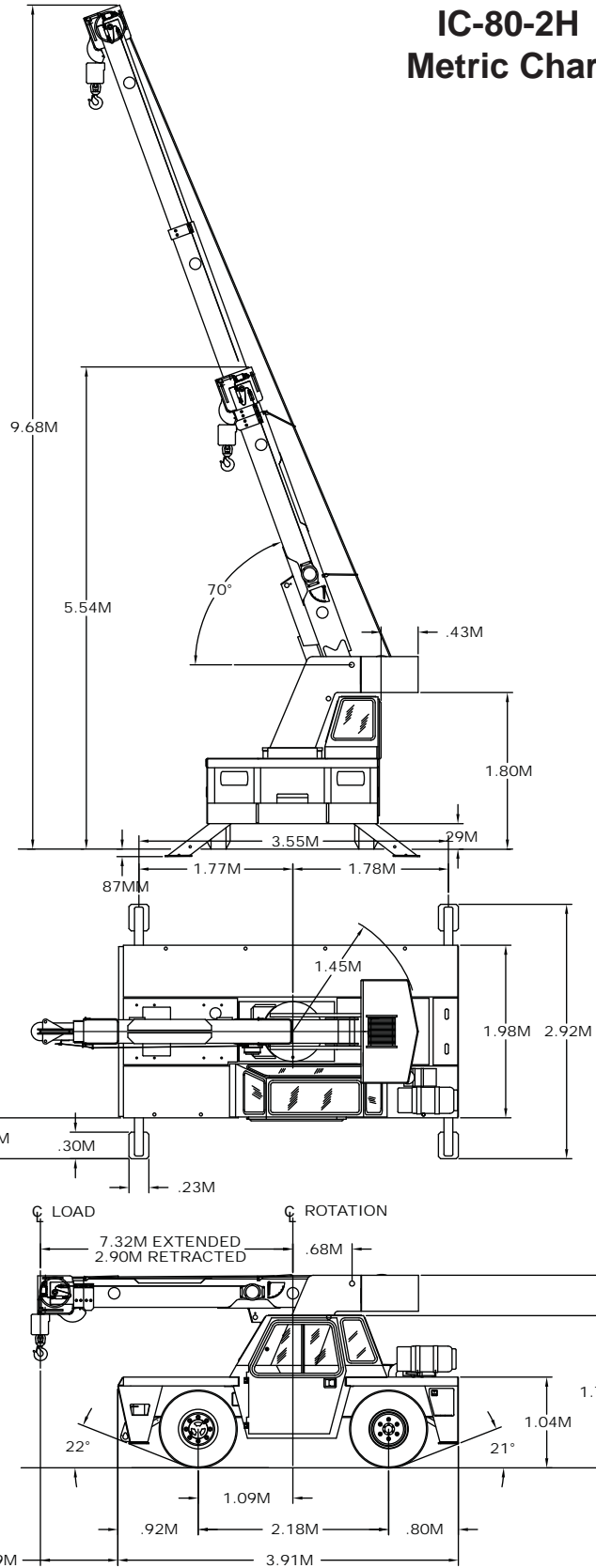
USE SINGLE PART LOAD LINE FOR LOADS TO 4090 KGS. (WT. 40 KGS.)



USE TWO PART LOADLINE FOR LOADS TO 8180 KGS. (WT. 56 KGS.)



IC-80-2H
Metric Chart



CAPACITIES APPLY TO OPERATION ON FIRM LEVEL SURFACE

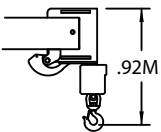
| LOAD RADIUS METERS | 360° ROTATION OVER FRONT | | | | |
|-----------------------------------|---|---------------|------------|---------------|------|
| | MAIN BOOM OR EXTENSION CAPACITIES IN KILOGRAMS | | OVER FRONT | | |
| | ON RUBBER | ON OUTRIGGERS | ON RUBBER | ON OUTRIGGERS | |
| 1.5 | 4260 | 7710 | 5170 | 8160 | |
| 2.0 | 3140 | 5790 | 4290 | 5790 | |
| 2.5 | 2470 | 4400 | 3580 | 4400 | |
| 3.0 | 1990 | 3560 | 2830 | 3560 | |
| 3.5 | 1560 | 2910 | 2180 | 2910 | |
| 4.0 | 1270 | 2520 | 1720 | 2520 | |
| 4.5 | 1060 | 2210 | 1400 | 2210 | |
| 5.0 | 890 | 1950 | 1170 | 1950 | |
| 5.5 | 740 | 1760 | 990 | 1760 | |
| 6.0 | 630 | 1570 | 840 | 1570 | |
| 6.5 | 540 | 1430 | 730 | 1430 | |
| 7.0 | 480 | 1330 | 650 | 1330 | |
| 7.5 | 430 | 1200 | 580 | 1230 | |
| 8.0 | 380 | 1090 | 530 | 1140 | |
| 8.5 | 340 | 1000 | 500 | 1070 | |
| 9.0 | 290 | 910 | 460 | 990 | |
| 10.0 | 180 | 760 | 390 | 850 | |
| 11.0 | 110 | 650 | 310 | 740 | |
| 12.2 | 60 | 520 | 220 | 630 | |
| 3M BOOM EXT. BOOM EXTENSION ANGLE | 3-METER BOOM EXTENSION - STRAIGHT OR OFFSET MAIN BOOM ANGLE | | | | |
| | 0° | 30° | 45° | 60° | 70° |
| | *† 0° | 1020 | 1180 | 1450 | 2260 |
| † 15° | -- | 1090 | 1220 | 1580 | 1900 |
| † 30° | -- | 1020 | 1130 | 1360 | 1490 |

* USE 0° FOR STRAIGHT BOOM EXTENSION.
† USE 0°, 15° OR 30° FOR OFFSET BOOM EXTENSION.

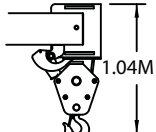
CAUTION BOOM EXTENSION LOADS MUST NOT EXCEED MAIN BOOM CAPACITY. DO NOT PICK & CARRY WITH LOADS ON BOOM EXTENSION.

CAPACITIES ON OUTRIGGERS ARE 85% OF TIPPING LOADS. CAPACITIES ON RUBBER ARE 75% OF TIPPING LOADS. CAPACITIES BELOW BOLD LINE ARE LIMITED BY TIPPING. OTHER CAPACITIES ARE LIMITED BY STRUCTURAL OR HYDRAULIC CAPABILITY.

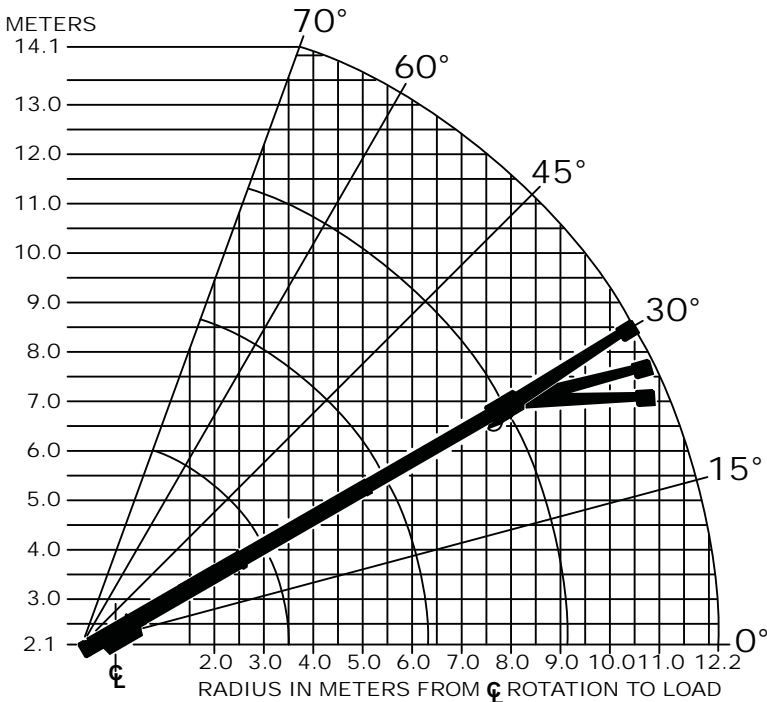
BOOM EXTENSION DEDUCT: 45 KGS WHEN STOWED ON BASE BOOM.



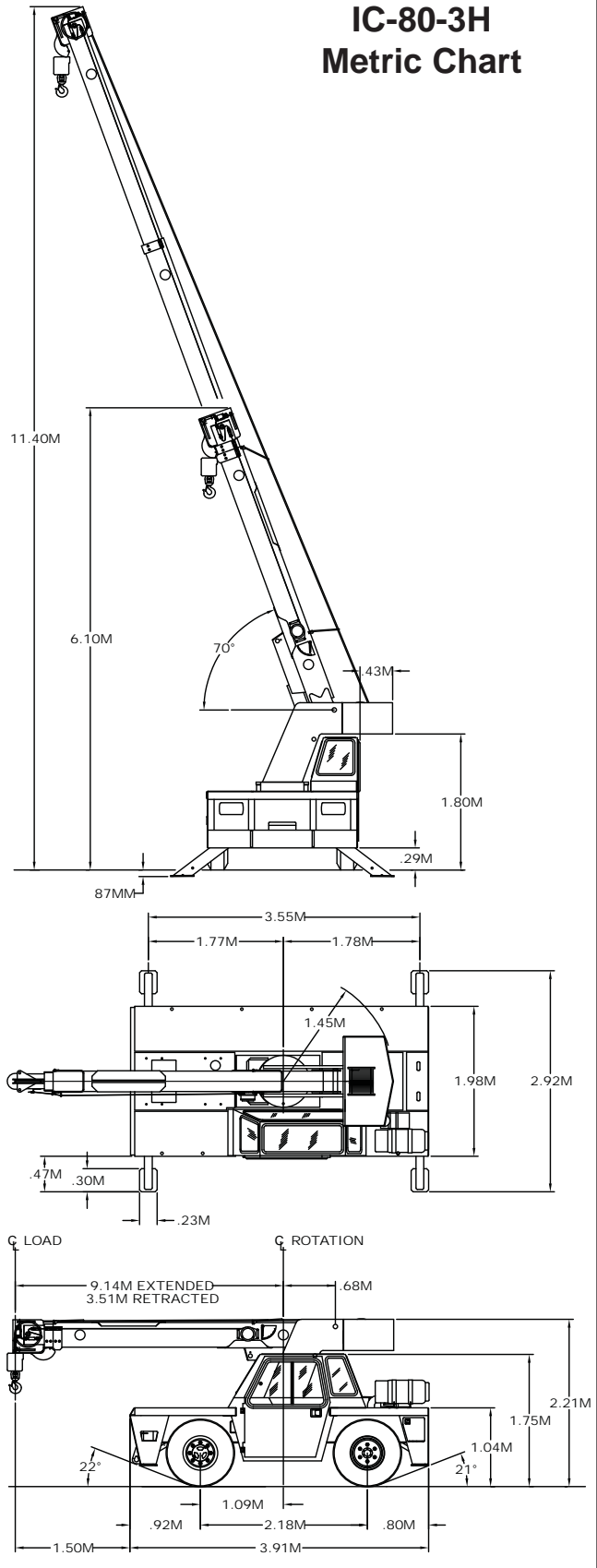
USE SINGLE PART LOAD LINE FOR LOADS TO 4090 KGS. (WT. 40 KGS.)



USE TWO PART LOADLINE FOR LOADS TO 8180 KGS. (WT. 56 KGS.)



IC-80-3H
Metric Chart



IC-80-H
Metric Turn Chart

