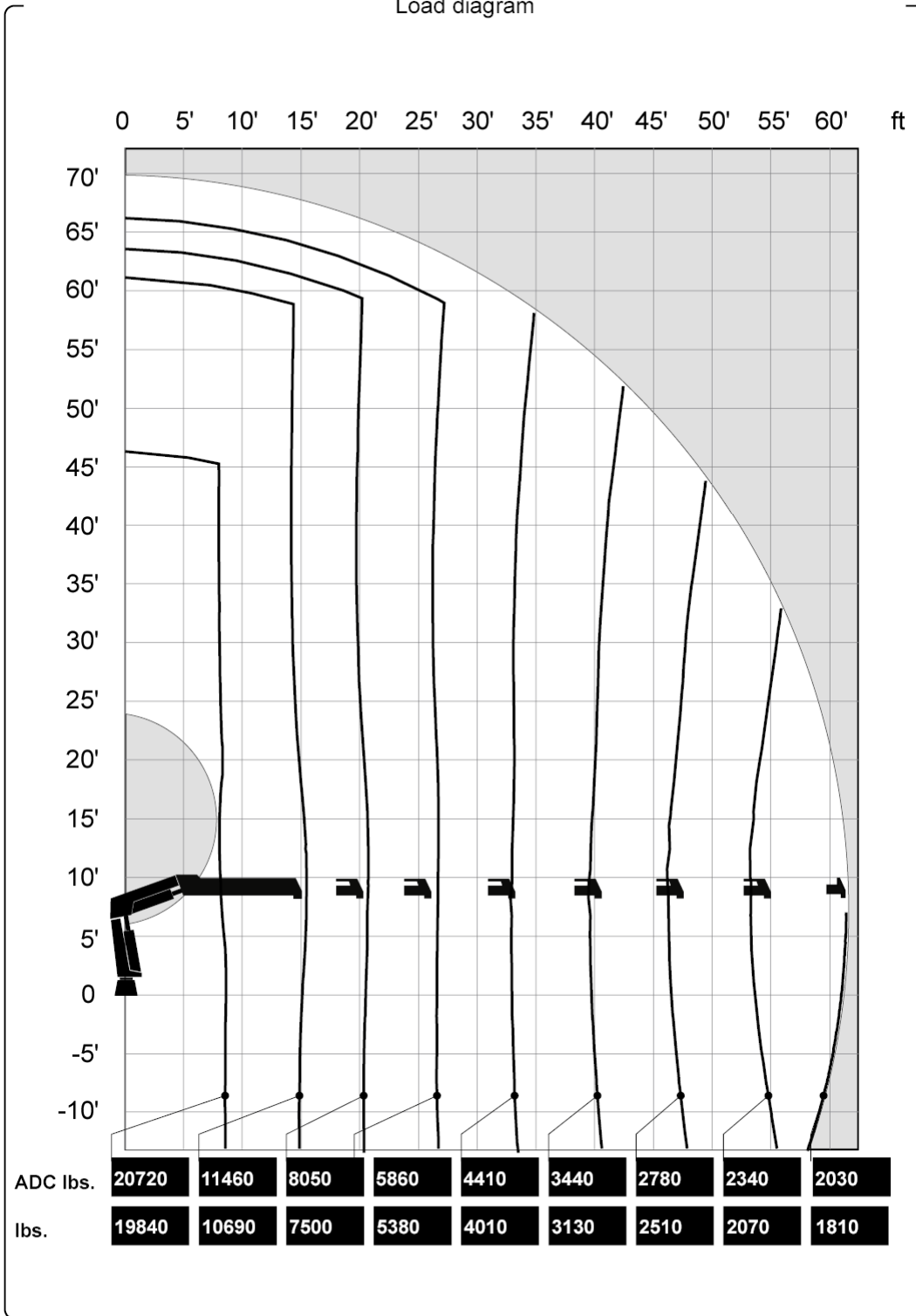


## Technical Data

# Hiab 288 E-7 HiPro

Version		HIAB 288 E-7 HiPro
Lifting capacity (ADC)	ft-lbs	178 500
Outreach - lifting capacity, standard	ft-lbs.	8' 2" - 20 720
		15' 5" - 11 460
		20' 8" - 8 050
		26' 7" - 5 860
		32' 10" - 4 410
		39' 4" - 3 440
		46' 3" - 2 780
		53' 6" - 2 340
61' 0" - 2 030		
Outreach - lifting capacity, manual extensions	ft-lbs.	65' 11" - 1 720
		70' 10" - 1 500
Hydraulic outreach, standard	ft	61' 0"
Outreach, manual extensions	ft	71' 2"
Lifting height above installation level, hydr/man	ft	69' 7" / 79' 5"
Rec. oil flow	gallon/min	17 - 32
Working pressure	psi	4 930
Oil in tank	gallon	0 - 53
Slewing angle	∅	190 - 420
Max slope viable at full capacity	°	5
Lifting speed at standard hydraulic outreach	ft/s	7' 10"
Height in folded position	"	92
Width in folded position	"	98
Install space required. Rotation area not included	"	46
Install space required with hose and pipe kit	"	46
<b>Weight</b>		
Crane in standard version without support legs	lbs.	8 000
Support leg equipment	lbs.	840 - 1 050
<b>Data sheet</b>		
		HIAB 288 E-7 HiPro

Load diagram



Side view unfolded stretched

