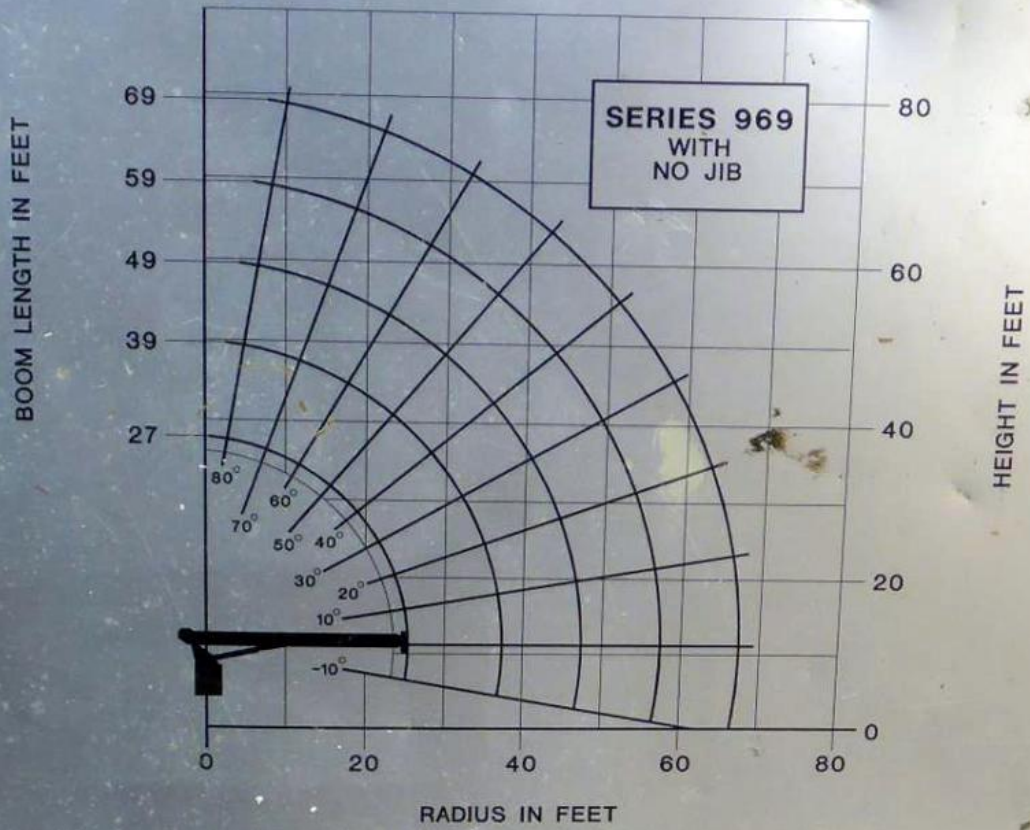


# NATIONAL CRANE CORPORATION



## LOAD RATINGS

LOAD RADIUS (FEET)	LOADED BOOM ANGLE	27FT BOOM (LBS)	LOADED BOOM ANGLE	39FT BOOM (LBS)	LOADED BOOM ANGLE	49FT BOOM (LBS)	LOADED BOOM ANGLE	59FT BOOM (LBS)	LOADED BOOM ANGLE	69FT BOOM (LBS)
4.75	79.4	50,000								
5	79	46,000								
8	72	34,000								
10	67	28,000								
12	62	24,100	71½	22,000	76	20,800	79	19,500		
14	57	21,100	68½	19,300	73½	18,000	77	17,000	79½	16,300
16	51	18,700	65	17,100	71	16,000	75	15,000	77½	14,300
20	38	15,000	58½	14,000	68	13,000	70½	12,200	74	11,700
25			49	11,300	59	10,500	65	9,900	69½	9,500
30			37	9,200	52	8,800	59½	8,300	65	7,900
35			21	7,100	43½	7,500	53½	7,100	60	6,700
40					34	6,300	47	6,100	55	5,850
45					19	4,800	39½	5,300	49½	5,100
50							30½	4,500	43½	4,500
55							17	3,400	36½	3,900
60									28½	3,250
65									16	2,450

## LOADLINE EQUIPMENT DEDUCT

DOWNHAUL WEIGHT = 150  
 ONE SHEAVE BLOCK = 200  
 TWO SHEAVE BLOCK = 355  
 THREE SHEAVE BLOCK = 530