



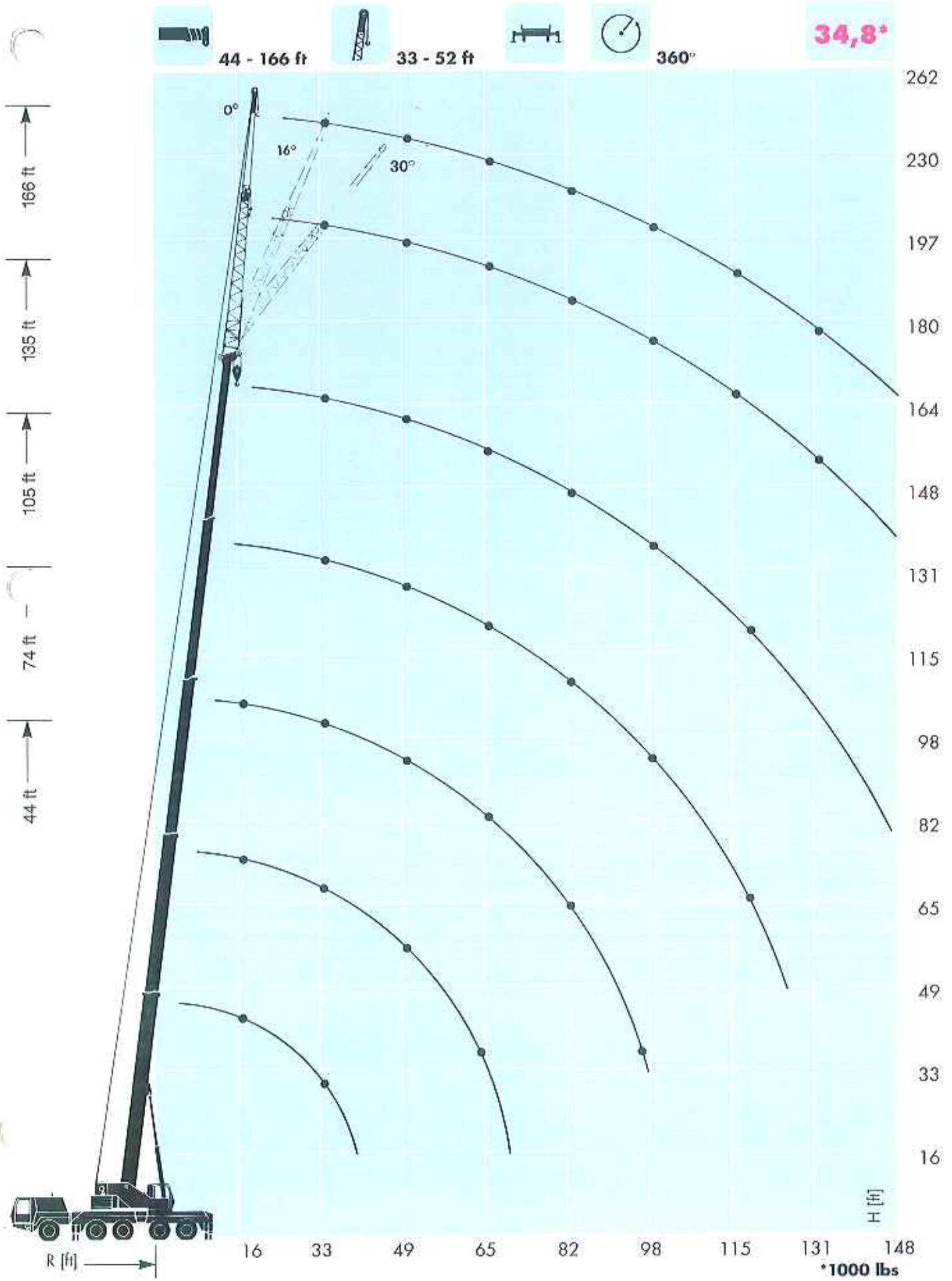
KRUPP

**125 ton Capacity
All-Terrain-Crane**



KMK 5125

Hook elevation diagram



Main Boom

Lifting Capacities in 1000 lbs



44 - 166 ft



360°

Counterweight **34,0** lbs

Radius	Boom length									
	44 ft*	74 ft	74 ft	88 ft	105 ft	105 ft	135 ft	135 ft	166 ft	ft
9	250.0									10
10	218.3	133.4	87.3							15
15	159.7	127.8	87.3	101.9						20
20	114.6	103.6	87.3	94.6	82.5	38.8				25
25	88.1	83.9	87.3	77.9	73.7	38.8	50.9	38.8		30
30	68.9	66.0	72.0	65.3	62.1	38.8	50.9	38.8	31.5	35
35		53.4	59.3	53.9	53.2	37.1	48.8	37.8	31.5	40
40		42.6	49.6	43.3	45.6	33.1	42.3	34.7	31.3	45
45		34.3	41.2	34.9	37.0	29.8	37.0	31.8	29.6	50
50		27.4	34.0	28.0	30.1	27.1	31.4	29.3	27.8	55
55		22.1	28.4	22.7	24.6	24.7	26.0	26.9	26.1	60
60				18.4	20.3	22.7	21.6	24.8	24.4	65
65				14.9	16.8	20.9	18.0	22.8	21.0	70
70				12.0	13.8	19.4	15.0	20.9	18.0	75
75					11.3	18.1	12.5	18.3	15.4	80
80					9.0	16.9	10.3	16.1	13.2	85
85					7.1	15.9	8.3	14.1	11.2	90
90					5.2	14.1	6.5	12.4	9.5	95
95							4.9	10.9	8.0	100
100							3.4	9.5	6.6	105
105							2.1	8.2	5.4	110
110								7.1	4.2	115
115								6.1	3.1	120
120									2.1	125
125									1.1	1. Tel.
1. Tel.	0.0	1.0	0.0	1.0	1.0	0.0	1.0	0.0	1.0	2. Tel.
2. Tel.	0.0	0.0	0.5	0.5	0.5	0.0	1.0	1.0	1.0	3. Tel.
3. Tel.	0.0	0.0	0.5	0.0	0.5	1.0	1.0	1.0	1.0	4. Tel.
4. Tel.	0.0	0.0	0.0	0.0	0.0	1.0	0.0	1.0	1.0	

* over rear

* 1000 lbs

Counterweight **22,0*** lbs

Radius	Boom length									
	44 ft*	74 ft	74 ft	88 ft	105 ft	105 ft	135 ft	135 ft	166 ft	ft
9	250.0									10
10	218.3	133.4	87.3							15
15	147.0	127.8	87.3	101.9						20
20	104.1	99.4	87.3	94.6	82.5	38.8				25
25	79.7	75.2	81.5	75.8	73.7	38.8	50.9	38.8		30
30	63.0	58.7	64.8	59.3	61.1	38.8	50.9	38.8	31.5	35
35		47.2	53.1	47.7	49.5	37.1	48.8	37.8	31.5	40
40		36.5	43.8	37.1	39.4	33.1	41.0	34.7	31.3	45
45		28.4	35.2	29.0	31.1	29.8	32.6	31.8	29.6	50
50		22.2	28.8	22.9	24.9	27.1	26.3	29.3	27.8	55
55		17.1	23.8	17.7	19.9	24.7	21.3	26.9	24.6	60
60				13.7	15.7	22.7	17.1	23.6	20.5	65
65				10.4	12.4	20.9	13.7	20.2	17.0	70
70				7.7	9.7	19.1	11.0	17.2	14.1	75
75					7.4	16.6	8.6	14.7	11.7	80
80					5.4	14.5	6.6	12.7	9.6	85
85					3.7	12.7	4.9	10.8	7.9	90
90						11.1	3.4	9.3	6.3	95
95								7.9	5.0	100
100								6.7	3.8	105
105								5.6	2.7	110
110								4.6		115
115								3.7		1. Tel.
1. Tel.	0.0	1.0	0.0	1.0	1.0	0.0	1.0	0.0	1.0	2. Tel.
2. Tel.	0.0	0.0	0.5	0.5	0.5	0.0	1.0	1.0	1.0	3. Tel.
3. Tel.	0.0	0.0	0.5	0.0	0.5	1.0	1.0	1.0	1.0	4. Tel.
4. Tel.	0.0	0.0	0.0	0.0	0.0	1.0	0.0	1.0	1.0	

* over rear

* 1000 lbs

Main Boom + swing-away extension

Lifting Capacities in 1000 lbs



33/52 ft



360°

Counterweight **34,8*** lbs

Radius	Main boom - 166 ft						ft
	33 ft/0°	33 ft/16°	33 ft/30°	52 ft/0°	52 ft/16°	52 ft/30°	
30	17.0			10.2			30
35	17.0			10.2			35
40	17.0	16.5		10.2			40
45	17.0	16.5	14.5	10.2			45
50	17.0	16.3	14.3	10.2	9.7		50
55	17.0	16.0	14.1	10.2	9.5		55
60	17.0	15.7	13.8	10.2	9.2	7.8	60
65	17.0	15.4	13.6	10.2	9.0	7.6	65
70	17.0	15.2	13.3	10.2	8.8	7.4	70
75	17.0	14.9	13.0	10.2	8.5	7.3	75
80	14.8	14.6	12.7	10.2	8.3	7.1	80
85	12.8	14.0	12.5	10.0	8.1	7.0	85
90	11.1	12.2	12.5	9.7	7.9	6.9	90
95	9.6	10.6	11.2	9.4	7.7	6.8	95
100	8.2	9.1	9.8	9.2	7.6	6.7	100
105	7.0	7.8	8.4	8.2	7.4	6.6	105
110	5.8	6.6	7.2	7.1	7.2	6.5	110
115	4.7	5.6	6.0	6.1	7.1	6.4	115
120	3.7	4.5	5.0	5.1	6.4	6.3	120
125	2.7	3.5	3.9	4.2	5.4	6.2	125
130	1.9	2.5	3.0	3.3	4.6	5.3	130
135		1.7	2.1	2.5	3.7	4.5	135
140			1.2	1.7	2.8	3.6	140
145					2.0	2.7	145
150					1.3	1.9	150
155						1.2	155
160							160
1. Tel.	1.0	1.0	1.0	1.0	1.0	1.0	1. Tel.
2. Tel.	1.0	1.0	1.0	1.0	1.0	1.0	2. Tel.
3. Tel.	1.0	1.0	1.0	1.0	1.0	1.0	3. Tel.
4. Tel.	1.0	1.0	1.0	1.0	1.0	1.0	4. Tel.

* 1000 lbs

Counterweight **22,0*** lbs

Radius	Main boom - 166 ft						ft
	33 ft/0°	33 ft/16°	33 ft/30°	52 ft/0°	52 ft/16°	52 ft/30°	
25							
30	17.0			10.2			30
35	17.0			10.2			35
40	17.0	16.5		10.2			40
45	17.0	16.5	14.5	10.2			45
50	17.0	16.3	14.3	10.2	9.7		50
55	17.0	16.0	14.1	10.2	9.5		55
60	17.0	15.7	13.8	10.2	9.2	7.8	60
65	17.0	15.4	13.6	10.2	9.0	7.6	65
70	16.0	15.2	13.3	10.2	8.8	7.4	70
75	13.5	14.9	13.0	10.2	8.5	7.3	75
80	11.4	12.7	12.7	10.2	8.3	7.1	80
85	9.6	10.8	11.6	10.0	8.1	7.0	85
90	8.0	9.1	9.9	9.4	7.9	6.9	90
95	6.7	7.6	8.3	8.0	7.7	6.8	95
100	5.4	6.3	7.0	6.7	7.6	6.7	100
105	4.3	5.2	5.8	5.6	7.1	6.6	105
110	3.4	4.1	4.7	4.6	6.0	6.5	110
115	2.3	3.2	3.7	3.7	5.0	5.9	115
120		2.3	2.8	2.9	4.1	4.9	120
125					3.3	4.0	125
130					2.5	3.2	130
135						2.5	135
140							140
145							145
150							150
1. Tel.	1.0	1.0	1.0	1.0	1.0	1.0	1. Tel.
2. Tel.	1.0	1.0	1.0	1.0	1.0	1.0	2. Tel.
3. Tel.	1.0	1.0	1.0	1.0	1.0	1.0	3. Tel.
4. Tel.	1.0	1.0	1.0	1.0	1.0	1.0	4. Tel.

* 1000 lbs

Main Boom + swing-away extension

Lifting Capacities in 1000 lbs



33/52 ft



360°

Counterweight **34,8*** lbs

Radius		Main boom - 135 ft						
ft	33 ft/0°	33 ft/16°	33 ft/30°	52 ft/0°	52 ft/16°	52 ft/30°	ft	
25	23.0						25	
30	23.0			13.1			30	
35	23.0	19.5		13.1			35	
40	23.0	18.9	15.7	13.1	10.7		40	
45	23.0	18.3	15.3	13.1	10.3		45	
50	22.4	17.7	14.9	12.7	9.9	8.2	50	
55	21.5	17.1	14.1	12.3	9.6	8.0	55	
60	20.6	16.6	13.8	11.8	9.2	7.8	60	
65	19.6	16.1	13.5	11.4	8.9	7.6	65	
70	18.1	15.5	13.3	10.9	8.7	7.4	70	
75	16.6	14.8	13.0	10.5	8.4	7.2	75	
80	15.1	14.1	12.8	10.1	8.2	7.0	80	
85	13.9	13.4	12.6	9.7	7.9	6.9	85	
90	13.0	12.8	12.3	9.4	7.7	6.8	90	
95	12.0	12.1	12.1	9.1	7.5	6.7	95	
100	11.1	11.4	11.6	8.7	7.3	6.5	100	
105	9.8	10.4	10.8	8.5	7.2	6.4	105	
110	8.7	9.2	9.6	8.2	7.0	6.3	110	
115	7.7	8.2	8.5	7.9	6.8	6.2	115	
120	6.7	7.2	7.4	7.7	6.7	6.2	120	
125	5.9	6.3	6.5	7.0	6.6	6.1	125	
130	5.1	5.4	5.6	6.3	6.4	6.0	130	
135	4.4	4.7	4.8	5.5	6.2	6.0	135	
140	3.7	4.0	4.1	4.9	5.5	5.8	140	
145	3.0	3.2		4.3	4.8	5.1	145	
150	2.3			3.7	4.2	4.4	150	
155				3.1	3.6	3.8	155	
160				2.5	2.9	3.1	160	
165				1.9	2.3		165	
170				1.4			170	
1. Tel.	0.0	0.0	0.0	0.0	0.0	0.0	1. Tel.	
2. Tel.	1.0	1.0	1.0	1.0	1.0	1.0	2. Tel.	
3. Tel.	1.0	1.0	1.0	1.0	1.0	1.0	3. Tel.	
4. Tel.	1.0	1.0	1.0	1.0	1.0	1.0	4. Tel.	

* 1000 lbs

Counterweight **22,0*** lbs

Radius		Main boom - 135 ft						
ft	33 ft/0°	33 ft/16°	33 ft/30°	52 ft/0°	52 ft/16°	52 ft/30°	ft	
25	23.0						25	
30	23.0			13.1			30	
35	23.0	19.5		13.1			35	
40	23.0	18.9	15.7	13.1	10.7		40	
45	23.0	18.3	15.3	13.1	10.3		45	
50	22.4	17.7	14.9	12.7	9.9	8.2	50	
55	21.5	17.1	14.1	12.3	9.6	8.0	55	
60	20.6	16.6	13.8	11.8	9.2	7.8	60	
65	19.6	16.1	13.5	11.4	8.9	7.6	65	
70	18.1	15.5	13.3	10.9	8.7	7.4	70	
75	16.6	14.8	13.0	10.5	8.4	7.2	75	
80	14.5	14.1	12.8	10.1	8.2	7.0	80	
85	12.6	13.4	12.6	9.7	7.9	6.9	85	
90	11.0	11.8	12.3	9.4	7.7	6.8	90	
95	9.6	10.3	10.8	9.1	7.5	6.7	95	
100	8.3	9.0	9.4	8.7	7.3	6.5	100	
105	7.2	7.8	8.2	8.4	7.2	6.4	105	
110	6.2	6.7	7.1	7.4	7.0	6.3	110	
115	5.3	5.8	6.1	6.5	6.8	6.2	115	
120	4.5	4.9	5.2	5.6	6.5	6.2	120	
125	3.7	4.1	4.3	4.9	5.7	6.1	125	
130	3.0	3.4	3.6	4.2	4.9	5.4	130	
135	2.4	2.7	2.8	3.5	4.2	4.6	135	
140				3.0	3.6	3.9	140	
145				2.4	3.0	3.3	145	
150					2.4	2.6	150	
1. Tel.	0.0	0.0	0.0	0.0	0.0	0.0	1. Tel.	
2. Tel.	1.0	1.0	1.0	1.0	1.0	1.0	2. Tel.	
3. Tel.	1.0	1.0	1.0	1.0	1.0	1.0	3. Tel.	
4. Tel.	1.0	1.0	1.0	1.0	1.0	1.0	4. Tel.	

* 1000 lbs

Weights / Working speeds



Axle	1	2	3	4	5	Total weight
1000 lbs	26,5	26,5	26,5	26,5	26,5	132,5 * incl. 11500 lbs counterweight



Lifting capacity (tons)	Sheaves	Parts of line	Weight lbs
90	7	4- 13	2430
50	3	1- 7	1430
20	1	1- 3	660



Gear	1	2	3	4	5	R	Gradeability max.	
On-road (mph)	8	13	21	31	43	9		
Off-road (mph)	5	8,6	13,7	20	27,6	5,9	55%	
Tires	14.00 R 25							

Tot.
Tot.



Drives	infinitely variable	Rope diameter / Rope length	Max. single line pull
Main hoist	0 - 390 ft/min single line	19 mm (3/4") 780 ft	13700 lbs.
Auxiliary hoist	0 - 390 ft/min single line	19 mm (3/4") 590 ft	13700 lbs.
Swing gear	0 - 1,9 min ⁻¹		
Boom elevation	approx. 65 seconds to reach - 3°, to + 84°		
Telescoping	approx. 220 seconds for boom length from 44 - 166 ft.		



Telescopic boom



On outriggers



Working range



Axle load



Hook blocks and hook



Crane movements



Speed



Swing-away extension

Carrier

Chassis:	Special KRUPP 5-axle carrier, all-welded torsion-resistant box-type construction in high strength steel.
Outriggers:	4 double hydraulically telescoping beams with vertical cylinders and outrigger pads. Independent horizontal and vertical movement control on each side of the chassis.
Engine:	Mercedes-Benz OM 442 IA, Diesel, 8 cylinders, water-cooled, with turbocharger and supercharger intercooler, 329 kW (477 HP) at 2100 min ⁻¹ (EG 80/1269 fan loose). Max. torque: 1780 Nm at 1000 – 1600 min ⁻¹ . Tank capacity: 100 gal.
Transmission:	Allison automatic CLB 755.
Transfer case:	Transfer case with 2 speeds and longitudinal differential lock.
Axle lines:	5 axle lines: 2, 3 and 5 are driven axle lines; 1, 2, 3 and 5 are steering axle lines; the 4th axle line is rigid.
Suspension:	All axle lines with lockable hydro-pneumatic suspension and hydraulic axle lock-out. Suspension level control. Range: + 6 1/2 / - 5 1/2. Possible combinations for transverse slopes.
Tires:	10 tires 14.00 R 25.
Steering:	Dual-circuit, stand-by steering pump.
Brakes:	Service brake: pneumatic dual-circuit, acting on all wheels, air dryer. Permanent brake: hydraulic retarder, integrated within Allison automatic powershift. Hand brake: pneumatically operated spring-loaded brake acting on 2nd, 3rd, 4th and 5th axle line.
Driver's cab:	Aluminium , 2-man design, safety glass, driver's seat with hydraulic suspension, engine driven hot-water heater. Complete instrumentation and driving controls.
Electrical system:	Three phase generator 28 V/55 A, 2 batteries 12 V/170 Ah, lighting system and signals 24 V.

Superstructure

Frame:	Torsion-resistant welded construction in high strength steel.
Engine:	Mercedes-Benz OM 336 A Diesel, 6 cylinders, water cooled, 104 kW (141 HP) at 1800 min ⁻¹ (EG 80/1269 fan rigid). Max. torque 566 Nm at 1500 – 1600 min ⁻¹ . Tank capacity: 50 gal.
Hydraulic system:	3 separate circuits. Tank capacity: 330 gal hydraulic oil.
Control system:	Infinite variation of all crane movements by control levers with automatic reset to zero.
Main hoist:	Rope drum with special grooving and integrated planetary gear with multiple-disc brake and axial piston motor.
Derricking:	1 cylinder. Boom angle from -3° to +84°.
Slewing:	Vario motor, planetary gear, service brake and holding brake.
Cab:	Aluminium , full vision, safety glass, adjustable operator's seat with hydraulic suspension, motor dependent hot-water-heating. Armrest-integrated crane controls. Ergonomically arranged instrumentation and crane operating.
Safety installations:	Hoist and lowering limit switch, pipe break safety valves, pressure relief valves.
Telescopic boom:	Welded construction in high strength steel, 1 pivot basic section, 4 telescopic sections. Total boom length: 166 ft, hydraulic extension.
Electrical system:	Three-phase generator 28 V/55 A, 2 batteries 12 V/143 Ah.

Additional equipment

Drive:	10 x 8 x 8
Tires:	10 tires, 16.00 R 25.
Swing-away lattice:	2-stage, stowing alongside boom, 33 – 52 ft.
Aux. hoist:	2nd hoisting gear.
Driver's cab/cab:	Engine-independent heater usable as engine preheater.
Safe load indicator:	Electronic load moment safety device with automatic cut-out and digital display for actual and admissible load, radius and various working conditions.

Further equipment upon request.