

# Load Rating Chart

## *Model TC700*



© Manitex 2000

**NOTE:** Additional copies of this Load Rating Chart can be purchased from your Manitex Distributor. When ordering, use the part number shown in the bottom left corner of this page.



## **WARNING**

1. THE OPERATOR MUST READ AND UNDERSTAND THE OWNER'S MANUAL BEFORE OPERATING THIS CRANE.
2. POSITIONING OR OPERATION OF CRANE BEYOND AREAS SHOWN ON THIS CHART IS NOT INTENDED OR APPROVED EXCEPT WHERE SPECIFIED IN OWNER'S MANUAL.
3. LOADED BOOM ANGLES AT SPECIFIED BOOM LENGTHS GIVE ONLY AN APPROXIMATION OF THE OPERATING RADIUS. THE BOOM ANGLE BEFORE LOADING SHOULD BE GREATER TO ACCOUNT FOR DEFLECTIONS. DO NOT EXCEED THE OPERATING RADIUS FOR RATED LOADS.
4. THE OPERATING RADIUS SHOWN IN THE JIB RATING CHART IS FOR FULLY EXTENDED BOOM ONLY. WHEN BOOM IS NOT FULLY EXTENDED, USE ONLY LOADED BOOM ANGLE TO DETERMINE LOAD RATING OF JIB.
5. FOR BOOM ANGLES NOT SHOWN ON JIB LOAD RATING CHART, USE RATING OF NEXT LOWER BOOM ANGLE.
6. FOR BOOM LENGTHS NOT SHOWN, USE RATING OF NEXT SHORTER OR LONGER BOOM LENGTH, WHICHEVER IS LESS. FOR RADII NOT SHOWN, USE RATING OF NEXT LONGER RADIUS.
7. CRANE LOAD RATINGS ON OUTRIGGERS ARE BASED ON FREELY SUSPENDED LOADS WITH THE MACHINE LEVELED AND STANDING ON A FIRM UNIFORM SUPPORTING SURFACE. NO ATTEMPT SHALL BE MADE TO MOVE A LOAD HORIZONTALLY ON THE GROUND IN ANY DIRECTION.
8. PRACTICAL WORKING LOADS DEPEND ON SUPPORTING SURFACE, WIND, AND OTHER FACTORS AFFECTING STABILITY SUCH AS HAZARDOUS SURROUNDINGS, EXPERIENCE OF PERSONNEL, AND PROPER HANDLING, ALL OF WHICH MUST BE TAKEN INTO ACCOUNT BY THE OPERATOR.
9. THE MAXIMUM LOAD WHICH MAY BE TELESCOPED IS LIMITED BY HYDRAULIC PRESSURE, BOOM ANGLE, AND BOOM LUBRICATION. IT IS SAFE TO ATTEMPT TO TELESCOPE ANY LOAD WITHIN THE LIMITS OF THE LOAD RATING CHART.

## **INFORMATION**

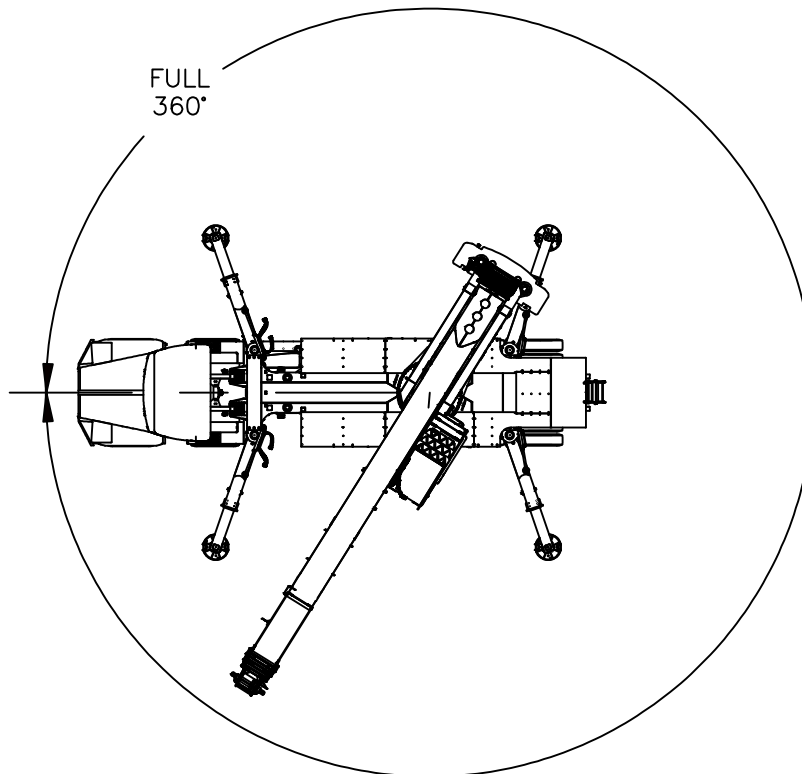
1. DEDUCTIONS MUST BE MADE FROM RATED LOADS FOR STOWED JIB, OPTIONAL ATTACHMENTS, HOOKS, AND LOADBLOCKS (SEE DEDUCTION CHART). WEIGHTS OF SLINGS AND ALL OTHER LOAD HANDLING DEVICES SHALL BE CONSIDERED A PART OF THE LOAD.
2. LOAD RATINGS ABOVE THE HEAVY LINE ARE STRUCTURALLY LIMITED CAPACITIES. LOAD RATINGS BELOW THE HEAVY LINE ARE STABILITY LIMITED CAPACITIES AND DO NOT EXCEED 85% OF TIPPING.

## **DEFINITIONS**

1. OPERATING RADIUS IS THE HORIZONTAL DISTANCE FROM THE AXIS OF ROTATION TO THE CENTER OF THE VERTICAL HOIST LINE OR TACKLE WITH LOAD APPLIED.
2. LOADED BOOM ANGLE IS THE INCLUDED ANGLE BETWEEN THE HORIZONTAL AND LONGITUDINAL AXES OF THE BOOM BASE AFTER LIFTING RATED LOAD AT RATED RADIUS.

ALLOWABLE LINE PULL												<h1>WARNING</h1> <p>ANTI-TWO-BLOCK SYSTEM MUST BE IN GOOD OPERATING CONDITION BEFORE OPERATING CRANE.</p> <p>REFER TO THE OWNER'S MANUAL.</p> <p>KEEP AT LEAST 3 WRAPS OF LOAD LINE ON THE DRUM AT ALL TIMES.</p>
1 PART LINE	2 PART LINE	3 PART LINE	4 PART LINE	5 PART LINE	6 PART LINE	7 PART LINE	8 PART LINE	9 PART LINE	10 PART LINE	11 PART LINE	12 PART LINE	
11000 LBS	22000 LBS	33000 LBS	44000 LBS	55000 LBS	66000 LBS	77000 LBS	88000 LBS	99000 LBS	110000 LBS	121000 LBS	132000 LBS	5/8" 6 X 19 CLASS (3.5:1 SF) 38,500 LBS MIN BREAKING STRENGTH
12000 LBS	24000 LBS	36000 LBS	48000 LBS	60000 LBS	72000 LBS	84000 LBS	96000 LBS	108000 LBS	120000 LBS	132000 LBS	140000 LBS	5/8" ROT RESISTANT (5:1 SF) 61,200 LBS MIN BREAKING STRENGTH

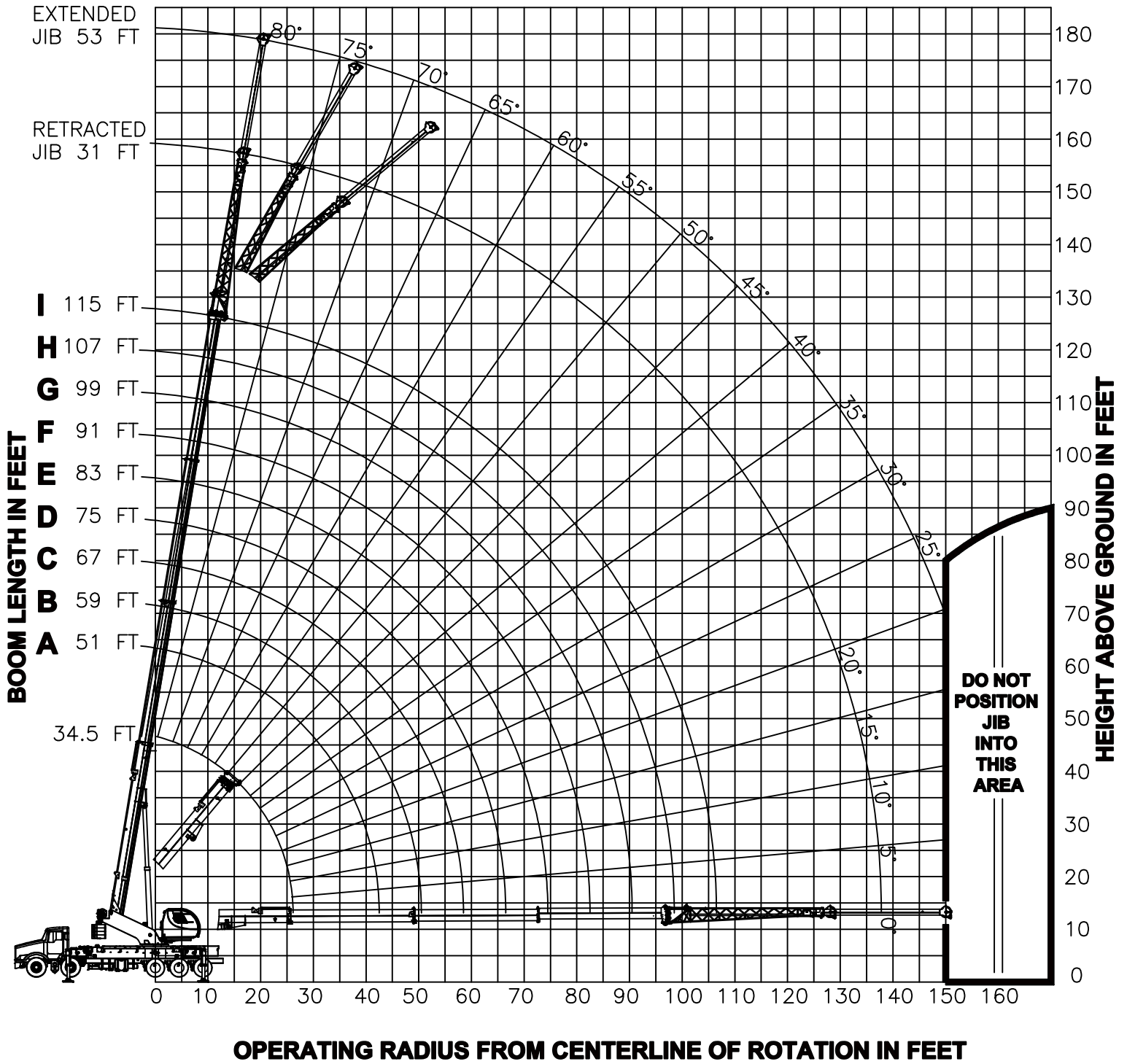
## AREA OF OPERATIONS



### DEDUCTIONS FROM RATED LOADS FOR LOAD HANDLING DEVICES SUPPLIED BY MANITEX

ROOSTER SHEAVE ————— 137 LBS  
 OVERHAUL BALL ————— SEE MANUFACTURER NAMEPLATE  
 LOAD BLOCK ————— SEE MANUFACTURER NAMEPLATE

# - RANGE DIAGRAM - TELESCOPIC JIB

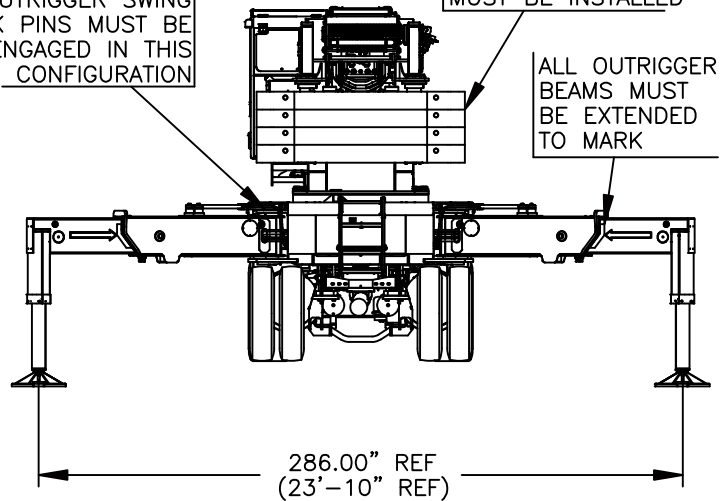


**USE THIS CHART ONLY WHEN ALL  
OUTRIGGER BEAMS ARE IN THE  
FULL EXTENDED POSITION AND  
22,000 LBS OF COUNTERWEIGHT  
ARE INSTALLED**

OUTRIGGER SWING  
LOCK PINS MUST BE  
ENGAGED IN THIS  
CONFIGURATION

A MINIMUM OF  
22,000 LBS OF  
COUNTERWEIGHTS  
MUST BE INSTALLED

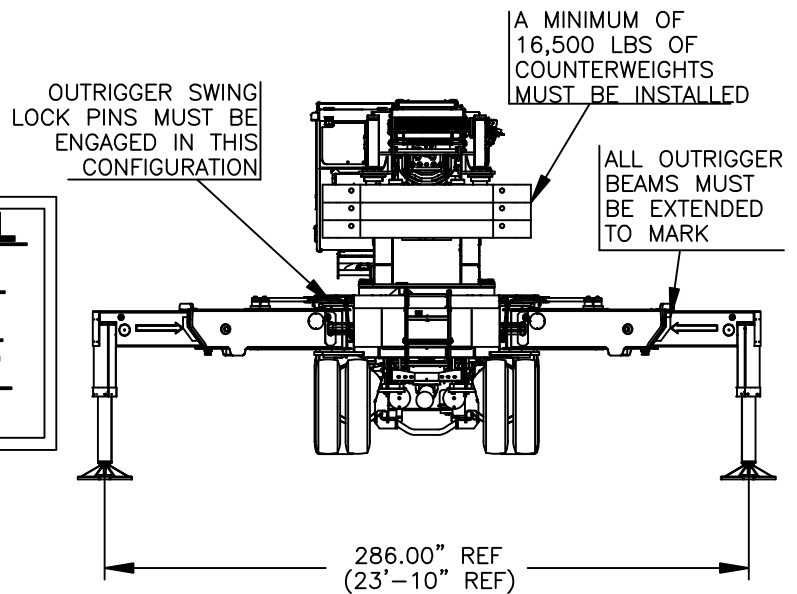
ALL OUTRIGGER  
BEAMS MUST  
BE EXTENDED  
TO MARK



**MAIN BOOM LIFTING CAPACITIES**

LMI OPERATING CODE 01A																					
BOOM LENGTH																					
34.5 FT		A 51 FT		B 59 FT		C 67 FT		D 75FT		E 83 FT		F 91 FT		G 99 FT		H 107 FT		I 115 FT		RAD (FT)	
BOOM ANGLE (DEG)	FULL 360° (LBS)	BOOM ANGLE (DEG)	FULL 360° (LBS)	BOOM ANGLE (DEG)	FULL 360° (LBS)	BOOM ANGLE (DEG)	FULL 360° (LBS)	BOOM ANGLE (DEG)	FULL 360° (LBS)	BOOM ANGLE (DEG)	FULL 360° (LBS)	BOOM ANGLE (DEG)	FULL 360° (LBS)	BOOM ANGLE (DEG)	FULL 360° (LBS)	BOOM ANGLE (DEG)	FULL 360° (LBS)	BOOM ANGLE (DEG)	FULL 360° (LBS)		
8	67.0	140000	75.4	80000	77.5	77200	79.6	74600												8	
10	63.2	140000	73.0	80000	75.5	75200	77.9	70800												10	
12	59.2	105750	70.6	80000	73.5	73150	76.2	67150	78.0	60400										12	
15	52.8	87100	66.8	78400	70.5	69500	73.6	61900	75.7	56350	77.7	51450	79.0	46000						15	
20	40.2	63150	60.2	62800	64.6	57700	69.0	53700	71.6	49400	74.2	45900	75.9	41550	77.6	37850	78.6	33650		20	
25	21.9	48300	53.0	50000	58.0	47850	64.0	46220	67.5	43150	70.3	40770	72.6	37250	74.5	34370	76.0	32000	77.6	30020	25
30			44.9	39800	52.0	39600	59.0	39500	62.9	37500	66.8	36000	69.3	33250	71.7	31100	73.5	29100	75.2	27500	30
35			35.4	32370	44.0	32800	53.4	33470	58.6	32350	62.6	31570	65.8	29500	68.5	28000	70.6	26350	72.7	25070	35
40			21.4	27600	35.6	27850	47.5	28200	53.1	27800	58.6	27500	62.0	26100	65.4	25100	67.8	23750	70.1	22750	40
45					24.0	23000	40.8	23650	48.0	23750	54.2	23900	58.1	23000	62.0	22400	64.7	21350	67.3	20600	45
50							32.7	19850	42.6	20150	49.4	20600	54.0	20200	58.5	19900	61.5	19100	64.5	18550	50
55							21.9	16800	36.0	17150	44.1	17700	49.4	17600	54.7	17550	58.2	17050	61.6	16700	55
60									27.7	13750	38.3	15150	44.6	15250	50.8	15450	54.7	15100	58.5	14900	60
65											31.4	13000	39.0	13200	46.5	13550	50.9	13400	55.2	13300	65
70											22.5	11200	32.2	11450	41.8	11800	46.8	11800	51.8	11800	70
75											10.0	9800	23.4	10000	36.7	10300	42.5	10350	48.2	10400	75
80													17.6	8350	30.7	8950	37.6	9050	44.4	9200	80
85															23.1	7800	31.7	7900	40.2	8050	85
90															9.5	6900	22.5	6950	35.5	7100	90
95																	19.0	5850	30.2	6250	95
100																			23.7	5550	100
105																			13.6	5000	105
STOWED TELESCOPIC JIB DEDUCTIONS FOR MAIN BOOM CAPACITIES																					
1600 LBS	1080 LBS	940 LBS	830 LBS	740 LBS	670 LBS	610 LBS	560 LBS	520 LBS	480 LBS												
STOWED BI-FOLD JIB DEDUCTIONS FOR MAIN BOOM CAPACITIES																					
1100 LBS	990 LBS	750 LBS	650 LBS	570 LBS	510 LBS	460 LBS	420 LBS	380 LBS	330 LBS												

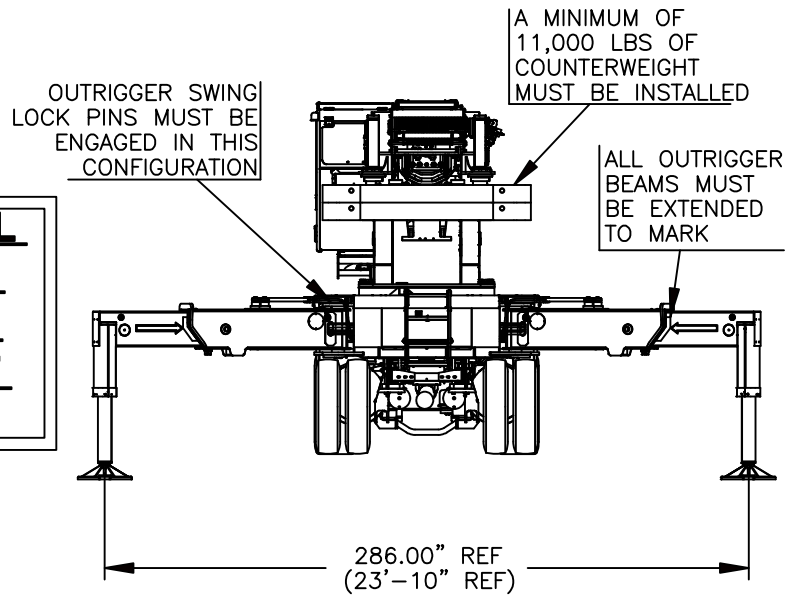
**USE THIS CHART ONLY WHEN ALL OUTRIGGER BEAMS ARE IN THE FULL EXTENDED POSITION AND 16,500 LBS OF COUNTERWEIGHT ARE IN USE**



**MAIN BOOM LIFTING CAPACITIES**

LMI OPERATING CODE 04A																					
BOOM LENGTH																					
34.5 FT		A 51 FT		B 59 FT		C 67 FT		D 75FT		E 83 FT		F 91 FT		G 99 FT		H 107 FT		I 115 FT		RAD (FT)	
BOOM ANGLE (DEG)	FULL 360° (LBS)	BOOM ANGLE (DEG)	FULL 360° (LBS)	BOOM ANGLE (DEG)	FULL 360° (LBS)	BOOM ANGLE (DEG)	FULL 360° (LBS)	BOOM ANGLE (DEG)	FULL 360° (LBS)	BOOM ANGLE (DEG)	FULL 360° (LBS)	BOOM ANGLE (DEG)	FULL 360° (LBS)	BOOM ANGLE (DEG)	FULL 360° (LBS)	BOOM ANGLE (DEG)	FULL 360° (LBS)	BOOM ANGLE (DEG)	FULL 360° (LBS)		
8	67.0	140000	75.4	80000	77.5	77200	79.6	74600												8	
10	63.2	140000	73.0	80000	75.5	75200	77.9	70800												10	
12	59.2	105750	70.6	80000	73.5	73150	76.2	67150	78.0	60400										12	
15	52.8	87100	66.8	78400	70.5	69500	73.6	61900	75.7	56350	77.7	51450	79.0	46000						15	
20	40.2	63150	60.2	62800	64.6	57700	69.0	53700	71.6	49400	74.2	45900	75.9	41550	77.6	37850	78.6	33650		20	
25	19.5	48300	53.0	50000	58.0	47850	64.2	46220	67.5	43150	70.6	40770	72.6	37250	74.7	34370	76.0	32000	77.6	30020	25
30			44.9	39800	52.0	39600	59.0	39500	62.9	37500	66.8	36000	69.3	33250	71.7	31100	73.5	29100	75.2	27500	30
35			35.1	32370	44.0	32800	53.6	33470	58.6	32350	62.8	31570	65.8	29500	68.7	28000	70.6	26350	72.7	25070	35
40			21.4	27500	35.6	27600	47.5	28200	53.1	27800	58.6	27500	62.0	26100	65.4	25100	67.8	23750	70.1	22750	40
45					24.0	22700	40.8	23650	48.0	23750	54.2	23900	58.1	23000	62.0	22400	64.7	21350	67.3	20600	45
50							32.7	19850	42.6	20150	49.4	20600	54.0	20200	58.5	19900	61.5	19100	64.5	18550	50
55							21.9	16800	36.0	17150	44.1	17700	49.4	17450	54.7	17550	58.2	17050	61.6	16700	55
60								27.7	13750	38.3	15150	44.6	15000	50.8	15450	54.7	15100	58.5	14900		60
65										31.4	13000	39.0	12900	46.5	13400	50.9	13250	55.2	13300		65
70										22.5	11200	32.2	11100	41.8	11700	46.8	11550	51.8	11800		70
75										10.0	9800	23.4	9600	36.7	10200	42.5	10100	48.2	10400		75
80												17.6	8350	30.7	8950	37.6	8800	44.4	9200		80
85														23.1	7800	31.7	7700	40.2	8050		85
90														9.5	6900	22.5	6500	35.5	7000		90
95																19.0	5850	30.2	6150		95
100																		23.7	5450		100
105																		13.6	4750		105
STOWED TELESCOPIC JIB DEDUCTIONS FOR MAIN BOOM CAPACITIES																					
1600 LBS	1080 LBS	940 LBS	830 LBS	740 LBS	670 LBS	610 LBS	560 LBS	520 LBS	480 LBS												
STOWED BI-FOLD JIB DEDUCTIONS FOR MAIN BOOM CAPACITIES																					
1100 LBS	990 LBS	750 LBS	650 LBS	570 LBS	510 LBS	460 LBS	420 LBS	380 LBS	330 LBS												

**USE THIS CHART ONLY WHEN ALL OUTRIGGER BEAMS ARE IN THE FULL EXTENDED POSITION AND 11,000 LBS OF COUNTERWEIGHT ARE IN USE**

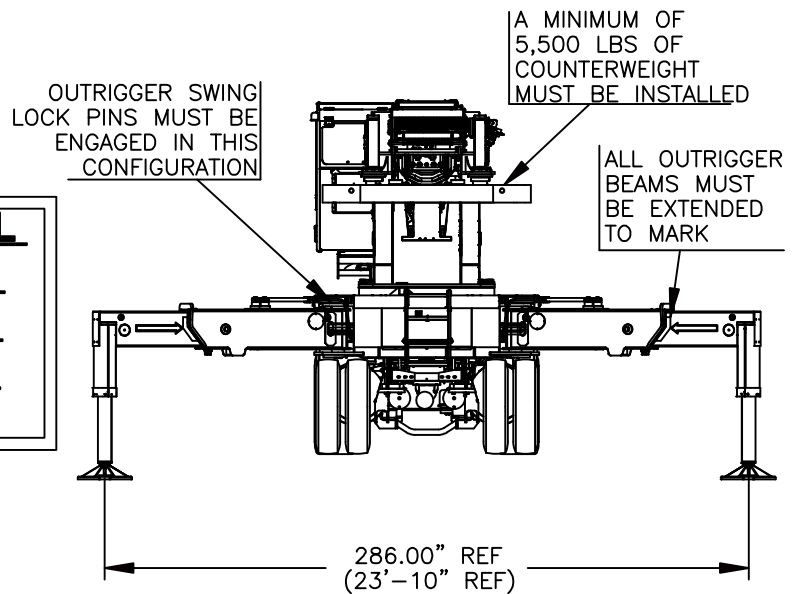


**MAIN BOOM LIFTING CAPACITIES**

LMI OPERATING CODE 07A																					
BOOM LENGTH																					
34.5 FT		A 51 FT		B 59 FT		C 67 FT		D 75FT		E 83 FT		F 91 FT		G 99 FT		H 107 FT		I 115 FT		RAD (FT)	
BOOM ANGLE (DEG)	FULL 360° (LBS)	BOOM ANGLE (DEG)	FULL 360° (LBS)	BOOM ANGLE (DEG)	FULL 360° (LBS)	BOOM ANGLE (DEG)	FULL 360° (LBS)	BOOM ANGLE (DEG)	FULL 360° (LBS)	BOOM ANGLE (DEG)	FULL 360° (LBS)	BOOM ANGLE (DEG)	FULL 360° (LBS)	BOOM ANGLE (DEG)	FULL 360° (LBS)	BOOM ANGLE (DEG)	FULL 360° (LBS)	BOOM ANGLE (DEG)	FULL 360° (LBS)		
8	67.0	132300	75.4	80000	77.5	77200	79.6	74600												8	
10	63.2	120000	73.0	80000	75.5	75200	77.9	70800												10	
12	59.2	104100	70.6	80000	73.5	73150	76.2	67150	78.0	60400										12	
15	52.8	83700	66.8	78400	70.5	69500	73.6	61900	75.7	56350	77.7	51450	79.0	46000						15	
20	40.2	59000	60.2	62050	64.6	57100	69.0	53250	71.6	49200	74.2	45900	75.9	41550	77.6	37850	78.6	33650		20	
25	19.5	45610	53.0	48210	58.0	46350	64.2	44940	67.5	42350	70.6	40360	72.6	36850	74.7	34030	76.0	31750	77.6	29720	25
30			44.9	38100	52.0	38150	59.0	38300	62.9	37000	66.8	36000	69.3	33250	71.7	31100	73.5	29100	75.2	27500	30
35			35.1	30190	44.0	30750	53.6	31680	58.6	30950	62.8	30440	65.8	28600	68.7	27250	70.6	25750	72.7	24570	35
40			21.4	25700	35.6	24900	47.5	26450	53.1	26200	58.6	26050	62.0	24950	65.4	24200	67.8	23100	70.1	22300	40
45					24.0	19850	40.8	21700	48.0	21750	54.2	21900	58.1	21500	62.0	21200	64.7	20450	67.3	19950	45
50							32.7	17750	42.6	17950	49.4	18300	54.0	18350	58.5	18400	61.5	18000	64.5	17750	50
55							21.9	14600	36.0	14800	44.1	15200	49.4	15450	54.7	15850	58.2	15750	61.6	15700	55
60								27.7	12100	38.3	12800	44.6	13100	50.8	13550	54.7	13650	58.5	13800	60	
65										31.4	10900	39.0	11100	46.5	11550	50.9	11650	55.2	11950	65	
70										22.5	9300	32.2	9400	41.8	9800	46.8	9950	51.8	10350	70	
75										10.0	8000	23.4	8000	36.7	8400	42.5	8550	48.2	8900	75	
80												17.6	6600	30.7	7200	37.6	7300	44.4	7700	80	
85														23.1	6200	31.7	6250	40.2	6600	85	
90														9.5	5300	22.5	5200	35.5	5600	90	
95																19.0	4400	30.2	4800	95	
100																		23.7	4100	100	
105																		13.6	3600	105	
STOWED TELESCOPIC JIB DEDUCTIONS FOR MAIN BOOM CAPACITIES																					
1600 LBS	1080 LBS	940 LBS	830 LBS	740 LBS	670 LBS	610 LBS	560 LBS	520 LBS	480 LBS												
STOWED BI-FOLD JIB DEDUCTIONS FOR MAIN BOOM CAPACITIES																					
1100 LBS	990 LBS	750 LBS	650 LBS	570 LBS	510 LBS	460 LBS	420 LBS	380 LBS	330 LBS												



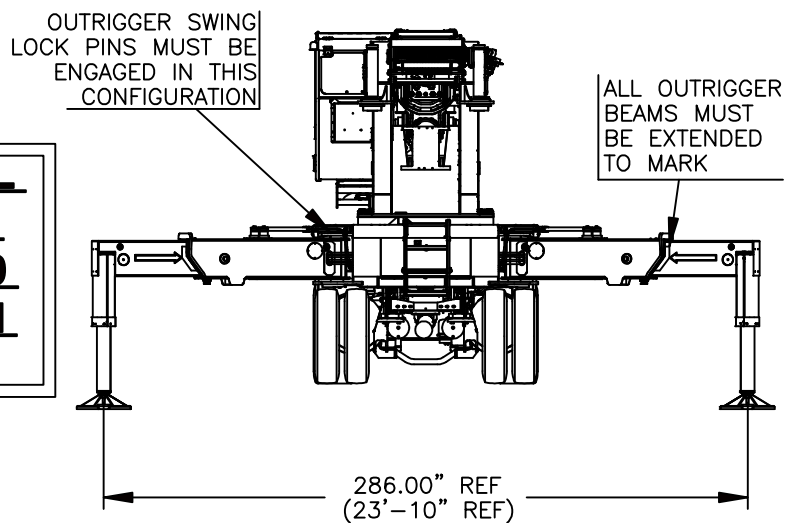
**USE THIS CHART ONLY WHEN ALL OUTRIGGER BEAMS ARE IN THE FULL EXTENDED POSITION AND 5,500 LBS OF COUNTERWEIGHT ARE IN USE**



**MAIN BOOM LIFTING CAPACITIES**

LMI OPERATING CODE 10A																					
BOOM LENGTH																					
34.5 FT		A 51 FT		B 59 FT		C 67 FT		D 75FT		E 83 FT		F 91 FT		G 99 FT		H 107 FT		I 115 FT		RAD (FT)	
BOOM ANGLE (DEG)	FULL 360° (LBS)	BOOM ANGLE (DEG)	FULL 360° (LBS)	BOOM ANGLE (DEG)	FULL 360° (LBS)	BOOM ANGLE (DEG)	FULL 360° (LBS)	BOOM ANGLE (DEG)	FULL 360° (LBS)	BOOM ANGLE (DEG)	FULL 360° (LBS)	BOOM ANGLE (DEG)	FULL 360° (LBS)	BOOM ANGLE (DEG)	FULL 360° (LBS)	BOOM ANGLE (DEG)	FULL 360° (LBS)	BOOM ANGLE (DEG)	FULL 360° (LBS)		
8	67.0	132300	75.4	80000	77.5	77200	79.6	74600												8	
10	63.2	120000	73.0	80000	75.5	75200	77.9	70800												10	
12	59.2	102750	70.6	80000	73.5	73150	76.2	67150	78.0	60400										12	
15	52.8	81000	66.8	78400	70.5	69500	73.6	61900	75.7	56350	77.7	51450	79.0	46000						15	
20	40.2	55700	60.2	60600	64.6	56700	69.0	52800	71.6	49000	74.2	45900	75.9	41550	77.6	37850	78.6	33650		20	
25	21.9	43900	53.0	47000	58.0	44300	64.0	44100	67.5	42000	70.3	40360	72.6	36850	74.7	34030	76.0	31750	77.6	29720	25
30			44.9	36800	52.0	36500	59.0	37150	62.9	36500	66.8	36000	69.3	33250	71.7	31100	73.5	29100	75.2	27500	30
35			35.4	28210	44.0	27900	53.4	30120	58.6	29750	62.8	29500	65.8	27850	68.7	26600	70.6	25200	72.7	24100	35
40			21.4	22900	35.6	22300	47.5	24000	53.1	23600	58.6	24300	62.0	23550	65.4	23000	67.8	22100	70.1	21400	40
45					24.0	17600	40.8	19400	48.0	19550	54.2	19600	58.1	19550	62.0	19500	64.7	19050	67.3	18700	45
50							32.7	15900	42.6	15750	49.4	15600	54.0	15900	58.5	16400	61.5	16250	64.5	16200	50
55							21.9	12900	36.0	13400	44.1	13400	49.4	13500	54.7	13700	58.2	13750	61.6	13900	55
60								27.7	10350	38.3	11200	44.6	11300	50.8	11500	54.7	11600	58.5	11800	60	
65										31.4	9500	39.0	9400	46.5	9800	50.9	9850	55.2	10000	65	
70										22.5	8000	32.2	7800	41.8	8400	46.8	8400	51.8	8600	70	
75										10.0	6800	23.4	6400	36.7	7100	42.5	7000	48.2	7400	75	
80												17.6	5300	30.7	6000	37.6	5900	44.4	6100	80	
85														23.1	5000	31.7	4800	40.2	5200	85	
90														9.5	4100	22.5	3800	35.5	4200	90	
95																19.0	3400	30.2	3500	95	
100																		23.7	2800	100	
105																		13.6	2200	105	
STOWED TELESCOPIC JIB DEDUCTIONS FOR MAIN BOOM CAPACITIES																					
1600 LBS	1080 LBS	940 LBS	830 LBS	740 LBS	670 LBS	610 LBS	560 LBS	520 LBS	480 LBS												
STOWED BI-FOLD JIB DEDUCTIONS FOR MAIN BOOM CAPACITIES																					
1100 LBS	990 LBS	750 LBS	650 LBS	570 LBS	510 LBS	460 LBS	420 LBS	380 LBS	330 LBS												

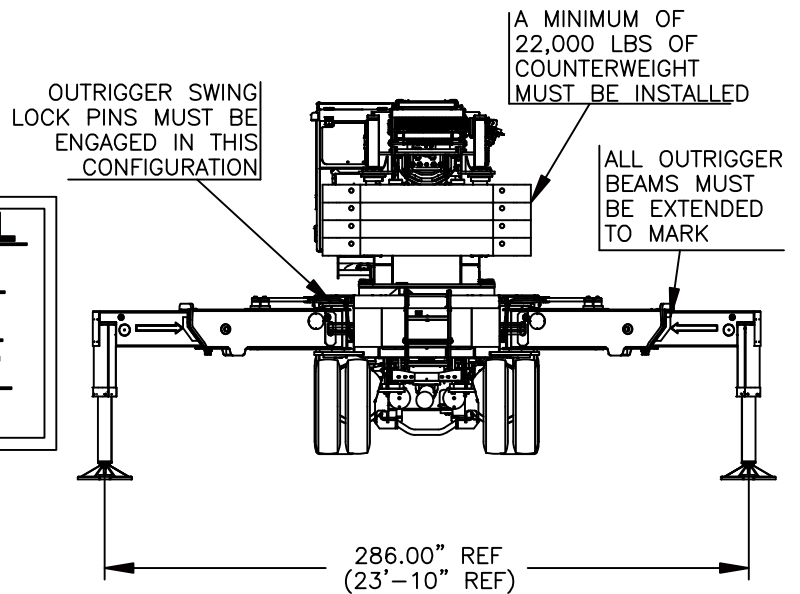
**USE THIS CHART ONLY WHEN ALL OUTRIGGER BEAMS ARE IN THE FULL EXTENDED POSITION AND 0 LBS OF COUNTERWEIGHT ARE IN USE**



### MAIN BOOM LIFTING CAPACITIES

LMI OPERATING CODE 13A																					
BOOM LENGTH																					
34.5 FT		A 51 FT		B 59 FT		C 67 FT		D 75FT		E 83 FT		F 91 FT		G 99 FT		H 107 FT		I 115 FT		RAD (FT)	
BOOM ANGLE (DEG)	FULL 360° (LBS)	BOOM ANGLE (DEG)	FULL 360° (LBS)	BOOM ANGLE (DEG)	FULL 360° (LBS)	BOOM ANGLE (DEG)	FULL 360° (LBS)	BOOM ANGLE (DEG)	FULL 360° (LBS)	BOOM ANGLE (DEG)	FULL 360° (LBS)	BOOM ANGLE (DEG)	FULL 360° (LBS)	BOOM ANGLE (DEG)	FULL 360° (LBS)	BOOM ANGLE (DEG)	FULL 360° (LBS)	BOOM ANGLE (DEG)	FULL 360° (LBS)		
8	67.0	132300	75.4	80000	77.5	77200	79.6	74600												8	
10	63.2	120000	73.0	80000	75.5	75200	77.9	70800												10	
12	59.2	101700	70.6	80000	73.5	73150	76.2	67150	78.0	60400										12	
15	52.8	78900	66.8	78400	70.5	69500	73.6	61900	75.7	56350	77.7	51450	79.0	46000						15	
20	40.2	53000	60.2	58200	64.6	56000	69.0	51800	71.6	48550	74.2	45900	75.9	41550	77.6	37850	78.6	33650		20	
25	19.5	42200	53.0	45200	58.0	42550	64.0	42420	67.5	41250	70.3	40360	72.6	36850	74.7	34030	76.0	31750	77.6	29720	25
30			44.9	34400	52.0	33050	59.0	34900	62.9	34800	66.8	35700	69.3	33250	71.7	31100	73.5	29100	75.2	27500	30
35			35.1	25500	44.0	24250	53.4	26650	58.6	26900	62.8	27300	65.8	27050	68.7	26130	70.6	24800	72.7	23730	35
40			21.4	19800	35.6	18950	47.5	20900	53.1	20500	58.6	21600	62.0	21150	65.4	22000	67.8	21250	70.1	20700	40
45					24.0	14750	40.8	16500	48.0	16300	54.2	17200	58.1	16950	62.0	17600	64.7	17500	67.3	17700	45
50							32.7	13200	42.6	13450	49.4	13900	54.0	13750	58.5	14300	61.5	14300	64.5	14550	50
55							21.9	10800	36.0	11000	44.1	11350	49.4	11250	54.7	11800	58.2	11800	61.6	12100	55
60								27.7	8800	38.3	9250	44.6	9000	50.8	9700	54.7	9700	58.5	10100	60	
65										31.4	7350	39.0	7250	46.5	7800	50.9	7800	55.2	8200	65	
70										22.5	5950	32.2	5700	41.8	6250	46.8	6250	51.8	6700	70	
75										10.0	4850	23.4	4400	36.7	5050	42.5	5050	48.2	5400	75	
80												17.6	3850	30.7	4050	37.6	3950	44.4	4400	80	
85														23.1	3200	31.7	3050	40.2	3400	85	
90														9.5	2300	22.5	2050	35.5	2650	90	
95																19.0	1850	30.2	1950	95	
100																		23.7	1400	100	
105																					105
STOWED TELESCOPIC JIB DEDUCTIONS FOR MAIN BOOM CAPACITIES																					
1600 LBS	1080 LBS	940 LBS	830 LBS	740 LBS	670 LBS	610 LBS	560 LBS	520 LBS	480 LBS												
STOWED BI-FOLD JIB DEDUCTIONS FOR MAIN BOOM CAPACITIES																					
1100 LBS	990 LBS	750 LBS	650 LBS	570 LBS	510 LBS	460 LBS	420 LBS	380 LBS	330 LBS												

**USE THIS CHART ONLY WHEN ALL  
OUTRIGGER BEAMS ARE IN THE  
FULL EXTENDED POSITION AND  
22,000 LBS OF COUNTERWEIGHT  
ARE IN USE**



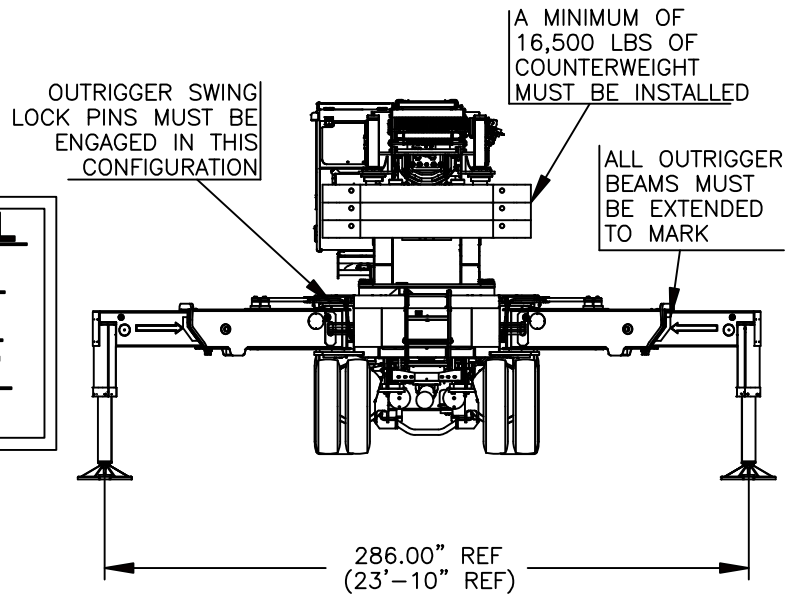
**31 FT RETRACTED TELESCOPIC JIB  
LIFTING CAPACITIES**

LOAD RADIUS (FT)	0° OFFSET		20° OFFSET		40° OFFSET	
	LOADED BOOM ANGLE (DEG)	CODE 16A OVER REAR (LBS)	LOADED BOOM ANGLE (DEG)	CODE 17A OVER REAR (LBS)	LOADED BOOM ANGLE (DEG)	CODE 18A OVER REAR (LBS)
35	76.4	11000				
40	74.2	10800	78.3	8850		
45	72.0	10600	76.1	8600	79.4	6600
50	69.8	10350	73.8	8350	77.1	6400
55	67.6	9900	71.5	8100	74.8	6300
60	65.3	9250	69.2	7800	72.4	6150
65	63.0	8600	66.9	7250	69.9	6050
70	60.6	7950	64.5	6850	67.4	5900
75	58.2	7400	62.0	6500	64.8	5800
80	55.7	6950	59.5	6250	62.2	5650
85	53.1	6600	56.8	6050	59.4	5500
90	50.4	6400	54.1	5700	56.6	5350
95	47.6	5950	51.3	5400	53.6	5050
100	44.7	5500	48.4	5150	50.5	4850
105	41.7	4850	45.2	4850	47.1	4600
110	38.4	4200	41.9	4300	43.5	4400
115	34.9	3600	38.3	3750	39.5	3950
120	31.1	3050	34.3	3300	35.1	3300
125	26.8	2650	29.8	2750	29.7	2750
130	21.7	2200	24.3	2300		
135	15.0	1750	16.8	1750		
140						
145						
150						
155						

**53 FT EXTENDED TELESCOPIC JIB  
LIFTING CAPACITIES**

LOAD RADIUS (FT)	0° OFFSET		20° OFFSET		40° OFFSET	
	LOADED BOOM ANGLE (DEG)	CODE 28A OVER REAR (LBS)	LOADED BOOM ANGLE (DEG)	CODE 29A OVER REAR (LBS)	LOADED BOOM ANGLE (DEG)	CODE 30A OVER REAR (LBS)
35	78.2	7000				
40	76.3	6800				
45	74.5	6600				
50	72.6	6400	78.6	4750		
55	70.6	6150	76.6	4600		
60	68.7	5950	74.7	4500		
65	66.7	5750	72.7	4350	77.7	3350
70	64.7	5550	70.7	4250	75.6	3300
75	62.7	5300	68.6	4100	73.4	3200
80	60.6	5100	66.5	3950	71.2	3150
85	58.5	4900	64.3	3850	68.9	3050
90	56.4	4700	62.1	3700	66.6	3000
95	54.2	4500	59.9	3600	64.2	2950
100	51.9	4250	57.6	3450	61.7	2900
105	49.5	4050	55.2	3300	59.2	2800
110	47.1	3850	52.7	3200	56.5	2750
115	44.6	3650	50.1	3050	53.6	2700
120	41.9	3450	47.3	2950	50.6	2650
125	39.1	3250	44.4	2800	47.4	2600
130	36.1	3050	41.3	2650	43.9	2500
135	32.9	2850	38.0	2550	40.1	2450
140	29.4	2200	34.3	1950	35.6	1950
145	25.5	1850	30.1	1750	30.1	1750
150	20.8	1550	25.0	1550	22.0	1550
155	14.9	1300	18.0	1300		

**USE THIS CHART ONLY WHEN ALL OUTRIGGER BEAMS ARE IN THE FULL EXTENDED POSITION AND 16,500 LBS OF COUNTERWEIGHT ARE IN USE**



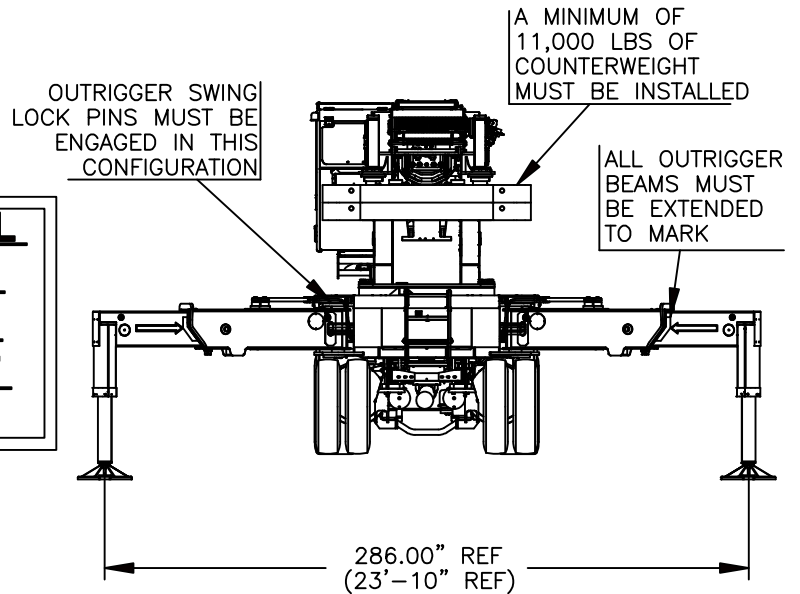
**31 FT RETRACTED TELESCOPIC JIB LIFTING CAPACITIES**

LOAD RADIUS (FT)	0° OFFSET		20° OFFSET		40° OFFSET	
	LOADED BOOM ANGLE (DEG)	CODE 19A OVER REAR (LBS)	LOADED BOOM ANGLE (DEG)	CODE 20A OVER REAR (LBS)	LOADED BOOM ANGLE (DEG)	CODE 21A OVER REAR (LBS)
35	76.4	11000				
40	74.2	10800	78.3	8850		
45	72.0	10600	76.1	8600	79.4	6600
50	69.8	10350	73.8	8350	77.1	6400
55	67.6	9900	71.5	8100	74.8	6300
60	65.3	9250	69.2	7800	72.4	6150
65	63.0	8600	66.9	7250	69.9	6050
70	60.6	7950	64.5	6850	67.4	5900
75	58.2	7400	62.0	6500	64.8	5800
80	55.7	6950	59.5	6250	62.2	5650
85	53.1	6300	56.8	6050	59.4	5500
90	50.4	5700	54.1	5700	56.6	5350
95	47.6	5000	51.3	5200	53.6	5050
100	44.7	4300	48.4	4650	50.5	4650
105	41.7	3800	45.2	4000	47.1	4000
110	38.4	3200	41.9	3400	43.5	3500
115	34.9	2650	38.3	2850	39.5	3000
120	31.1	2200	34.3	2400	35.1	2400
125	26.8	1750	29.8	1850	29.7	1850
130	21.7	1300	24.3	1400		
135	15.0	900	16.8	900		
140						
145						
150						
155						

**53 FT EXTENDED TELESCOPIC JIB LIFTING CAPACITIES**

LOAD RADIUS (FT)	0° OFFSET		20° OFFSET		40° OFFSET	
	LOADED BOOM ANGLE (DEG)	CODE 31A OVER REAR (LBS)	LOADED BOOM ANGLE (DEG)	CODE 32A OVER REAR (LBS)	LOADED BOOM ANGLE (DEG)	CODE 33A OVER REAR (LBS)
35	78.2	7000				
40	76.3	6800				
45	74.5	6600				
50	72.6	6400	78.6	4750		
55	70.6	6150	76.6	4600		
60	68.7	5950	74.7	4500		
65	66.7	5750	72.7	4350	77.7	3350
70	64.7	5550	70.7	4250	75.6	3300
75	62.7	5300	68.6	4100	73.4	3200
80	60.6	5100	66.5	3950	71.2	3150
85	58.5	4900	64.3	3850	68.9	3050
90	56.4	4700	62.1	3700	66.6	3000
95	54.2	4500	59.9	3600	64.2	2950
100	51.9	4250	57.6	3450	61.7	2900
105	49.5	4050	55.2	3300	59.2	2800
110	47.1	3850	52.7	3200	56.5	2750
115	44.6	3650	50.1	3050	53.6	2700
120	41.9	3200	47.3	2950	50.6	2650
125	39.1	2750	44.4	2800	47.4	2600
130	36.1	2200	41.3	2650	43.9	2500
135	32.9	2000	38.0	2100	40.1	2200
140	29.4	1450	34.3	1550	35.6	1550
145	25.5	1200	30.1	1300	30.1	1300
150	20.8	900	25.0	1000	22.0	1000
155						

**USE THIS CHART ONLY WHEN ALL  
OUTRIGGER BEAMS ARE IN THE  
FULL EXTENDED POSITION AND  
11,000 LBS OF COUNTERWEIGHT  
ARE IN USE**



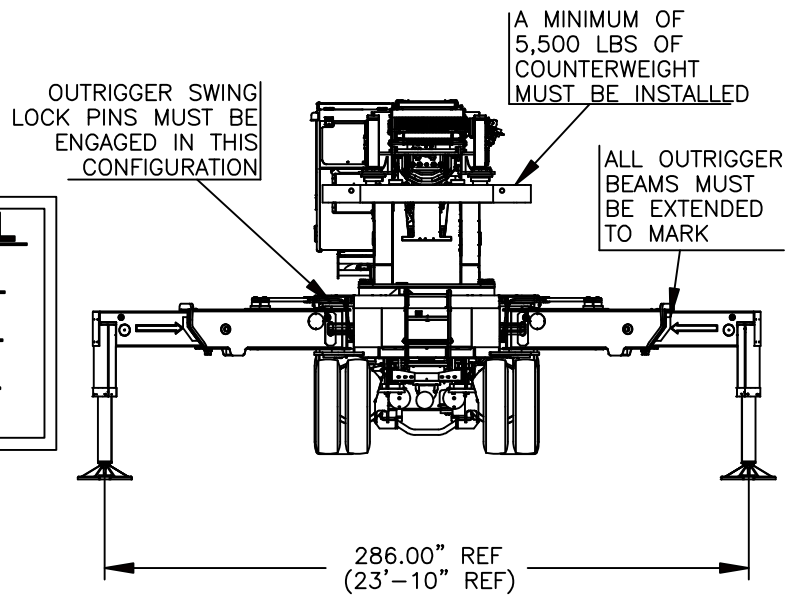
**31 FT RETRACTED TELESCOPIC JIB  
LIFTING CAPACITIES**

LOAD RADIUS (FT)	0° OFFSET		20° OFFSET		40° OFFSET	
	LOADED BOOM ANGLE (DEG)	CODE 22A OVER REAR (LBS)	LOADED BOOM ANGLE (DEG)	CODE 23A OVER REAR (LBS)	LOADED BOOM ANGLE (DEG)	CODE 24A OVER REAR (LBS)
35	76.4	11000				
40	74.2	10800	78.3	8850		
45	72.0	10600	76.1	8600	79.4	6600
50	69.8	10350	73.8	8350	77.1	6400
55	67.6	9900	71.5	8100	74.8	6300
60	65.3	9250	69.2	7800	72.4	6150
65	63.0	8600	66.9	7250	69.9	6050
70	60.6	7950	64.5	6850	67.4	5900
75	58.2	7100	62.0	6500	64.8	5800
80	55.7	6100	59.5	6250	62.2	5650
85	53.1	5400	56.8	5800	59.4	5500
90	50.4	4700	54.1	4800	56.6	5350
95	47.6	4000	51.3	4300	53.6	4600
100	44.7	3300	48.4	3750	50.5	3800
105	41.7	2900	45.2	3050	47.1	3100
110	38.4	2300	41.9	2500	43.5	2550
115	34.9	1750	38.3	1950	39.5	2000
120	31.1	1300	34.3	1550	35.1	1550
125	26.8	900	29.8	1000	29.7	1000
130						
135						
140						
145						
150						
155						

**53 FT EXTENDED TELESCOPIC JIB  
LIFTING CAPACITIES**

LOAD RADIUS (FT)	0° OFFSET		20° OFFSET		40° OFFSET	
	LOADED BOOM ANGLE (DEG)	CODE 34A OVER REAR (LBS)	LOADED BOOM ANGLE (DEG)	CODE 35A OVER REAR (LBS)	LOADED BOOM ANGLE (DEG)	CODE 36A OVER REAR (LBS)
35	78.2	7000				
40	76.3	6800				
45	74.5	6600				
50	72.6	6400	78.6	4750		
55	70.6	6150	76.6	4600		
60	68.7	5950	74.7	4500		
65	66.7	5750	72.7	4350	77.7	3350
70	64.7	5550	70.7	4250	75.6	3300
75	62.7	5300	68.6	4100	73.4	3200
80	60.6	5100	66.5	3950	71.2	3150
85	58.5	4900	64.3	3850	68.9	3050
90	56.4	4700	62.1	3700	66.6	3000
95	54.2	4500	59.9	3600	64.2	2950
100	51.9	4250	57.6	3450	61.7	2900
105	49.5	3700	55.2	3300	59.2	2800
110	47.1	3100	52.7	3200	56.5	2750
115	44.6	2800	50.1	3050	53.6	2700
120	41.9	2500	47.3	2800	50.6	2650
125	39.1	1900	44.4	2250	47.4	2600
130	36.1	1350	41.3	2000	43.9	1800
135	32.9	1150	38.0	1450	40.1	1350
140			34.3	900	35.6	900
145						
150						
155						

**USE THIS CHART ONLY WHEN ALL OUTRIGGER BEAMS ARE IN THE FULL EXTENDED POSITION AND 5,500 LBS OF COUNTERWEIGHT ARE IN USE**



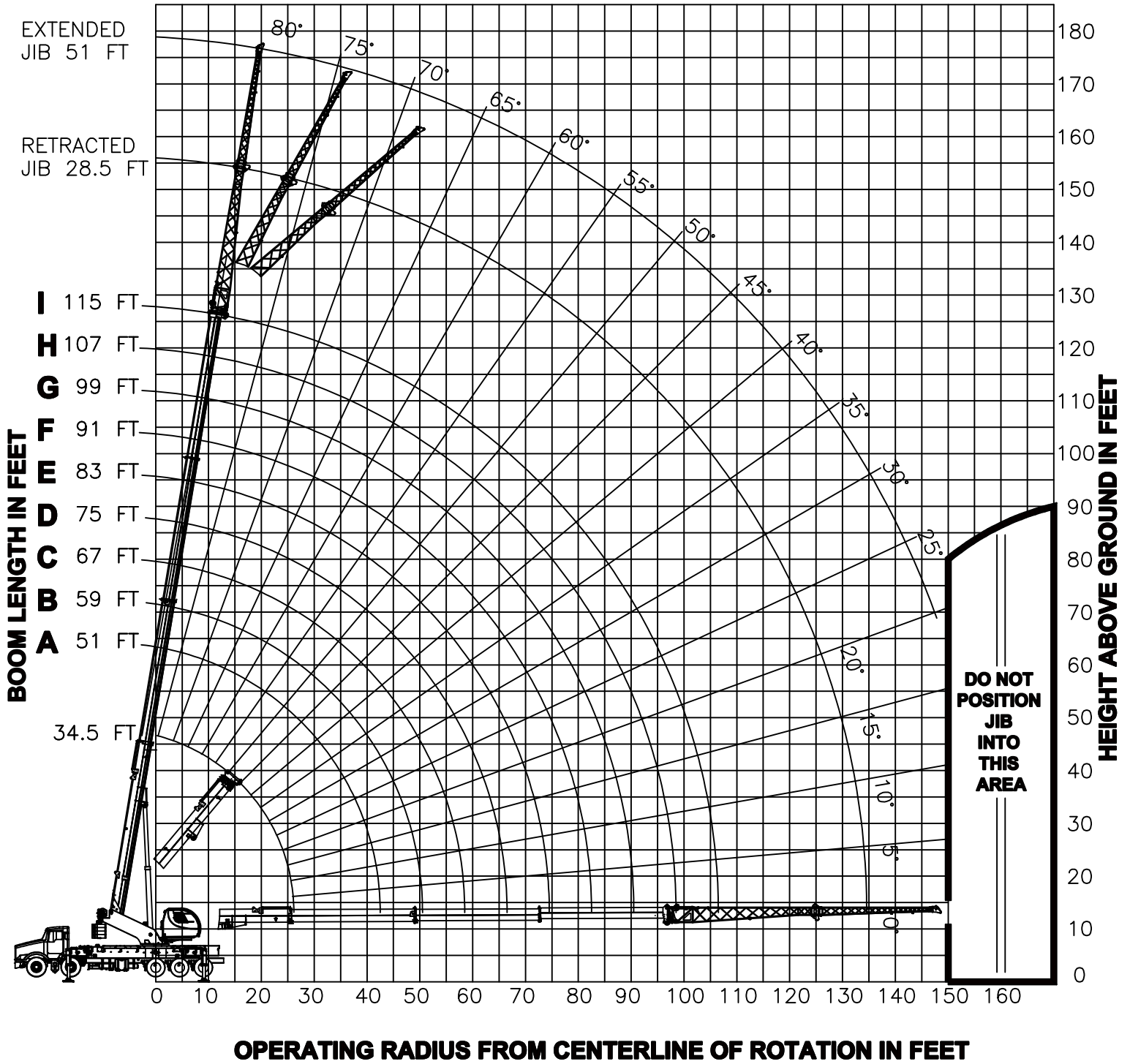
**31 FT RETRACTED TELESCOPIC JIB LIFTING CAPACITIES**

LOAD RADIUS (FT)	0° OFFSET		20° OFFSET		40° OFFSET	
	LOADED BOOM ANGLE (DEG)	CODE 25A OVER REAR (LBS)	LOADED BOOM ANGLE (DEG)	CODE 26A OVER REAR (LBS)	LOADED BOOM ANGLE (DEG)	CODE 27A OVER REAR (LBS)
35	76.4	11000				
40	74.2	10800	78.3	8850		
45	72.0	10600	76.1	8600	79.4	6600
50	69.8	10350	73.8	8350	77.1	6400
55	67.6	9900	71.5	8100	74.8	6300
60	65.3	9250	69.2	7800	72.4	6150
65	63.0	8000	66.9	7250	69.9	6050
70	60.6	7000	64.5	6850	67.4	5900
75	58.2	6000	62.0	6400	64.8	5800
80	55.7	5000	59.5	5600	62.2	5400
85	53.1	4300	56.8	4800	59.4	5200
90	50.4	3700	54.1	4000	56.6	4400
95	47.6	2900	51.3	3400	53.6	3700
100	44.7	2400	48.4	2800	50.5	2800
105	41.7	1800	45.2	2000	47.1	2100
110	38.4	1300	41.9	1500	43.5	1500
115			38.3	900	39.5	1000
120						
125						
130						
135						
140						
145						
150						
155						

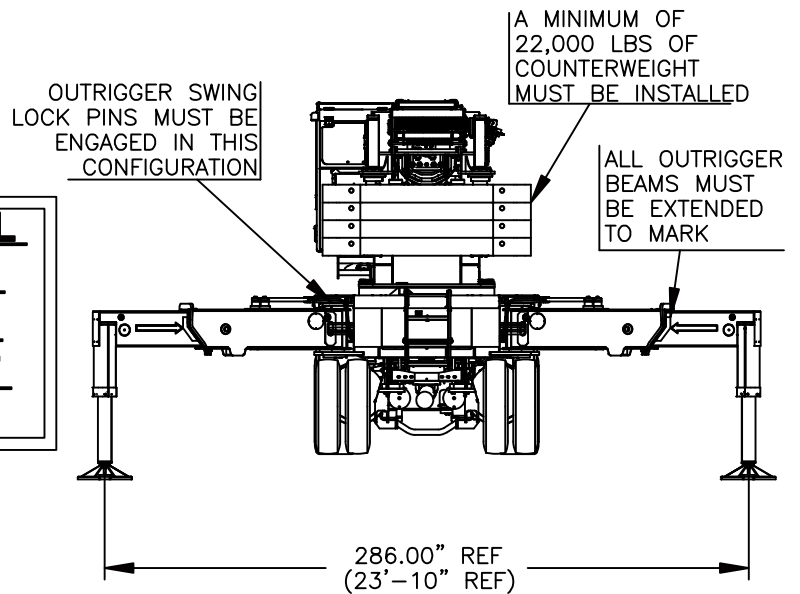
**53 FT EXTENDED TELESCOPIC JIB LIFTING CAPACITIES**

LOAD RADIUS (FT)	0° OFFSET		20° OFFSET		40° OFFSET	
	LOADED BOOM ANGLE (DEG)	CODE 37A OVER REAR (LBS)	LOADED BOOM ANGLE (DEG)	CODE 38A OVER REAR (LBS)	LOADED BOOM ANGLE (DEG)	CODE 39A OVER REAR (LBS)
35	78.2	7000				
40	76.3	6800				
45	74.5	6600				
50	72.6	6400	78.6	4750		
55	70.6	6150	76.6	4600		
60	68.7	5950	74.7	4500		
65	66.7	5750	72.7	4350	77.7	3350
70	64.7	5550	70.7	4250	75.6	3300
75	62.7	5300	68.6	4100	73.4	3200
80	60.6	5100	66.5	3950	71.2	3150
85	58.5	4900	64.3	3850	68.9	3050
90	56.4	4400	62.1	3700	66.6	3000
95	54.2	3900	59.9	3600	64.2	2950
100	51.9	3300	57.6	3450	61.7	2900
105	49.5	2800	55.2	3300	59.2	2800
110	47.1	2300	52.7	2900	56.5	2750
115	44.6	2000	50.1	2300	53.6	2700
120	41.9	1500	47.3	2000	50.6	2300
125	39.1	1100	44.4	1450	47.4	1800
130			41.3	1200	43.9	1400
135					40.1	950
140						
145						
150						
155						

# - RANGE DIAGRAM - BI-FOLD JIB



**USE THIS CHART ONLY WHEN ALL OUTRIGGER BEAMS ARE IN THE FULL EXTENDED POSITION AND 22,000 LBS OF COUNTERWEIGHT ARE IN USE**



**28.5 FT BI-FOLD JIB LIFTING CAPACITIES**

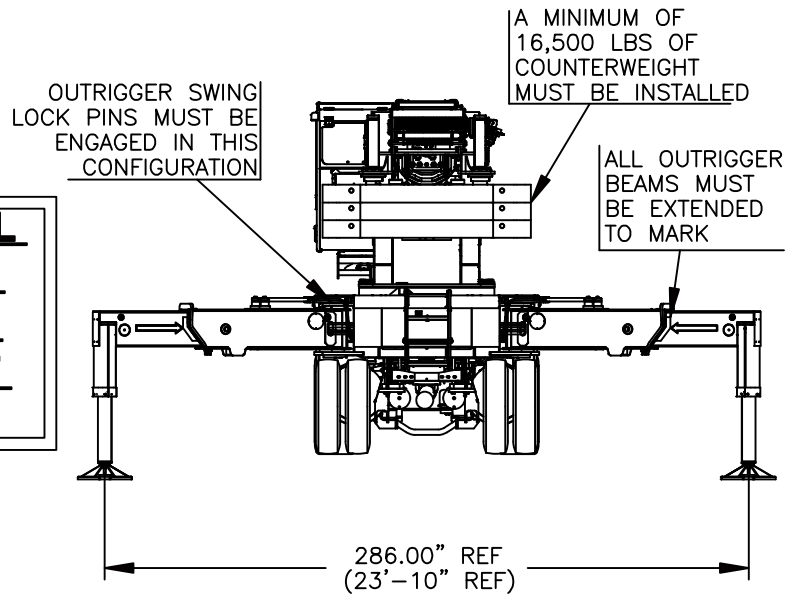
LOAD RADIUS (FT)	0° OFFSET		20° OFFSET		40° OFFSET	
	LOADED BOOM ANGLE (DEG)	CODE 56A OVER REAR (LBS)	LOADED BOOM ANGLE (DEG)	CODE 57A OVER REAR (LBS)	LOADED BOOM ANGLE (DEG)	CODE 58A OVER REAR (LBS)
35	76.1	12100				
40	73.9	12100				
45	71.7	12100	75.5	9900		
50	69.5	11250	73.2	9450	76.2	7250
55	67.2	10150	70.9	9050	73.8	7050
60	64.8	9500	68.5	8600	71.4	6950
65	62.5	8800	66.1	8400	68.9	6850
70	60.0	8150	63.6	7950	66.3	6700
75	57.5	7500	61.1	7500	63.7	6600
80	55.0	7050	58.5	7050	61.0	6400
85	52.3	6400	55.8	6600	58.2	6050
90	49.6	5700	53.0	6150	55.3	5700
95	46.7	5300	50.1	5700	52.2	5400
100	43.7	4850	47.1	5400	48.9	5050
105	40.6	4650	43.8	5050	45.5	4850
110	37.2	4200	40.4	4850	41.7	4600
115	33.5	3750	36.6	4400		
120	29.4	3300	32.3	3950		
125	24.7	2650	27.4	3400		
130	19.0	2200	21.2	2850		
135	10.7	1750				
140						
145						
150						
155						

**51 FT BI-FOLD JIB LIFTING CAPACITIES**

LOAD RADIUS (FT)	0° OFFSET		20° OFFSET		40° OFFSET	
	LOADED BOOM ANGLE (DEG)	CODE 68A OVER REAR (LBS)	LOADED BOOM ANGLE (DEG)	CODE 69A OVER REAR (LBS)	LOADED BOOM ANGLE (DEG)	CODE 70A OVER REAR (LBS)
35						
40	76.2	7700				
45	74.3	7500				
50	72.4	7050				
55	70.5	6600	76.4	4050		
60	68.5	6300	74.4	3950		
65	66.5	5950	72.4	3850	77.3	3050
70	64.5	5500	70.3	3750	75.1	2950
75	62.5	5200	68.2	3650	72.9	2850
80	60.4	4950	66.1	3500	70.7	2800
85	58.2	4750	63.9	3400	68.4	2750
90	56.1	4400	61.7	3300	66.1	2700
95	53.8	4200	59.4	3200	63.6	2650
100	51.5	3950	57.1	3100	61.7	2600
105	49.1	3750	54.6	2950	58.5	2550
110	46.7	3500	52.1	2850	55.8	2500
115	44.1	3400	49.5	2750	52.9	2450
120	41.4	3300	46.7	2650	49.8	2400
125	38.5	3150	43.7	2600	46.5	2350
130	35.5	2950	40.6	2550	43.0	2300
135	32.2	2750	37.1	2500		
140	28.5	2550	33.3	2400		
145	24.4	2200	28.9	2300		
150	19.5	1950	23.4	2100		
155	13.0	1650				



**USE THIS CHART ONLY WHEN ALL OUTRIGGER BEAMS ARE IN THE FULL EXTENDED POSITION AND 16,500 LBS OF COUNTERWEIGHT ARE IN USE**



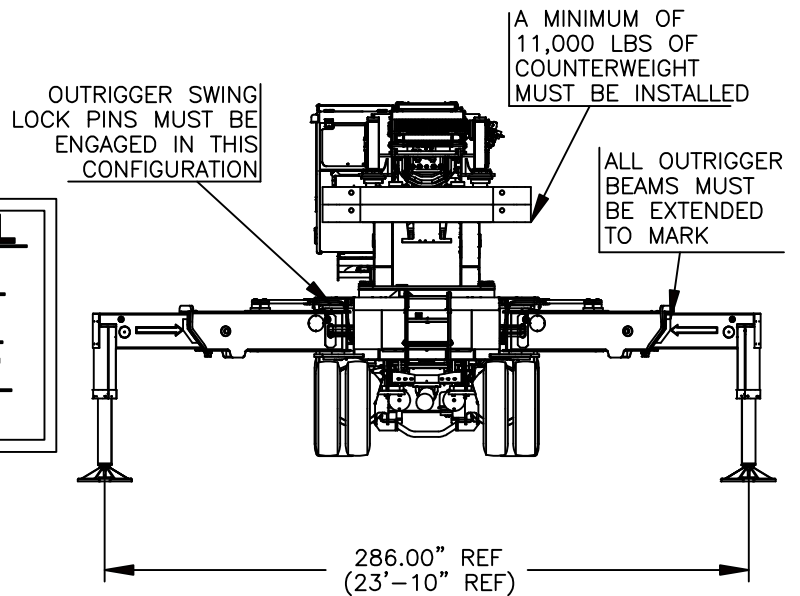
**28.5 FT BI-FOLD JIB LIFTING CAPACITIES**

LOAD RADIUS (FT)	0° OFFSET		20° OFFSET		40° OFFSET	
	LOADED BOOM ANGLE (DEG)	CODE 59A OVER REAR (LBS)	LOADED BOOM ANGLE (DEG)	CODE 60A OVER REAR (LBS)	LOADED BOOM ANGLE (DEG)	CODE 61A OVER REAR (LBS)
35	76.1	12100				
40	73.9	12100				
45	71.7	12100	75.5	9900		
50	69.5	11250	73.2	9450	76.2	7250
55	67.2	10150	70.9	9050	73.8	7050
60	64.8	9500	68.5	8600	71.4	6950
65	62.5	8800	66.1	8400	68.9	6850
70	60.0	8150	63.6	7950	66.3	6700
75	57.5	7500	61.1	7500	63.7	6600
80	55.0	7050	58.5	7050	61.0	6400
85	52.3	6400	55.8	6600	58.2	6050
90	49.6	5700	53.0	6150	55.3	5700
95	46.7	5300	50.1	5700	52.2	5400
100	43.7	4850	47.1	5400	48.9	5050
105	40.6	4650	43.8	5050	45.5	4850
110	37.2	4200	40.4	4850	41.7	4600
115	33.5	3750	36.6	4400		
120	29.4	3300	32.3	3950		
125	24.7	2650	27.4	3400		
130	19.0	2200	21.2	2850		
135	10.7	1750				
140						
145						
150						
155						

**51 FT BI-FOLD JIB LIFTING CAPACITIES**

LOAD RADIUS (FT)	0° OFFSET		20° OFFSET		40° OFFSET	
	LOADED BOOM ANGLE (DEG)	CODE 71A OVER REAR (LBS)	LOADED BOOM ANGLE (DEG)	CODE 72A OVER REAR (LBS)	LOADED BOOM ANGLE (DEG)	CODE 73A OVER REAR (LBS)
35						
40	76.2	7700				
45	74.3	7500				
50	72.4	7050				
55	70.5	6600	76.4	4050		
60	68.5	6300	74.4	3950		
65	66.5	5950	72.4	3850	77.3	3050
70	64.5	5500	70.3	3750	75.1	2950
75	62.5	5200	68.2	3650	72.9	2850
80	60.4	4950	66.1	3500	70.7	2800
85	58.2	4750	63.9	3400	68.4	2750
90	56.1	4400	61.7	3300	66.1	2700
95	53.8	4200	59.4	3200	63.6	2650
100	51.5	3950	57.1	3100	61.7	2600
105	49.1	3750	54.6	2950	58.5	2550
110	46.7	3500	52.1	2850	55.8	2500
115	44.1	3400	49.5	2750	52.9	2450
120	41.4	3300	46.7	2650	49.8	2400
125	38.5	3150	43.7	2600	46.5	2350
130	35.5	2950	40.6	2550	43.0	2300
135	32.2	2750	37.1	2500		
140	28.5	2550	33.3	2400		
145	24.4	2200	28.9	2300		
150	19.5	1950	23.4	2100		
155	13.0	1650				

**USE THIS CHART ONLY WHEN ALL OUTRIGGER BEAMS ARE IN THE FULL EXTENDED POSITION AND 11,000 LBS OF COUNTERWEIGHT ARE IN USE**



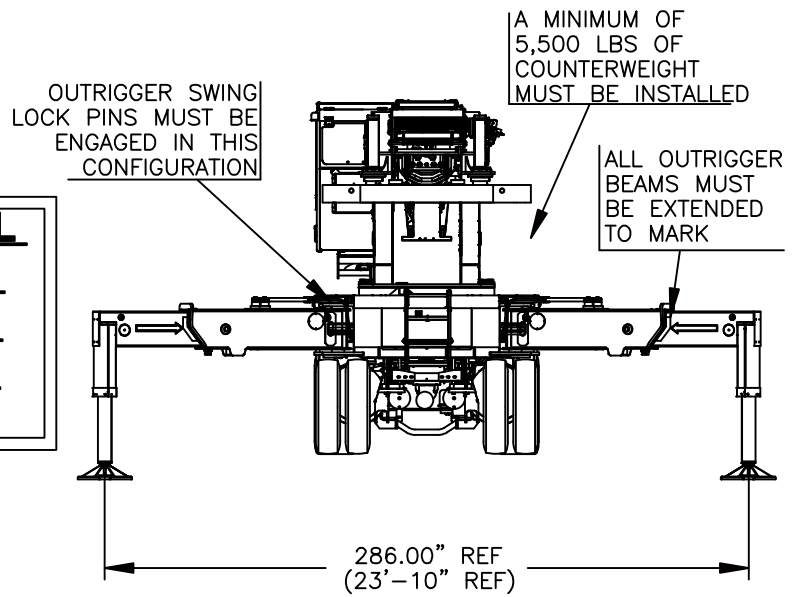
**28.5 FT BI-FOLD JIB LIFTING CAPACITIES**

LOAD RADIUS (FT)	0° OFFSET		20° OFFSET		40° OFFSET	
	LOADED BOOM ANGLE (DEG)	CODE 62A OVER REAR (LBS)	LOADED BOOM ANGLE (DEG)	CODE 63A OVER REAR (LBS)	LOADED BOOM ANGLE (DEG)	CODE 64A OVER REAR (LBS)
35	76.1	12100				
40	73.9	12100				
45	71.7	12100	75.5	9900		
50	69.5	11250	73.2	9450	76.2	7250
55	67.2	10150	70.9	9050	73.8	7050
60	64.8	9500	68.5	8600	71.4	6950
65	62.5	8800	66.1	8400	68.9	6850
70	60.0	8150	63.6	7950	66.3	6700
75	57.5	7500	61.1	7500	63.7	6600
80	55.0	7050	58.5	7050	61.0	6400
85	52.3	6400	55.8	6600	58.2	6050
90	49.6	5700	53.0	6150	55.3	5700
95	46.7	5300	50.1	5700	52.2	5400
100	43.7	4850	47.1	5020	48.9	5050
105	40.6	4400	43.8	4510	45.5	4700
110	37.2	3750	40.4	3990	41.7	4260
115	33.5	3300	36.6	3440		
120	29.4	2850	32.3	2880		
125	24.7	2350	27.4	2410		
130	19.0	1950	21.2	1950		
135	10.7	1500				
140						
145						
150						
155						

**51 FT BI-FOLD JIB LIFTING CAPACITIES**

LOAD RADIUS (FT)	0° OFFSET		20° OFFSET		40° OFFSET	
	LOADED BOOM ANGLE (DEG)	CODE 74A OVER REAR (LBS)	LOADED BOOM ANGLE (DEG)	CODE 75A OVER REAR (LBS)	LOADED BOOM ANGLE (DEG)	CODE 76A OVER REAR (LBS)
35						
40	76.2	7700				
45	74.3	7500				
50	72.4	7050				
55	70.5	6600	76.4	4050		
60	68.5	6300	74.4	3950		
65	66.5	5950	72.4	3850	77.3	3050
70	64.5	5500	70.3	3750	75.1	2950
75	62.5	5200	68.2	3650	72.9	2850
80	60.4	4950	66.1	3500	70.7	2800
85	58.2	4750	63.9	3400	68.4	2750
90	56.1	4400	61.7	3300	66.1	2700
95	53.8	4200	59.4	3200	63.6	2650
100	51.5	3950	57.1	3100	61.7	2600
105	49.1	3750	54.6	2950	58.5	2550
110	46.7	3500	52.1	2850	55.8	2500
115	44.1	3400	49.5	2750	52.9	2450
120	41.4	3300	46.7	2650	49.8	2400
125	38.5	3150	43.7	2600	46.5	2350
130	35.5	2850	40.6	2550	43.0	2300
135	32.2	2550	37.1	2500		
140	28.5	2200	33.3	2400		
145	24.4	1900	28.9	2100		
150	19.5	1550	23.4	1750		
155	13.0	1300				

**USE THIS CHART ONLY WHEN ALL OUTRIGGER BEAMS ARE IN THE FULL EXTENDED POSITION AND 5,500 LBS OF COUNTERWEIGHT ARE IN USE**



**28.5 FT BI-FOLD JIB LIFTING CAPACITIES**

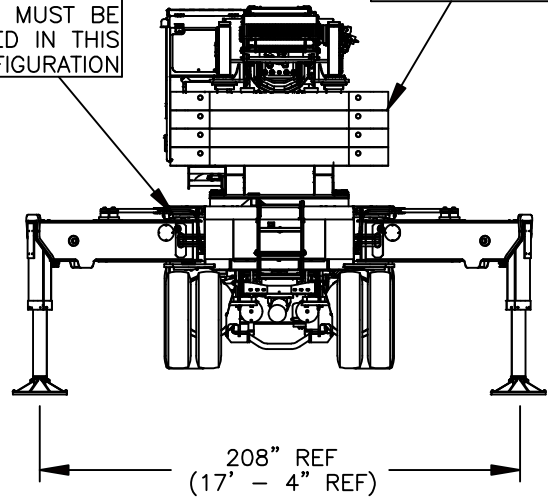
LOAD RADIUS (FT)	0° OFFSET		20° OFFSET		40° OFFSET	
	LOADED BOOM ANGLE (DEG)	CODE 65A OVER REAR (LBS)	LOADED BOOM ANGLE (DEG)	CODE 66A OVER REAR (LBS)	LOADED BOOM ANGLE (DEG)	CODE 67A OVER REAR (LBS)
35	76.1	12100				
40	73.9	12100				
45	71.7	12100	75.5	9900		
50	69.5	11250	73.2	9450	76.2	7250
55	67.2	10150	70.9	9050	73.8	7050
60	64.8	9500	68.5	8600	71.4	6950
65	62.5	8800	66.1	8400	68.9	6850
70	60.0	8150	63.6	7950	66.3	6700
75	57.5	7500	61.1	7500	63.7	6600
80	55.0	6900	58.5	7050	61.0	6400
85	52.3	6070	55.8	6400	58.2	6050
90	49.6	5390	53.0	5770	55.3	5700
95	46.7	4550	50.1	5090	52.2	5080
100	43.7	3920	47.1	4260	48.9	4560
105	40.6	3430	43.8	3730	45.5	3840
110	37.2	2740	40.4	3200	41.7	3160
115	33.5	2300	36.6	2660		
120	29.4	1860	32.3	2130		
125	24.7	1420	27.4	1600		
130	19.0	1070	21.2	1210		
135						
140						
145						
150						
155						

**51 FT BI-FOLD JIB LIFTING CAPACITIES**

LOAD RADIUS (FT)	0° OFFSET		20° OFFSET		40° OFFSET	
	LOADED BOOM ANGLE (DEG)	CODE 77A OVER REAR (LBS)	LOADED BOOM ANGLE (DEG)	CODE 78A OVER REAR (LBS)	LOADED BOOM ANGLE (DEG)	CODE 79A OVER REAR (LBS)
35						
40	76.2	7700				
45	74.3	7500				
50	72.4	7050				
55	70.5	6600	76.4	4050		
60	68.5	6300	74.4	3950		
65	66.5	5950	72.4	3850	77.3	3050
70	64.5	5500	70.3	3750	75.1	2950
75	62.5	5200	68.2	3650	72.9	2850
80	60.4	4950	66.1	3500	70.7	2800
85	58.2	4750	63.9	3400	68.4	2750
90	56.1	4400	61.7	3300	66.1	2700
95	53.8	4200	59.4	3200	63.6	2650
100	51.5	3950	57.1	3100	61.7	2600
105	49.1	3750	54.6	2950	58.5	2550
110	46.7	3500	52.1	2850	55.8	2500
115	44.1	3300	49.5	2750	52.9	2450
120	41.4	2850	46.7	2650	49.8	2400
125	38.5	2500	43.7	2600	46.5	2350
130	35.5	2100	40.6	2450	43.0	2300
135	32.2	1750	37.1	2100		
140	28.5	1400	33.3	1750		
145	24.4	1100	28.9	1400		
150	19.5	850	23.4	1000		
155						

A MINIMUM OF 22,000 LBS OF COUNTERWEIGHT MUST BE INSTALLED

OUTRIGGER SWING LOCK PINS MUST BE ENGAGED IN THIS CONFIGURATION



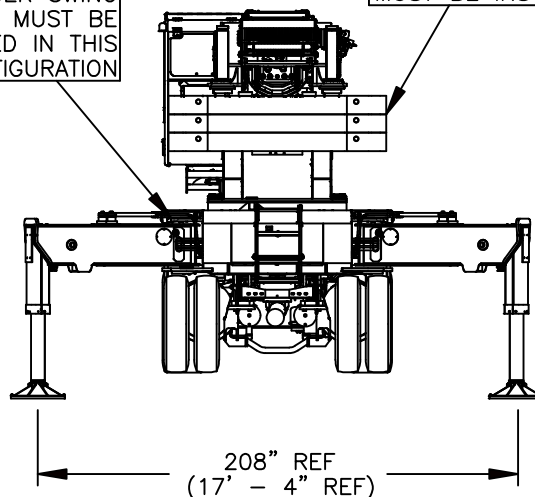
**USE THIS CHART ONLY WHEN ALL OUTRIGGER BEAMS ARE IN THE RETRACTED POSITION AND 22,000 LBS OF COUNTERWEIGHT ARE IN USE**

### MAIN BOOM LIFTING CAPACITIES

LMI OPERATING CODE 51A																					
BOOM LENGTH																					
34.5 FT		A 51 FT		B 59 FT		C 67 FT		D 75 FT		E 83 FT		F 91 FT		G 99 FT		H 107 FT		I 115 FT			
RAD (FT)	BOOM ANGLE (DEG)	FULL 360° (LBS)	BOOM ANGLE (DEG)	FULL 360° (LBS)	BOOM ANGLE (DEG)	FULL 360° (LBS)	BOOM ANGLE (DEG)	FULL 360° (LBS)	BOOM ANGLE (DEG)	FULL 360° (LBS)	BOOM ANGLE (DEG)	FULL 360° (LBS)	BOOM ANGLE (DEG)	FULL 360° (LBS)	BOOM ANGLE (DEG)	FULL 360° (LBS)	BOOM ANGLE (DEG)	FULL 360° (LBS)	BOOM ANGLE (DEG)	FULL 360° (LBS)	RAD (FT)
8	67.0	140000	75.4	80000	77.5	77200	79.6	74600													8
10	63.2	120000	73.0	80000	75.5	75200	77.9	70800													10
12	59.2	105750	70.6	80000	73.5	73150	76.2	67150	78.0	60400											12
15	52.8	87100	66.8	78400	70.5	69500	73.6	61900	75.7	56350	77.7	51450	79.0	46000							15
20	40.2	63150	60.2	62800	64.6	57700	69.0	53700	71.6	49400	74.2	45900	75.9	41550	77.6	37850	78.6	33650			20
25	19.5	38750	53.0	40070	58.0	37430	64.0	40510	67.5	43150	70.3	40770	72.6	37250	74.7	34370	76.0	32000	77.6	30020	25
30			44.9	28430	52.0	27310	59.0	29290	62.9	28860	66.8	29890	69.3	33250	71.7	31100	73.5	29100	75.2	27500	30
35			35.1	21310	44.0	20040	53.4	21900	58.6	22060	62.8	22320	65.8	22320	68.7	22480	70.6	26350	72.7	25070	35
40			21.4	16370	35.6	15630	47.5	17030	53.1	16620	58.6	17610	62.0	17360	65.4	17860	67.8	17690	70.1	17940	40
45					24.0	12290	40.8	13420	48.0	13420	54.2	13980	58.1	13820	62.0	14140	64.7	14140	67.3	14220	45
50							32.7	10740	42.6	10980	49.4	11220	54.0	11060	58.5	11530	61.5	11370	64.5	11690	50
55							21.9	8720	36.0	8870	44.1	9030	49.4	8950	54.7	9330	58.2	9330	61.6	9560	55
60									27.7	7230	38.3	7380	44.6	7310	50.8	7680	54.7	7680	58.5	7830	60
65											31.4	6100	39.0	5880	46.5	6320	50.9	6250	55.2	6460	65
70											22.5	4950	32.2	4810	41.8	5090	46.8	5090	51.8	5300	70
75											10.0	4190	23.4	3780	36.7	4190	42.5	4190	48.2	4400	75
80													17.6	2940	30.7	3410	37.6	3340	44.4	3610	80
85															23.1	2790	31.7	2730	40.2	2920	85
90															9.5	2200	22.5	2080	35.5	2270	90
95																	19.0	1830	30.2	1890	95
100																			23.7	1480	100
105																			13.6	1140	105
STOWED TELESCOPIC JIB DEDUCTIONS FOR MAIN BOOM CAPACITIES																					
1600 LBS		1080 LBS		940 LBS		830 LBS		740 LBS		670 LBS		610 LBS		560 LBS		520 LBS		480 LBS			
STOWED BI-FOLD JIB DEDUCTIONS FOR MAIN BOOM CAPACITIES																					
1100 LBS		990 LBS		750 LBS		650 LBS		570 LBS		510 LBS		460 LBS		420 LBS		380 LBS		330 LBS			

A MINIMUM OF 16,500 LBS OF COUNTERWEIGHT MUST BE INSTALLED

OUTRIGGER SWING LOCK PINS MUST BE ENGAGED IN THIS CONFIGURATION



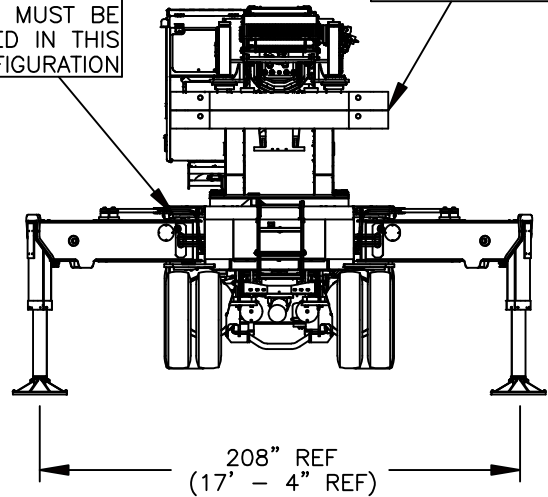
**USE THIS CHART ONLY WHEN ALL OUTRIGGER BEAMS ARE IN THE RETRACTED POSITION AND 16,500 LBS OF COUNTERWEIGHT ARE IN USE**

### MAIN BOOM LIFTING CAPACITIES

LMI OPERATING CODE 52A																					
BOOM LENGTH																					
34.5 FT		A 51 FT		B 59 FT		C 67 FT		D 75 FT		E 83 FT		F 91 FT		G 99 FT		H 107 FT		I 115 FT			
RAD (FT)	BOOM ANGLE (DEG)	FULL 360° (LBS)	BOOM ANGLE (DEG)	FULL 360° (LBS)	BOOM ANGLE (DEG)	FULL 360° (LBS)	BOOM ANGLE (DEG)	FULL 360° (LBS)	BOOM ANGLE (DEG)	FULL 360° (LBS)	BOOM ANGLE (DEG)	FULL 360° (LBS)	BOOM ANGLE (DEG)	FULL 360° (LBS)	BOOM ANGLE (DEG)	FULL 360° (LBS)	BOOM ANGLE (DEG)	FULL 360° (LBS)	BOOM ANGLE (DEG)	FULL 360° (LBS)	RAD (FT)
8	67.0	140000	75.4	80000	77.5	77200	79.6	74600													8
10	63.2	120000	73.0	80000	75.5	75200	77.9	70800													10
12	59.2	105750	70.6	80000	73.5	73150	76.2	67150	78.0	60400											12
15	52.8	87100	66.8	78400	70.5	69500	73.6	61900	75.7	56350	77.7	51450	79.0	46000							15
20	40.2	63150	60.2	62800	64.6	57700	69.0	53700	71.6	49400	74.2	45900	75.9	41550	77.6	37850	78.6	33650			20
25	19.5	38750	53.0	40070	58.0	37430	64.0	40510	67.5	43150	70.3	40770	72.6	37250	74.7	34370	76.0	32000	77.6	30020	25
30			44.9	28430	52.0	27310	59.0	29290	62.9	28860	66.8	29890	69.3	33250	71.7	31100	73.5	29100	75.2	27500	30
35			35.1	21310	44.0	20040	53.4	21900	58.6	22060	62.8	22320	65.8	22320	68.7	22480	70.6	26350	72.7	25070	35
40			21.4	16370	35.6	15630	47.5	17030	53.1	16620	58.6	17610	62.0	17360	65.4	17860	67.8	17690	70.1	17940	40
45					24.0	12290	40.8	13420	48.0	13420	54.2	13980	58.1	13820	62.0	14140	64.7	14140	67.3	14220	45
50							32.7	10740	42.6	10980	49.4	11220	54.0	11060	58.5	11530	61.5	11370	64.5	11690	50
55							21.9	8720	36.0	8870	44.1	9030	49.4	8950	54.7	9330	58.2	9330	61.6	9560	55
60									27.7	7230	38.3	7380	44.6	7310	50.8	7680	54.7	7680	58.5	7830	60
65											31.4	6100	39.0	5880	46.5	6320	50.9	6250	55.2	6460	65
70											22.5	4950	32.2	4810	41.8	5090	46.8	5090	51.8	5300	70
75											10.0	4190	23.4	3780	36.7	4190	42.5	4190	48.2	4400	75
80													17.6	2940	30.7	3410	37.6	3340	44.4	3610	80
85															23.1	2790	31.7	2730	40.2	2920	85
90															9.5	2200	22.5	2080	35.5	2270	90
95																	19.0	1830	30.2	1890	95
100																			23.7	1480	100
105																			13.6	1140	105
STOWED TELESCOPIC JIB DEDUCTIONS FOR MAIN BOOM CAPACITIES																					
1600 LBS		1080 LBS		940 LBS		830 LBS		740 LBS		670 LBS		610 LBS		560 LBS		520 LBS		480 LBS			
STOWED BI-FOLD JIB DEDUCTIONS FOR MAIN BOOM CAPACITIES																					
1100 LBS		990 LBS		750 LBS		650 LBS		570 LBS		510 LBS		460 LBS		420 LBS		380 LBS		330 LBS			

A MINIMUM OF 11,000 LBS OF COUNTERWEIGHT MUST BE INSTALLED

OUTRIGGER SWING LOCK PINS MUST BE ENGAGED IN THIS CONFIGURATION



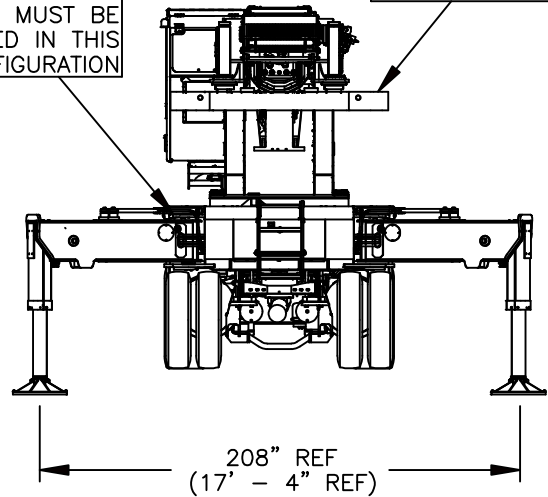
**USE THIS CHART ONLY WHEN ALL OUTRIGGER BEAMS ARE IN THE RETRACTED POSITION AND 11,000 LBS OF COUNTERWEIGHT ARE IN USE**

### MAIN BOOM LIFTING CAPACITIES

LMI OPERATING CODE 53A																					
BOOM LENGTH																					
RAD (FT)	34.5 FT		A 51 FT		B 59 FT		C 67 FT		D 75FT		E 83 FT		F 91 FT		G 99 FT		H 107 FT		I 115 FT		RAD (FT)
	BOOM ANGLE (DEG)	FULL 360° (LBS)	BOOM ANGLE (DEG)	FULL 360° (LBS)	BOOM ANGLE (DEG)	FULL 360° (LBS)	BOOM ANGLE (DEG)	FULL 360° (LBS)	BOOM ANGLE (DEG)	FULL 360° (LBS)	BOOM ANGLE (DEG)	FULL 360° (LBS)	BOOM ANGLE (DEG)	FULL 360° (LBS)	BOOM ANGLE (DEG)	FULL 360° (LBS)	BOOM ANGLE (DEG)	FULL 360° (LBS)	BOOM ANGLE (DEG)	FULL 360° (LBS)	
8	67.0	132300	75.4	80000	77.5	77200	79.6	74600													8
10	63.2	120000	73.0	80000	75.5	75200	77.9	70800													10
12	59.2	104100	70.6	80000	73.5	73150	76.2	67150	78.0	60400											12
15	52.8	83700	66.8	78400	70.5	69500	73.6	61900	75.7	56350	77.7	51450	79.0	46000							15
20	40.2	53010	60.2	55350	64.6	57100	69.0	53250	71.6	49200	74.2	45900	75.9	41550	77.6	37850	78.6	33650			20
25	19.5	34350	53.0	35400	58.0	33020	64.0	36110	67.5	36110	70.3	35670	72.6	36850	74.7	34030	76.0	31750	77.6	29720	25
30			44.9	24810	52.0	23950	59.0	25840	62.9	25320	66.8	26530	69.3	25840	71.7	26190	73.5	29100	75.2	27500	30
35			35.1	18530	44.0	17260	53.4	19030	58.6	19370	62.8	19540	65.8	19710	68.7	19870	70.6	19710	72.7	20040	35
40			21.4	13990	35.6	13410	47.5	14650	53.1	14480	58.6	15220	62.0	15220	65.4	15630	67.8	15630	70.1	15880	40
45					24.0	10450	40.8	11490	48.0	11490	54.2	12050	58.1	11890	62.0	12370	64.7	12210	67.3	12540	45
50							32.7	9020	42.6	9330	49.4	9490	54.0	9490	58.5	9800	61.5	9880	64.5	10200	50
55							21.9	7190	36.0	7420	44.1	7570	49.4	7570	54.7	7880	58.2	7960	61.6	8260	55
60									27.7	5960	38.3	6110	44.6	6040	50.8	6410	54.7	6410	58.5	6640	60
65											31.4	4940	39.0	4790	46.5	5160	50.9	5160	55.2	5370	65
70											22.5	3890	32.2	3820	41.8	4170	46.8	4170	51.8	4380	70
75											10.0	3160	23.4	2960	36.7	3330	42.5	3300	48.2	3510	75
80													17.6	2540	30.7	2670	37.6	2610	44.4	2810	80
85															23.1	2080	31.7	2010	40.2	2210	85
90															9.5	1570	22.5	1410	35.5	1700	90
95																	19.0	1220	30.2	1280	95
100																					100
105																					105
STOWED TELESCOPIC JIB DEDUCTIONS FOR MAIN BOOM CAPACITIES																					
1600 LBS		1080 LBS		940 LBS		830 LBS		740 LBS		670 LBS		610 LBS		560 LBS		520 LBS		480 LBS			
STOWED BI-FOLD JIB DEDUCTIONS FOR MAIN BOOM CAPACITIES																					
1100 LBS		990 LBS		750 LBS		650 LBS		570 LBS		510 LBS		460 LBS		420 LBS		380 LBS		330 LBS			

A MINIMUM OF 5,500 LBS OF COUNTERWEIGHT MUST BE INSTALLED

OUTRIGGER SWING LOCK PINS MUST BE ENGAGED IN THIS CONFIGURATION

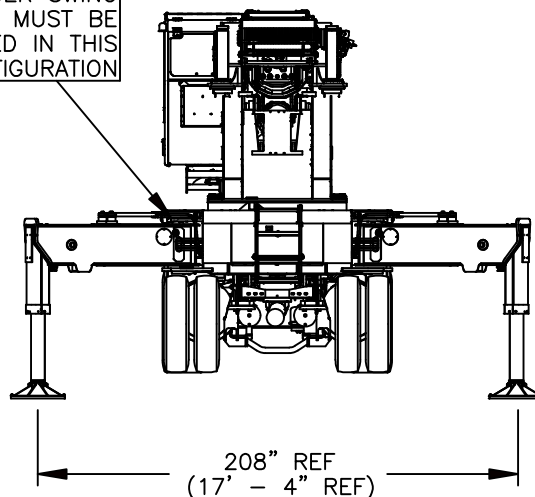


**USE THIS CHART ONLY WHEN ALL OUTRIGGER BEAMS ARE IN THE RETRACTED POSITION AND 5,500 LBS OF COUNTERWEIGHT ARE IN USE**

### MAIN BOOM LIFTING CAPACITIES

LMI OPERATING CODE 54A																					
BOOM LENGTH																					
34.5 FT		A 51 FT		B 59 FT		C 67 FT		D 75 FT		E 83 FT		F 91 FT		G 99 FT		H 107 FT		I 115 FT			
RAD (FT)	BOOM ANGLE (DEG)	FULL 360° (LBS)	BOOM ANGLE (DEG)	FULL 360° (LBS)	BOOM ANGLE (DEG)	FULL 360° (LBS)	BOOM ANGLE (DEG)	FULL 360° (LBS)	BOOM ANGLE (DEG)	FULL 360° (LBS)	BOOM ANGLE (DEG)	FULL 360° (LBS)	BOOM ANGLE (DEG)	FULL 360° (LBS)	BOOM ANGLE (DEG)	FULL 360° (LBS)	BOOM ANGLE (DEG)	FULL 360° (LBS)	BOOM ANGLE (DEG)	FULL 360° (LBS)	RAD (FT)
8	67.0	132300	75.4	80000	77.5	77200	79.6	74600													8
10	63.2	120000	73.0	80000	75.5	75200	77.9	70800													10
12	59.2	102750	70.6	80000	73.5	73150	76.2	67150	78.0	60400											12
15	52.8	72900	66.8	70560	70.5	62550	73.6	61900	75.7	56350	77.7	51450	79.0	46000							15
20	40.2	45720	60.2	48060	64.6	46170	69.0	47520	71.6	44100	74.2	41310	75.9	37390	77.6	37850	78.6	33650			20
25	19.5	29150	53.0	30470	58.0	28530	64.0	31440	67.5	31530	70.3	31530	72.6	31440	74.7	29970	76.0	27960	77.6	26180	25
30			44.9	21190	52.0	20410	59.0	22220	62.9	21960	66.8	23080	69.3	22740	71.7	23170	73.5	22830	75.2	23080	30
35			35.1	15580	44.0	14650	53.4	16170	58.6	16590	62.8	16840	65.8	17010	68.7	17300	70.6	17180	72.7	17520	35
40			21.4	11680	35.6	11110	47.5	12340	53.1	12180	58.6	12960	62.0	12920	65.4	13410	67.8	13410	70.1	13740	40
45					24.0	8520	40.8	9480	48.0	9560	54.2	10040	58.1	10040	62.0	10450	64.7	10450	67.3	10770	45
50							32.7	7370	42.6	7610	49.4	7840	54.0	7840	58.5	8230	61.5	8230	64.5	8550	50
55							21.9	5770	36.0	5970	44.1	6160	49.4	6120	54.7	6500	58.2	6500	61.6	6810	55
60									27.7	4700	38.3	4850	44.6	4810	50.8	5140	54.7	5140	58.5	5440	60
65											31.4	3780	39.0	3700	46.5	4070	50.9	4070	55.2	4280	65
70											22.5	2930	32.2	2830	41.8	3110	46.8	3180	51.8	3360	70
75											10.0	2340	23.4	2060	36.7	2400	42.5	2400	48.2	2610	75
80													17.6	1740	30.7	1800	37.6	1800	44.4	2000	80
85															23.1	1300	31.7	1300	40.2	1490	85
90																			35.5	1040	90
95																					95
100																					100
105																					105
STOWED TELESCOPIC JIB DEDUCTIONS FOR MAIN BOOM CAPACITIES																					
1600 LBS		1080 LBS		940 LBS		830 LBS		740 LBS		670 LBS		610 LBS		560 LBS		520 LBS		480 LBS			
STOWED BI-FOLD JIB DEDUCTIONS FOR MAIN BOOM CAPACITIES																					
1100 LBS		990 LBS		750 LBS		650 LBS		570 LBS		510 LBS		460 LBS		420 LBS		380 LBS		330 LBS			

OUTRIGGER SWING  
LOCK PINS MUST BE  
ENGAGED IN THIS  
CONFIGURATION



**USE THIS CHART ONLY WHEN ALL  
OUTRIGGER BEAMS ARE IN THE  
RETRACTED POSITION AND 0 LBS  
OF COUNTERWEIGHT ARE IN USE**

### MAIN BOOM LIFTING CAPACITIES

LMI OPERATING CODE 55A																					
BOOM LENGTH																					
34.5 FT		A 51 FT		B 59 FT		C 67 FT		D 75FT		E 83 FT		F 91 FT		G 99 FT		H 107 FT		I 115 FT			
RAD (FT)	BOOM ANGLE (DEG)	FULL 360° (LBS)	BOOM ANGLE (DEG)	FULL 360° (LBS)	BOOM ANGLE (DEG)	FULL 360° (LBS)	BOOM ANGLE (DEG)	FULL 360° (LBS)	BOOM ANGLE (DEG)	FULL 360° (LBS)	BOOM ANGLE (DEG)	FULL 360° (LBS)	BOOM ANGLE (DEG)	FULL 360° (LBS)	BOOM ANGLE (DEG)	FULL 360° (LBS)	BOOM ANGLE (DEG)	FULL 360° (LBS)	BOOM ANGLE (DEG)	FULL 360° (LBS)	RAD (FT)
8	67.0	132300	75.4	80000	77.5	77200	79.6	74600													8
10	63.2	120000	73.0	80000	75.5	75200	77.9	70800													10
12	59.2	91530	70.6	72000	73.5	65830	76.2	67150	78.0	60400											12
15	52.8	72900	66.8	70560	70.5	62550	73.6	55710	75.7	50710	77.7	46300	79.0	41400							15
20	40.2	38880	60.2	41310	64.6	39870	69.0	42840	71.6	41670	74.2	41310	75.9	37390	77.6	34060	78.6	30280			20
25	19.5	24480	53.0	25800	58.0	24130	64.0	26860	67.5	27210	70.3	27390	72.6	27480	74.7	27390	76.0	26860	77.6	26180	25
30			44.9	17660	52.0	17050	59.0	18690	62.9	18600	66.8	19640	69.3	19470	71.7	20070	73.5	19810	75.2	20160	30
35			35.1	12710	44.0	11960	53.4	13390	58.6	13810	62.8	14100	65.8	14400	68.7	14740	70.6	14650	72.7	15070	35
40			21.4	9380	35.6	8970	47.5	10040	53.1	9950	58.6	10700	62.0	10700	65.4	11190	67.8	11270	70.1	11600	40
45					24.0	6710	40.8	7590	48.0	7630	54.2	8110	58.1	8110	62.0	8560	64.7	8600	67.3	8920	45
50							32.7	5720	42.6	5960	49.4	6190	54.0	6190	58.5	6590	61.5	6660	64.5	6900	50
55							21.9	4360	36.0	4550	44.1	4700	49.4	4740	54.7	5050	58.2	5120	61.6	5350	55
60									27.7	3430	38.3	3580	44.6	3580	50.8	3880	54.7	3880	58.5	4170	60
65											31.4	2680	39.0	2610	46.5	2900	50.9	2900	55.2	3120	65
70											22.5	1910	32.2	1840	41.8	2120	46.8	2120	51.8	2330	70
75											10.0	1440	23.4	1230	36.7	1510	42.5	1510	48.2	1720	75
80															30.7	1000	37.6	1000	44.4	1200	80
85																					85
90																					90
95																					95
100																					100
105																					105
STOWED TELESCOPIC JIB DEDUCTIONS FOR MAIN BOOM CAPACITIES																					
1600 LBS		1080 LBS		940 LBS		830 LBS		740 LBS		670 LBS		610 LBS		560 LBS		520 LBS		480 LBS			
STOWED BI-FOLD JIB DEDUCTIONS FOR MAIN BOOM CAPACITIES																					
1100 LBS		990 LBS		750 LBS		650 LBS		570 LBS		510 LBS		460 LBS		420 LBS		380 LBS		330 LBS			