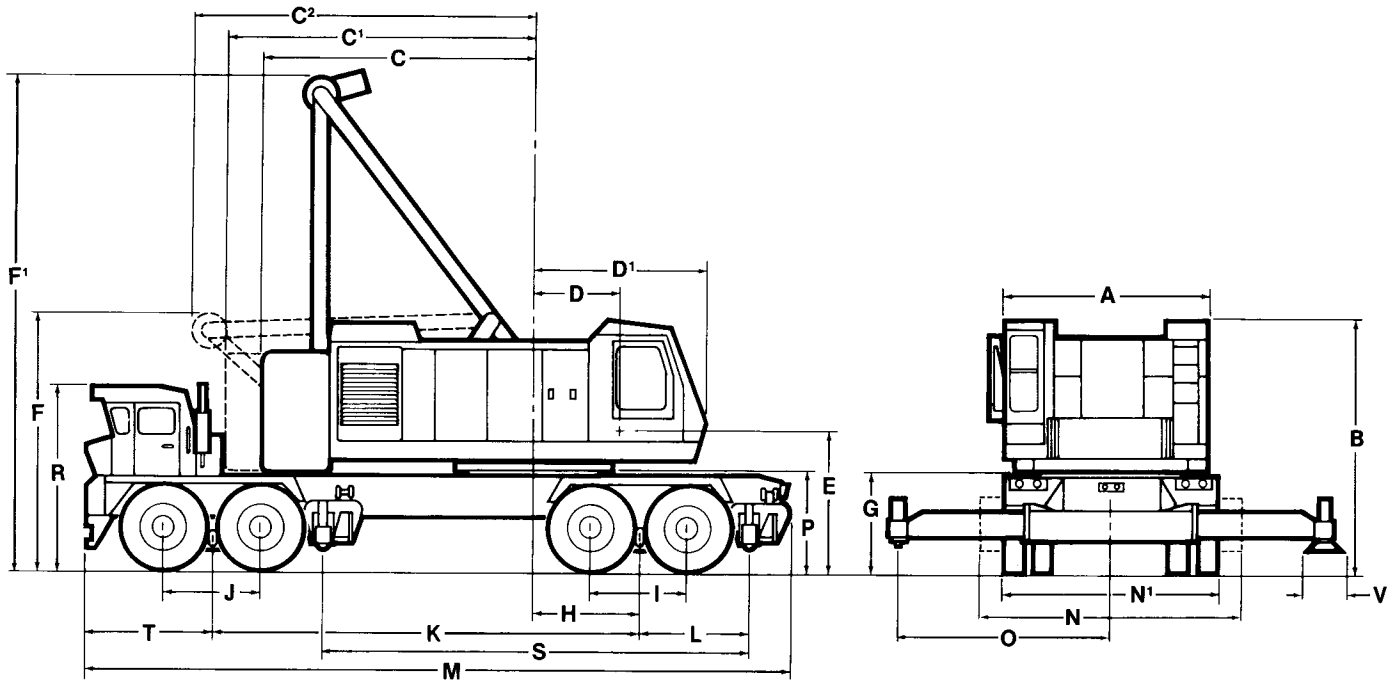


8470 CARRIER SPECIFICATION

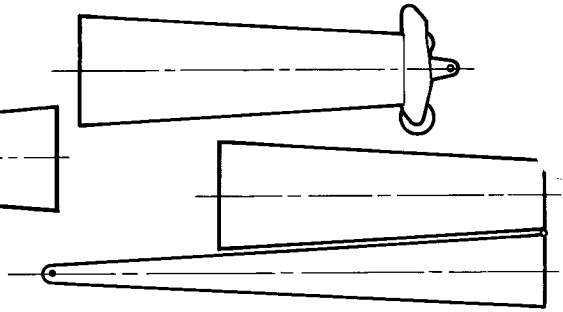
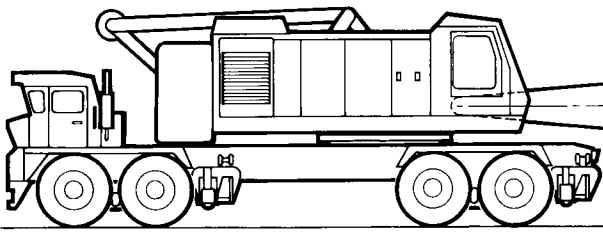


GENERAL DIMENSIONS

	Ft.	MM		Ft.	MM
A. Width of Cab	10'4"	3150 mm	L. Centerline of Rear Bogie to Centerline of Rear Outrigger	6'3 ³ / ₄ "	1924 mm
B. Height to Top of Cab	13'0"	3962 mm	M. Overall Length	36'1 ¹ / ₄ "	11004 mm
C. Tailswing Over Cwt. Retracted	14'0"	4267 mm	N. Width Over Outriggers Retracted	13'0"	3962 mm
C ₁ . Tailswing Over Cwt. Extended	16'0"	4876 mm	N ₁ . Width, Outriggers Removed	11'0"	3352 mm
C ₂ . Tailswing Over A-Frame Lowered	17'9 ¹ / ₂ "	54223 mm	O. Centerline of Rotation to Centerline of Outrigger Jack, Extended	12'0"	3657 mm
D. Centerline of Rotation to Centerline of Boom Foot	4'6"	1371 mm	P. Height Over Mounting Plate	5'0 ¹ / ₂ "	1536 mm
D ₁ . Centerline of Rotation to Front of Cab	8'10 ³ / ₄ "	2711 mm	R. Height Over Carrier Cab	9'4"	2845 mm
E. Ground to Centerline of Boom Foot	7'2 ³ / ₄ "	2203 mm	S. Centerline of Rear Outrigger to Centerline of Front Outrigger	22'0"	6705 mm
F. Height Over A-Frame Lowered	13'2"	4013 mm	T. Center of Rear Outrigger to Rear of Carrier	1'7 ¹ / ₂ "	495 mm
F ₁ . Height Over A-Frame Raised	25'2"	7670 mm	U. Distance from Front Bogie to Front Bumper	6'2"	1879 mm
G. Ground to Bottom of Cwt.	5'3 ¹ / ₂ "	1613 mm	V. Outrigger Float Diameter	3'6"	1066 mm
H. Centerline of Rotation to Centerline of Rear Bogie	5'6'1/2"	1682 mm	Turning Radius Over Front Bumper	65'0"	19812 mm
I. Distance Between Rear Axles	5'0"	1524 mm	Clearance Under Equalizing Beam	7'1/2"	190 mm
J. Distance Between Front Axles	5'0"	1524 mm	Clearance Under Differential	12"	304 mm
K. Centerline of Rear Bogie to Centerline of Front Bogie (Wheelbase)	22'0"	6705 mm			

8470 TRAVELING WEIGHTS

X = IN PLACE
O = REMOVED



BOOM REARWARD*

A Taper Tip Folded	B Block	C Outer Boom Hammer- head	D Inner Boom	E Counter- weight Retracted	F Front Out- rigger	G Rear Out- rigger	Front Tandem		Rear Tandem		Gross Weight	
							Lbs.	Kgs.	Lbs.	Kgs.	Lbs.	Kgs.
O	X	X	X	X	X	X	73310	33255	144580	65580	217890	98835
O	O	X	X	X	X	X	81490	36965	132800	60240	214290	97205
X	O	O	X	X	X	X	91900	41685	118850	53910	210750	95595
O	X	X	X	O	X	X	17850	8095	131540	59665	149390	67760
O	O	X	X	O	X	X	26030	11805	119760	54325	145790	66130
X	O	O	X	O	X	X	36440	16530	105800	47990	142240	64520
O	X	X	X	O	O	X	8650	3925	127830	57985	136480	61910
O	O	X	X	O	O	X	16830	7635	116060	52645	132890	60280
X	O	O	X	O	O	X	27250	12360	102100	46315	129350	58675
O	X	X	X	O	X	O	21330	9675	115960	52600	137290	62275
O	O	X	X	O	X	O	29500	13380	104190	47260	133690	60640
X	O	O	X	O	X	O	39920	18110	90230	40930	130150	59040
O	X	X	X	O	O	O	12130	5500	112260	50920	124390	56420
O	O	X	X	O	O	O	20300	9210	100480	45580	120780	54790
X	O	O	X	O	O	O	36630	16615	76480	34690	113110	51305
O	O	O	X	X	X	X	97820	44370	108790	49345	206610	93715
O	O	O	X	O	X	X	42360	19215	95750	43430	138110	62645
O	O	O	X	O	O	X	33160	15040	92050	41755	125210	56795
O	O	O	X	O	X	O	45830	20790	80180	36370	126010	57160
O	O	O	X	O	O	O	36630	16615	76480	34690	113110	51305
O	O	O	O	X	X	X	105480	47845	91920	41695	197400	89540
O	O	O	O	O	X	X	50030	22695	78880	35780	128910	58475
O	O	O	O	O	O	X	40830	18520	75180	34100	116010	52620
O	O	O	O	O	X	O	53500	24265	63310	28715	116810	52980
O	O	O	O	O	O	O	44300	20095	59610	27040	103910	47135

*NOTE: In all conditions the traveling weights for the front and rear tandem are more equally balanced with the boom foot facing the rear of the carrier.

NOTE: Due to back stability, full counterweight must not be swung over side of machine without outriggers extended and set.

ADDITIONAL WEIGHT REDUCTION

Item	Total Weight Adjustment (Lb)	Effect Per Item		Items Removed	Front Tandem (Lb)	Rear Tandem (Lb)	Gross Weight (Lb)
		Front Tandem (Lb)	Rear Tandem (Lb)				
H—Counterweight Beams Rollers and Pins	2,380 (1080 kg)	—1560 (708 kg)	— 820 (372 kg)	A thru H	42740 (19385 kg)	58790 (26665 kg)	101530 (46055 kg)
J—Laggings and Ropes, Main Hoist Drums	4,770 (2164 kg)	—1430 (649 kg)	—3340 (1575 kg)	A thru J	41310 (18740 kg)	55450 (25150 kg)	96760 (43890 kg)
K—Retractable A-Frame	4,700 (2132 kg)	—4070 (1846 kg)	— 630 (286 kg)	A thru K	37240 (16890 kg)	54820 (24865 kg)	92060 (41760 kg)
L—25% Full Upper Fuel Tank ... Was 50% Full	200 (91 kg)	— 130 (59 kg)	— 70 (32 kg)	A thru L	37110 (16835 kg)	54750	91860 (41670 kg)
M—Modular Operator's Cab	470	— 0	— 470	A thru M	37110 (16835 kg)	54280 (24620 kg)	91390 (41455 kg)
Carrier with outriggers and swing bearing — less upper					28030 (12714 kg)	51470 (23346 kg)	79500 (36060 kg)
Carrier with swing bearing — less upper and outriggers					22300 (10115 kg)	32200 (14605 kg)	54500 (24720 kg)

NOTE: Because of variable manufacturing tolerances a variance of ±3% should be allowed on these weights.
SEE OPERATOR'S MANUAL FOR MAXIMUM MPH TRAVEL SPEED RESTRICTIONS AS LIMITED BY TIRE LOADS.

8470 CARRIER SPECIFICATIONS

Specifications for AMERICAN MODEL 8470, 180 ton (163.3 M.T.), 264" (6706 mm) wheelbase, 8 x 4 carrier.

FRAME: Box welded frame members designed and manufactured to provide adequate support for crane weight and capacities; high strength alloy steel used throughout the construction of the carrier; tow bars are provided front and rear.

HYDRAULIC OUTRIGGERS: Two independent housings fabricated from 100,000 PSI 689475.7 kPa yield steel; outrigger beams with horizontal and vertical hydraulic movements; automatic check and manual shutoff valves in hydraulic jacks to assure maximum safety for all lifts; hardened chrome plated rams, fitted with 42" (1.067 mm) dia. spun high strength steel floats, pin connected and removable; maximum stroke of vertical jacks is 12 inches (305 mm) maximum lift under floats is 7 inches (179 mm) outrigger controls for RH outriggers on RH side of carrier and controls for LH outriggers on LH side.

ENGINE: Detroit Diesel (GM) 6V92TAC model 8067-7440 diesel engine, 6-cylinder, 4.84" (123 mm) bore, 5" (127 mm) stroke, 552 cu. in. (9.046 cu. cm) displacement, rated 305 HP at 2100 RPM

OPTIONAL ENGINE: Cummins NTC-350 diesel engine, 6 cylinder, 5-1/2" (140 mm) bore x 6" (152 mm) stroke, 855 cu. in. (14.011 cu. cm) displacement, rated 350 HP at 2100 RPM thermostatically controlled radiator shutters.

FUEL TANK: One 125 (U.S.) gallon (473 L) safety fuel tank.

ELECTRICAL: 12 volt system; 500 watt alternator; two —8D 12 volt batteries.

POWER STEERING: Garrison twin-ram hydraulic power steering with Ross cam, 20" (508 mm) dia. steering wheel.

CLUTCH: Spicer AS 1402, two plate, dry type, angle spring clutch hydraulically actuated.

MAIN TRANSMISSION: Fuller Model T955ALL modified to give 5+1 speeds forward and 1+1 reverse.

RATIOS:

Low 26.54:1	Fourth 1.16:1
First 6.35:1	Fifth 1.00:1
Second	... 3.75:1	Reverse 6.48:1
Third 2.04:1	Reverse Low	.. 27.09:1

AUXILIARY TRANSMISSION: Spicer Model 1241C, Four Speed.

RATIOS:

First 2.37:1
Second 1.24:1
Third 1.00:1
Fourth 0.81:1

FRONT AXLES: Shuler FTCA-34-L-30 in tandem, 48,000# highway capacity.

REAR AXLES: Clark planetary 91000 tandem assembly, non-spin differential on leading axle; ratio 9.00:1.

SUSPENSION: Hendrickson solid mount with rubber bushed torque rods front and rear.

PROPEL SHAFT: Spicer 1710 Series and 1810 Series.

SERVICE BRAKES: Air on all wheels with 14.5 C.F.M. air compressor and two reservoirs; lining area 20" (508 mm) x 7" (179 mm) (1000 sq. in., 6452 cm²) rear; 17-1/2" (445 mm) x 4" (102 mm) (495 sq. in., 3194 cm²) front; 1495 sq. in. (9645 cm²) total lining area.

EMERGENCY BRAKES: Spring set, air release system on both rear axles with operator's control on dash panel; air reservoir for release of spring set chambers.

WHEELS: Cast spoke front; rear integrally cast with axles; 10.00 x 24 rims.

TIRES: Michelin 14:00 x 24XVC.

CAB: One man cab 32" (813 mm) wide; fully enclosed offset to left side; hinged and removable panel for engine access; air cushion driver's seat.

STANDARD EQUIPMENT: West Coast type mirrors, air windshield wiper, windshield washer, heater, defroster, sealed beam oval headlights, front and rear directional signals, combination stop and taillights, backup lights, clearance lights on cab top and side, electrical and air horns, seat belts, dome light, indirect lighted instrument panel, speedometer, ammeter, fuel gauge, engine temperature indicator, air pressure gauge, oil pressure gauge, low air pressure warning signal, tachometer, and Tire Inflation Kit.

OPTIONAL ACCESSORIES:

Jacobs Engine Brake
Cold Weather Starting Kit
Back-Up Alarm
Front Outrigger
Front Bumper Counterweight
Spare Tire and Rim
Closed Rigging Box
Outrigger Float Racks
Remote Control of Outriggers
Remote Control of Carrier
10 x 4 (Three Axles Front)
12 x 4 (Three Axles Front Plus #4 Air Bag Axle)

PERFORMANCE:

Maximum Governed Speed 45 MPH (72 km/h)
Minimum Speed (1000 RPM) 0.26 MPH (.42 km/h)
Maximum Gradeability (Off Highway
With Counterweight)..... 25%

NOTE: In accordance with varying material situations, and the Company's policy of constant product improvement, these specifications are subject to change without notice and without incurring responsibility to units previously sold.



800 SERIES MODEL 8470 TRUCK CRANE

LIFT CRANE RATINGS IN POUNDS

With 77SL Tubular Chord Lattice Boom With Hammerhead and "A-B" Counterweight (68,000 lbs.) In Extended Position

Boom Lgth.	Radius In Feet	Boom Angle Degrees	Free Over Side	Free Over Rear	Outriggers Set		Feet From Boom Point
					Over Front* Or Side	Over Rear	
50' boom	12	84.3		99,970	360,000	360,000	58
	13	83.1		96,140	360,000	360,000	58
	14	82.0		92,720	340,060	340,060	58
	15	80.9		89,530	317,410	317,410	58
	20	75.0		76,000	238,040	238,040	57
	25	69.0		65,740	190,480	190,480	55
	30	62.8		57,620	158,750	158,750	53
	35	56.0		51,070	122,740	126,950	50
	40	48.7		45,610	99,250	102,850	46
	50	29.7		37,150	70,800	73,580	32
60' boom	13	84.3		95,150	360,000	360,000	68
	14	83.3		91,780	339,860	339,860	68
	15	82.4		88,620	317,230	317,230	68
	20	77.6		75,190	237,880	237,880	67
	25	72.6		65,050	190,360	190,360	65
	30	67.6		57,000	158,540	158,650	64
	35	62.3		50,530	122,990	127,190	61
	40	56.7		45,100	99,440	103,030	58
	50	44.1		36,740	70,960	73,740	50
	60	26.9		29,410	54,290	56,540	35
70' boom	14	84.3		90,850	339,650	339,650	78
	15	83.4		87,730	317,040	317,040	78
	20	79.4		74,410	237,730	237,730	77
	25	75.2		64,350	190,240	190,240	76
	30	70.9		56,370	156,800	158,550	74
	35	66.5		49,950	123,090	127,280	72
	40	62.0		44,560	99,490	103,080	70
	50	52.1	21,770	36,300	70,990	73,760	63
	60	40.6	16,670	29,350	54,340	56,590	53
	70	24.7	12,840	23,320	43,330	45,220	37
80' boom	14	85.0		89,810	339,560	339,450	88
	15	84.3		86,730	316,860	316,860	88
	20	80.7		73,500	237,580	237,580	87
	25	77.1		63,530	190,130	190,130	86
	30	73.4		55,600	155,250	158,450	85
	35	69.6		49,240	122,570	127,250	83
	40	65.7		43,880	99,410	102,990	81
	50	57.6	21,310	35,690	70,870	73,640	76
	60	48.5	16,280	29,130	54,230	56,480	68
	70	37.8	12,490	23,110	43,220	45,110	57
80	23.0	9,570	18,680	35,410	37,050	39	
90' boom	15	84.9		85,780	316,670	316,670	98
	20	81.7		72,640	237,430	237,430	97
	25	78.5		62,750	190,020	190,020	96
	30	75.3		54,890	153,640	158,360	95
	35	71.9		48,570	121,510	127,170	94
	40	68.6		43,230	99,280	102,860	92
	50	61.5	20,860	35,100	70,720	73,480	87
	60	54.0	15,860	28,870	54,070	56,320	81
	70	45.5	12,110	22,880	43,060	44,950	72
	80	35.5	9,220	18,460	35,250	36,890	60
90	21.6	6,980	15,130	29,490	30,920	41	

Boom Lgth.	Radius In Feet	Boom Angle Degrees	Free Over Side	Free Over Rear	Outriggers Set		Feet From Boom Point
					Over Front* Or Side	Over Rear	
100' boom	16	84.8		83,230	247,040	247,040	108
	20	82.6		72,970	203,710	237,460	107
	25	79.7		63,120	163,240	190,080	107
	30	76.8		55,090	135,270	158,260	106
	35	73.8		48,800	115,410	127,420	104
	40	70.8		43,470	99,130	103,110	103
	50	64.6	21,140	35,360	70,970	73,740	98
	60	58.1	16,190	29,150	54,360	56,610	93
	70	50.9	12,450	23,160	43,350	45,250	86
	80	43.0	9,570	18,760	35,560	37,200	76
90	33.6	7,410	15,490	29,860	31,300	63	
100	20.4	5,500	12,780	25,320	26,600	42	
110' boom	17	84.8		79,410	234,050	234,050	118
	20	83.2		72,040	201,900	226,950	117
	25	80.6		62,270	161,600	189,990	117
	30	78.0		54,290	134,130	158,170	116
	35	75.3		48,030	114,350	127,300	115
	40	72.6		42,730	98,360	102,930	113
	50	67.1	20,600	34,690	70,770	73,530	109
	60	61.3	15,700	28,790	54,150	56,390	105
	70	55.1	11,960	22,840	43,110	45,000	98
	80	48.4	9,110	18,450	35,320	36,950	90
90	40.9	6,990	15,220	29,650	31,080	80	
100	31.9	5,130	12,530	25,120	26,400	66	
110	19.4	3,570	10,330	21,490	22,650	44	
120' boom	18	84.7		76,060	220,560	220,560	128
	20	83.8		71,180	199,990	216,990	128
	25	81.4		61,480	160,310	189,890	127
	30	79.0		53,520	132,960	158,070	126
	35	76.6		47,320	113,290	127,150	125
	40	74.1	27,460	42,240	97,790	102,950	124
	50	69.1	20,080	34,050	70,540	73,300	120
	60	63.9	15,200	28,190	53,900	56,140	116
	70	58.4	11,490	22,510	42,850	44,740	110
	80	52.6	8,650	18,120	35,050	36,680	103
90	46.2	6,570	14,920	29,400	30,840	95	
100	39.0	4,730	12,250	24,890	26,170	83	
110	30.5	3,200	10,070	21,280	22,440	69	
120	18.5	1,890	8,250	18,310	19,370	46	
130' boom	19	84.7			207,960	207,960	138
	20	84.3			198,080	206,060	138
	25	82.1			158,960	189,800	137
	30	79.8			131,780	157,980	136
	35	77.6			112,430	126,980	135
	40	75.3			96,990	102,750	134
	50	70.7			70,280	73,030	131
	60	66.0			53,620	55,870	127
	70	61.1			42,560	44,450	122
	80	55.9			34,740	36,370	116
90	50.3			29,100	30,540	108	
100	44.3			24,590	25,870	99	
110	37.4			20,980	22,140	87	
120	29.2			18,040	19,090	71	
130	17.8			15,570	16,540	47	

*With Optional Front Bumper Outrigger

(continued)

LIFT CRANE RATINGS IN POUNDS (cont.)

With 77SL Tubular Chord Lattice Boom With Hammerhead and "A-B" Counterweight (68,000 lbs.) In Extended Position

Boom Lgth.	Radius In Feet	Boom Angle Degrees	Free Over Side	Free Over Rear	Outriggers Set		Feet From Boom Point
					Over Front* Or Side	Over Rear	
140' boom	20	84.7			190,730	190,730	148
	25	82.6			157,570	185,980	147
	30	80.6			130,560	157,880	146
	35	78.5			111,300	126,780	145
	40	76.4			96,190	102,520	144
	50	72.2			69,730	72,760	141
	60	67.8			53,340	55,580	138
	70	63.3			42,260	44,150	133
	80	58.6			34,430	36,060	128
	90	53.7			28,810	30,240	121
	100	48.4			24,290	25,570	113
	110	42.6			20,680	21,830	103
	120	36.0			17,740	18,790	90
	130	28.1			15,290	16,250	74
140	17.1			13,190	14,090	49	
150' boom	26	82.7			145,930	145,930	157
	30	81.2			130,220	143,940	156
	35	79.3			110,790	126,730	156
	40	77.3			95,540	102,480	155
	50	73.4			69,400	72,720	152
	60	69.4			53,320	55,560	149
	70	65.2			42,240	44,130	144
	80	60.9			34,420	36,050	139
	90	56.4			28,820	30,260	133
	100	51.7			24,310	25,580	126
	110	46.6			20,710	21,860	117
	120	41.0			17,770	18,820	106
	130	34.7			15,320	16,290	93
	140	27.1			13,250	14,140	76
150	16.4			11,460	12,300	50	
160' boom	27	82.8			134,540	134,540	167
	30	81.8			129,320	134,540	167
	35	79.9			109,840	126,560	166
	40	78.1			94,790	102,290	165
	50	74.4			68,870	72,460	162
	60	70.7			53,050	55,290	159
	70	66.9			41,950	43,840	155
	80	62.9			34,100	35,730	151
	90	58.8			28,530	29,960	145
	100	54.5			24,010	25,280	138
	110	49.9			20,400	21,550	130
	120	45.0			17,460	18,510	121
	130	39.6			15,010	15,980	110
	140	33.6			12,950	13,840	96
150	26.2			11,170	12,000	78	
160	15.9			9,620	10,400	51	
170' boom	28	82.9			123,230	123,230	177
	30	82.2			123,230	123,230	177
	35	80.5			109,010	123,230	176
	40	78.8			93,980	102,080	175
	50	75.4			68,180	72,190	173
	60	71.9			52,660	55,000	170
	70	68.3			41,650	43,530	166
	80	64.6			33,790	35,420	162
	90	60.8			28,220	29,650	157
	100	56.9			23,700	24,980	150
	110	52.7			20,090	21,240	143
	120	48.3			17,140	18,190	135
	130	43.6			14,690	15,660	125
	140	38.4			12,620	13,510	113
150	32.5			10,850	11,680	99	
160	25.4			9,310	10,090	81	
170	15.4			7,970	8,700	53	
180' boom	29	83.0			112,940	112,940	187
	30	82.7			112,940	112,940	187
	35	81.1			107,950	112,940	186
	40	79.5			93,160	101,850	185
	50	76.2			67,620	71,900	183
	60	72.9			52,160	54,710	180
	70	69.6			41,330	43,210	177
	80	66.1			33,460	35,080	173
	90	62.6			27,890	29,320	168
	100	58.9			23,360	24,630	162
	110	55.1			19,750	20,900	156
	120	51.1			16,800	17,850	148
	130	46.9			14,350	15,320	139
	140	42.3			12,270	13,170	129
150	37.3			10,510	11,340	117	
160	31.6			8,960	9,740	102	
170	24.7			7,620	8,350	83	
180	14.9			6,430	7,120	54	

Boom Lgth.	Radius In Feet	Boom Angle Degrees	Free Over Side	Free Over Rear	Outriggers Set		Feet From Boom Point
					Over Front* Or Side	Over Rear	
190' boom	31	82.8			104,390	104,390	197
	35	81.5			104,390	104,390	196
	40	80.0			92,380	101,620	195
	50	76.9			66,930	71,620	193
	60	73.8			51,650	54,410	191
	70	70.7			41,010	42,890	187
	80	67.4			33,120	34,740	184
	90	64.1			27,570	28,990	179
	100	60.7			23,020	24,300	174
	110	57.2			19,400	20,550	168
	120	53.5			16,460	17,510	161
	130	49.6			14,000	14,960	153
	140	45.5			11,930	12,820	144
	150	41.1			10,160	10,990	133
160	36.2			8,620	9,390	120	
170	30.7			7,280	8,000	105	
180	24.0			6,100	6,780	85	
190	14.5			5,030	5,680	55	
200' boom	32	82.8			79,450	79,450	207
	35	82.0			79,450	79,450	206
	40	80.5			79,450	79,450	205
	50	77.6			66,480	71,450	204
	60	74.7			51,300	54,260	201
	70	71.7			40,700	42,740	198
	80	68.6			32,980	34,600	194
	90	65.5			27,450	28,880	190
	100	62.3			22,910	24,180	185
	110	59.0			19,290	20,440	180
	120	55.6			16,340	17,390	173
	130	52.1			13,900	14,860	166
	140	48.3			11,820	12,710	157
	150	44.3			10,050	10,880	148
160	40.0			8,520	9,290	136	
170	35.3			7,190	7,910	123	
180	29.9			5,990	6,680	107	
190	23.4			4,950	5,590	87	
200	14.1			4,010	4,620	56	
210' boom	33	82.9			74,820	74,820	217
	35	82.4			74,800	74,800	216
	40	81.0			74,800	74,800	216
	50	78.2			65,950	71,180	214
	60	75.4			50,810	53,980	211
	70	72.6			40,230	42,440	209
	80	69.7			32,660	34,280	205
	90	66.8			27,140	28,560	201
	100	63.8			22,590	23,860	196
	110	60.7			18,970	20,120	191
	120	57.5			16,010	17,060	185
	130	54.2			13,560	14,520	178
	140	50.7			11,490	12,380	171
	150	47.1			9,710	10,540	162
160	43.2			8,170	8,950	152	
170	39.0			6,830	7,560	140	
180	34.4			5,650	6,340	126	
190	29.1			4,600	5,250	110	
200	22.8			3,670	4,280	89	
210	13.8			2,820	3,410	57	
220' boom	34	83.0			69,920	69,920	227
	35	82.7			69,920	69,920	226
	40	81.4			69,860	69,860	226
	50	78.8			65,270	68,940	224
	60	76.1			50,310	53,690	222
	70	73.4			39,840	42,120	219
	80	70.6			32,200	33,950	216
	90	67.9			26,820	28,250	212
	100	65.0			22,270	23,540	208
	110	62.1			18,640	19,790	203
	120	59.1			15,680	16,730	197
	130	56.0			13,220	14,180	191
	140	52.8			11,140	12,030	183
	150	49.4			9,370	10,200	175
160	45.9			7,840	8,610	166	
170	42.1			6,490	7,220	156	
180	38.1			5,310	5,990	143	
190	33.6			4,250	4,900	129	
200	28.4			3,320	3,930	112	
210	22.2			2,480	3,060	91	
220	13.4			1,720	2,270	59	

LIFT CRANE RATINGS IN POUNDS (cont.)

With 77SL Tubular Chord Lattice Boom With Hammerhead and "A-B" Counterweight (68,000 lbs.) In Extended Position

Boom Lgth.	Radius In Feet	Boom Angle Degrees	Free Over Side	Free Over Rear	Outriggers Set		Feet From Boom Point
					Over Front* Or Side	Over Rear	
230' boom	36	82.8			64,050	64,050	236
	40	81.8			64,040	64,040	236
	50	79.2			63,190	63,190	234
	60	76.7			49,820	53,380	232
	70	74.1			39,360	41,800	229
	80	71.5			32,130	34,010	226
	90	68.9			26,440	27,910	223
	100	66.2			21,930	23,200	219
	110	63.4			18,290	19,440	214
	120	60.6			15,330	16,380	208
	130	57.7			12,870	13,830	202
	140	54.7			10,780	11,670	196
	150	51.6			9,010	9,840	188
	160	48.3			7,470	8,240	180
	170	44.8			6,120	6,850	170
	180	41.2			4,940	5,620	159
	190	37.2			3,890	4,530	147
200	32.8			2,950	3,560	132	
210	27.8			2,100	2,680	115	
220	21.7			1,330	1,890	93	

Boom Lgth.	Radius In Feet	Boom Angle Degrees	Free Over Side	Free Over Rear	Outriggers Set		Feet From Boom Point
					Over Front* Or Side	Over Rear	
240' boom	37	82.8			59,860	59,860	246
	40	82.1			59,710	59,710	246
	50	79.7			58,700	58,700	244
	60	77.3			49,210	53,090	242
	70	74.8			38,790	41,470	240
	80	72.3			31,750	33,700	237
	90	69.8			26,000	27,580	233
	100	67.2			21,540	22,860	229
	110	64.6			17,950	19,090	225
	120	61.9			14,980	16,020	220
	130	59.2			12,510	13,470	214
	140	56.4			10,430	11,310	208
	150	53.4			8,640	9,470	201
	160	50.4			7,110	7,880	193
	170	47.2			5,750	6,480	184
	180	43.8			4,570	5,250	174
	190	40.3			3,500	4,160	163
200	36.4			2,550	3,190	150	
210	32.1			1,690	2,310	135	
220	27.2				1,530	117	

8470.19

*With Optional Front Bumper Outrigger

LIFT CRANE RATINGS IN POUNDS

With 77SL Tubular Chord Lattice Boom With Tapered Tip and "A-B" Counterweight (68,000 lbs.) In Extended Position

Boom Lgth.	Radius In Feet	Boom Angle Degrees	Free Over Side	Free Over Rear	Outriggers Set		Feet From Boom Point
					Over Front* Or Side	Over Rear	
80' boom	18	80.3		82,610	176,410	176,410	86
	20	78.8		77,700	176,410	176,410	86
	25	75.1		67,650	160,780	160,780	85
	30	71.4		59,630	133,880	133,880	83
	35	67.6		53,300	114,800	114,800	81
	40	63.7		47,980	100,400	100,400	79
	50	55.3		39,860	73,860	76,630	73
	60	46.1		32,400	57,390	59,640	65
	70	35.0		26,500	46,520	48,420	53
80	19.3		22,180	38,850	40,480	34	
90' boom	19	80.7		79,170	176,410	176,410	96
	20	80.1		76,800	176,410	176,410	96
	25	76.8		66,810	160,680	160,680	95
	30	73.5		58,830	133,780	133,780	94
	35	70.2		52,560	114,720	114,720	92
	40	66.8		47,270	100,320	100,320	90
	50	59.6		39,210	73,690	76,450	85
	60	51.9		32,120	57,210	59,460	78
	70	43.3		26,220	46,320	48,220	69
80	33.0		21,890	38,620	40,260	56	
90	18.2		18,600	32,910	34,350	35	
100' boom	21	80.5		73,710	176,410	176,410	106
	25	78.2		66,030	160,590	160,590	105
	30	75.2		58,090	133,690	133,690	104
	35	72.2		51,860	114,640	114,640	102
	40	69.2		46,590	100,240	100,240	101
	50	62.9		38,600	73,490	76,250	96
	60	56.3		31,830	57,010	59,260	90
	70	49.1	15,790	25,920	46,100	47,990	83
	80	41.0	13,000	21,590	38,390	40,020	73
90	31.2	10,890	18,380	32,750	34,190	59	
100	17.3	9,090	15,760	28,300	29,590	37	
110' boom	22	80.9		70,660	176,410	176,410	116
	25	79.3		65,130	160,490	160,490	115
	30	76.6		57,240	133,590	133,590	114
	35	73.9		51,060	114,560	114,560	113
	40	71.2		45,830	100,170	100,170	111
	50	65.6		37,880	73,220	75,980	107

Boom Lgth.	Radius In Feet	Boom Angle Degrees	Free Over Side	Free Over Rear	Outriggers Set		Feet From Boom Point
					Over Front* Or Side	Over Rear	
110' boom (cont.)	60	59.7		31,470	56,730	58,980	102
	70	53.4	15,260	25,560	45,810	47,700	96
	80	46.7	12,480	21,230	38,090	39,730	87
	90	39.0	10,420	18,050	32,480	33,910	76
	100	29.8	8,630	15,430	28,020	29,300	62
	110	16.4		13,300	24,460	25,620	38
120' boom	24	80.6		65,900	166,900	166,900	126
	25	80.2		64,310	160,400	160,400	125
	30	77.7		56,450	133,500	133,500	124
	35	75.3		50,320	114,490	114,490	123
	40	72.8		45,100	100,090	100,090	122
	50	67.7		37,210	72,940	75,700	118
	60	62.4	18,380	31,110	56,450	58,700	114
	70	56.9	14,750	25,190	45,510	47,400	108
	80	51.0	11,980	20,870	37,790	39,420	101
90	44.6	9,950	17,710	32,190	33,620	91	
100	37.3	8,170	15,100	27,740	29,020	80	
110	28.5	6,690	12,970	24,170	25,330	64	
120	15.7	5,450	11,210	21,280	22,330	40	
130' boom	25	80.9			160,300	160,300	136
	30	78.7			133,400	113,400	135
	35	76.4			114,410	114,410	134
	40	74.1			99,540	100,010	132
	50	69.5			72,990	75,750	129
	60	64.7			56,530	58,770	125
	70	59.8			45,580	47,480	120
	80	54.5			37,860	39,490	113
	90	48.9			32,290	33,730	105
100	42.7			27,840	29,120	95	
110	35.8			24,280	25,440	83	
120	27.3			21,390	22,440	67	
130	15.1			18,980	19,950	41	
140' boom	27	80.8			148,250	148,250	145
	30	79.5			133,310	133,310	145
	35	77.4			114,330	114,330	144
	40	75.3			98,690	99,930	143
	50	71.0			72,730	75,490	140
	60	66.6			56,250	58,490	136
70	62.1			45,290	47,180	131	

(continued)

*With Optional Front Bumper Outrigger

LIFT CRANE RATINGS IN POUNDS (cont.)

With 77SL Tubular Chord Lattice Boom With Tapered Tip and "A-B" Counterweight (68,000 lbs.) In Extended Position

Boom Lgth.	Radius In Feet	Boom Angle Degrees	Free Over Side	Free Over Rear	Outriggers Set		Feet From Boom Point
					Over Front* Or Side	Over Rear	
140' boom (cont.)	80	57.4			37,550	39,180	125
	90	52.4			32,000	33,430	118
	100	47.0			27,530	28,810	110
	110	41.1			23,980	25,130	99
	120	34.4			21,070	22,130	86
	130	26.3			18,670	19,640	69
	140	14.6			16,630	17,530	42
150' boom	28	81.0			142,410	142,820	155
	30	80.2			132,690	133,210	155
	35	78.3			113,800	114,260	154
	40	76.3			97,850	99,860	153
	50	72.3			72,150	75,200	150
	60	68.3			55,950	58,190	147
	70	64.1			44,980	46,870	142
	80	59.8			37,230	38,860	137
	90	55.3			31,690	33,120	130
	100	50.5			27,230	28,500	123
	110	45.3			23,660	24,820	114
	120	39.6			20,760	21,810	103
	130	33.2			18,350	19,320	89
	140	25.4			16,320	17,210	72
	150	14.1			14,580	15,410	44
160' boom	30	80.8			131,700	133,120	165
	35	79.0			112,620	114,180	164
	40	77.2			97,240	100,060	163
	50	73.5			71,410	74,890	161
	60	69.7			55,640	57,870	157
	70	65.8			44,650	46,530	153
	80	61.8			36,880	38,500	148
	90	57.7			31,350	32,780	142
	100	53.4			26,880	28,150	136
	110	48.8			23,320	24,470	128
	120	43.8			20,420	21,470	118
	130	38.3			18,000	18,970	106
	140	32.1			15,960	16,850	92
150	24.6			14,230	15,060	74	
160	13.6			12,720	13,500	45	
170' boom	32	80.7			122,520	124,920	175
	35	79.7			111,660	114,110	174
	40	77.9			96,370	100,010	173
	50	74.5			70,810	74,570	171
	60	70.9			55,310	57,550	168
	70	67.3			44,300	46,180	164
	80	63.6			36,530	38,150	160
	90	59.8			31,020	32,450	154
	100	55.8			26,540	27,810	148
	110	51.6			22,970	24,120	141
	120	47.2			20,060	21,110	132
	130	42.4			17,650	18,610	122
	140	37.1			15,610	16,500	110
	150	31.1			13,870	14,700	95
160	23.8			12,360	13,130	76	
170	13.2			11,050	11,780	46	
180' boom	33	80.9			101,880	101,880	185
	35	80.2			101,880	101,880	185
	40	78.6			95,840	99,950	184
	50	75.4			70,380	74,430	181
	60	72.0			55,090	57,440	178
	70	68.7			44,190	46,070	175
	80	65.2			36,420	38,050	171
	90	61.6			30,940	32,370	166
	100	58.0			26,460	27,740	160
	110	54.1			22,890	24,050	153
	120	50.1			19,980	21,040	145
	130	45.8			17,570	18,540	136
	140	41.2			15,540	16,430	126
	150	36.1			13,790	14,620	113
	160	30.2			12,290	13,070	98
170	23.2			10,980	11,710	78	
180	12.8			9,840	10,520	47	
190' boom	35	80.8			94,210	94,210	195
	40	79.2			94,210	94,210	194
	50	76.1			69,810	74,150	192
	60	73.0			54,570	57,130	189
	70	69.8			43,880	45,760	186
	80	66.6			36,090	37,710	182
	90	63.3			30,610	32,040	177
	100	59.8			26,130	27,410	171
	110	56.3			22,560	23,710	165

Boom Lgth.	Radius In Feet	Boom Angle Degrees	Free Over Side	Free Over Rear	Outriggers Set		Feet From Boom Point
					Over Front* Or Side	Over Rear	
190' boom (cont.)	120	52.6			19,650	20,700	158
	130	48.7			17,240	18,200	150
	140	44.5			15,190	16,080	140
	150	40.0			13,450	14,270	129
	160	35.1			11,940	12,720	116
	170	29.4			10,630	11,360	101
	180	22.5			9,480	10,160	80
190	12.5			8,450	9,100	48	
200' boom	36	80.9			87,680	87,680	205
	40	79.8			87,680	87,680	204
	50	76.9			69,090	73,840	202
	60	73.9			54,040	56,820	199
	70	70.9			43,550	45,430	196
	80	67.8			35,750	37,370	192
	90	64.7			30,290	31,710	188
	100	61.5			25,800	27,070	183
	110	58.2			22,220	23,370	177
	120	54.7			19,310	20,360	171
	130	51.1			16,890	17,850	163
	140	47.4			14,850	15,740	154
	150	43.3			13,100	13,930	144
160	39.0			11,590	12,370	133	
170	34.2			10,270	11,000	120	
180	28.7			9,110	9,800	103	
190	21.9			8,090	8,740	82	
200	12.2			7,180	7,800	49	
210' boom	38	80.8			81,680	81,680	215
	40	80.3			81,680	81,680	214
	50	77.5			68,490	73,520	212
	60	74.7			53,510	56,500	210
	70	71.8			43,120	45,090	207
	80	68.9			35,390	37,010	203
	90	66.0			29,940	31,370	199
	100	62.9			25,440	26,710	194
	110	59.8			21,860	23,010	189
	120	56.6			18,950	20,000	183
	130	53.3			16,520	17,480	176
	140	49.8			14,470	15,360	168
	150	46.1			12,730	13,550	159
	160	42.2			11,220	11,990	148
170	38.0			9,900	10,620	136	
180	33.3			8,740	9,420	123	
190	27.9			7,710	8,360	106	
200	21.4			6,800	7,410	84	
210	11.9			5,980	6,570	50	
220' boom	39	81.0			75,830	75,830	225
	40	80.7			75,630	75,630	224
	50	78.1			67,900	73,210	222
	60	75.4			52,960	56,170	220
	70	72.7			42,600	44,740	217
	80	69.9			35,030	36,650	214
	90	67.1			29,590	31,020	210
	100	64.3			25,080	26,350	205
	110	61.3			21,500	22,650	200
	120	58.3			18,580	19,620	194
	130	55.2			16,160	17,120	188
	140	52.0			14,110	15,000	181
	150	48.6			12,350	13,180	172
	160	45.0			10,840	11,610	163
170	41.2			9,520	10,240	152	
180	37.1			8,350	9,040	140	
190	32.5			7,330	7,970	126	
200	27.3			6,410	7,020	108	
210	20.9			5,590	6,170	86	
220	11.6			4,870	5,420	51	
230' boom	41	80.9			58,590	58,590	234
	50	78.6			57,800	57,800	233
	60	76.0			52,660	55,970	230
	70	73.4			42,320	44,540	228
	80	70.8			34,840	36,460	224
	90	68.2			29,420	30,850	221
	100	65.5			24,920	26,190	216
	110	62.7			21,340	22,480	212
	120	59.9			18,420	19,460	206
	130	56.9			15,990	16,950	200
	140	53.9			13,950	14,840	193
150	50.8			12,200	13,020	185	
160	47.5			10,690	11,460	177	

LIFT CRANE RATINGS IN POUNDS (cont.)

With 77SL Tubular Chord Lattice Boom With Tapered Tip and "A-B" Counterweight (68,000 lbs.) In Extended Position

Boom Lgth.	Radius In Feet	Boom Angle Degrees	Free Over Side	Free Over Rear	Outriggers Set		Feet From Boom Point
					Over Front* Or Side	Over Rear	
230' boom (cont.)	170	44.0			9,360	10,090	167
	180	40.3			8,210	8,890	156
	190	36.2			7,180	7,820	143
	200	31.8			6,260	6,870	128
	210	26.7			5,440	6,020	111
	220	20.4			4,700	5,250	88
	230	11.4			4,050	4,580	53
240' boom	43	80.8			55,160	55,160	244
	50	79.1			54,550	54,550	243
	60	76.6			52,140	53,180	241
	70	74.2			41,820	44,210	238
	80	71.7			34,360	36,120	235
	90	69.1			29,090	30,520	231
	100	66.6			24,580	25,850	227
	110	63.9			20,990	22,140	223
	120	61.2			18,070	19,120	218
	130	58.5			15,640	16,600	212
	140	55.6			13,590	14,480	205
	150	52.7			11,840	12,670	198
	160	49.6			10,320	11,100	190
	170	46.4			9,000	9,730	181
	180	43.0			7,840	8,520	171
	190	39.4			6,810	7,450	160
	200	35.4			5,880	6,500	146
210	31.1			5,060	5,640	131	
220	26.1			4,320	4,870	113	
230	20.0			3,660	4,190	89	
240	11.1			3,050	3,560	53	
250' boom	44	80.9			51,810	51,810	254
	50	79.5			51,180	51,180	253
	60	77.2			49,920	49,920	251
	70	74.8			41,320	43,880	248
	80	72.4			33,880	35,770	246
	90	70.0			28,700	30,180	242
	100	67.5			24,240	25,510	238
	110	65.0			20,650	21,790	234
	120	62.5			17,720	18,770	229
	130	59.9			15,290	16,250	223
	140	57.2			13,230	14,120	217
	150	54.4			11,480	12,300	211
	160	51.5			9,970	10,740	203
	170	48.6			8,640	9,360	195
	180	45.4			7,470	8,160	185
	190	42.1			6,440	7,090	175
	200	38.6			5,520	6,130	163
210	34.7			4,700	5,280	150	
220	30.5			3,950	4,510	134	
230	25.6			3,280	3,810	115	
240	19.6			2,670	3,170	91	
250	10.9			2,130	2,610	54	
260' boom	46	80.8			48,860	48,860	264
	50	79.9			48,450	48,450	263
	60	77.7			47,110	47,110	261
	70	75.4			41,450	44,100	259
	80	73.1			34,010	35,980	256
	90	70.8			28,860	30,400	253
	100	68.4			24,450	25,720	249
	110	66.1			20,850	22,000	245
	120	63.6			17,920	18,960	240
	130	61.1			15,480	16,440	235

Boom Lgth.	Radius In Feet	Boom Angle Degrees	Free Over Side	Free Over Rear	Outriggers Set		Feet From Boom Point
					Over Front* Or Side	Over Rear	
260' boom (cont.)	140	58.6			13,430	14,310	229
	150	56.0			11,670	12,490	223
	160	53.3			10,150	10,920	216
	170	50.5			8,820	9,550	208
	180	47.6			7,660	8,340	199
	190	44.5			6,620	7,260	189
	200	41.2			5,690	6,310	179
	210	37.8			4,870	5,450	167
	220	34.0			4,120	4,670	153
	230	29.9			3,450	3,970	137
	240	25.1			2,840	3,350	117
250	19.2			2,280	2,770	93	
260	10.7			1,790	2,250	55	
270' boom	47	80.9			45,930	45,930	274
	50	80.3			45,610	45,610	273
	60	78.1			44,130	44,130	271
	70	76.0			40,950	42,750	269
	80	73.8			33,530	35,630	266
	90	71.5			28,450	30,050	263
	100	69.3			24,040	25,360	260
	110	67.0			20,490	21,630	256
	120	64.7			17,550	18,600	251
	130	62.3			15,120	16,070	246
	140	59.9			13,060	13,940	241
	150	57.4			11,300	12,120	235
	160	54.8			9,770	10,540	228
	170	52.2			8,450	9,170	221
	180	49.5			7,280	7,960	212
	190	46.6			6,240	6,890	203
	200	43.6			5,320	5,930	193
210	40.4			4,490	5,070	182	
220	37.1			3,740	4,290	170	
230	33.4			3,060	3,590	156	
240	29.3			2,450	2,950	139	
250	24.6			1,880	2,370	120	
260	18.9			1,380	1,850	95	
270	10.5				1,380	56	
280' boom	49	80.9			36,730	36,730	284
	50	80.6			36,510	36,510	284
	60	78.6			35,370	35,370	282
	70	76.5			33,990	33,990	279
	80	74.4			32,600	32,600	277
	90	72.2			28,120	29,830	274
	100	70.1			23,780	25,140	270
	110	67.9			20,230	21,420	267
	120	65.6			17,340	18,380	262
	130	63.4			14,900	15,860	258
	140	61.1			12,850	13,730	252
	150	58.7			11,090	11,910	246
	160	56.3			9,570	10,340	240
	170	53.8			8,240	8,960	233
	180	51.2			7,070	7,750	225
	190	48.5			6,030	6,680	217
	200	45.7			5,110	5,720	208
210	42.8			4,280	4,860	197	
220	39.7			3,530	4,080	186	
230	36.4			2,850	3,380	173	
240	32.8			2,230	2,740	159	
250	28.7			1,660	2,160	142	
260	24.1			1,150	1,630	122	
270	18.5				1,150	96	

8470.24

*With Optional Front Bumper Outrigger

LIFT CRANE RATINGS IN POUNDS

With 77SL Tubular Chord Lattice Boom With Hammerhead and "A-B" Counterweight (68,000 lbs.) In Extended Position Plus 18,000 lbs. Front Bumper Counterweight

Boom Length In Feet	Radius In Feet	Boom Angle Degrees	Outriggers Set		Ft. From Boom Pt. to Ground
			Over Front* Or Side	Over Rear	
50' boom	12	84.3	360,000	360,000	58
	13	83.1	343,280	360,000	58
	14	82.0	324,480	340,150	58
	15	80.9	307,710	317,410	58
	20	75.0	238,040	238,040	57
	25	69.0	190,480	190,480	55
	30	62.8	158,750	158,750	53
	35	56.0	130,540	136,120	50
	40	48.7	105,660	119,100	46
	50	29.7	75,520	86,980	32
60' boom	13	84.3	343,080	360,000	68
	14	83.3	324,300	339,970	68
	15	82.4	307,530	317,230	68
	20	77.6	237,880	237,880	67
	25	72.6	190,360	190,360	65
	30	67.6	158,650	158,650	64
	35	62.3	130,790	136,040	61
	40	56.7	105,840	119,010	58
	50	44.1	75,680	87,140	50
	60	26.9	58,020	67,160	35
70' boom	14	84.3	324,110	339,780	78
	15	83.4	306,100	317,040	78
	20	79.4	237,730	237,730	77
	25	75.2	190,240	190,240	76
	30	70.9	158,550	158,550	74
	35	66.5	130,890	135,950	72
	40	62.0	105,890	118,920	70
	50	52.1	75,710	87,160	63
	60	40.6	58,070	67,210	53
	70	24.7	46,420	54,020	37
80' boom	14	85.0	322,570	339,590	88
	15	84.3	305,920	316,860	88
	20	80.7	237,580	237,580	87
	25	77.1	190,130	190,130	86
	30	73.4	158,450	158,450	85
	35	69.6	129,810	135,870	83
	40	65.7	105,810	118,840	81
	50	57.6	75,590	87,040	76
	60	48.5	57,960	67,100	68
	70	37.8	46,310	53,910	57
80	23.0	38,040	44,550	39	
90' boom	15	84.9	304,500	316,670	98
	20	81.7	237,430	237,430	97
	25	78.5	190,020	190,020	96
	30	75.3	158,360	158,360	95
	35	71.9	128,690	135,800	94
	40	68.6	105,690	118,760	92
	50	61.5	75,430	86,880	87
	60	54.0	57,800	66,940	81
	70	45.5	46,150	53,740	72
	80	35.5	37,890	44,390	60
90	21.6	31,780	37,470	41	
100' boom	16	84.8	247,040	247,040	108
	20	82.6	203,590	237,460	107
	25	79.7	163,320	190,080	107
	30	76.8	135,470	158,260	106
	35	73.8	115,270	135,720	104
	40	70.8	100,200	118,680	103
	50	64.6	75,690	87,140	98
	60	58.1	58,100	67,230	93
	70	50.9	46,450	54,040	86
	80	43.0	38,200	44,700	76
90	33.6	32,160	37,840	63	
100	20.4	27,350	32,400	42	
110' boom	17	84.8	234,050	234,050	118
	20	83.2	202,000	226,950	117
	25	80.6	161,690	189,990	117
	30	78.0	134,060	158,170	116
	35	75.3	114,460	135,640	115
	40	72.6	99,230	118,600	113
	50	67.1	75,480	86,930	109
	60	61.3	57,880	67,010	105

Boom Length In Feet	Radius In Feet	Boom Angle Degrees	Outriggers Set		Ft. From Boom Pt. to Ground
			Over Front* Or Side	Over Rear	
110' boom (cont.)	70	55.1	46,200	53,800	98
	80	48.4	37,960	44,460	90
	90	40.9	31,940	37,630	80
	100	31.9	27,160	32,200	66
	110	19.4	23,320	27,860	44
	120' boom	18	84.7	220,560	220,560
20		83.8	199,810	216,990	128
25		81.4	160,390	189,890	127
30		79.0	132,890	158,070	126
35		76.6	113,370	135,560	125
40		74.1	98,240	118,520	124
50		69.1	75,260	86,700	120
60		63.9	57,640	66,760	116
70		58.4	45,950	53,540	110
80		52.6	37,690	44,190	103
90		46.2	31,700	37,380	95
100		39.0	26,920	31,970	83
110	30.5	23,110	27,650	69	
120	18.5	19,970	24,100	46	
130' boom	19	84.7	207,960	207,960	138
	20	84.3	198,320	206,060	138
	25	82.1	159,050	189,800	137
	30	79.8	131,700	157,980	136
	35	77.6	112,280	135,490	135
	40	75.3	97,660	118,680	134
	50	70.7	74,840	86,430	131
	60	66.0	57,360	66,490	127
	70	61.1	45,650	53,240	122
	80	55.9	37,380	43,870	116
	90	50.3	31,400	37,080	108
	100	44.3	26,630	31,670	99
	110	37.4	22,810	27,350	87
120	29.2	19,700	23,820	71	
130	17.8	17,090	20,870	47	
140' boom	20	84.7	190,730	190,730	148
	25	82.6	157,670	185,980	147
	30	80.6	130,750	157,880	146
	35	78.5	111,420	135,410	145
	40	76.4	96,650	118,620	144
	50	72.2	74,130	86,170	141
	60	67.8	57,080	66,200	138
	70	63.3	45,350	52,940	133
	80	58.6	37,070	43,560	128
	90	53.7	31,110	36,790	121
	100	48.4	26,330	31,370	113
	110	42.6	22,510	27,050	103
	120	36.0	19,400	23,520	90
	130	28.1	16,810	20,580	74
140	17.1	14,590	18,080	49	
150' boom	26	82.7	145,930	145,930	157
	30	81.2	130,140	143,670	156
	35	79.3	110,860	135,340	156
	40	77.3	96,410	118,560	155
	50	73.4	73,780	86,120	152
	60	69.4	57,060	66,180	149
	70	65.2	45,340	52,920	144
	80	60.9	37,060	43,550	139
	90	56.4	31,120	36,800	133
	100	51.7	26,340	31,390	126
	110	46.6	22,540	27,080	117
	120	41.0	19,430	23,550	106
	130	34.7	16,840	20,620	93
	140	27.1	14,650	18,130	76
150	16.5	12,760	16,000	50	
160' boom	27	82.8	134,540	134,540	167
	30	81.8	129,250	134,540	167
	35	79.9	109,840	133,260	166
	40	78.1	95,430	118,510	165
	50	74.4	73,080	85,860	162
	60	70.7	56,670	65,910	159
	70	66.9	45,040	52,630	155
	80	62.9	36,740	43,230	151

*With Optional Front Bumper Outrigger

LIFT CRANE RATINGS IN POUNDS (cont.)

With 77SL Tubular Chord Lattice Boom With Hammerhead and "A-B" Counterweight (68,000 lbs.) In Extended Position Plus 18,000 lbs. Front Bumper Counterweight

Boom Length In Feet	Radius In Feet	Boom Angle Degrees	Outriggers Set		Ft. From Boom Pt. to Ground
			Over Front* Or Side	Over Rear	
160' boom	90	58.8	30,830	36,500	145
	100	54.5	26,040	31,080	138
	110	49.9	22,230	26,760	130
	120	45.0	19,120	23,240	121
	130	39.6	16,530	20,310	110
	140	33.6	14,350	17,830	96
	150	26.2	12,470	15,700	78
160	15.9	10,830	13,850	51	
170' boom	28	82.9	123,230	123,230	177
	30	82.2	123,230	123,230	177
	35	80.5	109,010	123,230	176
	40	78.8	94,650	118,450	175
	50	75.4	72,510	85,590	173
	60	71.9	56,160	65,620	170
	70	68.3	44,740	52,330	166
	80	64.6	36,430	42,920	162
	90	60.8	30,520	36,190	157
	100	56.9	25,740	30,780	150
	110	52.7	21,920	26,450	143
	120	48.3	18,800	22,920	135
	130	43.6	16,210	19,990	125
	140	38.4	14,020	17,510	113
	150	32.5	12,150	15,380	99
	160	25.4	10,520	13,540	81
	170	15.4	9,100	11,930	53
180' boom	29	83.0	112,940	112,940	187
	30	82.7	112,940	112,940	187
	35	81.1	107,960	112,940	186
	40	79.5	93,760	112,940	185
	50	76.2	71,800	85,310	183
	60	72.9	55,650	65,330	180
	70	69.6	44,420	52,010	177
	80	66.1	36,090	42,580	173
	90	62.6	30,190	35,870	168
	100	58.9	25,390	30,430	162
	110	55.1	21,580	26,110	156
	120	51.1	18,460	22,580	148
	130	46.9	15,870	19,650	139
	140	42.3	13,670	17,160	129
150	37.3	11,810	15,040	117	
160	31.6	10,180	13,190	102	
170	24.7	8,760	11,590	83	
180	14.9	7,500	10,160	54	
190' boom	31	82.8	104,390	104,390	197
	35	81.5	104,390	104,390	196
	40	80.0	92,800	104,390	195
	50	76.9	71,210	85,020	193
	60	73.8	55,120	65,030	191
	70	70.7	43,920	51,680	187
	80	67.4	35,750	42,240	184
	90	64.1	29,860	35,540	179
	100	60.7	25,060	30,100	174
	110	57.2	21,230	25,760	168
	120	53.5	18,120	22,240	161
	130	49.6	15,520	19,290	153
	140	45.5	13,330	16,810	144
	150	41.1	11,460	14,690	133
160	36.2	9,830	12,850	120	
170	30.7	8,410	11,240	105	
180	24.0	7,160	9,820	85	
190	14.5	6,040	8,550	55	
200' boom	32	82.8	79,450	79,450	207
	35	82.0	79,450	79,450	206
	40	80.5	79,450	79,450	205
	50	77.6	70,760	79,270	204
	60	74.7	54,750	64,880	201
	70	71.7	43,690	51,540	198
	80	68.6	35,610	42,100	194
	90	65.5	29,750	35,420	190
	100	62.3	24,950	29,990	185
	110	59.0	21,120	25,650	180
	120	55.6	18,000	22,120	173

Boom Length In Feet	Radius In Feet	Boom Angle Degrees	Outriggers Set		Ft. From Boom Pt. to Ground
			Over Front* Or Side	Over Rear	
200' boom (cont.)	130	52.1	15,420	19,190	166
	140	48.3	13,220	16,710	157
	150	44.3	11,350	14,580	148
	160	40.0	9,730	12,750	136
	170	35.3	8,320	11,150	123
	180	29.9	7,060	9,720	107
	190	23.4	5,950	8,460	87
200	14.1	4,960	7,340	56	
210' boom	33	82.9	74,820	74,820	217
	35	82.4	74,800	74,800	216
	40	81.0	74,800	74,800	216
	50	78.2	70,050	73,970	214
	60	75.4	54,250	64,600	211
	70	72.6	43,210	51,230	209
	80	69.7	35,220	41,780	205
	90	66.8	29,440	35,110	201
	100	63.8	24,630	29,660	196
	110	60.7	20,800	25,330	191
	120	57.5	17,670	21,790	185
	130	54.2	15,070	18,850	178
	140	50.7	12,890	16,370	171
	150	47.1	11,010	14,240	162
160	43.2	9,390	12,400	152	
170	39.0	7,970	10,790	140	
180	34.4	6,720	9,380	126	
190	29.1	5,610	8,120	110	
200	22.8	4,620	7,000	89	
210	13.8	3,730	5,990	57	
220' boom	34	83.0	69,920	69,920	227
	35	82.7	69,920	69,920	226
	40	81.4	69,860	69,860	226
	50	78.8	68,940	68,940	224
	60	76.1	53,750	64,310	222
	70	73.4	42,720	50,920	219
	80	70.6	34,750	41,460	216
	90	67.9	29,120	34,790	212
	100	65.0	24,300	29,340	208
	110	62.1	20,470	25,000	203
	120	59.1	17,340	21,460	197
	130	56.0	14,740	18,510	191
	140	52.8	12,540	16,020	183
	150	49.4	10,670	13,900	175
160	45.9	9,050	12,060	166	
170	42.1	7,630	10,450	156	
180	38.1	6,380	9,030	143	
190	33.6	5,260	7,770	129	
200	28.4	4,280	6,650	112	
210	22.2	3,380	5,640	91	
220	13.4	2,580	4,730	59	
230' boom	36	82.8	64,050	64,050	236
	40	81.8	64,040	64,040	236
	50	79.2	63,190	63,190	234
	60	76.7	53,120	61,500	232
	70	74.1	42,230	50,590	229
	80	71.5	34,270	41,110	226
	90	68.9	28,670	34,460	223
	100	66.2	23,960	29,000	219
	110	63.4	20,120	24,650	214
	120	60.6	16,990	21,100	208
	130	57.7	14,380	18,160	202
	140	54.7	12,180	15,660	196
	150	51.6	10,310	13,540	188
	160	48.3	8,680	11,690	180
170	44.8	7,260	10,080	170	
180	41.2	6,010	8,660	159	
190	37.2	4,890	7,400	147	
200	32.8	3,900	6,280	132	
210	27.8	3,010	5,270	115	
220	21.7	2,200	4,350	93	
230	13.1	1,470	3,400	60	
240' boom	37	82.8	59,860	59,860	246
	40	82.1	59,710	59,710	246

(continued)

*With Optional Front Bumper Outrigger

LIFT CRANE RATINGS IN POUNDS (cont.)

With 77SL Tubular Chord Lattice Boom With Hammerhead and "A-B" Counterweight (68,000 lbs.) In Extended Position Plus 180,000 lbs. Front Bumper Counterweight

Boom Length In Feet	Radius In Feet	Boom Angle Degrees	Outriggers Set		Ft. From Boom Pt. to Ground
			Over Front* Or Side	Over Rear	
240' boom (cont.)	50	79.7	58,700	58,700	244
	60	77.3	52,610	57,090	242
	70	74.8	41,730	50,260	240
	80	72.3	33,810	40,780	237
	90	69.8	28,220	34,120	233
	100	67.2	23,530	28,660	229
	110	64.6	19,780	24,300	225
	120	61.9	16,640	20,750	220
	130	59.2	14,030	17,800	214
	140	56.4	11,830	15,310	208

Boom Length In Feet	Radius In Feet	Boom Angle Degrees	Outriggers Set		Ft. From Boom Pt. to Ground
			Over Front* Or Side	Over Rear	
240' boom (cont.)	150	53.4		13,170	201
	160	50.4		11,330	193
	170	47.2	9,940	9,710	184
	180	43.8	8,210	8,190	174
	190	40.3	6,890	7,030	163
	200	36.4	5,640	5,910	150
	210	32.1	4,520	4,890	1335
	220	27.2	3,540	3,990	117
	230	21.2	2,620	3,160	95
	240	12.9	1,820	1,820	61

8470.25

*With Optional Front Bumper Outrigger

LIFT CRANE RATINGS IN POUNDS

With 77SL Tubular Chord Lattice Boom With Hammerhead and "A" Counterweight (30,200 lbs.) In Extended Position Plus 18,000 lbs. Front Bumper Counterweight

Boom Lgth.	Radius In Feet	Boom Angle Degrees	Free Over Side	Free Over Rear	Outriggers Set		Feet From Boom Point
					Over Front* Or Side	Over Rear	
50' boom	12	84.3	70,510	106,660	343,280	360,000	58
	13	83.1	65,760	102,780	323,130	360,000	58
	14	82.0	61,470	99,060	304,020	340,150	58
	15	80.9	57,730	95,670	287,330	317,500	58
	20	75.0	43,560	81,300	222,390	238,120	57
	25	69.0	34,270	70,340	172,150	190,480	55
	30	62.8	27,810	61,800	122,820	146,770	53
	35	56.0	22,950	54,820	94,310	113,300	50
	40	48.7	19,110	45,590	75,900	91,630	46
	50	29.7	13,550	33,340	53,580	65,280	32
60' boom	13	84.3	65,140	101,820	321,640	360,000	68
	14	83.3	60,870	98,130	303,840	339,970	68
	15	82.4	57,150	94,770	287,060	317,330	68
	20	77.6	43,080	80,530	222,200	237,990	67
	25	72.6	33,840	69,640	170,220	190,360	65
	30	67.6	27,450	61,200	123,170	147,100	64
	35	62.3	22,640	54,320	94,570	113,550	61
	40	56.7	18,830	45,560	76,110	91,820	58
	50	44.1	13,380	33,370	53,780	65,480	50
	60	26.9	9,500	25,520	40,620	49,940	35
70' boom	14	84.3	60,240	97,230	302,380	339,780	78
	15	83.4	56,560	93,910	285,750	317,170	78
	20	79.4	42,560	79,760	221,800	237,860	77
	25	75.2	33,370	68,940	168,420	190,240	76
	30	70.9	27,050	60,590	123,360	147,290	74
	35	66.5	22,280	53,770	94,700	113,670	72
	40	62.0	18,490	45,440	76,180	91,890	70
	50	52.1	13,110	33,270	53,830	65,520	63
	60	40.6	9,290	25,450	40,680	49,990	53
	70	24.7	6,510	20,080	31,630	39,800	37
80' boom	14	85.0	59,470	96,200	302,190	339,590	88
	15	84.3	55,820	92,920	285,580	317,000	88
	20	80.7	41,900	78,870	221,250	237,730	87
	25	77.1	32,760	68,120	166,850	190,130	86
	30	73.4	26,500	59,840	122,430	147,330	85
	35	69.6	21,770	53,080	94,690	113,650	83
	40	65.7	18,000	45,200	76,120	91,820	81
	50	57.6	12,670	33,040	53,730	65,420	76

Boom Lgth.	Radius In Feet	Boom Angle Degrees	Free Over Side	Free Over Rear	Outriggers Set		Feet From Boom Point
					Over Front* Or Side	Over Rear	
80' boom (cont.)	60	48.5	8,890	25,240	40,570	49,870	68
	70	37.8	6,200	19,920	31,630	39,730	57
	80	23.0	4,000	15,890	25,140	32,430	39
90' boom	15	84.9	55,120	91,990	284,260	316,830	98
	20	81.7	41,260	78,030	220,640	237,590	97
	25	78.5	32,180	67,350	164,870	190,020	96
	30	75.3	25,960	59,130	121,440	147,320	95
	35	71.9	21,270	52,420	94,630	113,580	94
	40	68.6	17,520	44,930	76,010	91,710	92
	50	61.5	12,240	32,790	53,600	65,280	87
	60	54.0	8,480	24,980	40,400	49,710	81
	70	45.5	5,840	19,700	31,540	39,590	72
	80	35.5	3,690	15,700	25,070	32,310	60
90	21.6	1,960	12,620	20,310	26,850	41	
100' boom	16	84.8	52,070	89,100	247,040	247,040	108
	20	82.6	41,470	78,190	203,890	237,480	107
	25	79.7	32,570	67,710	163,290	190,080	107
	30	76.8	26,220	59,370	120,960	147,600	106
	35	73.8	21,550	52,670	94,710	113,860	104
	40	70.8	17,800	45,180	76,280	91,980	103
	50	64.6	12,550	33,060	53,890	65,570	98
	60	58.1	8,800	25,260	40,700	50,000	93
	70	50.9	6,200	20,010	31,880	39,920	86
	80	43.0	4,070	16,030	25,420	32,650	76
90	33.6	2,380	12,980	20,690	27,230	63	
100	20.4	970	10,530	17,030	22,990	42	
110' boom	17	84.8	48,230	85,100	234,050	234,050	118
	20	83.2	40,760	77,270	201,770	226,950	117
	25	80.6	31,930	66,870	161,730	189,990	117
	30	78.0	25,610	58,570	119,950	147,550	116
	35	75.3	20,970	51,920	94,050	113,750	115
	40	72.6	17,240	44,860	76,130	91,830	113
	50	67.1	12,030	32,750	53,700	65,380	109
	60	61.3	8,310	24,950	40,480	49,780	105
	70	55.1	5,740	19,710	31,710	39,690	98
	80	48.4	3,640	15,750	25,250	32,430	90
	90	40.9	1,970	12,710	20,510	27,010	80
100	31.9	590	10,280	16,870	22,790	66	
110	19.4		8,300	13,980	19,410	44	

*With Optional Front Bumper Outrigger

LIFT CRANE RATINGS IN POUNDS (cont.)

With 77SL Tubular Chord Lattice Boom With Hammerhead and "A" Counterweight (30,200 lbs.) In Extended Position Plus 18,000 lbs. Front Bumper Counterweight

Boom Lgth.	Radius In Feet	Boom Angle Degrees	Free Over Side	Free Over Rear	Outriggers Set		Feet From Boom Point
					Over Front* Or Side	Over Rear	
120' boom	18	84.7	44,960	81,590	220,560	220,560	128
	20	83.8	40,090	76,400	199,920	216,990	128
	25	81.4	31,310	66,070	160,100	189,890	127
	30	79.0	25,040	57,840	118,900	147,490	126
	35	76.6	20,430	51,240	93,360	113,630	125
	40	74.1	16,700	44,540	75,960	91,650	124
	50	69.1	11,530	32,430	53,490	65,170	120
	60	63.9	7,820	24,620	40,240	49,540	116
	70	58.4	5,290	19,420	31,530	39,460	110
	80	52.6	3,200	15,450	25,050	32,190	103
	90	46.2	1,550	12,410	20,300	26,770	95
	100	39.0		10,000	16,670	22,560	83
110	30.5		8,040	13,790	19,190	69	
120	18.5		6,400	11,440	16,420	46	
130' boom	19	84.7			207,960	207,960	138
	20	84.3			198,080	206,060	138
	25	82.1			158,480	189,800	137
	30	79.8			117,820	147,390	136
	35	77.6			92,650	113,480	135
	40	75.3			75,460	91,450	134
	50	70.7			53,250	64,920	131
	60	66.0			39,960	49,260	127
	70	61.1			31,300	39,190	122
	80	55.9			24,810	31,900	116
	90	50.3			20,040	26,470	108
	100	44.3			16,400	22,260	99
	110	37.4			13,520	18,900	87
120	29.2			11,190	16,150	71	
130	17.8			9,240	13,850	47	
140' boom	20	84.7			190,730	190,730	148
	25	82.6			156,690	185,980	147
	30	80.6			116,950	147,270	146
	35	78.5			91,910	113,300	145
	40	76.4			74,940	91,230	144
	50	72.2			52,990	64,660	141
	60	67.8			39,680	48,970	138
	70	63.3			31,070	38,900	133
	80	58.6			24,550	31,610	128
	90	53.7			19,780	26,170	121
	100	48.4			16,130	21,960	113
	110	42.6			13,240	18,590	103
	120	36.0			10,910	15,850	90
	130	28.1			8,980	13,560	74
140	17.1			7,330	11,600	49	
150' boom	26	82.7			145,370	145,930	157
	30	81.2			115,940	143,940	156
	35	79.3			91,500	113,260	156
	40	77.3			74,590	91,180	155
	50	73.4			52,970	64,640	152
	60	69.4			39,660	48,950	149
	70	65.2			31,060	38,910	144
	80	60.9			24,550	31,620	139
	90	56.4			19,780	26,180	133
	100	51.7			16,140	21,970	126
	110	46.6			13,270	18,620	117
	120	41.0			10,940	15,880	106
	130	34.7			9,010	13,590	93
	140	27.1			7,380	11,660	76
	150	16.4			5,980	9,990	50
160' boom	27	82.8			134,540	134,540	167
	30	81.8			114,930	134,540	167
	35	79.9			90,790	113,120	166
	40	78.1			73,950	90,990	165
	50	74.4			52,730	64,400	162
	60	70.7			39,390	48,680	159
	70	66.9			30,840	38,630	155
	80	62.9			24,300	31,320	151
	90	58.8			19,520	25,890	145
	100	54.5			15,870	21,670	138
	110	49.9			12,980	18,310	130
	120	45.0			10,650	15,570	121
	130	39.6			8,720	13,280	110
	140	33.6			7,100	11,360	96
	150	26.2			5,710	9,700	78
	160	15.9			4,500	8,250	51

Boom Lgth.	Radius In Feet	Boom Angle Degrees	Free Over Side	Free Over Rear	Outriggers Set		Feet From Boom Point
					Over Front* Or Side	Over Rear	
170' boom	28	82.9			123,230	123,230	177
	30	82.2			114,120	123,230	177
	35	80.5			90,050	112,950	176
	40	78.8			73,440	90,780	175
	50	75.4			52,380	64,150	173
	60	71.9			39,110	48,400	170
	70	68.3			30,600	38,350	166
	80	64.6			24,040	31,030	162
	90	60.8			19,250	25,580	157
	100	56.9			15,590	21,370	150
	110	52.7			12,700	18,000	143
	120	48.3			10,350	15,250	135
	130	43.6			8,420	12,960	125
140	38.4			6,790	11,030	113	
150	32.5			5,410	9,380	99	
160	25.4			4,200	7,940	81	
170	15.4			3,160	6,680	53	
180' boom	29	83.0			112,940	112,940	187
	30	82.7			112,940	112,940	187
	35	81.1			89,350	112,790	186
	40	79.5			72,780	90,550	185
	50	76.2			51,910	63,890	183
	60	72.9			38,820	48,100	180
	70	69.6			30,340	38,050	177
	80	66.1			23,770	30,710	173
	90	62.6			18,960	25,250	168
	100	58.9			15,280	21,020	162
	110	55.1			12,390	17,660	156
	120	51.1			10,040	14,910	148
	130	46.9			8,100	12,620	139
140	42.3			6,460	10,680	129	
150	37.3			5,080	9,030	117	
160	31.6			3,880	7,590	102	
170	24.7			2,830	6,340	83	
180	14.9			1,900	5,220	54	
190' boom	31	82.8			104,390	104,390	197
	35	81.5			88,590	104,390	196
	40	80.0			72,250	90,320	195
	50	76.9			51,440	63,260	193
	60	73.8			38,520	47,800	191
	70	70.7			30,030	37,740	187
	80	67.4			23,480	30,390	184
	90	64.1			18,660	24,920	179
	100	60.7			14,970	20,690	174
	110	57.2			12,060	17,310	168
	120	53.5			9,720	14,570	161
	130	49.6			7,770	12,270	153
	140	45.5			6,140	10,340	144
	150	41.1			4,750	8,680	133
160	36.2			3,540	7,250	120	
170	30.7			2,500	5,990	105	
180	24.0			1,580	4,890	85	
190	14.5			760	3,900	55	
200' boom	32	82.8			79,450	79,450	207
	35	82.0			79,450	79,450	206
	40	80.5			71,630	79,450	205
	50	77.6			51,180	63,470	204
	60	74.7			38,370	47,650	201
	70	71.7			29,910	37,620	198
	80	68.6			23,350	30,270	194
	90	65.5			18,530	24,800	190
	100	62.3			14,850	20,570	185
	110	59.0			11,940	17,200	180
	120	55.6			9,590	14,450	173
	130	52.1			7,660	12,170	166
	140	48.3			6,020	10,230	157
	150	44.3			4,640	8,580	148
160	40.0			3,440	7,150	136	
170	35.3			2,400	5,900	123	
180	29.9			1,470	4,790	107	
190	23.4			660	3,810	97	
200	14.1				2,930	56	

(continued)

*With Optional Front Bumper Outrigger

LIFT CRANE RATINGS IN POUNDS (cont.)

With 77SL Tubular Chord Lattice Boom With Hammerhead and "A" Counterweight (30,200 lbs.) In Extended Position Plus 18,000 lbs. Front Bumper Counterweight

Boom Lgth.	Radius In Feet	Boom Angle Degrees	Free Over Side	Free Over Rear	Outriggers Set		Feet From Boom Point
					Over Front* Or Side	Over Rear	
210' boom	33	82.9			74,820	74,820	217
	35	82.4			74,800	74,800	216
	40	81.0			71,130	74,800	216
	50	78.2			50,730	63,220	214
	60	75.4			38,010	47,370	211
	70	72.6			29,620	37,340	209
	80	69.7			23,090	29,970	205
	90	66.8			18,250	24,490	201
	100	63.8			14,560	20,250	196
	110	60.7			11,640	16,880	191

Boom Lgth.	Radius In Feet	Boom Angle Degrees	Free Over Side	Free Over Rear	Outriggers Set		Feet From Boom Point
					Over Front* Or Side	Over Rear	
210' boom (cont.)	120	57.5			9,290	14,120	185
	130	54.2			7,340	11,820	178
	140	50.7			5,710	9,900	171
	150	47.1			4,310	8,230	162
	160	43.2			3,110	6,800	152
	170	39.0			2,060	5,550	140
	180	34.4			1,150	4,450	126
	190	29.1				3,460	110
	200	22.8				2,590	89
	210	13.8				1,800	57

*With Optional Front Bumper Outrigger

8470.23

CRANE RATING DATA

Load ratings are in pounds and do not exceed 85% of the load which would cause tipping with crane standing level on firm uniformly supporting surface. Safe loads depend on ground conditions, boom length, radius of operation, and proper handling, all of which must be taken into consideration by user.

Tire inflation pressure for "Free Ratings" is 115 P.S.I. Free ratings do not exceed maximum permissible tire load. Tire pressure shall be reduced for over-the-road-travel.

Approved working areas "Free Over Side" and "Free Over Rear" are shown under Diagram No. 1. Approved working areas "Outriggers Extended and Set Over Side, Front or Rear" are shown under Diagram No. 2.

"Radius in feet" is the horizontal distance at crane base level from center pin to a vertical line through the center of gravity of the suspended load.

Lifting is approved only in those areas for which ratings are shown in the rating chart. Blocks, slings, buckets, and other load carrying devices are considered part of the load. Retractable A-frame must be in fully raised position for all ratings. Ratings in shaded areas are limited by strength of material or factors other than stability.

Main load line is 1 inch diameter with a minimum breaking strength of 115,000 pounds. Boom suspension line is 3/4 inch diameter with a minimum breaking strength of 58,800 pounds. Boom suspension pendants are 1-1/4 inch diameter with a minimum breaking strength of 175,800 pounds.

Boom and jib erection is over the rear of the machine with outriggers extended and set and with specified counterweight. A-frame must be fully raised and blocks, slings and other load carrying devices must be on the ground.

Compliance to B30.5 based on AMERICAN® carrier mounting.

Designed and rated to comply with ANSI Code B30.5.

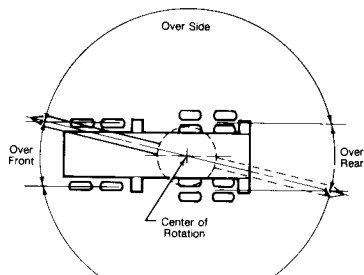


DIAGRAM NO. 1
FREE RATINGS

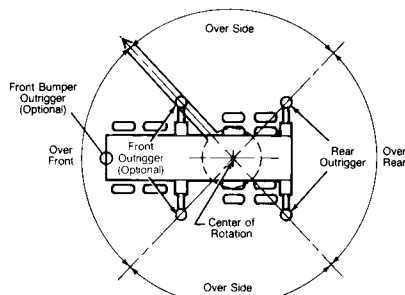


DIAGRAM NO. 2
OUTRIGGERS EXTENDED AND SET

LOAD HOISTING DATA

Maximum Lifting Capacity in Pounds	Minimum Parts of Load Line	Maximum Hoisting Distance	
		Main (R.H.) Drum	Aux. (L.H.) Drum
360,000	12	70	49
330,000	11	76	53
300,000	10	84	59
270,000	9	93	65
240,000	8	105	73
210,000	7	120	84
180,000	6	140	98
150,000	5	168	118
120,000	4	210	147
90,000	3	280	196
60,000	2	420	295
30,000	1	480	590

Based on 1" dia. AAA Load Line With 115,000 lbs. Minimum Breaking Strength

BOOM AND JIB ERECTION

With "AB" Counterweight In Extended Position Plus 18,000 Lb. Front Bumper Counterweight

Boom Length	NO. 9HL Jib	NO. 16HL Jib
280 ft. 77SL Tapered Tip	—	—
270 ft. 77SL Tapered Tip	80 ft.	80 ft.
260 ft. 77SL Tapered Tip	80 ft.	100 ft.
240 ft. 77SL Hammerhead	—	—
230 ft. 77SL Hammerhead	80 ft.	70 ft.
220 ft. 77SL Hammerhead	80 ft.	80 ft.

With "AB" Counterweight In Extended Position Less Front Bumper Counterweight

Boom Length	NO. 9HL Jib	NO. 16HL Jib
280 ft. 77SL Tapered Tip	—	—
260 ft. 77SL Tapered Tip	40 ft.	40 ft.
250 ft. 77SL Tapered Tip	60 ft.	50 ft.
240 ft. 77SL Tapered Tip	80 ft.	90 ft.
230 ft. 77SL Hammerhead	—	—
210 ft. 77SL Hammerhead	70 ft.	70 ft.
200 ft. 77SL Hammerhead	80 ft.	80 ft.

BOOM COMPOSITION

77SL HAMMERHEAD

Boom Length In Feet	30 ft. 77S Inner	10 ft. 77S Center	20 ft. 77S Center	50 ft. 77L Center	19.5 ft. 77H Outer Base	Hammerhead
50	1	0	0	0	1	1
60	1	1	0	0	1	1
70	1	0	1	0	1	1
80	1	1	1	0	1	1
90	1	0	2	0	1	1
100	1	0	0	1	1	1
110	1	1	0	1	1	1
120	1	0	1	1	1	1
130	1	1	1	1	1	1
140	1	0	2	1	1	1
150	1	0	0	2	1	1
160	1	1	0	2	1	1
170	1	0	1	2	1	1
180	1	1	1	2	1	1
190	1	0	2	2	1	1
200	1	0	0	3	1	1
210	1	1	0	3	1	1
220	1	0	1	3	1	1
230	1	1	1	3	1	1
240	1	0	2	3	1	1

77SL TAPERED TIP

Boom Length In Feet	30 ft. 77S Inner	10 ft. 77S Center	20 ft. 77S Center	50 ft. 77L Center	19.5 ft. 77H Outer Base	30 ft. 77L Tapered Tip
80	1	0	0	0	1	1
90	1	1	0	0	1	1
100	1	0	1	0	1	1
110	1	1	1	0	1	1
120	1	0	2	0	1	1
130	1	0	0	1	1	1
140	1	1	0	1	1	1
150	1	0	1	1	1	1
160	1	1	1	1	1	1
170	1	0	2	1	1	1
180	1	0	0	2	1	1
190	1	1	0	2	1	1
200	1	0	1	2	1	1
210	1	1	1	2	1	1
220	1	0	2	2	1	1
230	1	0	0	3	1	1
240	1	1	0	3	1	1
250	1	0	1	3	1	1
260	1	1	1	3	1	1
270	1	0	2	3	1	1
280	1	0	0	4	1	1

PERFORMANCE:

Swing Speed3.5 RPM Maximum

HOISTING PERFORMANCE:

Hoisting Function	Single Line Pull at Single Line Speed
	SLP (Pounds) at SLS (Feet Per Minute)
Main Hoist Drum:	
Low speed — bottom layer	45,000 lbs. at 81 FPM
Low speed — top layer	30,000 lbs. at 118 FPM
High speed — bottom layer	22,500 lbs. at 160 FPM
High speed — top layer	15,000 lbs. at 233 FPM
Auxiliary Hoist Drum:	
Low speed — bottom layer	45,000 lbs. at 81 FPM
Low speed — top layer	30,000 lbs. at 118 FPM
High speed — bottom layer	22,500 lbs. at 160 FPM
High speed — top layer	15,000 lbs. at 233 FPM
Auxiliary Third Drum:	
Low speed — bottom layer	37,300 lbs. at 97 FPM
Low speed — top layer	29,600 lbs. at 119 FPM
High speed — bottom layer	18,650 lbs. at 195 FPM
High speed — top layer	14,800 lbs. at 236 FPM

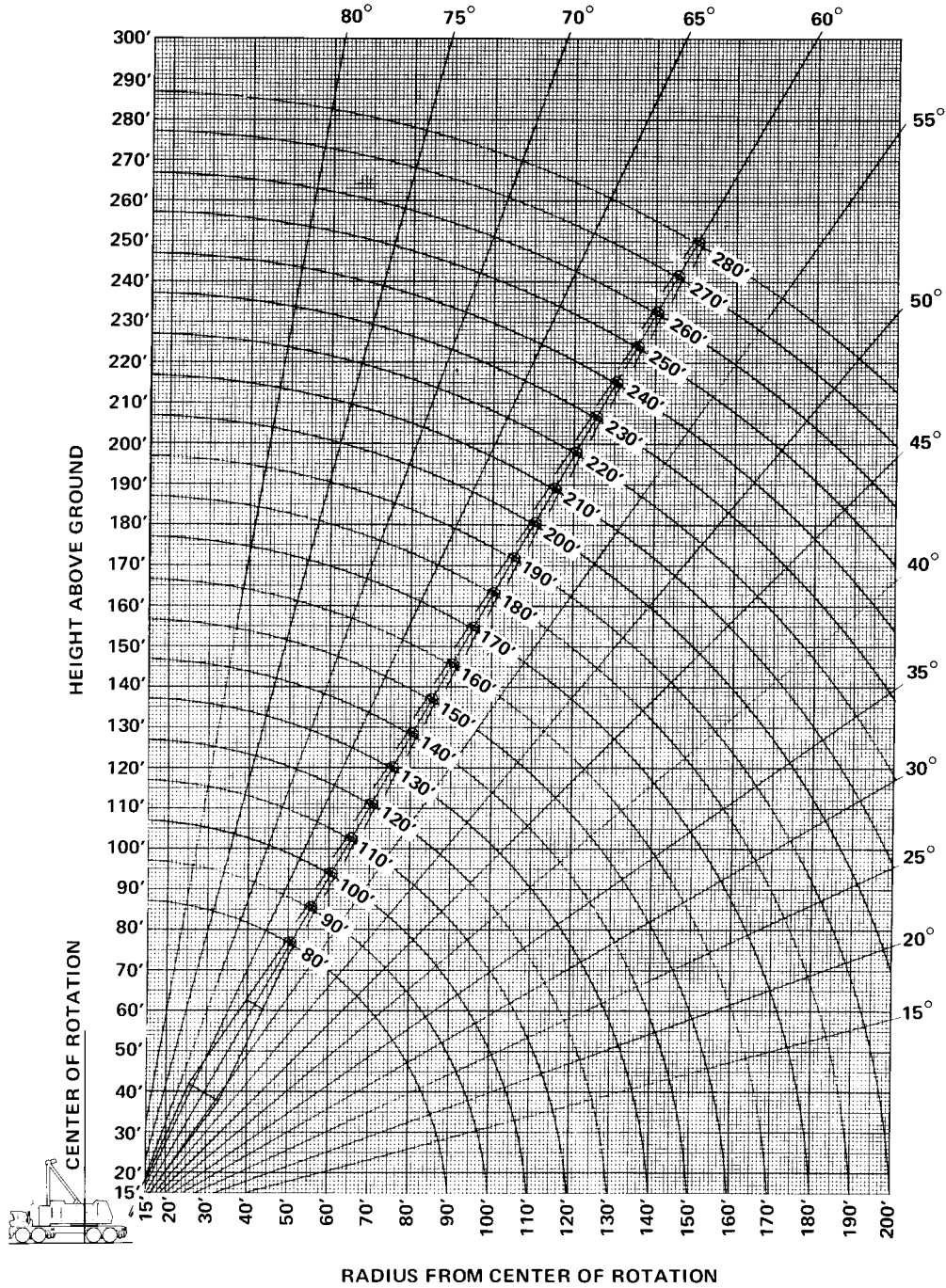
BOOMING PERFORMANCE:

Time to raise 50 ft. boom from ground to minimum radius1.9 minutes
 Time to lower 50 foot boom from minimum radius to ground1.67 minutes

NOTE: In accordance with our established policy of constant product improvement and varying material conditions, specifications are subject to change without notice and without incurring responsibility for machines previously sold.

AMERICAN MODEL 8470 TRUCK CRANE WORKING RANGES

BOOM
ANGLE
DIAGRAM



6JR8311

FORM NO. 8470-TR-2

PRINTED IN U.S.A.

SOLD & SERVICED BY:



63 SO. ROBERT ST., ST. PAUL, MN 55107



AMERICAN HOIST & DERRICK COMPANY
AN EQUAL OPPORTUNITY EMPLOYER