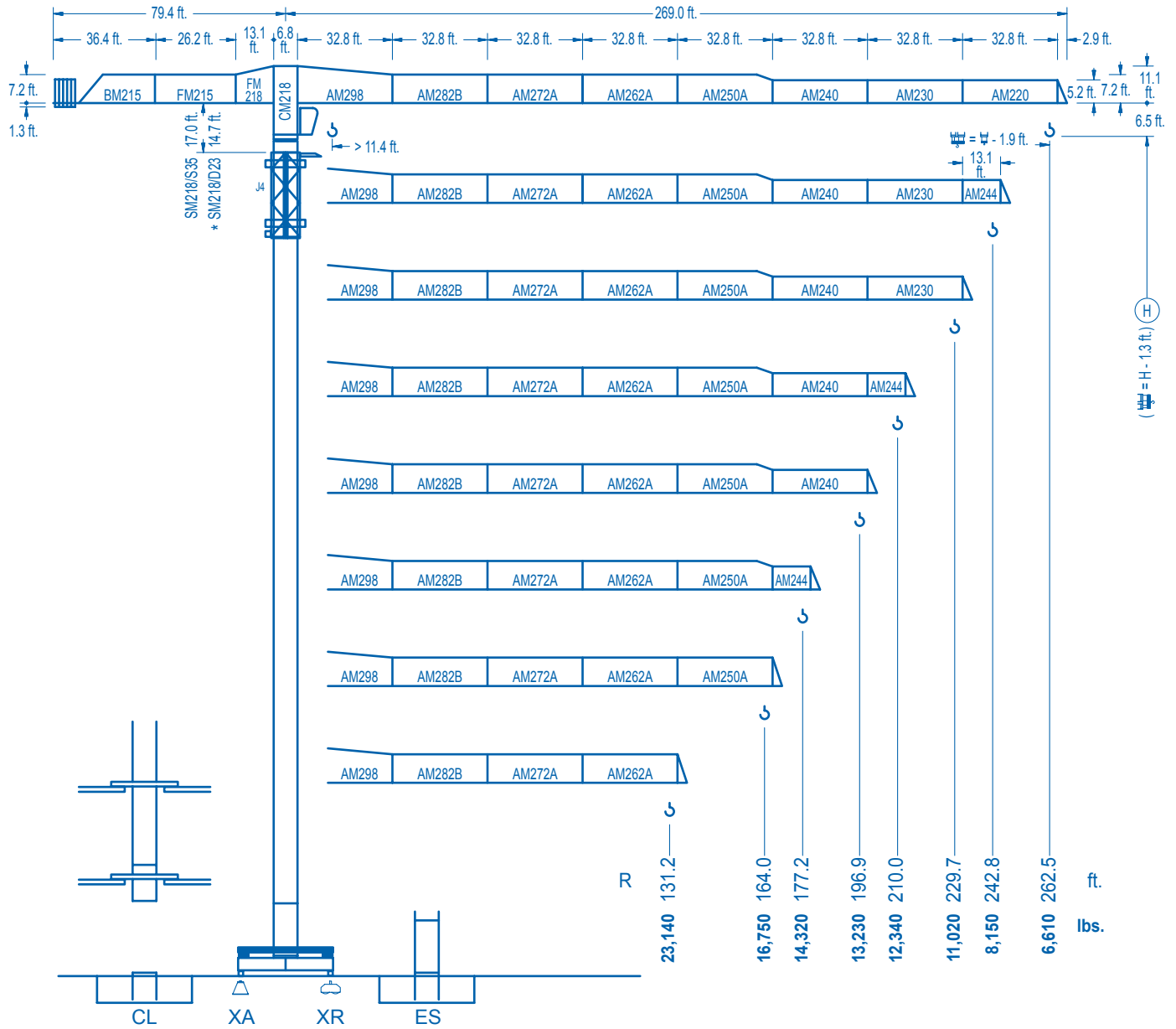


LC 2100

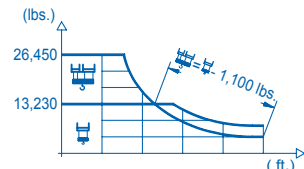
21 LC 400

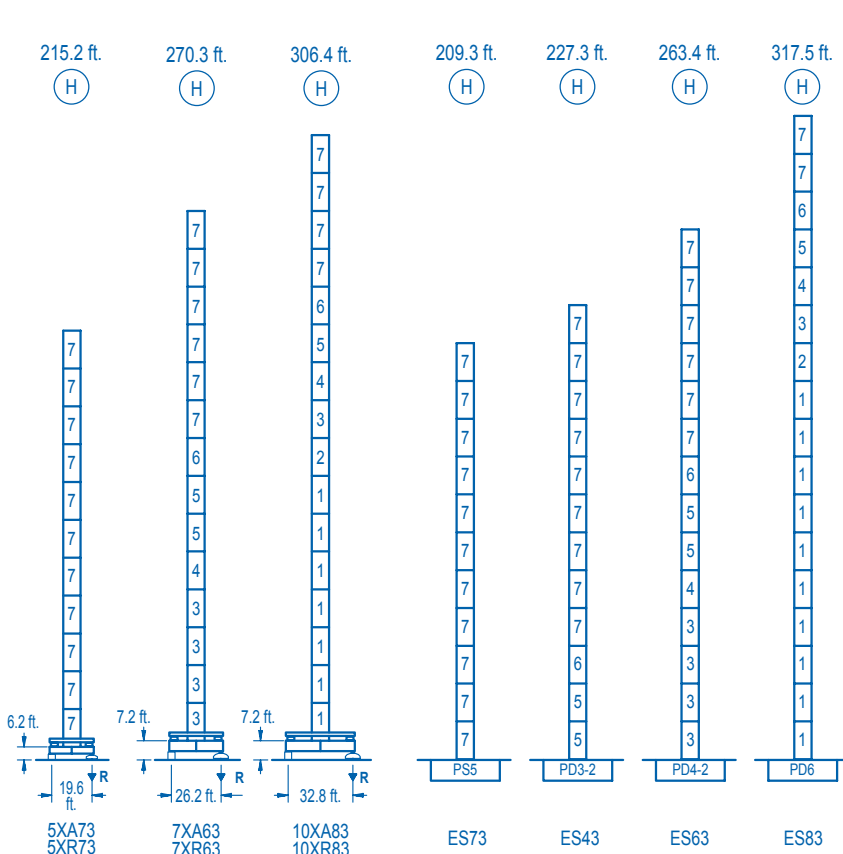
26,450 lbs.



CE EN 14439 (C/25)

R (ft.)	⚙️							⚙️							
262.5	77.4	82.0	98.4	111.5	121.4	137.8	144.0	164.0	177.2	196.9	210.0	229.7	242.8	262.5	ft.
	26,450	24,720	19,940	17,160	15,480	13,230	13,230	11,430	10,470	9,280	8,600	7,740	7,260	6,610	lbs.
242.8		84.3	98.4	111.5	121.4	131.2	150.3	158.8	177.2	196.9	210.0	229.7	242.8	ft.	
		26,450	22,040	19,000	17,170	15,610	13,230	13,230	11,700	10,380	9,640	8,690	8,150	lbs.	
229.7			101.7	111.5	121.4	131.2	144.4	164.0	181.8	195.2	210.0	229.7	ft.		
			26,450	23,730	21,500	19,620	17,510	15,010	13,230	13,230	12,190	11,020	lbs.		
210.0				102.0	111.5	121.4	131.2	144.4	164.0	182.7	197.5	210.0	ft.		
				26,450	23,880	21,640	19,750	17,630	15,110	13,230	13,230	12,340	lbs.		
196.9					105.6	111.5	121.4	131.2	144.4	164.0	189.0	196.9	ft.		
					26,450	24,830	22,510	20,560	18,380	15,770	13,230	13,230	lbs.		
177.2						104.0	111.5	121.4	131.2	144.4	164.0	177.2	ft.		
						26,450	24,430	22,150	20,220	18,070	15,500	14,320	lbs.		
164.0							109.6	111.5	121.4	131.2	144.4	164.0	ft.		
							26,450	25,900	23,500	21,470	19,200	16,750	lbs.		
131.2								114.8	121.4	131.2	ft.				
								26,450	24,840	23,140	lbs.				

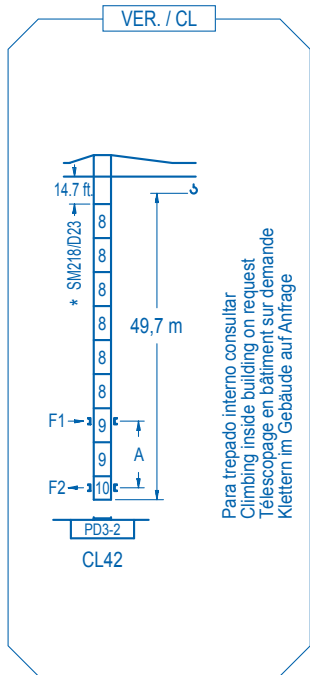




R. máx.	En servicio In operation En service In Betrieb	5XR73...283,730 lbs. 7XR63...266,320 lbs. 10XR83...274,260 lbs.	R. máx.	Fuera de servicio Out of service Hors service Ausser Betrieb	5XR73...324,300 lbs. 5XR73...415,570 lbs. 10XR83...466,060 lbs.

Para otras zonas de viento o alturas superiores consultar
 For other wind zones or additional hook heights on request
 Pour d'autres zones de vent ou des hauteurs supplémentaires sur demande
 Für andere Windzonen oder weiteren Hakenhöhen auf Anfrage

nº	Ref.	□	h
1	D36	8.2	18.0
2	TD36A	8.2	18.0
3	D34	8.2	18.0
4	TD34	8.2	18.0
5	D33	8.2	18.0
6	TD33A	8.2	18.0
7	S35	8.2	18.0
8	D23	6.5	18.0
9	D23A	6.5	18.0
10	CLD23A	6.5	10.2



Para trepado interno consultar
 Climbing inside building on request
 Téléscopage en bâtiment sur demande
 Klettern im Gebäude auf Anfrage

	5XA73	7XA63	10XA83
A max	168.6	223.7	259.8
B max	- 108.3	- 108.3	- 108.3
C max	154.9 154.9	154.9 154.9	154.9 154.9
H max	98.6 131.6	378.6 486.9	126.4 159.4

	ES73	ES43	ES63	ES83
A max	162.7	180.8	216.9	271.0
B max	108.3	108.3	108.3	108.3
C max	154.9 154.9	154.9 154.9	154.9 154.9	154.9 154.9
H max	317.6 425.9	335.6 443.9	371.7 480.0	425.9 534.1

CFU-7.5
10 hp.
0 ⇄ 308 ft./min

GR-12
4 x 88 ft.lbs.
0 ⇄ 0.7 rpm

TRA-7.5 **TRA-7.5**
2 x 55 ft.lbs. 4 x 55 ft.lbs.
0 ⇄ 78 ft./min
5XR43 7XR63 10XR83

TRA-7.5VC **TRA-7.5VC**
2 x 55 ft.lbs. 4 x 55 ft.lbs.
0 ⇄ 78 ft./min
5XR43 7XR63 10XR83

EFU3-37-30
50 hp.
1,260 ft.
Graphs showing torque vs speed for 50 hp and 87 hp configurations.

EFU5-50-30
67 hp.
2,590 ft.
Graphs showing torque vs speed for 67 hp and 87 hp configurations.

EFU6-65-30
87 hp.
2,590 ft.
Graphs showing torque vs speed for 87 hp and 110 hp configurations.

Tensión de alimentación Operating voltage Tension de service Betriebsspannung	480 V 3 ph 60 Hz
--	---

Opcional Optional En option Kaufoption	*
---	----------



Tel.: (34) 948 335 020
 Fax: (34) 948 330 810
 e-mail: info@comansa.com
 www.comansa.com

Polígono Urbizkain
 E-31620 HUARTE-PAMPLONA.- SPAIN

DS.1105.04.IA	02/11	21 LC 400	26,450 lbs.
----------------------	-------	------------------	--------------------