

125000 E



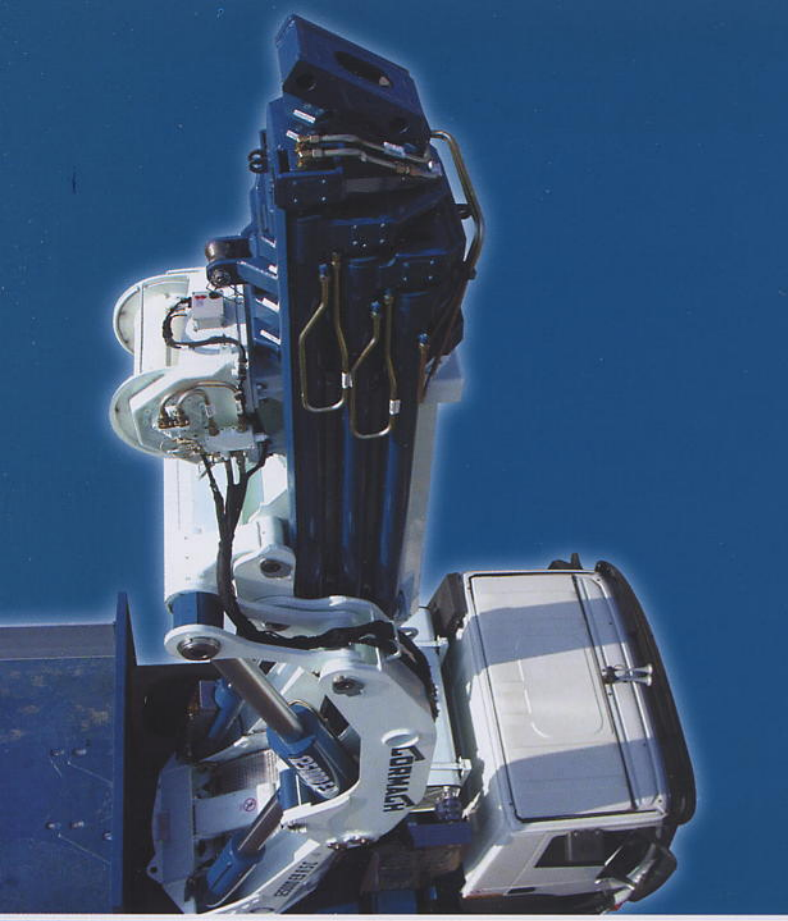
CORMACH

SISTEMA QUALITÀ
AZIENDALE

certificata in accordo alla norma
ISO 9001:2000 e sottoposta a
verifiche volontarie e periodiche



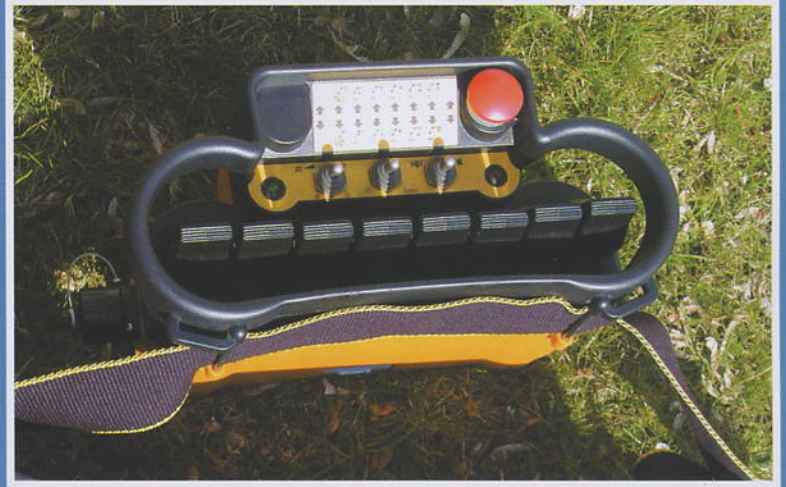
www.cormach.com



125000 E



GORMAGH

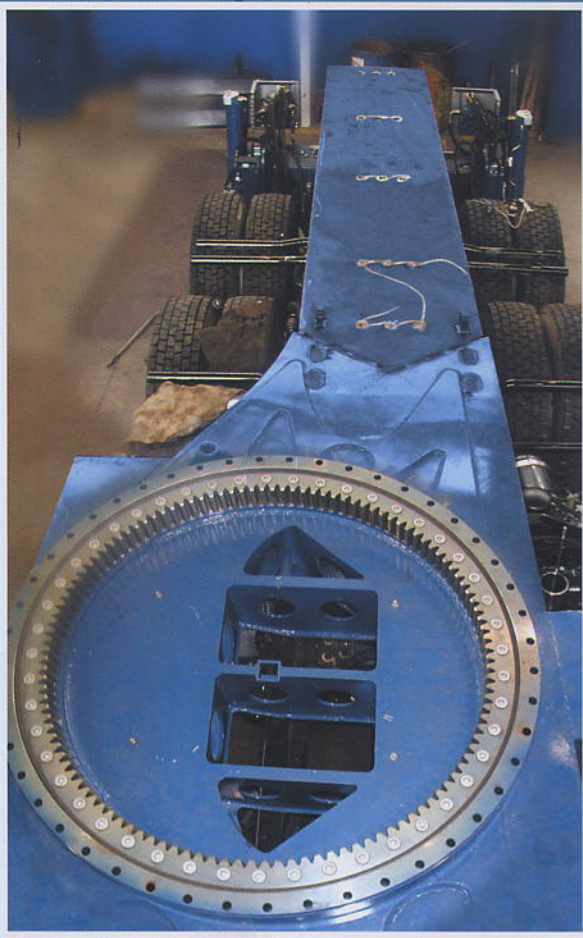


GORMACH



125000 E



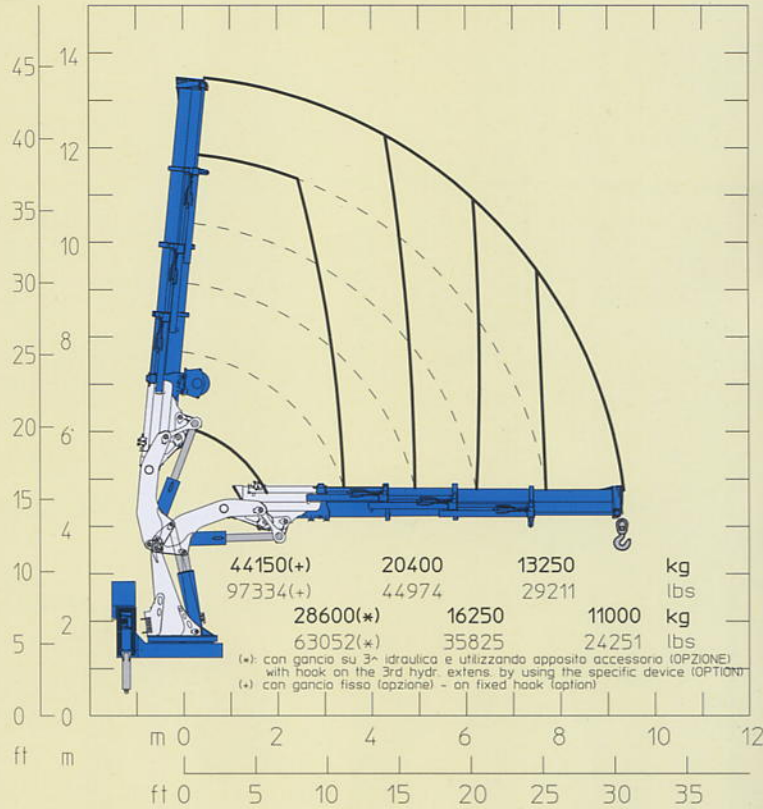
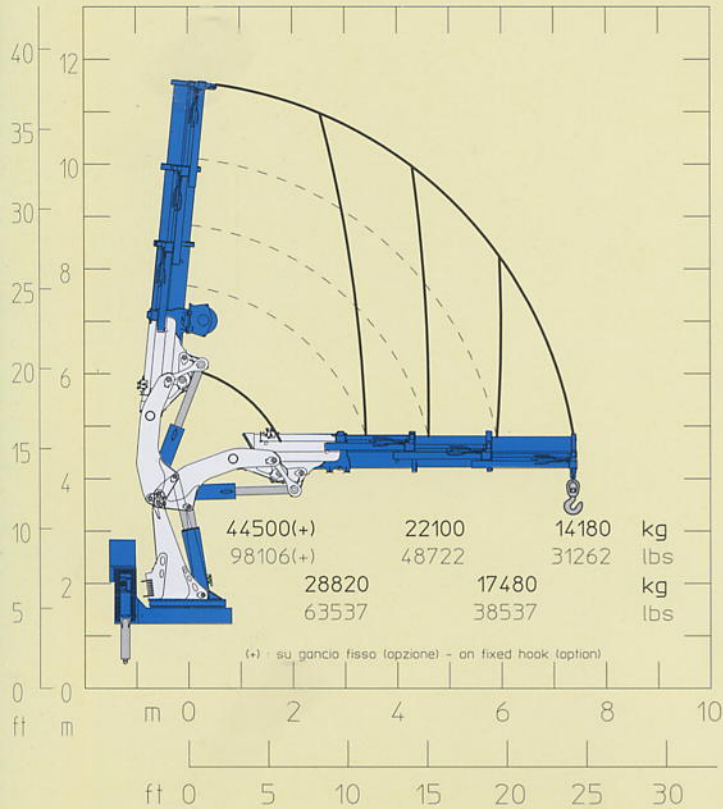


GORMAGH

125000



125000 E3 125000 E4



STANDARD



OPTIONAL



STANDARD

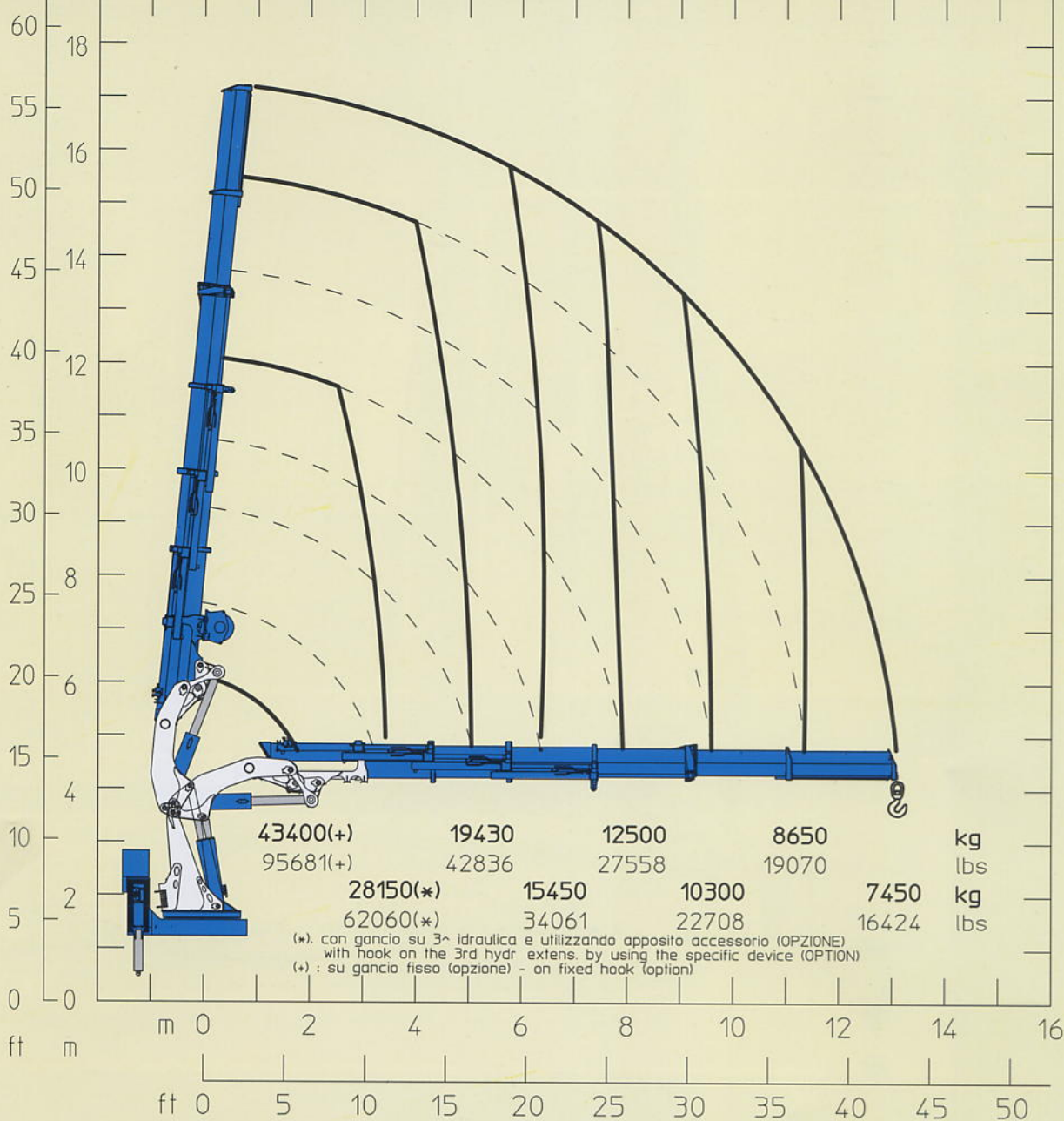


OPTIONAL



E3	E3		E4	E4
125000 daN • m	904300 lbs • ft	Momento statico massimo al perno torretta - Max. static moment at the turret pin - Moment statique max. à l'axe de la tourelle - Max. statisches Hubmoment am Kransaulenbolzen	125000 daN • m	904300 lbs • ft
7,37 m	24'2"	Sbraccio idraulico - Hyd. boom length - Longueur du bras Hyd. - Hyd. Reichweite	9,33 m	30'7"
/	/	Sbraccio con prolunghe manuali - Boom length with manual extensions - Longueur du bras avec rallonges manuelles - Auslegerlänge - Longitud del brazo hidráulico con prolongas manuales	/	/
13000 daN • m	94047 lbs • ft	Coppia di rotazione - Slew torque - Moment de rotation - Drehmoment	13000 daN • m	94047 lbs • ft
90 sec - 360°	90 sec - 360°	Tempo di rotazione - Slewing speed - Temp de rotation - Schwenkgeschwindigkeit	90 sec - 360°	90 sec - 360°
4160-3650 mm	13'8"-11'12"	Uscita stabilizzatori - Outriggers extension - Sortie des bequilles - Breite der Abstützung	4160-3650 mm	13'8"-11'12"
10100 mm	33'2"	Larghezza stabilizzatori - Outriggers width - Largeur des bequilles - Gesamtbreite der Abstützung	10100 mm	33'2"
2410 mm	7'11"	Lunghezza - Outriggers - Largeur - Gesamtbreite - Ancho	2410 mm	7'11"
2550 mm	8'4"	Larghezza - Width - Largeur - Breite	2550 mm	8'4"
2530 mm	8'4"	Altezza - Height - Hauteur - Höhe	2530 mm	8'4"
11570 Kg	25507 Lbs	Peso (senza olio e montaggio) - Weight (without oil and fitting) - Poids (sans huile et montage) - Gewicht (ohne Öl und ohne)	11970 Kg	26389 Lbs
115 l / min	30 us gal/min	Portata pompa - Pump delivery - Capacité de la pompe - Pumpenleistung	115 l / min	30 us gal/min
310 bar	4496 psi	Pressione - Pressure - Pression - Druck	310 bar	4496 psi
450	119 us gal	Capacità serbatoio olio - Oil tank capacity - Capacité du réservoir d'huile - Öl tank inhalt - Aceite	450	119 us gal

CORMAGH 125000 E6



STANDARD

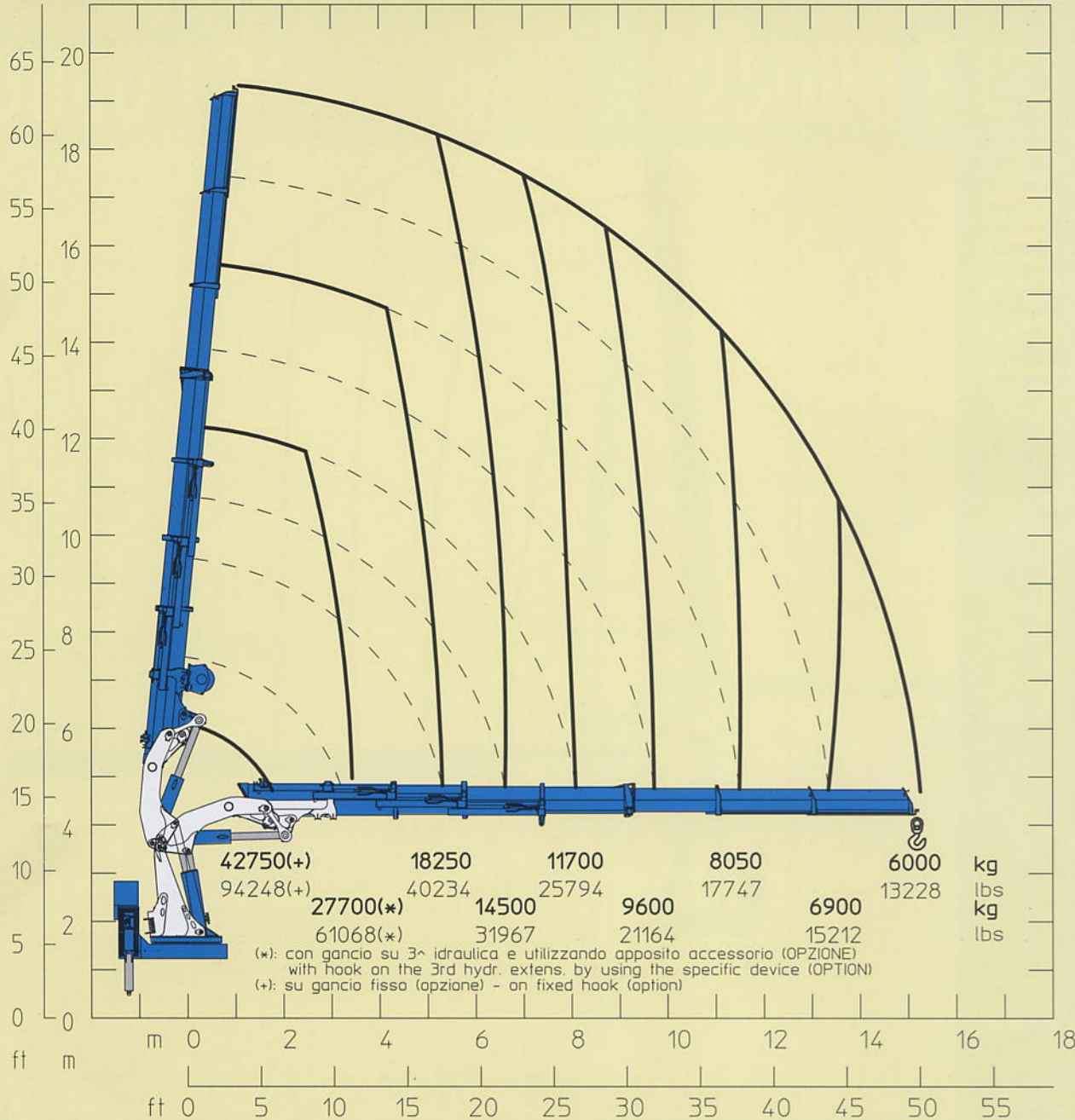


OPTIONAL



E6	E6	
125000 daN • m	904300 lbs • ft	Momento statico massimo al perno torretta - Max. static moment at the turret pin - Moment statique max. à l'axe de la tourelle - Max. statisches Hubmoment am Kransaulenbolzen
13,08 m	42'11"	Sbraccio idraulico - Hyd. boom length - Longueur du bras Hyd. - Hyd. Reichweite
/	/	Sbraccio con prolunghe manuali - Boom length with manual extensions - Longueur du bras avec rallonges manuelles - Auslegerlänge - Longitud del brazo hidráulico con prolongas manuales
13000 daN • m	94047 lbs • ft	Coppia di rotazione - Slew torque - Moment de rotation - Drehmoment
90 sec - 360°	90 sec - 360°	Tempo di rotazione - Slewing speed - Temp de rotation - Schwenkgeschwindigkeit
4160-3650 mm	13'8"+11'12"	Uscita stabilizzatori - Outriggers extension - Sortie des bequilles - Breite der Abstützung
10100 mm	33'2"	Larghezza stabilizzatori - Outriggers width - Largeur des bequilles - Gesamtbreite der Abstützung
2410 mm	7'11"	Lunghezza - Outriggers - Largeur - Gesamtbreite - Ancho
2550 mm	8'4"	Larghezza - Width - Largeur - Breite
2530 mm	8'4"	Altezza - Height - Hauteur - Höhe
12670 Kg	27933 Lbs	Peso (senza olio e montaggio) - Weight (without oil and fitting) - Poids (sans huile et montage) - Gewicht (ohne Öl und ohne)
115 lit / min	30 us gal/min	Portata pompa - Pump delivery - Capacité de la pompe - Pumpenleistung
310 bar	4496 psi	Pressione - Pressure - Pression - Druck
450	119 us gal	Capacità serbatoio olio - Oil tank capacity - Capacité du réservoir d'huile - Öl tank inhalt - Aceite

CORMAC H 125000 E7



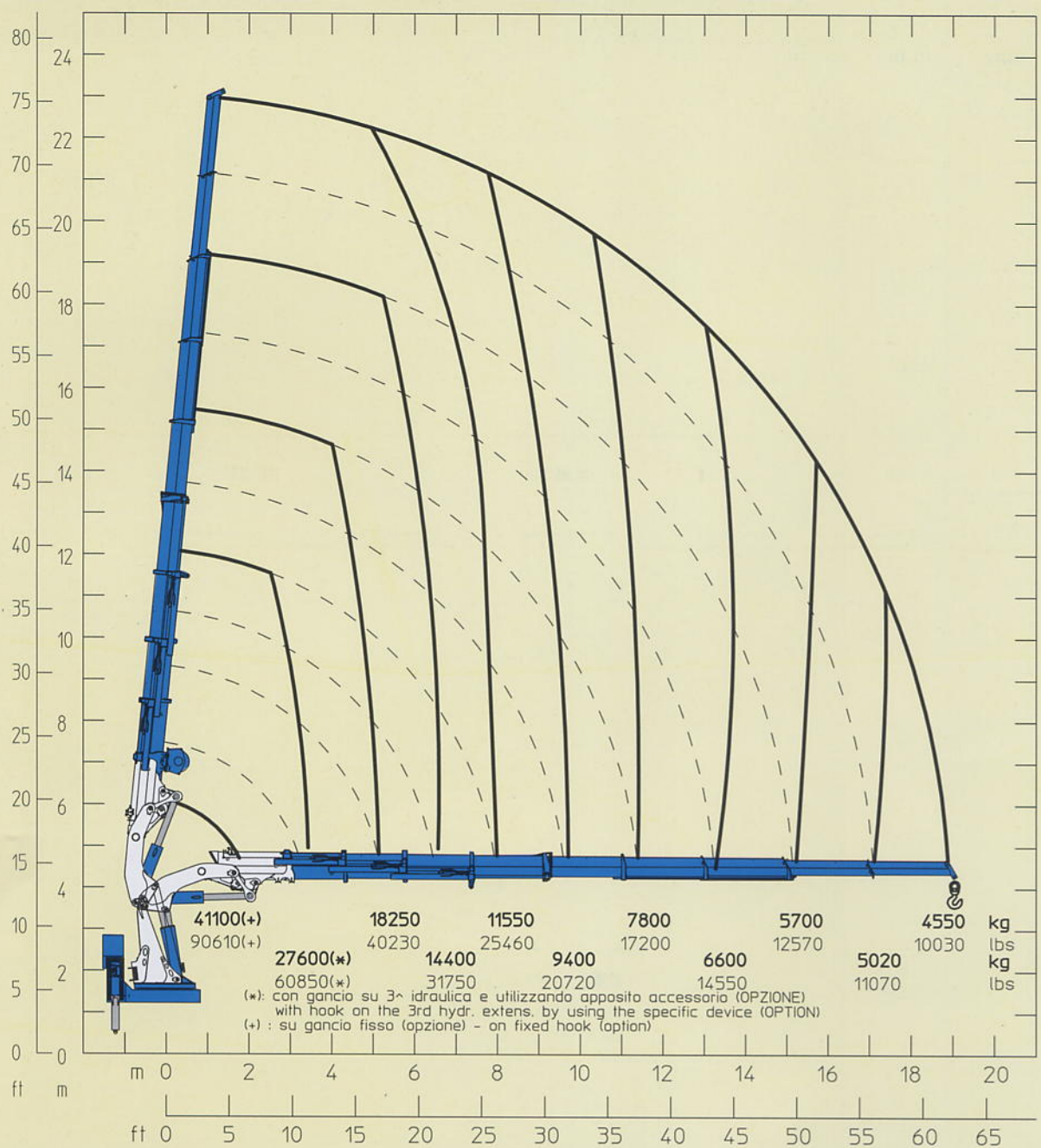
STANDARD



OPTIONAL



E7	E7	
125000 daN • m	904300 lbs • ft	Momento statico massimo al perno torretta - Max. static moment at the turret pin - Moment statique max. à l'axe de la tourelle - Max. statisches Hubmoment am Kransaulenbolzen
15,25 m	50'	Sbraccio idraulico - Hyd. boom length - Longueur du bras Hyd. - Hyd. Reichweite
/	/	Sbraccio con prolunghe manuali - Boom length with manual extensions - Longueur du bras avec rallonges manuelles - Auslegerlänge - Longitud del brazo hidráulico con prolongas manuales
13000 daN • m	94047 lbs • ft	Coppia di rotazione - Slew torque - Moment de rotation - Drehmoment
90 sec - 360°	90 sec - 360°	Tempo di rotazione - Slewing speed - Temp de rotation - Schwenkgeschwindigkeit
4160•3650 mm	13'8"•11'12"	Uscita stabilizzatori - Outriggers extension - Sortie des bequilles - Breite der Abstützung
10100 mm	33'2"	Larghezza stabilizzatori - Outriggers width - Largeur des bequilles - Gesamtbreite der Abstützung
2410 mm	7'11"	Lunghezza - Outriggers - Largeur - Gesamtbreite - Ancho
2550 mm	8'4"	Larghezza - Width - Largeur - Breite
2530 mm	8'4"	Altezza - Height - Hauteur - Höhe
13020 Kg	28704 Lbs	Peso (senza olio e montaggio) - Weight (without oil and fitting) - Poids (sans huile et montage) - Gewicht (ohne Öl und ohne)
115 lit / min	30 us gal/min	Portata pompa - Pump delivery - Capacité de la pompe - Pumpenleistung
310 bar	4496 psi	Pressione - Pressure - Pression - Druck
450	119 us gal	Capacità serbatoio olio - Oil tank capacity - Capacité du réservoir d'huile - Öl tank inhalt - Aceite



STANDARD



OPTIONAL



E9

125000 daN • m
18,93 m
/
13000 daN • m
90 sec - 360°
4160*3650 mm
10100 mm
2410 mm
2550 mm
2530 mm
13470 Kg
115 lit / min
310 bar
450

E9

904300 lbs • ft
62'1"
/
94047 lbs • ft
90 sec - 360°
13'8" * 11'12"
33'2"
7'11"
8'4"
8'4"
29696 Lbs
30 us gal/min
4496 psi
119 us gal

Momento statico massimo al perno torretta - Max. static moment at the turret pin - Moment statique max. à l'axe de la tourelle - Max. statisches Hubmoment am Kransaulenbolzen
Sbraccio idraulico - Hyd. boom length - Longueur du bras Hyd. - Hyd. Reichweite
Sbraccio con prolunghe manuali - Boom length with manual extensions - Longueur du bras avec rallonges manuelles - Auslegerlänge - Longitud del brazo hidráulico con prolongas manuales
Coppia di rotazione - Slew torque - Moment de rotation - Drehmoment
Tempo di rotazione - Slew speed - Temp de rotation - Schwenkgeschwindigkeit
Uscita stabilizzatori - Outriggers extension - Sortie des bequilles - Breite der Abstützung
Larghezza stabilizzatori - Outriggers width - Largeur des bequilles - Gesamtbreite der Abstützung
Lunghezza - Outriggers - Largeur - Gesamtbreite - Ancho
Larghezza - Width - Largeur - Breite
Altezza - Height - Hauteur - Höhe
Peso (senza olio e montaggio) - Weight (without oil and fitting) - Poids (sans huile et montage) - Gewicht (ohne Öl und ohne)
Portata pompa - Pump delivery - Capacité de la pompe - Pumpenleistung
Pressione - Pressure - Pression - Druck
Capacità serbatoio olio - Oil tank capacity - Capacité du réservoir d'huile - Öl tank inhalt - Aceite

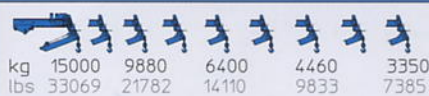
CORMAC H 125000 E9F183



STANDARD



OPTIONAL



kg	12460	7890	5290	3830
lbs	27470	17394	11662	8444



E9F183

125000 daN • m
25,77 m
/
13000 daN • m
90 sec - 360°
4160+3650 mm
10100 mm
2410 mm
2550 mm
2530 mm
14620 Kg
115 lit / min
310 bar
450

E9F183

904300 lbs • ft
84' 7"
/
94047 lbs • ft
90 sec - 360°
13' 8" + 11' 12"
33' 2"
7' 11"
8' 4"
8' 4"
32232 Lbs
30 us gal / min
4496 psi
119 us gal

Momento statico massimo al perno torretta - Max. static moment at the turret pin - Moment statique max. à l'axe de la tourelle - Max. statisches Hubmoment am Kranarmbolzen

Sbraccio idraulico - Hyd. boom length - Longueur du bras Hyd. - Hyd. Reichweite

Sbraccio con prolunghe manuali - Boom length with manual extensions - Longueur du bras avec rallonges manuelles - Auslegerlänge - Longitud del brazo hidráulico con prolongas manuales

Coppia di rotazione - Slew torque - Moment de rotation - Drehmoment

Tempo di rotazione - Slewing speed - Temp de rotation - Schwenkgeschwindigkeit

Uscita stabilizzatori - Outriggers extension - Sortie des bequilles - Breite der Abstützung

Larghezza stabilizzatori - Outriggers width - Largeur des bequilles - Gesamtbreite der Abstützung

Lunghezza - Outriggers - Largeur - Gesamtbreite - Ancho

Larghezza - Width - Largeur - Breite

Altezza - Height - Hauteur - Höhe

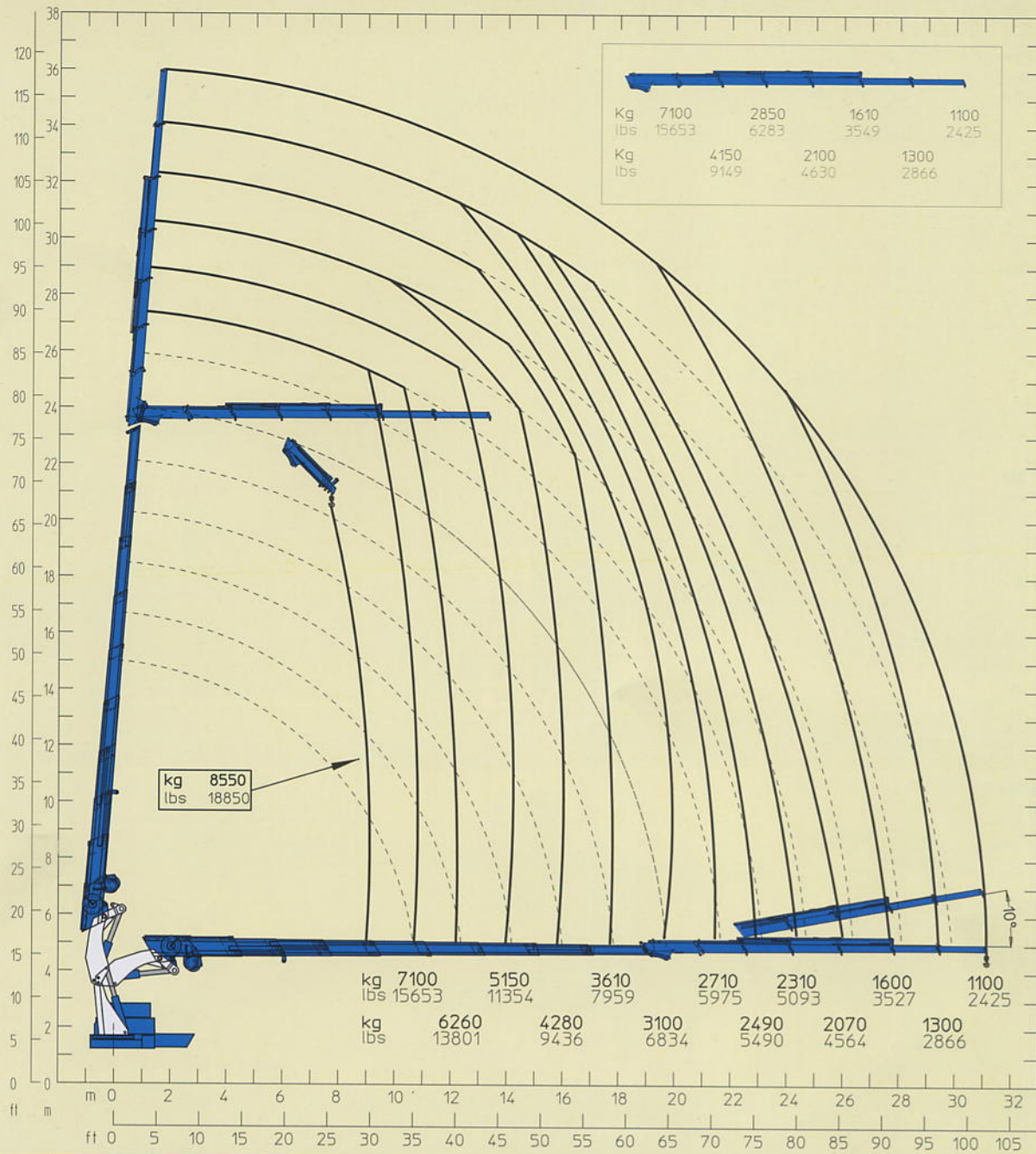
Peso (senza olio e montaggio) - Weight (without oil and fitting) - Poids (sans huile et montage) - Gewicht (ohne Öl und ohne)

Portata pompa - Pump delivery - Capacité de la pompe - Pumpenleistung

Pressione - Pressure - Pression - Druck

Capacità serbatoio olio - Oil tank capacity - Capacité du réservoir d'huile - Öl tank inhalt - Aceite

CORMAGH 125000 E9F186



STANDARD



OPTIONAL



E9F186	E9F186
125000 daN • m	904300 lbs • ft
31,15 m	102'2"
/	/
13000 daN • m	94047 lbs • ft
90 sec - 360°	90 sec - 360°
4160+3650 mm	13'8"-11'12"
10100 mm	33'2"
2410 mm	7'11"
2550 mm	8'4"
2530 mm	8'4"
14870 Kg	32783 Lbs
115 lit / min	30 us gal/min
310 bar	4496 psi
450	119 us gal

Momento statico massimo al perno torretta - Max. static moment at the turret pin - Moment statique max. à l'axe de la tourelle - Max. statisches Hubmoment am Kransaulenbolzen
Sbraccio idraulico - Hyd. boom length - Longueur du bras Hyd. - Hyd. Reichweite
Sbraccio con prolunghe manuali - Boom length with manual extensions - Longueur du bras avec rallonges manuelles - Auslegerlänge - Longitud del brazo hidráulico con prolongas manuales
Coppia di rotazione - Slew torque - Moment de rotation - Drehmoment
Tempo di rotazione - Slewing speed - Temp de rotation - Schwenkgeschwindigkeit
Uscita stabilizzatori - Outriggers extension - Sortie des bequilles - Breite der Abstützung
Larghezza stabilizzatori - Outriggers width - Largeur des bequilles - Gesamtbreite der Abstützung
Lunghezza - Outriggers - Largeur - Gesamtbreite - Ancho
Larghezza - Width - Largeur - Breite
Altezza - Height - Hauteur - Höhe
Peso (senza olio e montaggio) - Weight (without oil and fitting) - Poids (sans huile et montage) - Gewicht (ohne Öl und ohne)
Portata pompa - Pump delivery - Capacité de la pompe - Pumpenleistung
Pressione - Pressure - Pression - Druck
Capacità serbatoio olio - Oil tank capacity - Capacité du réservoir d'huile - Öl tank inhalt - Aceite

CORMAGH 125000 E

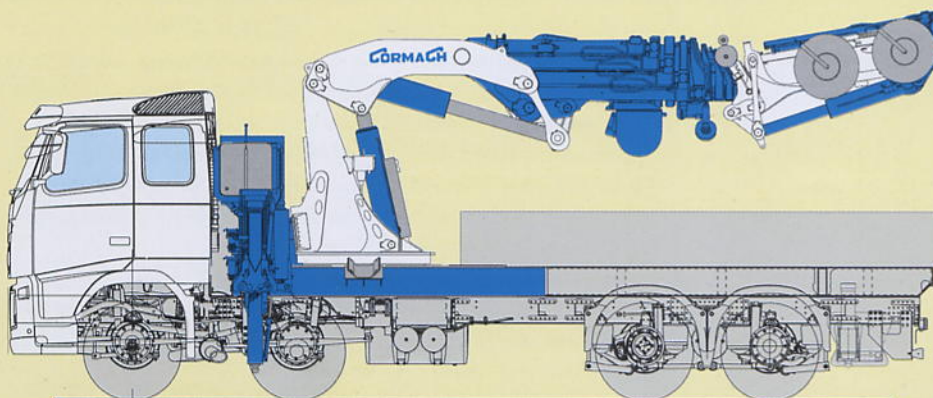
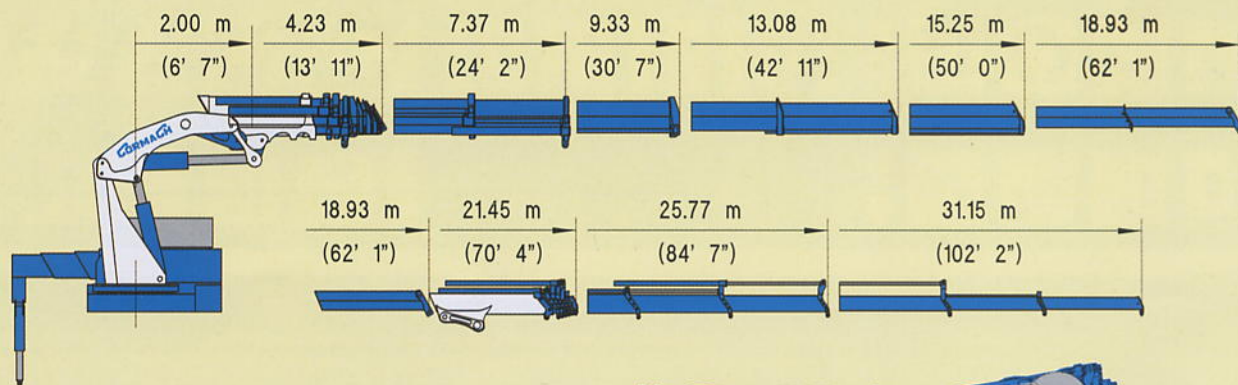
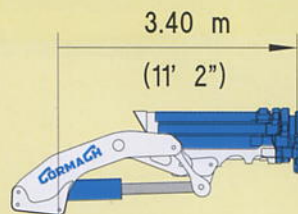
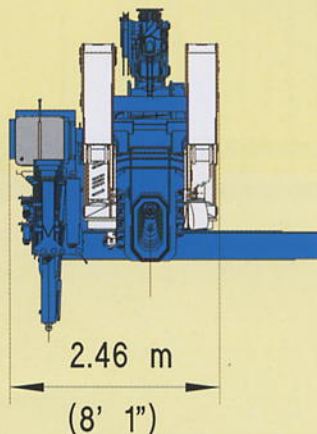
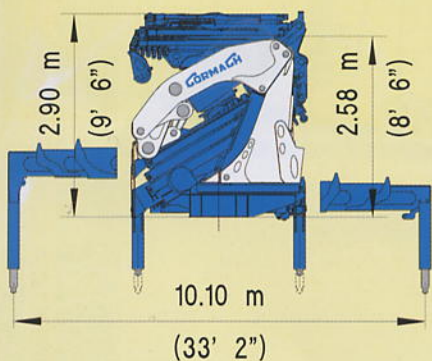
E3
E4
E6
E7
E9
E9F183
E9F186

m ft	Kg lbs	m ft	Kg lbs	m ft	Kg lbs	m ft	Kg lbs	m ft	Kg lbs	m ft	Kg lbs	m ft	Kg lbs
2.00 6' 7"	44500+ 98106+	2.00 6' 7"	44150+ 97334+	2.00 6' 7"	43400+ 95681+	2.00 6' 7"	42750+ 94248+	2.00 6' 7"	41100+ 90610+	9.00 29' 6"	9760 21517	9.00 29' 6"	8550 18850
3.40 11' 2"	28820 63537	3.40 11' 2"	28600* 63052*	3.40 11' 2"	28150* 62060*	3.40 11' 2"	27700* 61068*	3.40 11' 2"	27600* 60850*	10.46 34' 4"	8400 18519	10.70 35' 1"	7100 15653
4.60 15' 1"	22100 48722	4.91 16' 1"	20400 44974	5.05 16' 7"	19430 42836	5.30 17' 5"	18250 40234	5.24 17' 2"	18250 40230	11.96 39' 3"	7010 15454	12.20 40' 0"	6220 13801
5.91 19' 5"	17480 38573	6.22 20' 5"	16250 35825	6.36 20' 10"	15450 34061	6.61 21' 8"	14500 31967	6.55 21' 6"	14400 31750	13.73 45' 10"	5820 12831	13.97 45' 10"	5150 11354
7.37 24' 2"	14180 31262	7.69 25' 3"	13250 29211	7.82 25' 8"	12500 27558	8.08 26' 6"	11700 25794	8.01 26' 3"	11550 25460	15.58 51' 10"	4890 10781	15.82 51' 11"	4280 9436
		9.33 30' 7"	11000 24251	9.47 31' 1"	10300 22708	9.72 31' 11"	9600 21164	9.66 31' 8"	9400 20720	17.47 57' 4"	4160 9171	17.71 58' 1"	3610 7959
				11.24 36' 11"	8650 19070	11.49 37' 8"	8050 17747	11.43 37' 6"	7800 17200	19.40 63' 8"	3600 7937	19.64 64' 5"	3100 6834
				13.08 42' 11"	7450 16424	13.34 43' 9"	6900 15212	13.27 43' 6"	6600 14550	21.21 69' 7"	3170 6989	21.45 70' 4"	2710 5975
						15.25 50' 0"	6000 13228	15.17 49' 9"	5700 12570	22.67 74' 5"	2950 6504	22.91 75' 2"	2490 5490
								17.11 56' 2"	5020 11070	24.12 79' 2"	2750 6063	24.36 79' 11"	2310 5093
								18.93 62' 1"	4550 10030	25.77 84' 7"	2570 5666	26.01 85' 4"	2070 4564
												27.66 90' 9"	1600 3527
												29.43 96' 7"	1300 2866
												31.15 102' 2"	1100 2425

(+) Su gancio fisso (OPZIONE).




















(+) On fixed hook (OPTION).

 (*) Con gancio su 3^a idraulica e usando
 apposito accessorio (OPZIONE).

 (*) With hook on the 3rd hydr. ext. by
 using the specific device (OPZIONE).




LEGENDA

	Comandi bilaterali Dual control stations Commandes à gauche et à droite Beidseitige Bedienung Mandos bilaterales		Limitatore di momento Load limiting device Limiteur de charge Überlastabschaltung Limitador de momento (de carga)		Stabilizzatori gru base girevoli Tilt up outriggers Stabilisateurs tournant Drehbare Stützen Estabilizadores giratorios de la grua base		Stabilizzatori gru base estendibili idraulicamente Outriggers with hydraulic extension Stabilisateurs avec extension hydraulique Hydraulisch Ausfahrbare stützen Estabilizadores grua base desplegables hidraulicamente
	Comando supplementare non attivato Additional free section not activated Section du distributeur pas activée Zusätzlicher steuerschieber Mando auxiliar no activado		Doppia rotazione Double rotation group Groupe de rotation double Doppelte Drehgruppe Doble grupo de rotación		Radiocomando Radio remote control Radiocommandes Funkfernsteuerung Radiomando		Telecomando Cable remote control Telecommandes Kabelfernsteuerung Control remoto
	Rotazione continua Continuous rotation Rotation continue Endlos Schwenkwerk Rotación continua		Comando supplementare attivato Additional function Section du distributeur activée Zusatzfunktion Mando auxiliar activado		Verricello Winch Treuil Seilwinde Cabrestante		Trattamento marino della grua Marine treatment of the crane Traitement marin de la grue Marinebehandlung des Kranes Tratamiento especial marino de la grua
	Posto di manovra in alto Top seat Siège en haut Hochsitz Puesto de maniobra en alto		Piastre maggiorate Large ground plates Plaques stabilisateurs Bodenplatten Placas estabilizadoras de suelo de gran tamaño		Pompa a portata variabile Pump with load sensing Pompe à débit variable Verstellpumpe load sensing Bomba de caudal variable		Utilizzo con attrezzo Additional accessories Utilisation avec accessoire Zubehör Accesorios auxiliares
	Traversa ausiliaria estendibile Additional outriggers with lateral extension Stabilisateurs supplémentaires avec enlargement Ausfahrbare Zusatz-Stützen Estabilizadores adicionales con extensión lateral		Prolonghe meccaniche Manual extensions Rallonges manuelles Manuelle Verlängerungen Prolongas mecánicas		Cestello Basket Nacelle Personenkorb Cesta		

•A fronte di una continua ricerca tecnologica i dati possono cambiare senza preavviso. Contattare il nostro Ufficio Commerciale per ulteriori informazioni.

•Because of continuous technology research data can change without notice. Please, contact our Commercial Dept. for further information.

•A cause de une continue recherche technologique les données peuvent changer sans preavis. Contacter notre Bureau Commercial pour des autres informations.

•Irrtum und technische Änderung vorbehalten. Masse und Gewichte unverbindlich. Unser Vertrieb erteilt Ihnen gerne weitere Auskünfte. Bitte rufen Sie uns an.

•Debido a los continuos avances tecnológicos los datos pueden variar sin notificación previa. Para más información rogamos contacten nuestro Departamento Comercial.



CORMACH

Cormach s.r.l. - Via Madonnina, 27 - C.P. 199 - 25018 MONTICHIARI (BS) - ITALY

Tel. 0039.030.9656811 - Telefax 0039.030.9656846.7.8

E-mail: info@cormach.com - Web: <http://www.cormach.com>