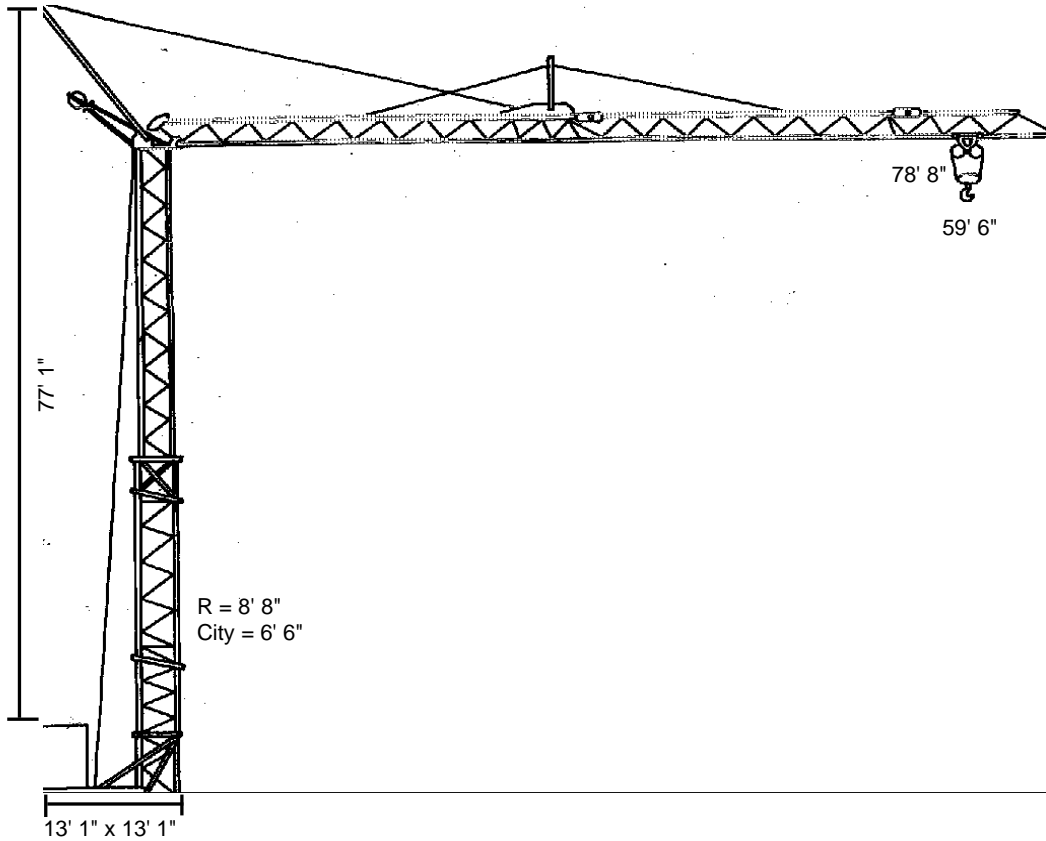


# K 24 S

## Self-erecting Crane



**KOENIG CRANES**  
**North America**

**Bringing Innovation To Construction**

Phone: 887-852-2192 Fax: 604-852-4421  
Email: [info@koenigcranes.com](mailto:info@koenigcranes.com) Internet: [www.koenigcranes.com](http://www.koenigcranes.com)

# K 24 S Technical Data

## Ausladung und Tragfähigkeit

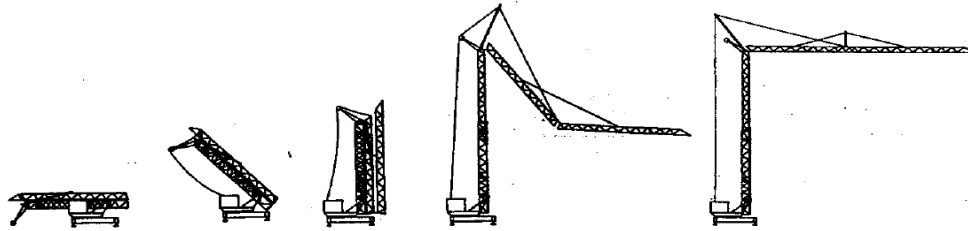
Radius and capacity *Portée et charge*

Ausladung		ft x lbs														
Ft	0°	32	36	39	42	45	49	52	55	59	62	65	68	72	75	78
Lbs		4409	4089	3769	3450	3130	3020	2910	2777	2645	2557	2469	2425	2380	2292	2205

**Heben** 147' 7"/min - 2205 Lbs (11 kW)  
**Heben** 73' 9"/min - 4409 Lbs (9 kW)  
**Katzfahren** 19' 8"/min - 4409 Lbs (3.5 kW)  
**Drehen** 131' 2"/min (0.9 kW)  
 0-1 U/min (2.2 kW)

Operation Voltage: 380V Power Requirement: 14.1 kW Cross Section of Cable: 164'  
 Frequency: 63 Amp.

## Montage Mounting Montage



## Straßentransport

Transport by road *Transport sur la route*

