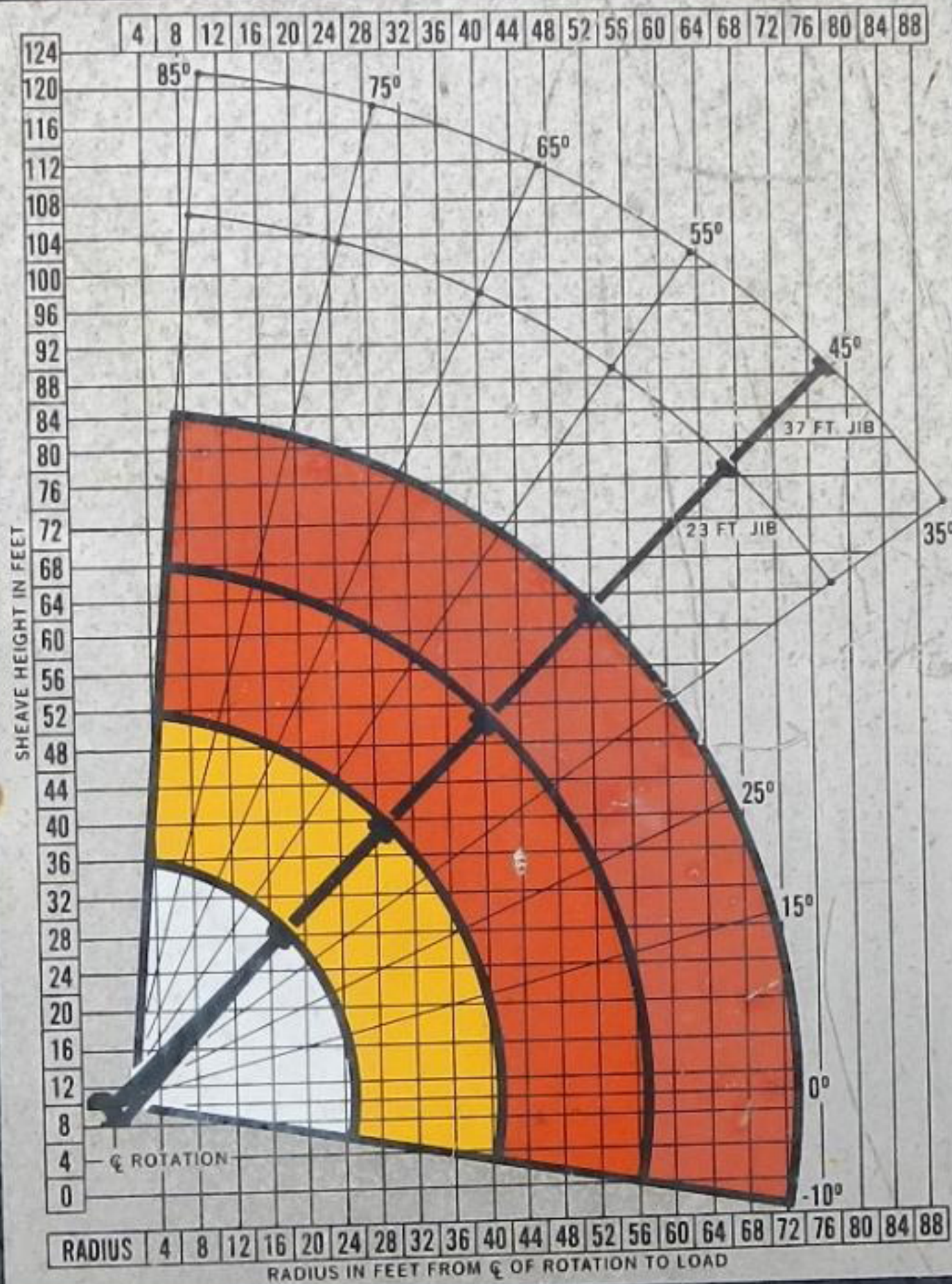


MAXIMUM LOAD CHART

THIS CHART SHOWS THE MAXIMUM LOAD INCLUDING LOAD HANDLING EQUIPMENT SUCH AS SLINGS, BUCKETS, DOWN HAUL WEIGHTS, ETC. AND THE WEIGHT OF MATERIAL BEING HANDLED. THE WEIGHT OF THE LOAD HANDLING EQUIPMENT MUST BE DEDUCTED FROM MAXIMUM LOAD RATING TO DETERMINE HOW MUCH PAYLOAD YOU CAN LIFT.

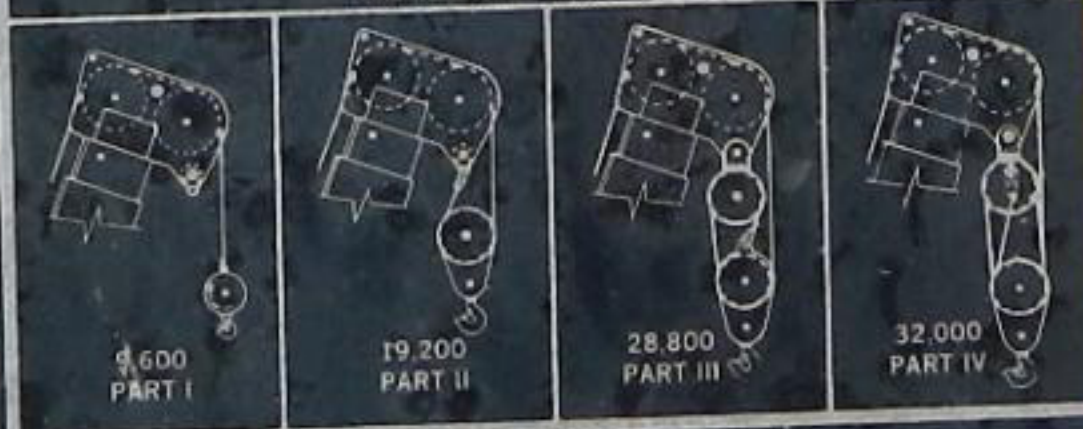
RO

175-73



BOOM RADIUS	1ST STAGE EXTENDED	2ND STAGE EXTENDED	3RD STAGE EXTENDED	4TH STAGE EXTENDED
5	32,000			
9	18,100	16,000		
10	17,500	14,900		
12	14,300	12,500	10,000	
15	12,200	10,000	8,500	8,000
20	9,500	7,500	6,700	6,200
25	6,500	5,700	4,500	5,200
30		4,700	4,500	4,400
35		3,800	3,700	3,600
40		2,500	3,000	3,100
45			2,500	2,600
50			1,700	2,200
55			1,200	1,900
60				1,600
65				1,300
70				900
73				500

ROPE AND REEVING MAX. LIFT IN POUNDS



CAUTION

KEEP AT LEAST 3 WRAPS OF LOADLINE ON DRUM AT ALL TIMES.

USE ONLY 9/16" DIAMETER WIRE ROPE WITH AN AVERAGE BREAKING STRENGTH OF 33,600 LBS. ON THIS MACHINE.

JIB CAPACITIES

BOOM ANGLE	0°	15°	25°	35°	45°	55°	65°	75°	85°
RO FIXED 23 FT. JIB	DO NOT OPERATE BELOW 35°			800	1200	1800	2500	3300	4600
RO 2 STAGE 37 FT. JIB	RETRACTED 23 FT.	DO NOT OPERATE BELOW 35°		600	900	1500	2200	3000	4300
	EXTENDED 37 FT.	DO NOT OPERATE BELOW 35°		400	600	900	1300	1800	2400

OPTIONAL CAPACITY ALERT SYSTEM IS NOT FUNCTIONAL WITH JIBS IN PLACE

RO CORPORATION - OLATHE - KANSAS 66061
U.S. PAT. NO. 4,211,332 CANADA PAT. NO. 1,097,265

THIS MACHINE COMPLIES WITH OSHA REGULATIONS 1910.180 AND 1926.550 WHERE APPLICABLE AT DATE OF MANUFACTURE.

REMOVAL OF THIS PLACARD IS A VIOLATION OF LAW.