



## THE PROPOSAL

### Truck Mounted Folding Mobile Crane

<b>COSTUMER:</b>	<b>FROM :</b>
<b>AUTHORIZED:</b>	<b>Expiration Date:</b>

Dear Sirs,

ASELKONASK 300 L8+5 type crane is considering buying the technical specifications, price, payment and delivery date, the attached information is presented. Hope that your assessment will be positive, we wish you success.

Sincerely

---

**ASELKON CRANE KAMPUS MACHINERY IND. Co. Ltd.**

Address: Fetihmahadanaçevreyolu no:113Karatay KONYA-TURKEY Tel: 0332 346 06 10 FAX:  
0332 342 65 14 www.asekon.com.tr Mail: info@asekon.com.tr



## **Technical Specifications**

### **Platform will have Independent chassis**

- To-do and the balance of the platform will be mounted to the chassis legs detached. The chassis of the vehicle chassis, screws and studs connected to the carrier. In this way, the carrier vehicle in the case of long-term failure of a carrier vehicle can be transferred to another machine easily removed.

### **Steel Construction**

- The platform chassis will be made to set foot booms WELDOX-700 quality steel sheet, the main boom and the upright boom will be produced from high-strength WELDOX -960 or equivalent material.

### **Rotation operations;**

- Slewing ring, planetary reducers, hydraulic motor, hydraulic brakes and hydraulic distributor which provides the infinite return will be used.

### **The feet Balance**

- 2 pieces under the platform, 2 pieces backside and 2 pieces under the chassis vertical and horizontal mobile hydraulic leg of the balance will be a total of 6 pieces. These legs will be mounted in the frame of the independent platform. Angled legs during the operation of the crane will come down, meanwhile the carrier vehicle's chassis, axles and shears will not load.
- Combined bending and torsion foot booms sensitive resources, etc. as resistant high-strength material type of box will be manufactured.
- On the foot of retainers imported blocking valves will be used.

### **Boom Group**

- 1 upright boom,1 main boom, 1 folding boom,8 hydraulic extension booms,2 mechanic booms, and the second folding will be consisted of 5 hydraulic booms and 2 mechanic booms.
- Wear and reduces friction between the main boom and telescopic booms will be guiding kestamit.
- Folding booms and telescopic booms will be produced from high-strength imported material.(WELDOX-960)

---

**ASELKON CRANE KAMPUS MACHINERY IND. Co. Ltd.**

Address: Fetihmahadanaçevreyolu no:113Karatay KONYA-TURKEY Tel: 0332 346 06 10 FAX:  
0332 342 65 14 www.asekon.com.tr Mail: info@asekon.com.tr



### Security

- Crane Operator Control panel has a 12.1" dust and water proof & anti-reflective (Shine-Out) LCD Screen which is fully double side metal case system.
- **Besides, a weight control system will be equipped that records which boom worked how long and these records can be transferred to computer via USB then duration of maintenance and wear statistics of crane can be calculated.**
- The whole electronic parts of the crane will have IP54 class ambient resistance.
- **Optimization work on sloped ground with nine-axis three angle sensors (main boom, folding boom, on the second folding) and with electronic balance system.**
- Pressures and angles of the boom can be followed on the screen display in real-time.
- The opportunity to watch from the operator panel by dual-axis & night vision, motion tracking camera system. The image processing software helps to operator by virtual lines on screen.
- **GSM-GPS system which can track by satellite day by day and weekly-monthly working reports, (Available Turkey is free, otherwise SIM fee paid by user) And ASELKON maintenance center sends to machine owner weekly & monthly working summary graphs and GPS tracking map summary.**
- Completely wireless second boom pressure & angle transceiver system with built-in battery requires no charge for years.
- **Multimedia video system has How to use the Crane, training, maintenance and promotion videos which has in English, Russian and Arabic subtitles.**
- Moment control system will be settled down to cut overloaded control system will be settled down to cut overloaded hydraulic circuitry (OPTIONAL Safety System). Moreover this moment control system only will permit to withdrawal of extension booms of the operator.
- **In urgent case that the operator cannot see but it requires interventions an emergency stopping button will be placed to cut the hydraulic circuitry.**
- The electronic system software has 4 language options TURKISH-ENGLISH-RUSSIAN-ARABIC.



### Hydraulic System

- Double-acting hydraulic cylinders and honed from high-strength material (at least the quality of WELDOX-700 or equivalent) will be produced.
- Rods precision-machined, hard chrome-plated high-strength material to (at least the quality of Ç-1040 or equivalent) will be produced.
- The hydraulic system; machine, hydraulic system and an overload in order to protect the people working under the machine, waiting for a long time to load the hose burst and pressure relief, load holding (Over center) and twin locking valves shall be used.
- Normal engine speed of the vehicle will provide 250 bar pressure pump continuously.
- The system maximum working pressure will be 250 bar.
- The system will be provided on the suction and return filter cleaning system using the system will be healthy and long life.
- Hydraulic plumbing pipes, seamless steel pipe imported from cold-shooting will be covered with phosphate ST37.
- A record thimbles used for Installation will be imported.
- Hydraulic oil tank capacity of the crane will not interfere with the operation capacity will be selected.
- At all levels, hydraulic installations pressure can be read from manometer bar and kg/cm<sup>2</sup>.

---

**ASELKON CRANE KAMPUS MACHINERY IND. Co. Ltd.**

Address: Fetihmahadanaçevreyolu no:113Karatay KONYA-TURKEY Tel: 0332 346 06 10 FAX:  
0332 342 65 14 www.asekon.com.tr Mail: info@asekon.com.tr



### Used Materials

- Pump Sunfab(ASELKON) or Hydrocar (ASELKON)
- Stell Boom Group WELDOX-960 (ASELKON) or DOMEX 960
- Main body Group WELDOX-700 (ASELKON)
- Crane Control Walvoil (ASELKON)
- Foot Control Walvoil (ASELKON) or Bucher(ASELKON)
- Reducer Dynamic Oil (ASELKON)
- Valves HBS (Steel Case) (ASELKON)
- Rotation Filter Ikron (ASELKON)
- Suction Filter Ikron (ASELKON)
- Pressure Filter Ikron (ASELKON)
- Hoses Manuli (ASELKON)
- Oil cooler Emmegi (ASELKON)
- Installation pipes Benteler (ASELKON) or Böhler(ASELKON)
- Hoses Drum Demac(ASELKON)
- Electronic Control System + Aselkon Maintenance Software
- Hydraulic Cylinders Materials are European, Workmanship is ASELKON
- Ring Gear **IMO** (ASELKON) external thread
- Radio Control Scanreco (ASELKON)

### Price

**400 000 USD**

### Payment

50 % Advance with the Order Confirmation

50% Before delivery of good(s)

### Delivery

25 Days Ex-Factory after receiving the Advance

### Warranty

The warranty period of the Crane will be 24 months or 3750 hours (which comes first) by certificate of the Ministry of Industry and Trade.

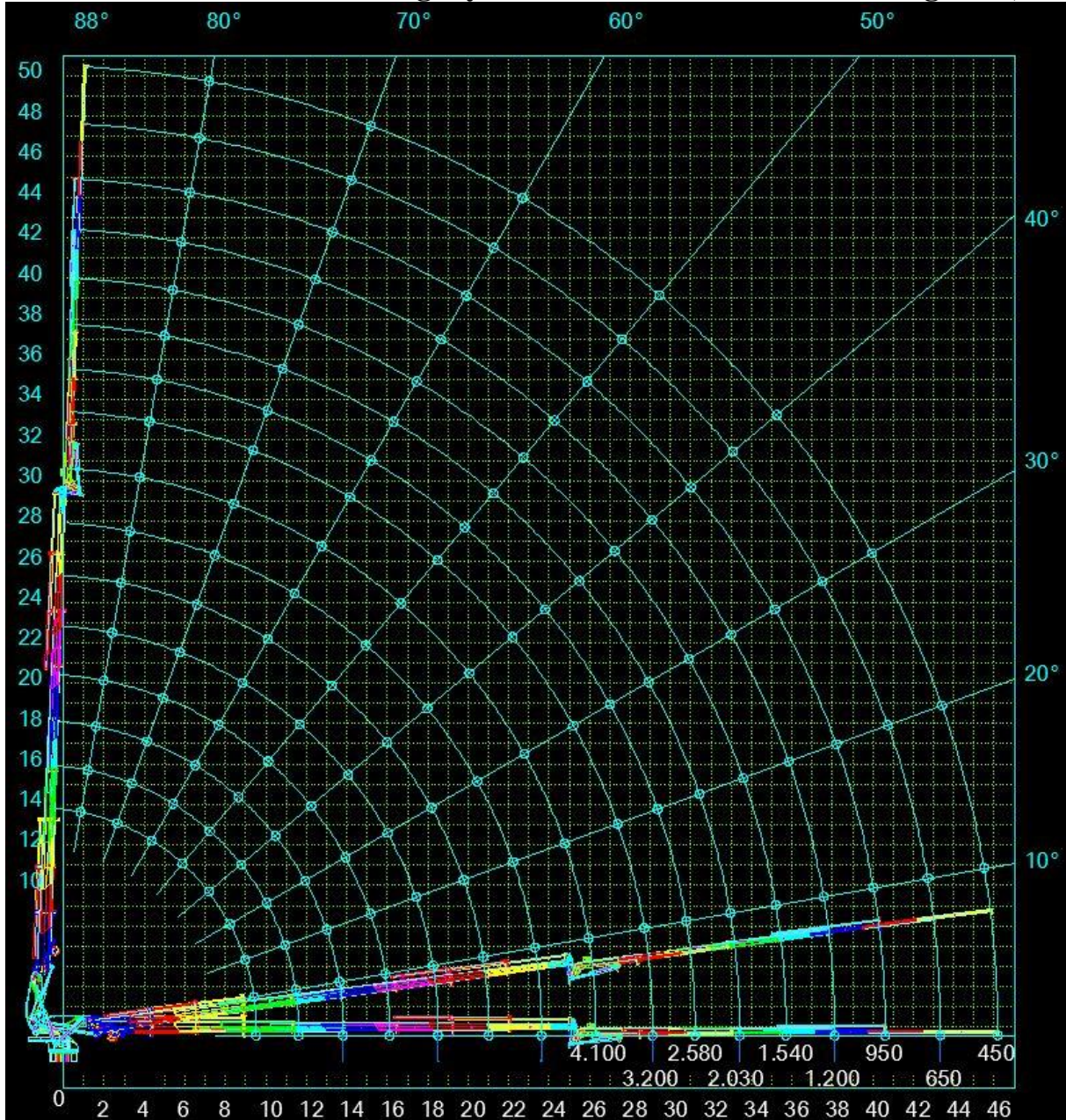
---

**ASELKON CRANE KAMPUS MACHINERY IND. Co. Ltd.**

Address: Fetihmahadanaçevreyolu no:113 Karatay KONYA-TURKEY Tel: 0332 346 06 10 FAX:  
0332 342 65 14 www.aselkon.com.tr Mail: info@aselkon.com.tr

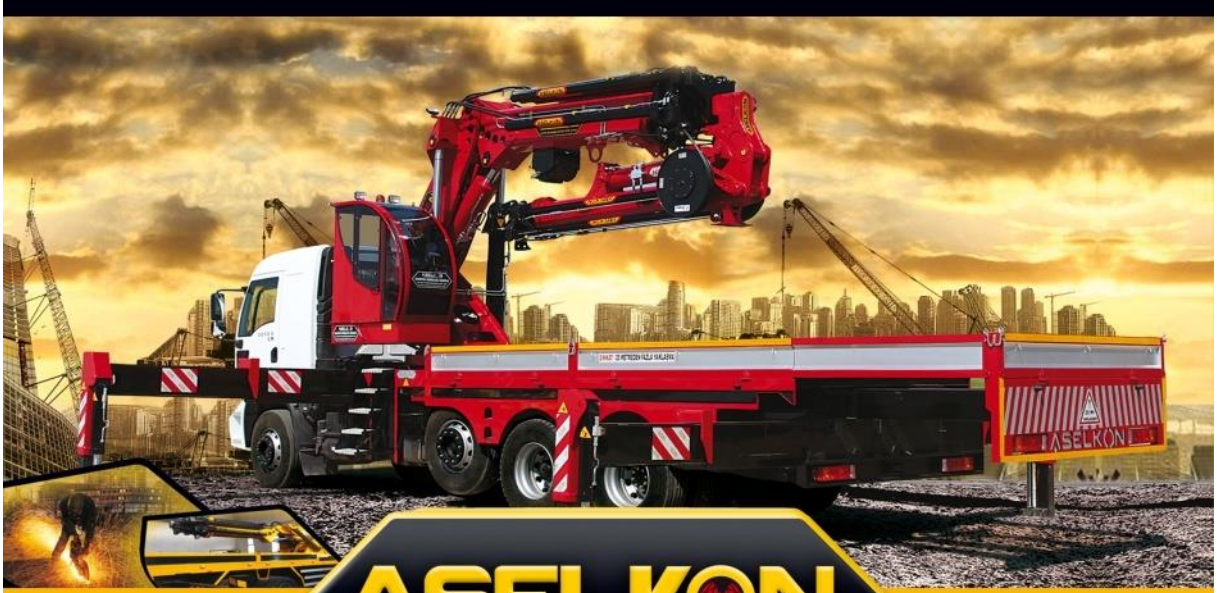


### ASK 300 L8+5 Double Folding Hydraulic Mobile Crane Load Diagrams;



**ASELKON CRANE KAMPUS MACHINERY IND. Co. Ltd.**

Address: Fetihmahadanaçevreyolu no:113Karatay KONYA-TURKEY Tel: 0332 346 06 10 FAX:  
0332 342 65 14 www.aselkon.com.tr Mail: info@aselkon.com.tr



ISO-9001:2008  
www.kampushidrolik.com  
Skype/aselkon42

**ASELKON KAMPÜS HİDROLİK**  
Tel. :+90 332 346 06 10 Viber/Gsm: +90 543 423 33 24  
Fetih Mahallesi Adana Çevre Yolu Cd. No:113  
Karatay/KONYA/TÜRKİYE

**ASELKON CRANE KAMPUS MACHINERY IND. Co. Ltd.**

Address: Fetihmahadanaçevreyolu no:113Karatay KONYA-TURKEY Tel: 0332 346 06 10 FAX:  
0332 342 65 14 www.aselkon.com.tr Mail: info@aselkon.com.tr