

22 TON

Hydraulic All-Terrain Crane



Boom Lengths: 25' to 70'
Jib Lengths: 25' to 43'
Jib Offsets: 2 - 15 - 30 Degrees

Lifting Capacities

Telescopic Boom All Terrain Crane

ATC-822

22-ton (20 metric ton)

3,000 lbs. (1 361 kg) Counterweight

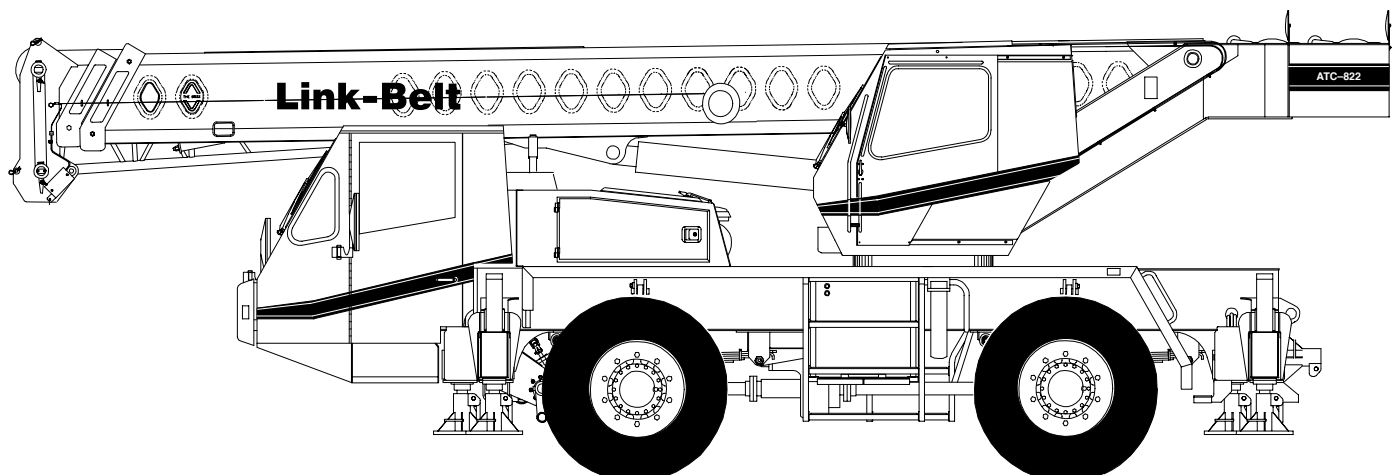
Boom and fly capacities for this machine are listed by the following sections:

Fully Extended Outriggers

- Working Range Diagram
- 27.12' – 70.12' (8.27 – 21.37 m) Main Boom Capacities
- 27' (8.23 m) Offset Fly Capacities
- 27' – 44' (8.23 – 13.41 m) Two-piece Offset Fly Capacities

On-Tires

- Working Range Diagram
- 27.12' – 70.12' (8.27 – 21.37 m) Main Boom Capacities

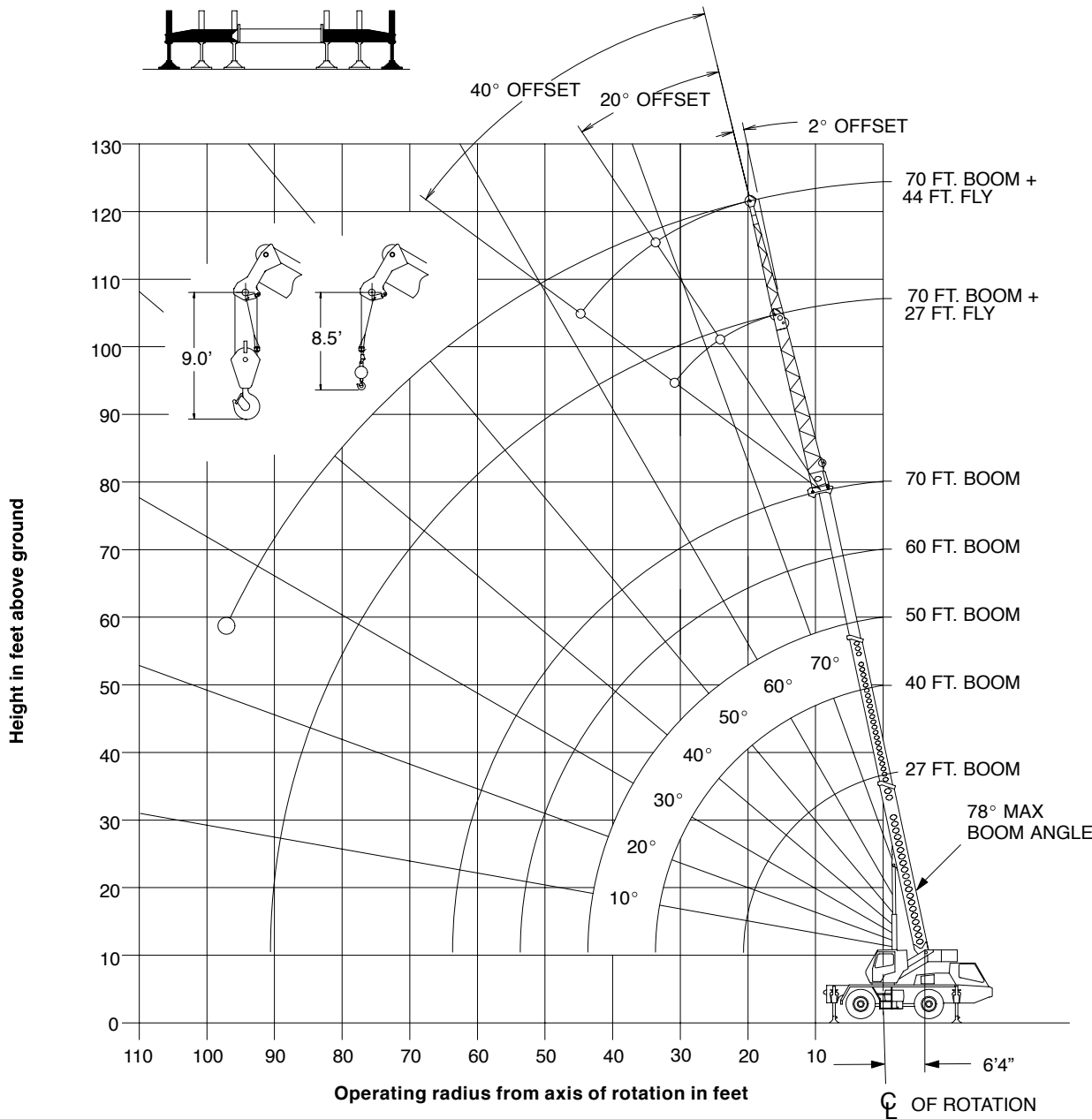


CAUTION: This material is supplied for reference use only. Operator must refer to in-cab Crane Rating Manual to determine allowable machine lifting capacities and operating procedures.



WORKING RANGE DIAGRAM

Working Range Diagram On Fully Extended Outriggers



- Denotes Main Boom + 27 Ft. Fly
- Denotes Main Boom + 44 Ft. Fly

Note: Boom and fly geometry shown are for unloaded condition and crane standing level on firm supporting surface. Boom deflection, subsequent radius, and boom angle change must be accounted for when applying load to hook.

WARNING


Do Not Lower The Boom Below The Minimum Boom Angle For No Load As Shown In The Above Chart For The Boom Lengths Shown. Loss Of Stability Will Occur Causing A Tipping Condition.





Note: Refer To Page 4 For “Capacity Deductions For Auxiliary Load Handling Equipment”. \angle Loaded Boom Angle In Degrees. () Reference Radius For Minimum Boom Angle Capacities (Shown in Parenthesis) Are In Feet.

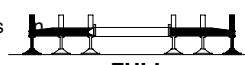
Rated Lifting Capacities In Pounds Fully Extended Outriggers. See Set Up Note 2.



FULL

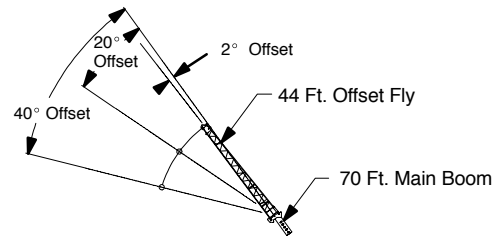
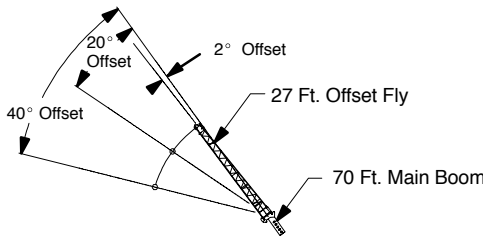
Load Radius (Ft.)	27 Ft.		40 Ft.		50 Ft.	
	\angle °	Load	\angle °	Load	\angle °	Load
9	60.5	44,000	71.5	41,000	75.5	38,800
10	58.0	40,000	69.5	38,800	74.5	36,800
12	52.5	33,500	66.5	33,800	72.0	33,400
15	43.5	26,100	61.5	26,400	68.0	26,600
20	19.5	18,500	52.5	18,700	61.5	18,900
25			42.0	14,600	54.5	14,700
30			28.5	11,300	47.0	11,500
35					37.5	9,500
40					25.5	7,500
Min.Bm. Ang./Cap.	0 (20.8)	17,500	0 (33.7)	9,600	0 (43.7)	4,300

Rated Lifting Capacities In Pounds Fully Extended Outriggers. See Set Up Note 2.

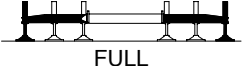


FULL

Load Radius (Ft.)	60 Ft.		70 Ft.	
	\angle °	360°	\angle °	360°
12	76.0	30,500		
15	72.5	26,600	76.0	22,000
20	67.5	19,000	71.5	17,700
25	62.0	14,800	67.0	14,500
30	56.0	11,500	62.0	11,600
35	49.5	9,600	57.5	9,700
40	42.5	7,600	52.0	7,700
45	34.5	6,200	46.0	6,200
50	23.5	5,000	39.5	5,100
55			32.0	4,200
60			22.0	3,500
Min.Bm. Ang./Cap.	0 (53.7)	4,400	0 (63.8)	3,100



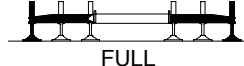
Rated Lifting Capacities In Pounds Fully Extended Outriggers. See Set Up Note 2.



FULL

Load Radius (Ft.)	2° Offset		20° Offset		40° Offset	
	\angle °	Load	\angle °	Load	\angle °	Load
20	77.0	11,300				
25	74.0	11,000				
30	71.0	9,400	75.5	6,800		
35	68.0	8,400	72.5	6,400	77.0	4,900
40	64.5	7,300	69.5	5,900	73.5	4,700
45	61.0	6,300	66.0	5,600	70.0	4,500
50	57.5	5,500	62.5	5,300	66.5	4,400
55	53.5	4,600	58.5	4,900	62.5	4,300
60	49.5	3,800	54.5	4,100	58.5	4,100
65	45.5	3,200	50.0	3,500	53.5	3,700
70	41.0	2,700	45.5	2,900	48.5	3,100
75	35.5	2,300	40.0	2,500	42.5	2,600
80	29.5	1,900	34.0	2,000		
85	22.5	1,600	26.0	1,700		
90	9.5	1,300				
Min.Bm. Ang./Cap.	0	400	0	400	0	500

Rated Lifting Capacities In Pounds Fully Extended Outriggers. See Set Up Note 2.



FULL

Load Radius (Ft.)	2° Offset		20° Offset		40° Offset	
	\angle °	Load	\angle °	Load	\angle °	Load
25	77.0	6,700				
30	74.5	6,100				
35	72.0	5,500				
40	69.5	5,000	76.0	3,600		
45	67.0	4,600	73.5	3,400		
50	64.0	4,200	70.5	3,200	77.0	2,500
55	61.0	3,900	67.5	3,000	73.5	2,400
60	58.0	3,600	64.5	2,800	70.5	2,300
65	55.0	3,300	61.5	2,600	67.5	2,200
70	52.0	2,900	58.5	2,500	64.0	2,100
75	48.5	2,500	55.0	2,400	60.0	2,100
80	44.5	2,100	51.5	2,300	56.0	2,000
85	40.5	1,800	47.0	2,000	51.5	2,000
90	36.0	1,500	42.5	1,700	46.5	1,800
95	31.0	1,200	37.5	1,400	40.0	1,500
100			31.0	1,100		

WARNING

Do Not Lower 44 Ft. Offset Fly In Working Position Below 25° Main Boom Angle Unless Main Boom Length Is 66 Ft. Or Less, Since Loss Of Stability Will Occur Causing A Tipping Condition.

